

ILLUSTRATED PARTS LIST



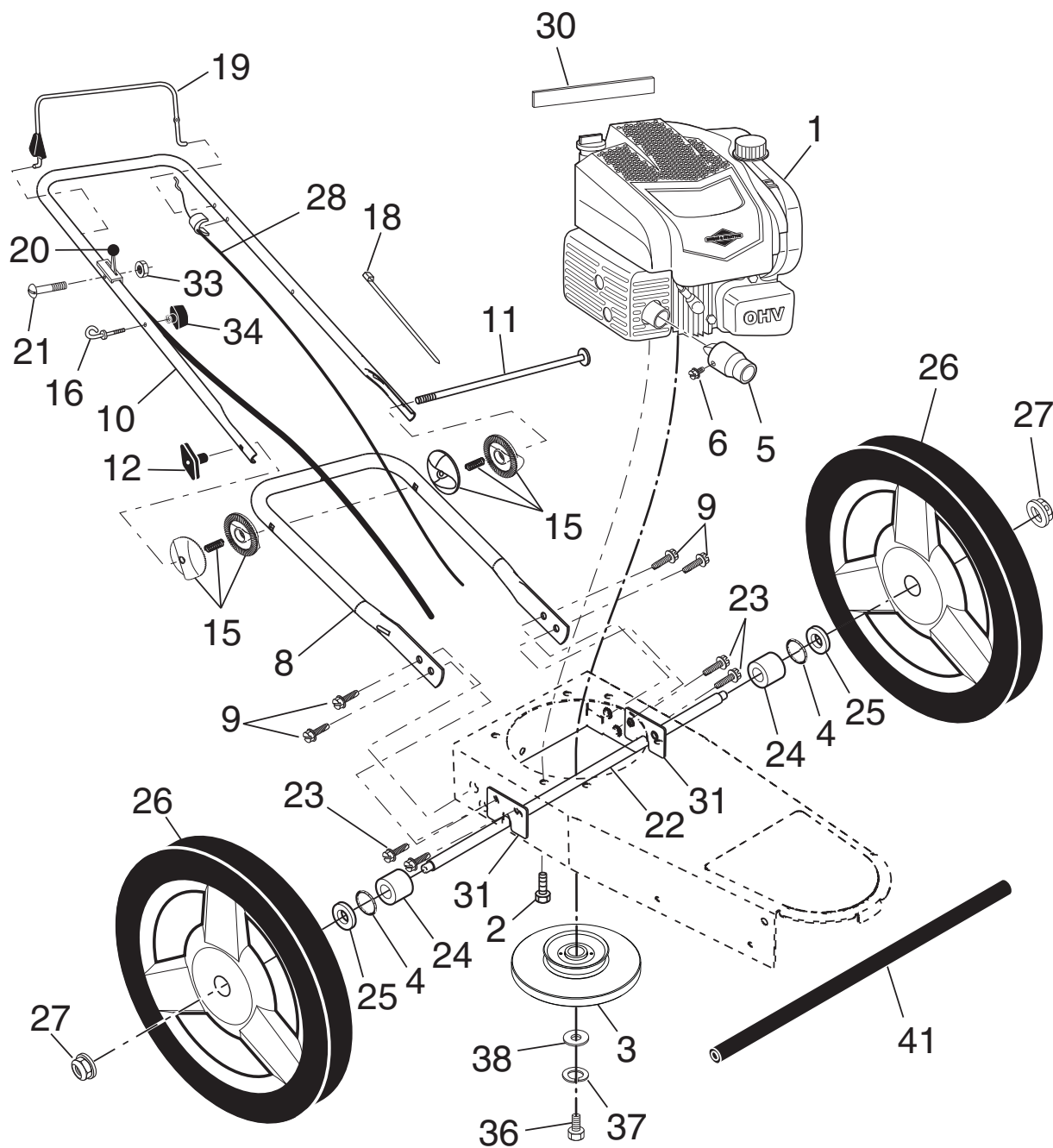
WHEELED WEED TRIMMER

MODEL NUMBER HU675HWT

MFG. ID. NUMBER 96175000202

HUSQVARNA WHEELED WEEDTRIMMER

MODEL NUMBER HU675HWT (MFG. ID. NO. 96175000202)



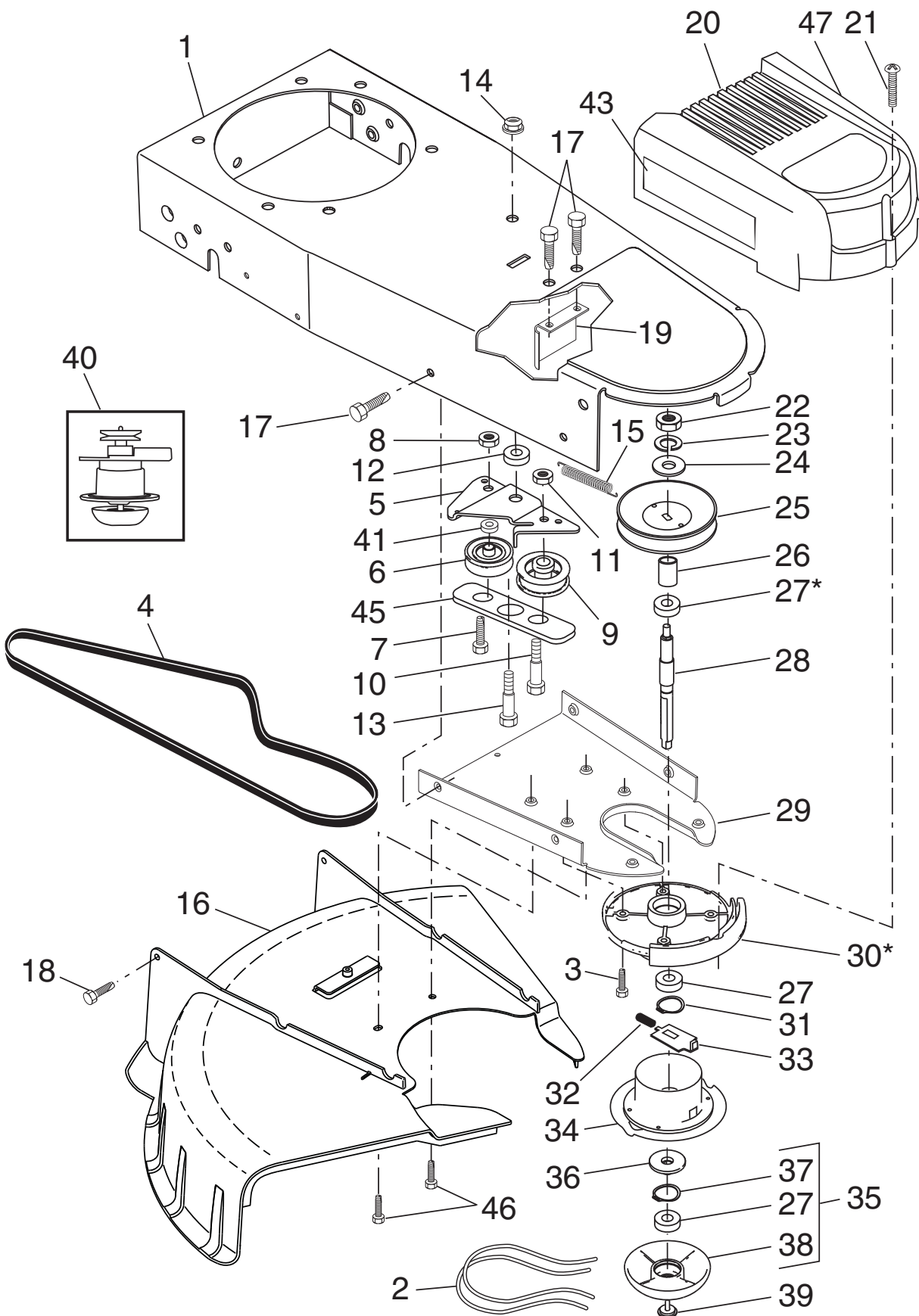
HUSQVARNA WHEELED WEEDTRIMMER

MODEL NUMBER HU675HWT (MFG. ID. NO. 96175000202)

KEY NO.	PART NO.	DESCRIPTION
1	- - -	Engine, Briggs & Stratton, Model Number 103M02-0008-F1 (For engine service and replacement parts, call Briggs & Stratton at 1-800-233-3723)
2	532 15 04-06	Bolt, Engine Mounting 3/8-16
3	588 45 27-02	Pulley / Flywheel, Engine
4	532 19 74-80	O-Ring
5	501 85 75-01	Spark Arrester
6	582 12 22-01	Screw
8	532 44 68-38	Handle, Lower
9	532 42 88-67	Screw, Hex Washer Head 5/16-18 x 3/4
10	532 44 68-37	Handle, Upper
11	532 17 09-80	Bolt, Handle
12	532 19 19-38	Knob, Handle
15	532 17 97-51	Handle Adjuster Assembly
16	581 90 21-01	Guide, Rope
18	532 06 64-26	Wire Tire
19	587 56 41-02	Control Bar Assembly (Includes Trimmer Head Control Lever, Pin and Spring)
20	588 59 92-01	Engine Brake Control
21	532 19 96-87	Screw 1/4-20
22	532 44 78-29	Axle Shaft Assembly
23	532 42 88-67	Screw, Hex Washer Head 5/16-18 x 3/4
24	532 16 98-23	Washer, Axle
25	532 08 83-48	Washer, Flat 1/2
26	585 91 10-01	Wheel & Tire Assembly 12 x 1-3/4
27	532 40 91-49	Locknut, Hex 3/8-16
28	584 95 41-01	Drive Control Cable
30	501 92 86-01	Decal, Warning
31	532 42 62-97	Bracket, Axle
33	532 19 17-30	Nut, Hex
34	581 91 26-01	T-Knob
36	532 85 10-84	Bolt, Hex Head
37	532 85 02-63	Washer, Lock
38	532 85 10-74	Washer, Flat, Hardened
41	532 44 83-36	Tube, Axle
- -	115 04 57-27	Manual, Operator's, English
- -	115 04 57-31	Manual, Operator's, French
- -	115 04 57-46	Manual, Operator's, Spanish

HUSQVARNA WHEELED WEEDTRIMMER

MODEL NUMBER HU675HWT (MFG. ID. NO. 96175000202)



HUSQVARNA WHEELED WEEDTRIMMER

MODEL NUMBER HU675HWT (MFG. ID. NO. 96175000202)

KEY NO.	PART NO.	DESCRIPTION
1	581 70 83-84	Chassis Assembly
2	532 18 22-19	Line, Trimmer .155 diameter x 18.75 long
3	532 17 37-15	Screw, Self-Tapping 5/16-18 x 1
4	532 18 54-76	V-Belt
5	586 90 91-02	Bracket, Idler
6	532 16 60-42	Pulley, Idler, V-Groove
7	532 17 37-16	Bolt, Hex Head 3/8-16 x 1.25
8	873 93 06-00	Locknut, Hex 3/8-16
9	532 16 60-43	Pulley, Idler, Flat
10	532 16 08-29	Bolt, Shoulder
11	873 93 05-00	Locknut, Hex 5/16-18
12	532 17 37-17	Spacer
13	532 17 47-19	Bolt, Shoulder
14	532 40 91-49	Locknut, Flange
15	532 17 38-11	Spring, Return
16	584 95 32-01	Deflector, Bottom
17	817 06 04-10	Screw 1/4-20 x 5/8
18	532 17 88-48	Screw, Hex Washer Head #10-16 x 5/8
19	586 91 66-02	Belt Keeper
20	532 44 66-65	Cover, Chassis, Top
21	532 14 97-46	Screw #10-24 x 1-3/4
22	873 61 06-00	Nut, Hex 3/8-24 UNF
23	532 85 02-63	Washer, Lock 3/8
24	819 12 12-14	Washer, Flat 3/8
25	532 18 03-40	Pulley, Driven
26	532 17 25-51	Spacer, Pulley
27	532 17 45-49	Bearing
28	532 17 25-20	Jackshaft
29	532 18 67-52	Cover, Chassis, Bottom
30	532 17 45-43	Spindle Housing Assembly (* Includes Upper Bearing, Key No. 27)
31	532 17 45-81	Ring, Retaining, External, 17mm
32	532 17 39-73	Spring, Locking Plate
33	532 17 25-19	Locking Plate
34	532 18 03-38	Carrier Plate Assembly
35	532 18 22-17	Mow Ball Assembly (Includes Key Numbers 27, 37 and 38)
36	532 17 25-16	Cover, Bearing
37	532 17 45-80	Ring, Retaining, Internal, 40mm
38	532 17 25-23	Mow Ball
39	532 18 03-34	Bolt, Mow Ball
40	532 18 03-33	Spindle Assembly, Complete (Includes Key No. 22-28 and 30-39)
41	532 17 40-29	Spacer
43	532 44 65-67	Decal, Instruction, RH
45	532 18 67-53	Belt Keeper, Bottom
46	817 06 04-08	Screw, Self-Tapping
47	532 44 65-68	Decal, Instruction, LH