

M 145

Spare parts

Ersatzteile

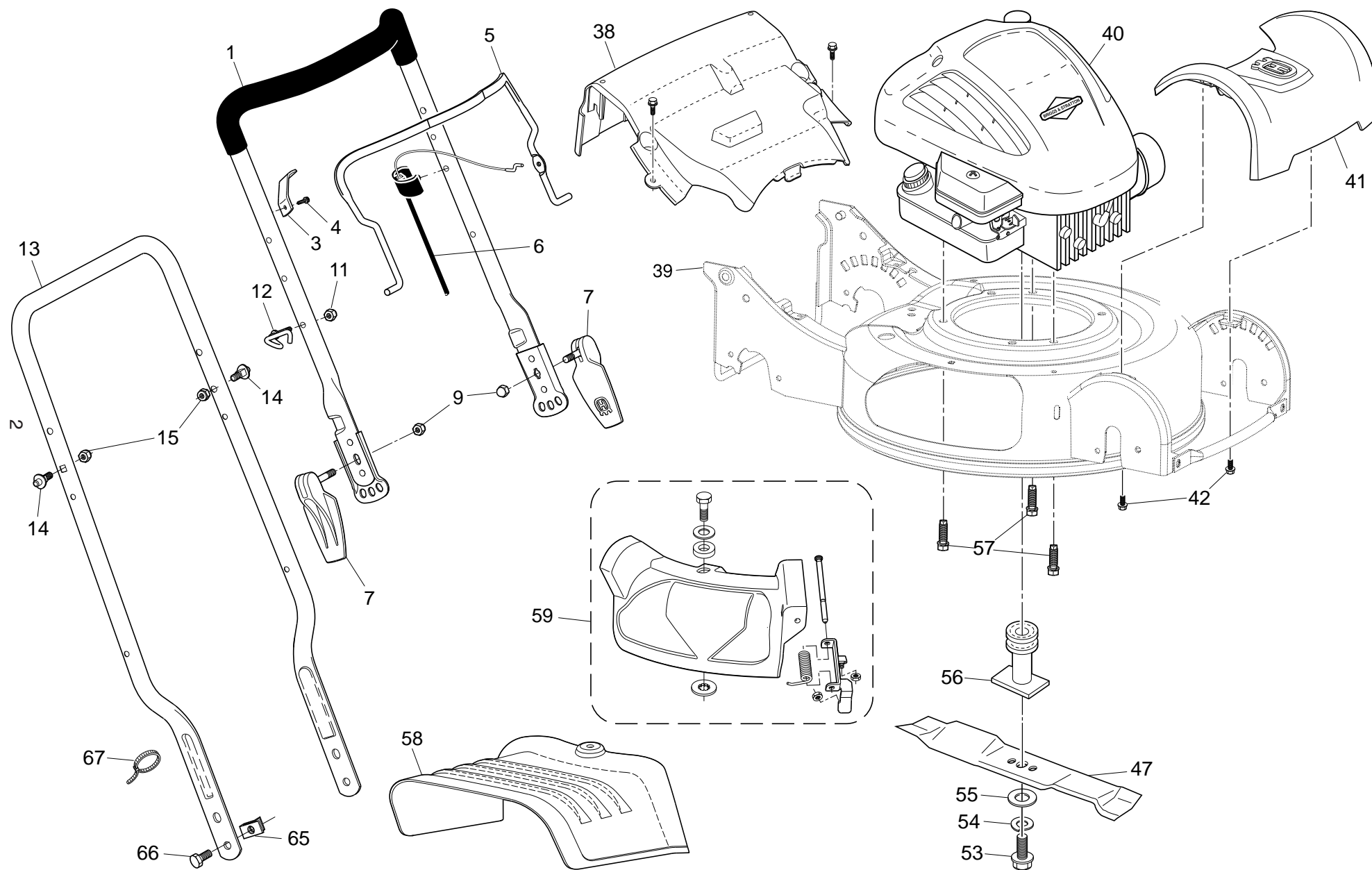
Pièces détachées

Reserve onderdelen

Repuestos

Reservdelar

ROTARY LAWN MOWER - - MODEL NUMBER **M 145** (96131002703) PRODUCT NUMBER 961 31 00-27



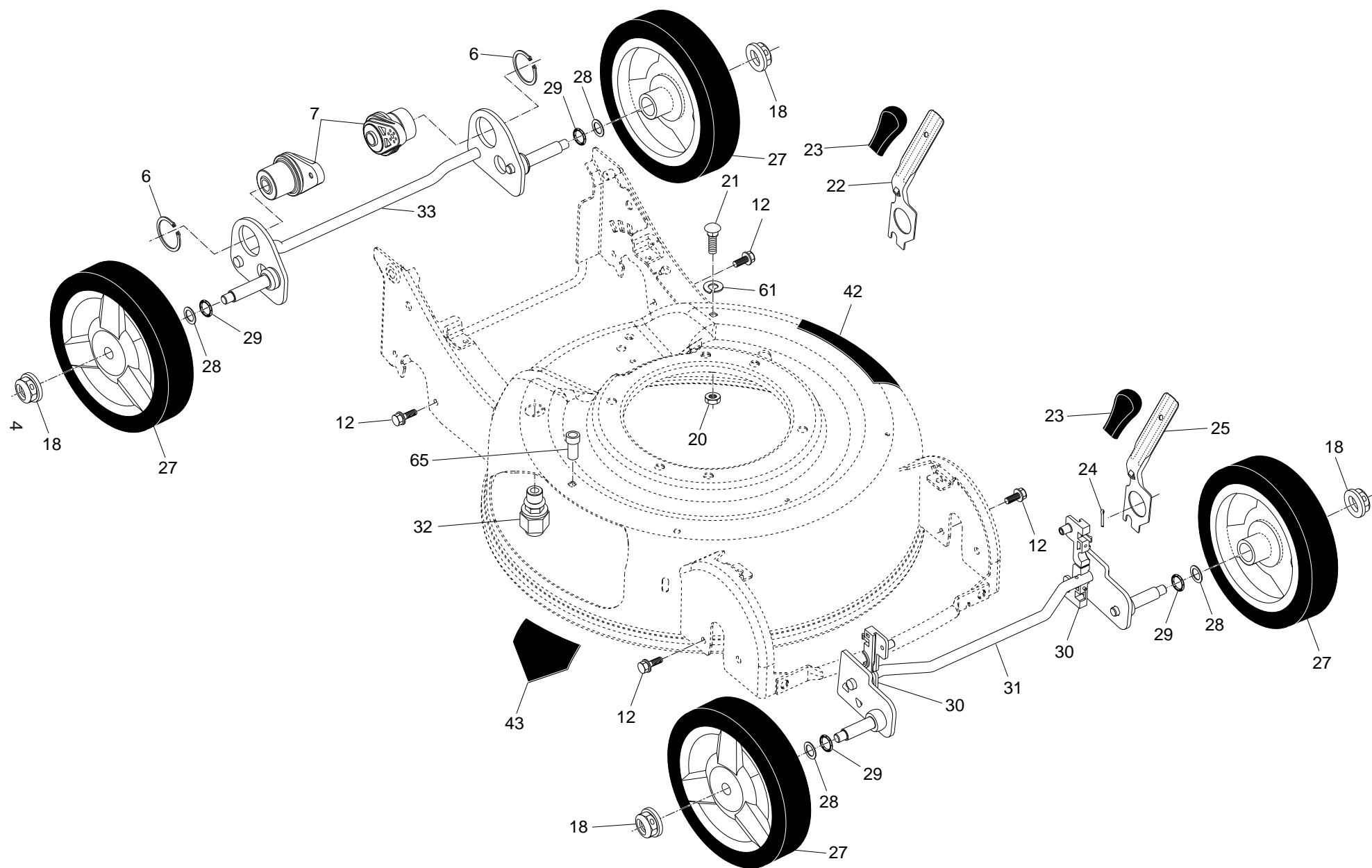
ROTARY LAWN MOWER - - MODEL NUMBER M 145 (96131002703) PRODUCT NUMBER 961 31 00-27

KEY NO.	PART NO.	DESCRIPTION
1	532 40 06-04	Upper Handle (Includes Foam Grip)
3	532 43 00-34	Upstop Bracket
4	532 75 06-34	Screw, Threaded, Rolled #10-24 x 1/2
5	532 42 68-12	Control Bar
6	532 40 80-47	Cable, Engine Zone Control
7	532 43 06-79	Quick Release Assembly
9	532 40 04-13	Nut, Acorn
11	532 13 20-04	Nut, Hex, Zinc-Plated, Black 1/4-20
12	532 19 47-88	Rope Guide, Upper Handle
13	532 41 35-35	Lower Handle
14	532 19 92-55	Stud, Adjustment
15	532 75 11-53	Nut, Hex 5/16-18
38	532 43 26-80	Drive Cover Assembly (Includes Mounting Screws and Pushnuts)
39	532 43 34-05	Lawn Mower Housing
40	- - -	Engine, Briggs & Stratton, Model Number 10T802-1228-EA (Order parts from Engine manufacturer)

KEY NO.	PART NO.	DESCRIPTION
41	532 41 35-81	Front Cover
42	532 19 41-89	Screw, Hex Washer Head 1/8-16 x 5/8
47	532 19 92-22	Blade / Disc Assembly
53	532 19 17-60	Bolt, Hex Head 3/8-24 x 2-1/2
54	532 85 02-63	Washer, Helical
55	532 85 10-74	Washer, Hardened
56	532 40 71-38	Blade Adapter / Pulley
57	532 15 04-06	Bolt, Engine, Dogpoint 3/8-16
58	532 43 34-19	Discharge Guard
59	532 43 34-06	Mulcher Door Assembly
65	532 40 40-08	Speed Nut
66	532 85 09-99	Bolt, Hex Head 3/8-16 x 1-1/4
67	532 06 64-26	Wire Tie
- -	532 43 46-44	Manual, Operator's, European
- -	532 43 46-45	Manual, Operator's, Scandinavian
- -	532 43 46-46	Manual, Operator's, East Bloc
- -	532 43 46-47	Manual, Operator's, Baltic

NOTE: All component dimensions given in U.S. inches. 1 inch = 25.4 mm. **IMPORTANT:** Use only Original Equipment Manufacturer (O.E.M.) replacement parts. Failure to do so could be hazardous, damage your lawn mower and void your warranty.

ROTARY LAWN MOWER - - MODEL NUMBER M 145 (96131002703) PRODUCT NUMBER 961 31 00-27



ROTARY LAWN MOWER - - MODEL NUMBER **M 145** (96131002703) PRODUCT NUMBER 961 31 00-27

KEY NO.	PART NO.	DESCRIPTION
6	812 00 00-12	Ring, Retaining
7	532 19 92-45	Bearing, Drive
12	532 16 34-09	Screw, Hi-Lo Thread 1/8 x 5/8
18	532 40 91-48	Nut, Hex
20	532 40 01-00	Locknut 1/4-20
21	872 11 04-07	Bolt, Carriage
22	532 41 35-19	Height Adjustment Lever, Rear
23	532 16 76-53	Knob, Height Adjustment Lever
24	532 16 96-75	Retainer Spring
25	532 41 35-82	Height Adjustment Lever, Front
27	532 41 08-31	Wheel & Tire Assembly
28	532 08 83-48	Washer, Flat
29	532 19 74-80	O-Ring
30	532 41 35-20	Bearing Assembly, Front Axle
31	532 41 35-80	Axle Assembly, Front
32	532 40 00-94	Fitting, Quick Release
33	532 41 37-27	Axle Assembly, Rear
42	532 19 99-12	Decal, Warning
43	532 18 21-66	Decal, Danger
61	532 85 02-63	Lock Washer 3/8 Helical Spring
65	532 43 22-34	Bushing

NOTE: All component dimensions given in U.S. inches. 1 inch = 25.4 mm. **IMPORTANT:** Use only Original Equipment Manufacturer (O.E.M.) replacement parts. Failure to do so could be hazardous, damage your lawn mower and void your warranty.