

R152 SVSW

Spare parts

Ersatzteile

Pièces détachées

Reserve onderdelen

Repuestos

Reservdelar

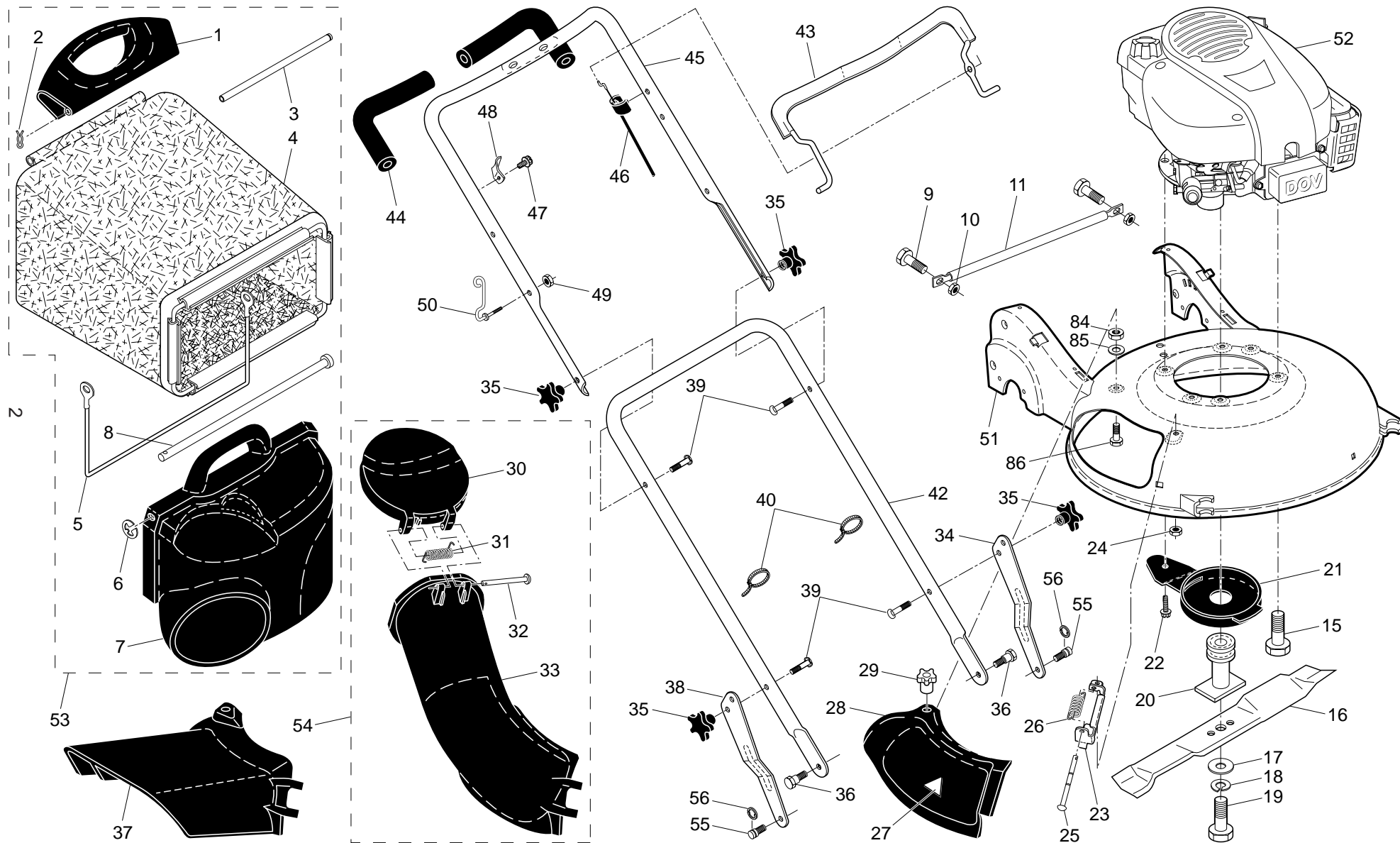
ILLUSTRATED PARTS LIST

MODEL NUMBER R 152SVSW

PRODUCT NUMBER 961 41 00-64

MFG. ID. NUMBER 96141006405

ROTARY LAWN MOWER - - MODEL NUMBER R 152SVSW (96141006405) PRODUCT NUMBER 961 41 00-64

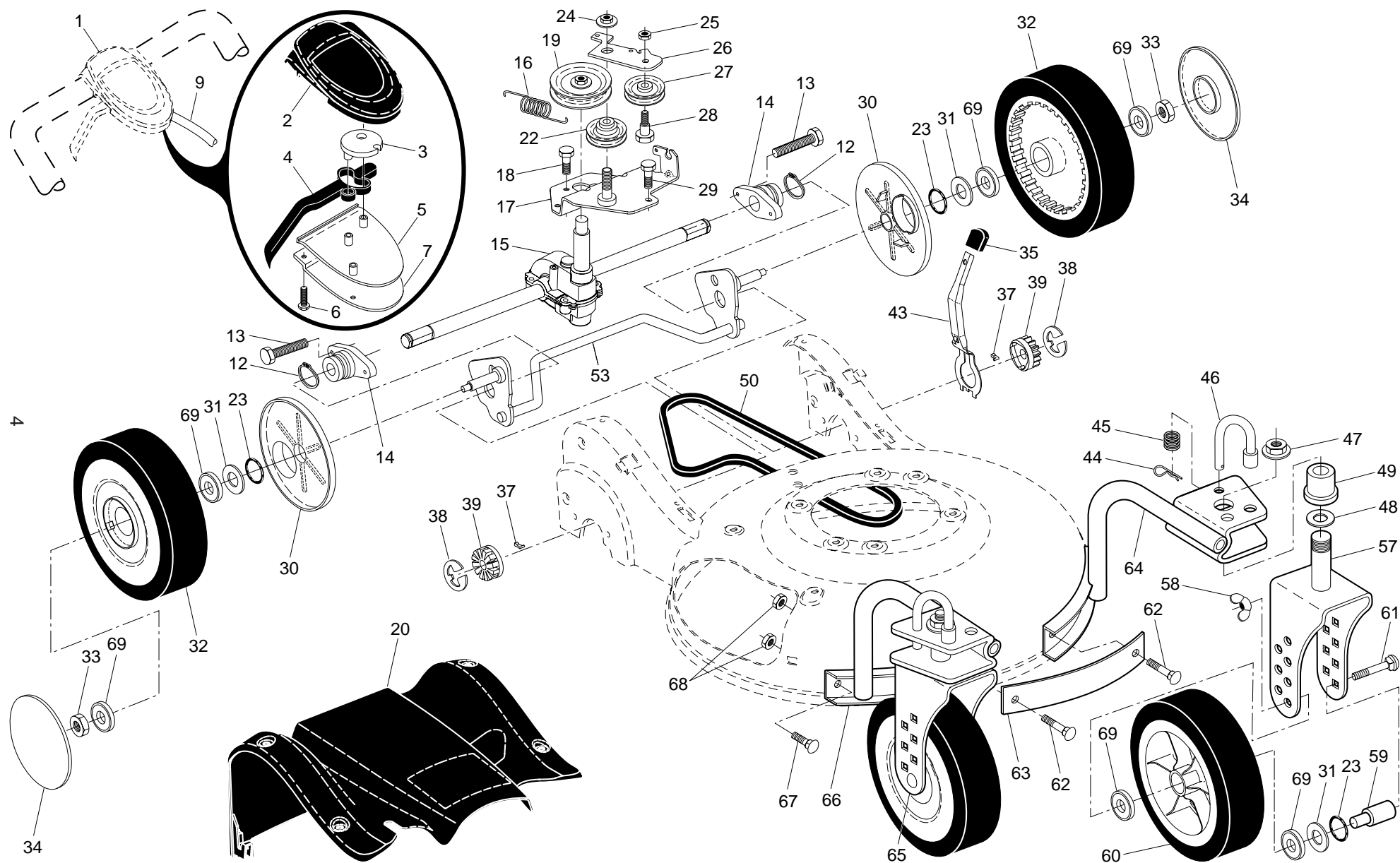


ROTARY LAWN MOWER - - MODEL NUMBER R 152SVSW (96141006405) PRODUCT NUMBER 961 41 00-64

| KEY NO. | PART NO. | DESCRIPTION | KEY NO. | PART NO. | DESCRIPTION |
|---------|--------------|--------------------------------|---------|--------------|---|
| 1 | 532 19 05-82 | Handle, Grassbag, Rear | 34 | 532 19 06-19 | Adjustment Bracket, Lower Handle, LH |
| 2 | 532 06 53-22 | Hairpin Cotter | 35 | 532 18 23-98 | Knob, Star |
| 3 | 532 18 34-83 | Rod, Rear Handle, Grassbag | 36 | 532 19 41-87 | Bolt, Shoulder |
| 4 | 532 40 18-98 | Grassbag | 37 | 532 18 59-96 | Deflector, Discharge |
| 5 | 532 18 85-06 | Frame, Grassbag | 38 | 532 19 06-21 | Adjustment Bracket, Lower Handle, RH |
| 6 | 812 00 00-14 | E-Ring | 39 | 532 19 15-74 | Bolt, Handle |
| 7 | 532 19 05-81 | Door, Grassbag | 40 | 532 06 64-26 | Wire Tie |
| 8 | 532 18 34-79 | Rod, Pivot | 42 | 532 18 70-96 | Handle Assembly, Lower |
| 9 | 872 14 04-05 | Bolt, Carriage 1/4-20 | 43 | 532 42 68-12 | Bail, Control |
| 10 | 873 80 04-00 | Nut, Hex, Nylock 1/4-20 | 44 | 532 18 27-48 | Grip, Foam |
| 11 | 532 19 06-92 | Foot Guard | 45 | 532 18 62-96 | Handle Assembly, Upper (Includes Foam Grip) |
| 15 | 532 15 04-06 | Bolt, Engine Mounting | 46 | 532 40 88-85 | Cable, Engine Zone Control |
| 16 | 532 41 50-76 | Blade, 21" | 47 | 532 75 06-34 | Screw |
| 17 | 532 85 10-74 | Washer, Hardened | 48 | 532 43 00-34 | Bracket, Upstop |
| 18 | 532 85 02-63 | Washer, Lock | 49 | 532 13 20-04 | Nut, Hex |
| 19 | 532 19 17-60 | Bolt, Hex Head, Grade 8 | 50 | 532 18 85-01 | Rope Guide |
| 20 | 532 18 67-66 | Adapter, Blade | 51 | 532 42 46-78 | Kit, Housing |
| 21 | 532 19 05-16 | Debris Shield | 52 | - - - | Engine, Briggs & Stratton, Model Number 100602-2980-EA (Order parts from Engine Manufacturer) |
| 22 | 817 60 04-06 | Screw, Hex Head, Serrated | 53 | 532 40 18-96 | Grassbag Assembly, Complete |
| 23 | 532 18 36-09 | Mounting Bracket, Mulcher Door | 54 | 532 18 90-14 | Discharge Chute Assembly, Complete |
| 24 | 532 19 17-30 | Nut, Hex | 55 | 532 19 41-92 | Stud, Shoulder T45 |
| 25 | 532 18 34-45 | Rod, Hinge | 56 | 812 00 00-58 | E-Ring |
| 26 | 532 18 34-46 | Spring, Mulcher Door | 84 | 532 40 01-00 | Locknut, Hex |
| 27 | 532 18 21-66 | Decal, Danger | 85 | 532 85 02-63 | Washer, Lock 3/8 |
| 28 | 532 19 05-15 | Mulcher Door | 86 | 872 11 04-07 | Bolt, Carriage 1/4-20 x 7/8 |
| 29 | 532 18 34-47 | Knob | - - | 532 18 21-34 | Decal, Warning (not shown) |
| 30 | 532 19 05-80 | Door, Discharge Chute | - - | 532 41 79-39 | Operator's Manual, European |
| 31 | 532 18 34-78 | Spring, Door, Discharge Chute | - - | 532 41 79-40 | Operator's Manual, Scandinavian |
| 32 | 532 18 34-45 | Rod, Door, Discharge Chute | - - | 532 41 79-41 | Operator's Manual, East Bloc |
| 33 | 532 19 05-78 | Discharge Chute, Plastic | - - | 532 41 79-42 | Operator's Manual, Baltic |

NOTE: All component dimensions given in U.S. inches. 1 inch = 25.4 mm. **IMPORTANT:** Use only Original Equipment Manufacturer (O.E.M.) replacement parts. Failure to do so could be hazardous, damage your lawn mower and void your warranty.

ROTARY LAWN MOWER - - MODEL NUMBER R 152SVSW (96141006405) PRODUCT NUMBER 961 41 00-64



ROTARY LAWN MOWER - - MODEL NUMBER R 152SVSW (96141006405) PRODUCT NUMBER 961 41 00-64

| KEY NO. | PART NO. | DESCRIPTION |
|---------|--------------|---|
| 1 | 532 42 56-65 | Drive Control Assembly, Complete |
| 2 | 532 41 16-73 | Cover, Drive Control, Top |
| 3 | 532 18 73-53 | Pulley, Drive Control |
| 4 | 532 42 56-62 | Lever, Drive Control |
| 5 | 532 41 16-64 | Cover, Drive Control, Bottom |
| 6 | 532 18 16-98 | Screw, Torx Head #8-5/8 |
| 7 | 532 40 07-23 | Bracket, Mounting, Drive Control |
| 9 | 532 19 70-11 | Cable, Drive Control |
| 12 | 812 00 00-12 | Ring, Retaining |
| 13 | 532 08 86-52 | Screw |
| 14 | 532 40 80-27 | Bearing / Axle Support |
| 15 | 532 41 92-11 | Gear Case Assembly, Complete |
| 16 | 532 40 65-58 | Spring, Return |
| 17 | 532 40 80-05 | Belt Keeper |
| 18 | 532 16 34-09 | Screw |
| 19 | 532 19 40-18 | Pulley, Drive |
| 20 | 532 41 69-63 | Drive Cover Assembly (Includes Mounting Screws and Retainers) |
| 22 | 532 19 37-91 | Pulley Assembly, V-Groove |
| 23 | 532 18 81-52 | O-Ring |
| 24 | 532 40 91-49 | Nut, Hex, Flangelock |
| 25 | 873 93 05-00 | Nut, Hex, Lock |
| 26 | 532 41 67-36 | Idler Arm |
| 27 | 532 16 60-43 | Pulley, Idler |
| 28 | 532 16 08-29 | Bolt, Hex Head, Shoulder |
| 29 | 817 06 04-10 | Screw 1/4-20 x 1/16 |
| 30 | 532 18 34-57 | Cover, Dust, Wheel |
| 31 | 532 08 83-48 | Washer, Flat 3/8 |
| 32 | 532 19 26-22 | Wheel Assembly, Rear 9 x 2-1/4 |

| KEY NO. | PART NO. | DESCRIPTION |
|---------|--------------|-------------------------------------|
| 33 | 532 40 91-48 | Nut, Hex |
| 34 | 532 18 34-42 | Hubcap |
| 35 | 532 42 52-42 | Knob, Star |
| 37 | 532 40 48-45 | Pawl |
| 38 | 812 00 00-58 | E-Ring |
| 39 | 532 40 38-49 | Pinion |
| 43 | 532 19 05-20 | Lever, Selector, Wheel Height, Rear |
| 44 | 532 16 96-75 | Clip, Retainer |
| 45 | 532 18 50-51 | Spring |
| 46 | 532 18 50-54 | Rod, Lock |
| 47 | 532 40 91-49 | Nut, Hex, Flangelock |
| 48 | 532 18 89-06 | Washer, Flat 1/2 |
| 49 | 532 19 59-96 | Bushing |
| 50 | 532 40 80-31 | Belt, Drive |
| 53 | 532 41 67-40 | Rear Axle Assembly |
| 55 | 532 42 42-45 | Decal, Drive Control |
| 57 | 532 41 70-63 | Bracket, Caster Wheel, LH |
| 58 | 532 18 72-48 | Wing Nut 5/16-18 |
| 59 | 532 18 51-11 | Spacer |
| 60 | 532 19 22-34 | Wheel Assembly, Front 9 x 2-1/4 |
| 61 | 872 27 05-28 | Bolt, Carriage 5/16-18 x 3-1/2 |
| 62 | 532 18 74-74 | Bolt, Carriage 5/16-18 x 7/8 |
| 63 | 532 18 84-75 | Strap, Front |
| 64 | 532 41 40-70 | Support Tube Assembly, LH |
| 65 | 532 41 70-64 | Bracket, Caster Wheel, RH |
| 66 | 532 41 40-69 | Support Tube Assembly, RH |
| 67 | 532 18 75-55 | Bolt, Carriage 5/16-18 x 5/8 |
| 68 | 532 18 72-63 | Nut, Hex 5/16 |
| 69 | 532 75 10-68 | Bearing, Ball (Wheel) |

NOTE: All component dimensions given in U.S. inches. 1 inch = 25.4 mm. **IMPORTANT:** Use only Original Equipment Manufacturer (O.E.M.) replacement parts. Failure to do so could be hazardous, damage your lawn mower and void your warranty.