

M145

Spare parts

Ersatzteile

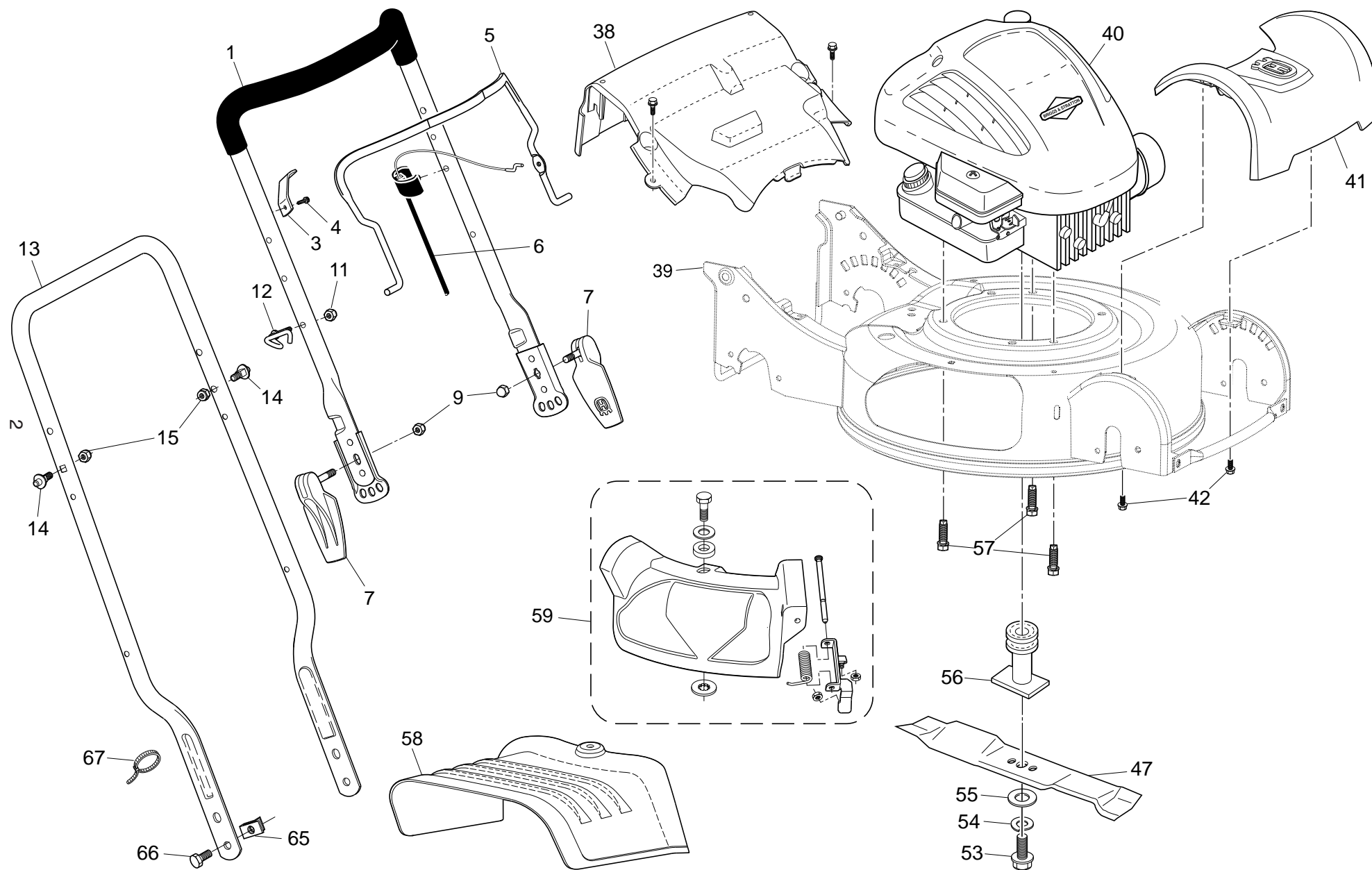
Pièces détachées

Reserve onderdelen

Repuestos

Reservdelar

ROTARY LAWN MOWER - - MODEL NUMBER **M 145** (96131002702) PRODUCT NUMBER 961 31 00-27



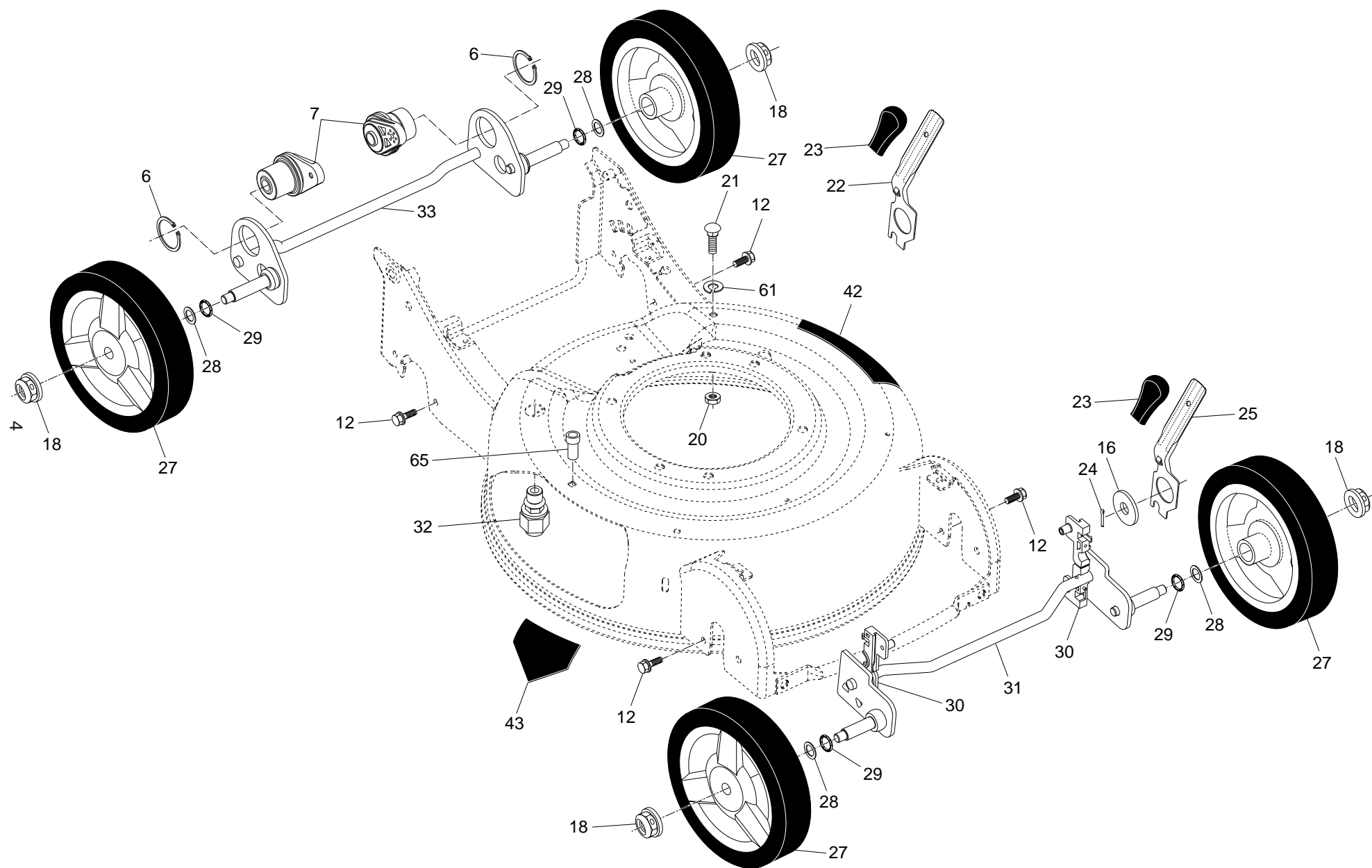
ROTARY LAWN MOWER - - MODEL NUMBER **M 145** (96131002702) PRODUCT NUMBER 961 31 00-27

| KEY NO. | PART NO. | DESCRIPTION |
|---------|---------------------|---|
| 1 | 532 40 06-04 | Upper Handle (Includes Foam Grip) |
| 3 | 532 43 00-34 | Upstop Bracket |
| 4 | 532 75 06-34 | Screw, Threaded, Rolled #10-24 x 1/2 |
| 5 | 532 42 68-12 | Control Bar |
| 6 | 532 40 80-47 | Cable, Engine Zone Control |
| 7 | 532 43 06-79 | Quick Release Assembly |
| 9 | 532 40 04-13 | Nut, Acorn |
| 11 | 532 13 20-04 | Nut, Hex, Zinc-Plated, Black 1/4-20 |
| 12 | 532 19 47-88 | Rope Guide, Upper Handle |
| 13 | 532 41 35-35 | Lower Handle |
| 14 | 532 19 92-55 | Stud, Adjustment |
| 15 | 532 75 11-53 | Nut, Hex 5/16-18 |
| 38 | 532 43 26-80 | Drive Cover Assembly (Includes Mounting Screws and Pushnuts) |
| 39 | 532 43 34-05 | Lawn Mower Housing |
| 40 | - - - | Engine, Briggs & Stratton, Model Number 10T802-1228-EA (Order parts from Engine manufacturer) |

| KEY NO. | PART NO. | DESCRIPTION |
|---------|--------------|-------------------------------------|
| 41 | 532 41 35-81 | Front Cover |
| 42 | 532 19 41-89 | Screw, Hex Washer Head 1/8-16 x 5/8 |
| 47 | 532 19 92-22 | Blade / Disc Assembly |
| 53 | 532 19 17-60 | Bolt, Hex Head 3/8-24 x 2-1/2 |
| 54 | 532 85 02-63 | Washer, Helical |
| 55 | 532 85 10-74 | Washer, Hardened |
| 56 | 532 40 71-38 | Blade Adapter / Pulley |
| 57 | 532 15 04-06 | Bolt, Engine, Dogpoint 3/8-16 |
| 58 | 532 43 34-19 | Discharge Guard |
| 59 | 532 43 34-06 | Mulcher Door Assembly |
| 65 | 532 40 40-08 | Speed Nut |
| 66 | 532 85 09-99 | Bolt, Hex Head 3/8-16 x 1-1/4 |
| 67 | 532 06 64-26 | Wire Tie |
| - - | 532 43 46-44 | Manual, Operator's, European |
| - - | 532 43 46-45 | Manual, Operator's, Scandinavian |
| - - | 532 43 46-46 | Manual, Operator's, East Bloc |
| - - | 532 43 46-47 | Manual, Operator's, Baltic |

NOTE: All component dimensions given in U.S. inches. 1 inch = 25.4 mm. **IMPORTANT:** Use only Original Equipment Manufacturer (O.E.M.) replacement parts. Failure to do so could be hazardous, damage your lawn mower and void your warranty.

ROTARY LAWN MOWER - - MODEL NUMBER M 145 (96131002702) PRODUCT NUMBER 961 31 00-27



ROTARY LAWN MOWER - - MODEL NUMBER **M 145** (96131002702) PRODUCT NUMBER 961 31 00-27

| KEY NO. | PART NO. | DESCRIPTION |
|------------|--------------|--------------------------------|
| 6 | 812 00 00-12 | Ring, Retaining |
| 7 | 532 19 92-45 | Bearing, Drive |
| 12 | 532 16 34-09 | Screw, Hi-Lo Thread 1/8 x 5/8 |
| 18 | 532 40 91-48 | Nut, Hex |
| 20 | 532 40 01-00 | Locknut 1/4-20 |
| 21 | 872 11 04-07 | Bolt, Carriage |
| 22 | 532 41 35-19 | Height Adjustment Lever, Rear |
| 23 | 532 16 76-53 | Knob, Height Adjustment Lever |
| 24 | 532 16 96-75 | Retainer Spring |
| 25 | 532 41 35-82 | Height Adjustment Lever, Front |
| 27 | 532 41 08-31 | Wheel & Tire Assembly |
| 28 | 532 08 83-48 | Washer, Flat |
| 29 | 532 19 74-80 | O-Ring |
| 30 | 532 41 35-20 | Bearing Assembly, Front Axle |
| 31 | 532 41 35-80 | Axle Assembly, Front |
| 32 | 532 40 00-94 | Fitting, Quick Release |
| 33 | 532 41 37-27 | Axle Assembly, Rear |
| 42 | 532 19 99-12 | Decal, Warning |
| 43 | 532 18 21-66 | Decal, Danger |
| 61 | 532 85 02-63 | Lock Washer 3/8 Helical Spring |
| 62 | 532 43 22-34 | Bushing |

NOTE: All component dimensions given in U.S. inches. 1 inch = 25.4 mm. **IMPORTANT:** Use only Original Equipment Manufacturer (O.E.M.) replacement parts. Failure to do so could be hazardous, damage your lawn mower and void your warranty.