

# Rider 16C AWD

**Spare parts**

**Ersatzteile**

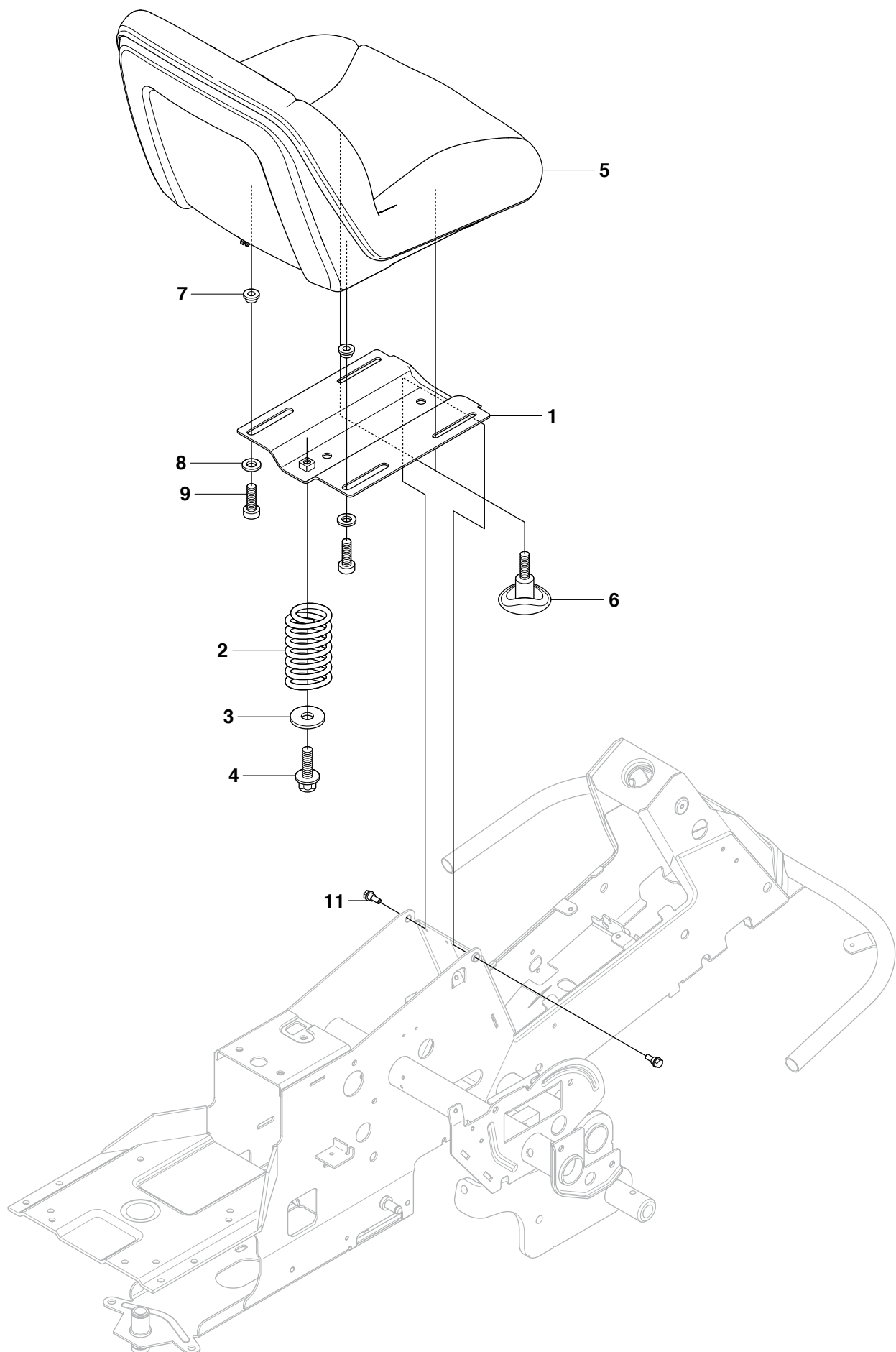
**Pièces détachées**

**Reserve onderdelen**

**Repuestos**

**Reservdelar**

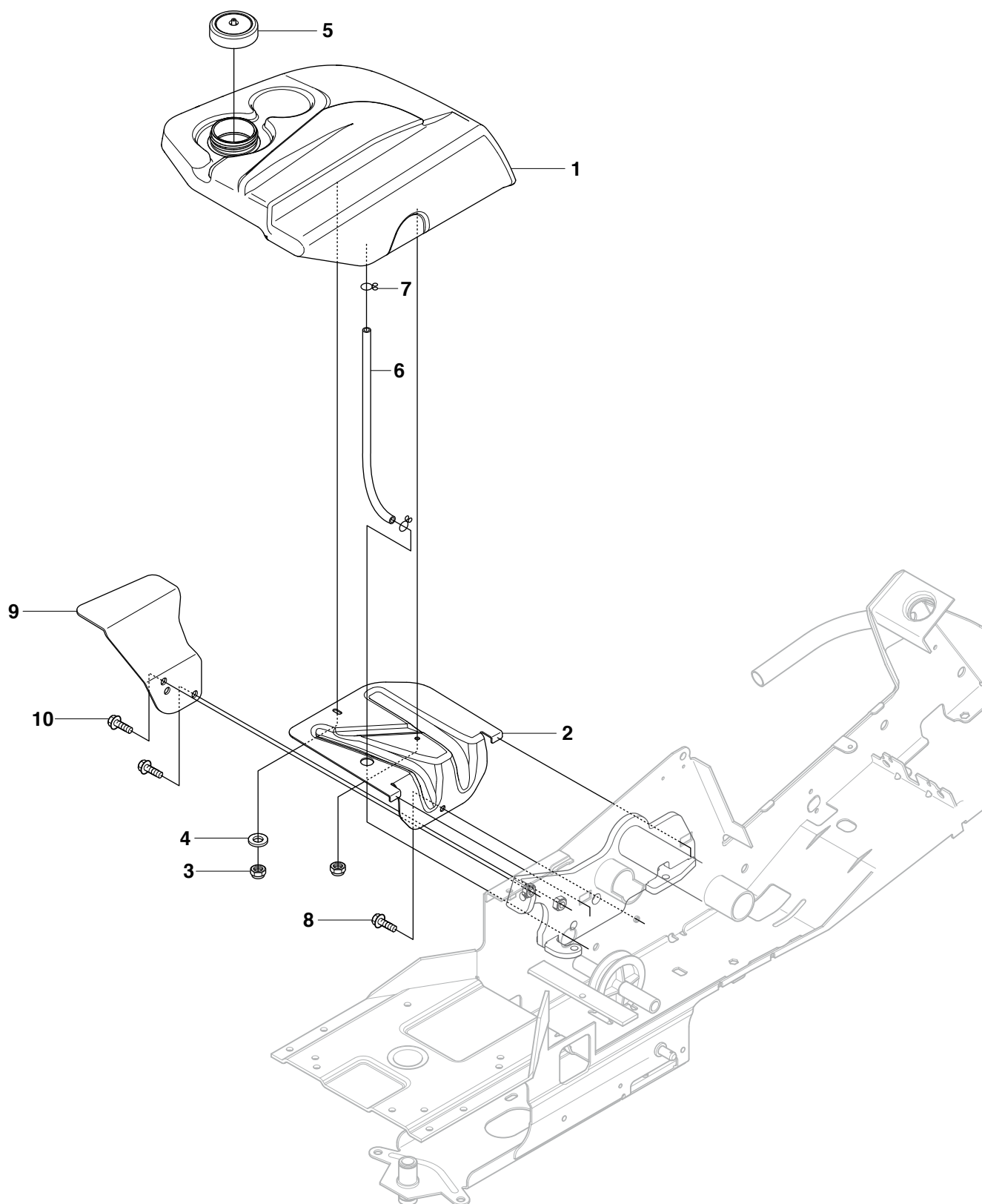
**A** R16C AWD  
SEAT



Page A    R16C AWD    SEAT				
Position	Article	Quantity	Notes	Kit
1	544 32 85-03	1		
2	506 91 53-01	1		
3	734 11 74-41	1		
4	725 24 93-71	1		
5	544 43 33-01	1		
6	506 56 55-01	2		
7	506 56 53-01	2		
8	734 11 64-41	2		
9	506 55 63-01	2		
11	506 59 74-01	1		

5442501-C

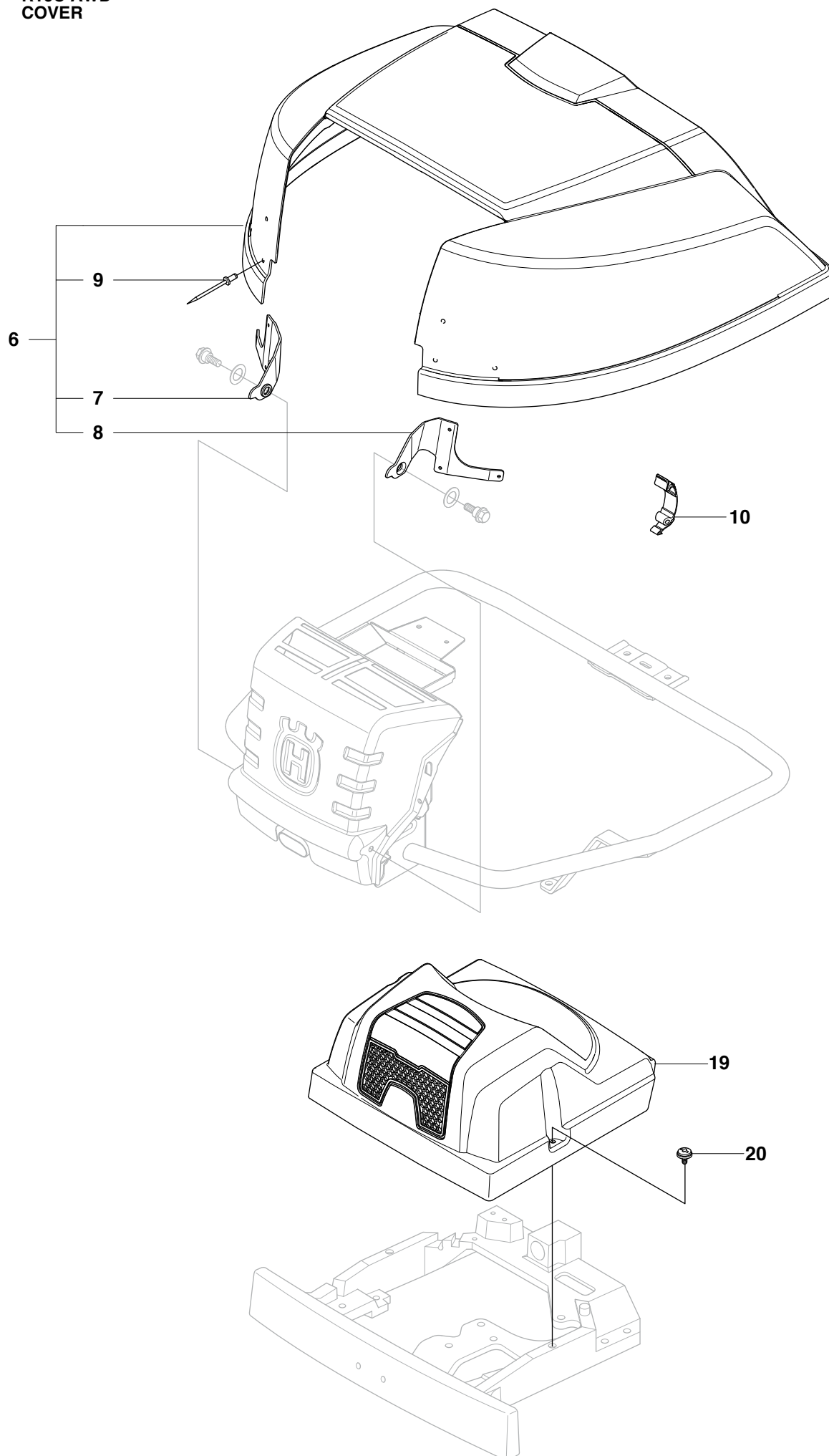
**B** R16C AWD  
FUEL SYSTEM



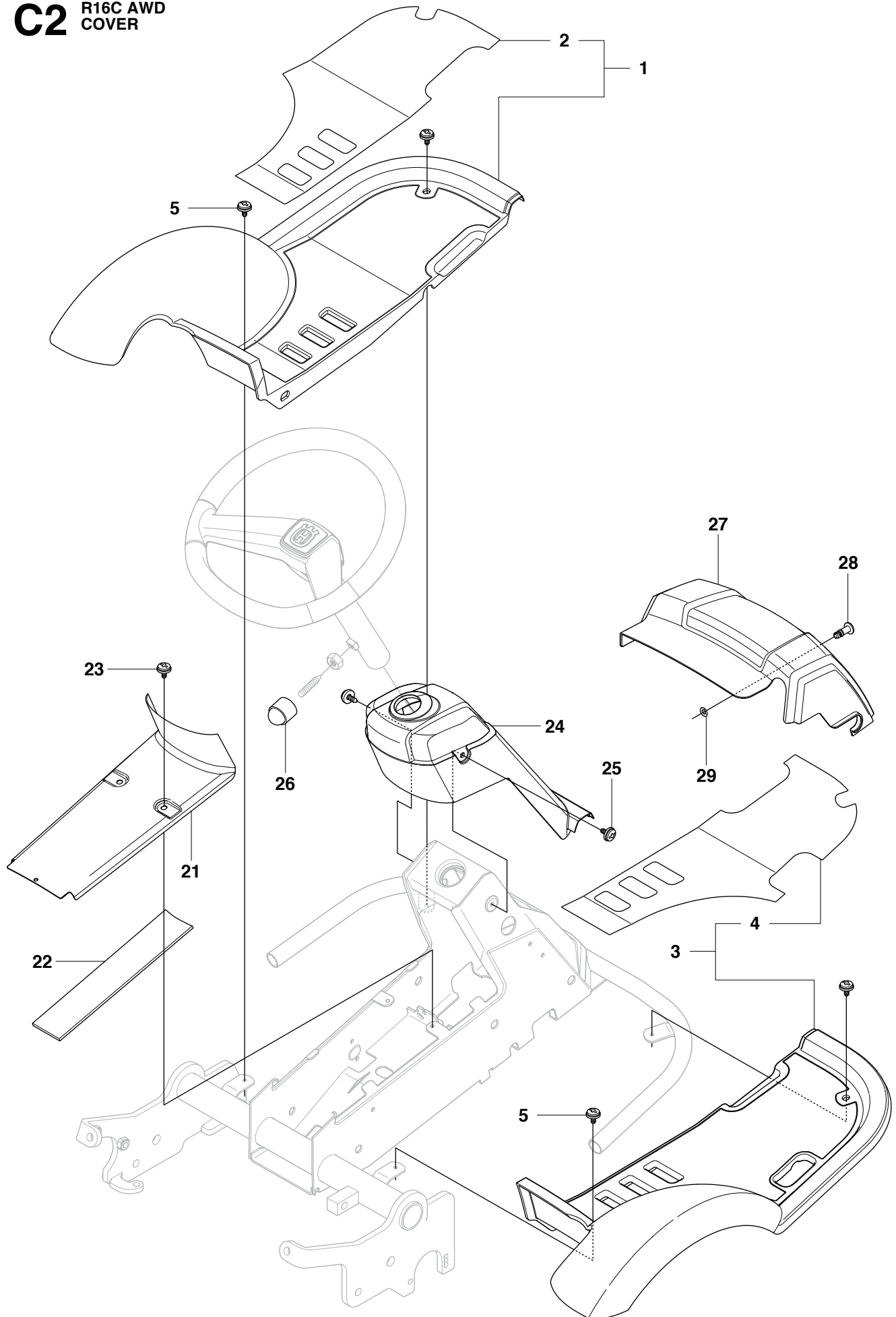
Page B    R16C AWD    FUEL SYSTEM				
Position	Article	Quantity	Notes	Kit
1	535 50 13-01	1		
2	544 32 93-01	1		
3	732 21 16-01	2		
4	734 11 56-01	1		
5	506 67 33-01	1		
6	504 80 00-07	1		
7	535 46 97-01	2		
8	725 23 64-61	1		
9	501 02 03-01	1		
10	725 24 93-71	2		

54425201-J

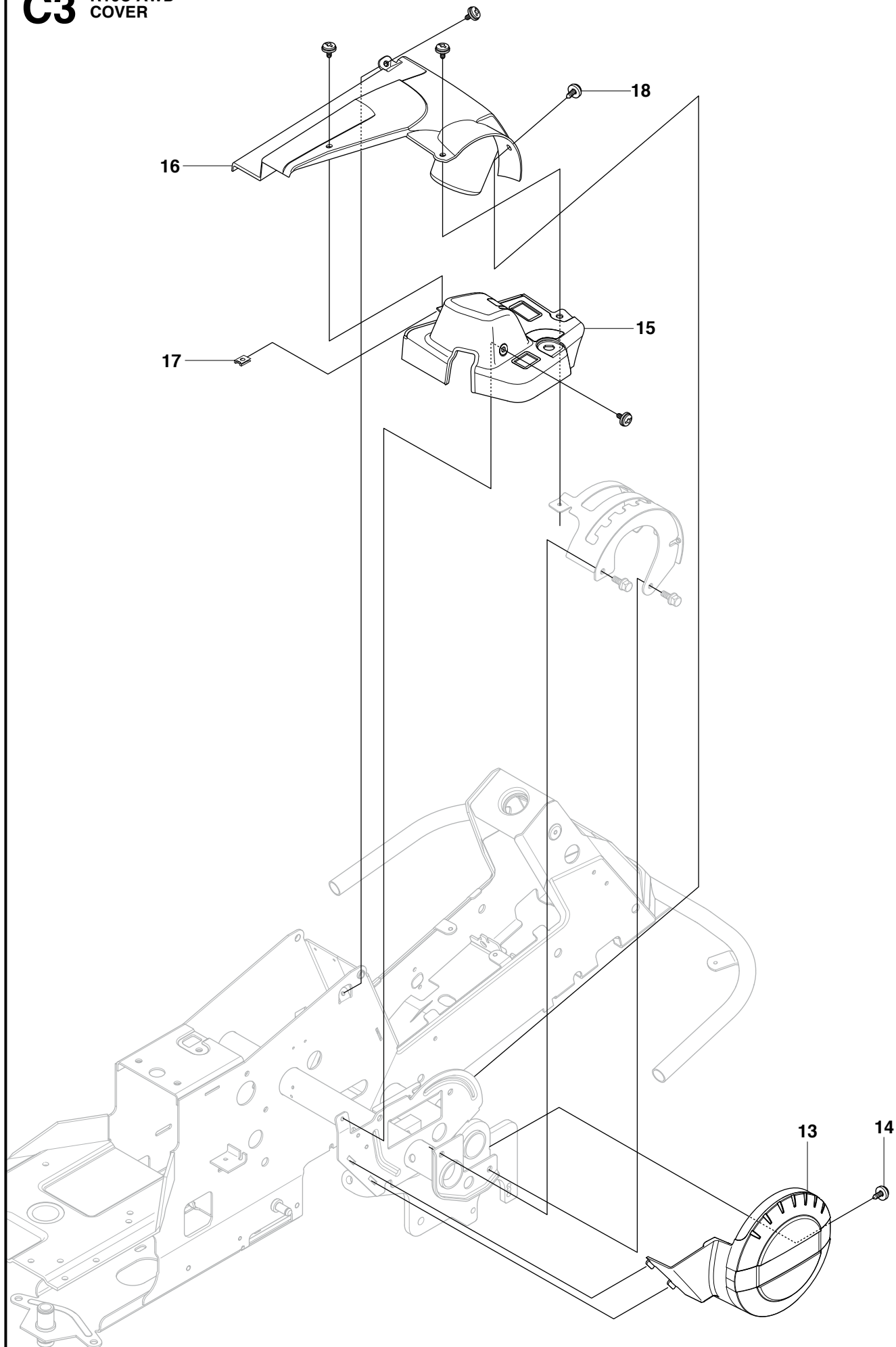
# C1 R16C AWD COVER



# C2 R16C AWD COVER



# C3 R16C AWD COVER

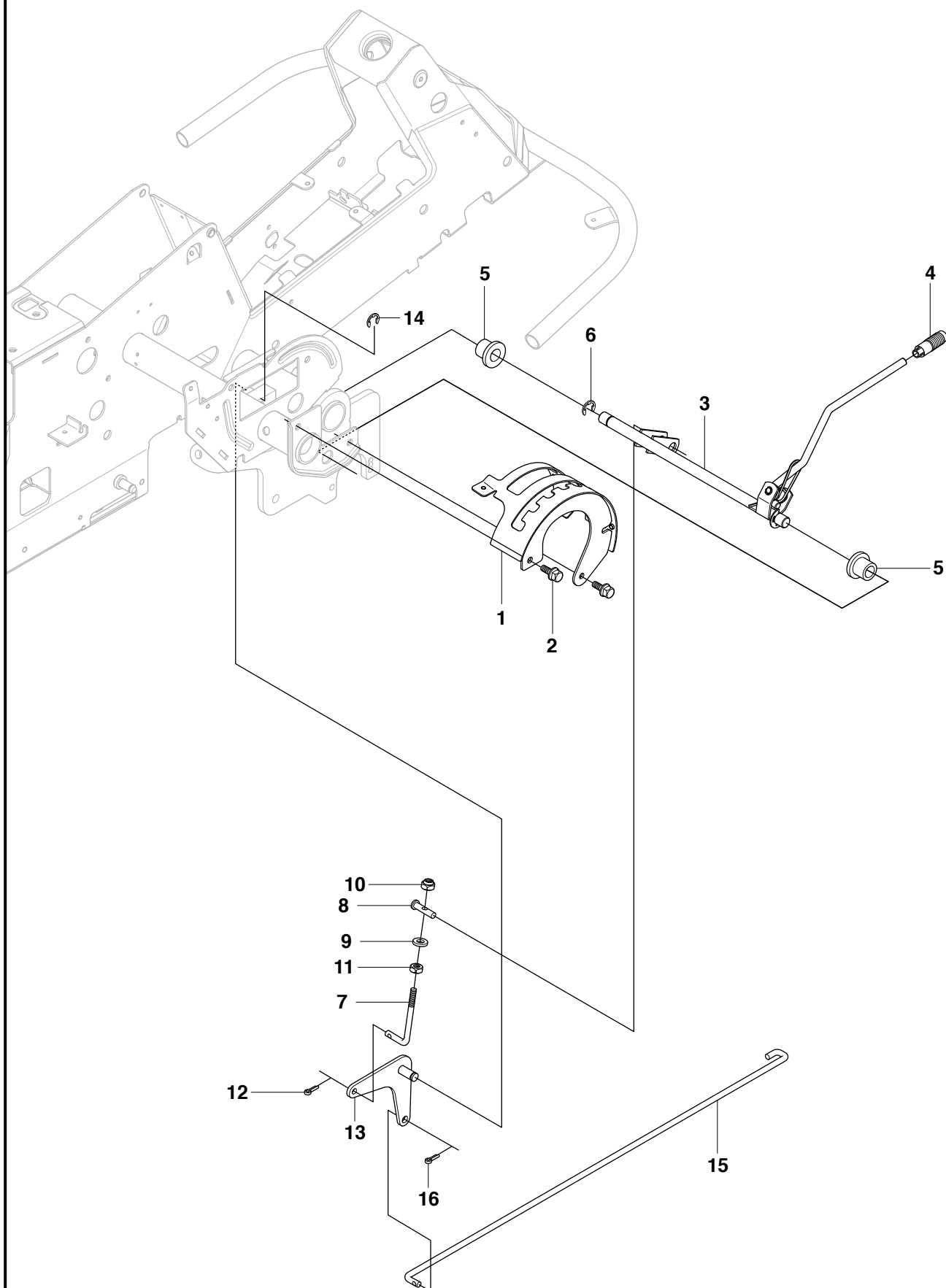




Page C R16C AWD COVER				
Position	Article	Quantity	Notes	Kit
1	544 89 59-01	1		
2	544 24 84-01	1		1
3	544 89 59-03	1		
4	544 24 84-03	1		3
5	544 40 05-01	4		
6	544 24 76-02	1		
7	544 24 77-01	1		6
8	544 24 77-02	1		6
9	722 79 54-02	6		6
10	503 89 47-03	1		
13	535 50 25-01	1		
14	544 40 05-01	1		
15	544 33 21-03	1		
16	544 33 22-02	1		
17	535 42 91-01	1		
18	544 40 05-01	4		
19	574 85 61-01	1		
20	544 40 05-01	2		
21	544 23 92-01	1		
22	544 42 75-01	1		
23	544 40 05-01	2		
24	544 32 65-01	1		
25	544 40 05-01	2		
26	544 43 32-01	1		
27	544 37 42-01	1		
28	525 39 06-01	1		
29	506 96 36-01	1		

54425402-N

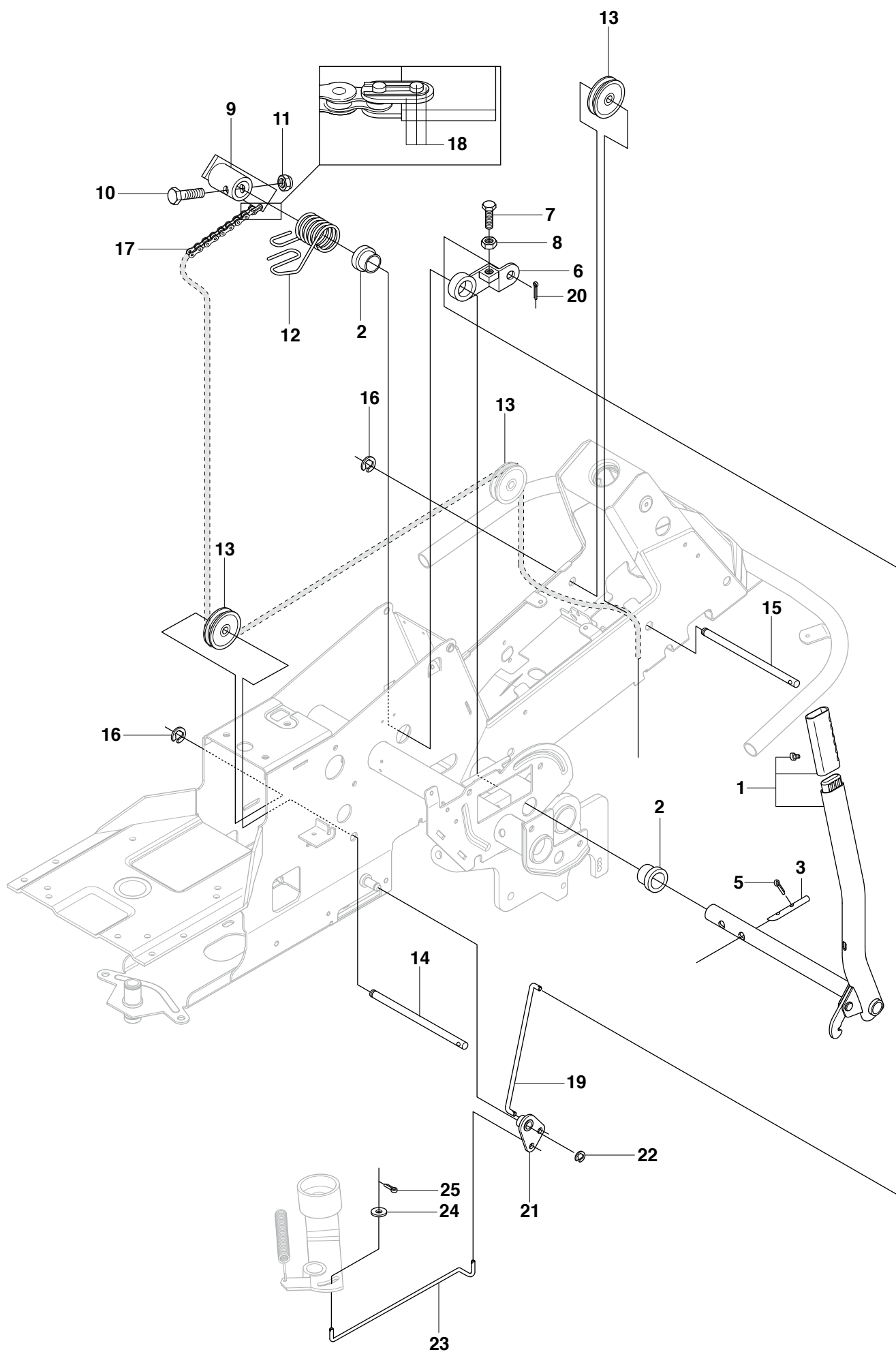
# D R16C AWD HEIGHT ADJUSTMENT



Page D    R16C AWD    HEIGHT ADJUSTMENT				
Position	Article	Quantity	Notes	Kit
1	535 50 14-01	1		
2	506 57 01-03	2		
3	504 73 45-01	1		
4	506 54 20-01	1		
5	506 55 43-01	2		
6	735 31 22-20	1		
7	506 90 82-01	1		
8	506 78 46-01	1		
9	734 11 72-01	1		
10	732 21 18-01	1		
11	731 23 18-01	1		
12	721 61 83-01	1		
13	544 22 77-01	1		
14	735 31 15-20	1		
15	544 22 70-01	1		
16	721 61 83-01	1		

5442901-H

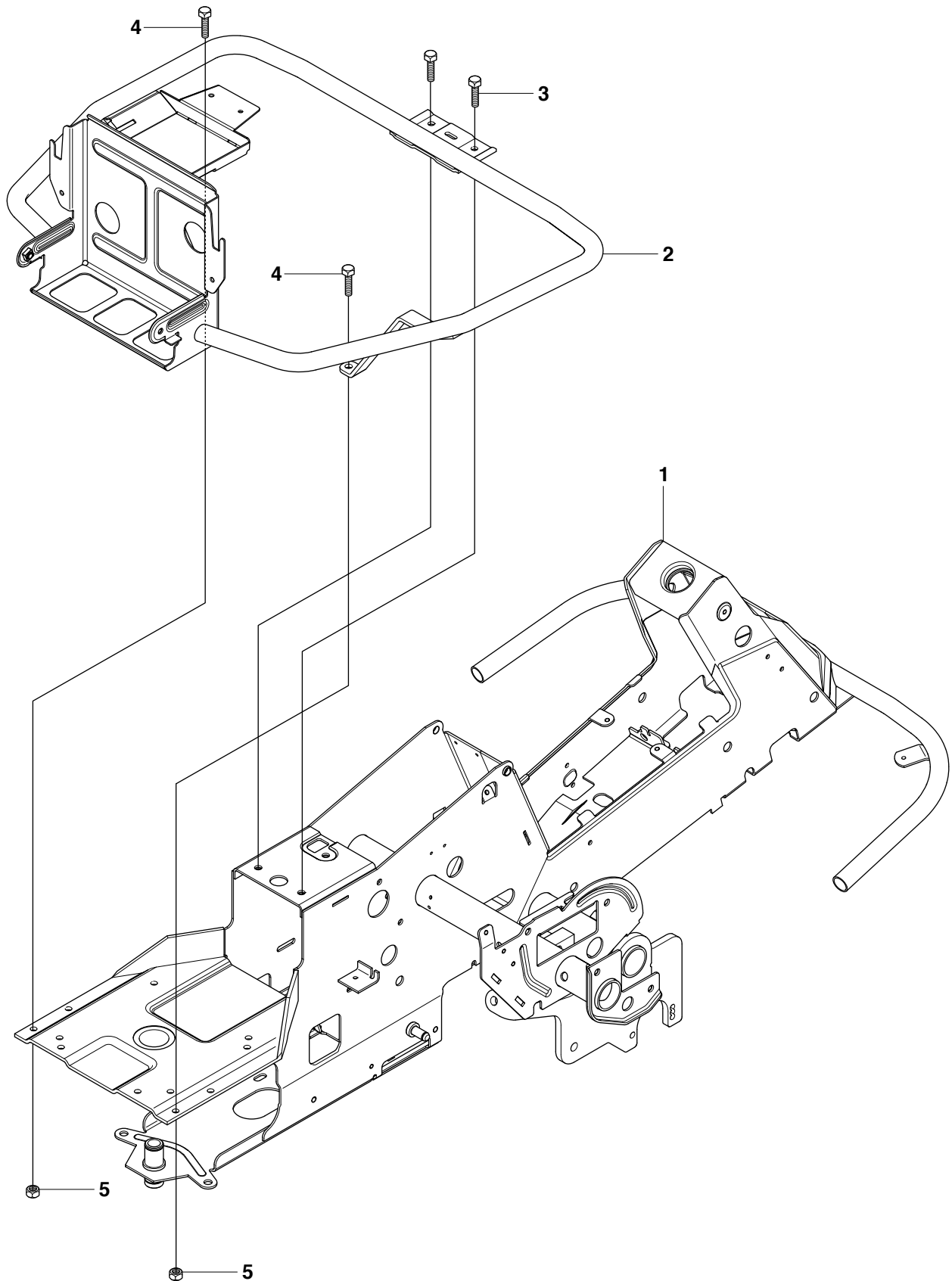
# **E** R16C AWD MOWER LIFT



Page E      R16C AWD      MOWER LIFT				
Position	Article	Quantity	Notes	Kit
1	501 01 86-01	1		
2	506 55 65-01	2		
3	525 40 66-01	1		
5	721 61 83-01	1		
6	506 78 43-01	1		
7	725 24 97-51	1		
8	731 23 20-51	1		
9	544 43 36-01	1		
10	725 25 42-51	1		
11	732 25 22-01	1		
12	506 91 68-01	1		
13	506 90 56-01	2		
14	506 90 57-01	1		
15	506 90 57-02	1		
16	735 31 18-20	2		
17	506 55 46-09	1		
18	506 55 47-01	1		
19	544 45 69-01	1		
20	721 61 83-01	1		
21	544 37 86-01	1		
22	735 31 14-20	1		
23	544 44 88-01	1		
24	734 11 64-41	1		
25	721 61 83-01	1		

54425701-J

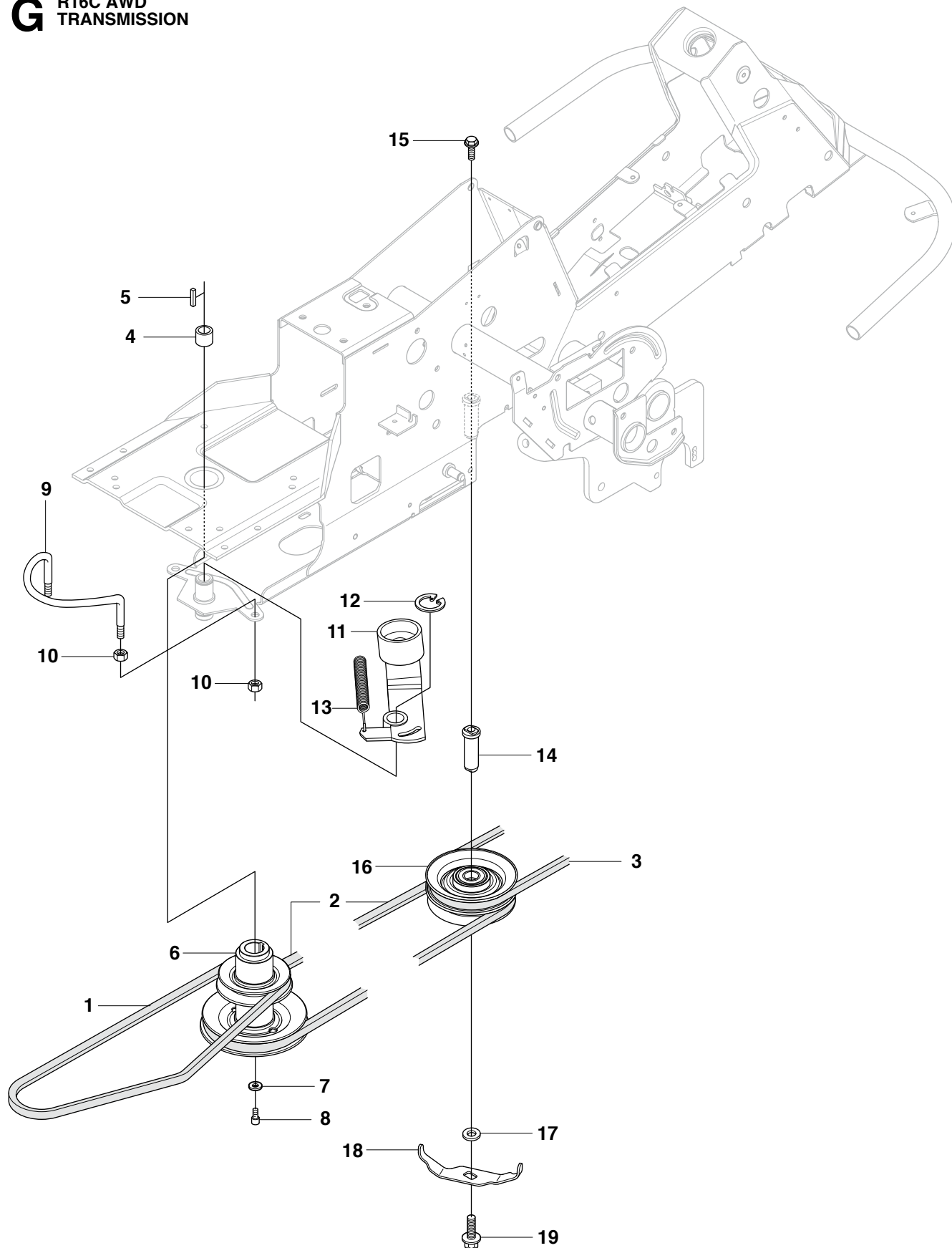
**F** R16C AWD  
CHASSIS



Page F     R16C AWD     CHASSIS				
Position	Article	Quantity	Notes	Kit
1	544 84 24-01	1		
2	544 24 45-02	1		
3	506 57 01-03	2		
4	725 24 51-71	2		
5	732 21 18-01	2		

54425204-K

**G R16C AWD  
TRANSMISSION**

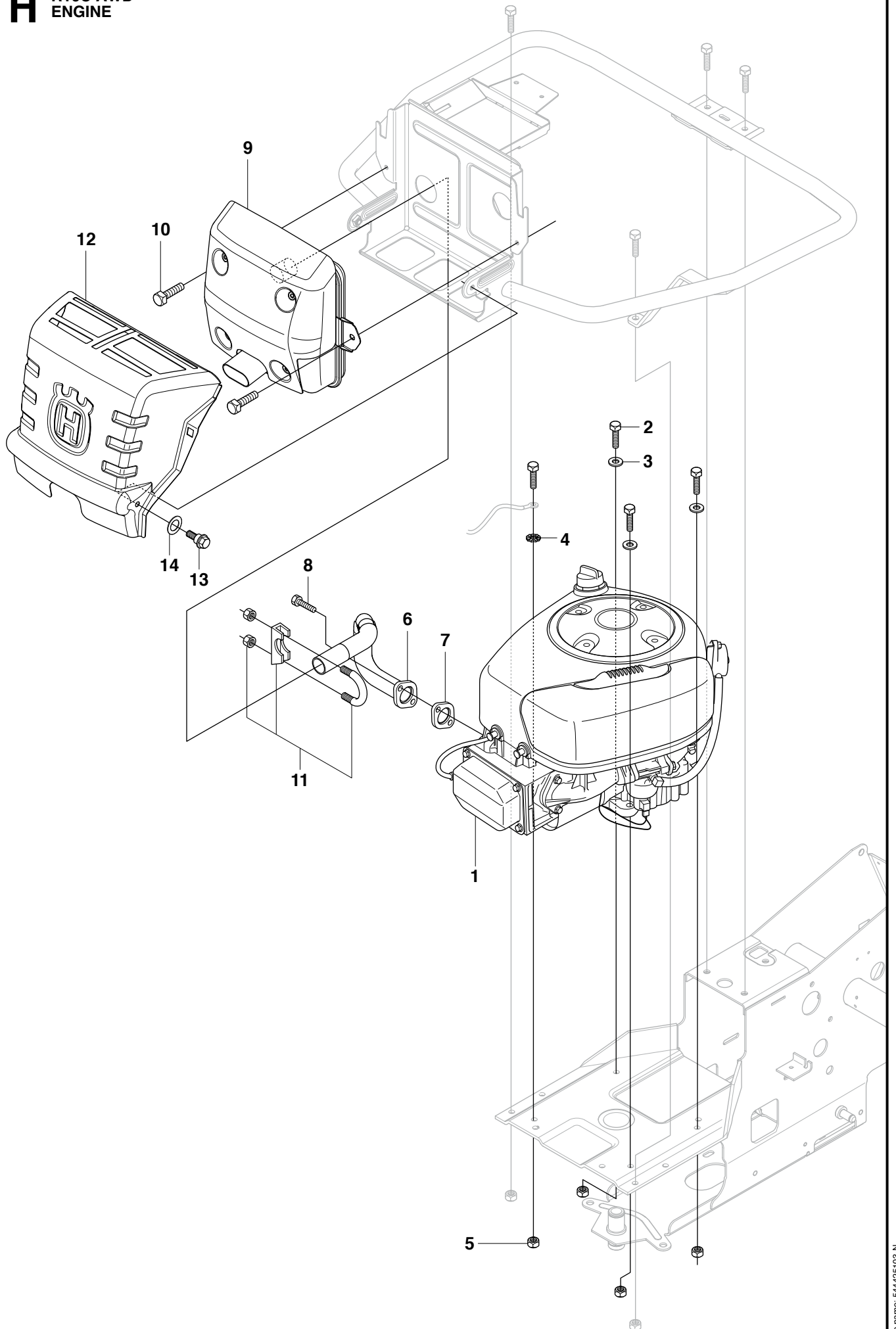




Page G    R16C AWD    TRANSMISSION				
Position	Article	Quantity	Notes	Kit
1	506 98 83-01	1		
2	544 40 02-01	1		
3	544 23 89-01	1		
4	506 50 92-01	1		
5	506 55 59-01	1		
6	535 48 24-01	1		
7	506 59 75-01	1		
8	506 55 60-02	1		
9	506 66 45-01	1		
10	731 23 20-51	4		
11	535 48 44-01	1		
12	735 31 26-00	1		
13	506 66 56-01	1		
14	544 42 61-01	1		
15	506 67 54-02	1		
16	535 48 22-01	1		
17	506 77 57-01	1		
18	544 40 53-01	1		
19	506 57 01-05	1		

5442404-G

**H** R16C AWD  
ENGINE

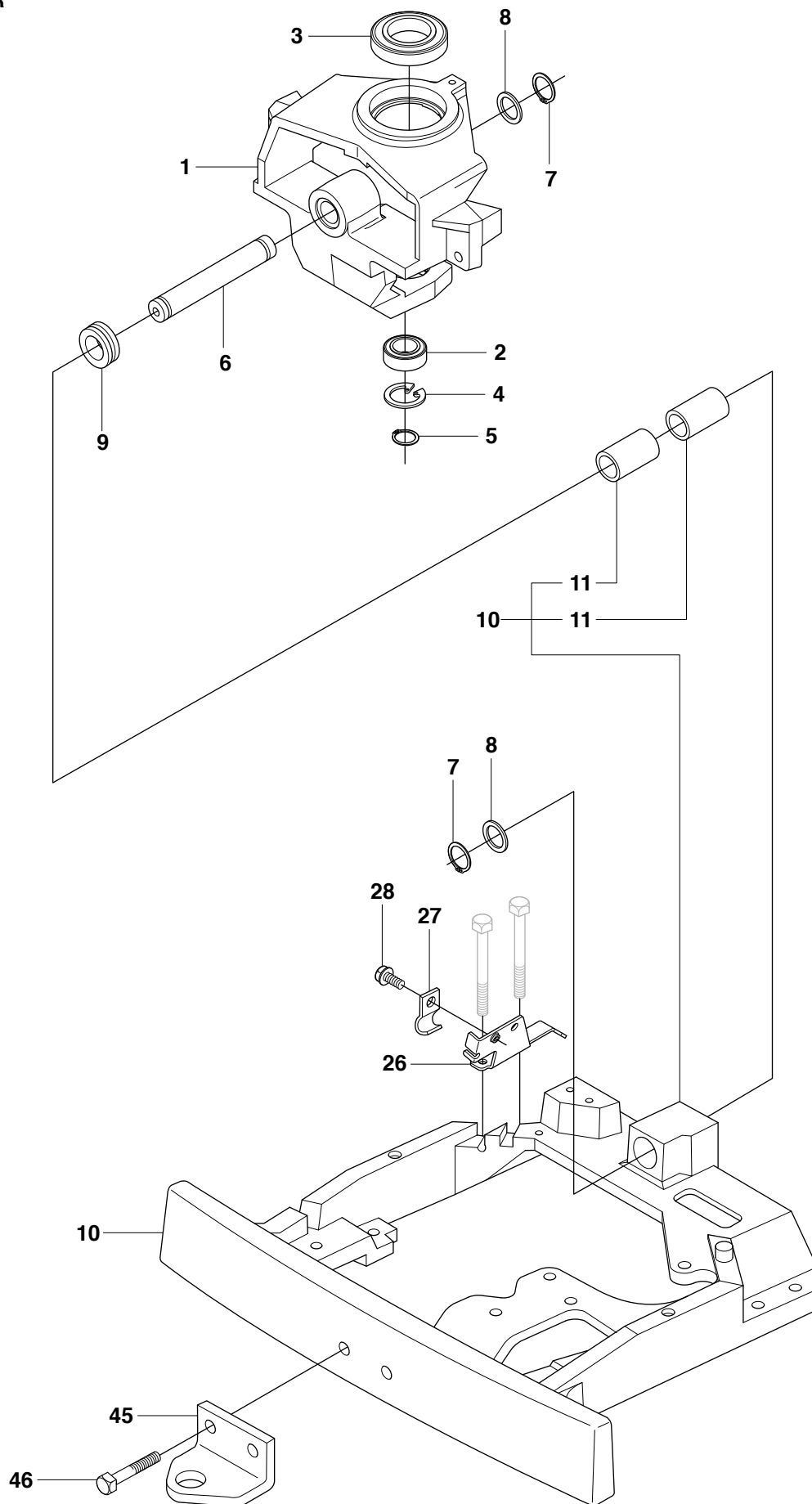


Page H    R16C AWD    ENGINE				
Position	Article	Quantity	Notes	Kit
1	544 45 28-01	1		
2	725 24 57-51	4		
3	734 11 64-01	3		
4	735 21 64-00	1		
5	732 21 18-01	4		
6	535 50 06-02	1		
7	506 91 45-01	1		
8	506 55 63-01	2		
9	544 33 57-01	1		
10	725 23 64-61	2		
11	506 66 84-01	1		
12	544 24 83-01	1		
13	506 59 74-01	2		
14	506 83 94-01	2		

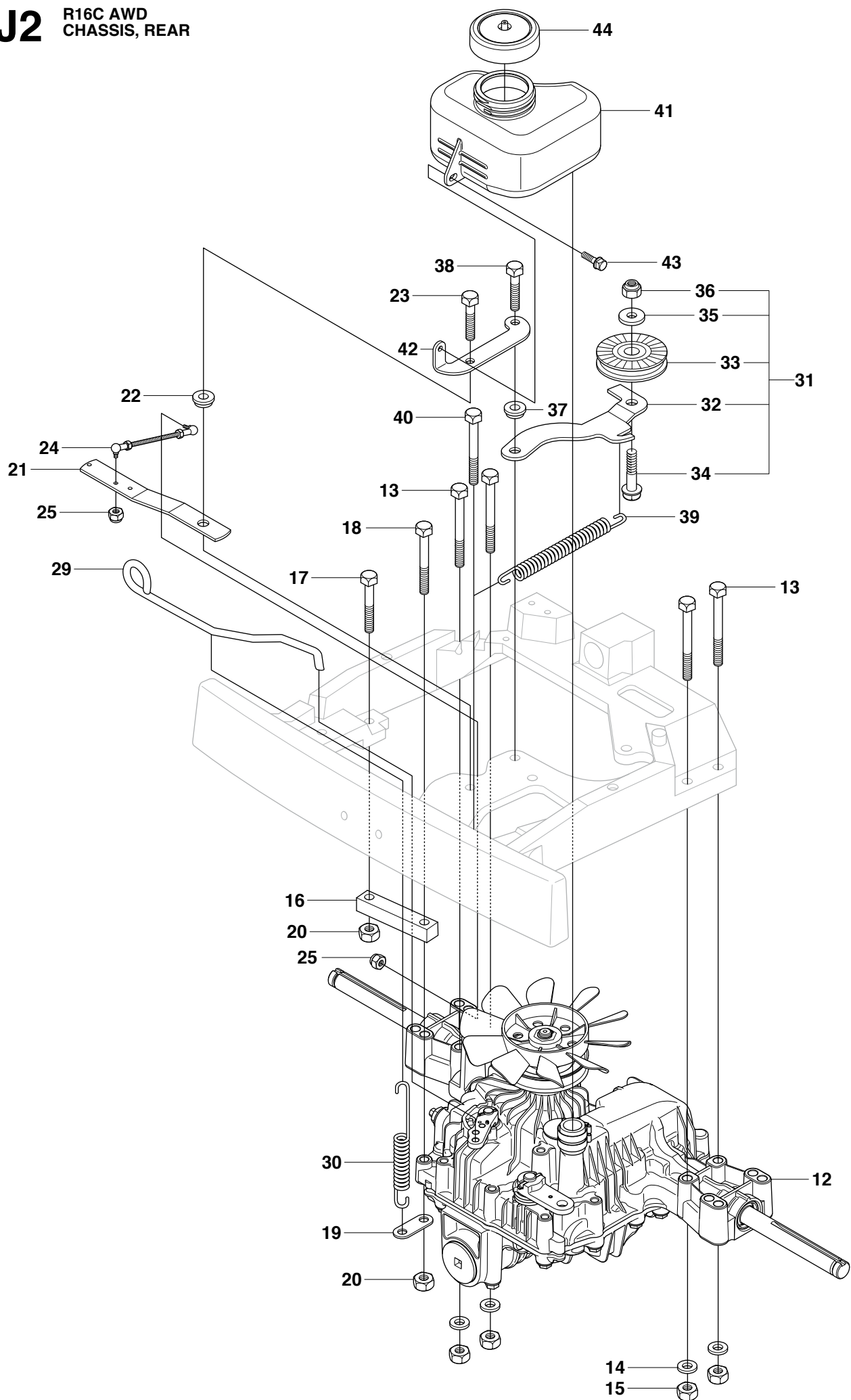
54425103-N

# J1

R16C AWD  
CHASSIS, REAR



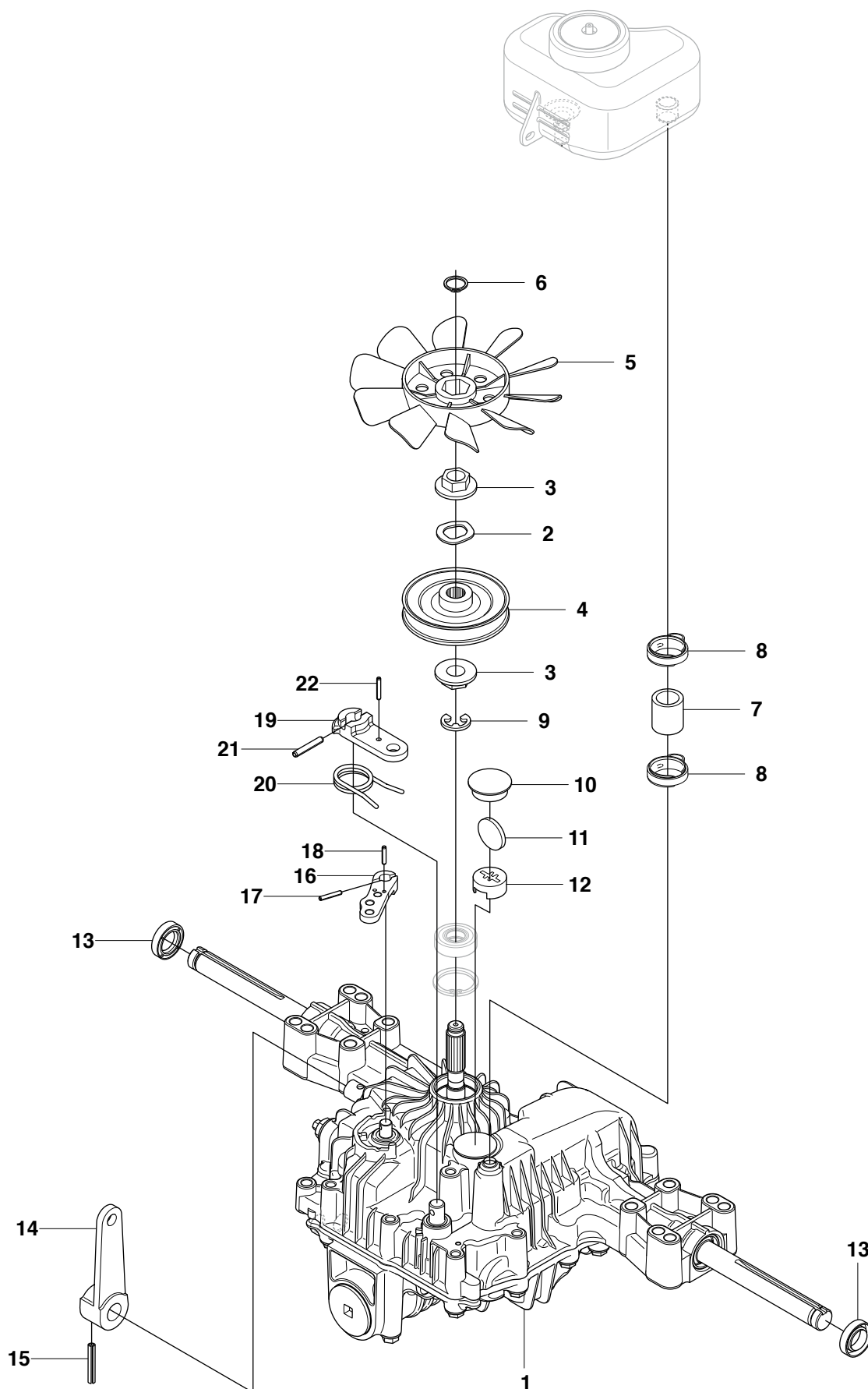
# J2 R16C AWD CHASSIS, REAR



Page J R16C AWD CHASSIS, REAR				
Position	Article	Quantity	Notes	Kit
1	506 98 58-03	1		
2	738 21 05-04	1		
3	738 21 10-04	1		
4	735 31 40-10	1		
5	735 31 26-00	1		
6	506 98 59-01	1		
7	735 31 26-00	2		
8	506 77 34-01	2		
9	740 68 14-21	1		
10	535 40 60-01	1		
11	506 98 61-02	2		10
12	544 11 61-01	1		
13	725 24 67-51	4		
14	734 11 64-01	4		
15	731 23 18-01	4		
16	506 98 72-01	1		
17	725 24 59-51	1		
18	725 24 62-51	1		
19	506 59 93-01	1		
20	731 23 18-01	2		
21	506 98 74-03	1		
22	506 91 87-02	1		
23	725 24 51-51	1		
24	506 98 75-01	1		
25	732 21 14-01	2		
26	544 26 21-01	1		
27	506 56 65-01	1		
28	725 23 64-61	1		
29	506 98 82-01	1		
30	506 83 43-01	1		
31	506 98 84-01	1		
32	506 98 85-01	1		31
33	506 94 69-01	1		31
34	725 24 55-51	1		31
35	734 11 64-41	1		31
36	732 21 18-01	1		31
37	506 91 87-02	1		
38	725 24 51-51	1		
39	506 98 86-01	1		
40	725 24 64-51	1		
41	544 10 01-01	1		
42	544 12 17-01	1		
43	725 23 64-61	1		
44	506 67 33-01	1		
45	506 88 99-01	1		
46	725 24 93-71	2		

54451604-M

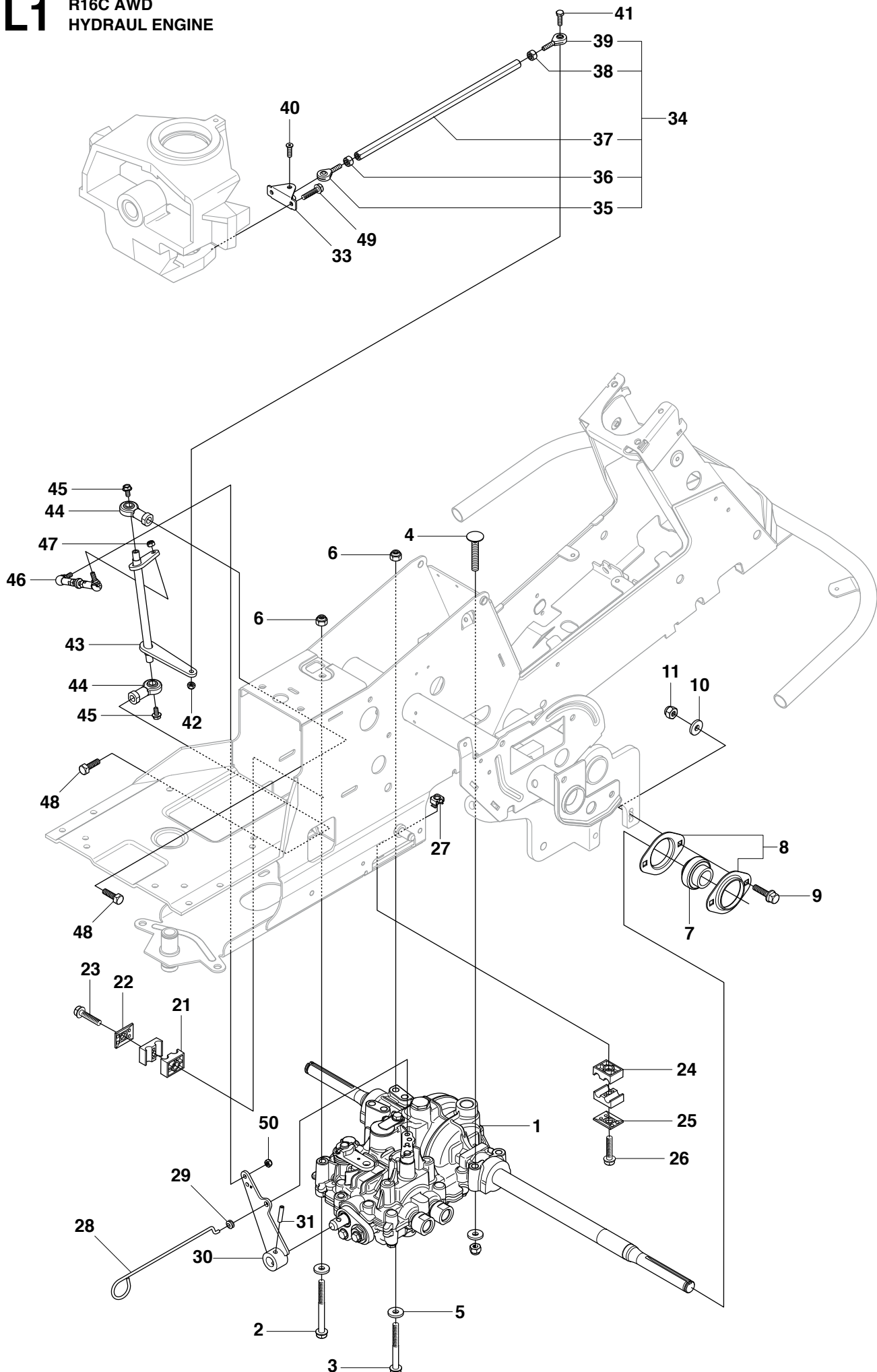
**K** R16C AWD  
HYDROSTAT K574 SP



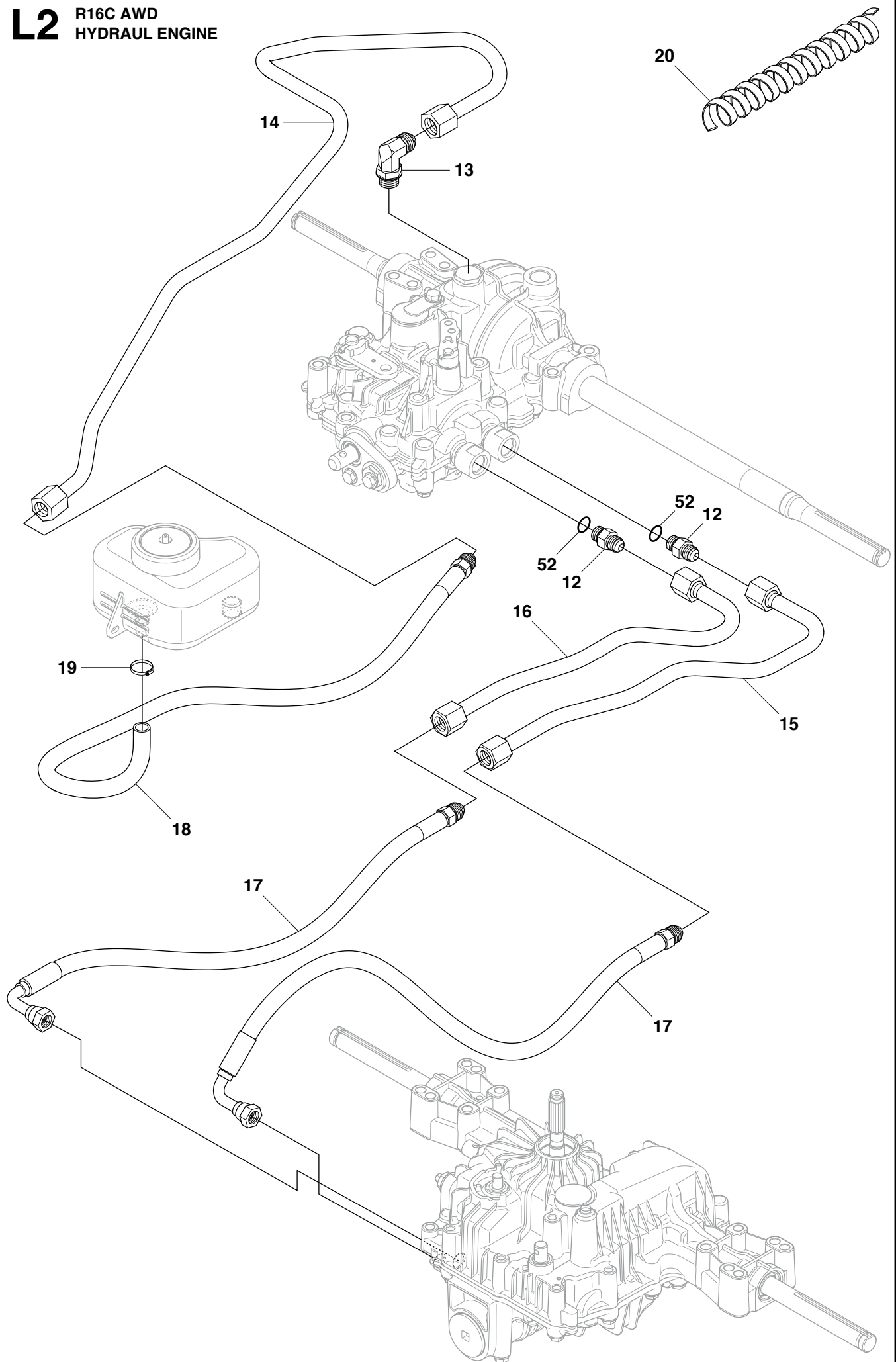
Page K      R16C AWD      HYDROSTAT				
Position	Article	Quantity	Notes	Kit
1	544 11 61-01	1		
2	506 98 65-01	1		
3	506 98 66-01	2		
4	502 45 19-01	1		
5	506 98 68-01	1		
6	735 31 15-00	1		
7	502 45 16-01	1		
8	506 98 70-01	2		
9	535 40 28-07	1		1
10	535 40 28-32	1		1
11	535 40 28-29	1		1
12	502 45 20-01	1		1
13	535 40 28-37	2		1
14	502 45 32-01	1		1
15	535 40 28-09	1		1
16	535 40 28-17	1		1
17	535 40 28-16	1		1
18	535 40 28-33	1		1
19	535 40 28-38	1		1
20	535 40 28-39	1		1
21	535 40 28-40	1		1
22	535 40 28-41	1		1

54451604-M



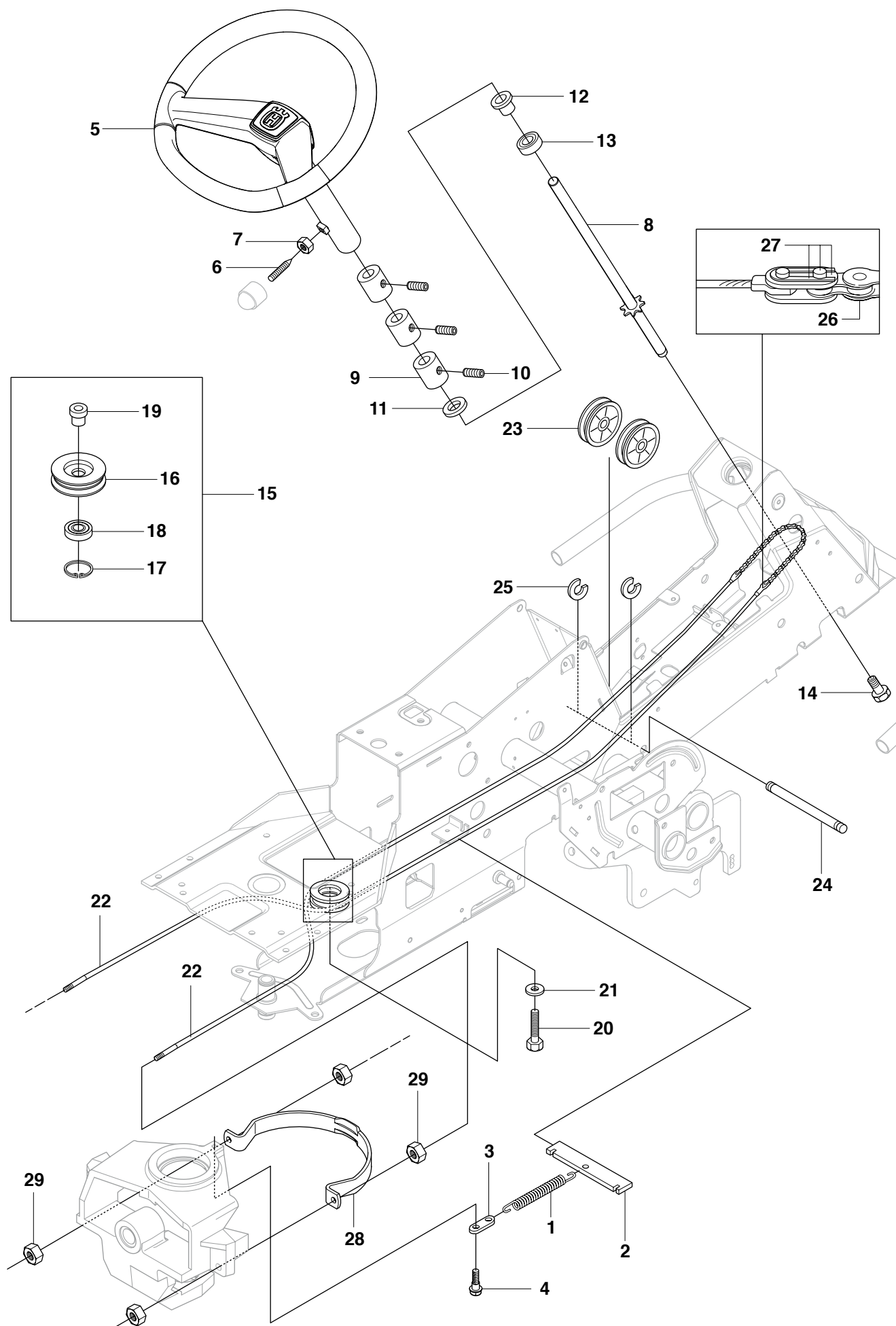
**L1****R16C AWD  
HYDRAUL ENGINE**

# L2 R16C AWD HYDRAUL ENGINE



Position	Article	Quantity	Notes	Kit
1	575 48 43-01	1		
2	725 24 67-51	1		
3	725 24 64-51	1		
4	535 42 38-03	1		
5	734 11 64-01	3		
6	732 21 18-01	3		
7	544 00 89-02	1		
8	544 00 90-02	1		
9	506 57 01-05	2		
10	734 11 64-01	2		
11	732 21 18-01	2		
12	535 42 68-06	2		
13	535 43 73-02	1		
14	525 49 12-01	1		
15	544 80 79-01	1		
16	544 80 80-01	1		
17	544 45 64-03	2		
18	522 42 98-02	1		
19	505 13 11-01	1		
20	544 02 66-03	1		
21	544 37 33-03	1		
22	535 43 85-01	1		
23	725 23 78-61	1		
24	544 37 33-02	1		
25	544 37 38-02	1		
26	506 57 01-07	1		
27	544 81 17-01	1		
28	535 49 97-01	1		
29	503 73 58-01	1		
30	544 43 52-01	1		
31	721 43 47-01	1		
33	535 49 28-02	1		
34	544 45 67-03	1		
35	535 48 66-02	1		34
36	503 22 10-18	1		34
37	535 48 65-03	1		34
38	731 23 16-01	1		34
39	535 48 66-01	1		34
40	544 84 17-01	1		
41	725 23 70-71	1		
42	732 25 16-01	1		
43	535 49 74-01	1		
44	506 95 17-01	2		
45	535 47 52-12	2		
46	544 44 19-01	1		
47	732 25 16-01	1		
48	725 24 93-71	2		
49	725 23 66-51	2		
50	732 21 16-01	1		
52	505 45 11-01	2		

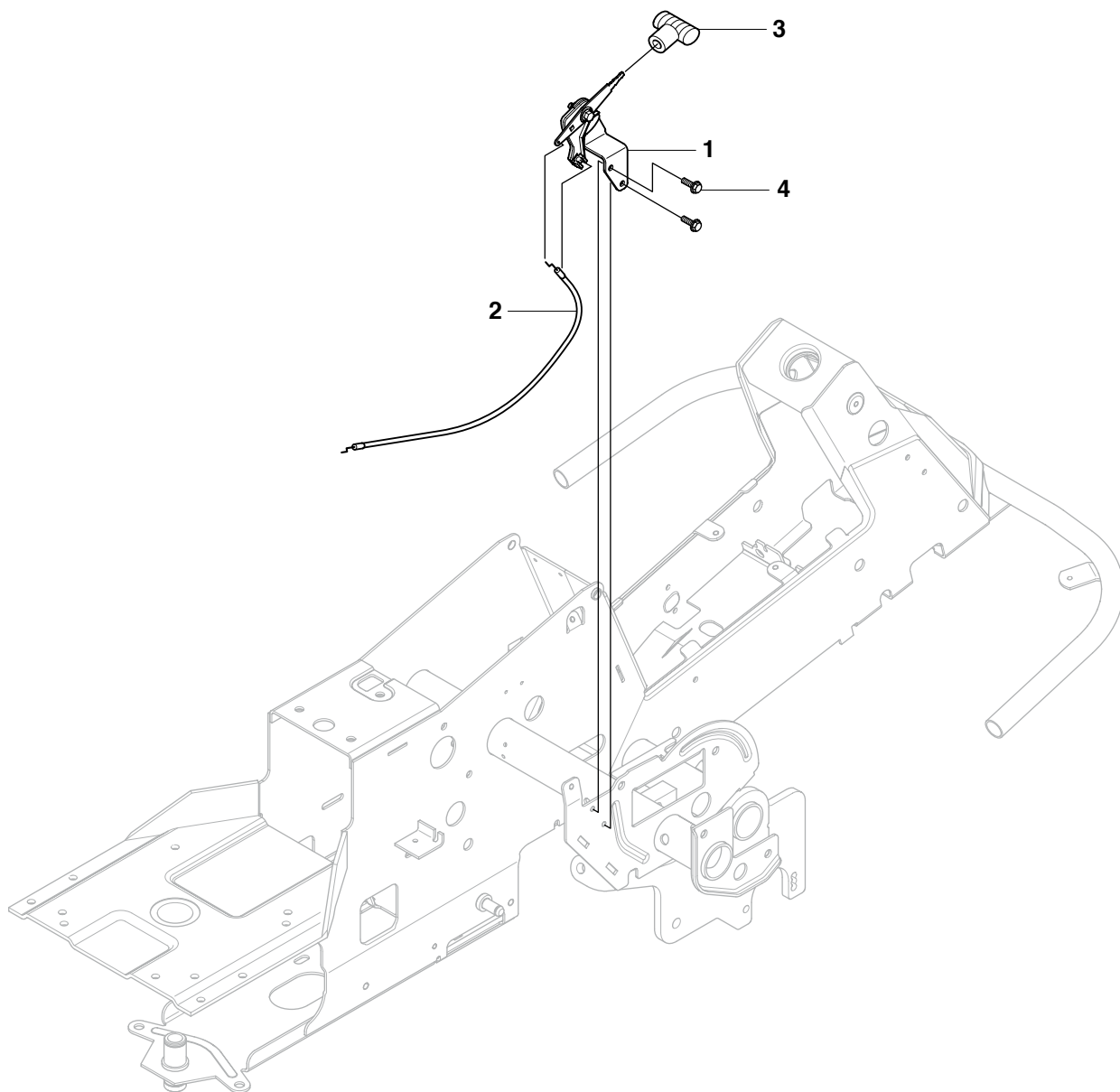
# M R16C AWD STEERING



Page M R16C AWD STEERING				
Position	Article	Quantity	Notes	Kit
1	506 67 19-01	1		
2	506 57 63-01	1		
3	506 67 08-01	1		
4	506 59 74-01	1		
5	544 37 52-02	1		
6	728 74 55-05	1		
7	731 23 18-01	1		
8	575 63 19-01	1		
9	506 86 34-01	3		
10	728 84 43-05	3		
11	506 86 36-01	1		
12	506 88 78-01	1		
13	738 21 04-04	1		
14	506 57 01-04	1		
15	506 50 09-03	1		
16	535 42 41-01	1		15
17	735 31 40-10	1		15
18	738 22 04-19	1		15
19	506 50 08-02	1		15
20	506 67 54-02	1		
21	734 11 74-41	1		
22	506 58 91-04	2		
23	506 52 24-01	2		
24	506 53 94-03	1		
25	735 31 14-20	2		
26	506 55 46-01	1		
27	506 55 47-01	2		
28	544 42 73-01	1		
29	731 23 20-51	4		

54429501-R

**N** R16C AWD  
CONTROLS



Page N     R16C AWD     CONTROLS				
Position	Article	Quantity	Notes	Kit
1	544 30 15-01	1		
2	544 30 17-01	1		
3	506 88 91-01	1		
4	725 23 64-61	2		

54425001-G

**P**



**PED**

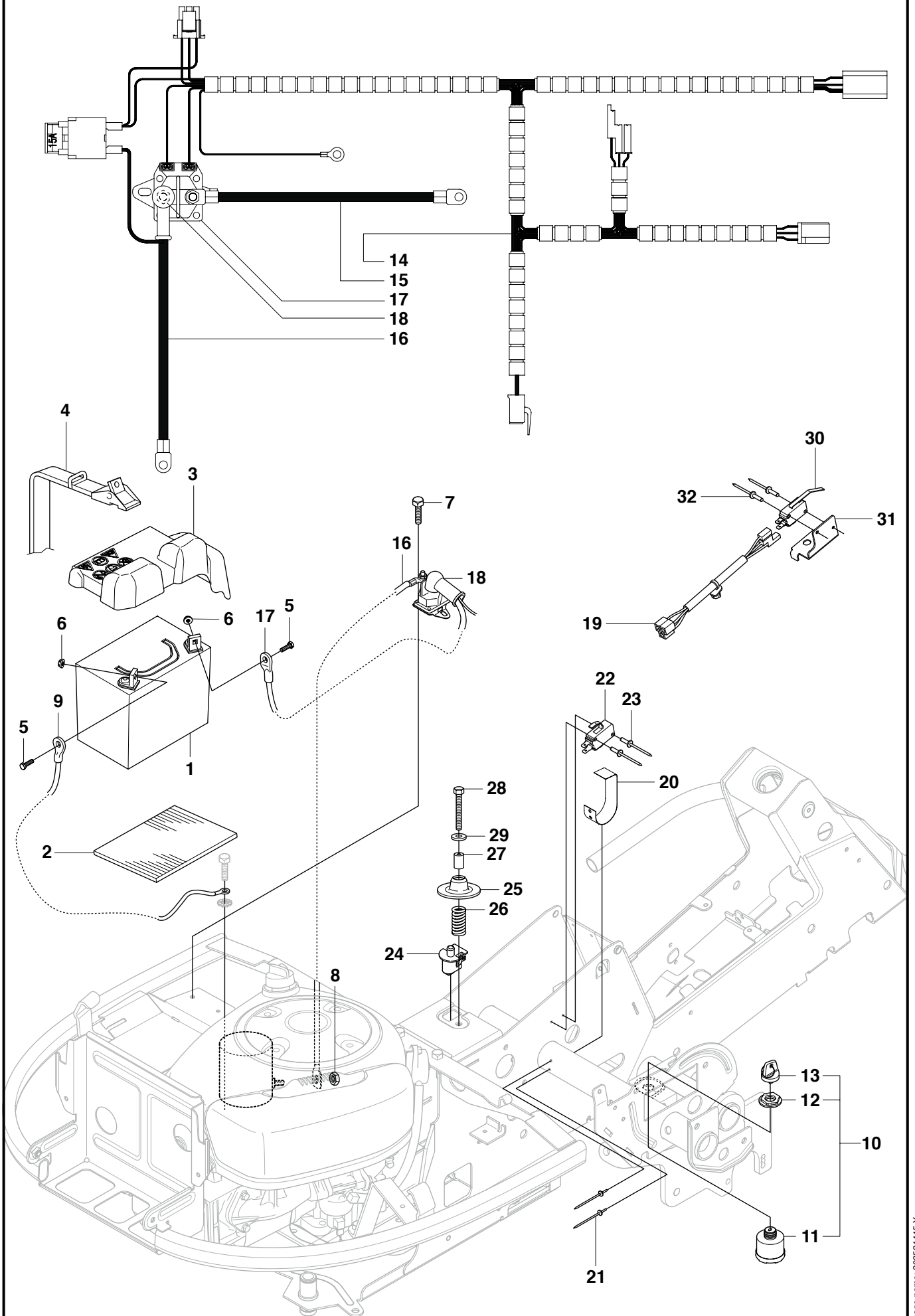




Page P      R16C AWD                      PEDALS				
Position	Article	Quantity	Notes	Kit
1	544 12 60-01	1		
2	535 47 37-01	1		
3	506 57 01-04	4		
4	544 40 31-01	1		
5	725 23 64-61	2		
6	506 94 63-01	1		
7	535 48 96-01	1		
8	735 31 09-20	1		
9	506 53 56-03	1		
10	574 41 12-02	1		
11	506 55 73-01	2		
12	732 21 14-01	2		
13	731 23 14-01	2		
14	522 43 08-01	1		
15	725 23 64-61	1		
16	738 21 02-04	1		1
17	535 48 02-01	1		1
18	535 48 06-01	1		1
19	535 48 07-01	1		1
20	535 48 08-01	4		1
21	535 48 09-01	1		1
22	535 48 10-01	1		1
23	535 47 88-01	1		1
24	535 47 88-02	1		1
25	506 57 64-02	1		

54451702-G

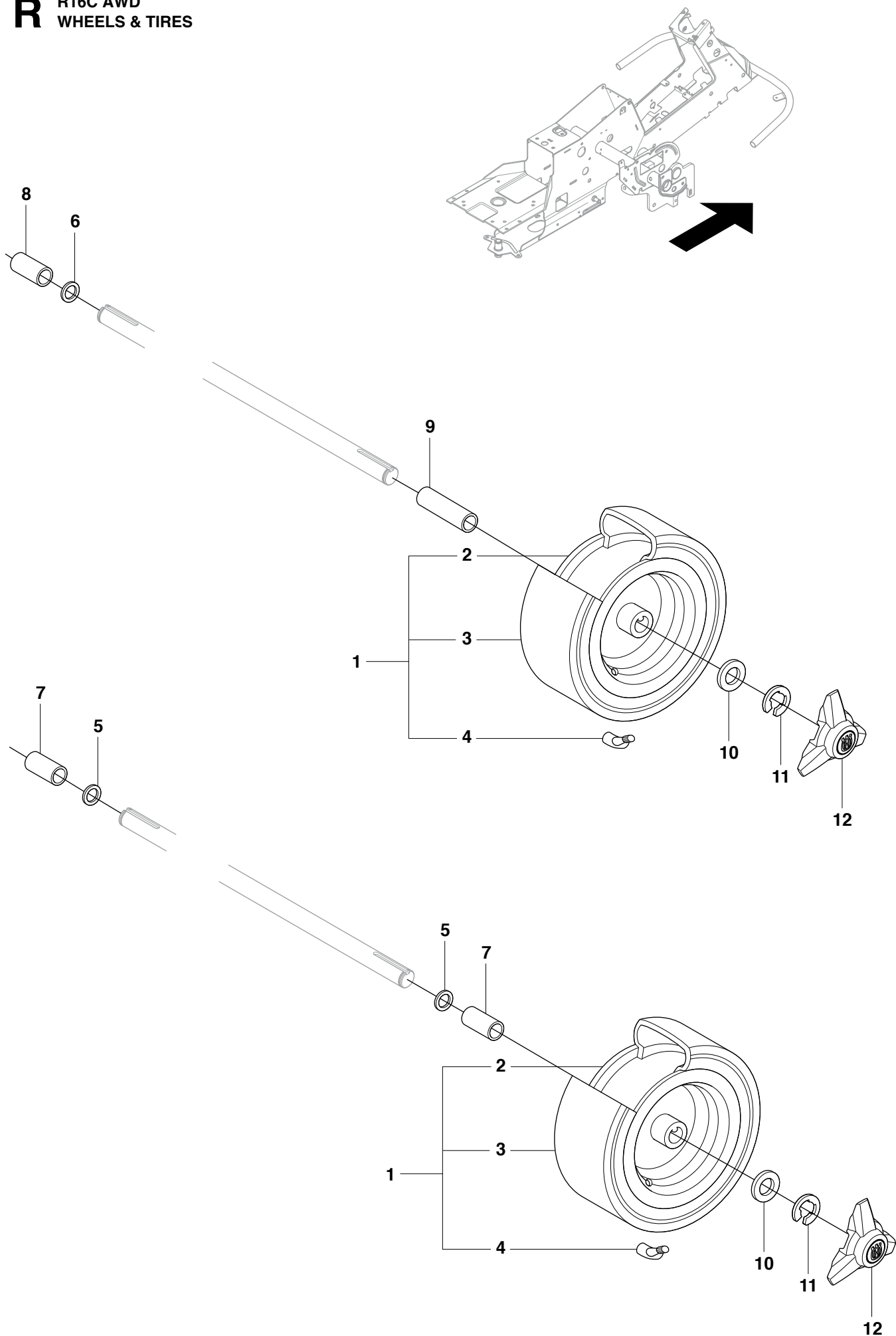
**Q R16C AWD  
ELECTRICAL**



Page Q R16C AWD ELECTRICAL				
Position	Article	Quantity	Notes	Kit
1	510 13 85-01	1		
2	535 44 11-01	1		
3	510 02 69-01	1		
4	506 83 68-02	1		
5	522 62 21-01	1		
6	522 62 43-01	1		
7	725 23 64-61	1		
8	506 89 98-01	1		
9	544 96 76-03	1		
10	544 44 21-01	1		
11	544 44 22-01	1		10
12	544 44 23-01	1		10
13	544 44 24-01	1		10
14	544 92 63-01	1		
15	544 92 86-01	1		
16	544 92 61-04	1		
17	544 43 98-01	1		
18	506 89 98-01	2	1/4" UNC	
19	576 18 54-01	1		
20	506 90 93-01	1		
21	722 78 39-02	2		
22	535 46 91-01	1		
23	544 44 07-01	2		
24	506 90 96-01	1		
25	506 90 97-01	1		
26	544 44 12-01	1		
27	506 90 99-02	1		
28	725 24 60-51	1		
29	734 11 64-01	1		
30	544 41 55-01	1		
31	544 41 57-01	1		
32	544 44 07-01	2		

54425302-Y

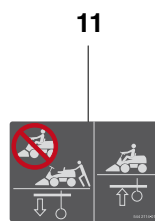
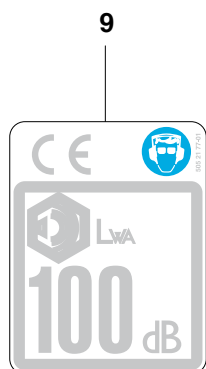
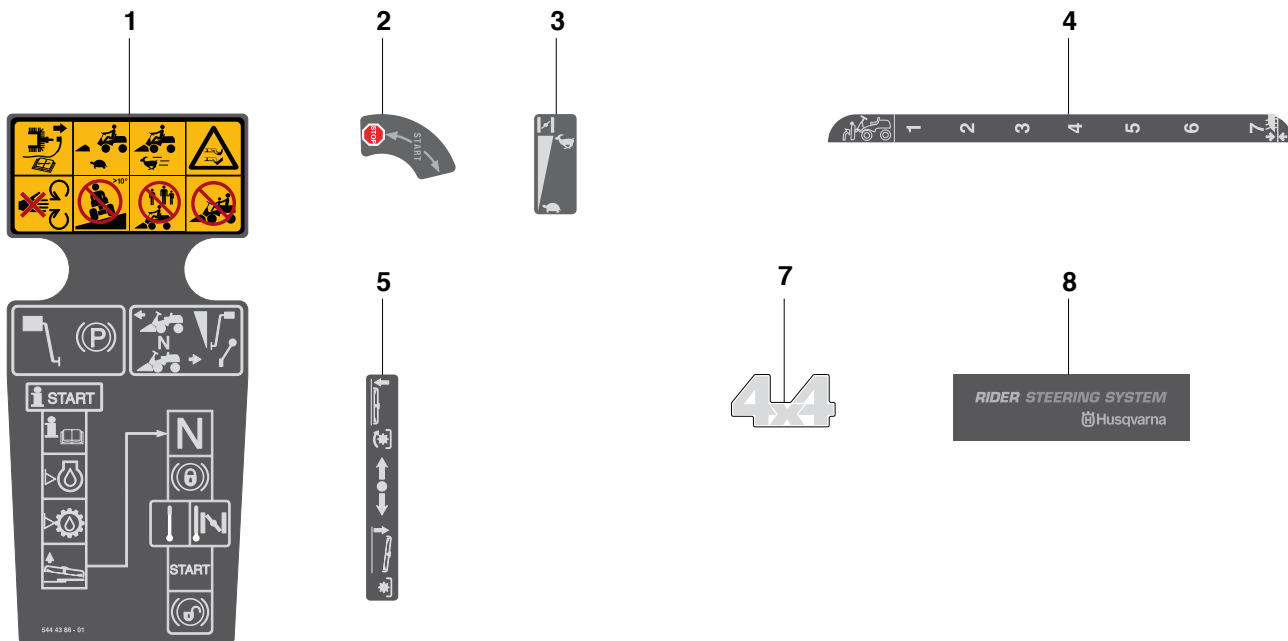
**R** R16C AWD  
WHEELS & TIRES



Position	Article	Quantity	Notes	Kit
1	523 01 26-02	4		
2	523 03 48-01	1		1
3	523 03 46-02	1		1
4	523 03 47-01	1		1
5	506 50 48-03	2		
6	506 94 58-01	1		
7	506 59 62-03	2		
8	544 13 26-01	1		
9	544 13 26-02	1		
10	506 50 48-05	4		
11	506 89 90-01	4		
12	544 35 35-01	4		

544126110-K

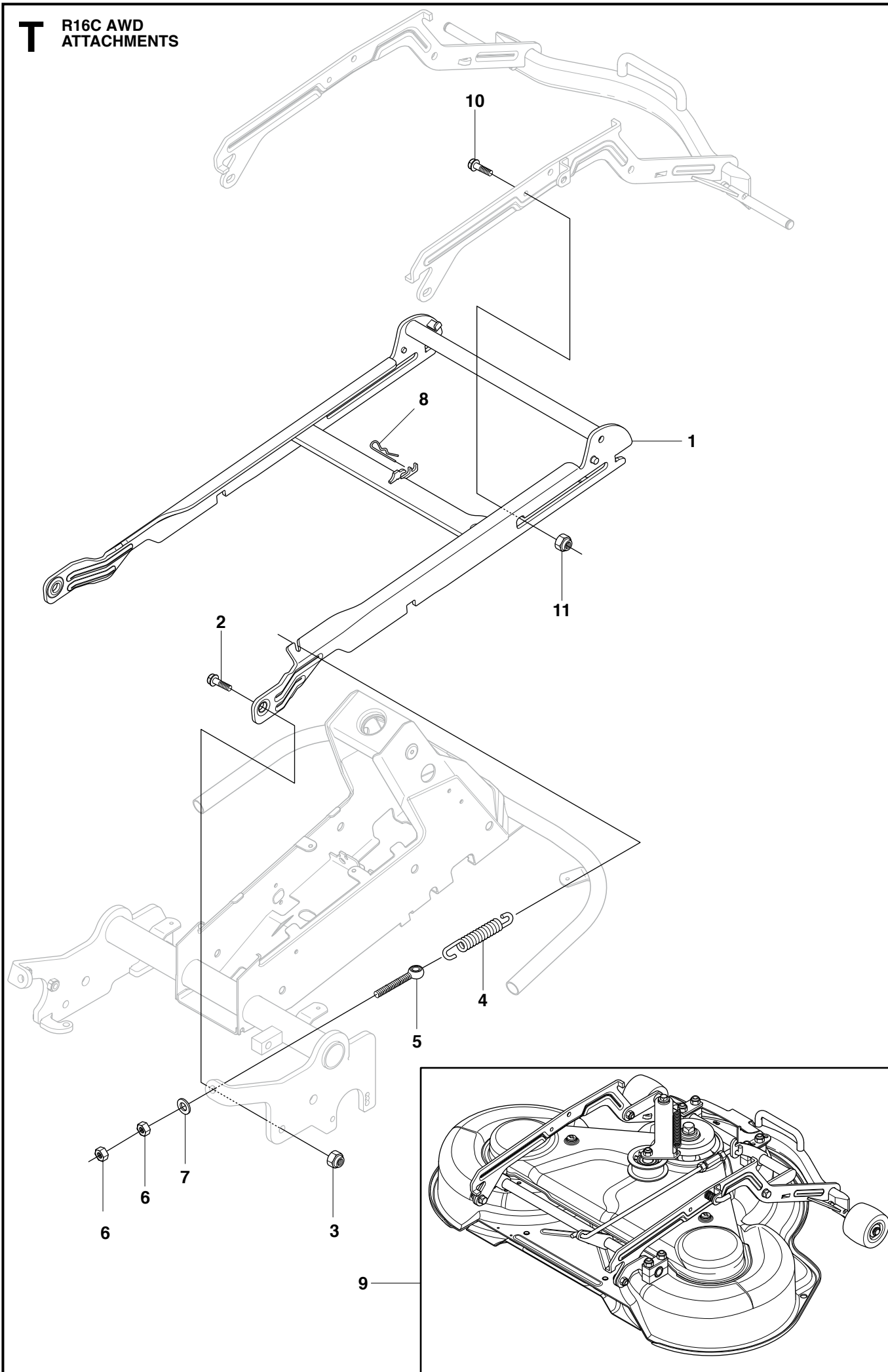
# S R16C AWD DECALS



Page S      R16C AWD      DECALS				
Position	Article	Quantity	Notes	Kit
1	544 43 86-01	1		
2	544 43 87-01	1		
3	544 43 88-01	1		
4	544 43 90-01	1		
5	544 43 92-01	1		
7	544 83 35-01	2		
8	544 83 36-01	1		
9	505 21 77-01	1		
10	544 39 11-02	1		
11	544 21 14-01	2		
12	504 81 33-01	1		
13	504 81 33-02	1		

5442571B-AB

# T R16C AWD ATTACHMENTS

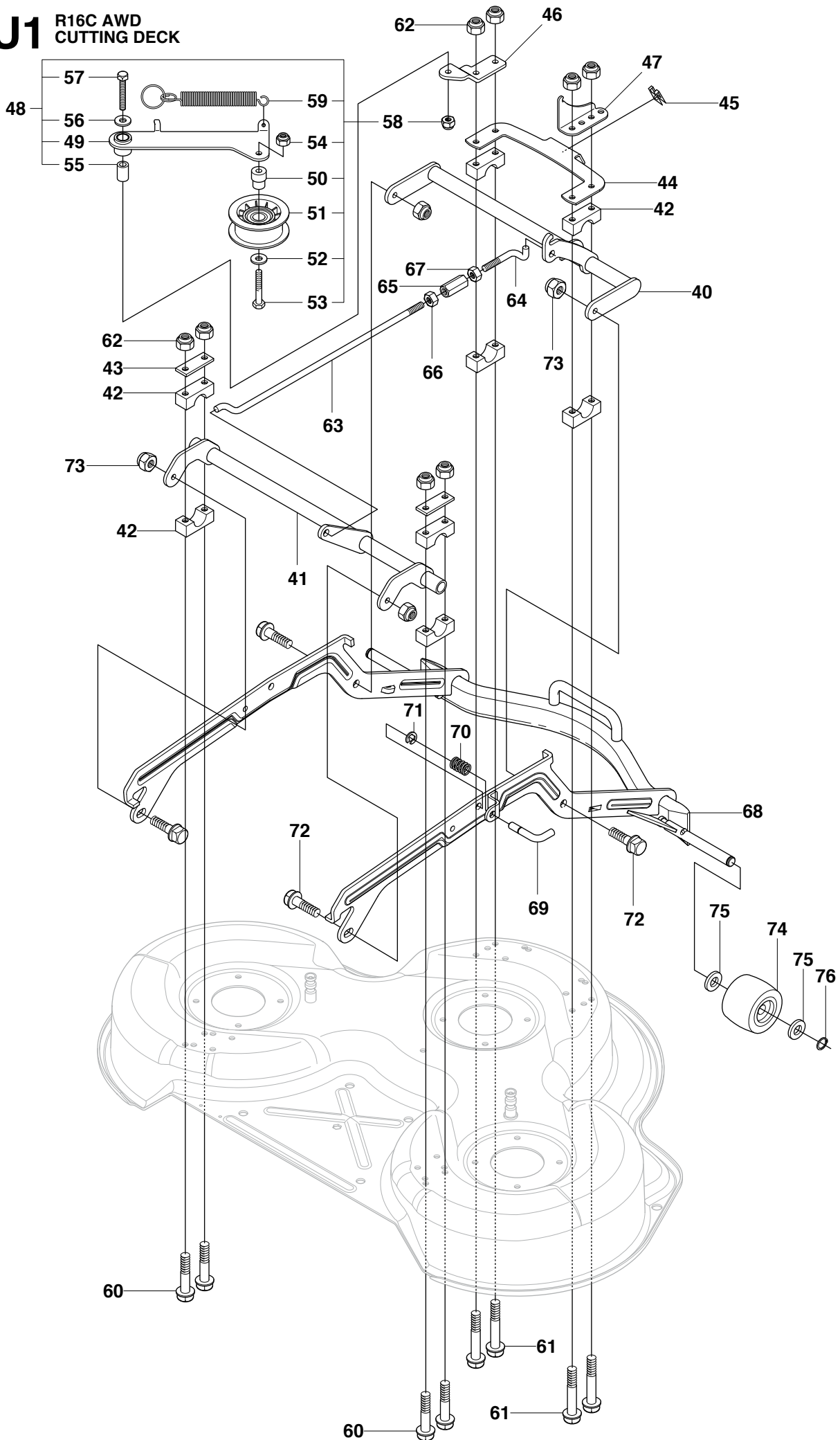




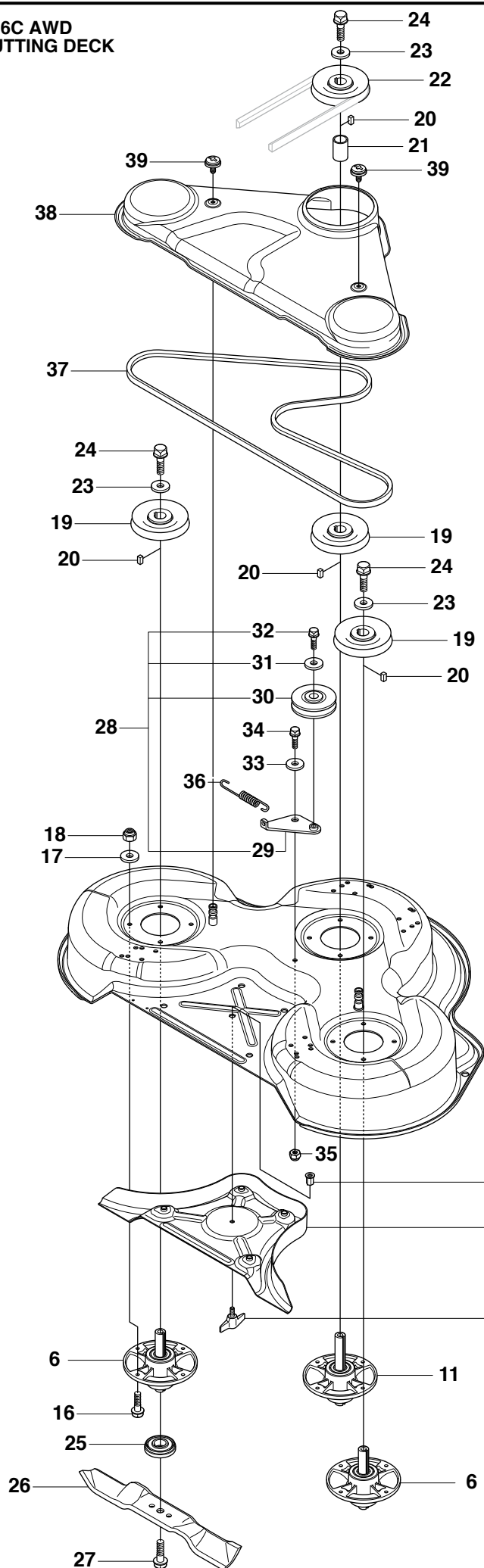
Page T		R16C AWD	ATTACHMENTS	
Position	Article	Quantity	Notes	Kit
1	544 40 11-01	1		
2	506 89 58-01	2		
3	732 25 22-01	2		
4	506 83 76-01	2		
5	506 83 77-01	2		
6	731 23 20-51	4		
7	734 11 72-01	2		
8	721 68 02-51	1		
9	544 43 79-03	1		
10	544 36 24-01	2		
11	732 21 18-01	2		

54425604-M

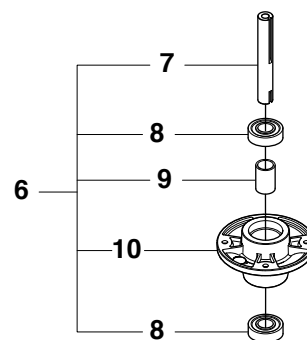
# U1 R16C AWD CUTTING DECK



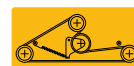
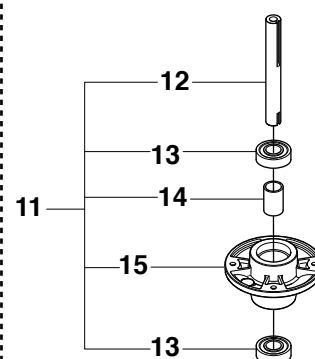
# U2 R16C AWD CUTTING DECK



Yttre.  
Outer.  
Exterieur.  
Äusser.  
Ulko.



Mitten.  
Centre.  
Centre.  
Zentrum.  
Keski.



77

**Combi 94**

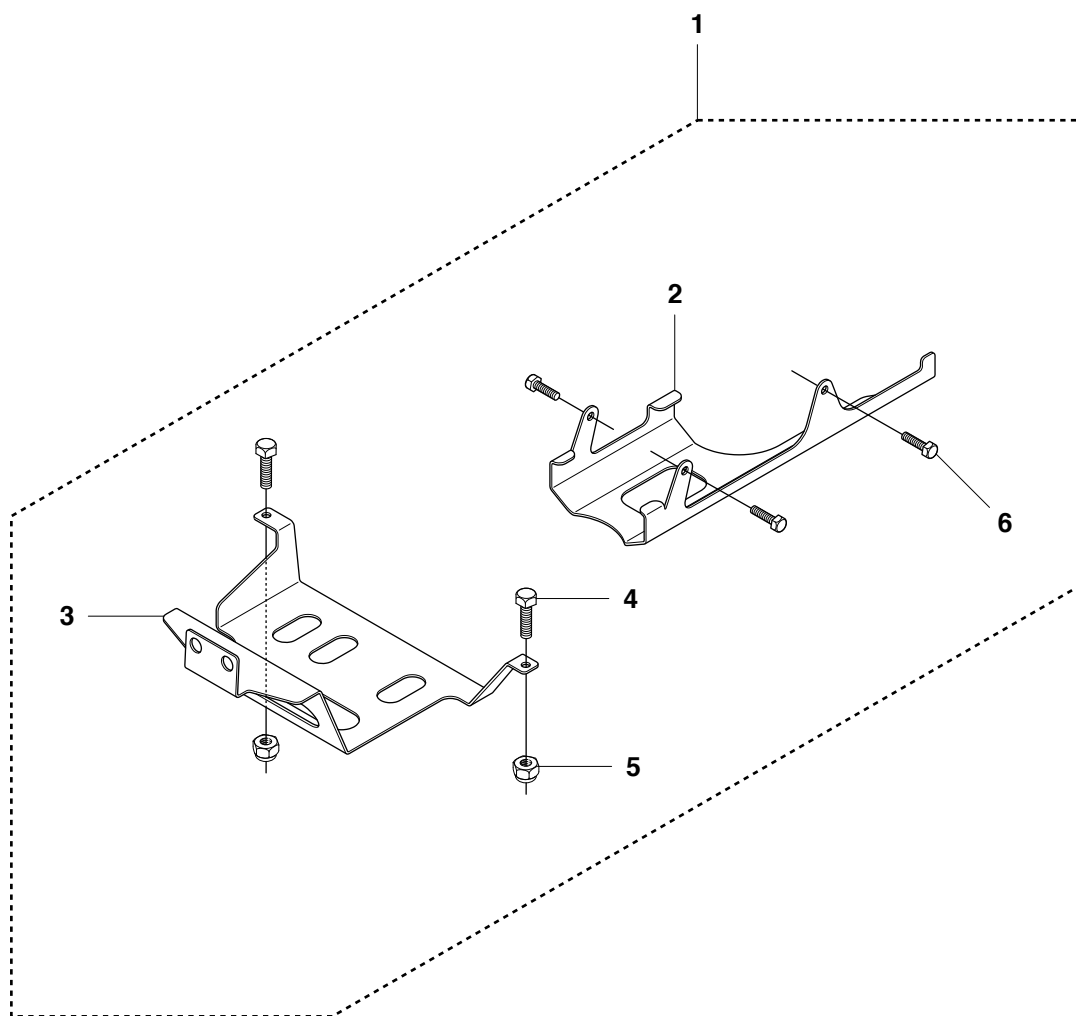
78

Page U     R16C AWD     CUTTING DECK				
Position	Article	Quantity	Notes	Kit
1	544 06 57-04	1		
2	544 06 55-06	1		1
3	506 91 62-01	1		1
4	544 06 58-01	1		1
5	544 06 61-01	1		1
6	544 06 59-01	2		
7	544 06 79-02	1		6
8	738 23 04-34	2		6
9	544 06 80-01	1		6
10	544 06 78-01	1		6
11	544 06 59-03	1		
12	544 06 79-01	1		11
13	738 23 04-34	2		11
14	544 06 80-01	1		11
15	544 06 78-01	1		11
16	535 42 38-01	12		
17	734 11 64-01	12		
18	732 21 18-01	12		
19	506 92 21-01	3		
20	506 53 35-01	4		
21	544 06 80-03	1		
22	506 77 86-01	1		
23	734 11 74-41	3		
24	506 67 54-02	3		
25	544 06 49-01	3		
26	505 54 45-01	3		
27	506 67 54-02	3		
28	506 79 73-01	1		
29	506 79 71-01	1		28
30	506 79 32-01	1		28
31	734 11 64-41	1		28
32	506 55 83-02	1		28
33	506 91 87-02	1		
34	725 24 51-71	1		
35	732 21 18-01	1		
36	506 53 31-01	1		
37	544 06 81-01	1		
38	522 82 19-01	1		
39	544 40 05-01	2		
40	544 22 07-01	1		
41	544 22 59-01	1		
42	506 86 96-01	8		
43	506 81 38-01	2		
44	544 37 91-01	1		
45	506 96 37-01	1		
46	544 40 51-01	1		
47	544 40 52-01	8		
48	544 83 56-01	8		
49	544 83 66-01	1		48
50	506 97 64-02	1		48
51	506 79 32-02	1		48
52	734 11 64-41	1		48
53	725 24 59-51	1		48
54	732 21 18-01	1		48
55	506 99 20-01	1		48

54425604-M

Page U      R16C AWD      CUTTING DECK				
Position	Article	Quantity	Notes	Kit
56	734 11 64-41	1		48
57	725 24 60-51	1		48
58	732 21 18-01	1		48
59	506 97 68-01	1		48
60	725 24 61-51	4		
61	725 24 62-51	4		
62	732 21 18-01	8		
63	544 22 69-01	1		
64	544 45 14-01	1		
65	544 45 15-01	1		
66	506 89 76-01	1		
67	731 23 20-51	1		
68	544 21 33-01	1		
69	544 21 39-01	1		
70	544 21 41-01	1		
71	735 31 13-20	1		
72	506 59 74-01	4		
73	732 21 18-01	4		
74	506 96 30-01	2		
75	535 46 41-01	4		
76	735 31 17-00	2		
77	506 78 97-01	1		
78	544 23 81-01	1		

54425604-M



## ACCESSORIES

Position	Article	Quantity	Notes	Kit
1	544 06 93-04	1		
2	504 04 62-01	1		1
3	544 14 33-01	1		1
4	725 24 63-71	2		1
5	732 21 18-01	2		1
6	725 24 49-61	3		1