

R53SV

Spare parts

Ersatzteile

Pièces détachées

Reserve onderdelen

Repuestos

Reservdelar

ILLUSTRATED PARTS LIST

MODEL NUMBER R53SV

PRODUCT NUMBER 961 41 01-35

MFG. ID. NUMBER 96141013502

This exploded view diagram illustrates the assembly of a lawnmower chassis. The central component is the main chassis plate (44), which serves as the base for all other parts. Key components shown include:

- Engine and Drive System:** A 2-stroke engine (24) is mounted on top of the chassis. It is connected to a drive shaft (7) and a pulley (10). The drive shaft is linked to a belt (11) and a pulley (12), which in turn drives the rear wheel (27) via a belt (26).
- Wheels and Axles:** The front wheel (27) is mounted on an axle (26) and is connected to a front suspension arm (30) and a front wheel hub (31). The rear wheel (27) is mounted on an axle (26) and is connected to a rear suspension arm (30) and a rear wheel hub (31).
- Chassis and Frame:** The main chassis plate (44) is reinforced with various brackets and plates, including a front plate (13), a rear plate (14), and a side plate (15). These are secured with numerous screws (e.g., 13, 14, 15, 16, 17, 18, 19, 20, 21, 22, 23, 24, 25, 26, 27, 28, 29, 30, 31, 32, 33, 34, 35, 36, 37, 38, 39, 40, 41, 42, 43, 44, 45, 46, 47, 48, 49, 50, 51, 52, 53, 54, 55, 56, 57, 58, 59, 60, 61, 62, 63, 64, 65, 66, 67, 68, 69, 70, 71, 72, 73, 74, 75, 76, 77, 78, 79, 80, 81, 82, 83, 84, 85, 86, 87, 88, 89, 90, 91, 92, 93, 94, 95, 96, 97, 98, 99, 100).
- Controls and Safety:** A control lever (59) is attached to the side of the chassis. A safety switch (64) is located near the front wheel. A rear handle (47) is attached to the back of the chassis via a bracket (48) and a screw (49).
- Fasteners and Hardware:** The diagram includes a large number of screws, bolts, nuts, washers, and spacers, each labeled with a number (e.g., 1, 2, 3, 4, 5, 6, 7, 8, 9, 10, 11, 12, 13, 14, 15, 16, 17, 18, 19, 20, 21, 22, 23, 24, 25, 26, 27, 28, 29, 30, 31, 32, 33, 34, 35, 36, 37, 38, 39, 40, 41, 42, 43, 44, 45, 46, 47, 48, 49, 50, 51, 52, 53, 54, 55, 56, 57, 58, 59, 60, 61, 62, 63, 64, 65, 66, 67, 68, 69, 70, 71, 72, 73, 74, 75, 76, 77, 78, 79, 80, 81, 82, 83, 84, 85, 86, 87, 88, 89, 90, 91, 92, 93, 94, 95, 96, 97, 98, 99, 100).

The diagram uses dashed lines to indicate the assembly path and alignment of the components.

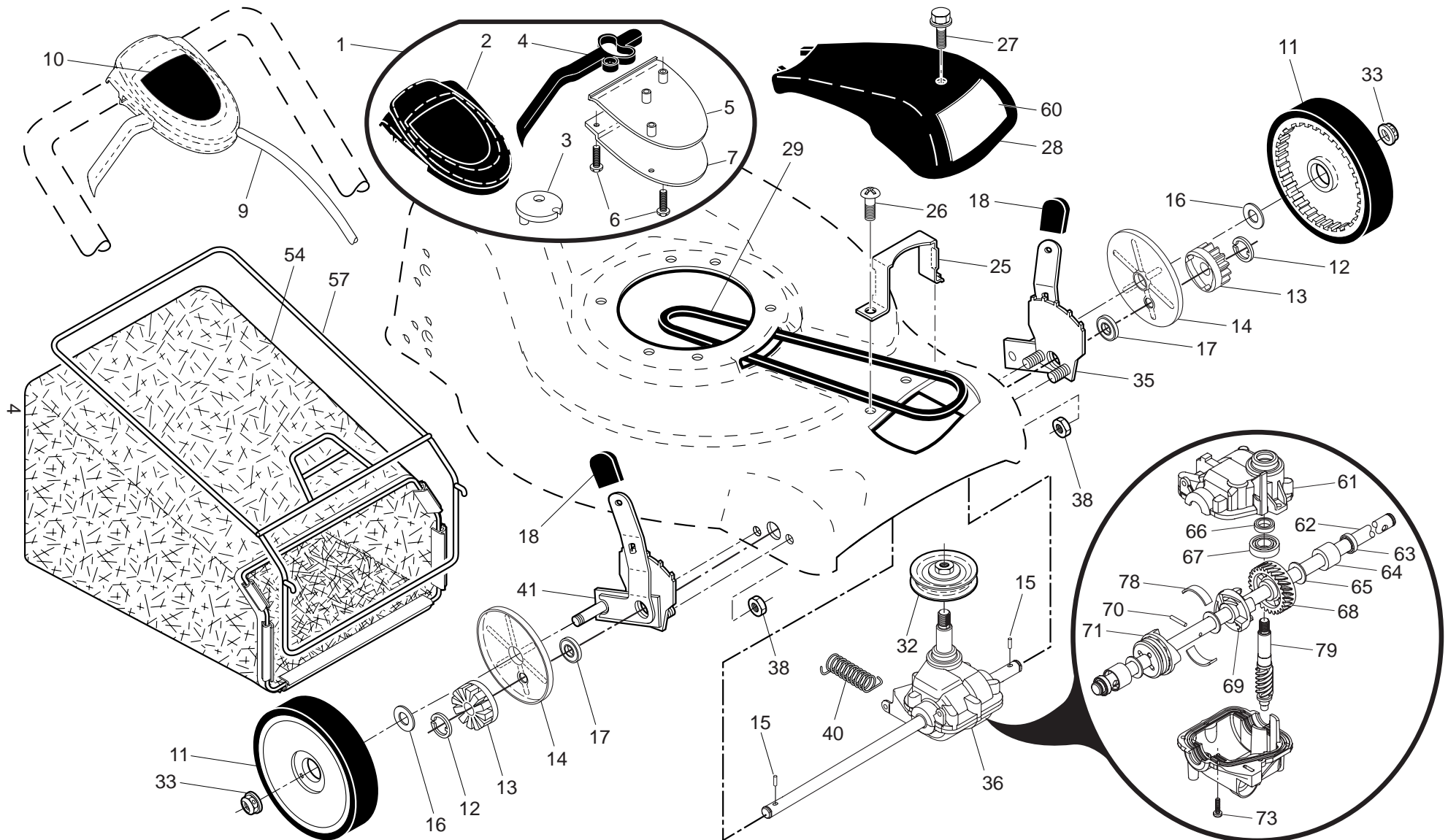
ROTARY LAWN MOWER - - MODEL NUMBER R53SV (96141013502) PRODUCT NUMBER 961 41 01-35

KEY NO.	PART NO.	DESCRIPTION
1	532 19 64-03	Upper Handle (Includes Foam Grip)
2	532 15 34-18	Lower Handle
3	532 19 70-19	Control Bar
4	532 18 35-67	Engine Zone Control Cable
5	532 19 15-74	Handle Bolt
6	532 19 19-38	Handle Knob
7	532 05 17-93	Hairpin Cotter
8	532 06 64-26	Wire Tie
9	532 40 69-85	Rear Door Assembly
10	532 12 84-15	Pop Rivet
11	532 40 65-73	Support Bracket, LH
12	532 40 65-74	Support Bracket, RH
13	817 06 04-10	Screw 1/4-20 x 5/8
14	532 19 60-37	Handle Bracket Assembly, LH
15	532 19 60-36	Handle Bracket Assembly, RH
16	532 40 54-17	Spring, Rear Door, LH
17	532 40 54-18	Spring, Rear Door, RH
18	532 13 20-04	Locknut, Hex 1/4-20
19	532 19 47-88	Rope Guide
20	532 41 35-43	Foot Guard, C.E.
21	817 49 04-16	Screw, Self-Tapping, Hex Head 1/4-20 x 1/2
24	- - -	Engine, Honda, Model Number GCV160 (order parts from engine manufacturer)
25	532 15 04-06	Hex Head Thread Rolling Screw 3/8-16 x 1-1/8
26	532 40 91-49	Hex Flange Nut
27	532 40 25-95	Wheel & Tire Assembly, Rear, 12"
28	532 40 16-38	Shoulder Bolt 5/16-18 x .33
29	532 12 50-78	Washer, Special, Engine, Zinc-Plated
30	532 41 31-41	Axle Arm Assembly, Rear
31	532 70 10-37	Selector Knob
32	532 40 98-89	Selector Spring

KEY NO.	PART NO.	DESCRIPTION
33	873 80 05-00	Nut, Hex 5/16-18
34	532 40 16-30	Washer, Curved, Cylindrical
36	532 18 41-93	Bolt
37	874 78 05-12	Thread Cutting Screw w/Sems 5/16-18 x 3/4
38	532 40 16-29	Spacer
39	532 15 53-77	Nut, Hex, Flanged 5/16-18
40	532 19 09-39	Mounting Bracket, Debris Shield
41	532 19 23-25	Screw, Debris Shield
43	532 40 58-44	Debris Shield
44	532 40 80-16	Lawn Mower Housing (Includes Key Numbers 10, 11, 12 and 45)
45	532 18 21-66	Danger Decal
46	532 19 77-52	Blade Adapter / Pulley
47	532 19 93-77	Blade 21"
48	532 85 10-74	Hardened Washer
49	532 85 02-63	Helical Washer 3/8-24 x 1-3/8 Grade 8
50	532 85 10-84	Hex Head Machine Screw 3/8-24 x 1-3/8 Grade 8
57	532 12 51-62	Upstop Bracket
59	532 18 55-82	Discharge Deflector
60	532 17 57-35	Hinge Bracket Assembly
61	532 19 30-00	Spring, Hinge
62	532 17 56-50	Rod, Hinge
63	873 80 04-00	Locknut, Hex 1/4-20
64	532 18 55-76	Mulcher Door
65	532 19 74-80	O-Ring
66	532 08 83-48	Washer, Flat
69	532 18 27-48	Grip, Foam
96	532 19 79-91	Clip, Cable
- -	532 18 21-91	Decal, Warning (not shown)
- -	532 41 13-45	Operator's Manual, European
- -	532 41 13-46	Operator's Manual, Scandinavian
- -	532 41 13-42	Operator's Manual, Baltic

NOTE: All component dimensions given in U.S. inches. 1 inch = 25.4 mm. **IMPORTANT:** Use only Original Equipment Manufacturer (O.E.M.) replacement parts. Failure to do so could be hazardous, damage your lawn mower and void your warranty.

ROTARY LAWN MOWER - - MODEL NUMBER R53SV (96141013502) PRODUCT NUMBER 961 41 01-35



ROTARY LAWN MOWER - - MODEL NUMBER R53SV (96141013502) PRODUCT NUMBER 961 41 01-35

KEY NO.	PART NO.	DESCRIPTION
1	532 40 73-16	Drive Control Assembly
2	532 41 16-73	Cover, Drive Control, Upper
3	532 40 62-62	Pulley
4	532 19 00-39	Lever, Drive Control
5	532 41 16-64	Cover, Drive Control, Lower
6	532 18 16-98	Screw
7	532 40 07-23	Mounting Bracket, Drive Control
9	532 40 62-59	Cable, Drive Control
11	532 40 25-67	Wheel & Tire Assembly
12	812 00 00-58	E-Ring
13	532 40 38-49	Pinion
14	532 18 94-03	Dust Cover
15	532 40 48-45	Pawl, Drive
16	532 06 77-25	Washer 1/2 x 1-1/2 x .134
17	532 40 48-31	Bearing, Wheel Adjuster
18	532 70 10-37	Selector Knob
25	532 41 16-63	Belt Keeper
26	532 16 34-09	Screw, Hi-Lo Thread #12 x 5/8
27	532 17 52-62	Pan Head Tapping Screw #10-24 x 2-3/4
28	532 18 55-79	Cover, Drive
29	532 19 41-49	V-Belt
32	532 19 40-18	Pulley, Drive
33	532 40 91-48	Locknut, Hex
35	532 40 88-60	Kit, Wheel Adjuster, LH (Includes Knob and Bearing)

KEY NO.	PART NO.	DESCRIPTION
36	532 40 48-33	Gear Case Assembly, Complete
38	873 80 04-00	Locknut 1/4-20
40	532 40 65-58	Spring
41	532 40 88-59	Kit, Wheel Adjuster, RH (Includes Knob and Bearing)
54	532 40 19-03	Grassbag Assembly
57	532 40 18-02	Frame, Grassbag
60	532 19 35-57	Decal, Drive Cover
61	532 41 07-26	Case, Upper
62	532 41 09-49	Shaft, Output
63	532 18 35-08	Seal, Output Shaft
64	532 18 35-11	Bushing
65	532 18 35-09	Washer
66	532 18 35-14	Seal, Worm Shaft
67	532 18 35-06	Bearing, Ball
68	532 41 07-29	Gear, 28 Teeth
69	532 41 07-32	Fixed Dog Clutch
70	532 41 07-33	Pin
71	532 41 07-30	Movable Dog Clutch
73	532 18 35-13	Screw, Case
74	532 41 07-34	Case, Lower
78	532 41 07-31	Spring, Leaf
79	532 41 07-27	Shaft, Worm

NOTE: All component dimensions given in U.S. inches. 1 inch = 25.4 mm. **IMPORTANT:** Use only Original Equipment Manufacturer (O.E.M.) replacement parts. Failure to do so could be hazardous, damage your lawn mower and void your warranty.