

Rider 13 AWD

Spare parts

Ersatzteile

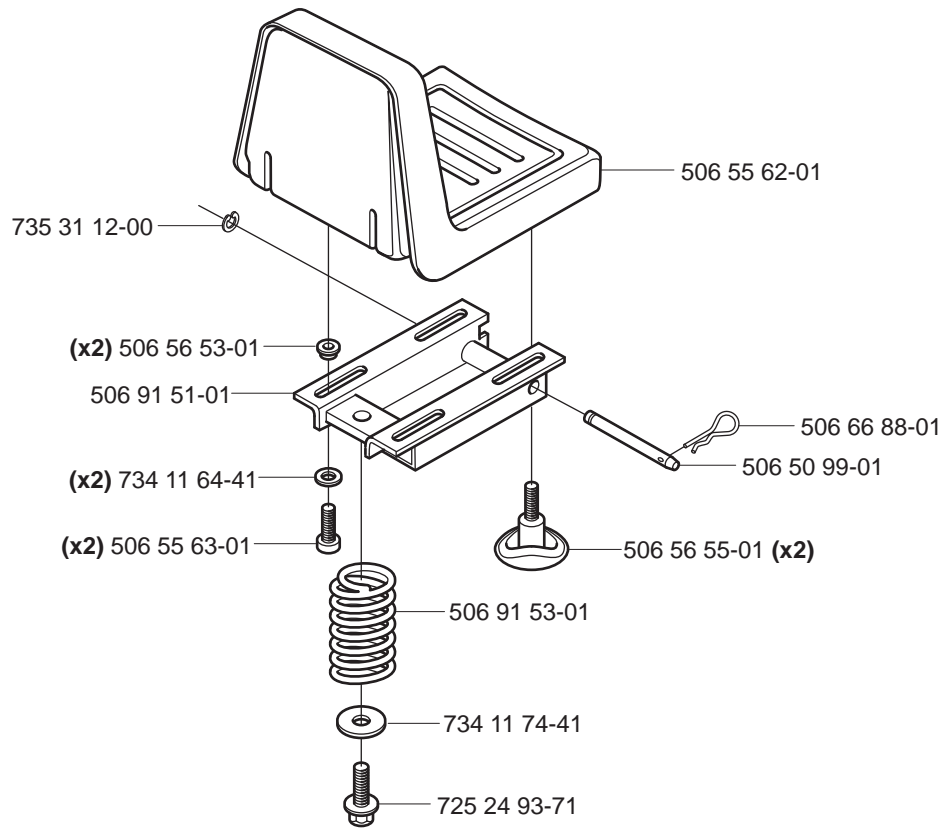
Pièces détachées

Reserve onderdelen

Repuestos

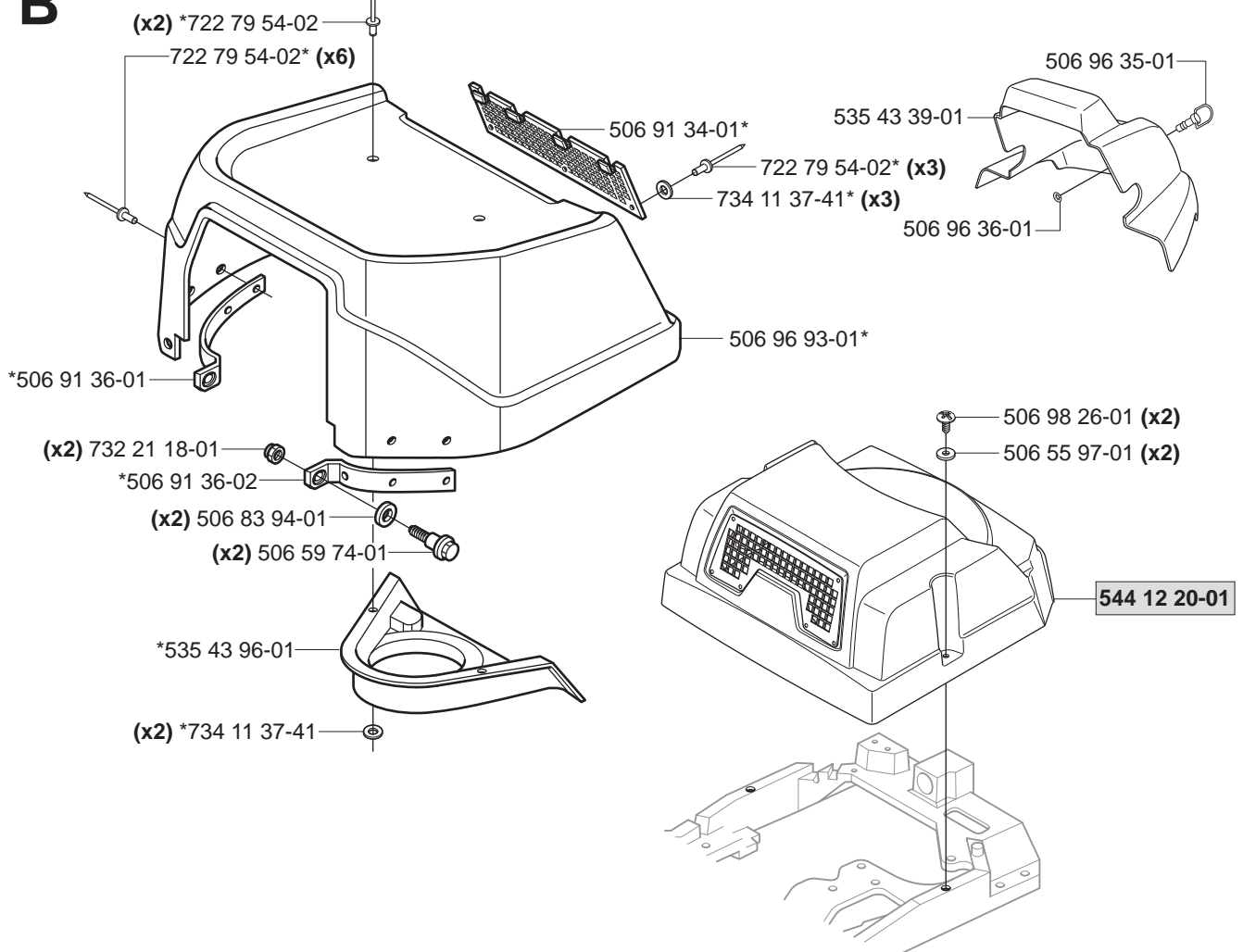
Reservdelar

A



B

*compl 506 98 46-05



xxx xx xx-xx = New part,
Neues teil,
Nouvelle piece,
Nueva pieza,
Ny detalj

C

(x4) 506 98 26-01
(x4) 506 55 97-01

535 46 61-01

535 46 61-03

535 46 60-01

535 46 60-03

(x4) 506 57 01-03

506 59 46-01

506 67 33-01

506 76 96-01

535 41 56-19

506 91 37-01

506 91 38-01

506 94 67-07

(x2) 535 46 97-01

506 76 97-03

(x4) 725 24 49-51

734 11 56-01 (x2)

732 21 16-01 (x2)

(x2) 732 21 18-01

(x2) 725 23 70-51

(x2) 734 11 56-01

506 76 98-03

535 41 56-19 (x2)

506 89 20-01

535 41 56-19

506 96 95-01

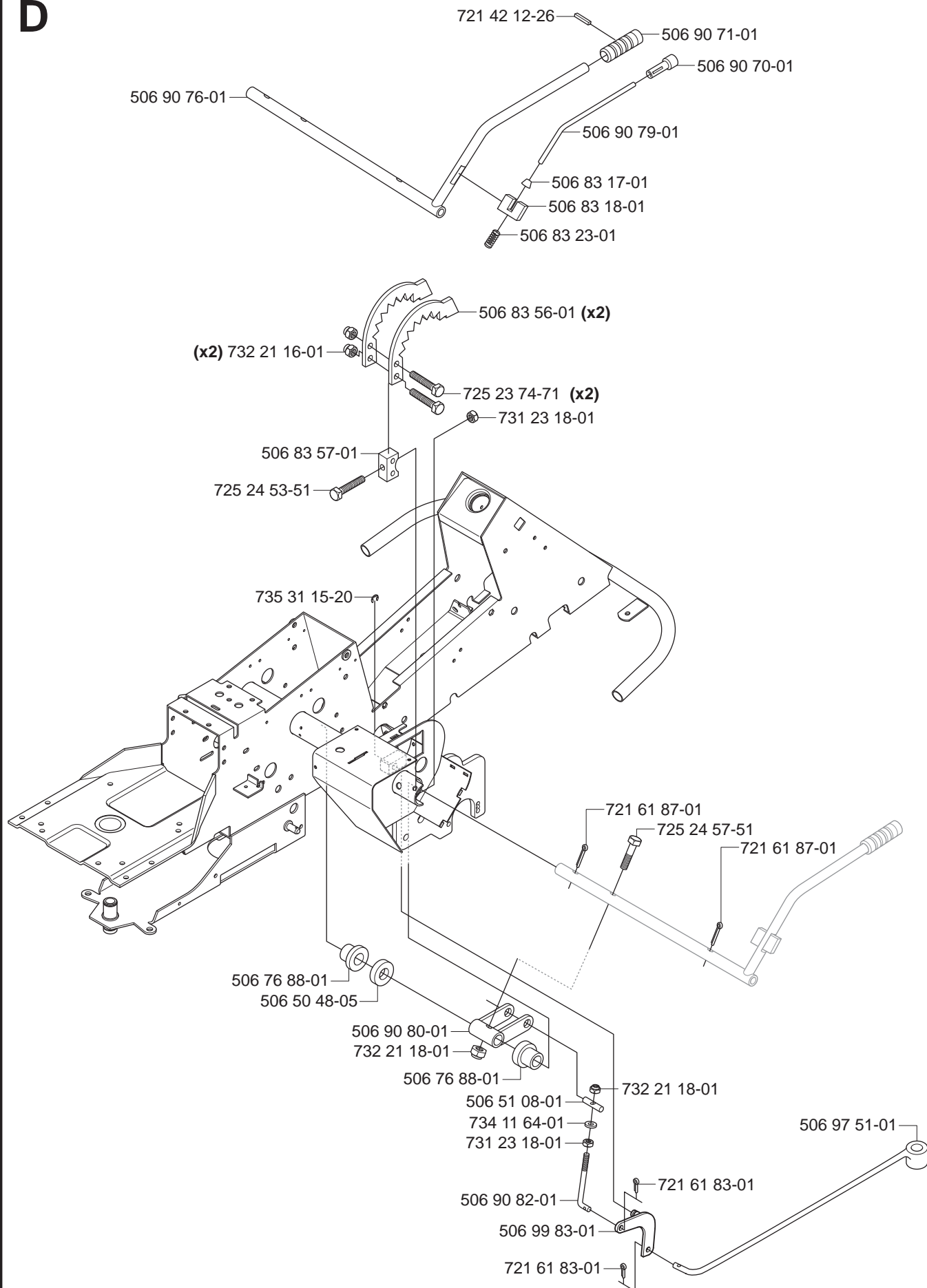
(x2) 734 11 64-01

(x2) 732 21 18-01

New part,
Neues teil,
Nouvelle piece,
Nueva pieza,
Ny detalj

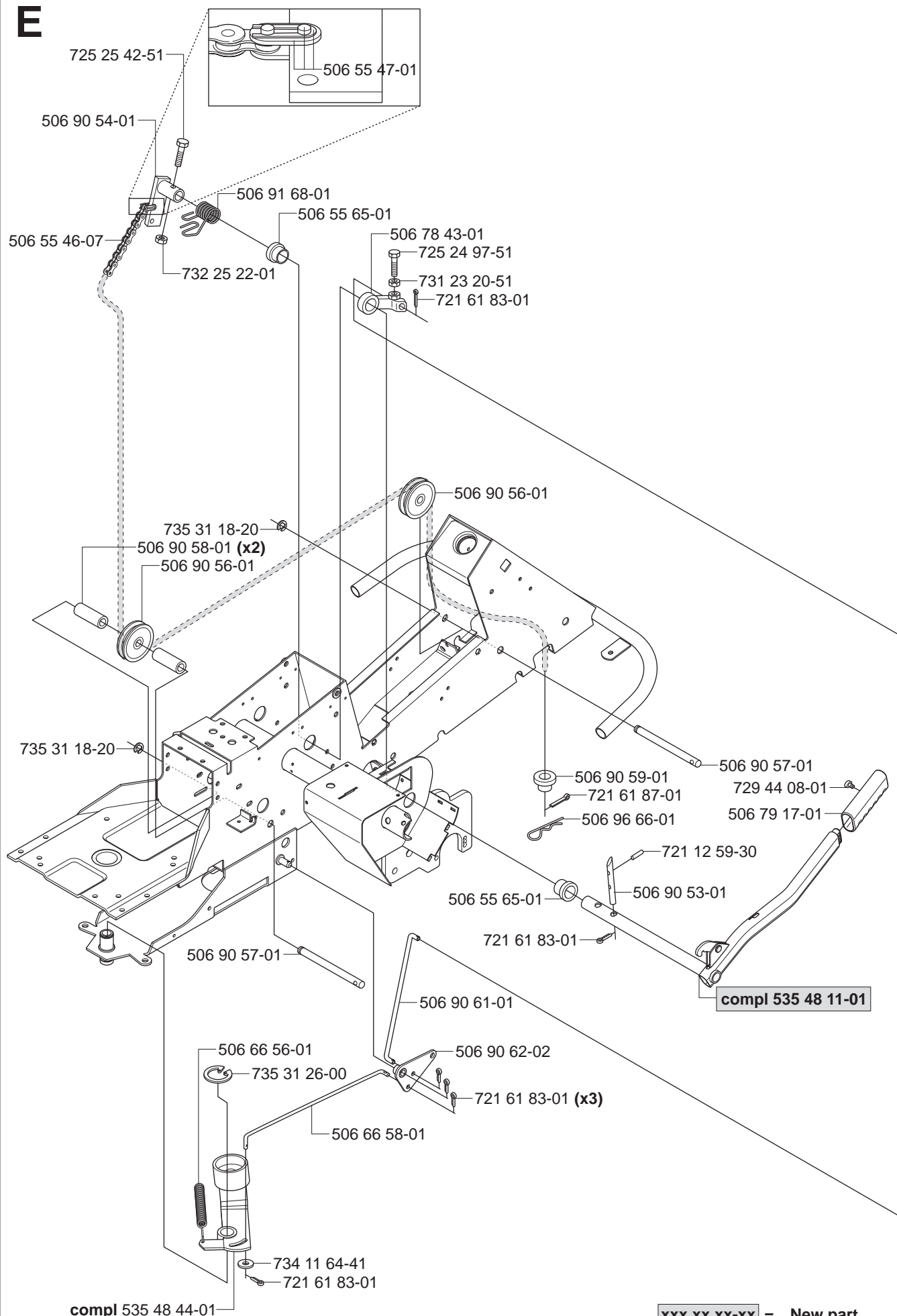
xxx xx xx-xx =

D



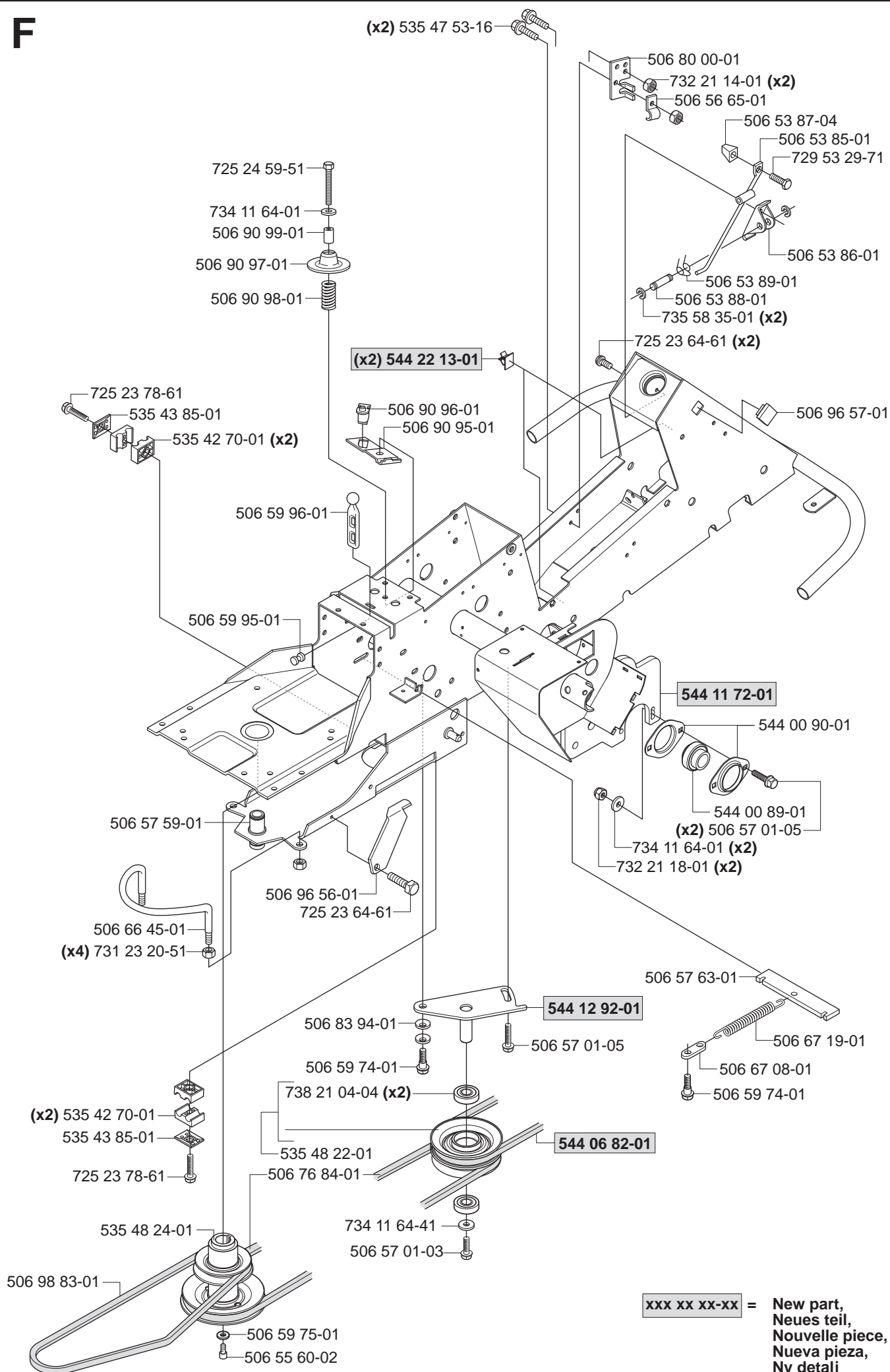
xxx xx xx-xx = New part,
Neues teil,
Nouvelle piece,
Nueva pieza,
Ny detalj

E

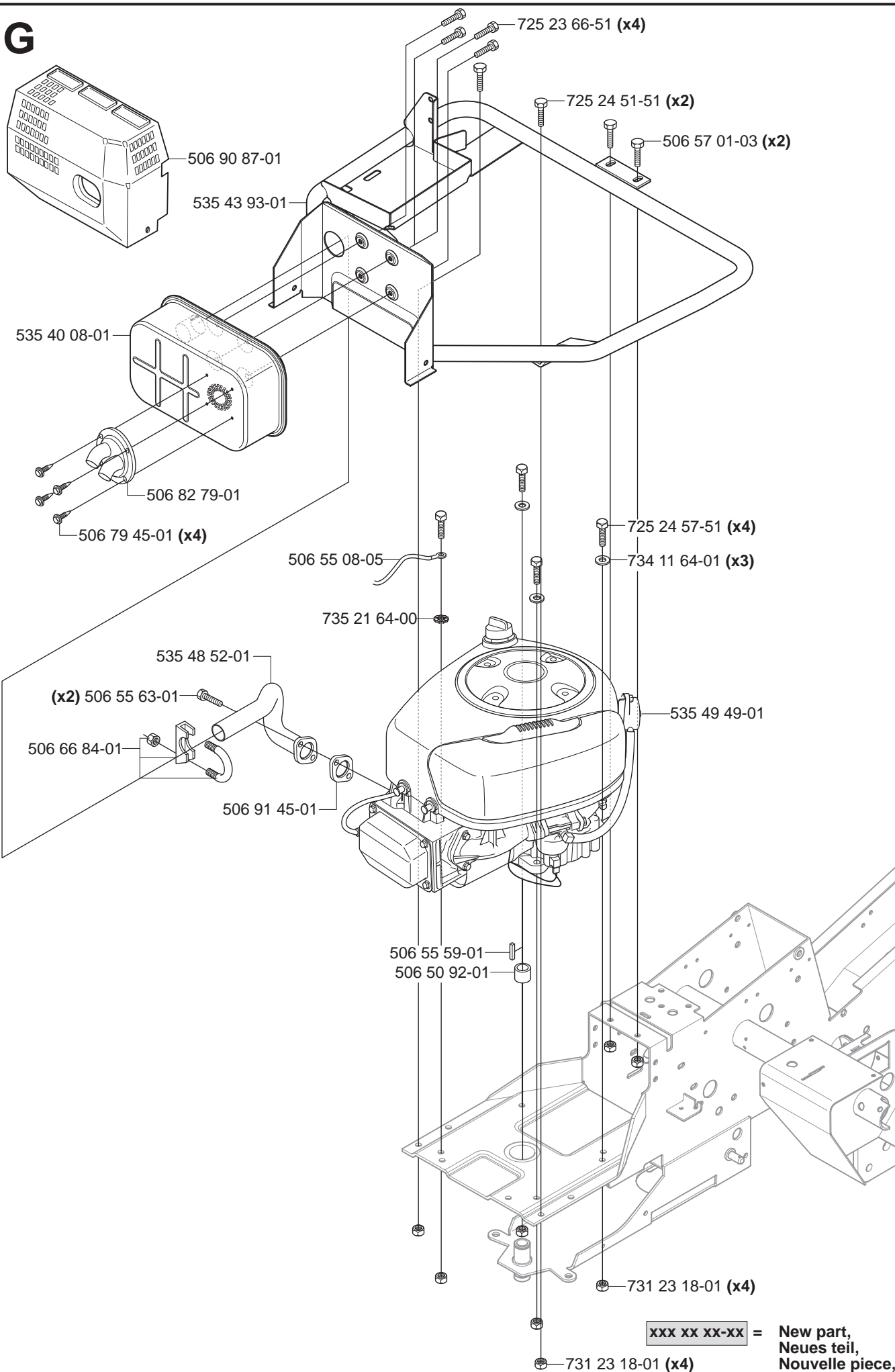


xxx xx xx-xx = New part,
Neues teil,
Nouvelle piece,
Nueva pieza,
Ny detalj

F

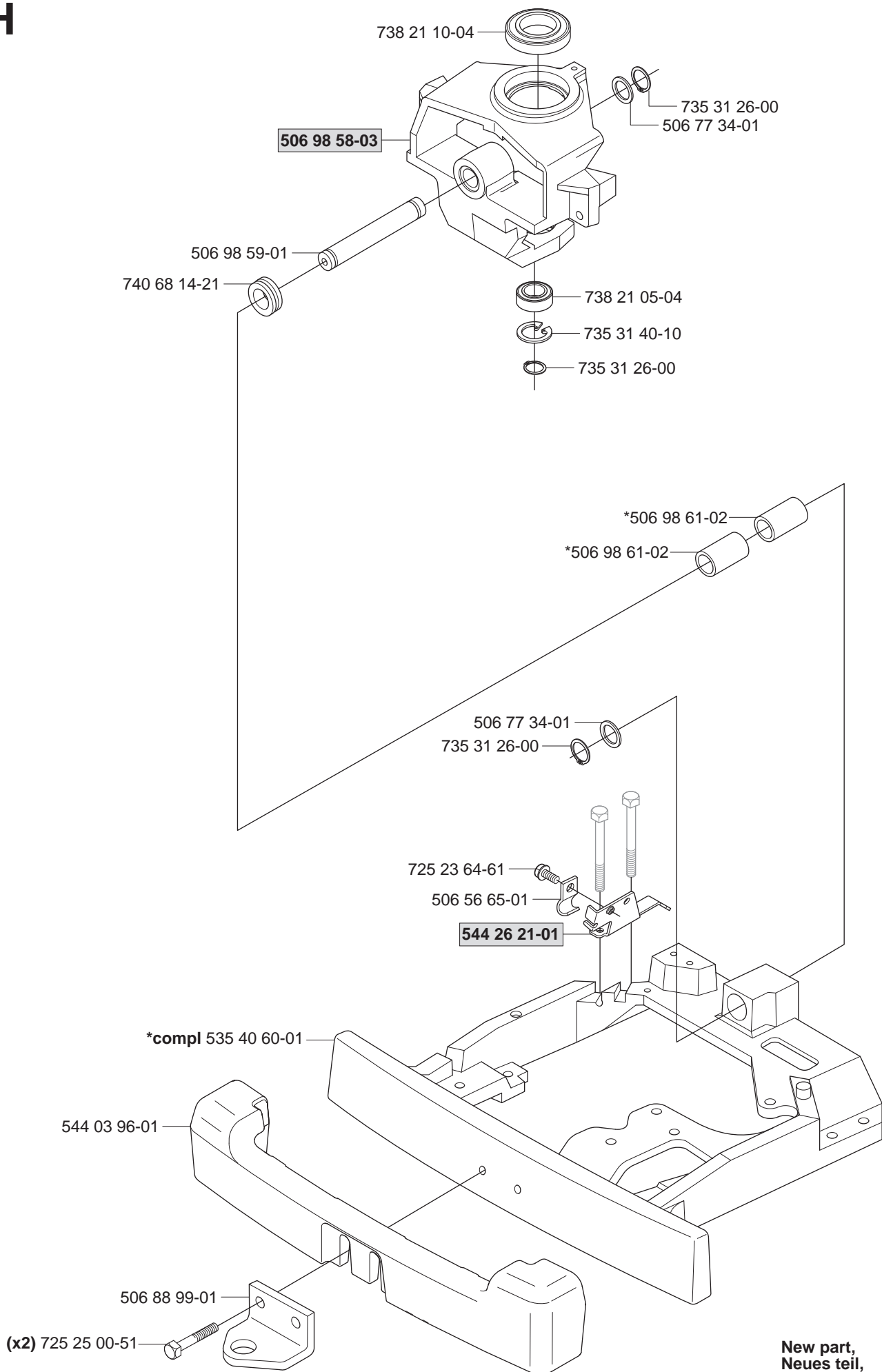


G



xxx xx xx-xx = New part,
Neues teil,
Nouvelle piece,
Nueva pieza,
Ny detalj

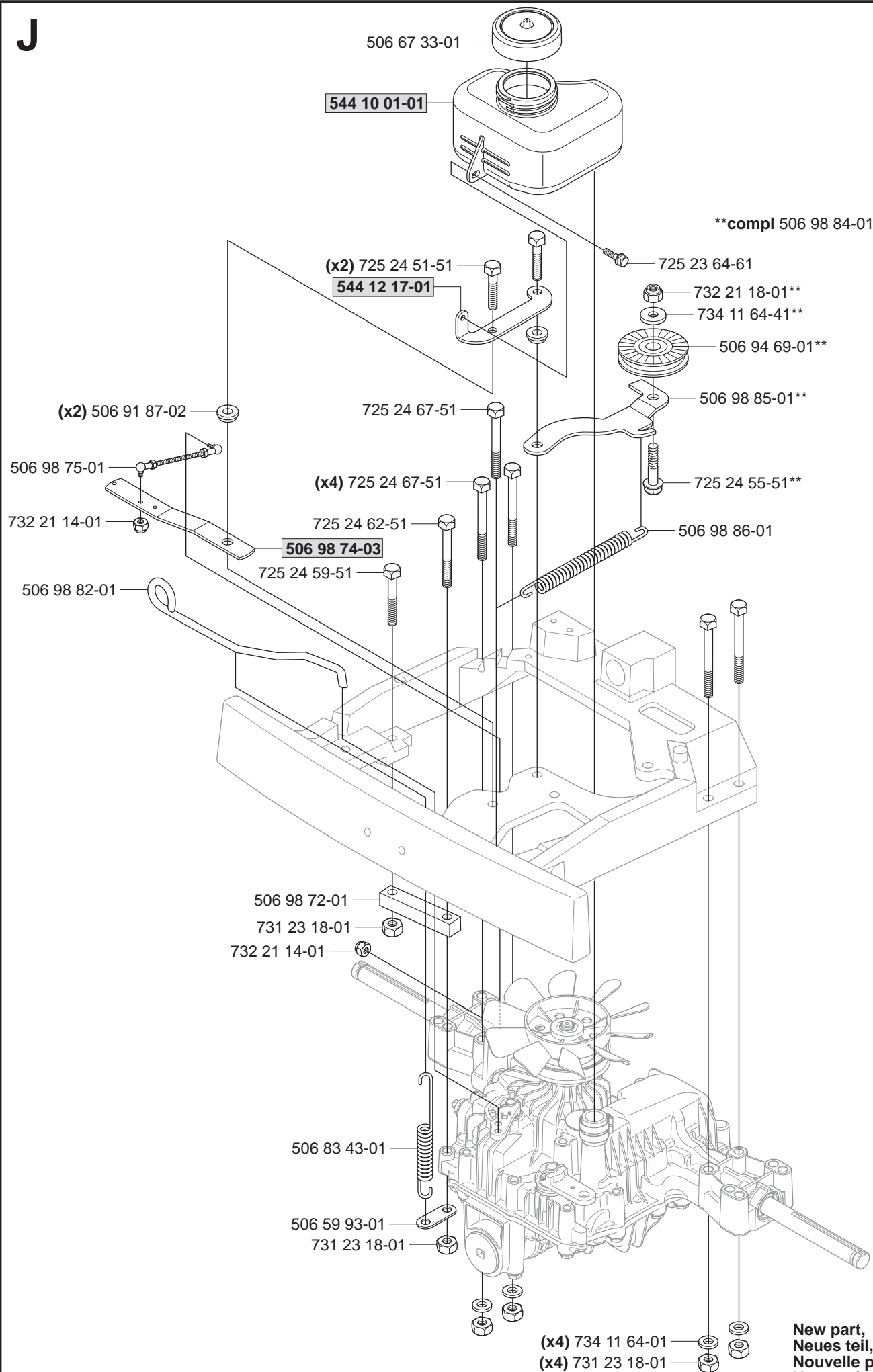
H



New part,
Neues teil,
Nouvelle piece,
Nueva pieza,
Ny detalj

xxx xx xx-xx =

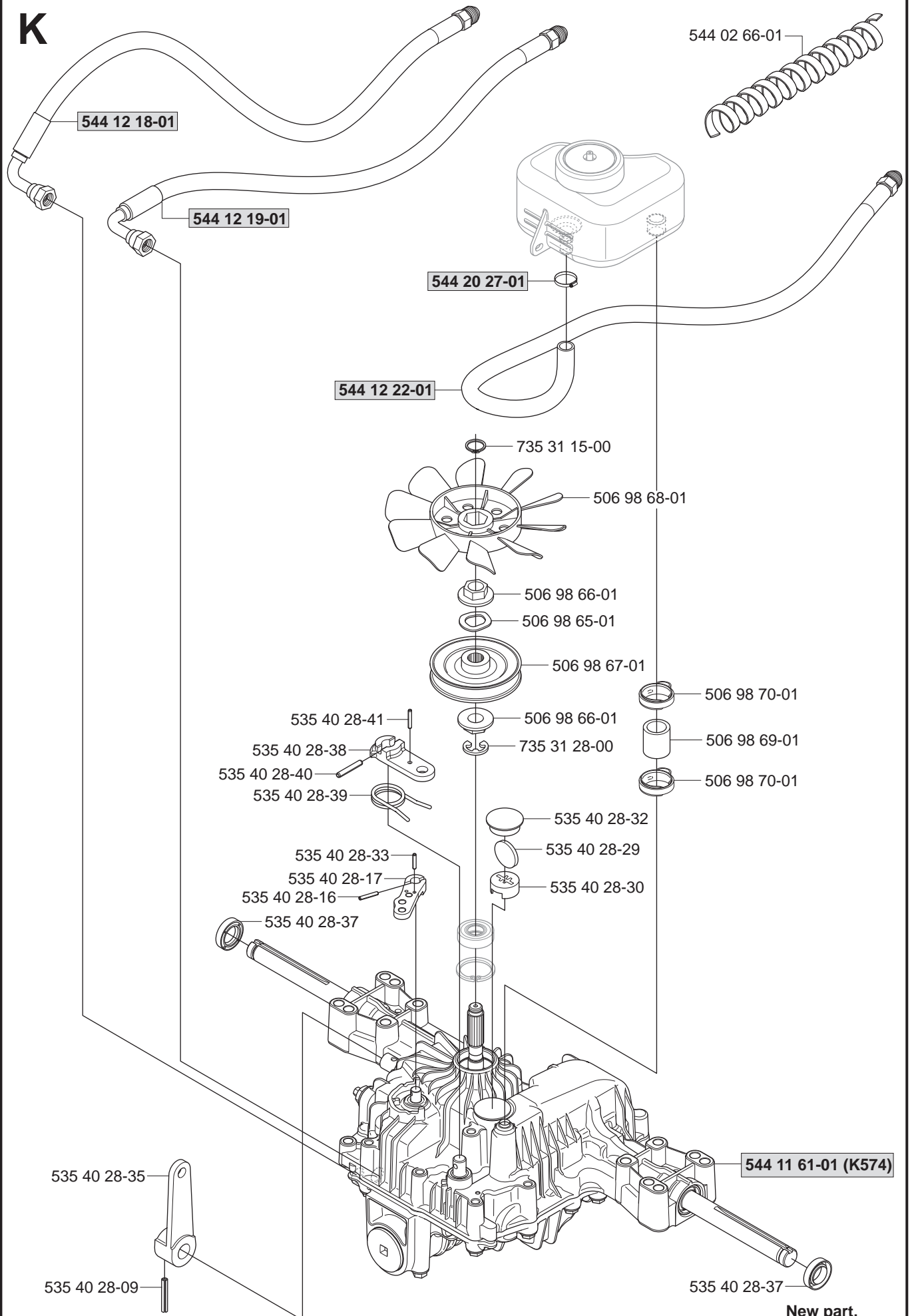
J



New part,
Neues teil,
Nouvelle piece,
Nueva pieza,
Ny detalj

xxx xx xx-xx =

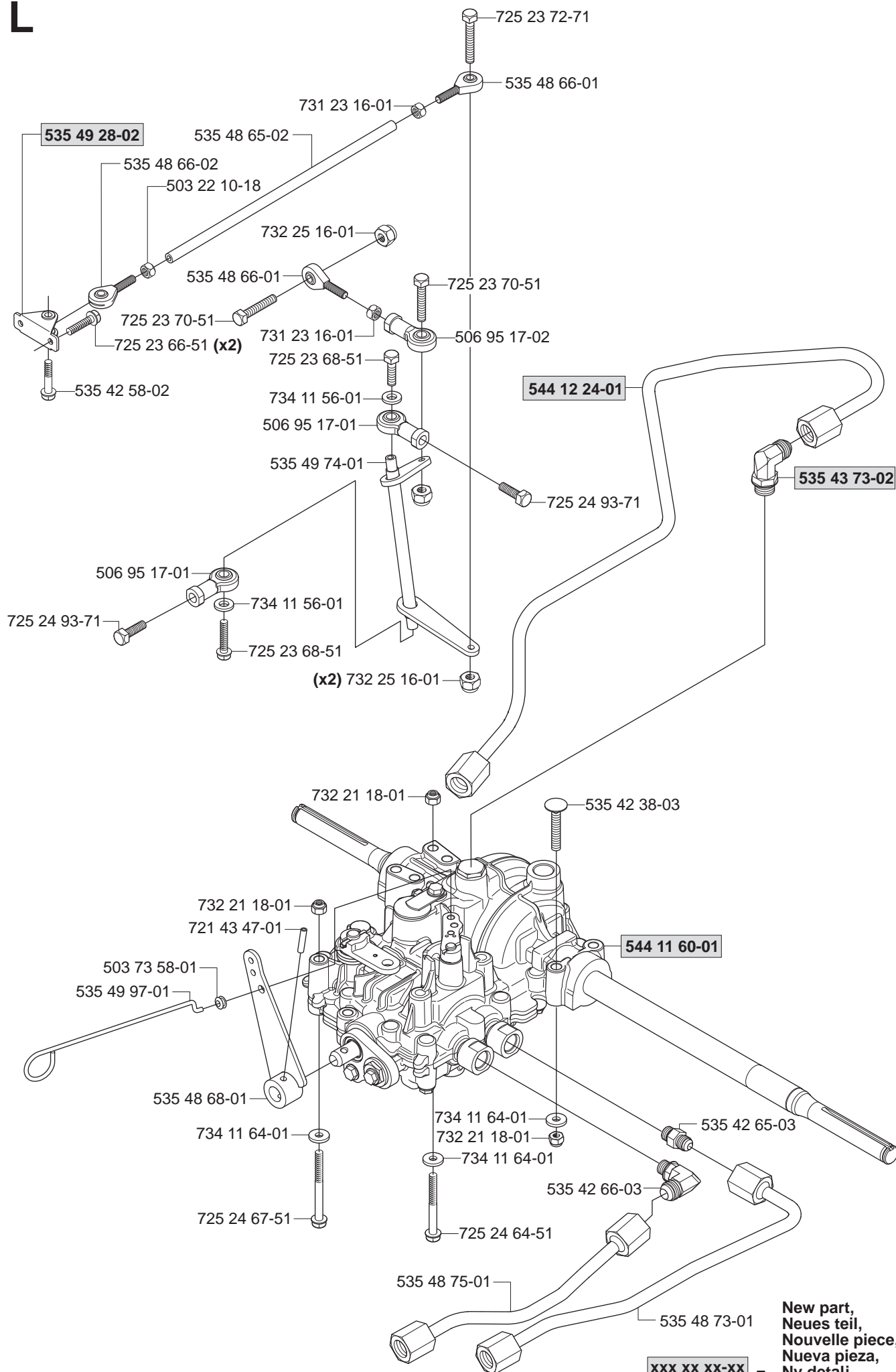
K



New part,
Neues teil,
Nouvelle piece,
Nueva pieza,
Ny detalj

xxx xx xx-xx =

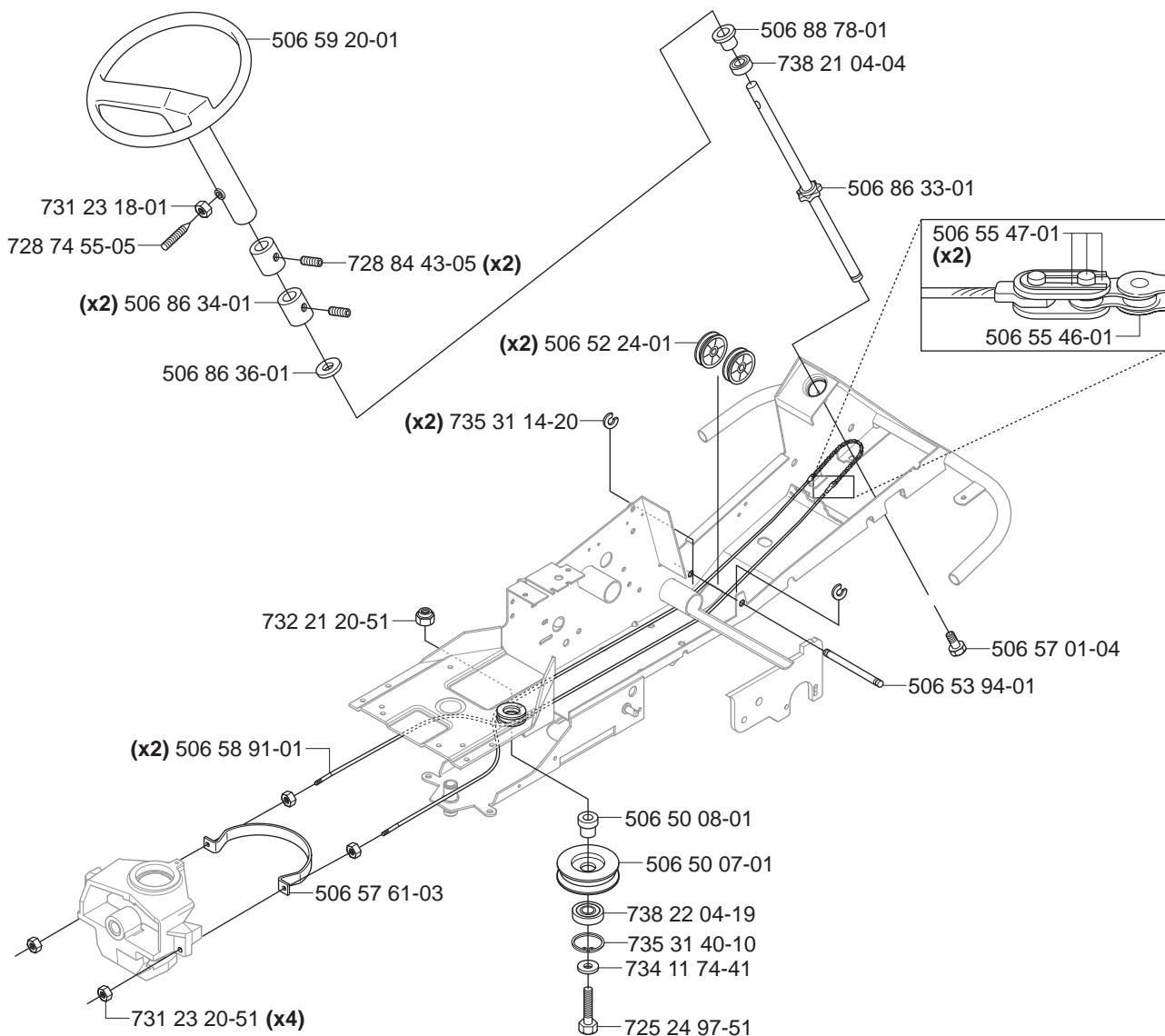
L



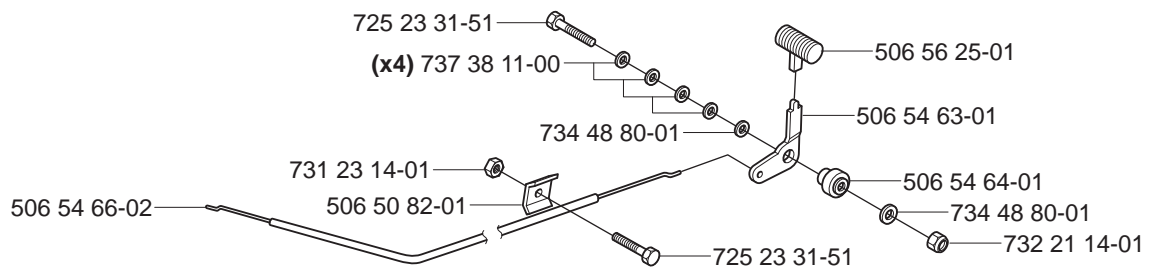
New part,
Neues teil,
Nouvelle piece,
Nueva pieza,
Ny detalj

xxx xx xx-xx =

M

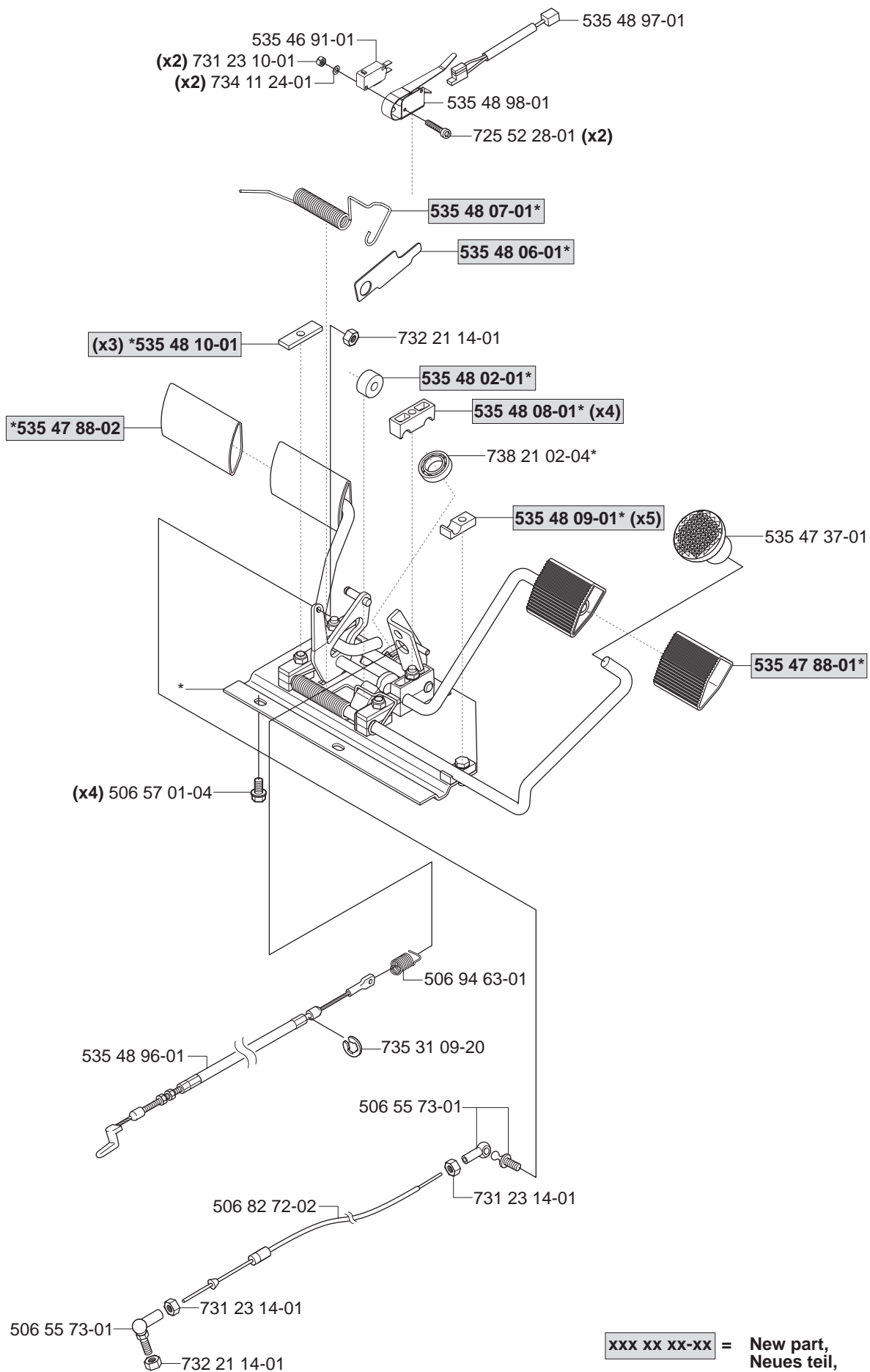


N



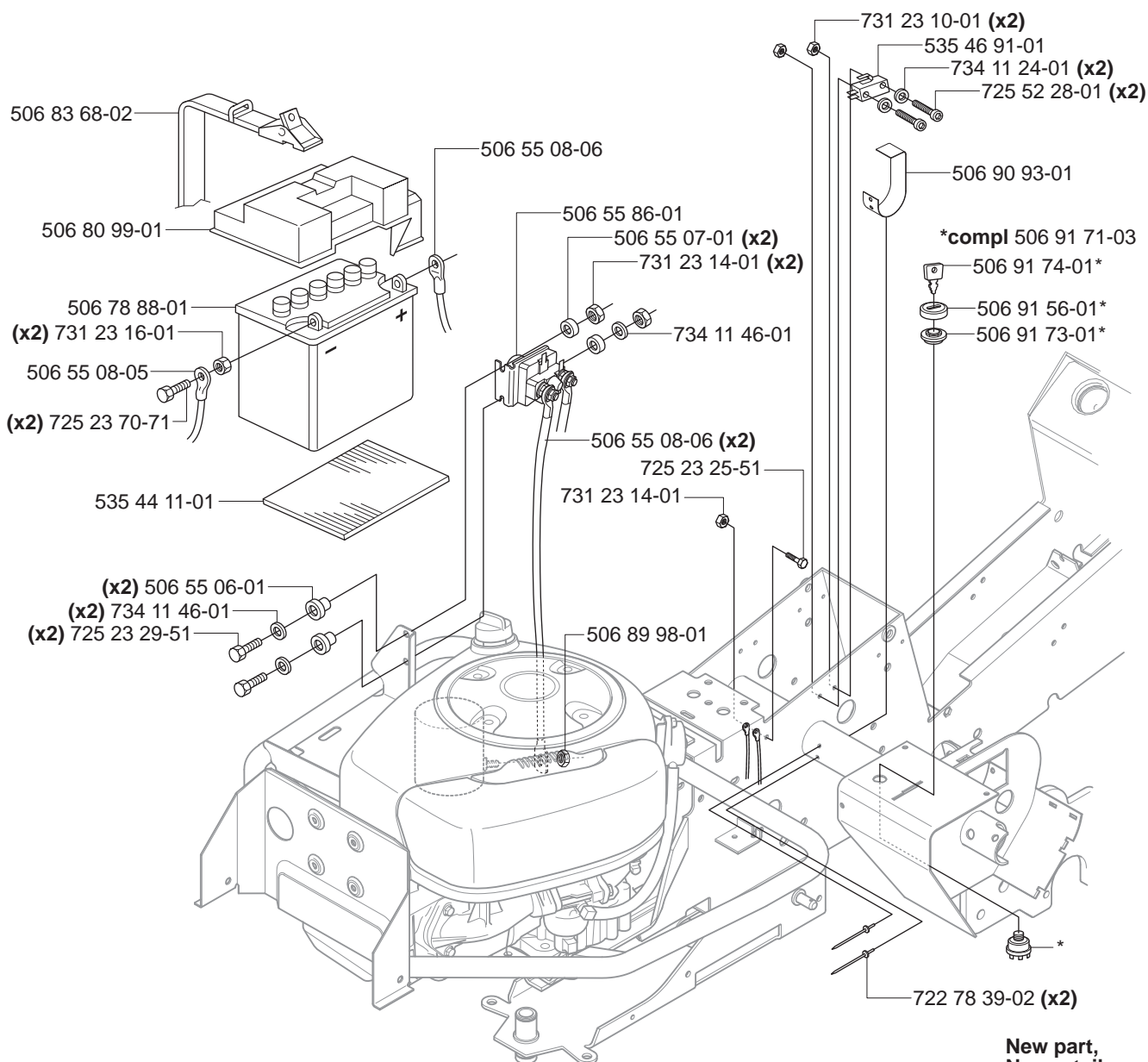
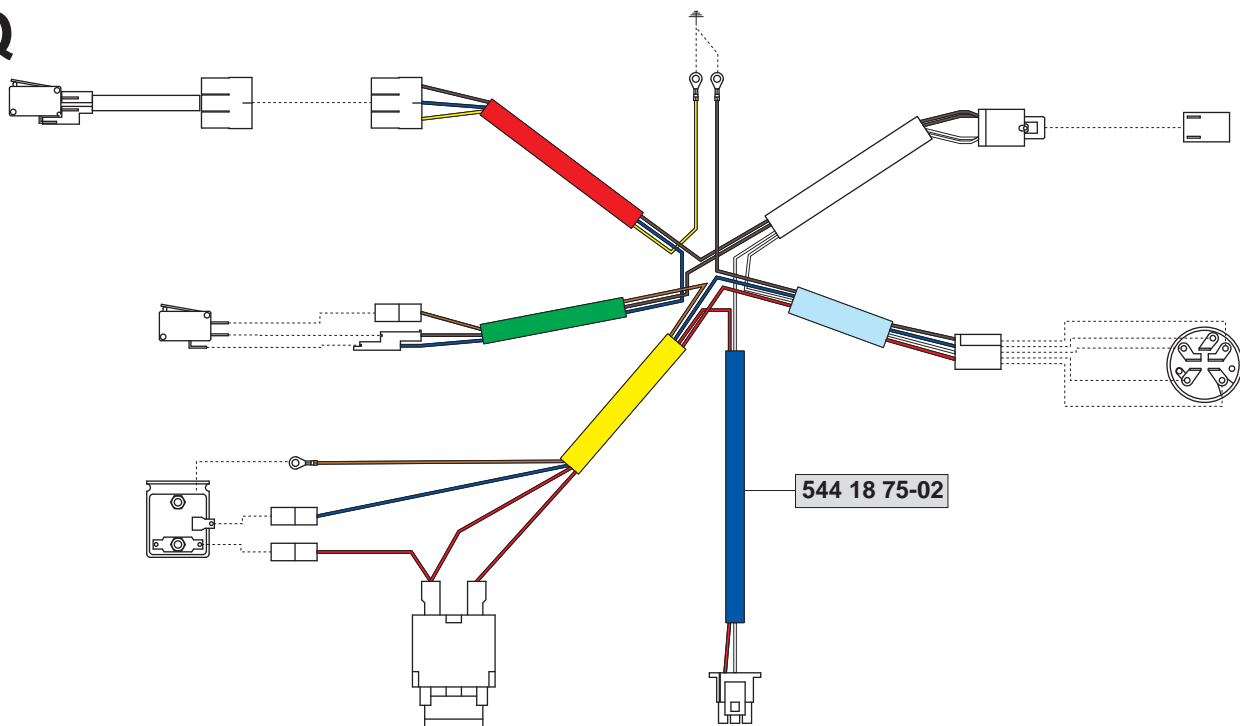
New part,
Neues teil,
Nouvelle piece,
Nueva pieza,
Ny detalj

xxx xx xx-xx =



xxx xx xx-xx = New part,
Neues teil,
Nouvelle piece,
Nueva pieza,
Ny detalj

Q

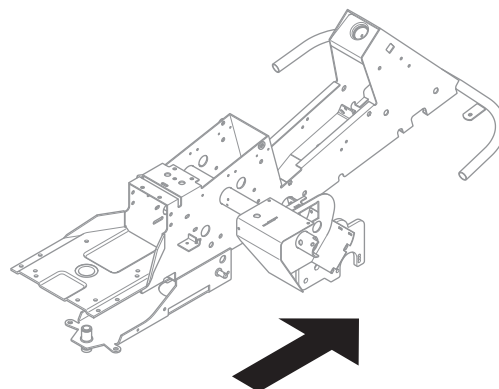
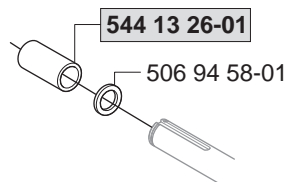


New part,
Neues teil,
Nouvelle piece,
Nueva pieza,
Ny detalj

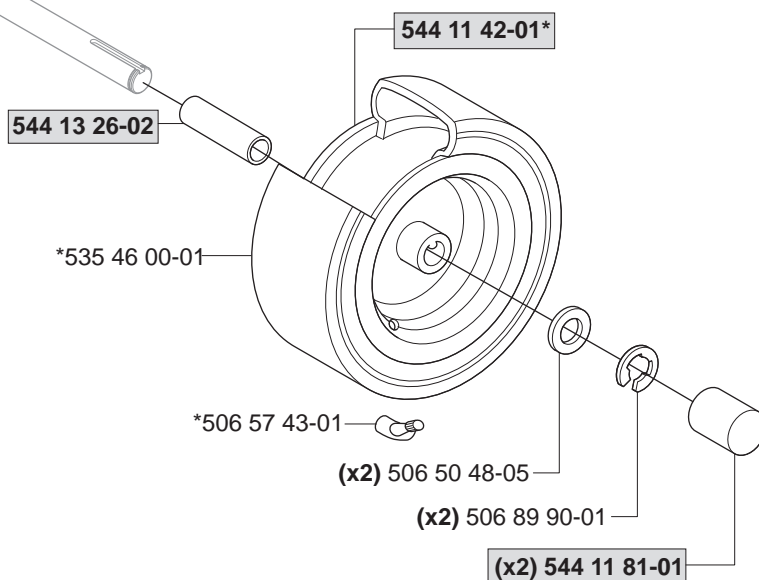
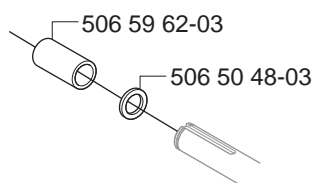
xxx xx xx-xx

=

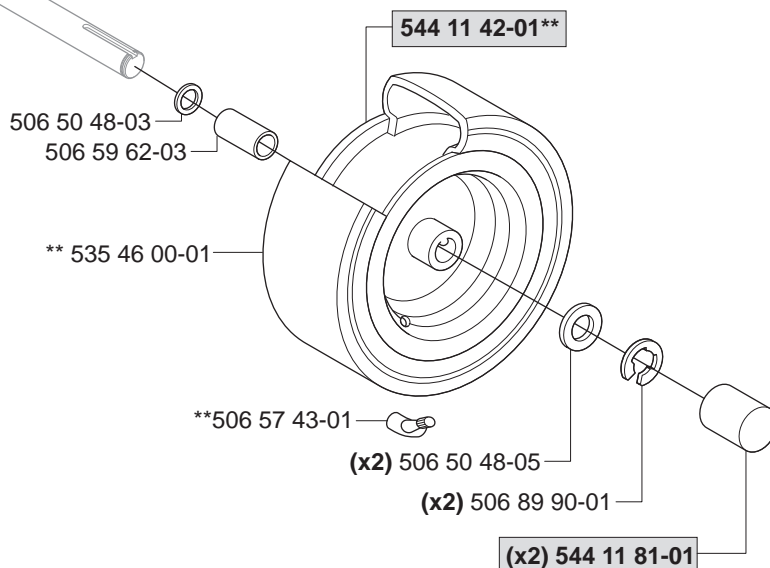
R



***compl 544 12 63-01 (x2)**



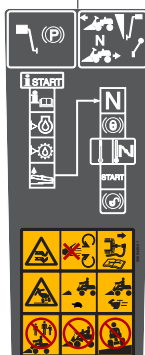
****compl 544 12 63-01 (x2)**



**xxx xx xx-xx = New part,
Neues teil,
Nouvelle piece,
Nueva pieza,
Ny detalj**

S

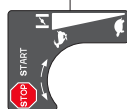
Warning
506 94 48-01



535 43 20-01



506 84 28-01



506 84 28-03



506 58 45-01



506 91 57-01



544 21 14-01 (x2)



544 14 50-01 (x2)



535 45 00-01



535 44 99-01



535 50 51-01



535 50 51-02



535 45 01-01



535 45 01-01



544 10 70-01

Rider 13 AWD

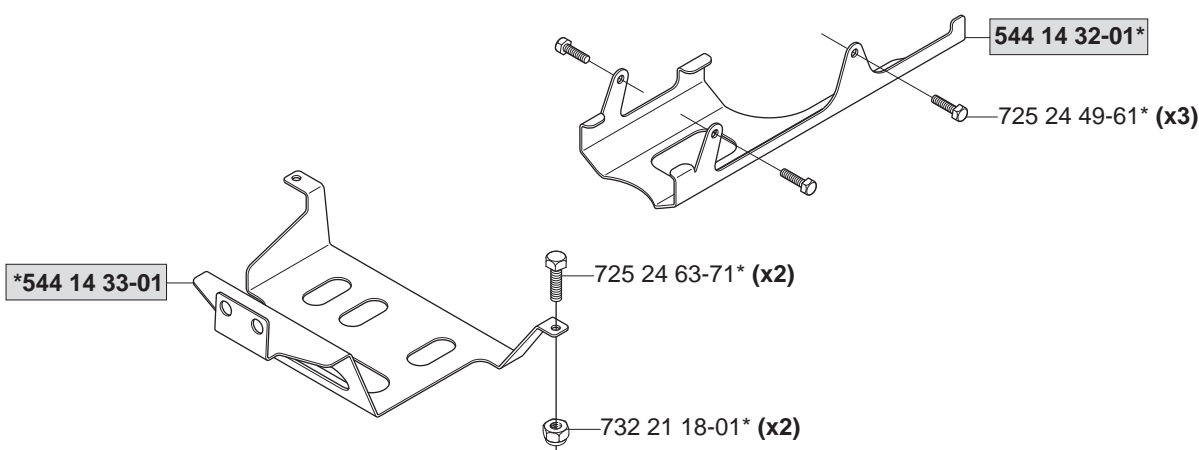
544 10 70-02

Rider 13 AWD

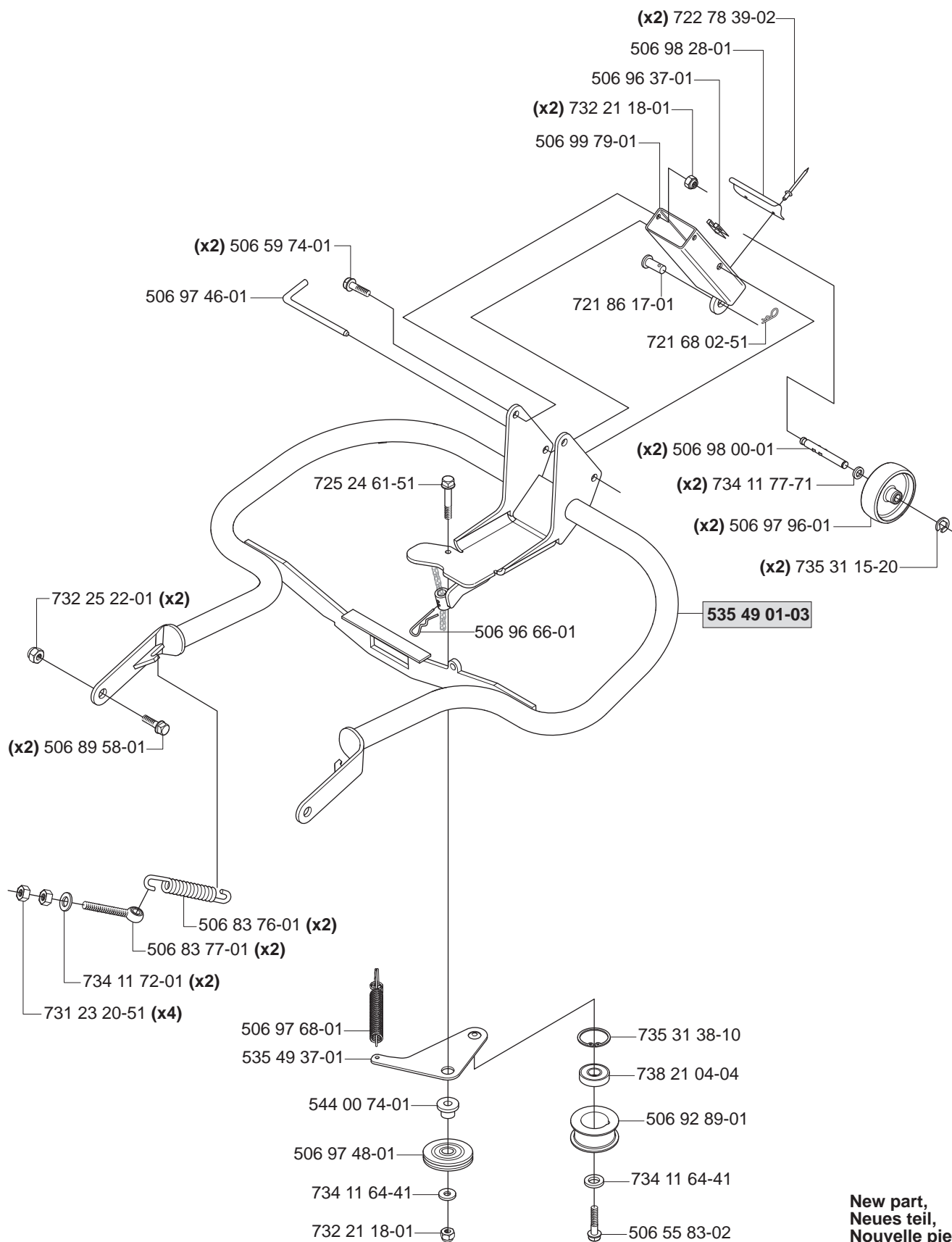
T

Accessories
Zubehöre
Accessoires
Acessorios
Tillbehör

*compl 544 06 93-03



xxx xx xx-xx = New part,
Neues teil,
Nouvelle piece,
Nueva pieza,
Ny detalj

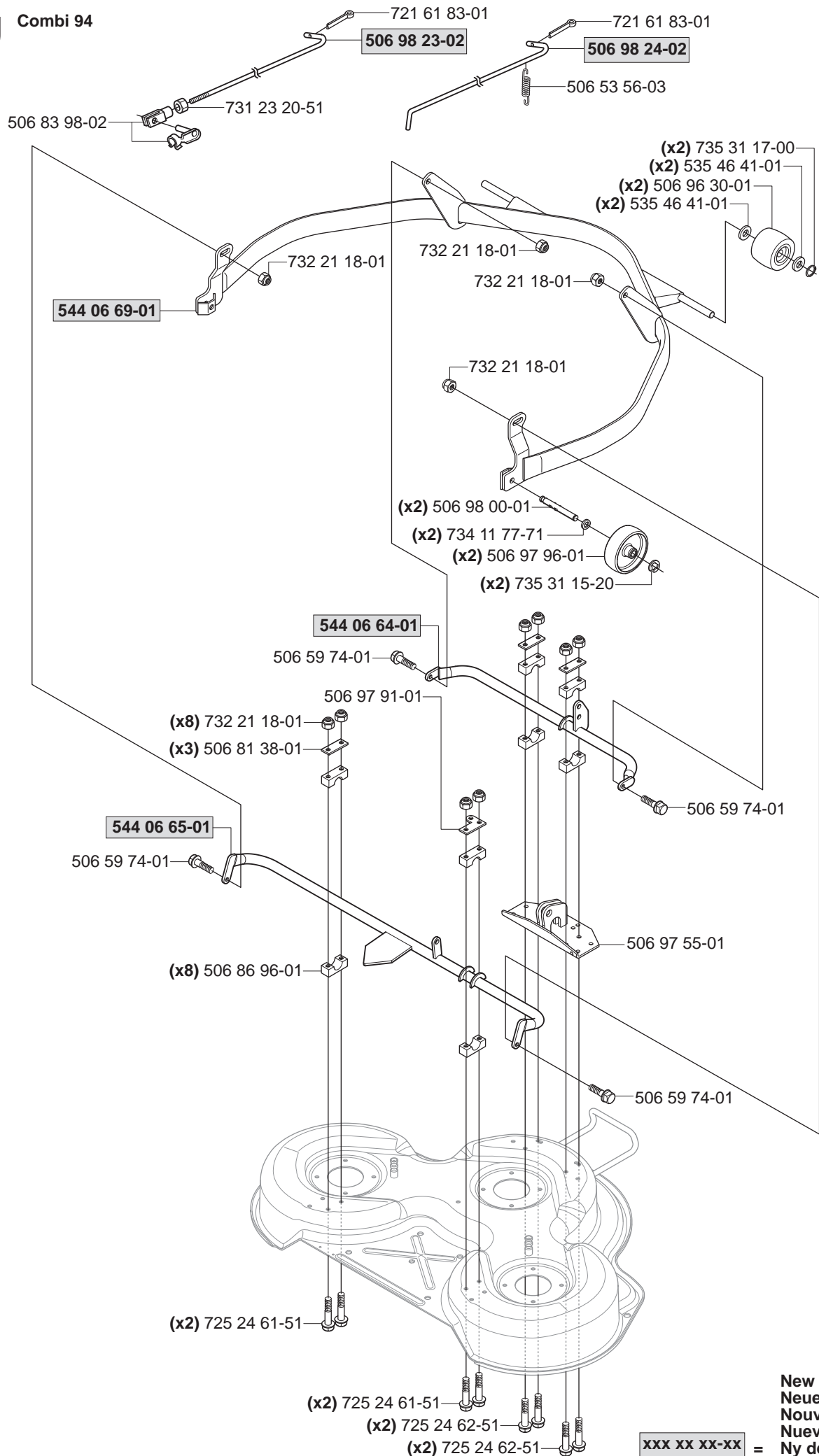


New part,
Neues teil,
Nouvelle piece,
Nueva pieza,
Ny detalj

xxx xx xx-xx =

U

Combi 94

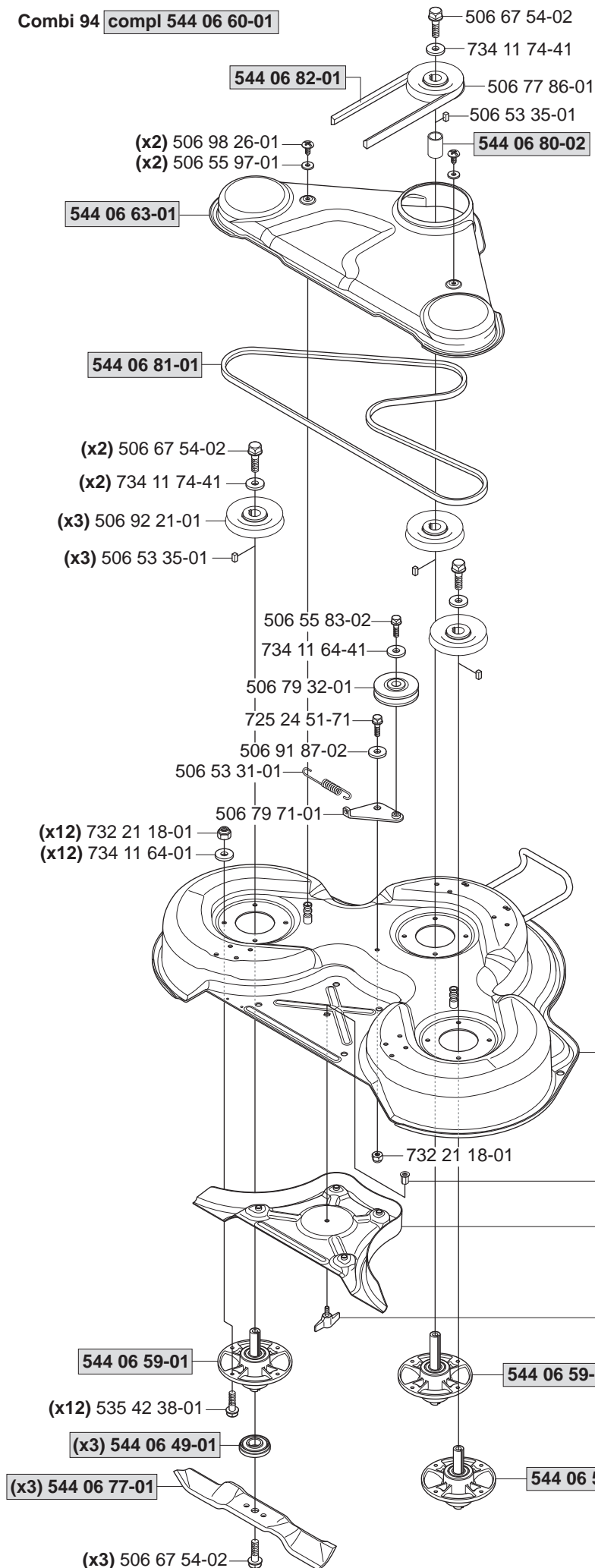


New part,
Neues teil,
Nouvelle piece,
Nueva pieza,
Ny detalj

xxx xx xx-xx =

V

Combi 94 compl 544 06 60-01



Yttre.
Outer.
Exterieur.
Äusser.
Ulko.

**compl 544 06 59-01 (x2)

**544 06 79-02

**738 23 04-34

**544 06 80-01

**544 06 78-01

**738 23 04-34

Mitten.
Centre.
Centre.
Zentrum.
Keski.

*compl 544 06 59-02

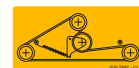
*544 06 79-01

*738 23 04-34

*544 06 80-01

*544 06 78-01

*738 23 04-34



506 78 97-01

Combi 94

544 23 81-01

544 06 57-01

544 06 58-01

544 06 61-01

544 06 59-01

544 06 59-02

544 06 59-01

New part,
Neues teil,
Nouvelle piece,
Nueva pieza,
Ny detalj

xxx xx xx-xx =