

Rider 11

Spare parts

Ersatzteile

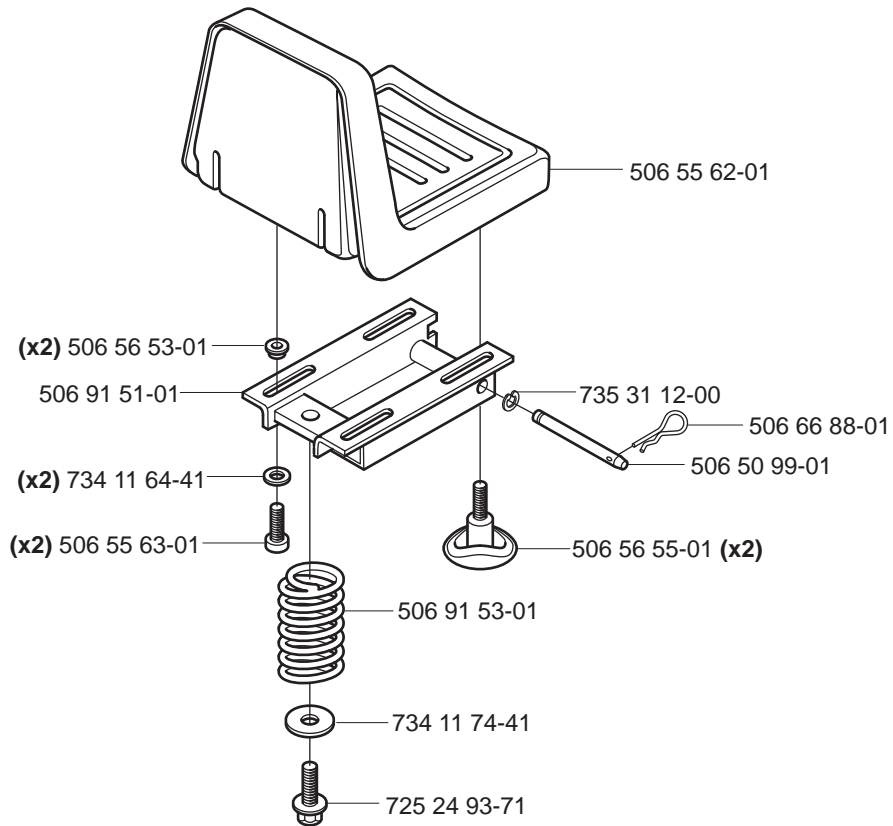
Pièces détachées

Reserve onderdelen

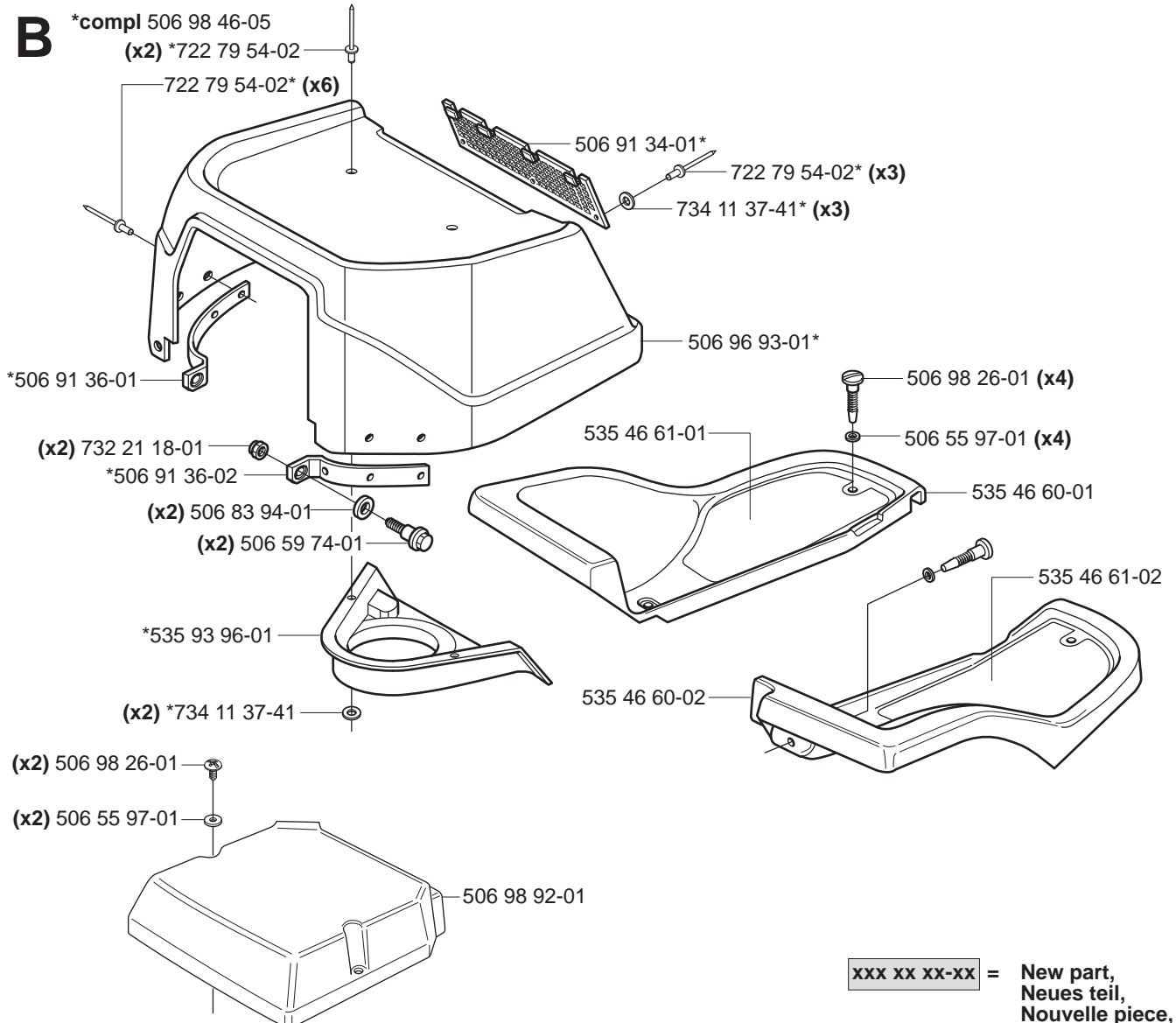
Repuestos

Reservdelar

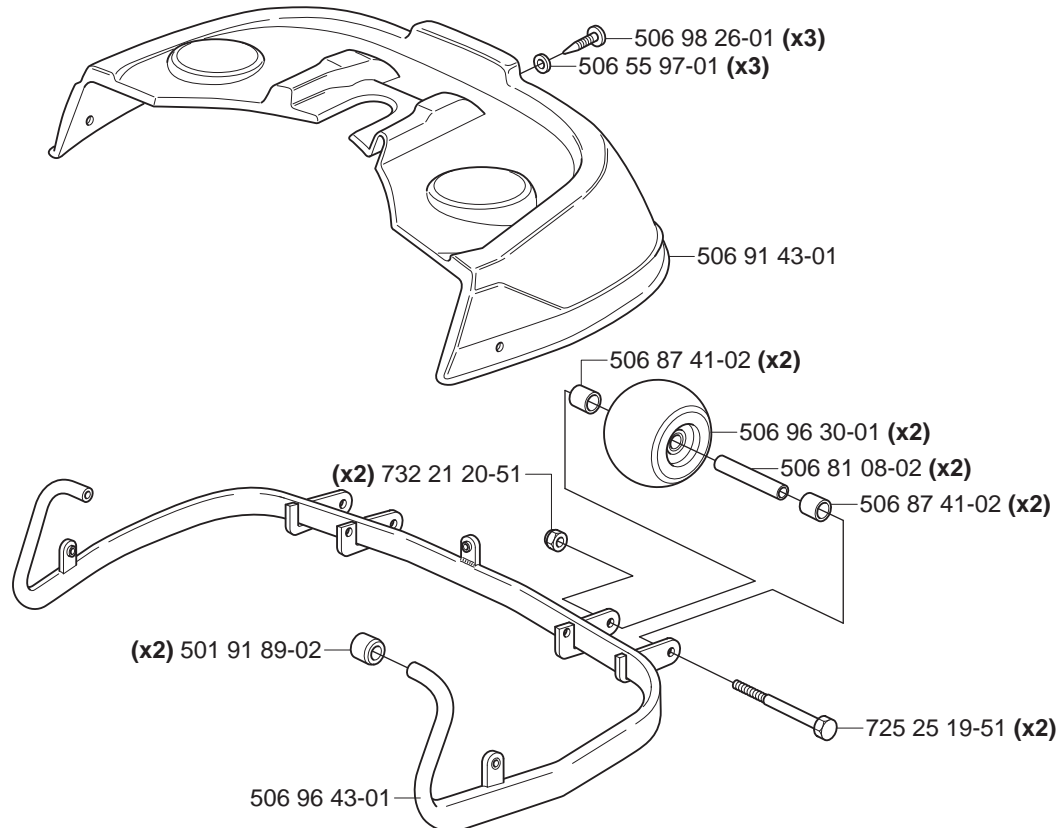
A



B

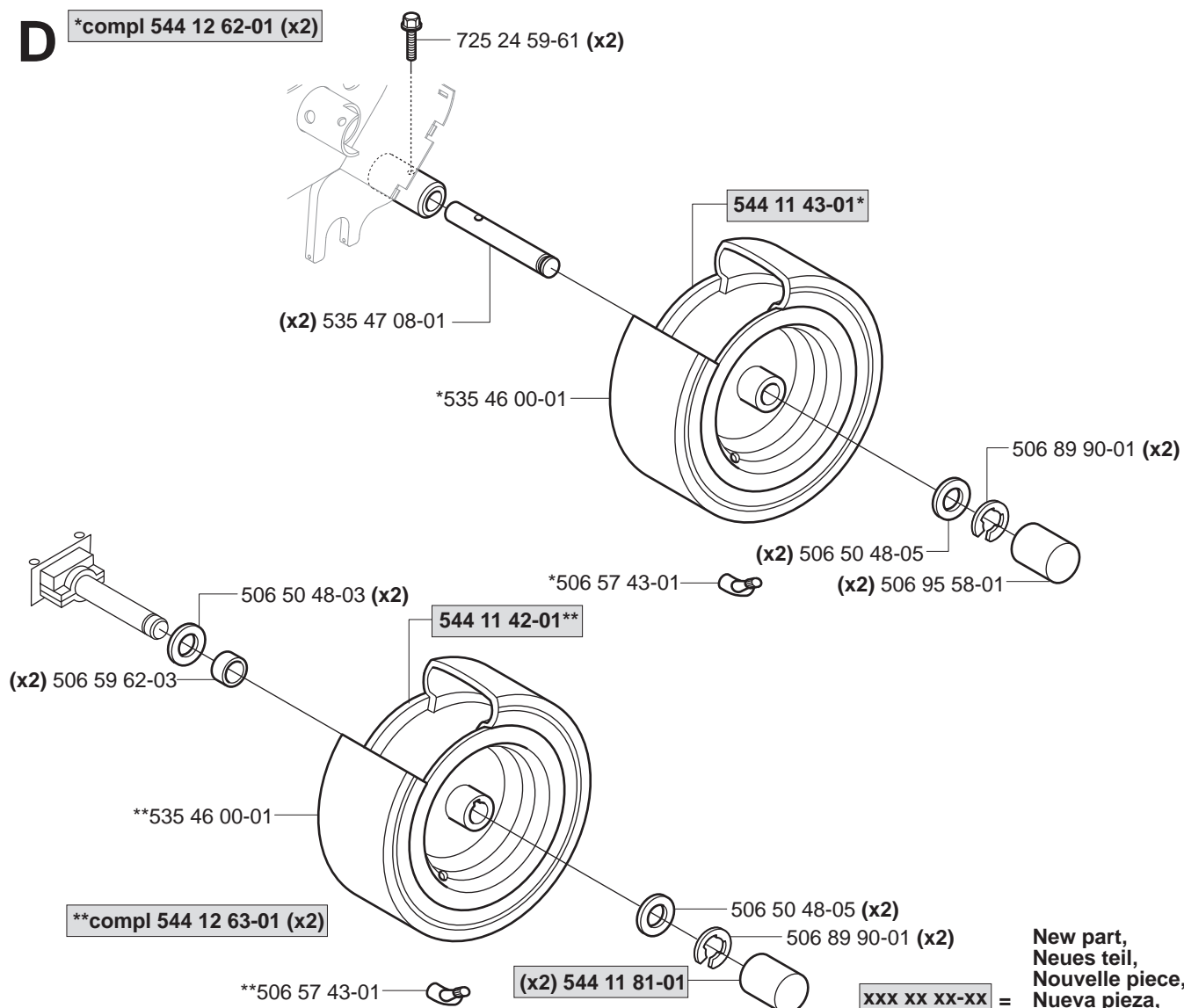


C

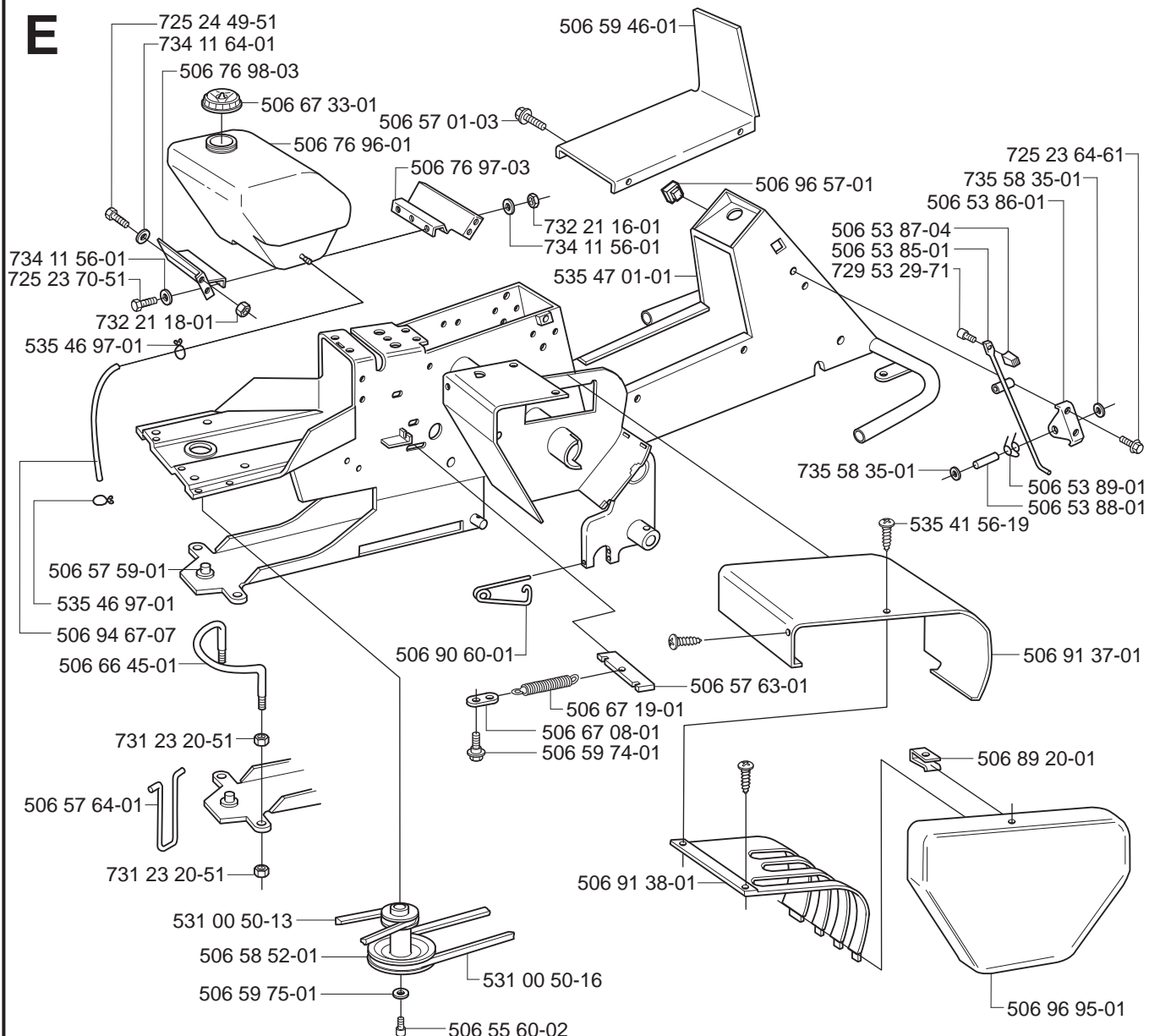


D

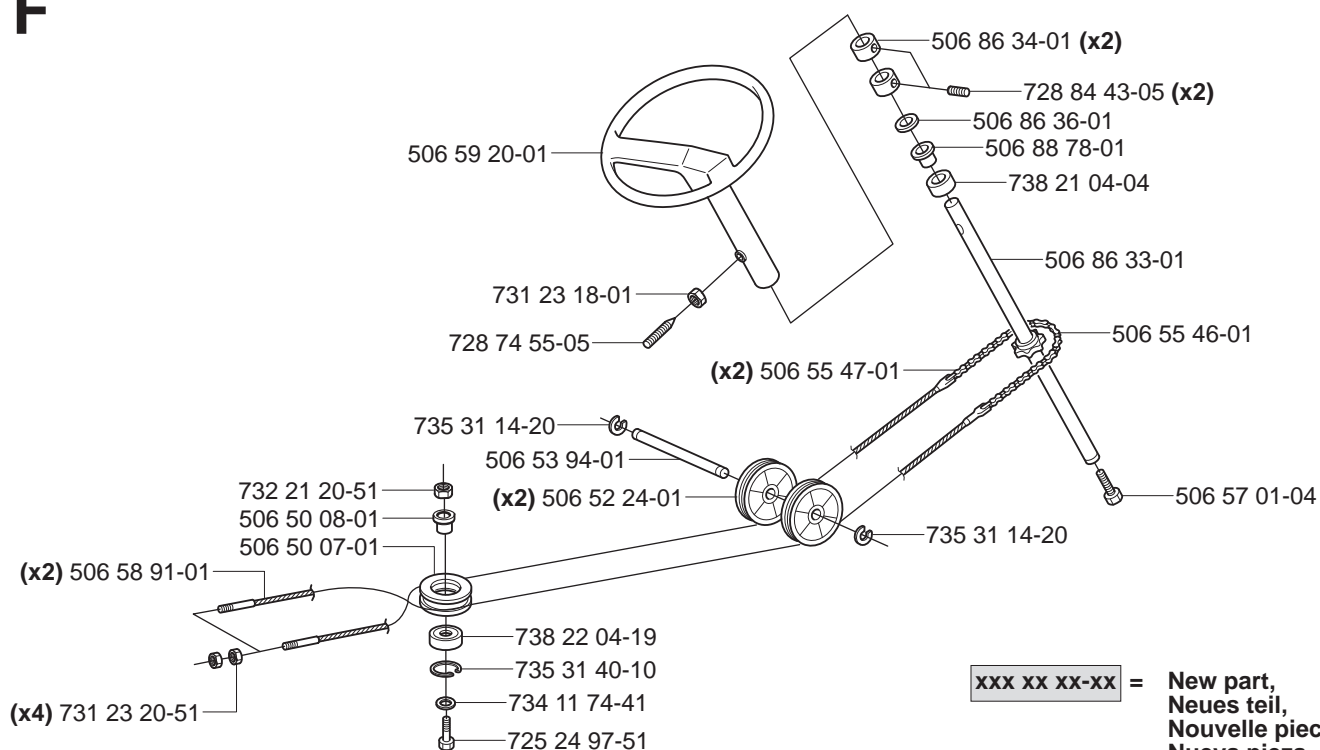
***compl 544 12 62-01 (x2)**



E

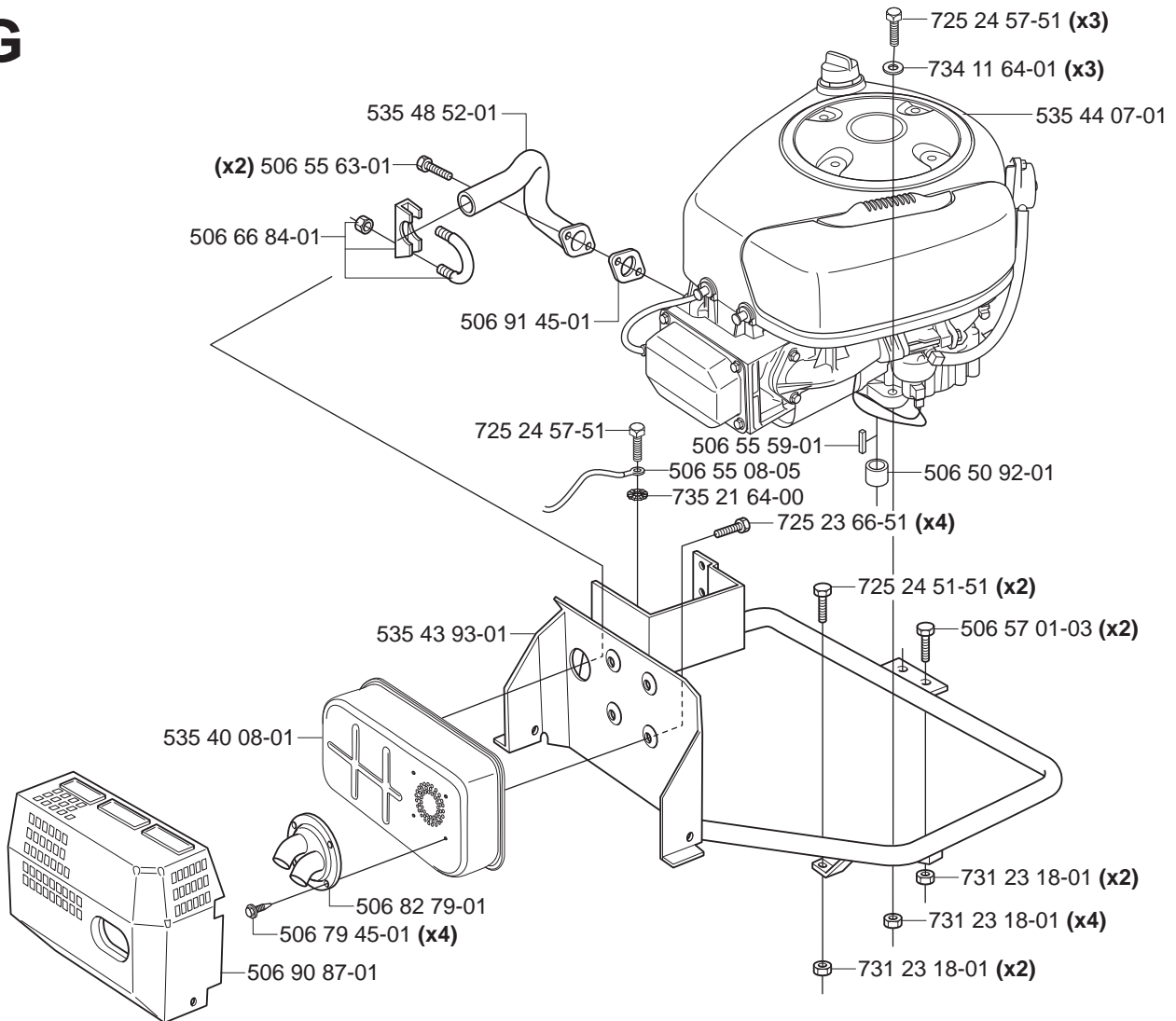


F

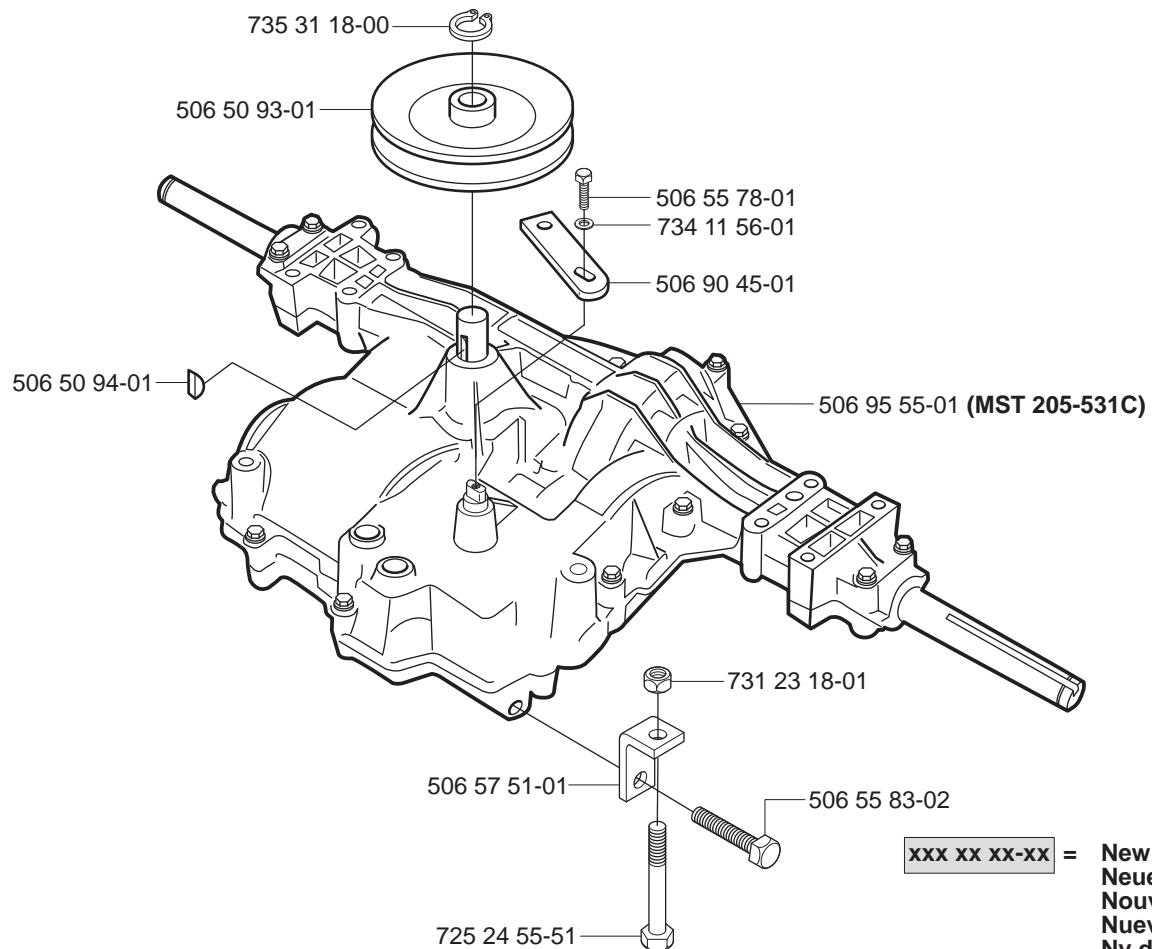


xxx xx xx-xx = New part,
Neues teil,
Nouvelle piece,
Nueva pieza,
Ny detalj

G

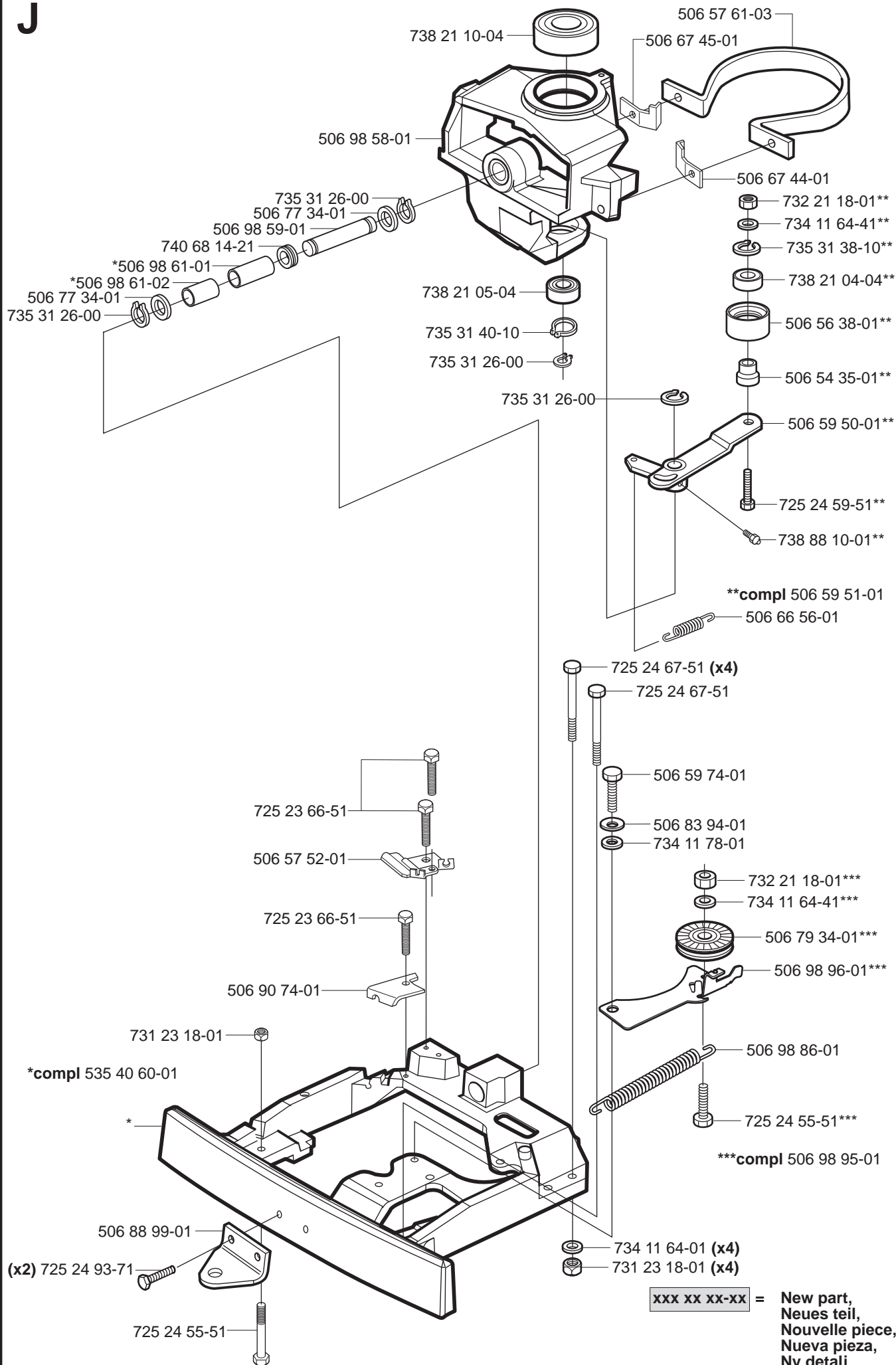


H



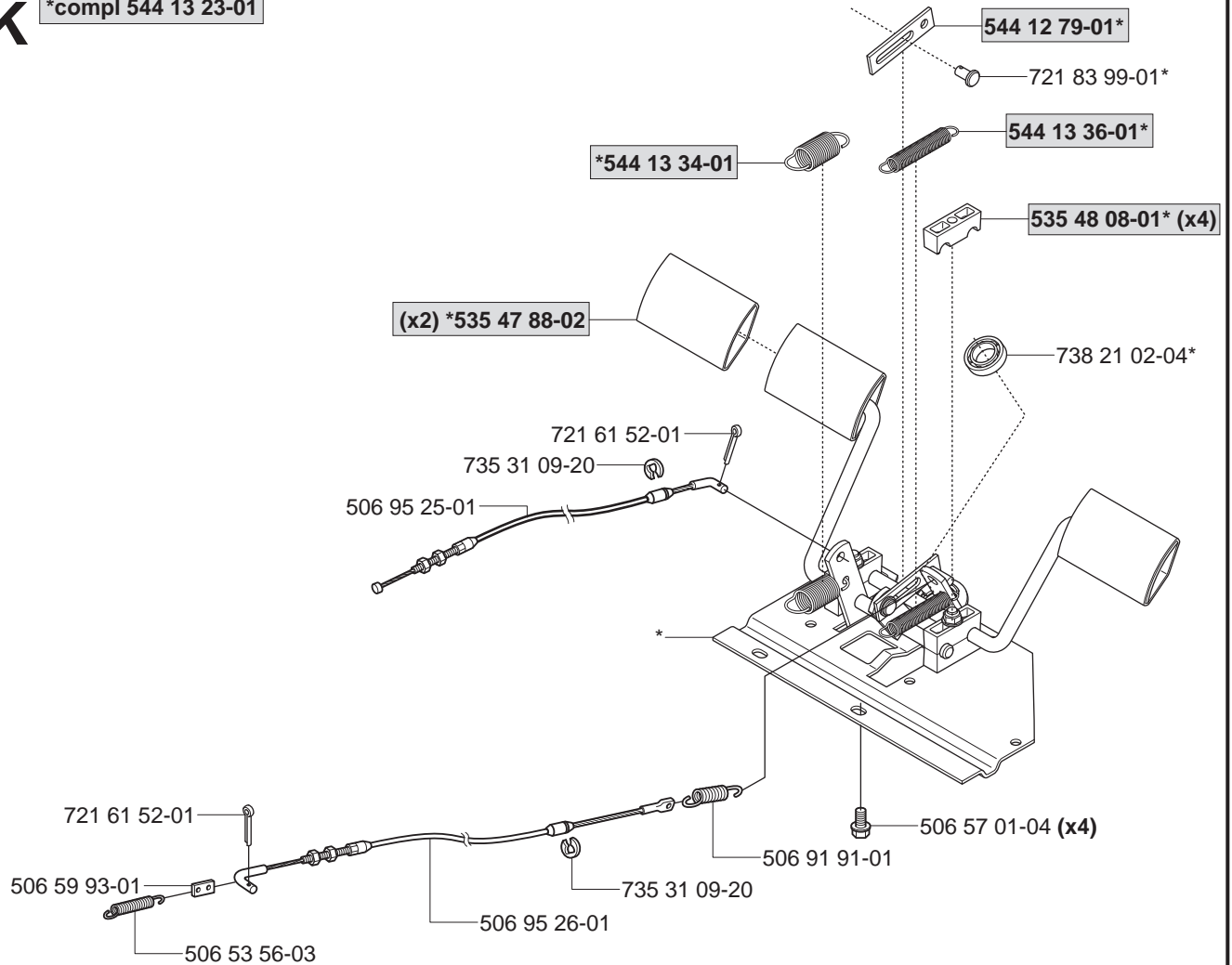
xxx xx xx-xx = New part,
Neues teil,
Nouvelle piece,
Nueva pieza,
Ny detalj

J

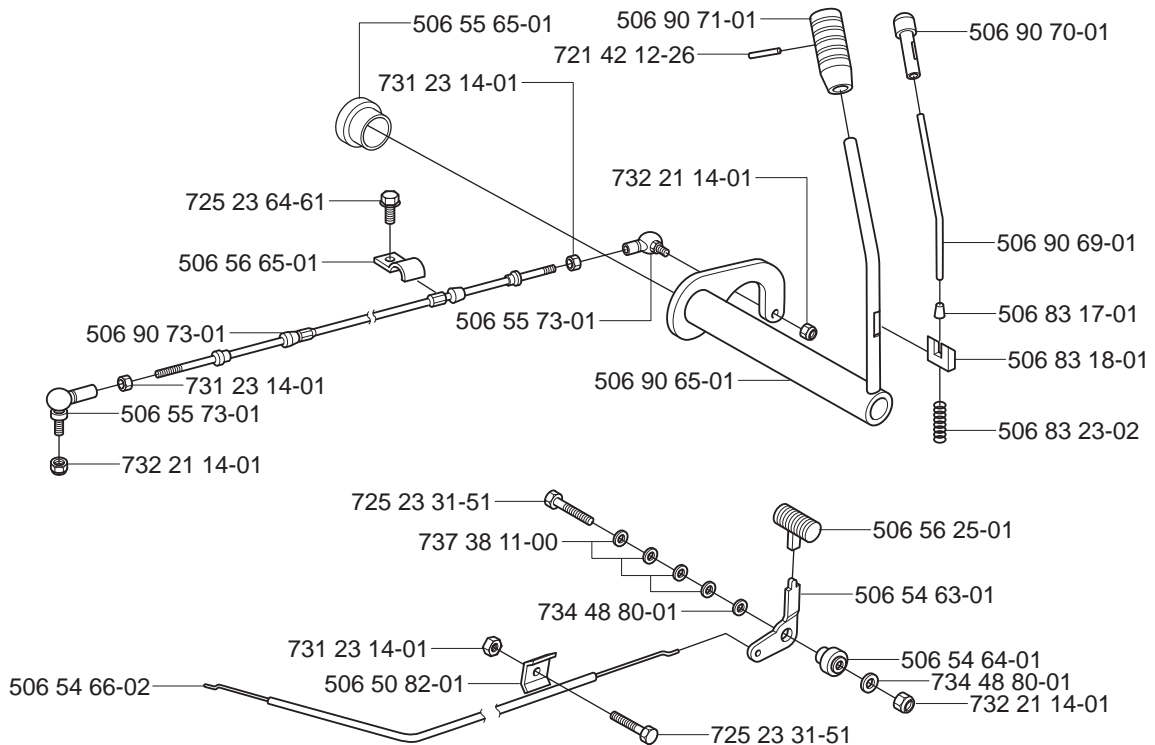


K

*compl 544 13 23-01

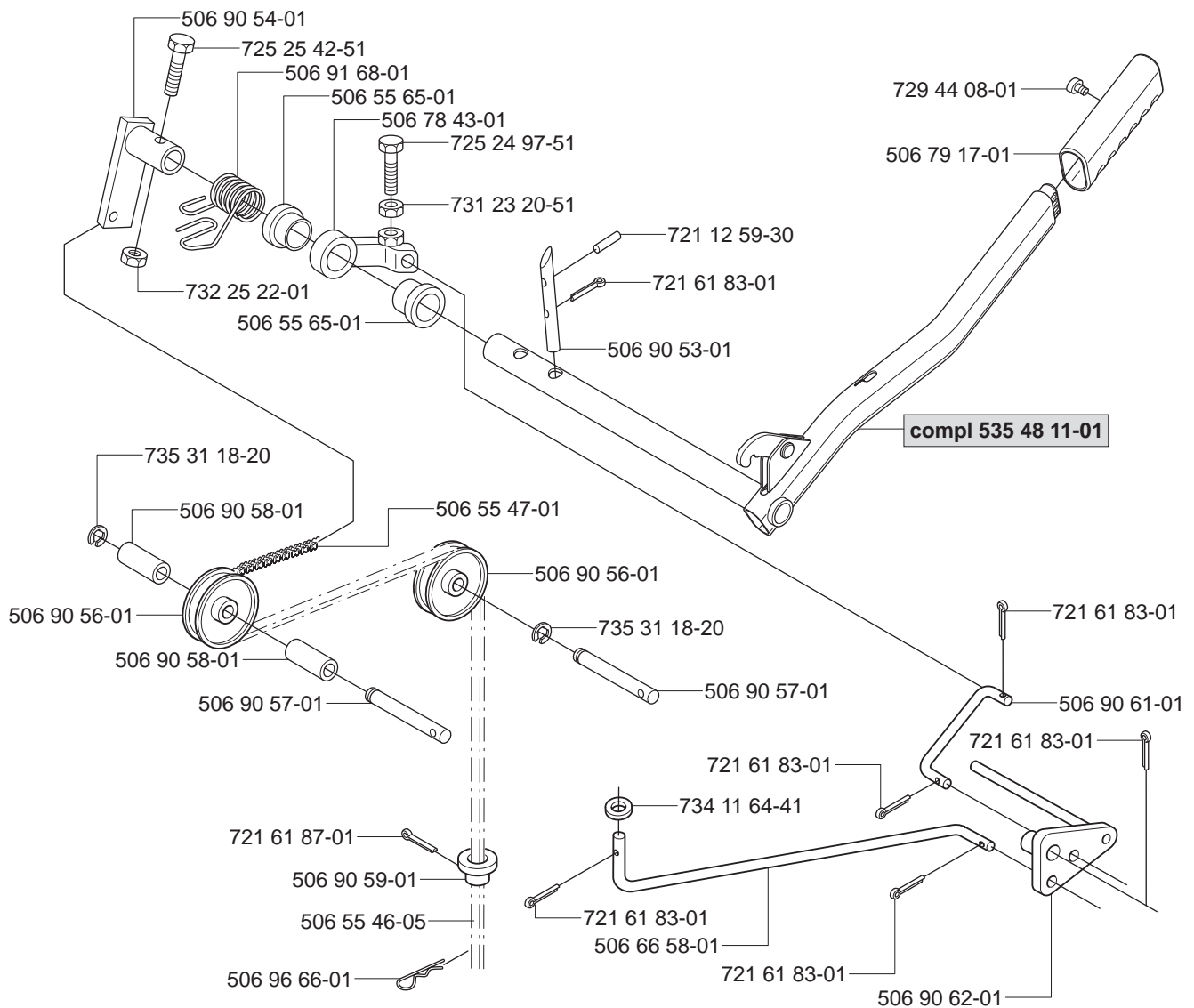


L

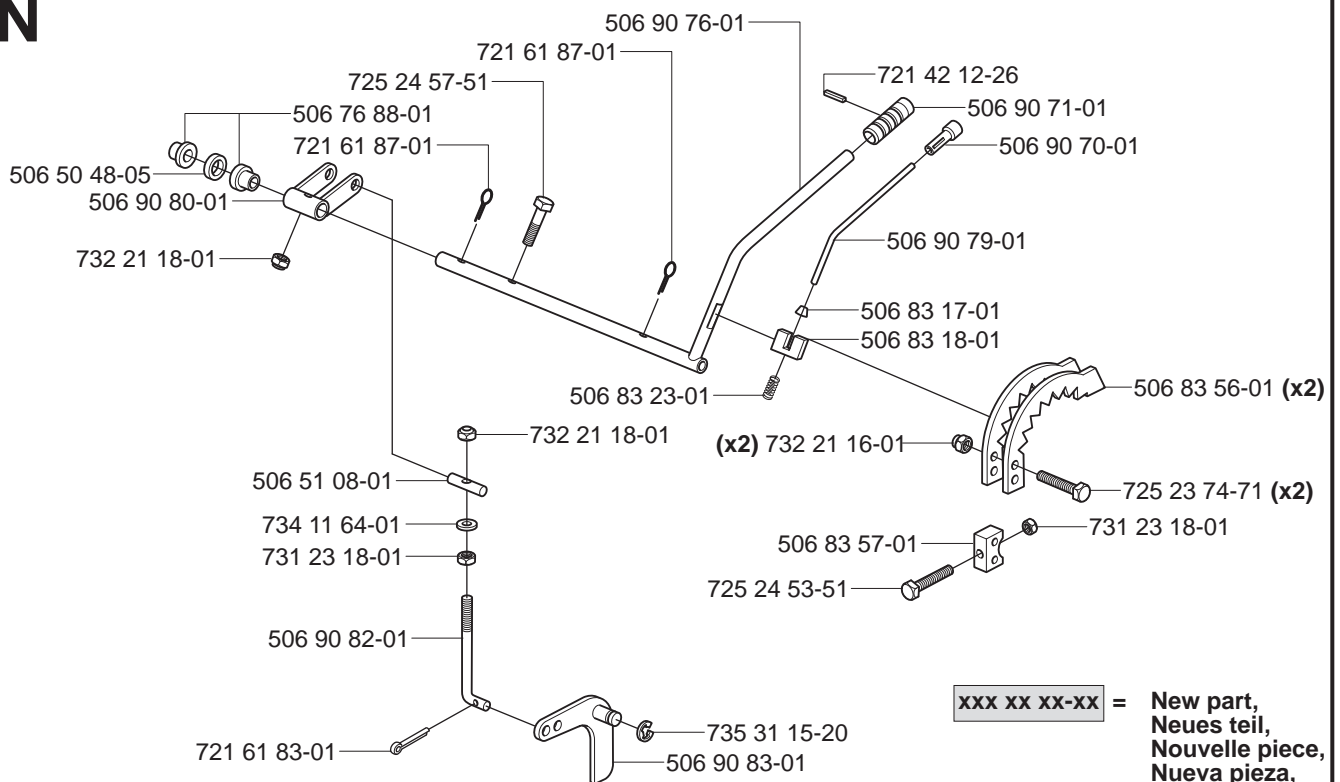


xxx xx xx-xx = New part,
Neues teil,
Nouvelle piece,
Nueva pieza,
Ny detalj

M

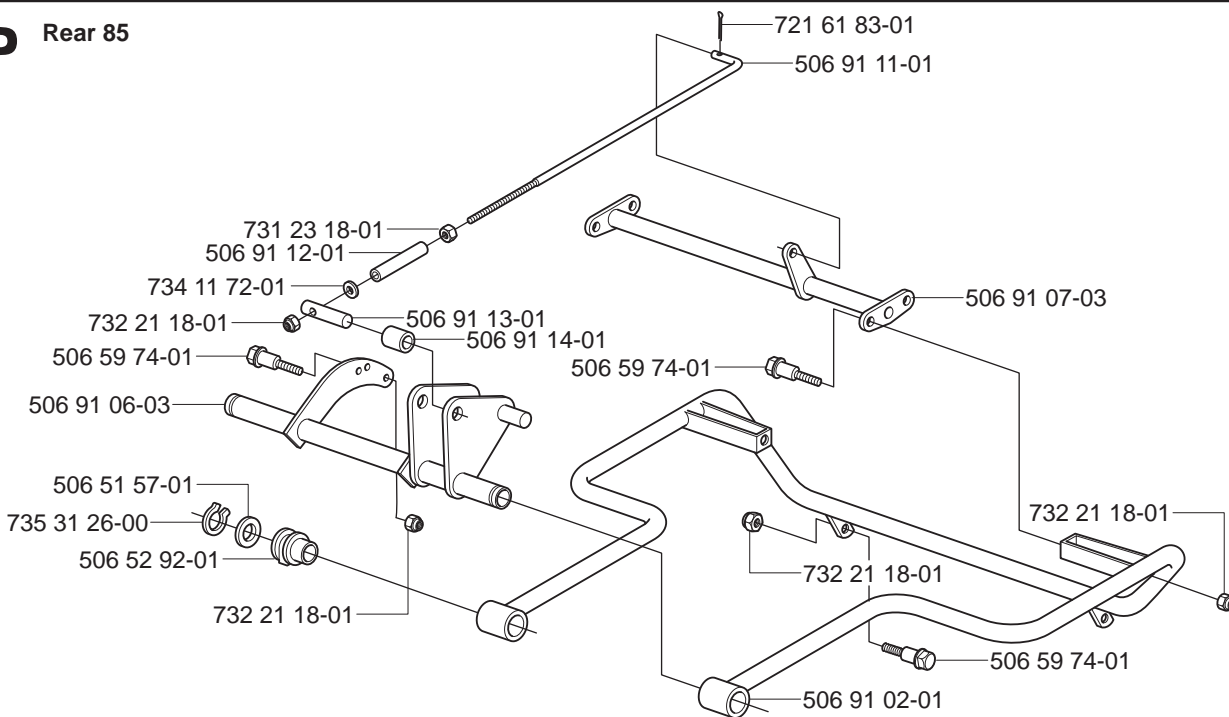


N

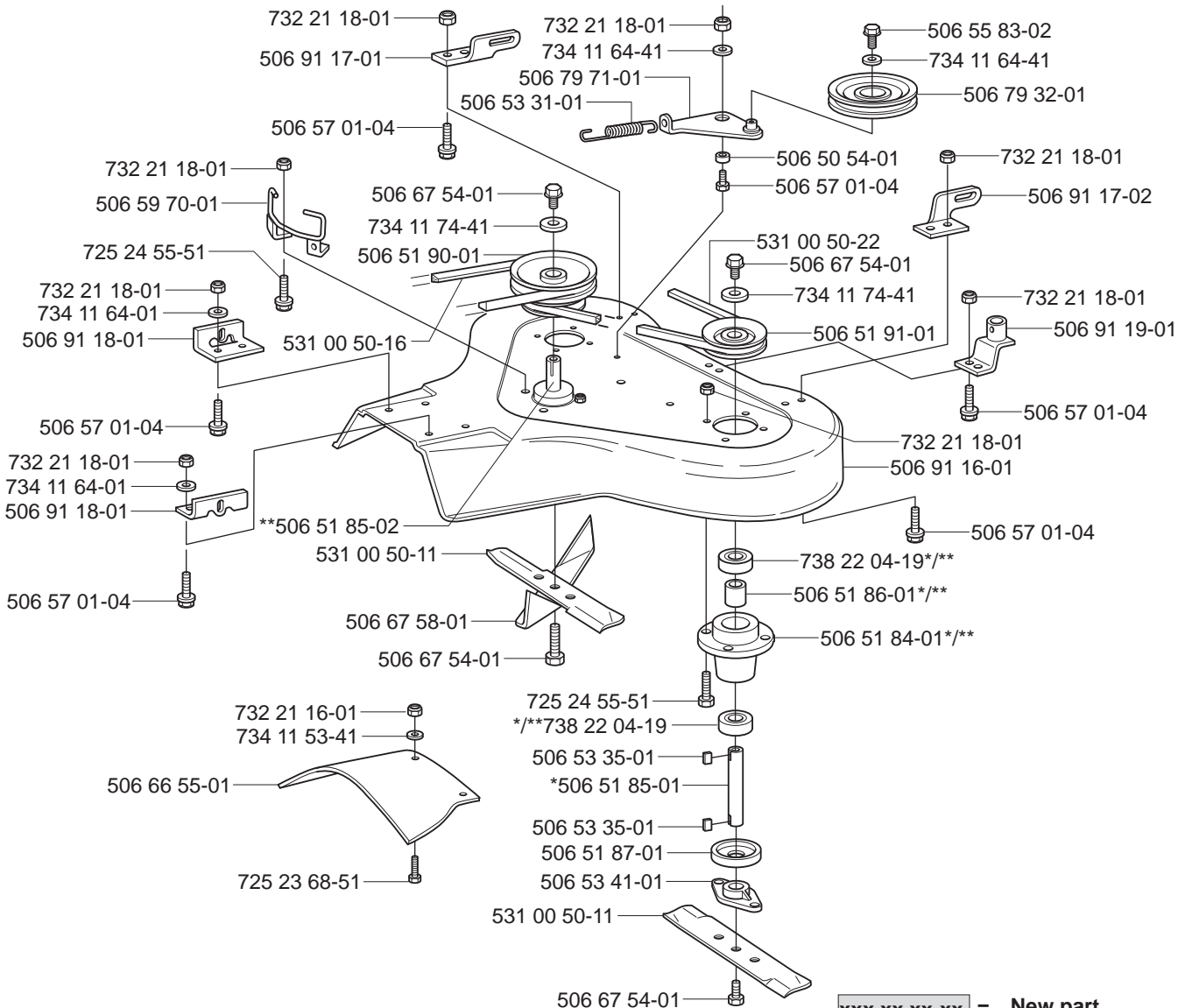


xxx xx xx-xx = New part,
Neues teil,
Nouvelle piece,
Nueva pieza,
Ny detalj

P



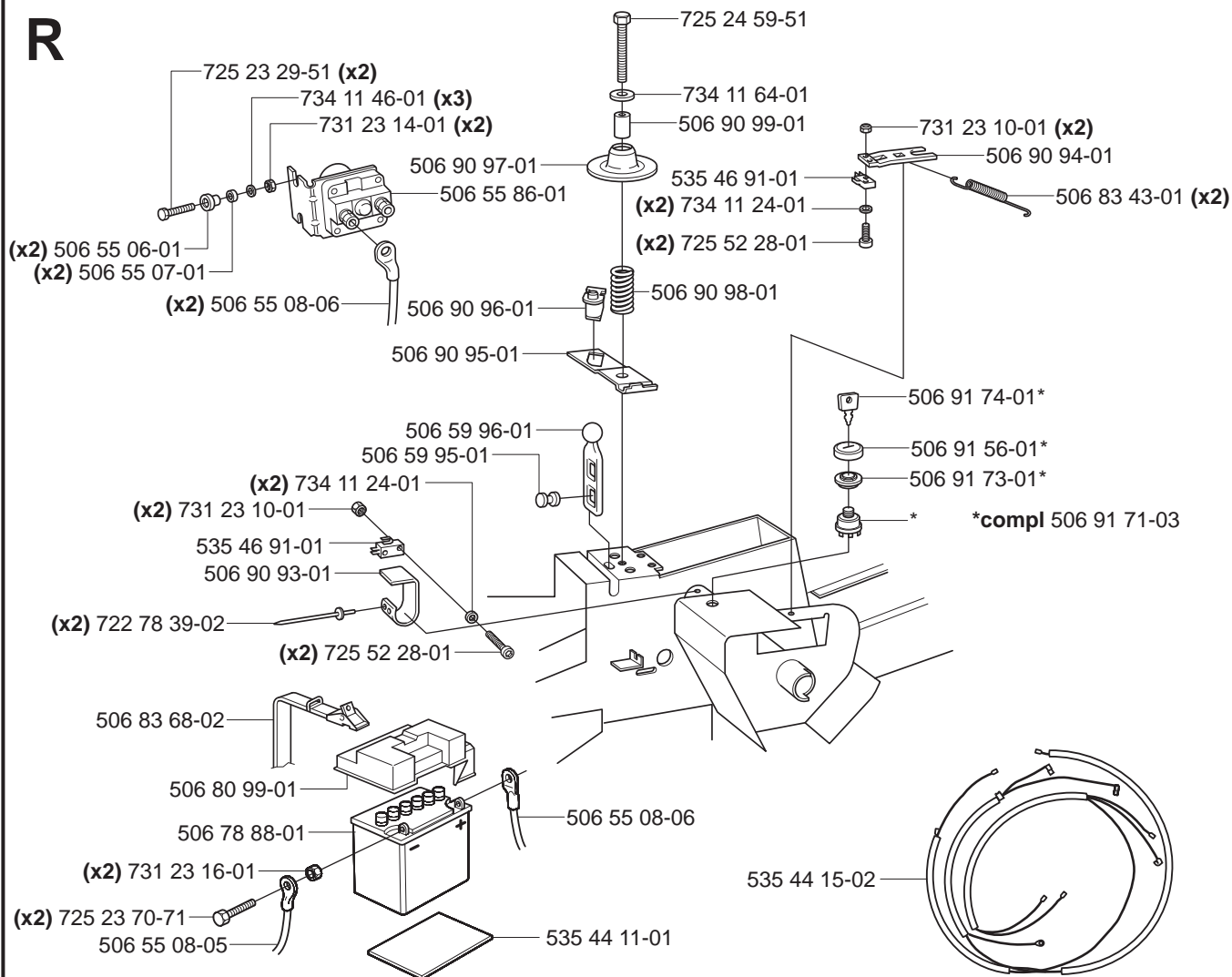
Q



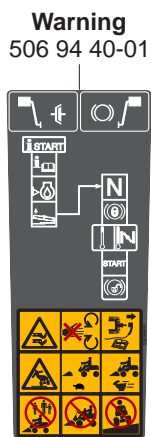
****compl 506 53 34-02 Mitten. Centre. Centre. Zentrum. Keski.**

xxx xx xx-xx = New part,
Neues teil,
Nouvelle piece,
Nueva pieza,
Ny detalj

R



S



506 94 40-01

535 43 20-01



506 96 13-01



506 84 28-01



506 84 28-03

506 58 45-01

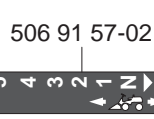


535 45 00-01



506 91 57-01

506 91 57-02



535 44 98-01

Husqvarna

535 44 99-01

Husqvarna

535 45 01-01 (x2)

Husqvarna Husqvarna

535 44 93-01 **Rider 11**

Rider 11 535 44 93-02

xxx xx xx-xx = New part,
Neues teil,
Nouvelle piece,
Nueva pieza,
Ny detalj