

# 372, 372 EPA, 362 Special, 362 Special EPA

**Spare parts**

**Ersatzteile**

**Pièces détachées**

**Reserve onderdelen**

**Repuestos**

**Reservdelar**

Replaces

Ersetzt

Remplace

Vervangt

Reemplaza

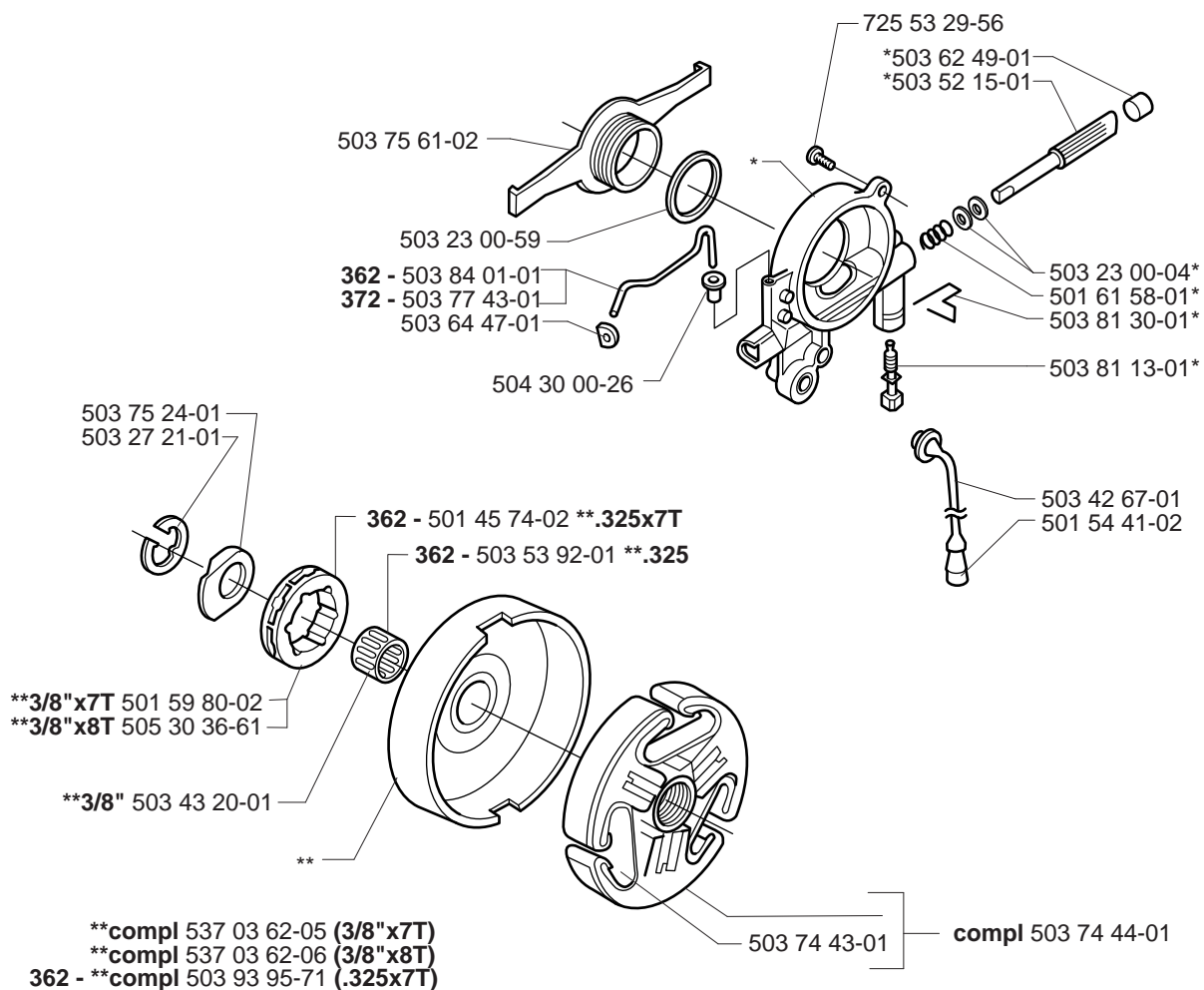
Ersätter

106 26 04-63

\*501 51 72-01

# C

\*compl 503 52 13-03



# D

\*compl 503 62 78-07 Std  
\*\*compl 503 62 78-08 Hd



503 98 74-01\* \*\*

\*503 62 80-01 Std  
\*\*503 81 77-01 Hd

\* \*\*503 20 34-25

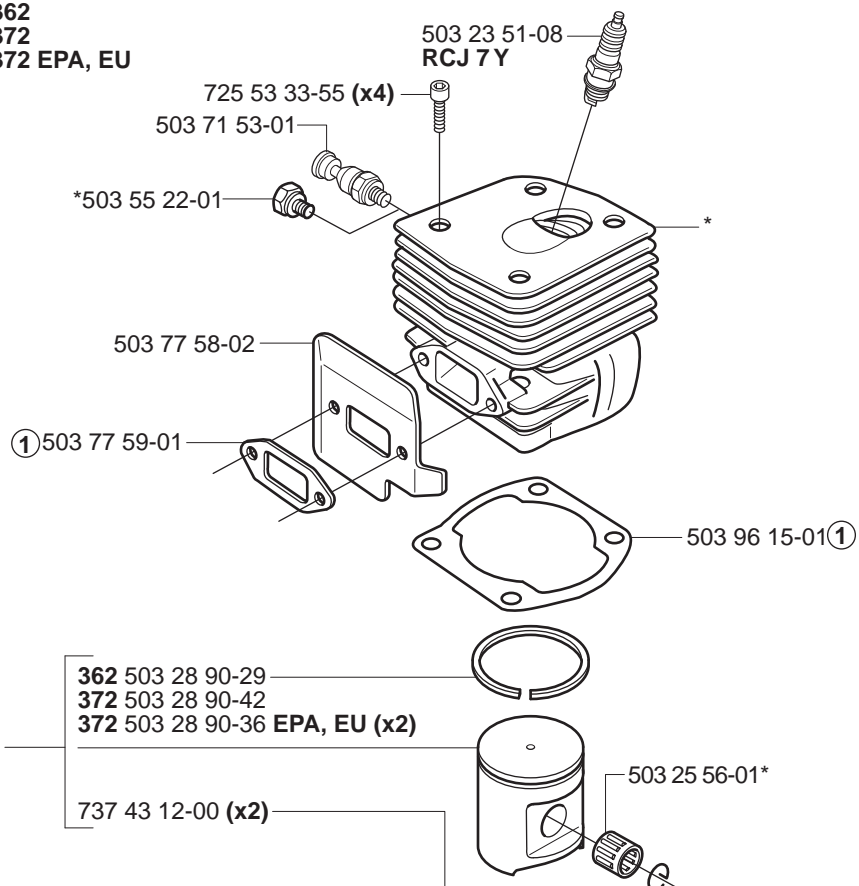
537 01 65-01

503 74 01-02\* \*\*

\*\*\*

**E**

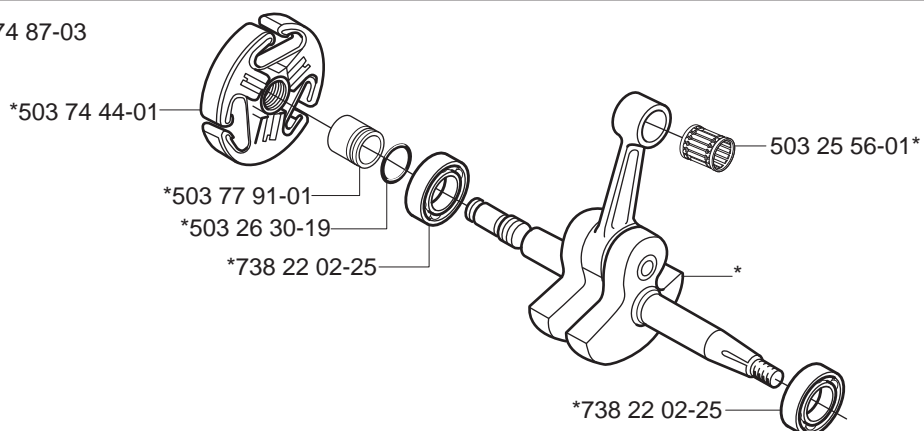
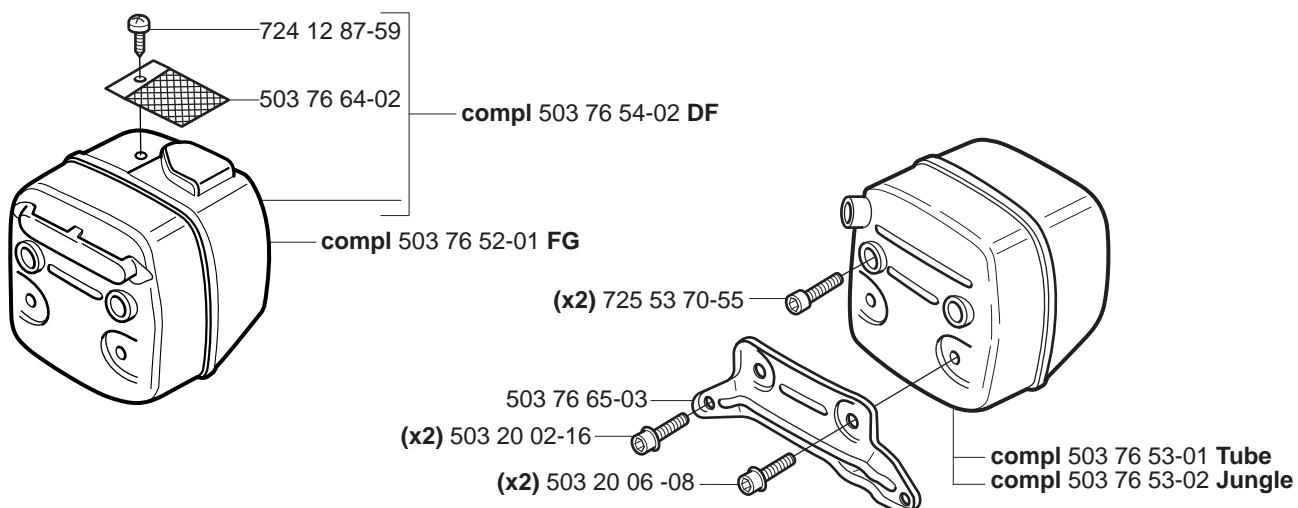
\*compl 503 96 52-71 **362**  
 \*compl 503 62 64-73 **372**  
 \*compl 503 93 93-72 **372 EPA, EU**



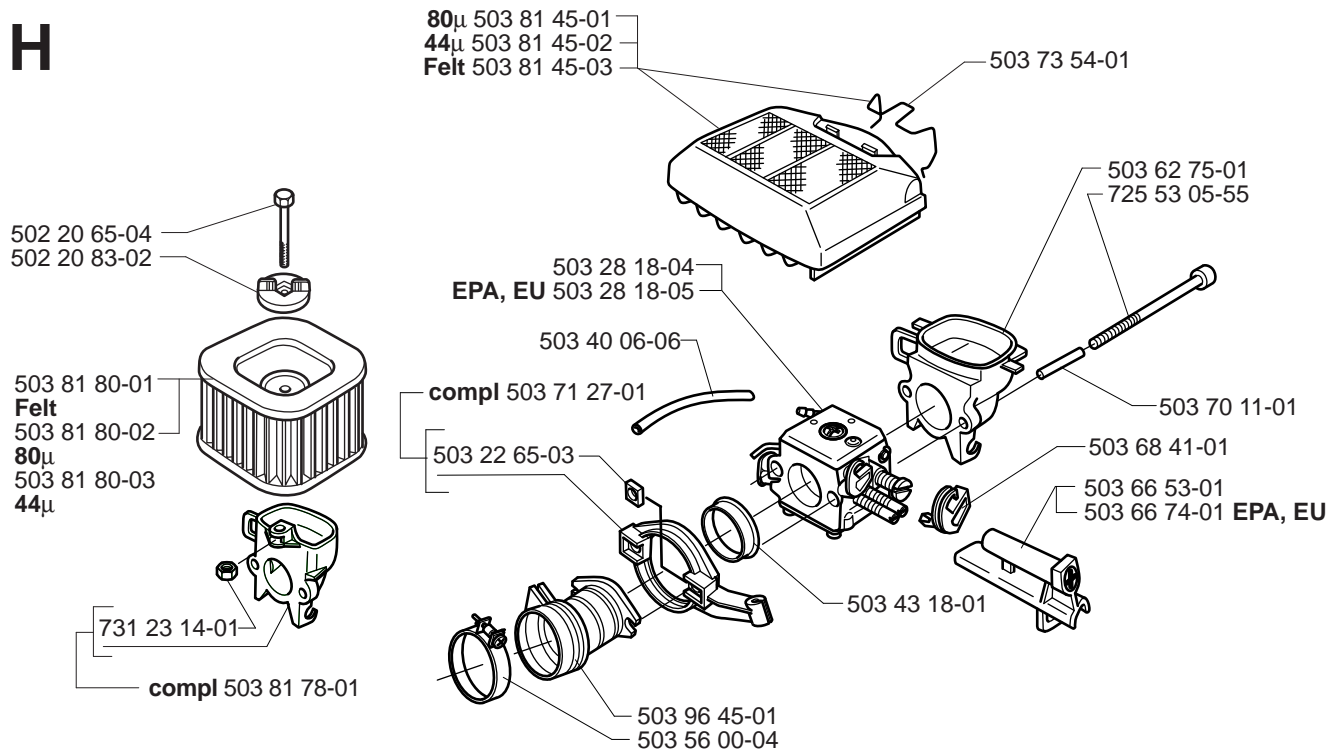
\*503 69 14-71 **362**  
 \*503 69 12-71 **372**  
 \*503 93 92-71 **372 EPA, EU**

**F**

\*compl 503 74 87-03

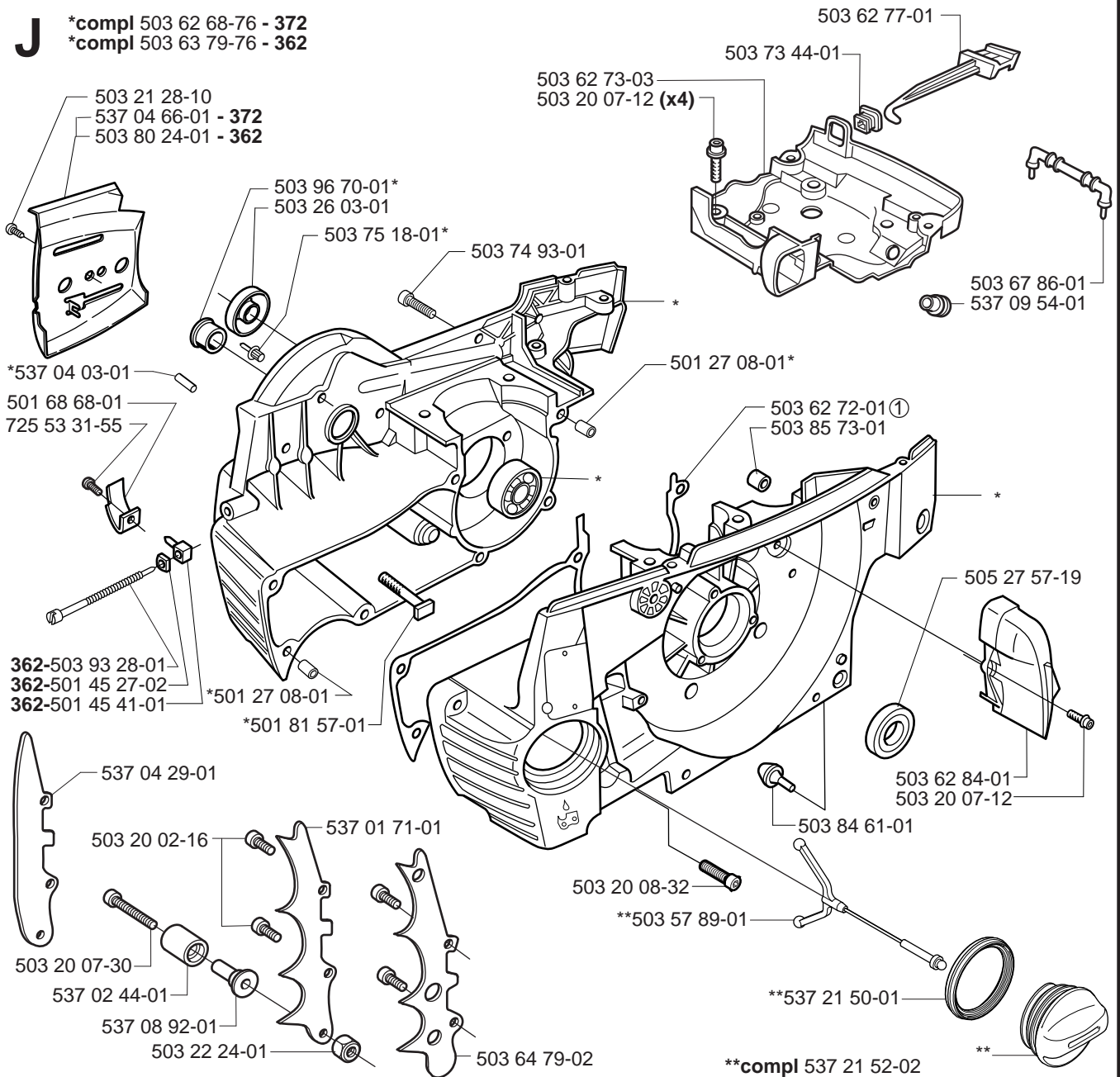
**G**

# H

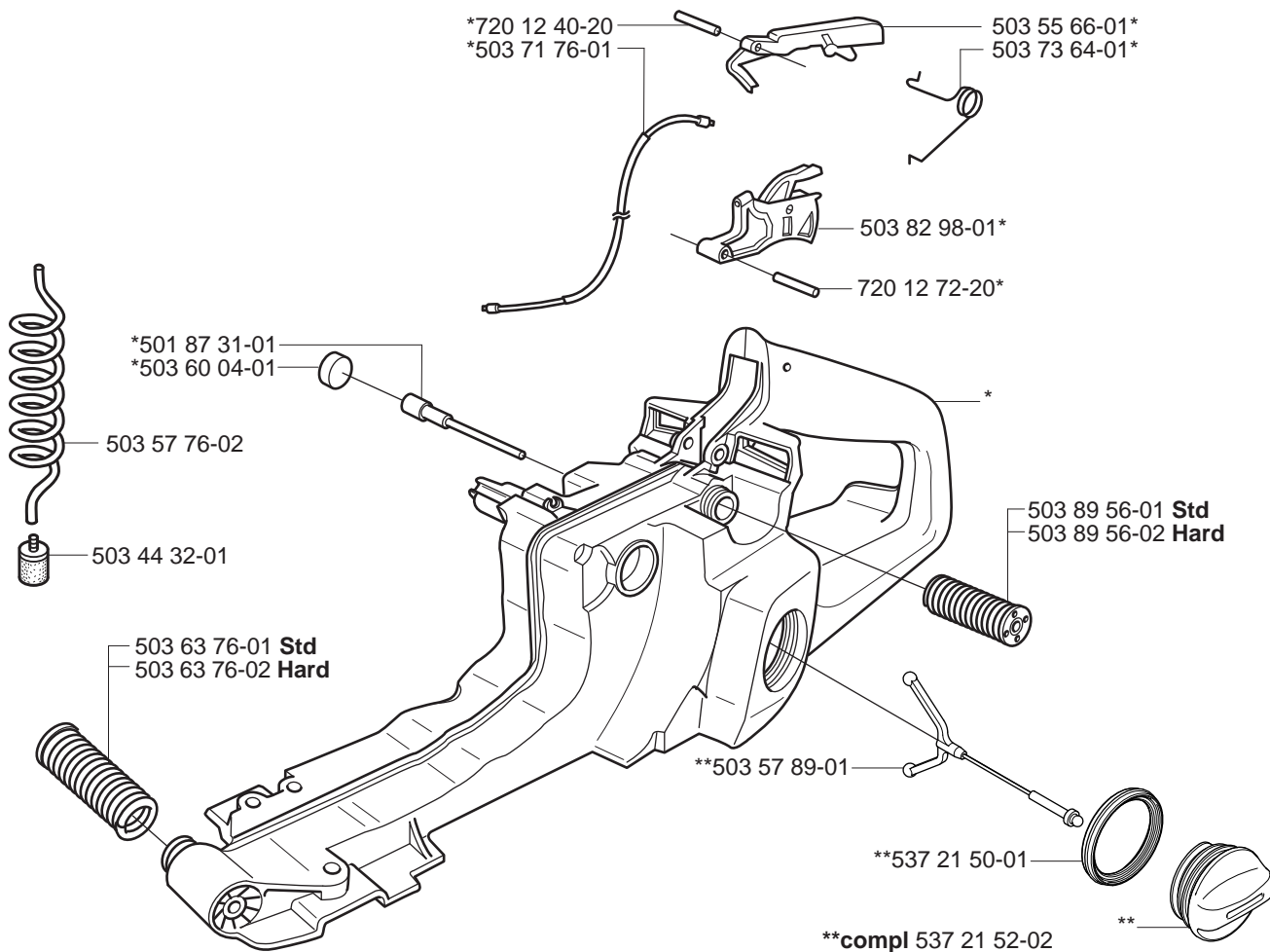


# J

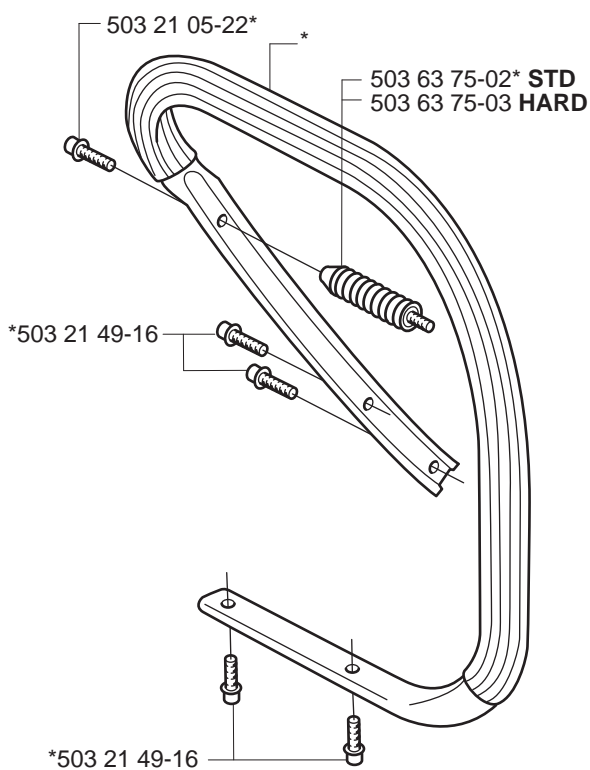
\*compl 503 62 68-76 - 372  
\*compl 503 63 79-76 - 362



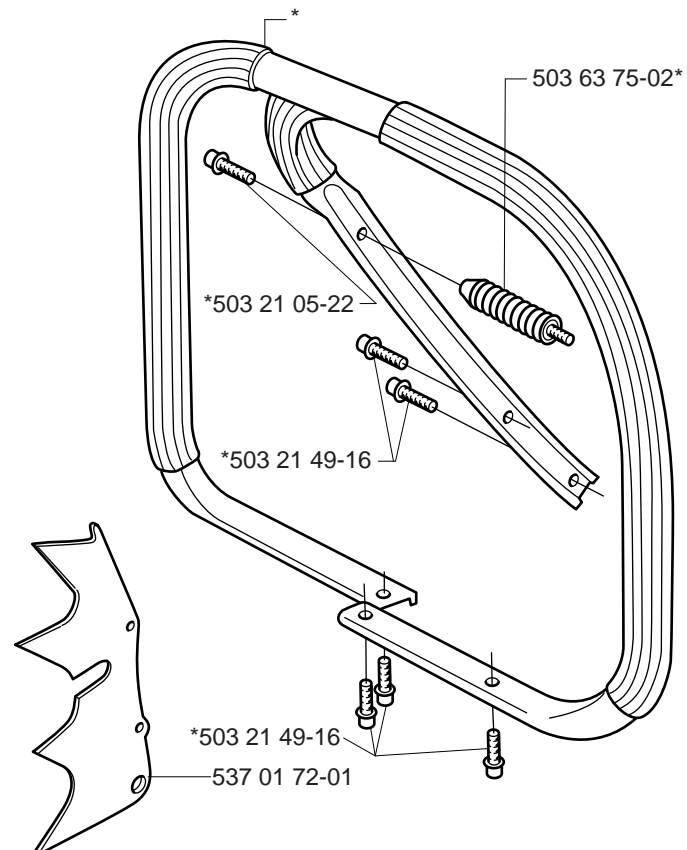
# K \*compl 503 71 32-75



# L \*compl 503 62 67-71



# M \*compl 503 62 86-71 WRAP \*compl 503 62 86-02 WA G





**N**

\*compl 537 08 72-01 (G)

(G) \*537 07 13-01

(G) \*537 06 04-01

537 07 18-02 (G)

503 20 26-16 (G)

503 23 01-01

503 22 10-11

503 55 49-01\* (G)

537 07 14-01\* (G)

501 67 35-01

503 23 00-42

537 01 55-01

501 81 99-01

(G) 501 43 00-01

(G) \*503 23 85-65

compl 537 05 16-06 (G)

\*compl 537 01 59-01 (G)

\*503 64 02-01 (G)

501 80 24-03 (G)

503 20 26-16 (G)

503 23 01-01

503 22 10-11

501 43 00-01\* (G)

\* (G)

501 67 35-01

503 23 00-42

537 01 55-01

501 81 99-01

compl 537 05 16-04 (G)

503 21 38-01 (G)

501 48 54-02

503 71 82-01

503 70 59-01 (G)

503 62 61-01

503 89 76-01

\*compl 503 62 67-72 (G)

503 21 28-10

\*503 21 05-22

503 23 01-01

503 22 10-11

503 68 45-02\* (G)

503 21 49-16\*

537 16 22-04

537 27 74-01 COT

503 20 07-20 (x2)

501 67 35-01

503 23 00-42

537 01 55-01

501 81 99-01

compl 537 05 16-05

**P**

\*compl 503 62 81-71

503 62 83-01

503 54 39-01\*

501 20 15-02\*

\*503 21 49-16

\*503 23 43-02

\*503 85 96-01

\*503 78 72-01

\*503 20 34-19 (x4)

\*\*\*501 63 06-01

537 08 67-01\* \*\*

\*\*\*compl 503 62 82-02 \*\*\*

(XP) 537 08 65-10 362

(XPG) 537 08 65-11 362

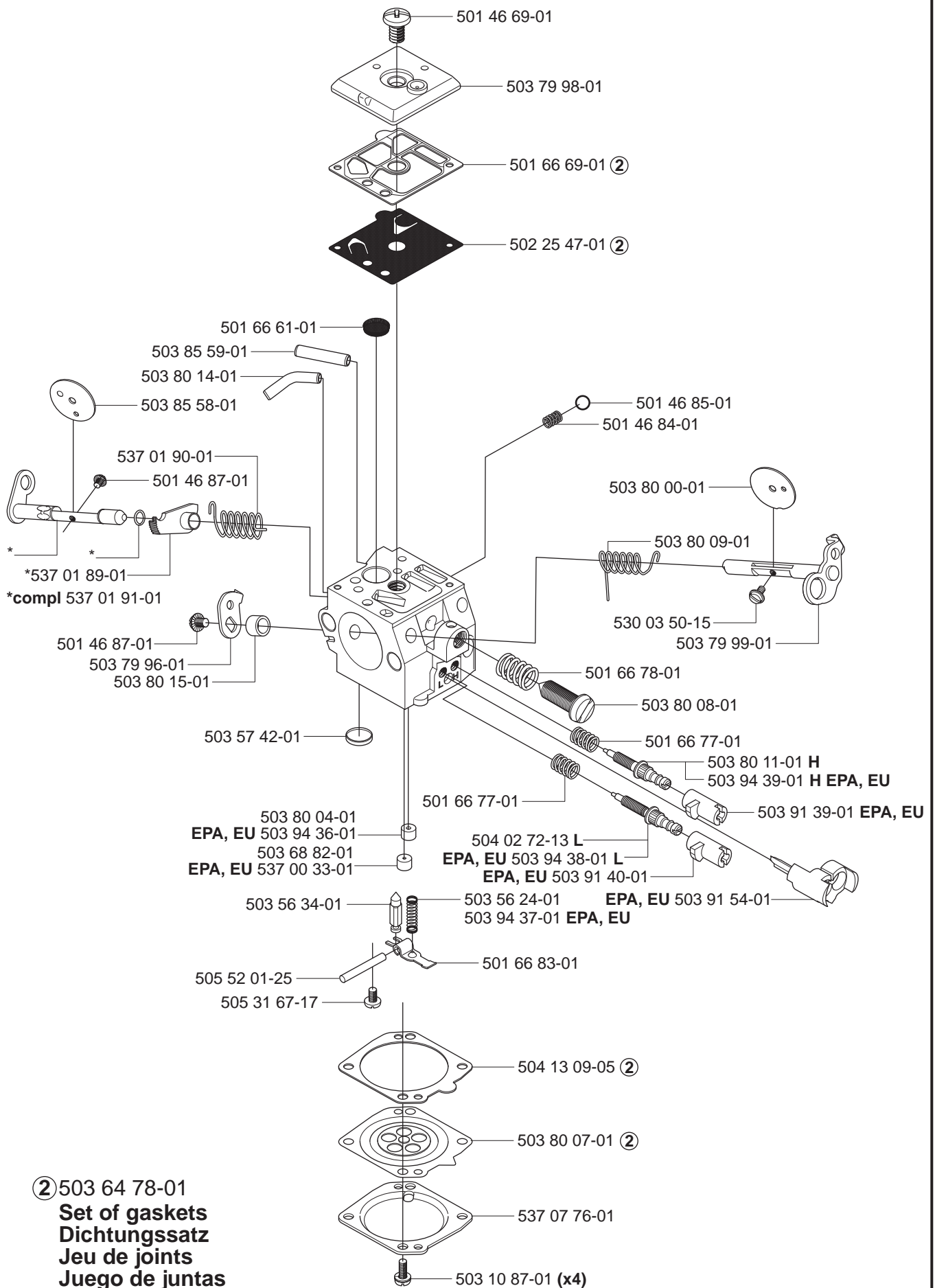
(XP) 537 23 02-01 372

(XPG) 537 23 02-06 372



compl 503 28 18-04  
compl 503 28 18-05 EPA, EU

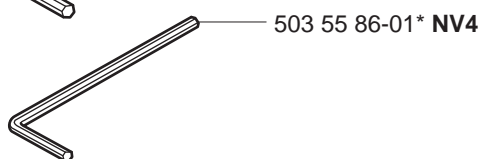
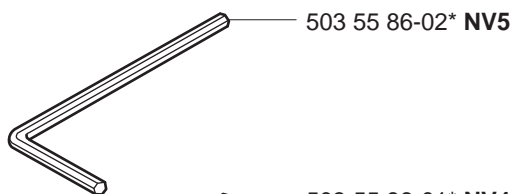
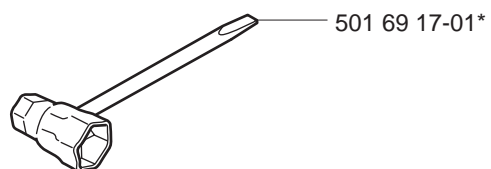
# Walbro HD-6B Walbro HD-12B EPA, EU



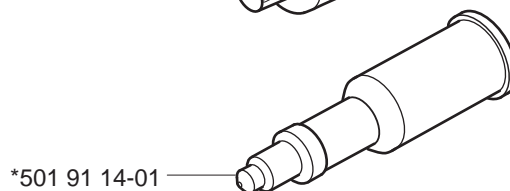
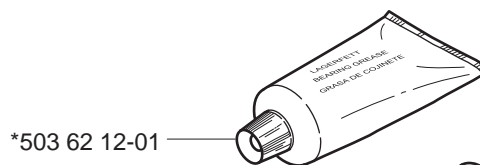
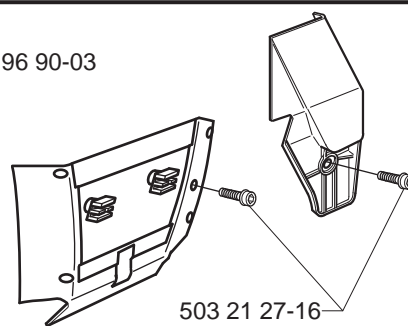
② 503 64 78-01  
**Set of gaskets**  
**Dichtungssatz**  
**Jeu de joints**  
**Juego de juntas**  
**Packningssats**



**R** Accessories  
 Zubehöre  
 Accessories  
 Accesorios  
 Tillbehör  
 \*compl 503 55 85-01



**WINTER**  
 compl 503 96 90-03



PART NUMBER	SQUARE	NOTE	PART NUMBER	SQUARE	NOTE	PART NUMBER	SQUARE	NOTE	PART NUMBER	SQUARE	NOTE
501 20 15-02	P		503 23 01-01	N		503 64 79-02	J		503 81 80-02	H	
501 27 08-01	J		503 23 43-02	P		503 66 53-01	H		503 81 80-03	H	
501 43 00-01	N		503 23 51-08	E		503 66 74-01	H	EPA, EU	503 82 98-01	K	
501 45 27-02	J		503 23 85-65	N		503 67 86-01	J		503 83 81-02	A	
501 45 41-01	J		503 25 56-01	E		503 68 41-01	H		503 84 01-01	C	
501 45 74-02	C		503 25 56-01	F		503 68 45-02	N		503 84 61-01	J	
501 46 69-01	Q		503 26 03-01	J		503 68 82-01	Q		503 85 58-01	Q	
501 46 84-01	Q		503 26 30-19	F		503 69 12-71	E		503 85 59-01	Q	
501 46 85-01	Q		503 27 21-01	C		503 69 14-71	E		503 85 73-01	J	
501 46 87-01	Q		503 28 18-04	H		503 70 04-01	B		503 85 96-01	P	
501 48 54-02	N		503 28 18-04	Q		503 70 11-01	H		503 89 56-01	K	
501 51 72-01	A,B		503 28 18-05	H	EPA, EU	503 70 59-01	N		503 89 56-02	K	
501 54 41-02	C		503 28 18-05	Q		503 70 99-01	A		503 89 70-01	A	
501 59 80-02	C		503 28 90-29	E		503 71 27-01	H		503 89 70-01	B	
501 61 58-01	C		503 28 90-36	E	EPA, EU	503 71 32-75	K		503 89 76-01	N	
501 63 06-01	P		503 28 90-42	E		503 71 53-01	E		503 91 39-01	Q	EPA, EU
501 66 61-01	Q	2	503 40 06-06	H		503 71 76-01	K		503 91 40-01	Q	EPA, EU
501 66 69-01	Q		503 42 67-01	C		503 71 82-01	N		503 91 54-01	Q	EPA, EU
501 66 77-01	Q		503 43 18-01	H		503 71 97-01	A		503 92 27-01	A	
501 66 78-01	Q		503 43 20-01	C		503 73 44-01	J		503 93 28-01	J	
501 66 83-01	Q		503 43 65-01	A		503 73 54-01	H		503 93 92-71	E	EPA, EU
501 67 35-01	N		503 44 32-01	K		503 73 64-01	K		503 93 93-72	E	EPA, EU
501 68 68-01	J		503 52 13-03	C		503 74 01-02	D		503 93 95-71	C	
501 69 17-01	R		503 52 15-01	C		503 74 43-01	C		503 94 36-01	Q	EPA, EU
501 80 24-03	N		503 53 92-01	C		503 74 44-01	C		503 94 37-01	Q	EPA, EU
501 81 57-01	J		503 54 39-01	P		503 74 44-01	F		503 94 38-01	Q	EPA, EU
501 81 99-01	N		503 55 22-01	E		503 74 87-03	F		503 94 39-01	Q	EPA, EU
501 87 31-01	K		503 55 49-01	N		503 74 93-01	J		503 96 15-01	E	1
501 87 53-03	A		503 55 66-01	K		503 75 11-03	A		503 96 45-01	H	
501 91 14-01	R		503 55 85-01	R		503 75 18-01	J		503 96 52-71	E	
502 20 65-04	H	2	503 55 86-01	R		503 75 22-02	A		503 96 70-01	J	
502 20 83-02	H		503 55 86-02	R		503 75 24-01	C		503 96 90-03	R	
502 25 47-01	Q		503 56 00-04	H		503 75 61-02	C		503 98 74-01	D	
503 10 87-01	Q		503 56 24-01	Q		503 76 29-02	A		503 99 83-01	A	
503 20 02-16	G,J		503 56 34-01	Q		503 76 29-02	B		504 02 72-13	Q	2
503 20 06-08	G		503 57 42-01	Q		503 76 49-03	A		504 13 09-05	Q	
503 20 07-12	A,J		503 57 76-02	K		503 76 52-01	G		504 30 00-26	C	
503 20 07-20	N		503 57 89-01	J		503 76 53-01	G		505 27 57-19	J	
503 20 07-30	J		503 57 89-01	K		503 76 53-02	G		505 30 36-61	C	
503 20 08-32	J		503 60 04-01	K		503 76 54-02	G		505 31 67-17	Q	
503 20 25-12	A		503 62 12-01	R		503 76 64-02	G		505 52 01-25	Q	
503 20 26-16	N		503 62 49-01	C		503 76 65-03	G		530 03 50-15	Q	
503 20 34-19	P		503 62 61-01	N		503 76 92-01	B		537 00 33-01	Q	EPA, EU
503 20 34-25	D		503 62 64-73	E		503 77 43-01	C		537 00 87-01	A	
503 21 05-22	L,M		503 62 67-71	L		503 77 52-01	A		537 01 55-01	N	
503 21 05-22	N		503 62 67-72	N		503 77 58-02	E		537 01 55-01	N	
503 21 27-16	R		503 62 68-76	J		503 77 59-01	E	1	537 01 55-01	N	
503 21 28-10	A,B,J,N		503 62 72-01	J	1	503 77 91-01	F		537 01 59-01	N	
503 21 38-01	N		503 62 73-03	J		503 78 72-01	P		537 01 65-01	D	
503 21 49-16	L		503 62 75-01	H		503 79 27-01	A		537 01 68-01	A	
503 21 49-16	L		503 62 77-01	J		503 79 96-01	Q		537 01 71-01	J	
503 21 49-16	M		503 62 78-07	D		503 79 98-01	Q		537 01 72-01	M	
503 21 49-16	M		503 62 78-08	D		503 79 99-01	Q		537 01 74-01	A	
503 21 49-16	N		503 62 80-01	D		503 80 00-01	Q		537 01 89-01	Q	
503 21 49-16	P		503 62 81-71	P		503 80 04-01	Q		537 01 90-01	Q	
503 22 00-01	A		503 62 82-02	P		503 80 07-01	Q	2	537 01 91-01	Q	
503 22 10-11	N		503 62 83-01	P		503 80 08-01	Q		537 02 44-01	J	
503 22 10-11	N		503 62 84-01	J		503 80 09-01	Q		537 03 35-01	A	
503 22 10-11	N		503 62 86-02	M		503 80 11-01	Q		537 03 35-71	A	
503 22 24-01	J		503 62 86-71	M		503 80 14-01	Q		537 03 38-03	A	
503 22 65-03	H		503 63 75-02	L		503 80 15-01	Q		537 03 62-05	C	
503 23 00-04	C		503 63 75-02	M		503 80 24-01	J		537 03 62-06	C	
503 23 00-42	N		503 63 75-03	L		503 81 13-01	C		537 04 03-01	J	
503 23 00-42	N		503 63 76-01	K		503 81 30-01	C		537 04 29-01	J	
503 23 00-42	N		503 63 76-02	K		503 81 45-01	H		537 04 41-02	A	
503 23 00-59	C		503 63 79-76	J		503 81 45-02	H		537 04 66-01	J	
503 23 00-63	A		503 64 02-01	N		503 81 45-03	H		537 05 16-04	N	
503 23 00-66	A		503 64 47-01	C		503 81 77-01	D		537 05 16-05	N	
503 23 01-01	N		503 64 72-01		1 compl	503 81 78-01	H		537 05 16-06	N	
503 23 01-01	N		503 64 78-01	Q	2 compl	503 81 80-01	H		537 06 04-01	N	

1 = 503 64 72-01  
2 = 503 64 78-01

Set of gaskets, Dichtungssats,  
Jeu de joints, Juego de juntas,  
Packningssats

EPA = Environmental Protection Agency (for USA only)  
EU = European Union

PART NUMBER	SQUARE	NOTE	PART NUMBER	SQUARE	NOTE	PART NUMBER	SQUARE	NOTE	PART NUMBER	SQUARE	NOTE
b537 07 13-01	N										
537 07 14-01	N										
537 07 18-02	N										
537 07 76-01	Q										
537 07 94-01	A										
537 07 95-01	A										
537 08 65-10	P										
537 08 65-11	P										
537 08 67-01	P										
537 08 72-01	N										
537 08 92-01	J										
537 09 54-01	J										
537 16 22-04	N										
537 21 50-01	J										
537 21 50-01	K										
537 21 52-02	J										
537 21 52-02	K										
537 23 02-01	P										
537 23 02-06	P										
537 27 74-01	N										
720 12 40-20	K										
720 12 72-20	K										
724 12 87-59	G										
725 53 05-55	H										
725 53 29-56	C										
725 53 31-55	J										
725 53 33-55	E										
725 53 70-55	G										
731 23 14-01	H										
737 43 12-00	E										
738 22 02-25	F										
738 22 02-25	F										
740 48 07-02	A										

1 = 503 64 72-01  
2 = 503 64 78-01

Set of gaskets, Dichtungssats,  
Jeu de joints, Juego de juntas,  
Packingssats

EPA = Environmental Protection Agency (for USA only)  
EU = European Union