

Rider 16

Spare parts

Ersatzteile

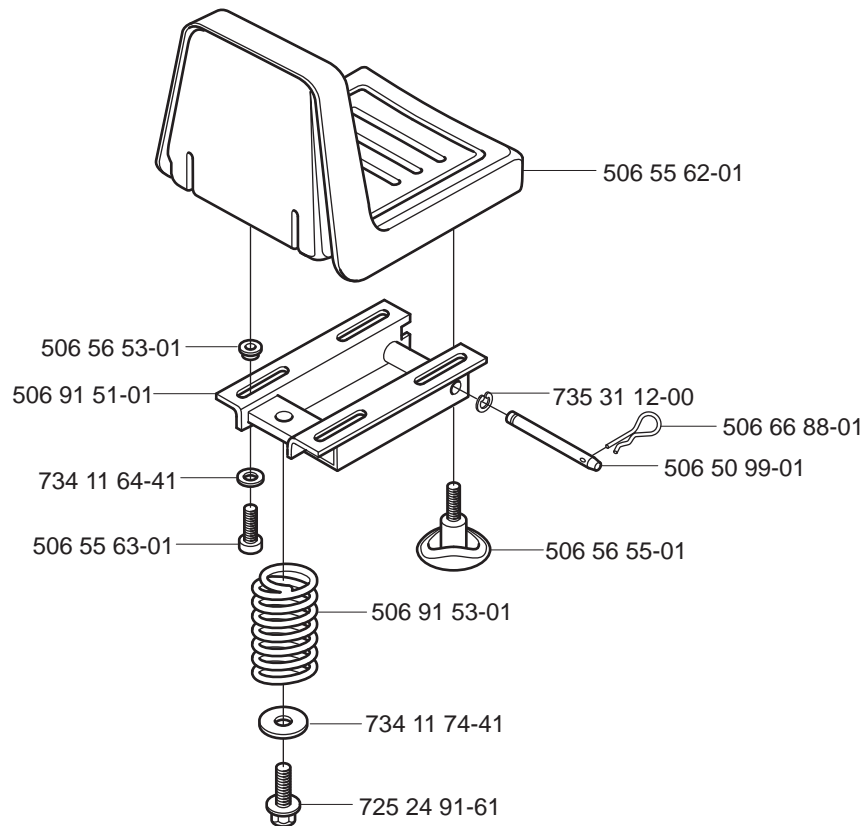
Pièces détachées

Reserve onderdelen

Repuestos

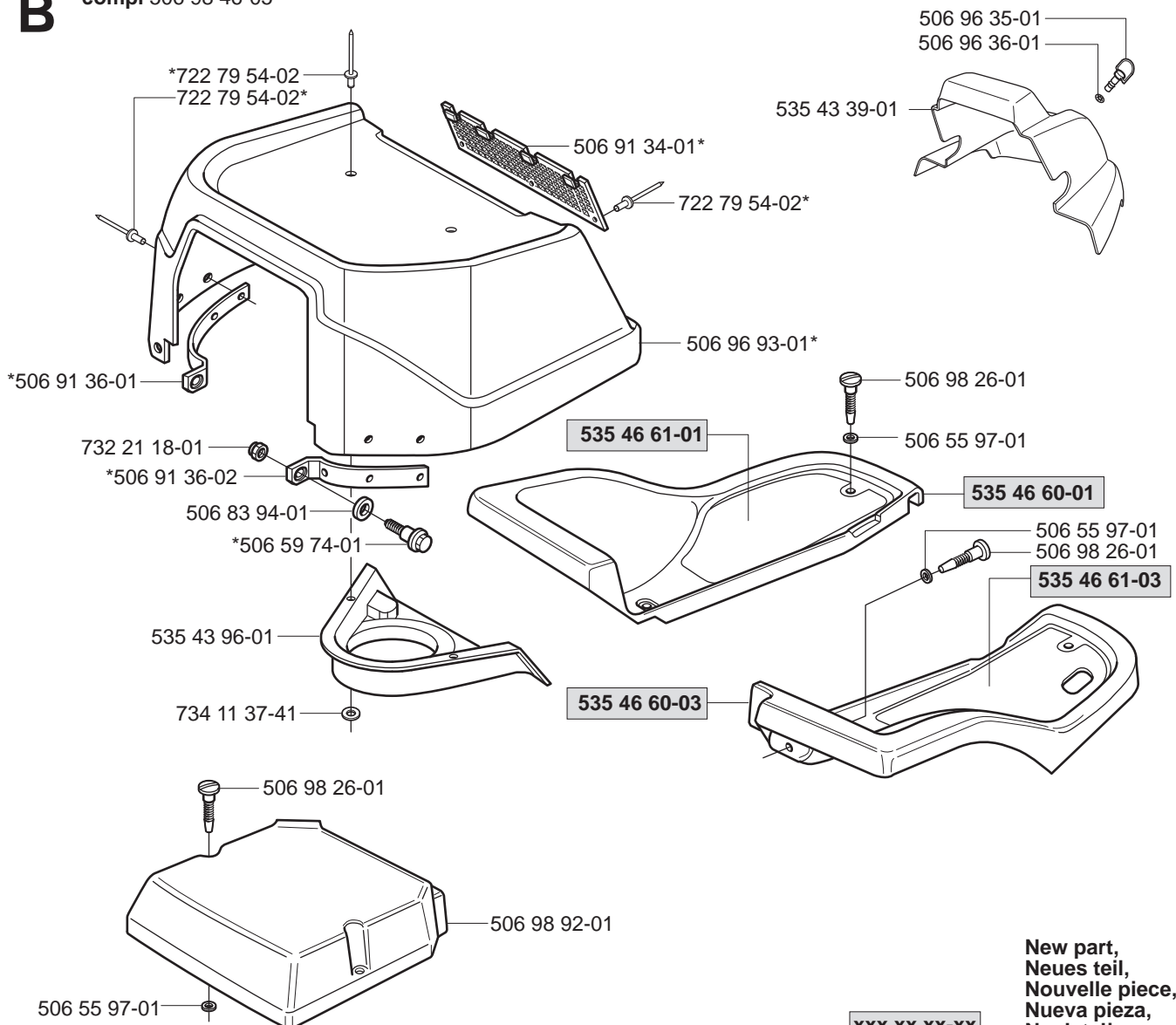
Reservdelar

A



B

*compl 506 98 46-05

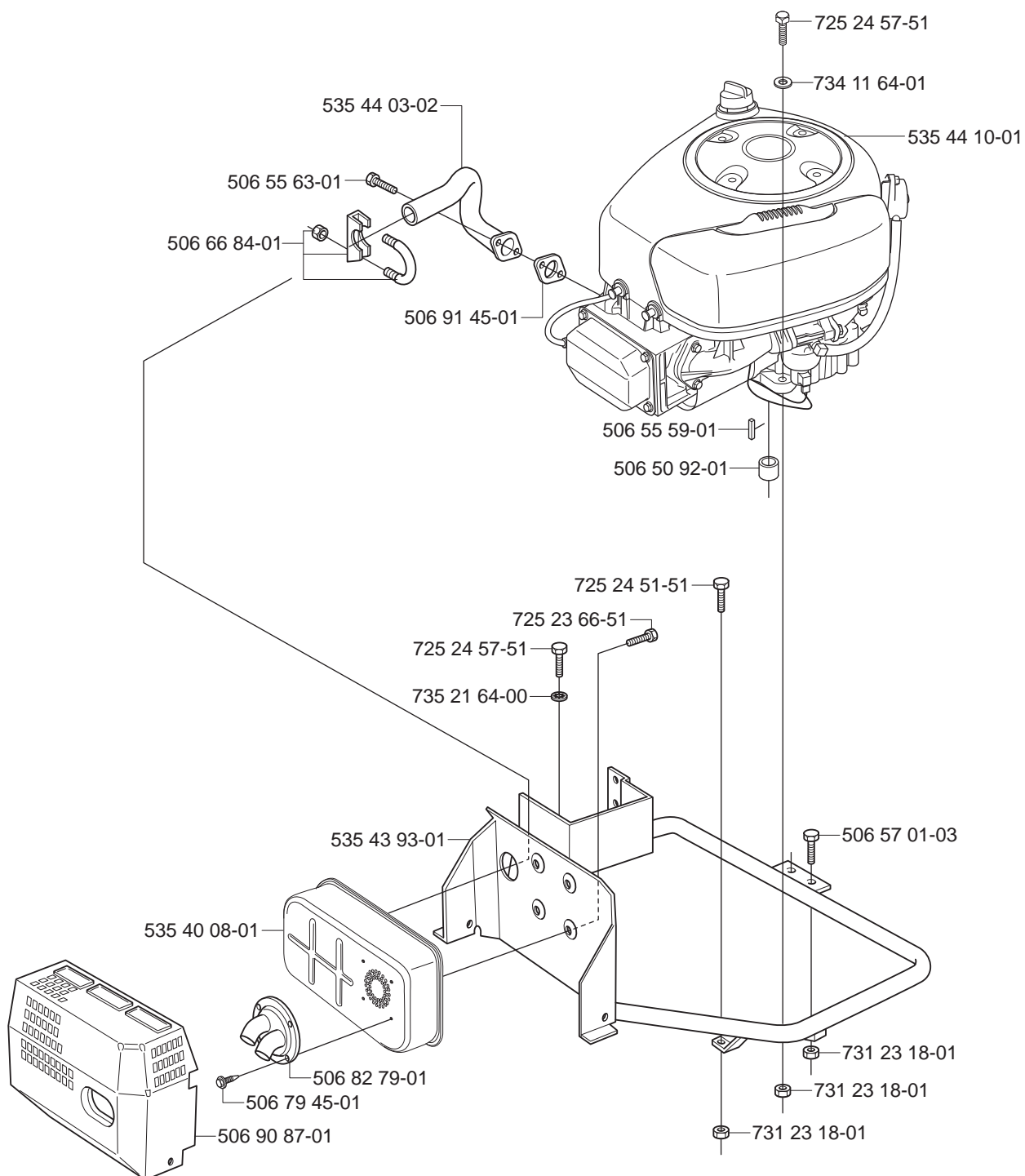


New part,
Neues teil,
Nouvelle piece,
Nueva pieza,
Ny detalj

xxx xx xx-xx

=

C

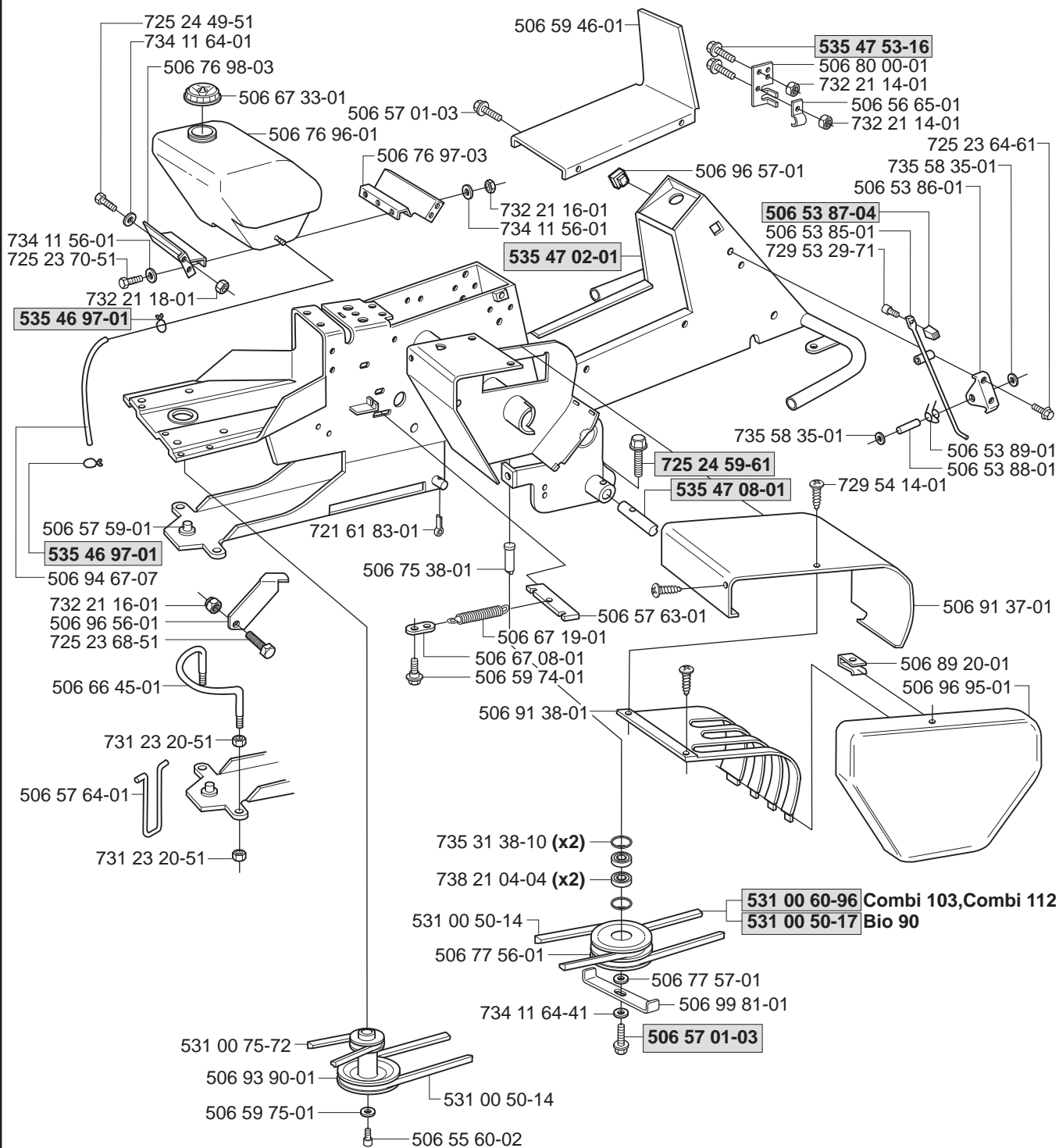


New part,
Neues teil,
Nouvelle piece,
Nueva pieza,
Ny detalj

xxx xx xx-xx

=

D

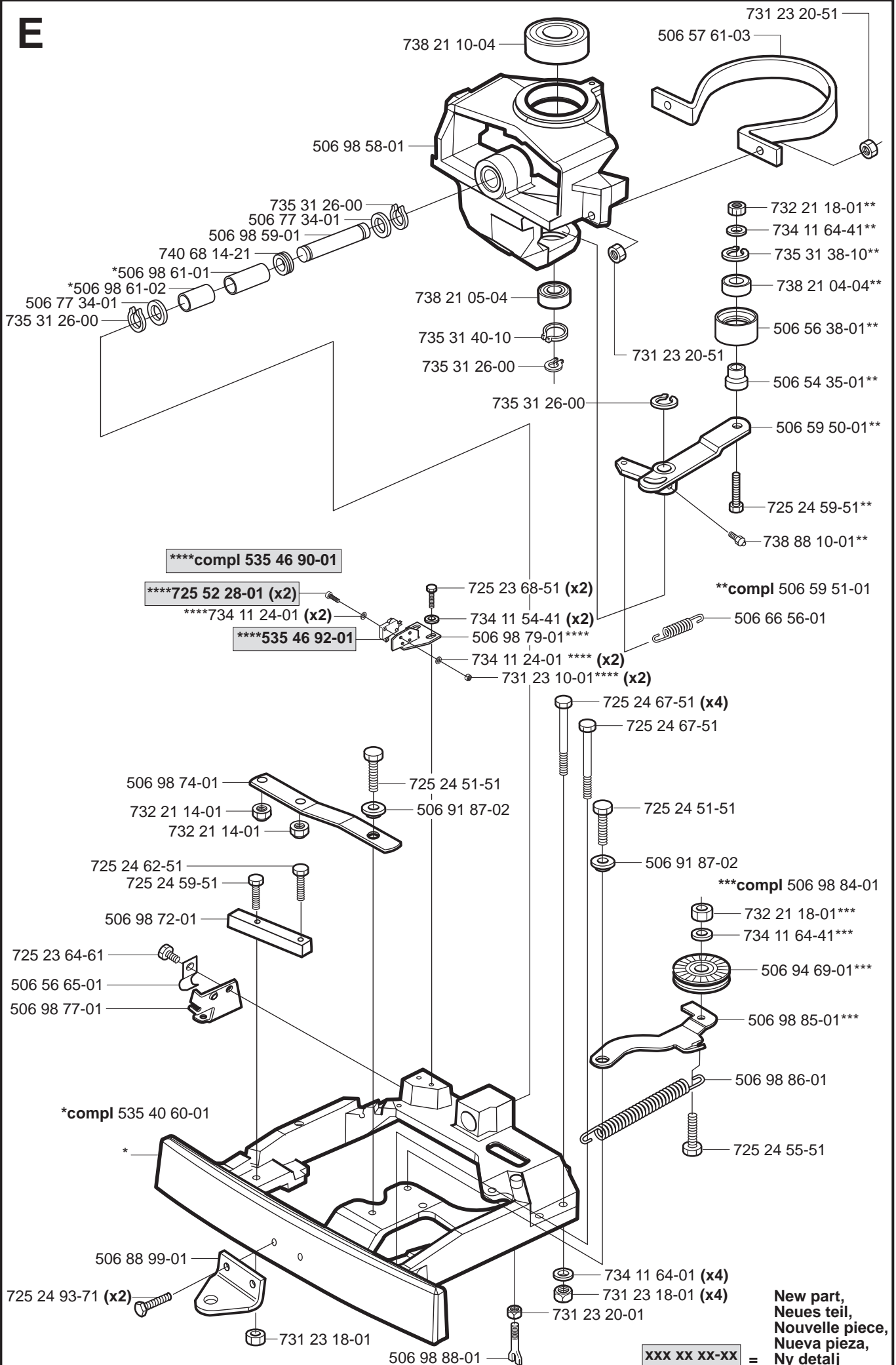


New part,
Neues teil,
Nouvelle piece,
Nueva pieza,
Ny detalj

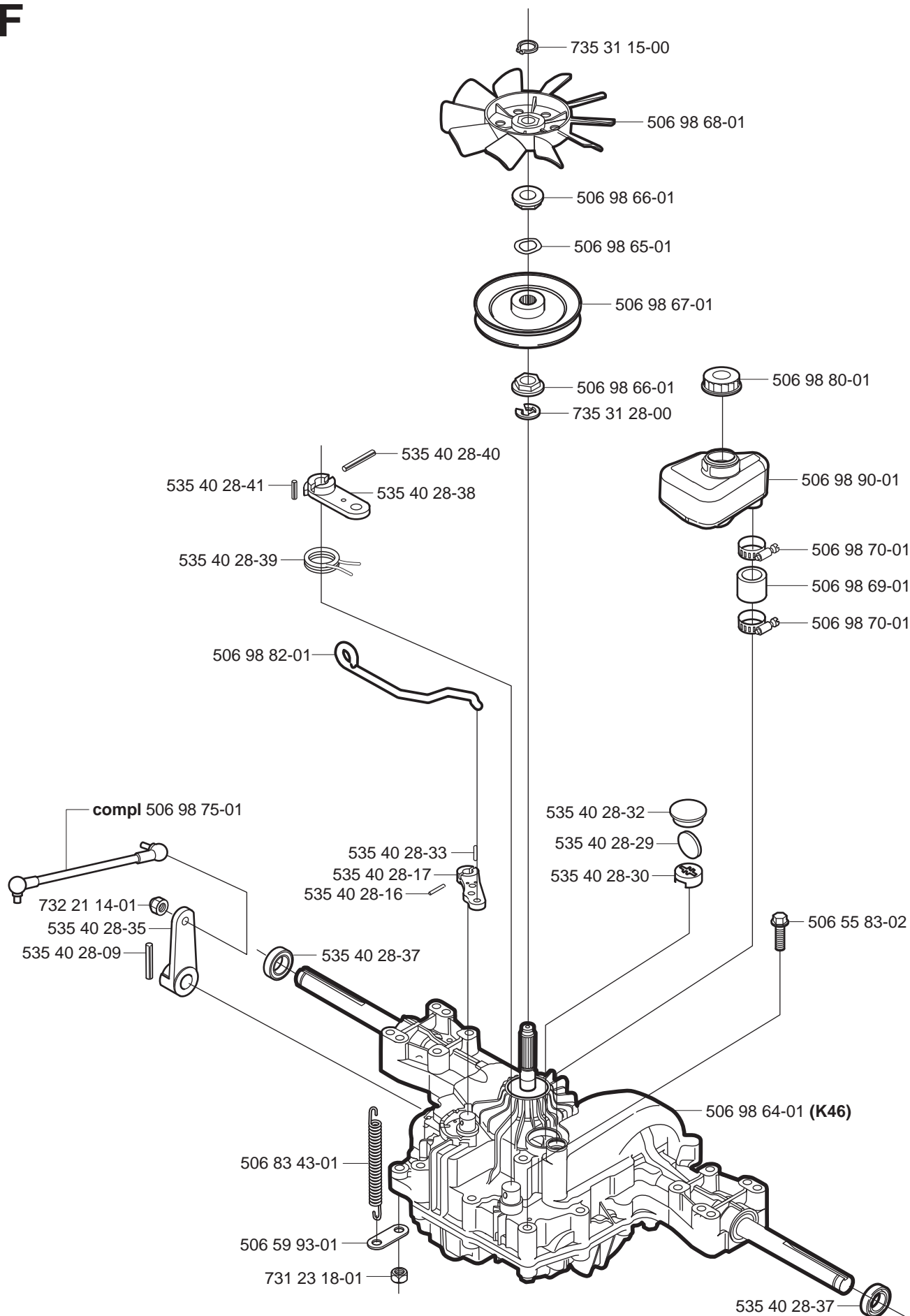
xxx xx xx-xx

=

E



F

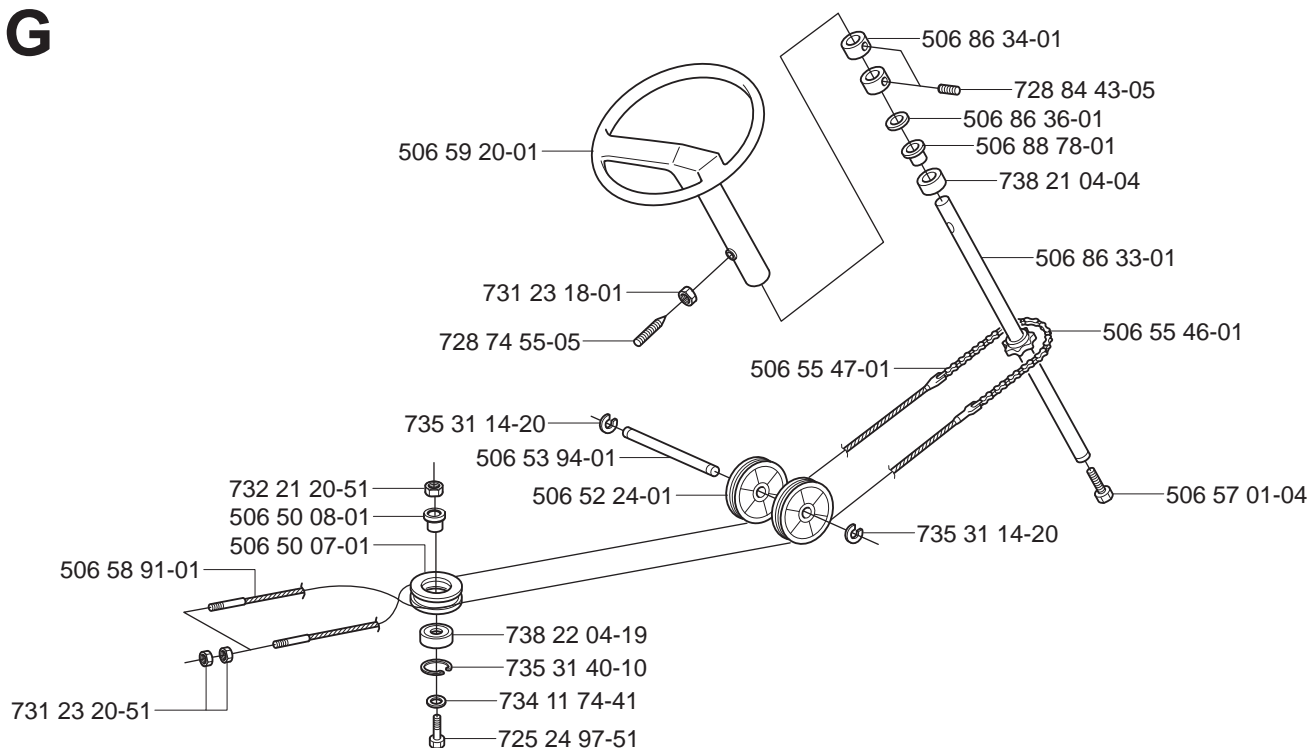


New part,
Neues teil,
Nouvelle piece,
Nueva pieza,
Ny detalj

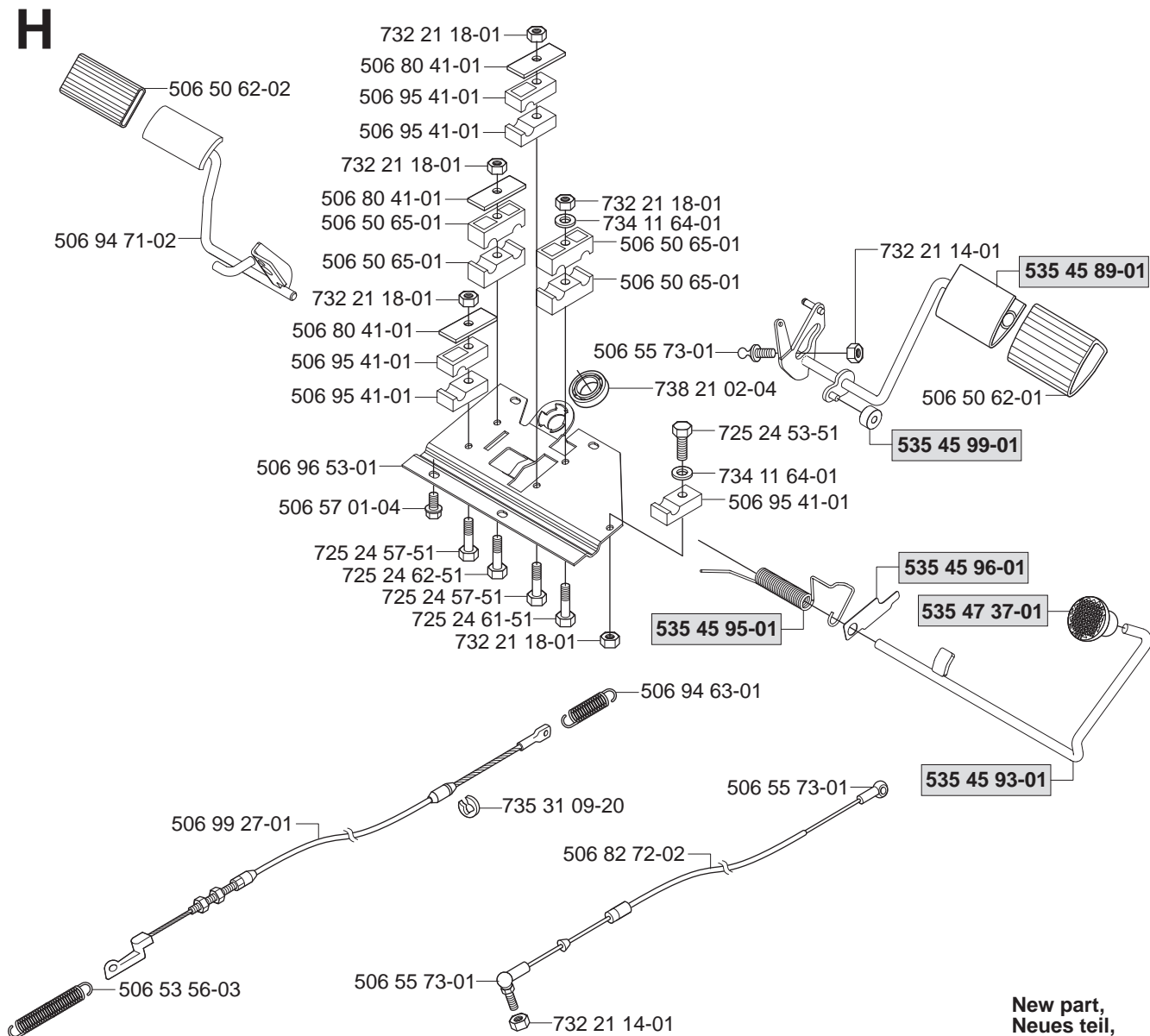
xxx xx xx-xx

=

G



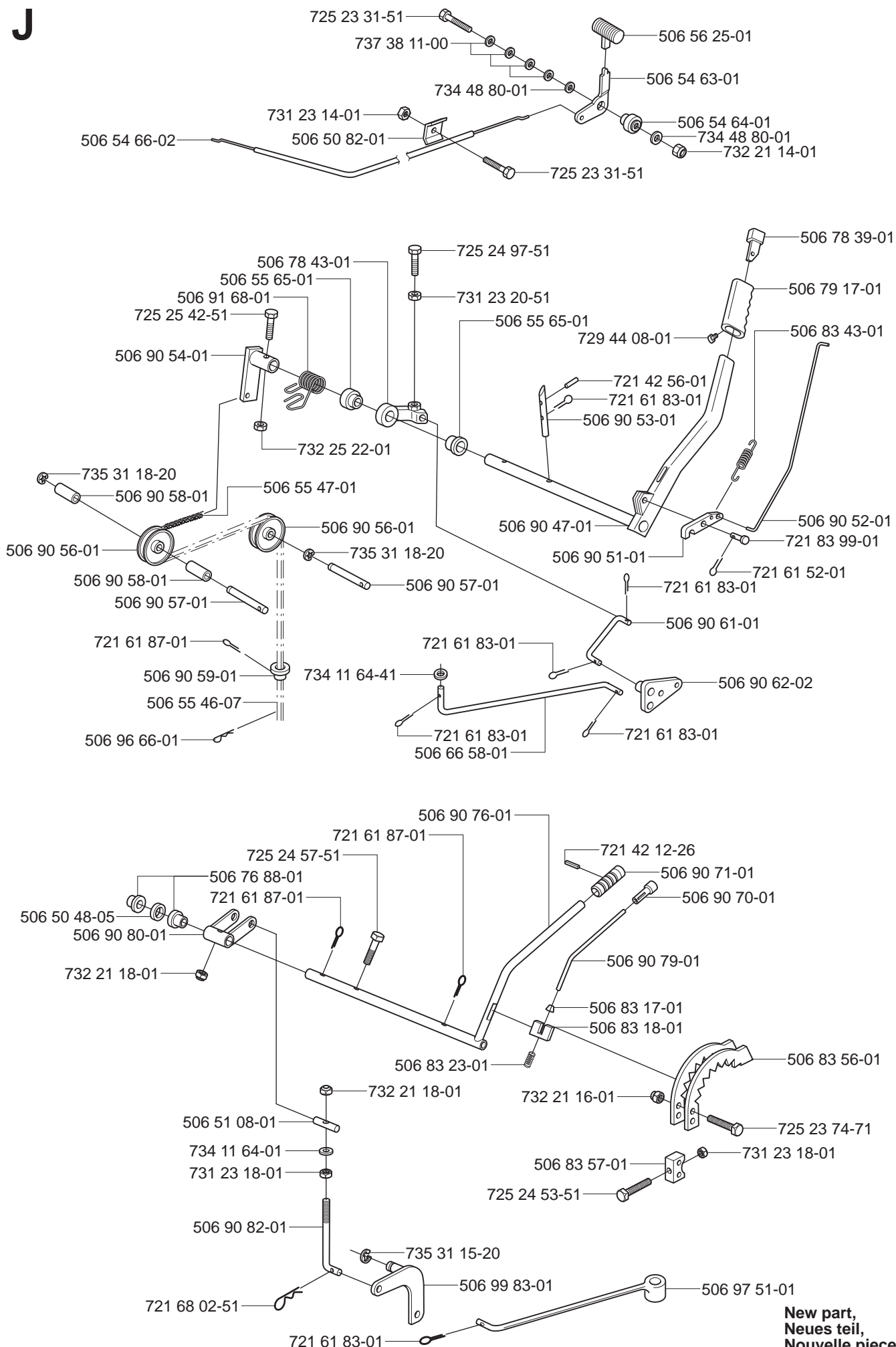
H



New part,
Neues teil,
Nouvelle piece,
Nueva pieza,
Ny detalj

xxx xx xx-xx =

J



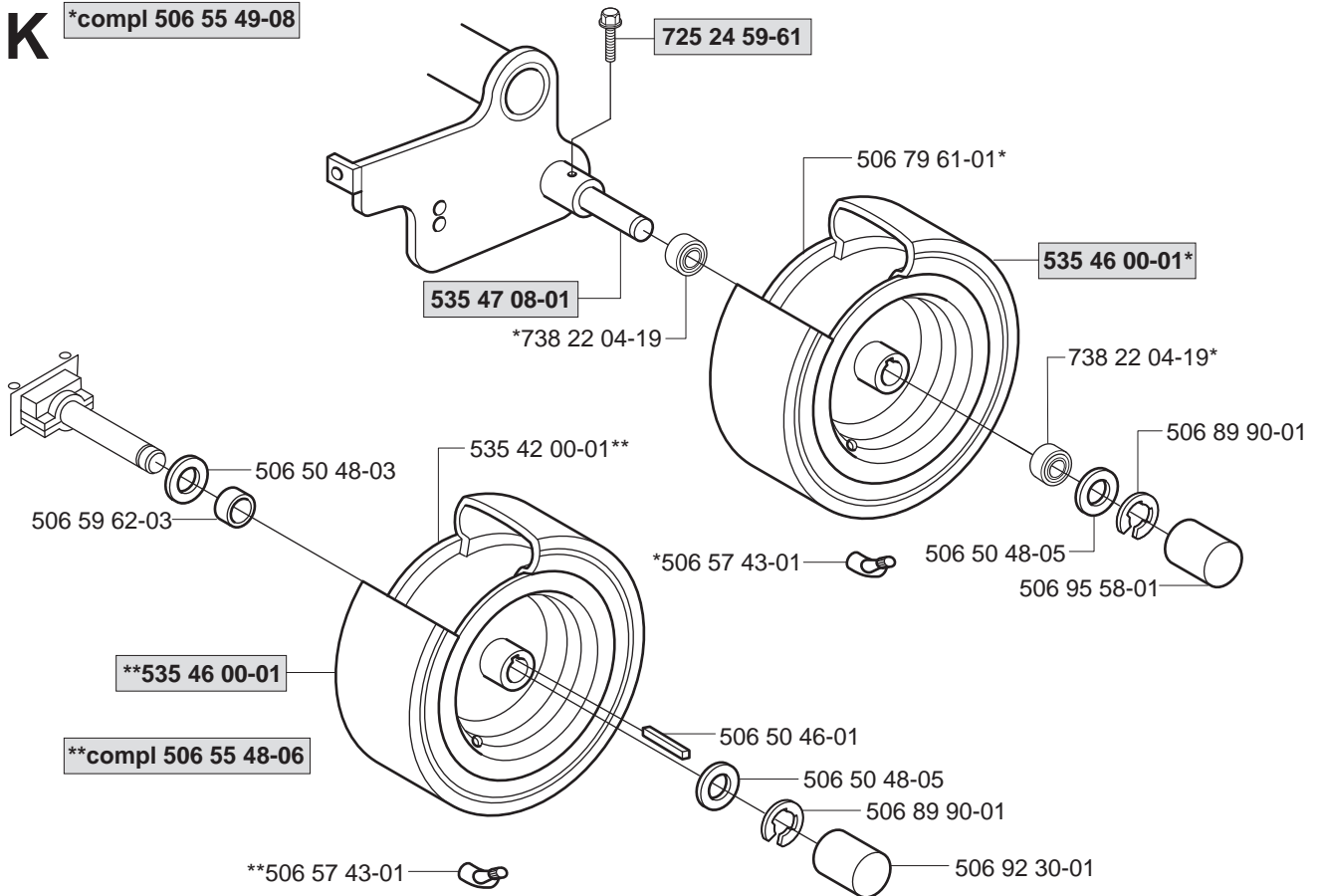
New part,
Neues teil,
Nouvelle piece,
Nueva pieza,
Ny detalj

xxx xx xx-xx

=

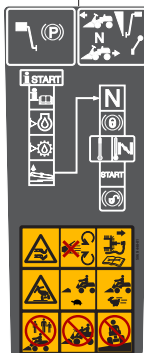
K

*compl 506 55 49-08



L

Warning
506 94 48-01



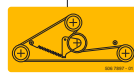
506 99 96-01



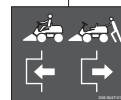
535 43 20-01



506 78 97-01



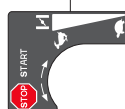
506 94 47-01



506 58 45-01



506 84 28-01



506 84 28-03



506 91 57-01



535 44 98-01

Husqvarna

535 44 99-01

Husqvarna

535 45 00-01



535 45 01-01 (x2)

Husqvarna

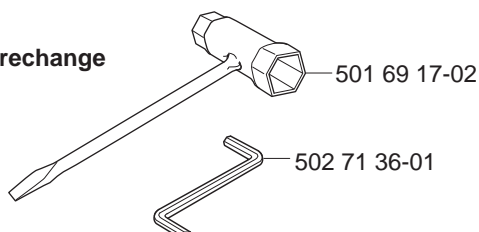
Husqvarna

535 44 97-01 **Rider 16**

Rider 16 535 44 97-02

M

Leverans endast som reservdel
Delivery as spare part only
Nur als Ersatzteil lieferbar
Livrabable seulement comme pièce de rechange
Solo como repuesto
Zasilá se jenom jako náhradni díl

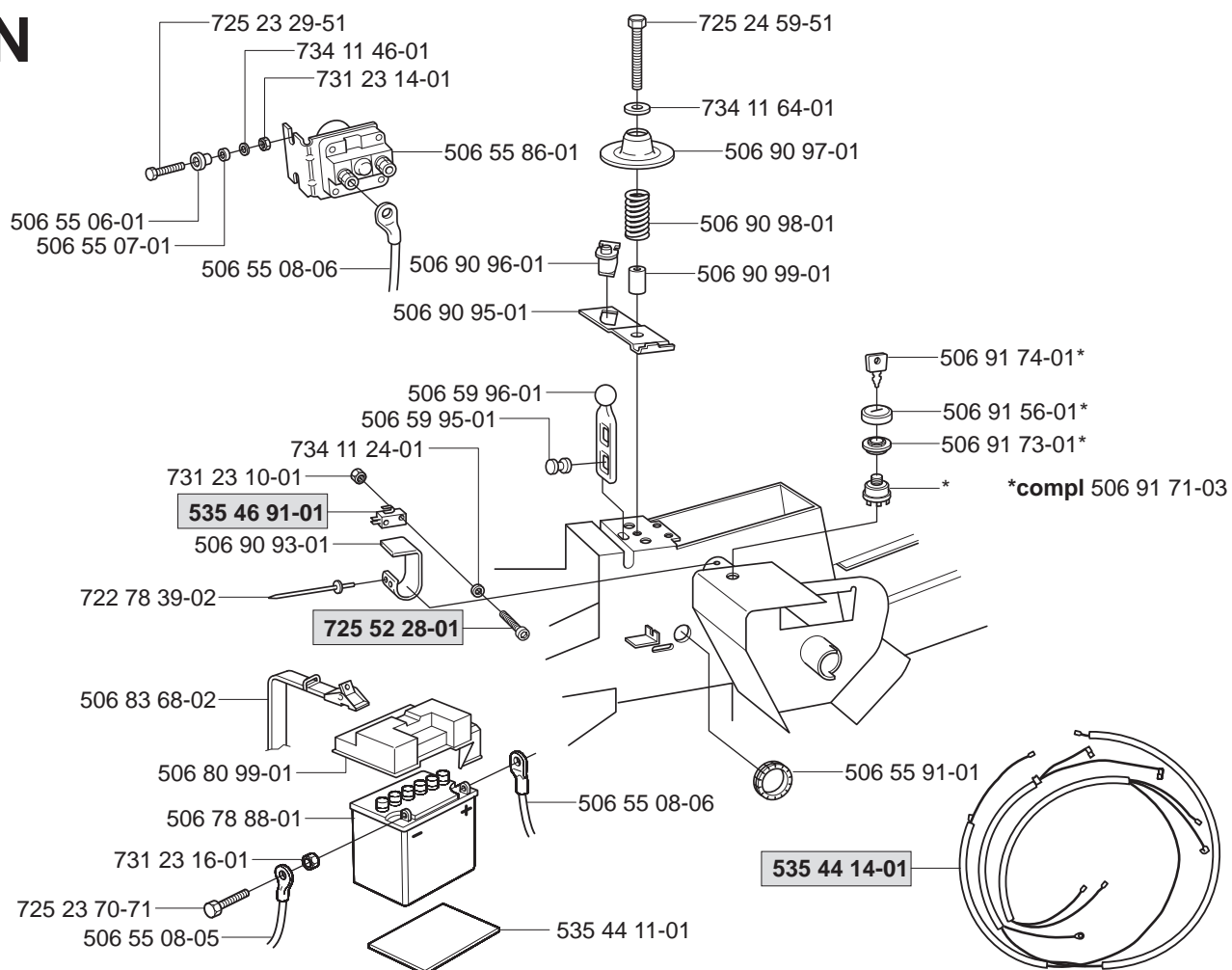


New part,
Neues teil,
Nouvelle piece,
Nueva pieza,
Ny detalj

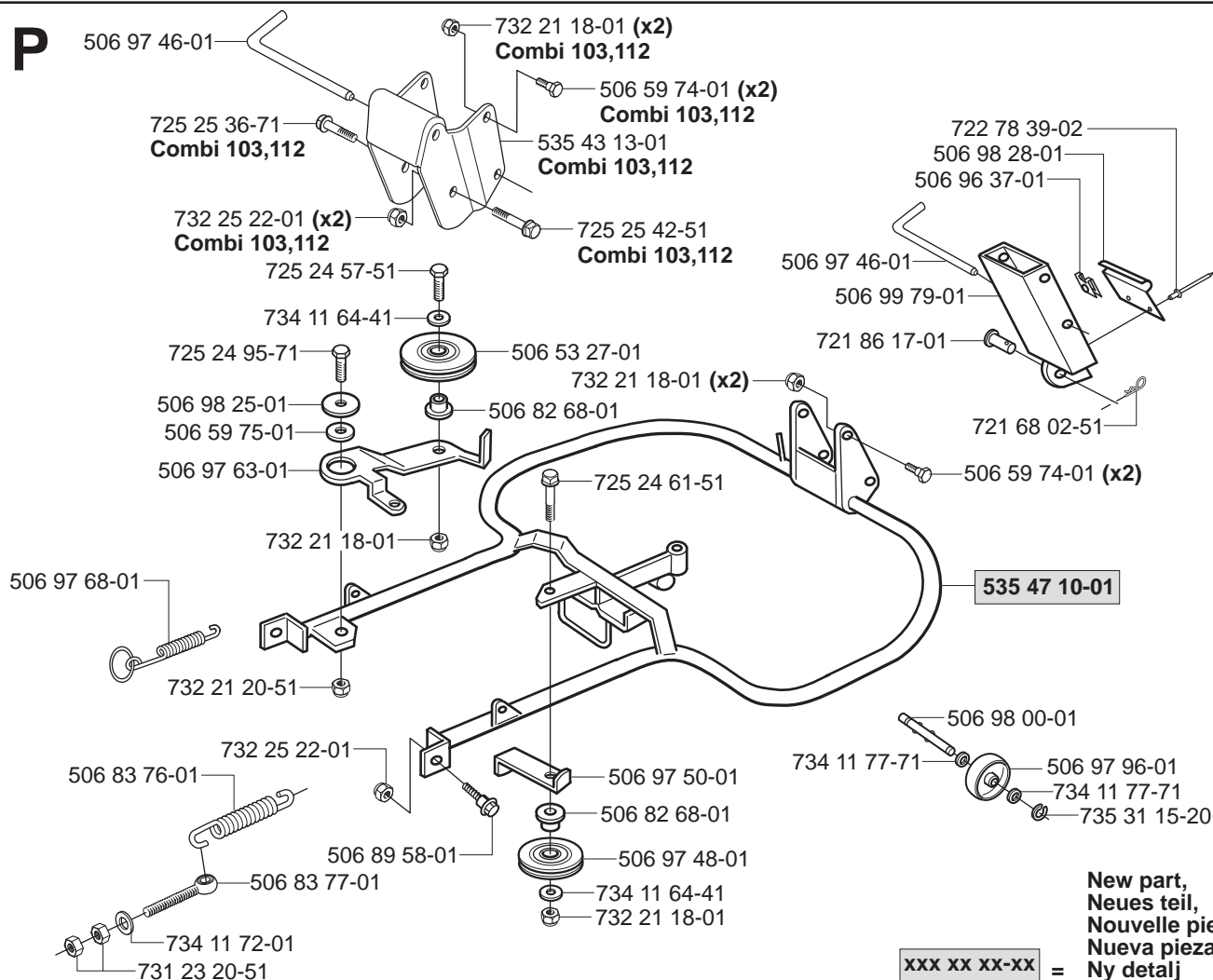
xxx xx xx-xx

=

N



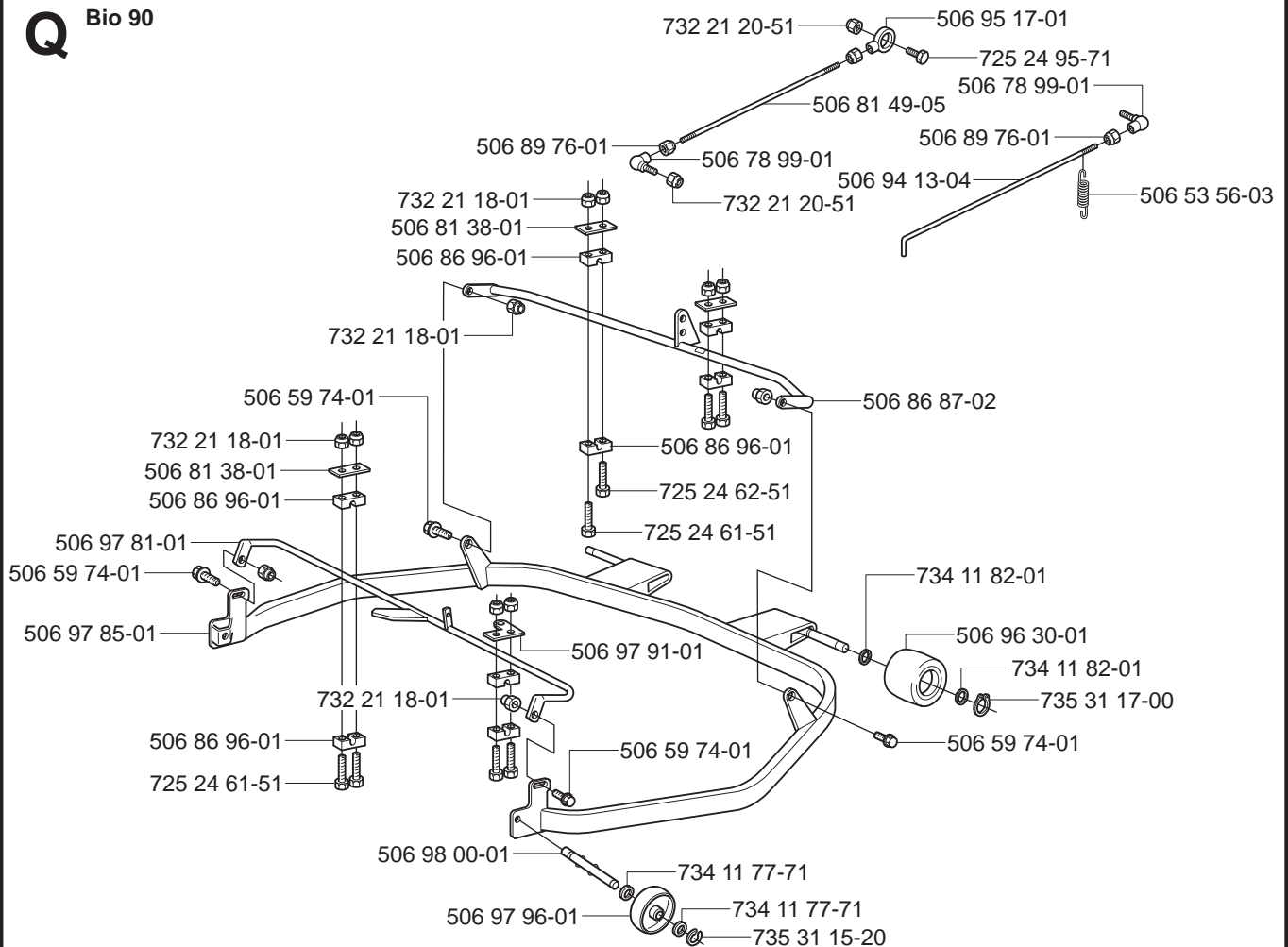
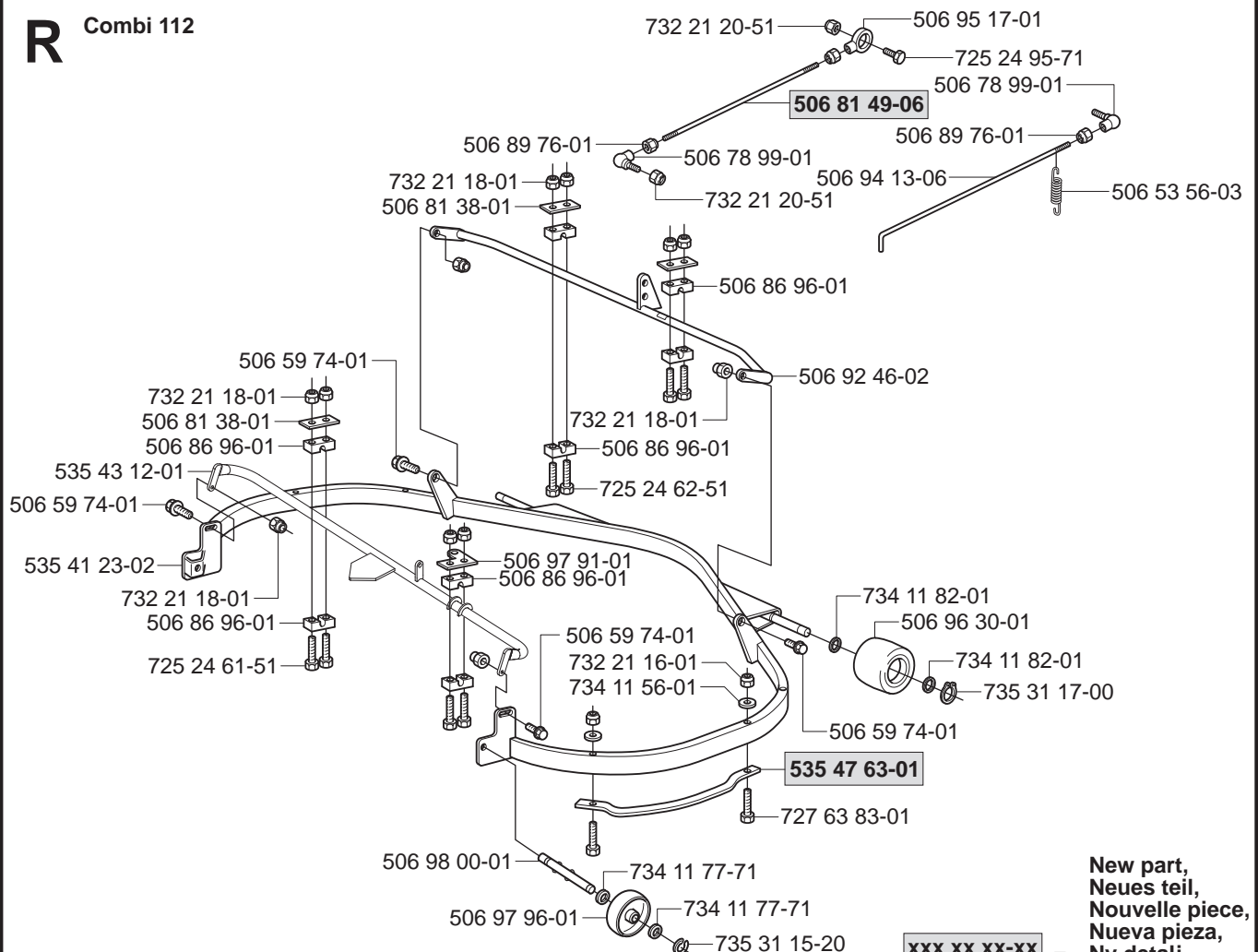
P



New part,
Neues teil,
Nouvelle piece,
Nueva pieza,
Ny detalj

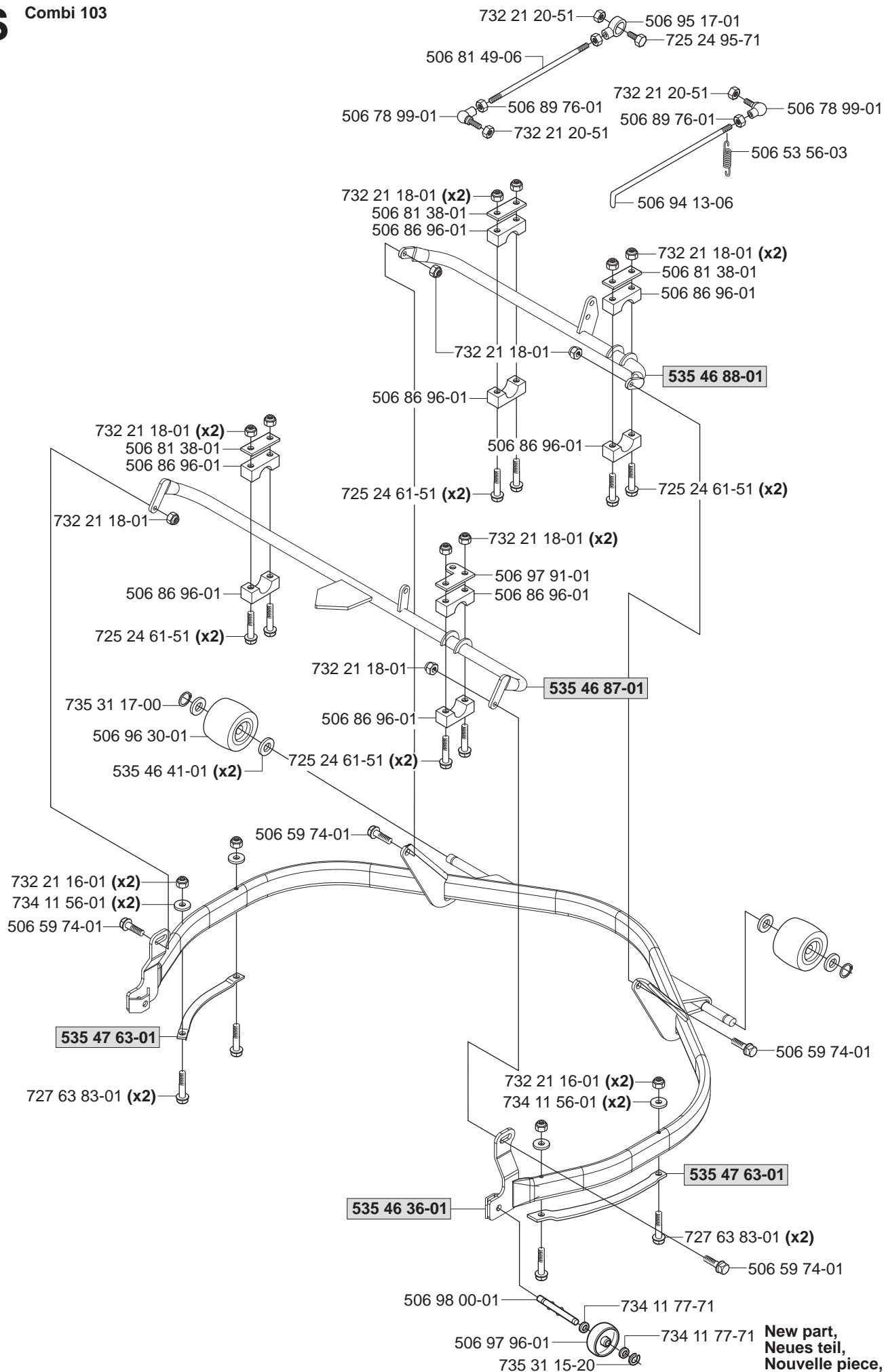
xxx xx xx-xx

=

Q**Bio 90****R****Combi 112**

New part,
Neues teil,
Nouvelle piece,
Nueva pieza,
Ny detalj

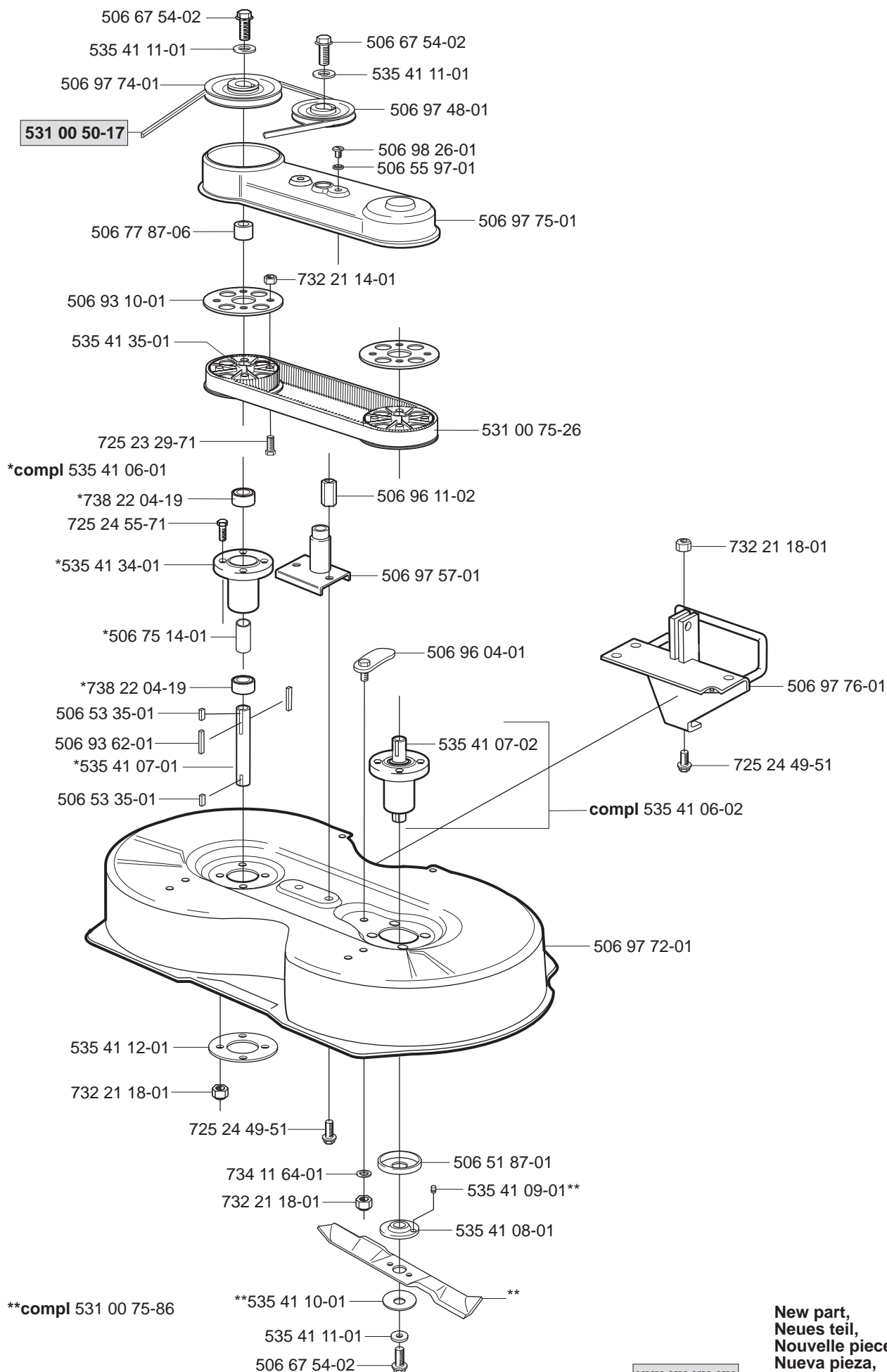
xxx xx xx-xx =



**New part,
Neues teil,
Nouvelle piece,
Nueva pieza,
Ny detalj**

T

Bio 90 compl 953 52 34-01

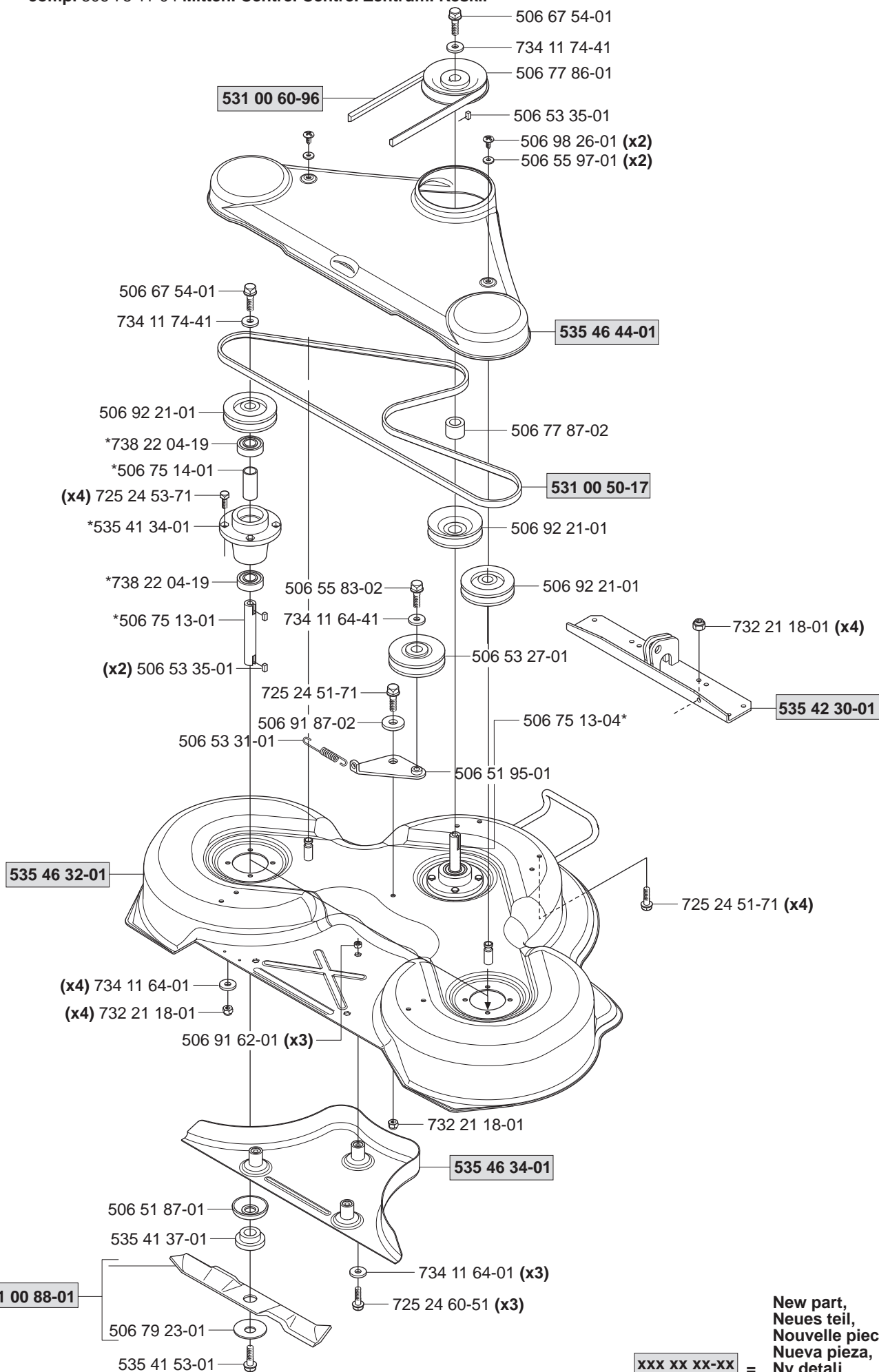


U

Combi 103 compl 953 52 47-01

***compl 506 75 11-01 Yttre. Outer. Extérieur. Äusser. Ulko.**

***compl 506 75 11-04 Mitten. Centre. Centre. Zentrum. Keski.**



New part,
Neues teil,
Nouvelle piece,
Nueva pieza,
Ny detalj

xxx xx xx-xx =

V

Combi 112 compl 953 52 44-01

*compl 506 75 11-01 Yttre. Outer. Extérieur. Äusser. Ulko.

*compl 506 75 11-04 Mitten. Centre. Centre. Zentrum. Keski.

