

# Rider 13

**Spare parts**

**Ersatzteile**

**Pièces détachées**

**Reserve onderdelen**

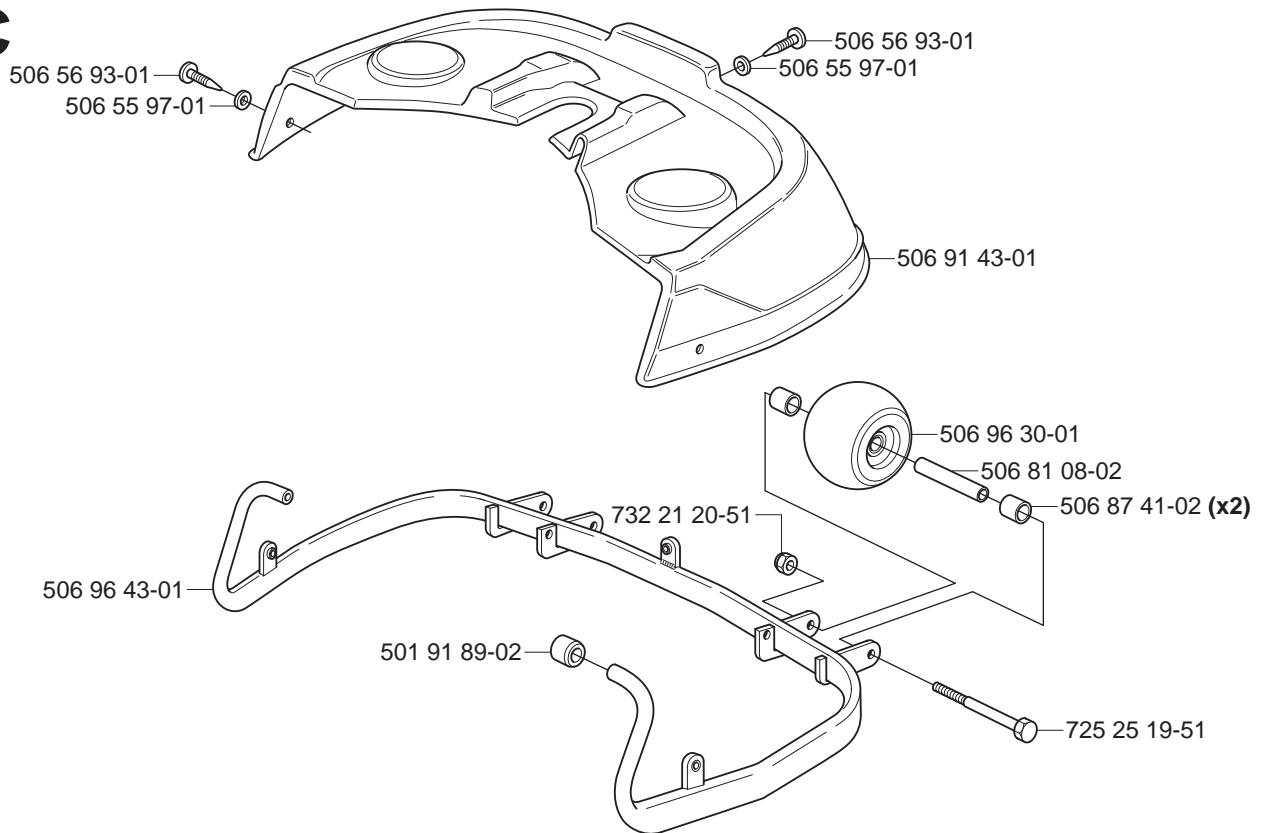
**Repuestos**

**Reservdelar**

[illegible]

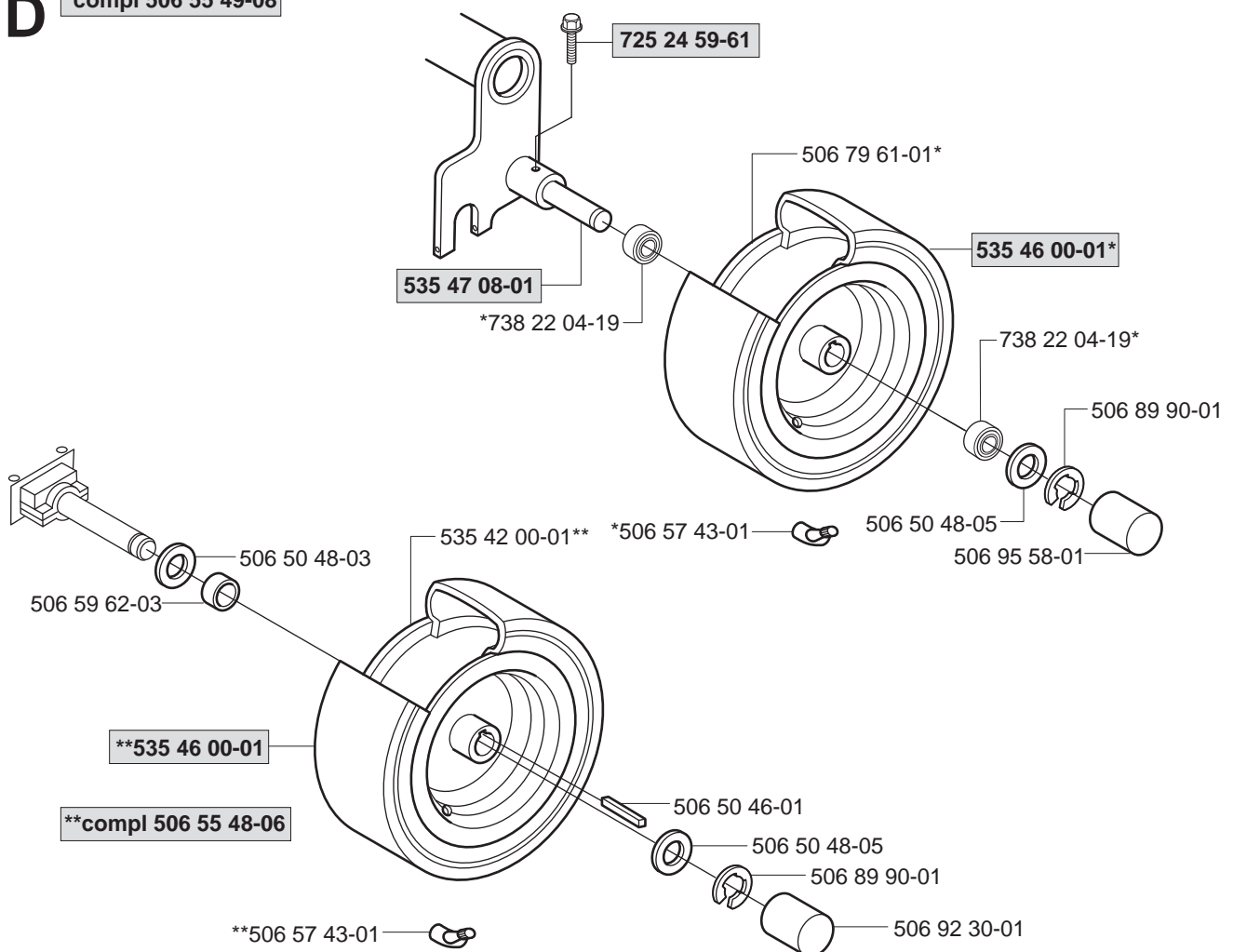
**xxx xx xx-xx** = New part,  
Neues teil,  
Nouvelle piece,  
Nueva pieza,  
Ny detalj

**C**



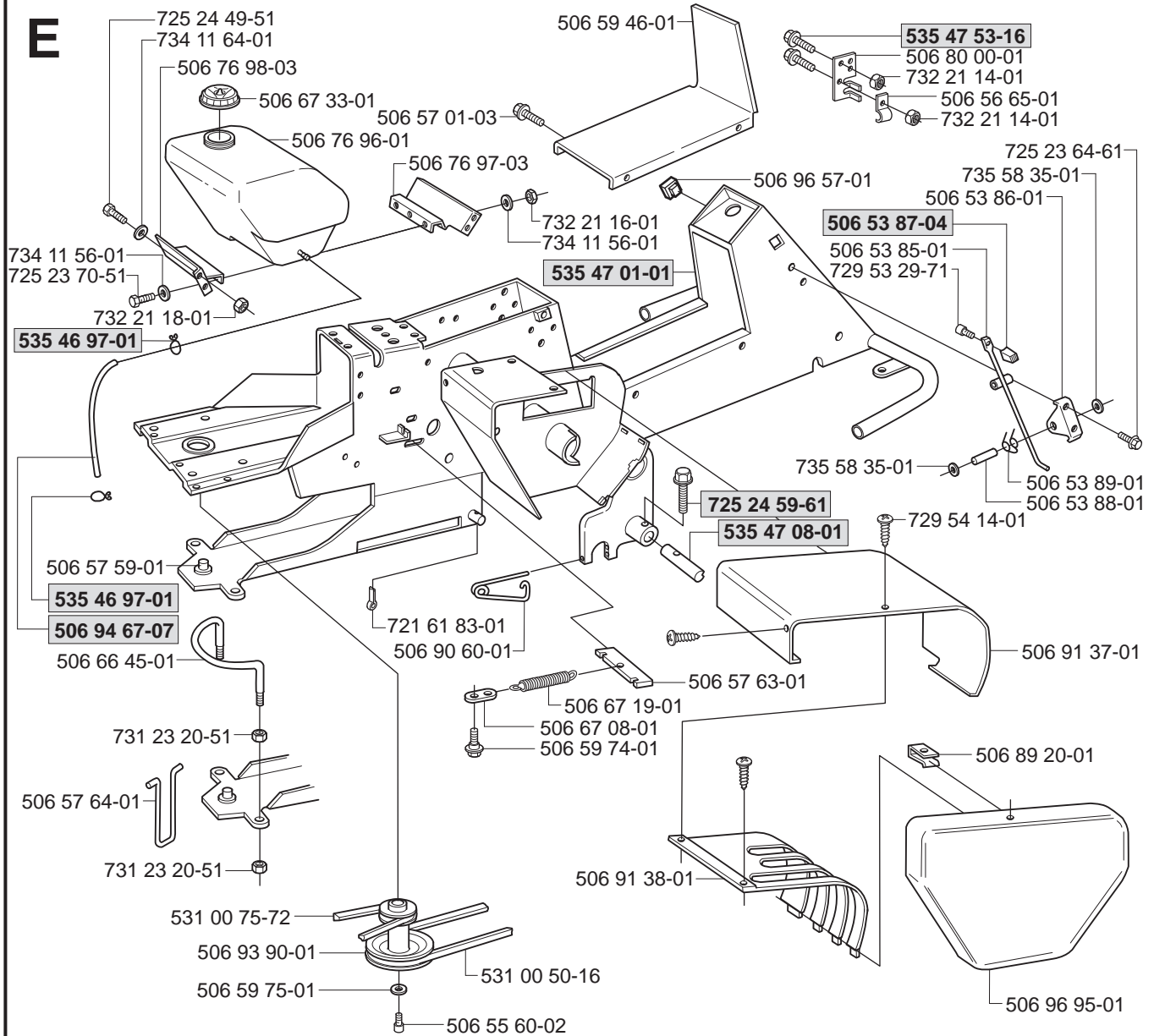
**D**

**\*compl 506 55 49-08**

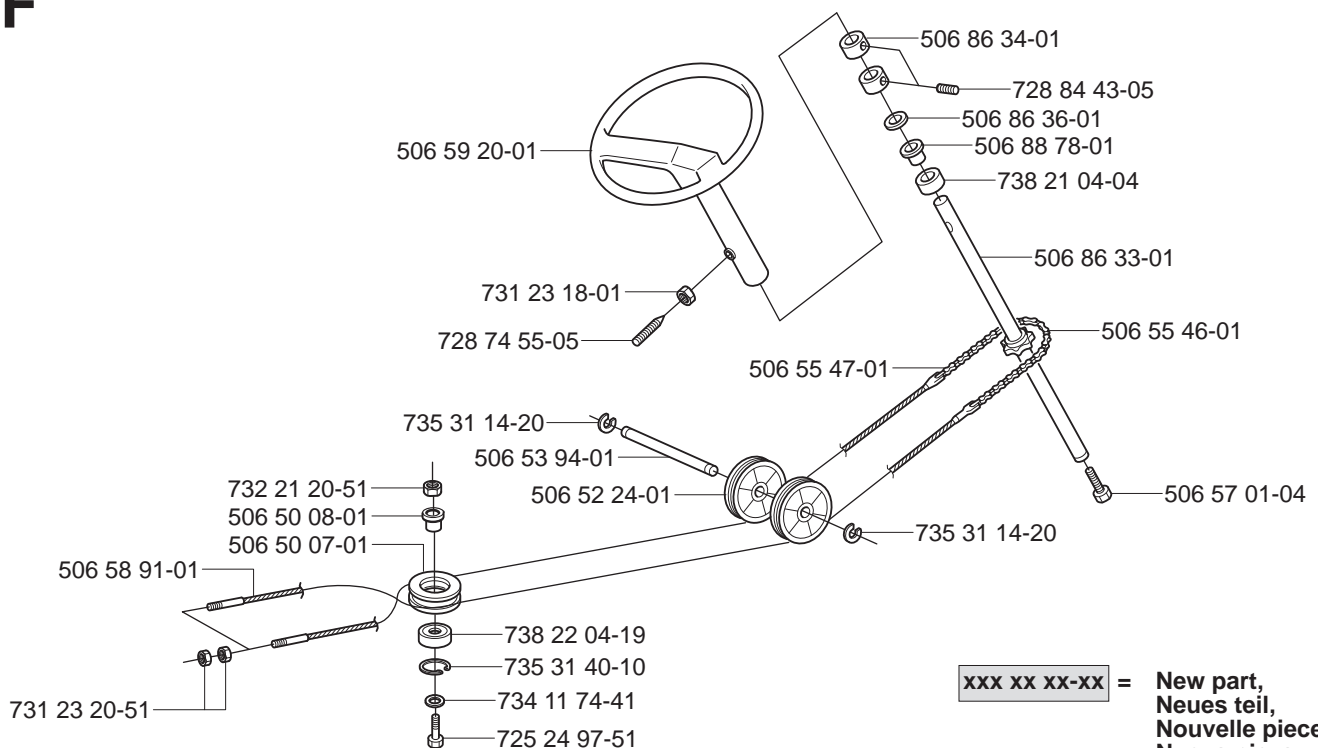


**xxx xx xx-xx = New part,  
Neues teil,  
Nouvelle piece,  
Nueva pieza,  
Ny detalj**

# E

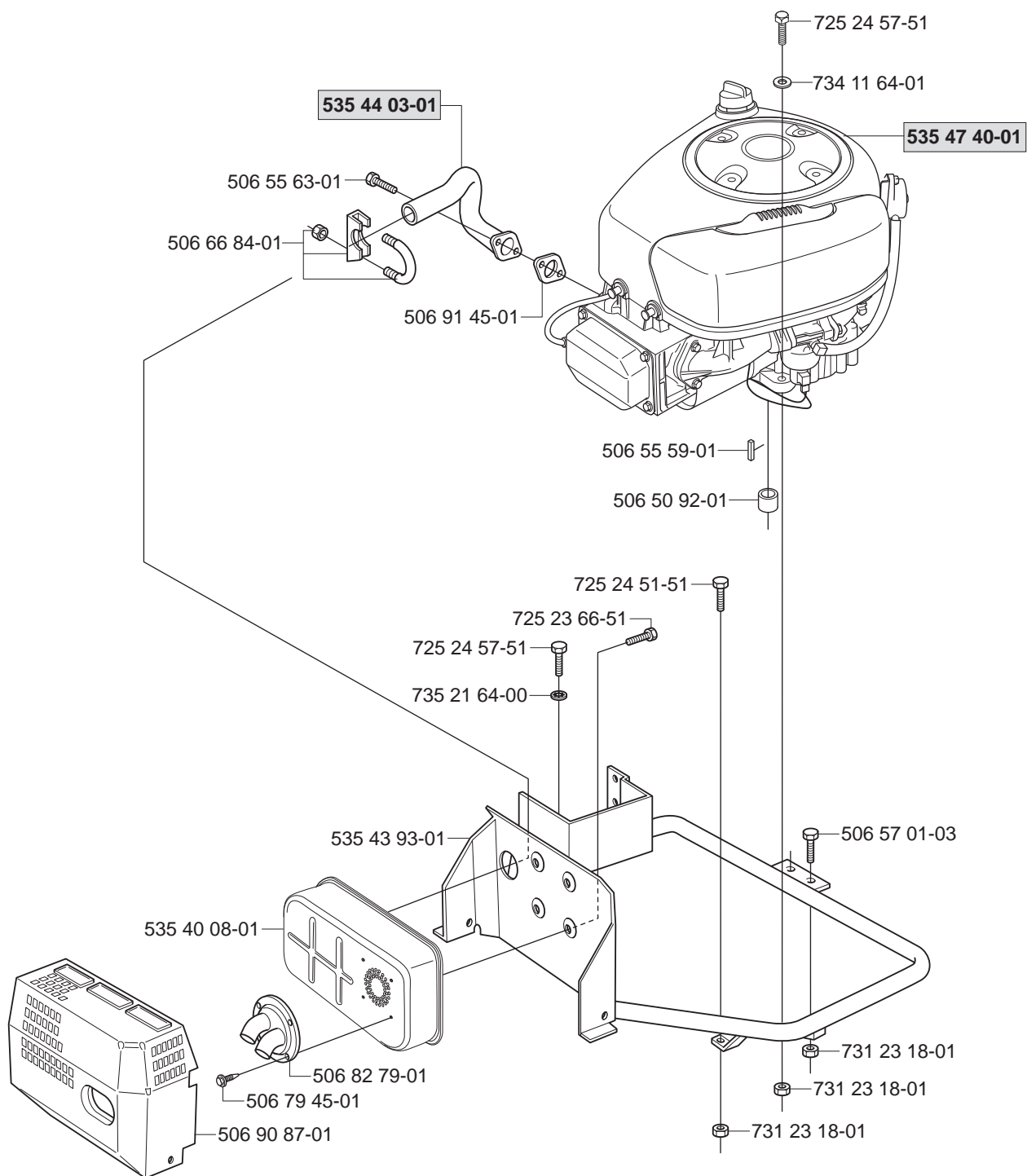


# F



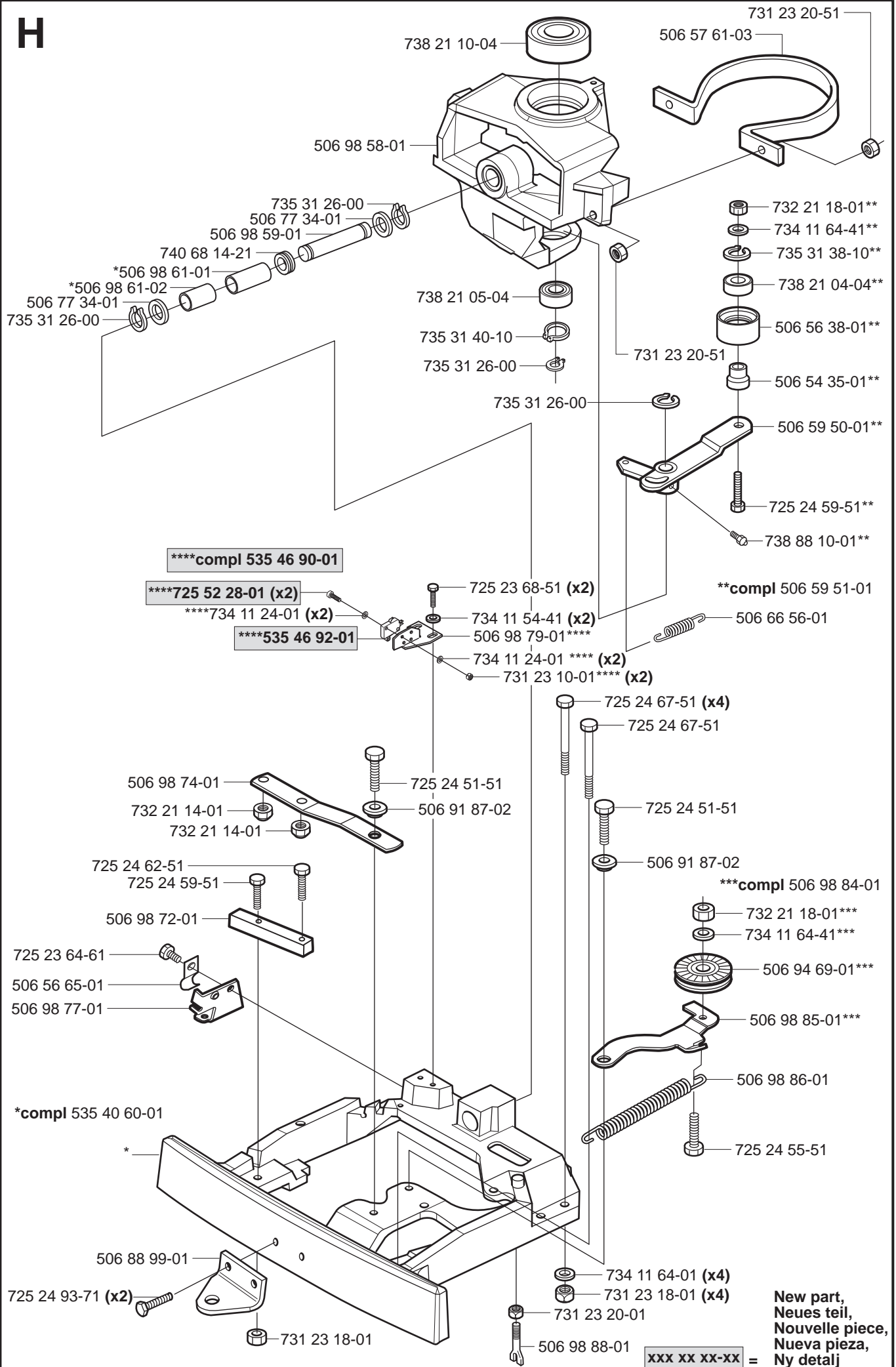
xxx xx xx-xx = New part,  
Neues teil,  
Nouvelle piece,  
Nueva pieza,  
Ny detalj

**G**

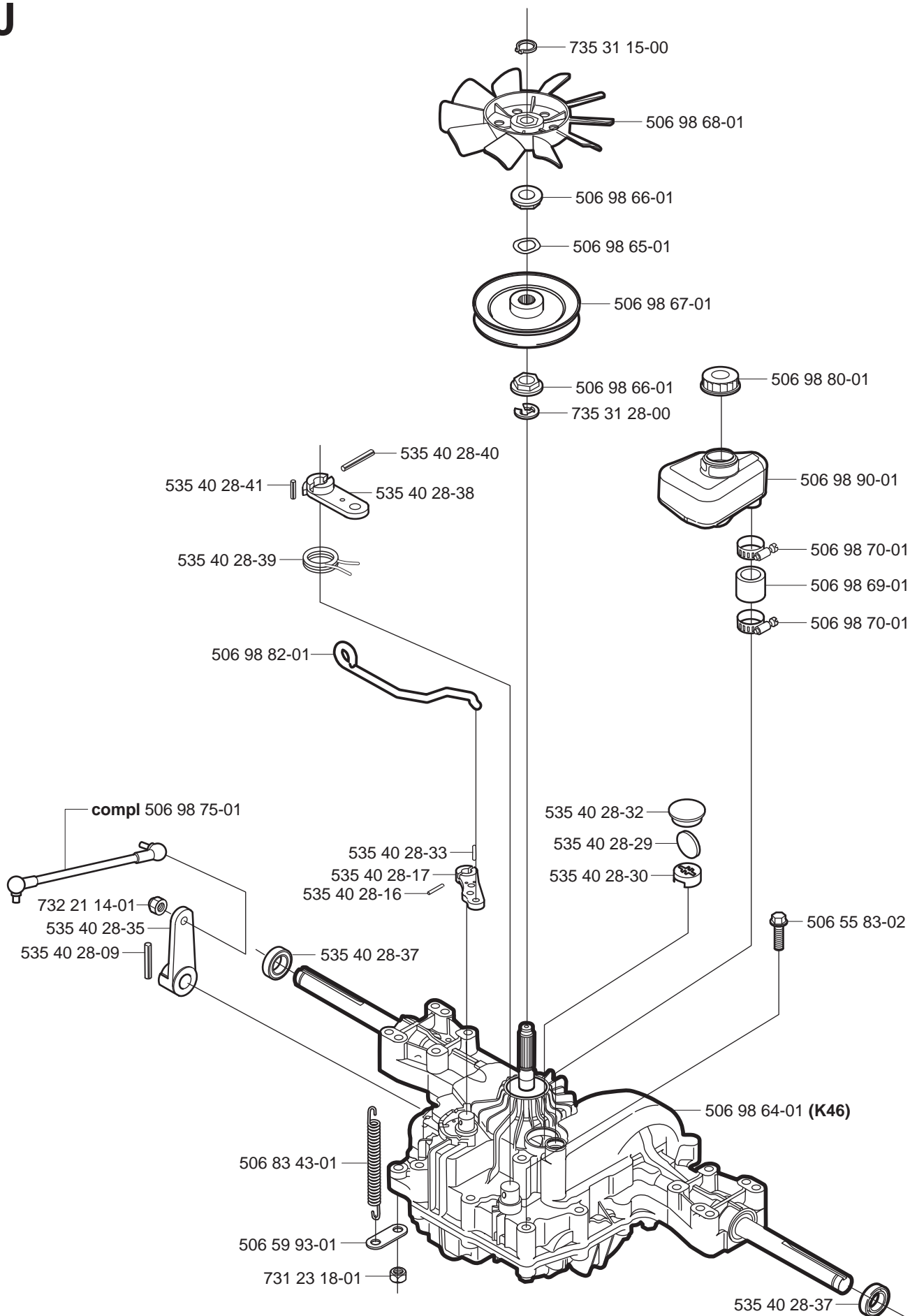


**xxx xx xx-xx = New part,  
Neues teil,  
Nouvelle piece,  
Nueva pieza,  
Ny detalj**

# H



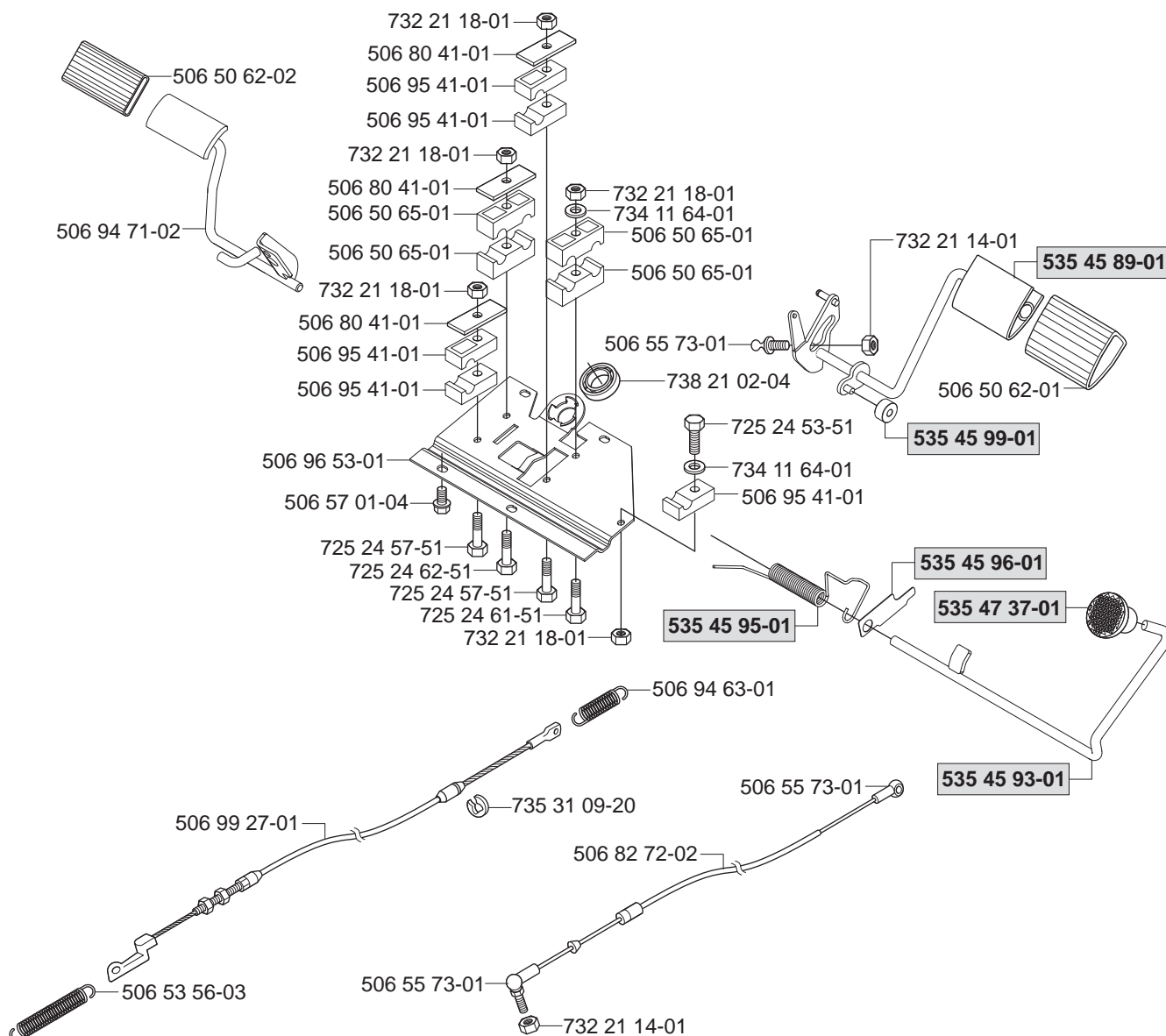
J



xxx xx xx-xx = New part,  
Neues teil,  
Nouvelle piece,  
Nueva pieza,  
Ny detalj



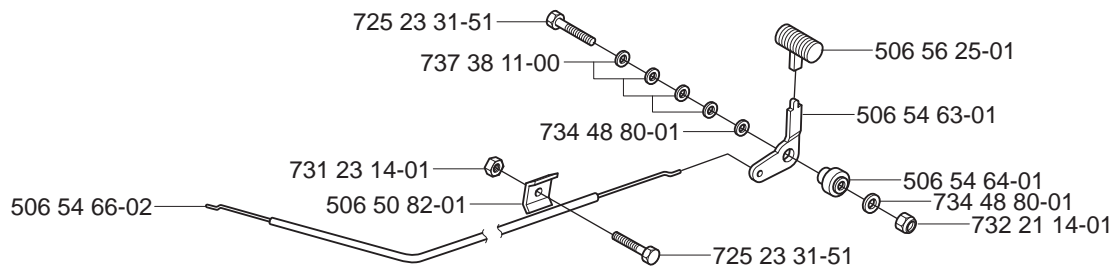
# K



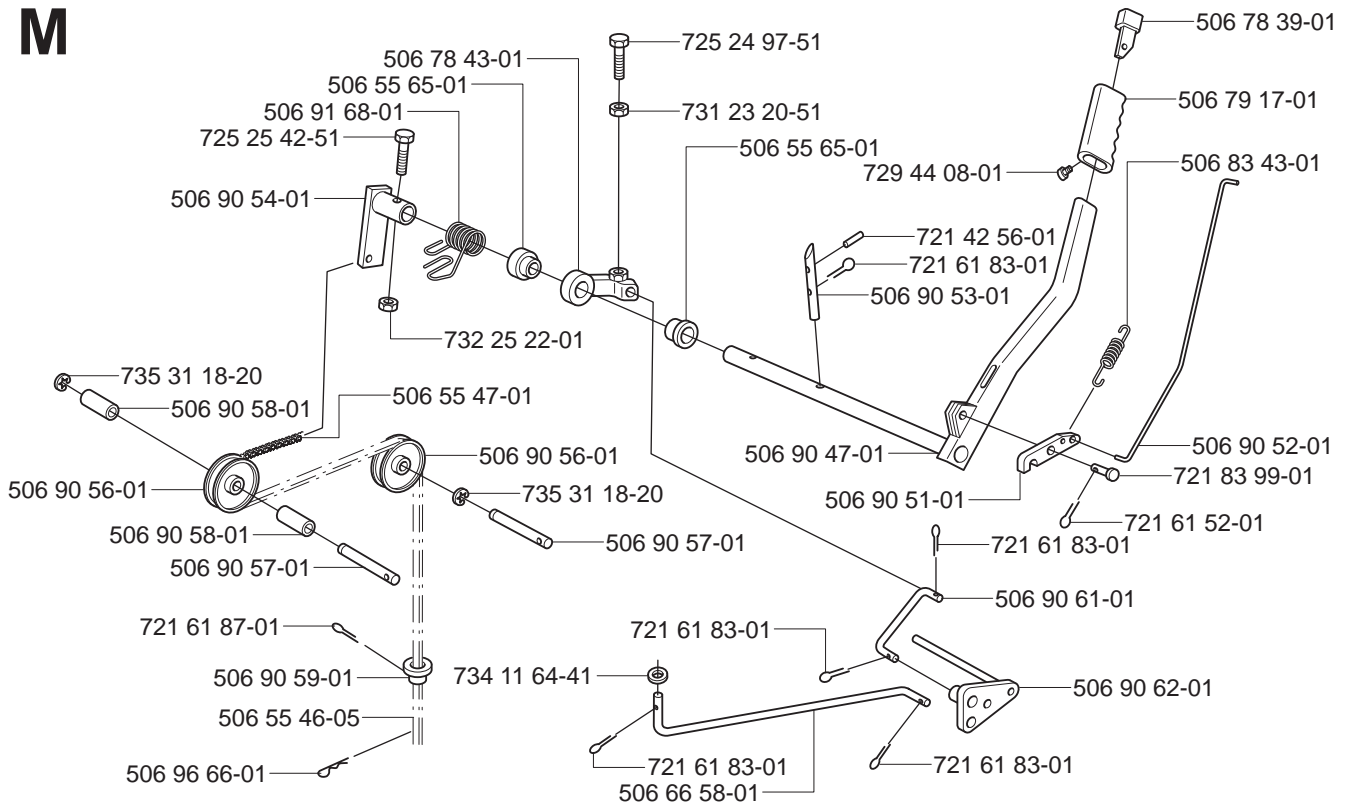
xxx xx xx-xx = New part,  
Neues teil,  
Nouvelle piece,  
Nueva pieza,  
Ny detalj



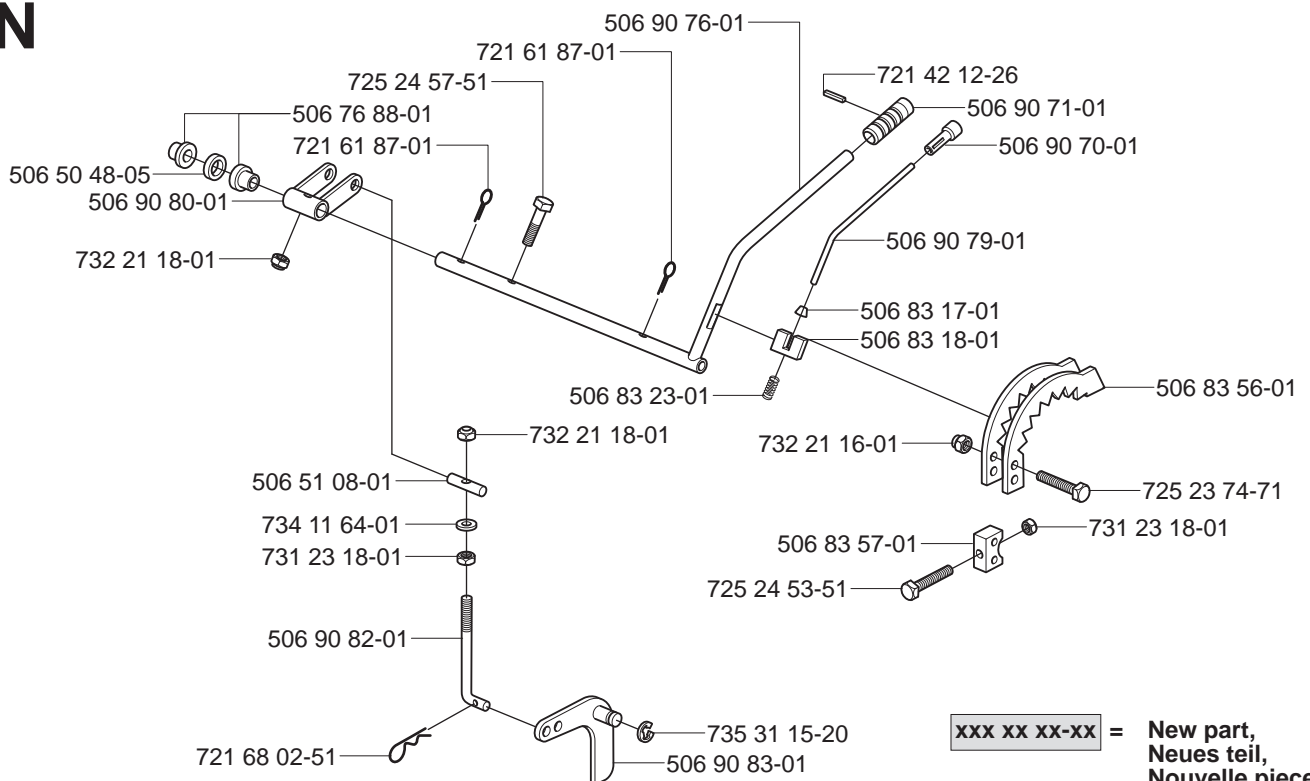
# L



# M

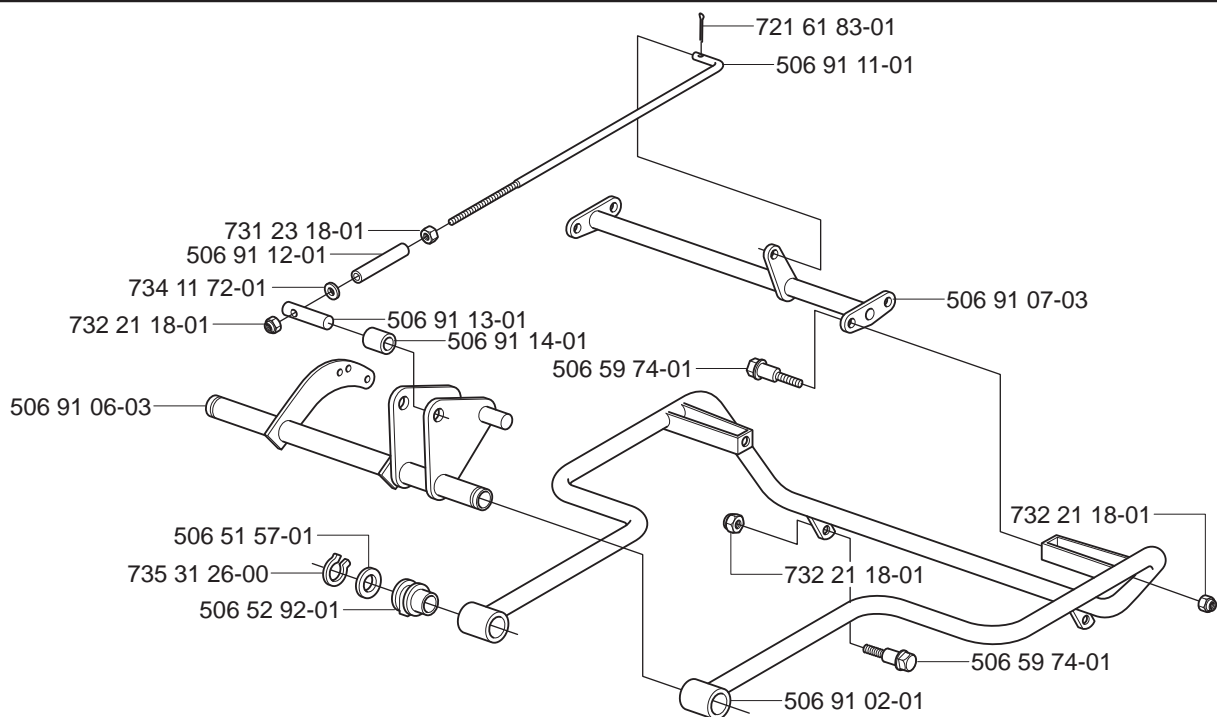


# N



xxx xx xx-xx = New part,  
Neues teil,  
Nouvelle piece,  
Nueva pieza,  
Ny detalj

P

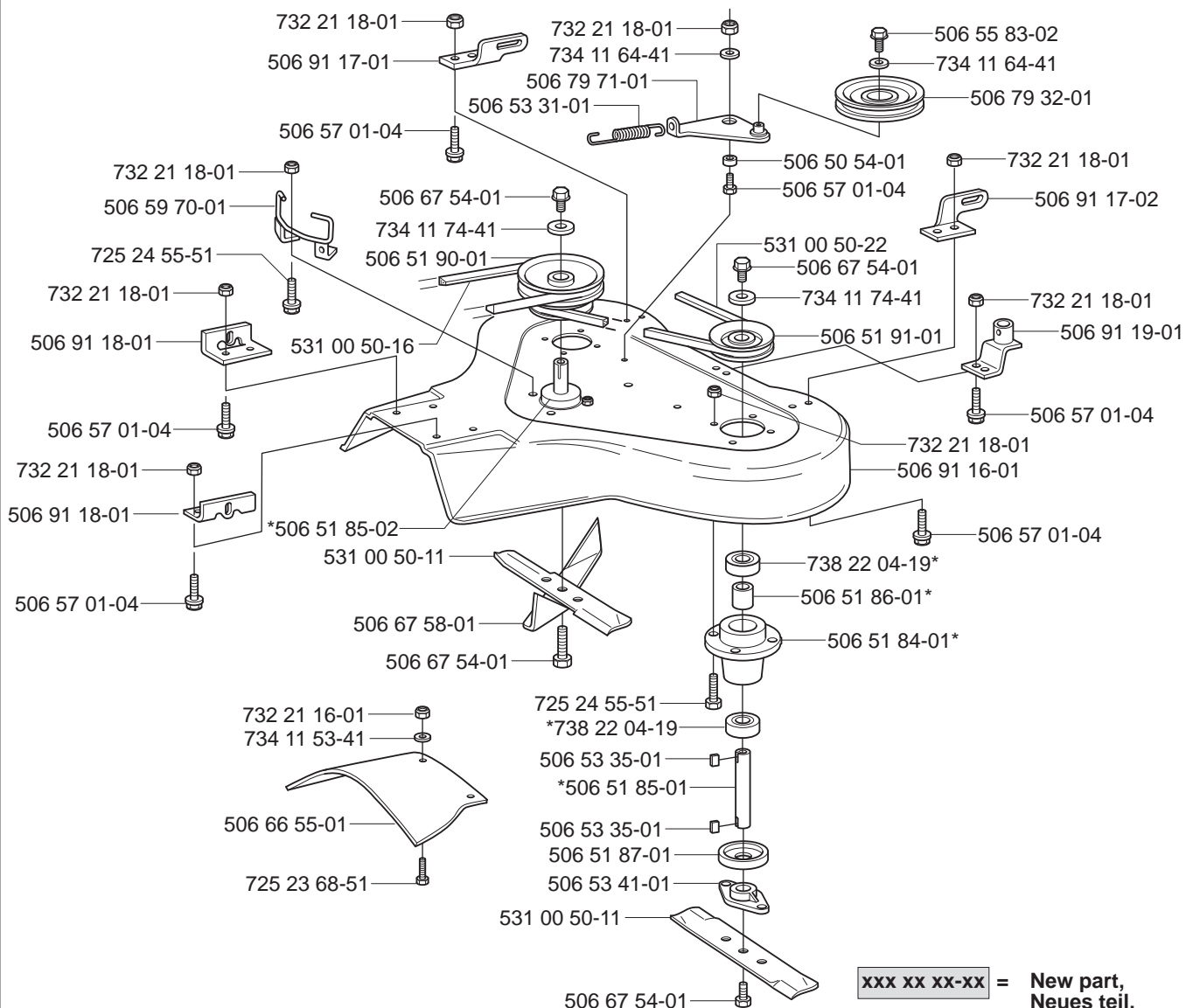


Q

## Rear 85

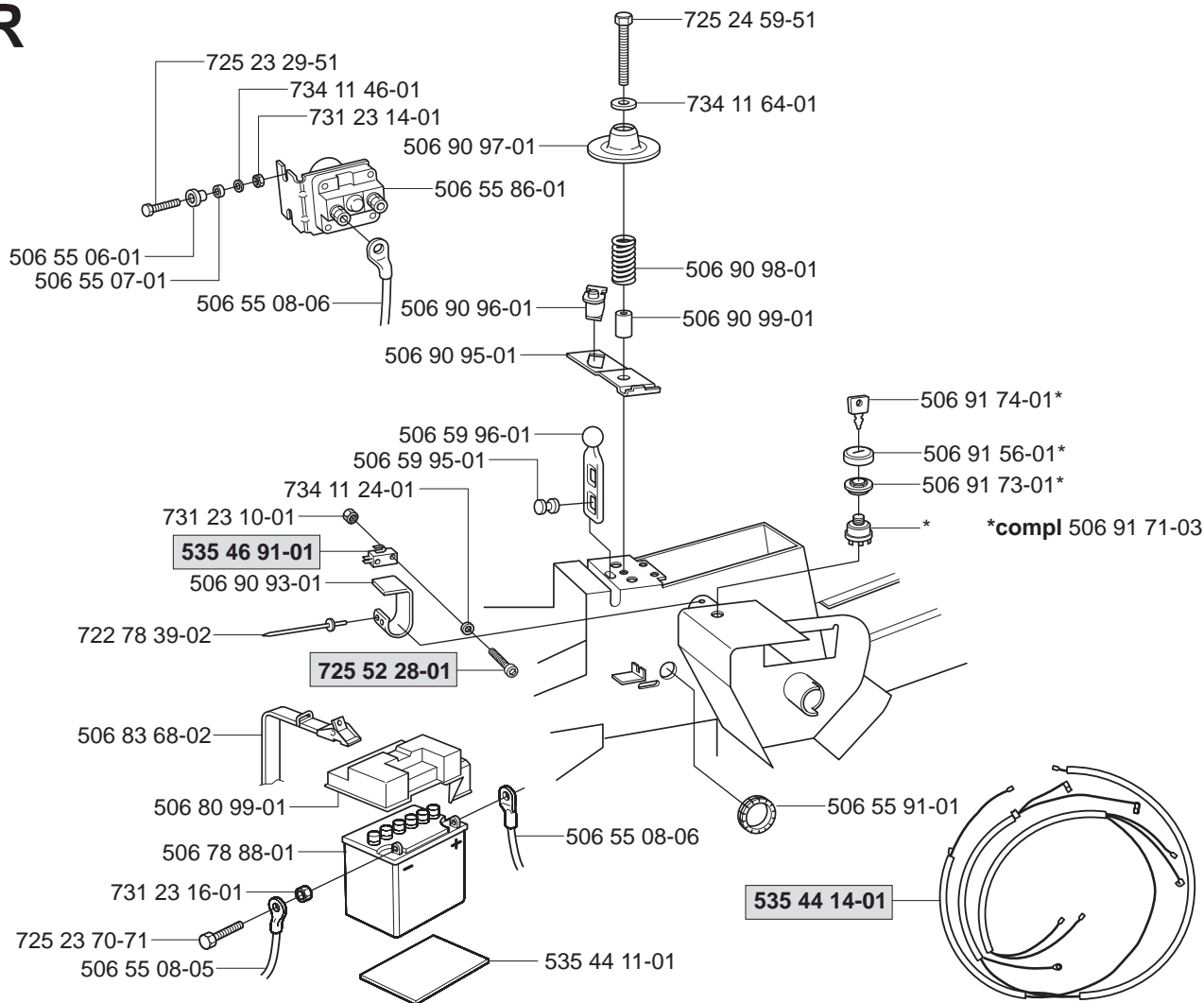
\*compl 506 53 34-01 Yttre. Outer. Extérieur. Äusser. Ulko.

\*compl 506 53 34-02 Mitten. Centre. Centre. Zentrum. Keski.



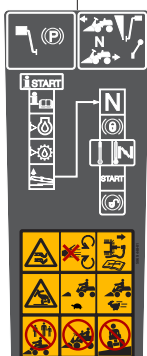
xxx xx xx-xx = New part,  
Neues teil,  
Nouvelle piece,  
Nueva pieza,  
Ny detalj

# R



# S

**Warning**  
506 94 48-01



535 43 20-01



506 84 28-01



506 84 28-03



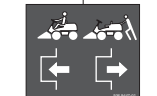
506 58 45-01



506 91 57-01



506 94 47-01



535 45 00-01



535 44 98-01

**Husqvarna**

535 44 99-01

**Husqvarna**

535 45 01-01 (x2)

**Husqvarna**

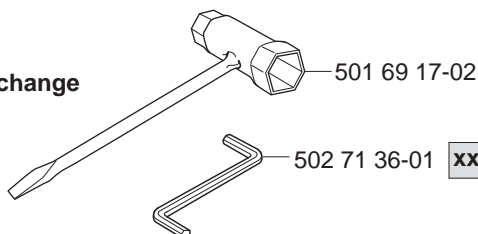
**Husqvarna**

535 44 95-01 **Rider 13**

**Rider 13** 535 44 95-02

# T

Leverans endast som reservdel  
Delivery as spare part only  
Nur als Ersatzteil lieferbar  
Livrabale seulement comme pièce de rechange  
Solo como repuesto  
Zasilà se jenom jako náhradní díl



**xxx xx xx-xx** = New part,  
Neues teil,  
Nouvelle piece,  
Nueva pieza,  
Ny detalj