

Rider 11

Spare parts

Ersatzteile

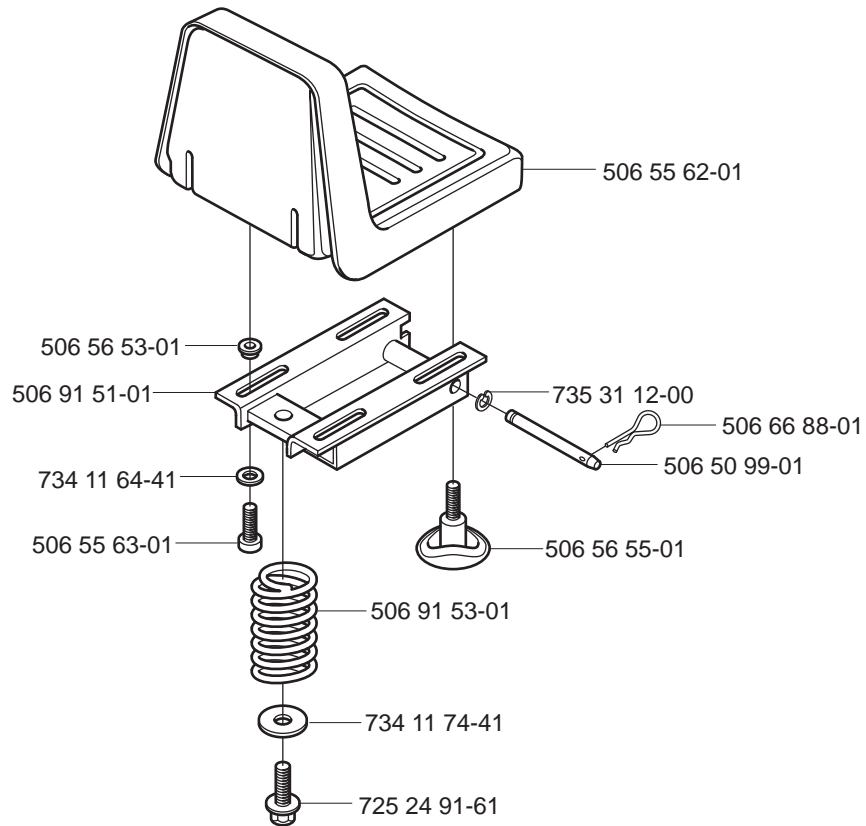
Pièces détachées

Reserve onderdelen

Repuestos

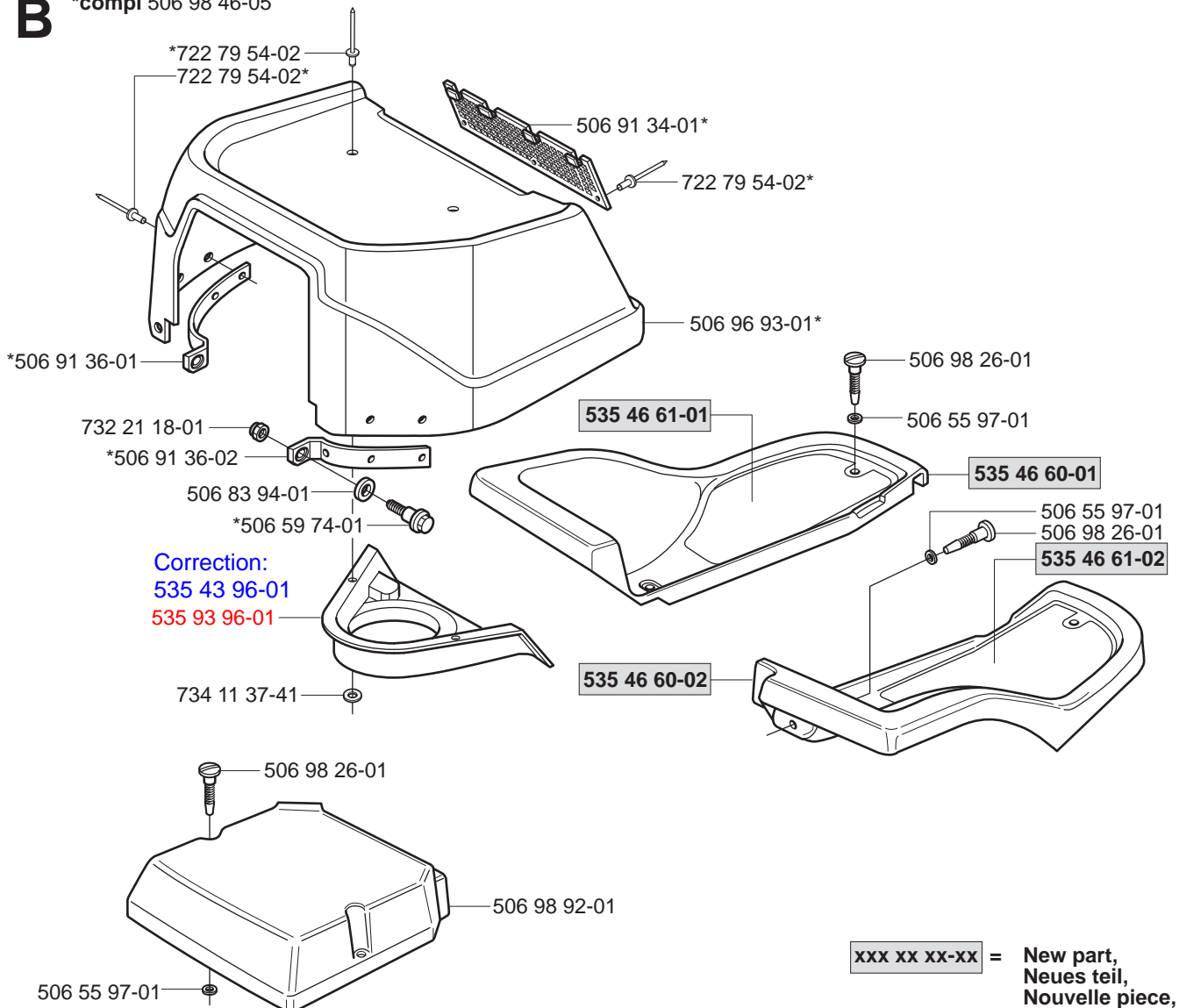
Reservdelar

A



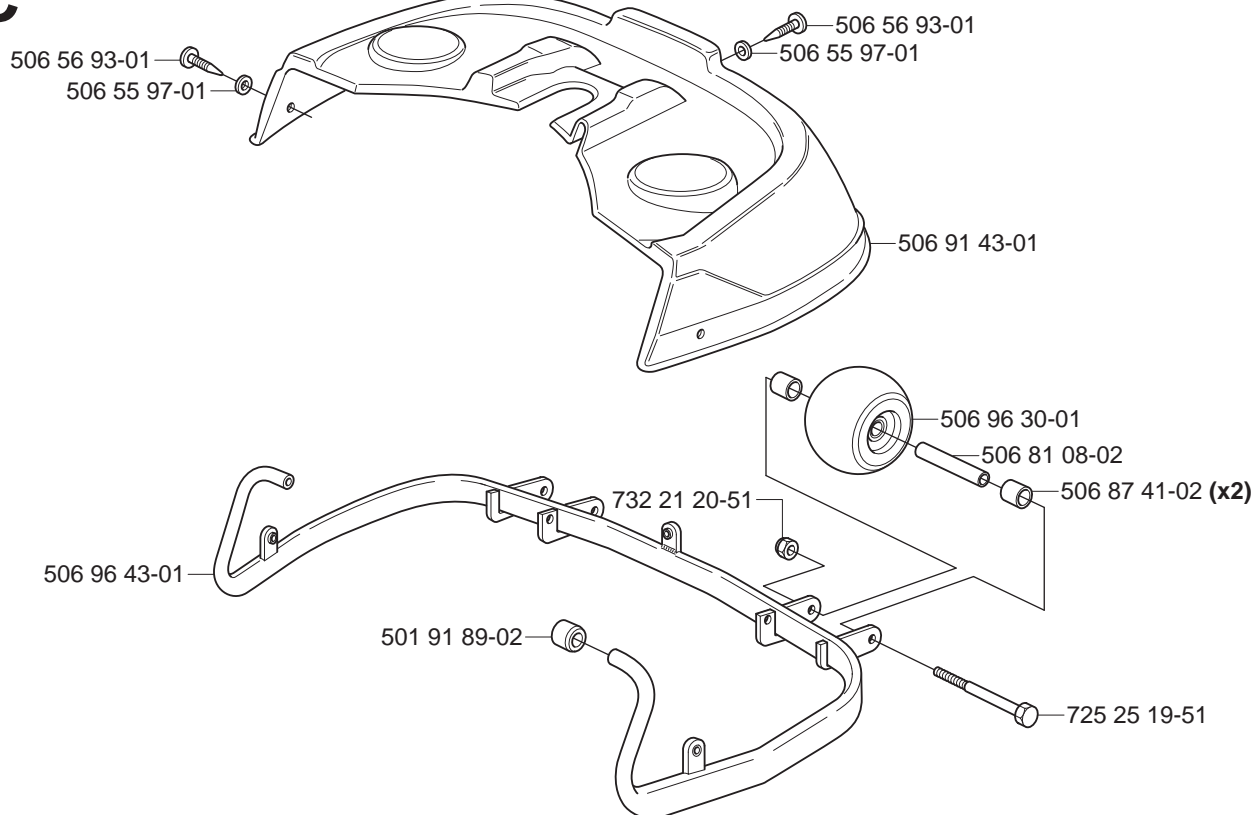
B

*compl 506 98 46-05



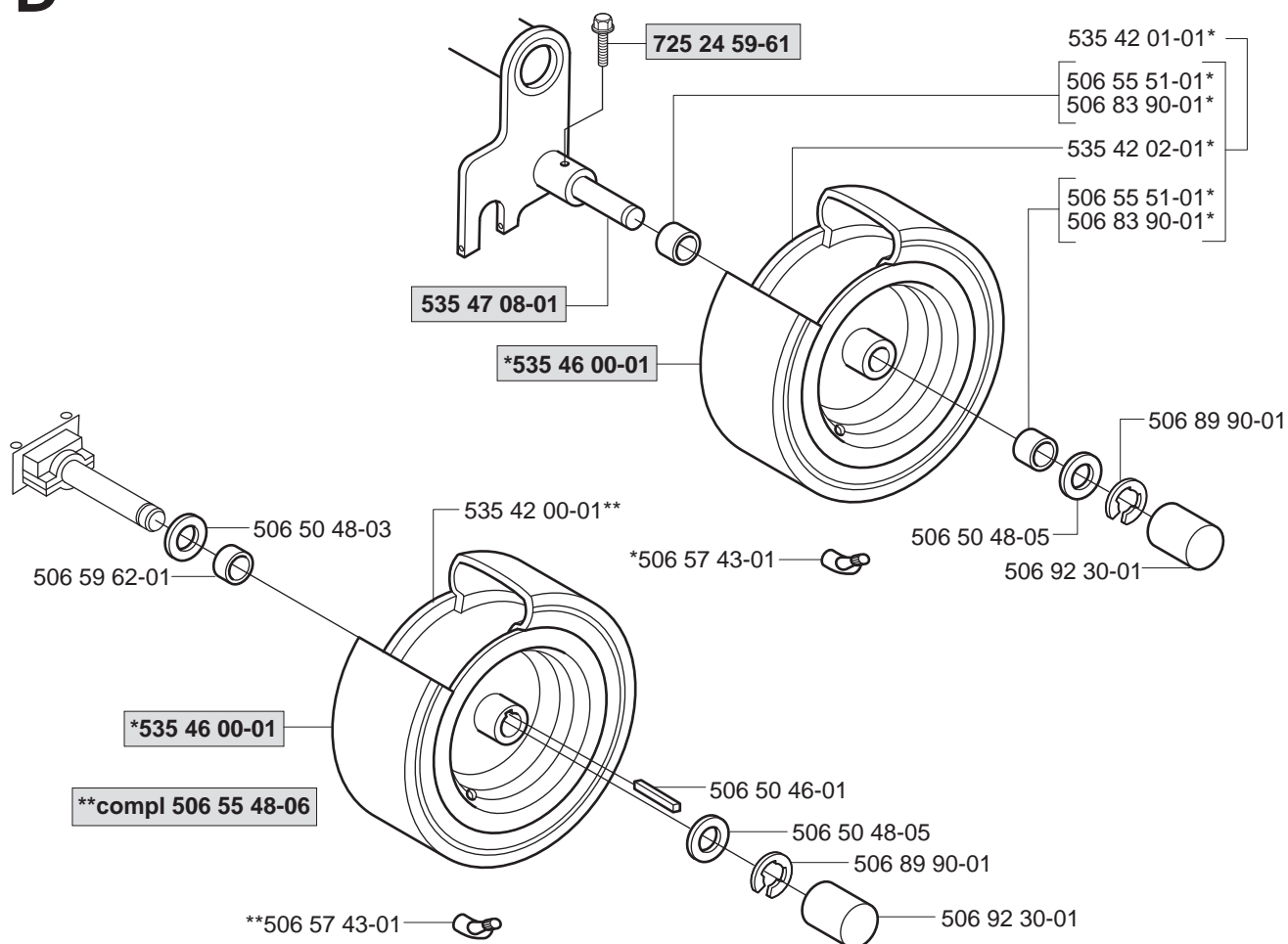
xxx xx xx-xx = New part,
Neues teil,
Nouvelle piece,
Nueva pieza,
Ny detalj

C



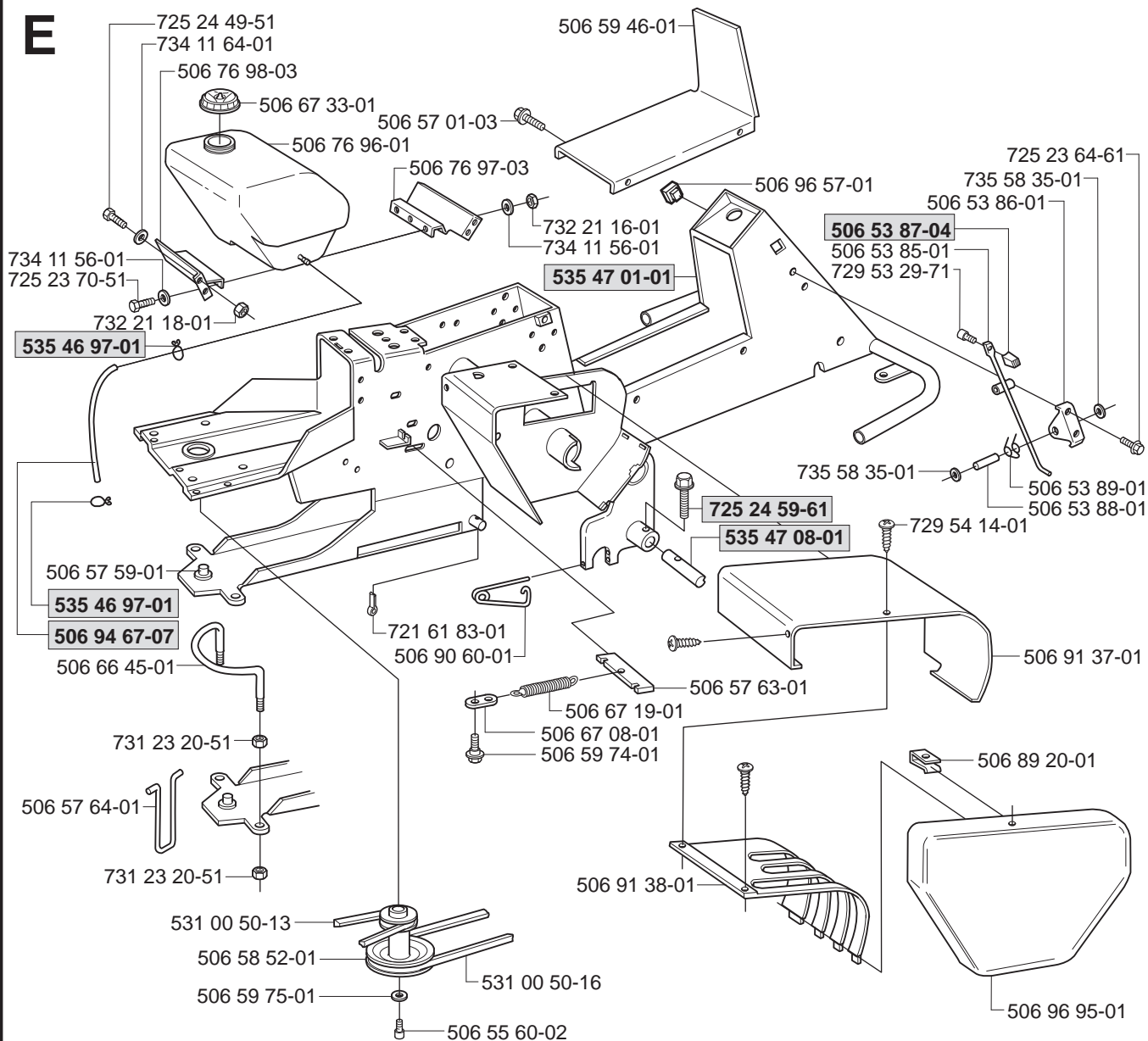
D

*compl 506 55 49-07

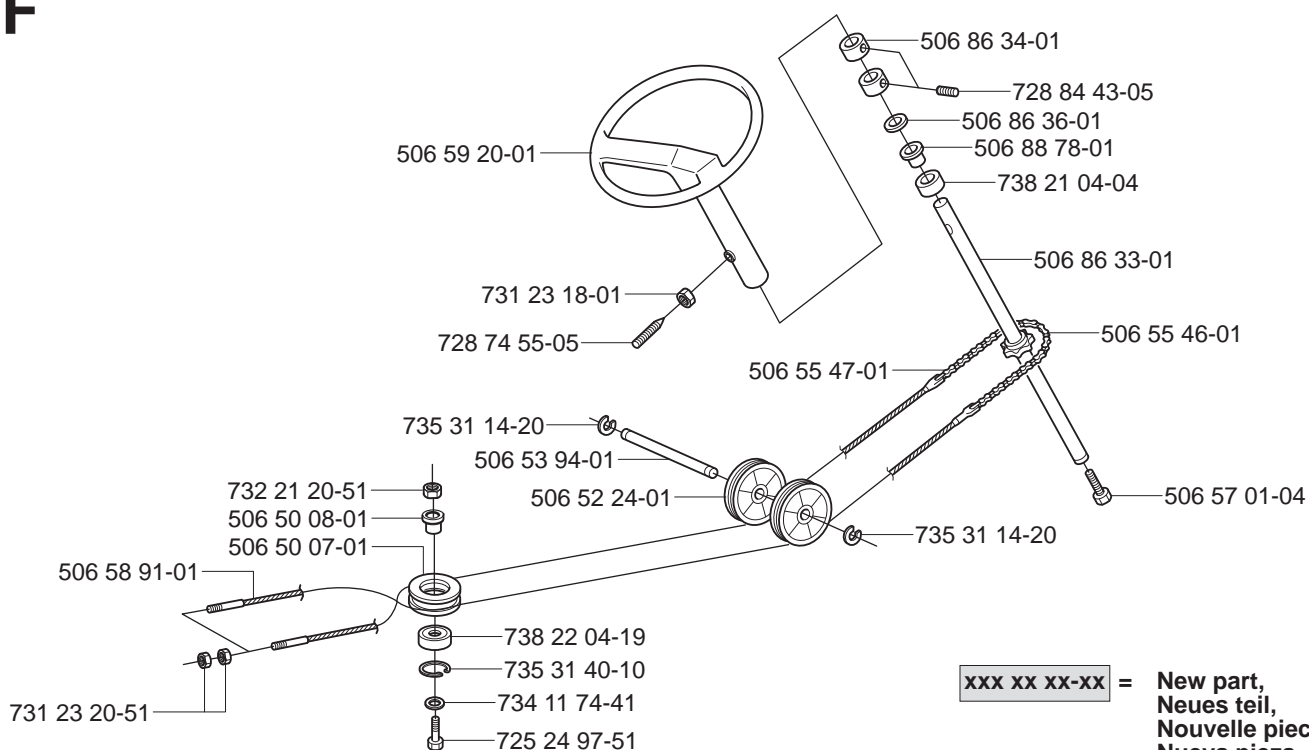


xxx xx xx-xx = New part,
Neues teil,
Nouvelle piece,
Nueva pieza,
Ny detalj

E

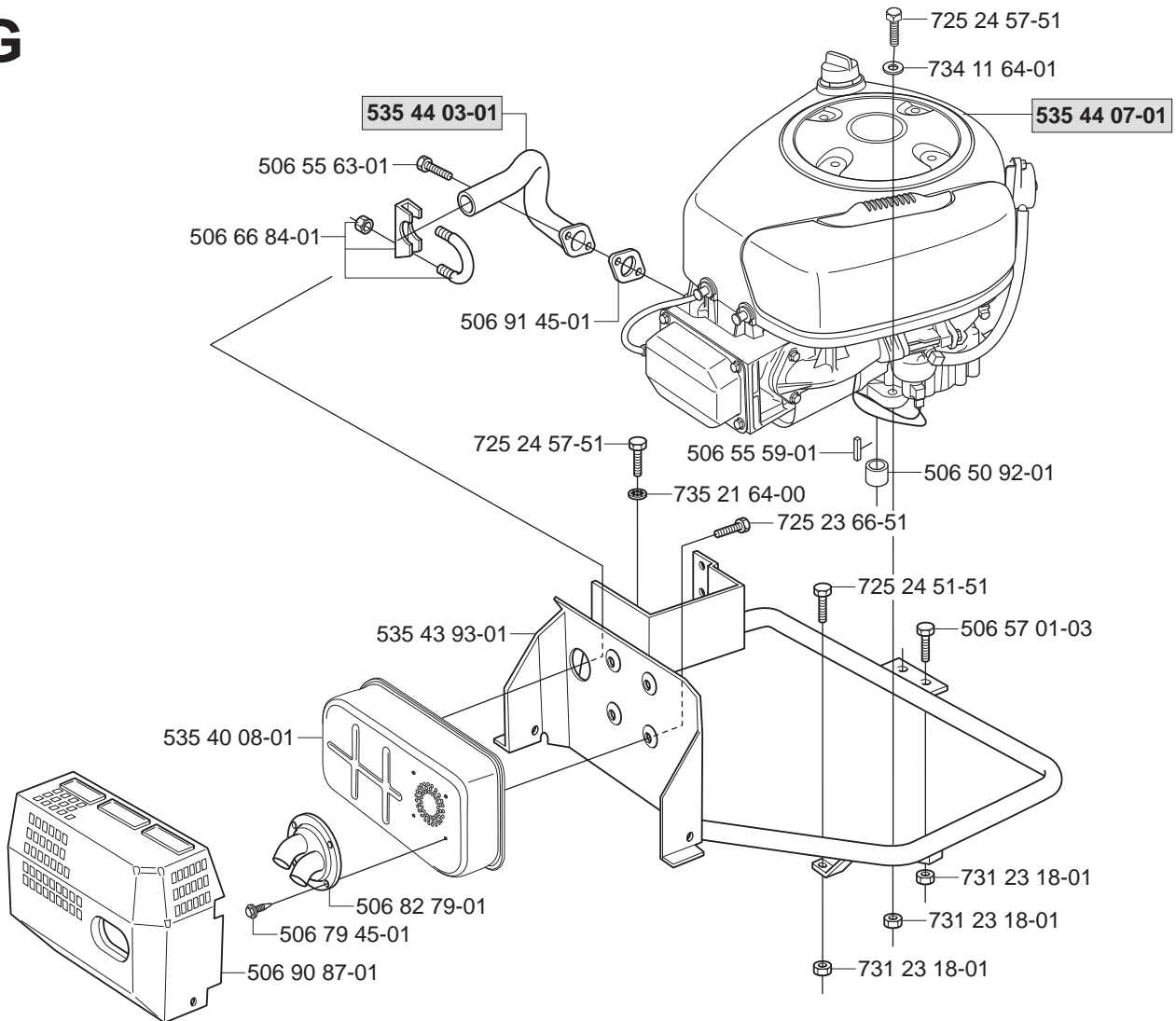


F

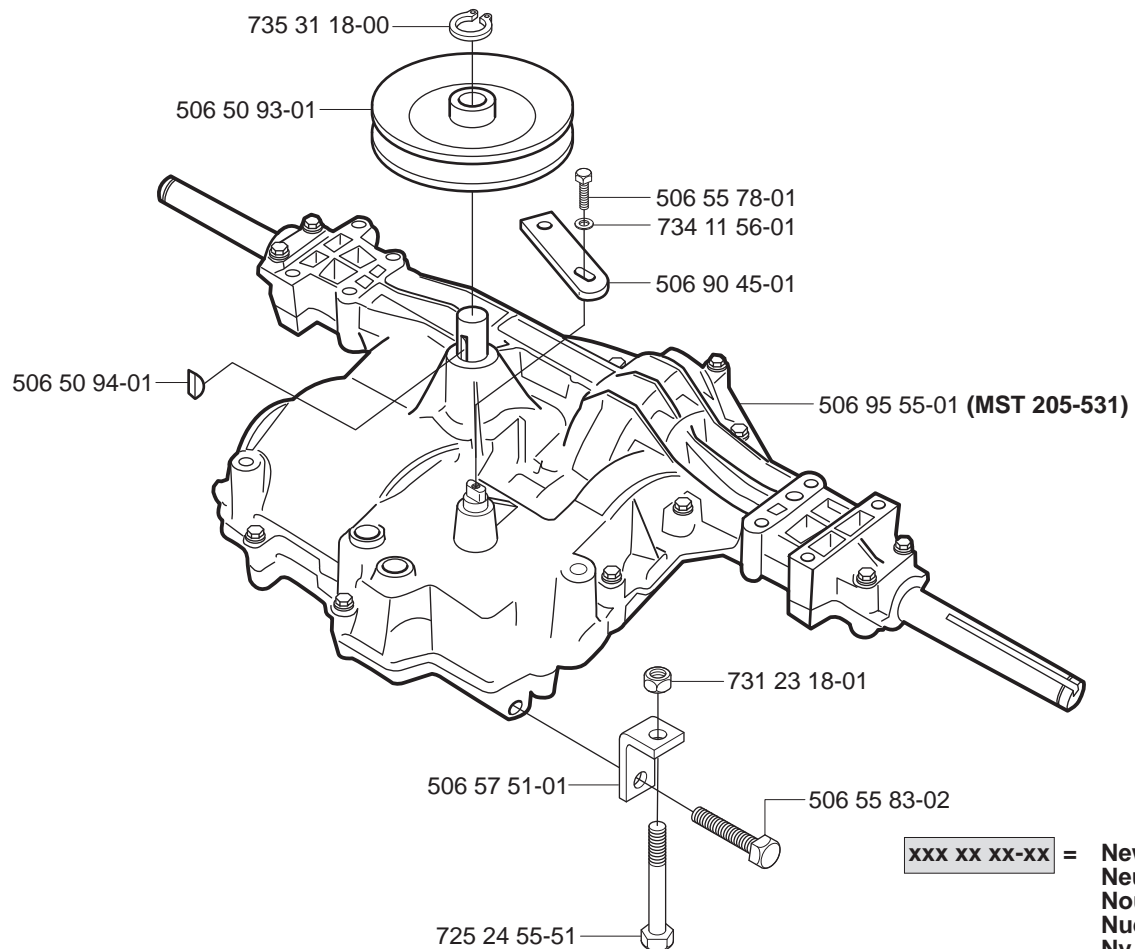


xxx xx xx-xx = New part,
Neues teil,
Nouvelle piece,
Nueva pieza,
Ny detalj

G

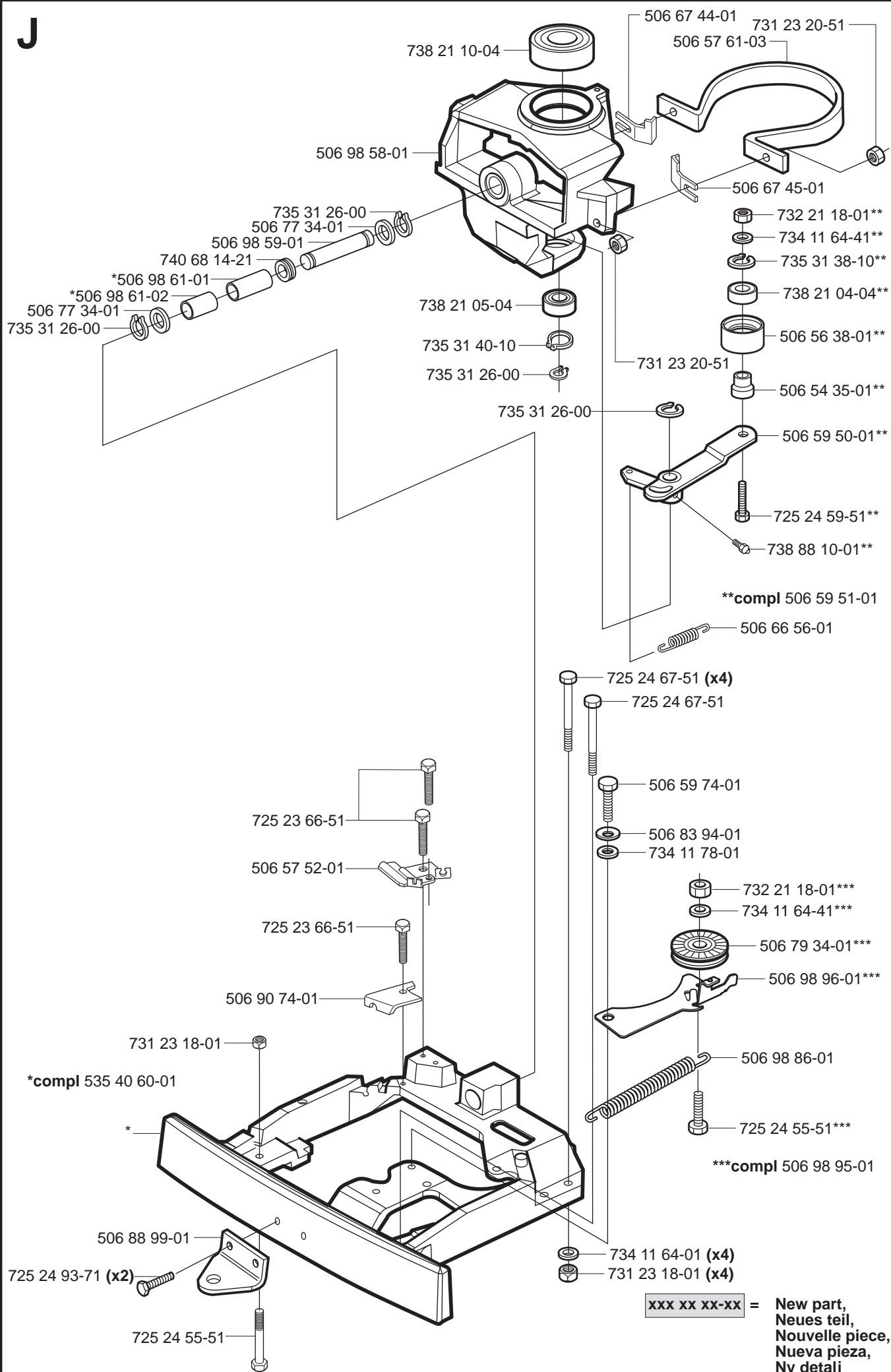


H

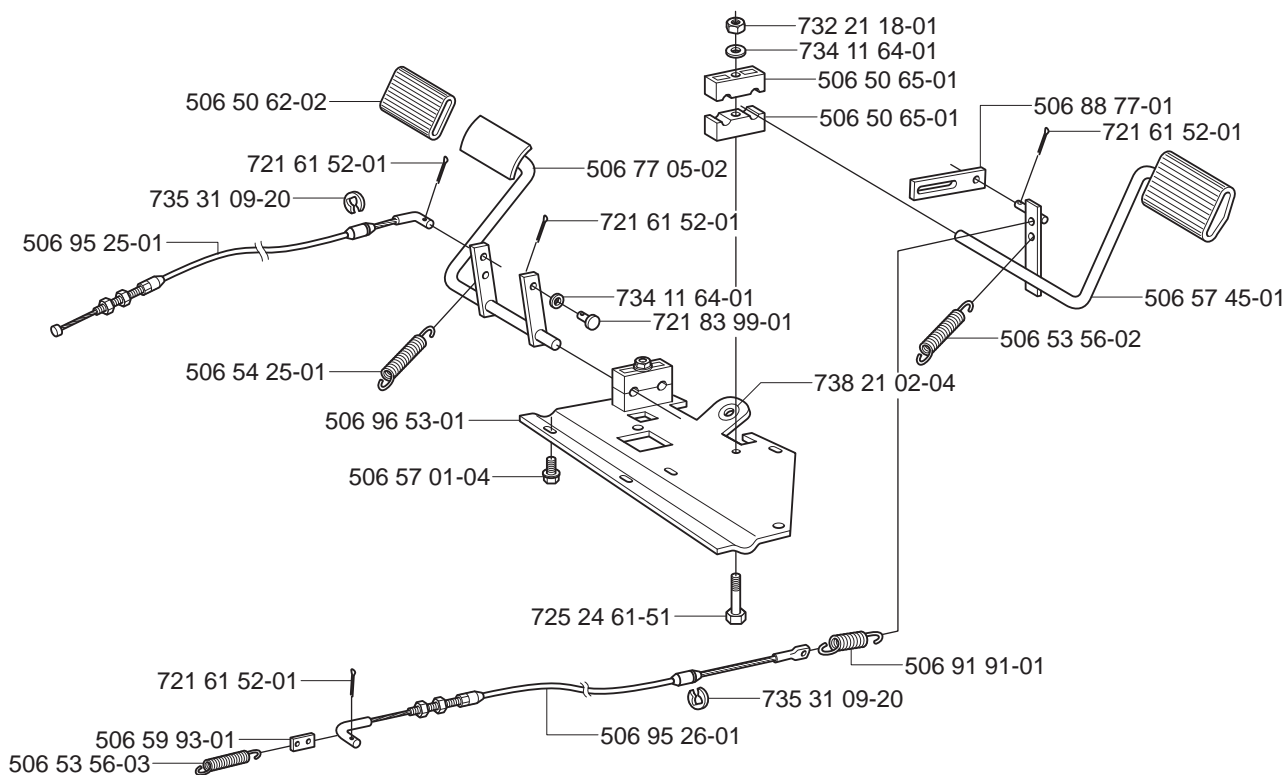


xxx xx xx-xx = New part,
Neues teil,
Nouvelle piece,
Nueva pieza,
Ny detalj

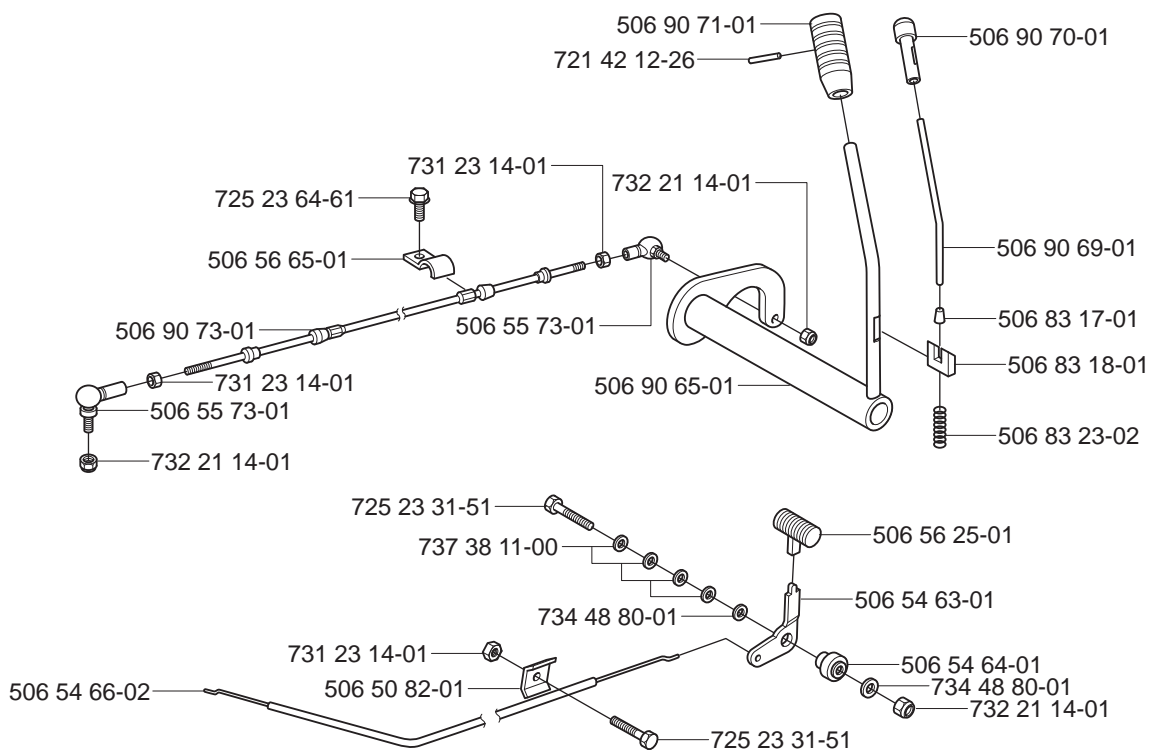
J



K



L



xxx xx xx-xx = New part,
Neues teil,
Nouvelle piece,
Nueva pieza,
Ny detalj

This diagram illustrates the exploded view of a vehicle suspension assembly, showing the relationship between various components. The parts are labeled with their respective part numbers:

- 506 78 43-01
- 506 55 65-01
- 506 91 68-01
- 725 25 42-51
- 506 90 54-01
- 732 25 22-01
- 735 31 18-20
- 506 90 58-01
- 506 55 47-01
- 506 90 56-01
- 735 31 18-20
- 506 90 57-01
- 721 61 87-01
- 506 90 59-01
- 506 55 46-05
- 506 96 66-01
- 725 24 97-51
- 731 23 20-51
- 506 55 65-01
- 729 44 08-01
- 721 42 56-01
- 721 61 83-01
- 506 90 53-01
- 506 78 39-01
- 506 79 17-01
- 506 83 43-01
- 506 90 47-01
- 506 90 51-01
- 721 61 83-01
- 506 90 61-01
- 721 61 83-01
- 506 90 62-01
- 721 61 83-01
- 506 66 58-01
- 506 90 52-01
- 721 83 99-01
- 721 61 52-01
- 734 11 64-41

Diagram illustrating the assembly of a mechanical component, showing various parts and their corresponding reference numbers:

- 506 50 48-05
- 506 90 80-01
- 732 21 18-01
- 725 24 57-51
- 506 76 88-01
- 721 61 87-01
- 506 90 76-01
- 721 42 12-26
- 506 90 71-01
- 506 90 70-01
- 506 90 79-01
- 506 83 17-01
- 506 83 18-01
- 506 83 23-01
- 732 21 16-01
- 506 83 56-01
- 725 23 74-71
- 731 23 18-01
- 506 83 57-01
- 725 24 53-51
- 506 51 08-01
- 734 11 64-01
- 731 23 18-01
- 506 90 82-01
- 721 68 02-51
- 735 31 15-20
- 506 90 83-01

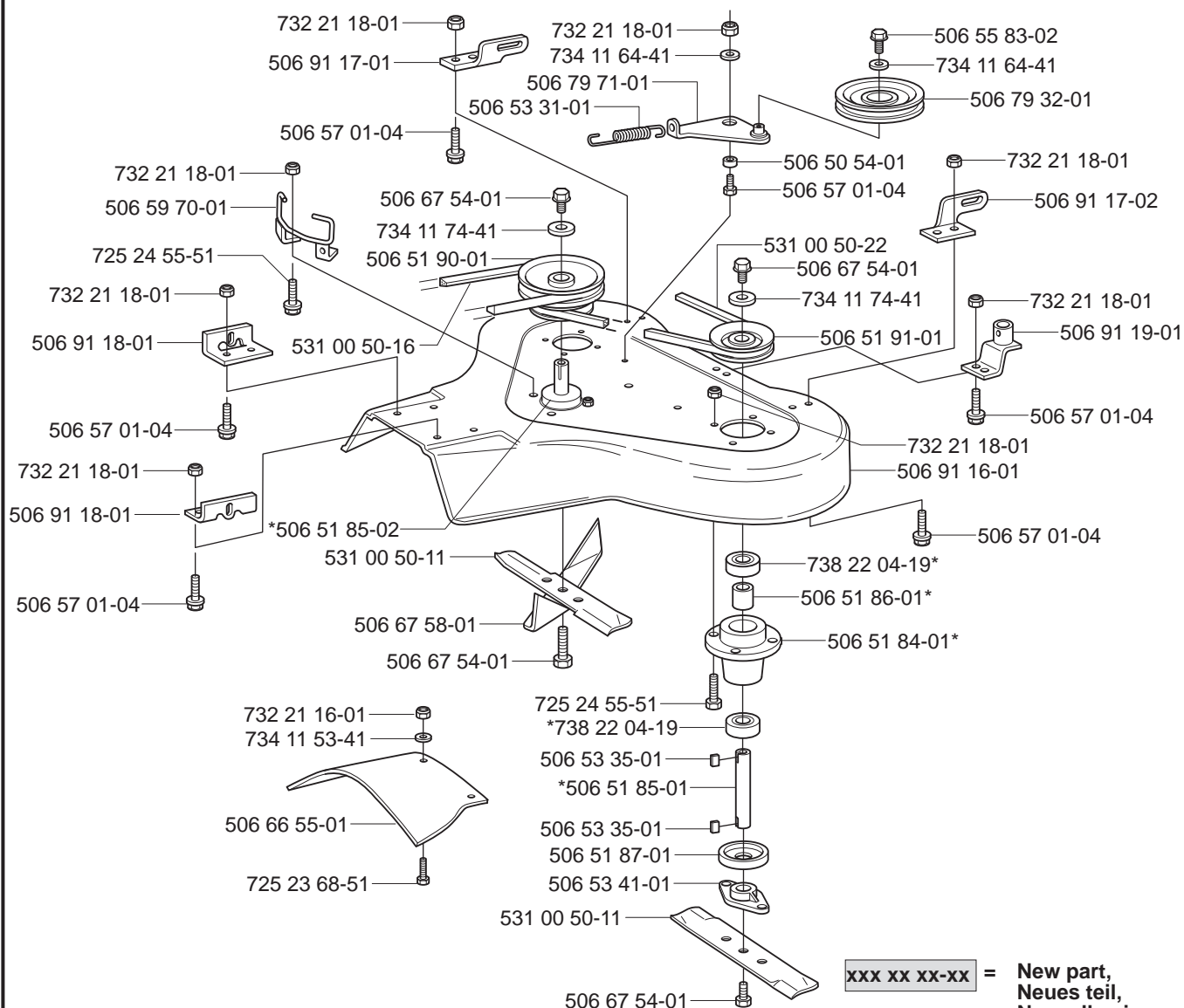
Legend: **xxx xx xx-xx = New part**

xxx xx xx-xx = New part,
Neues teil,
Nouvelle piece,
Nueva pieza,
Ny detalj

Exploded view diagram of a mechanical assembly. The components are labeled with part numbers:

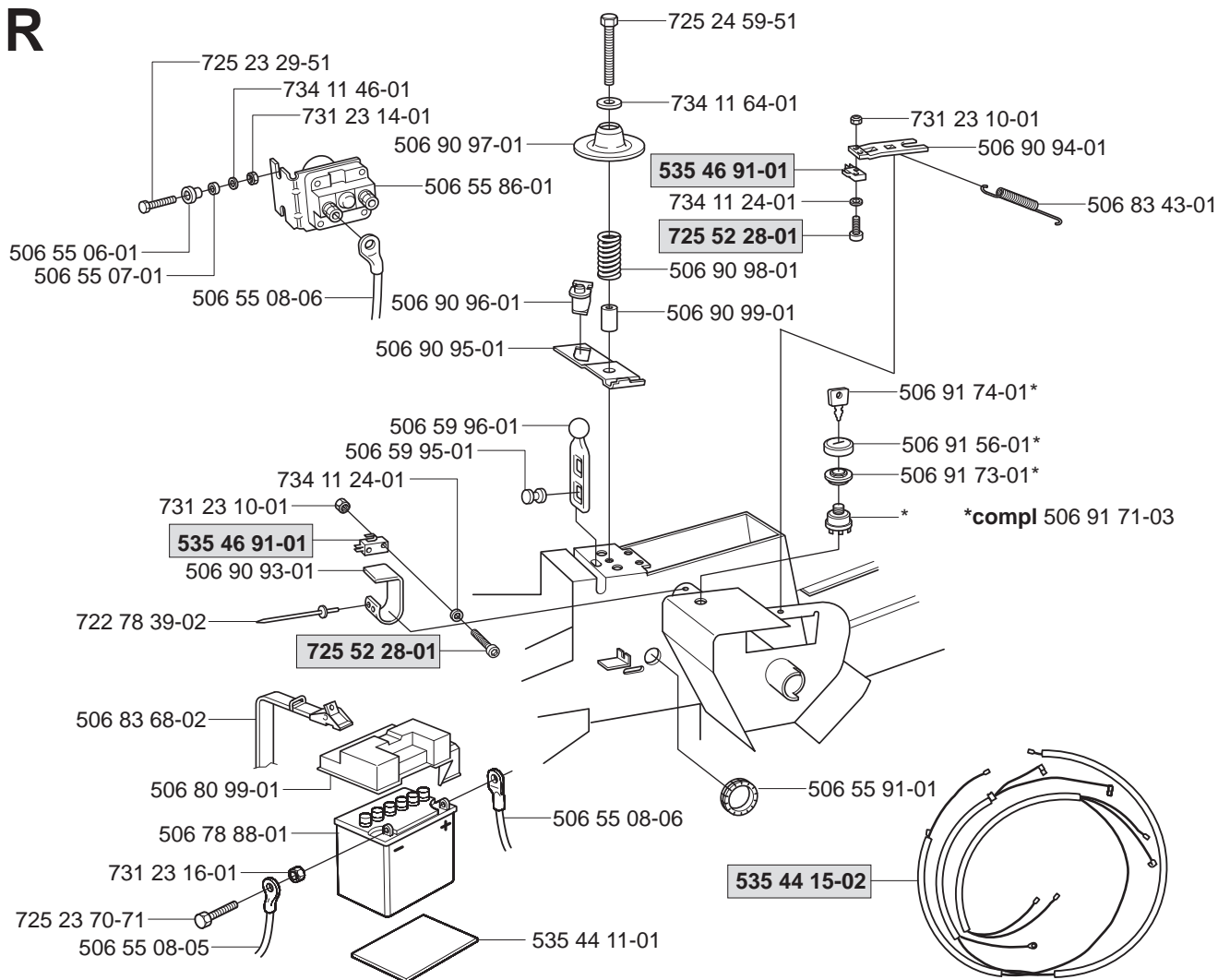
- 721 61 83-01
- 506 91 11-01
- 731 23 18-01
- 506 91 12-01
- 734 11 72-01
- 732 21 18-01
- 506 91 13-01
- 506 91 14-01
- 506 91 06-03
- 506 51 57-01
- 735 31 26-00
- 506 52 92-01
- 506 59 74-01
- 506 91 07-03
- 732 21 18-01
- 506 91 02-01
- 506 59 74-01

*compl 506 53 34-01 Yttre. Outer. Exterieur. Äusser. Ulko.
*compl 506 53 34-02 Mitten. Centre. Centre. Zentrum. Keski.

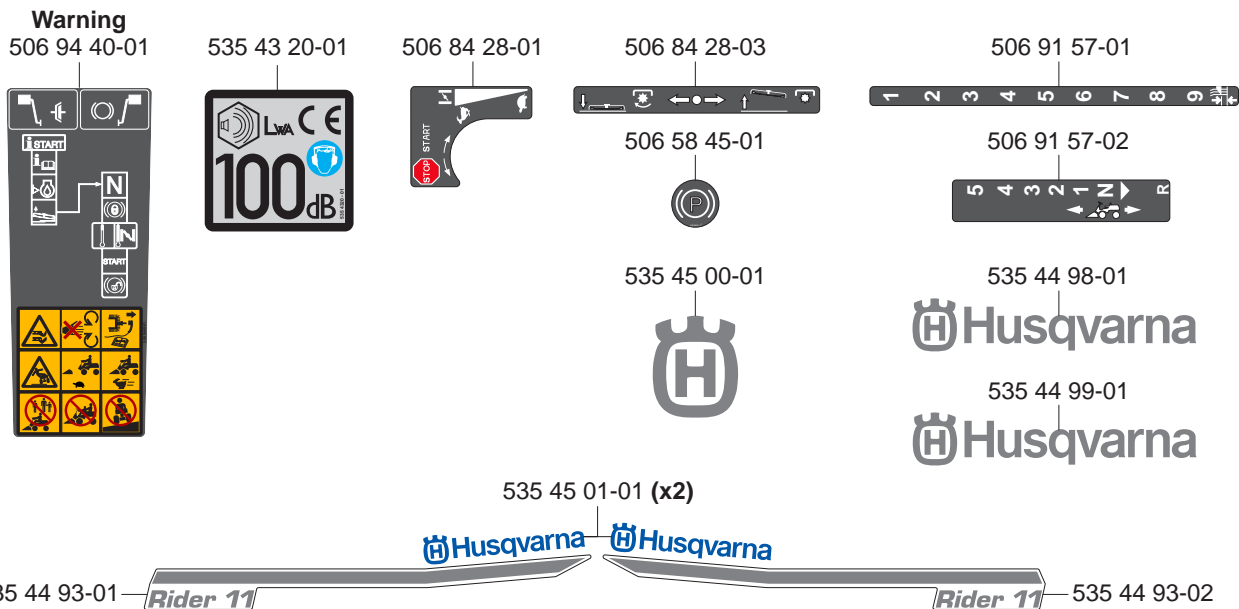


xxx xx xx-xx = New part,
Neues teil,
Nouvelle piece,
Nueva pieza,
Ny detalj

R

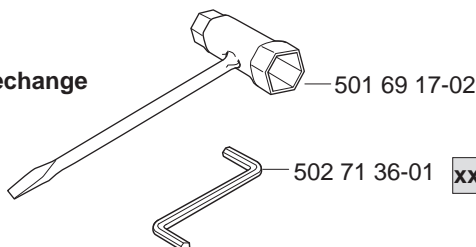


S



T

Leverans endast som reservdel
Delivery as spare part only
Nur als Ersatzteil lieferbar
Livrabla seulement comme pièce de rechange
Solo como repuesto
Zasilà se jenom jako náhradni díl



xxx xx xx-xx = New part,
Neues teil,
Nouvelle piece,
Nueva pieza,
Ny detalj