

Rider 13 R Special

Spare parts

Ersatzteile

Pièces détachées

Reserve onderdelen

Repuestos

Reservdelar

Exploded view diagram of a seat cushion assembly. The components are labeled with part numbers:

- 506 55 62-01: Seat cushion cover
- 506 56 53-01: Bolt
- 506 91 51-01: Bolt
- 734 11 64-41: Washer
- 506 55 63-01: Bolt
- 506 91 53-01: Spring
- 734 11 74-41: Washer
- 725 24 91-61: Bolt
- 735 31 12-00: Pin
- 506 66 88-01: Pin
- 506 50 99-01: Pin
- 506 56 55-01: Bolt

Diagram illustrating the assembly of a washing machine door, showing various components and their corresponding part numbers:

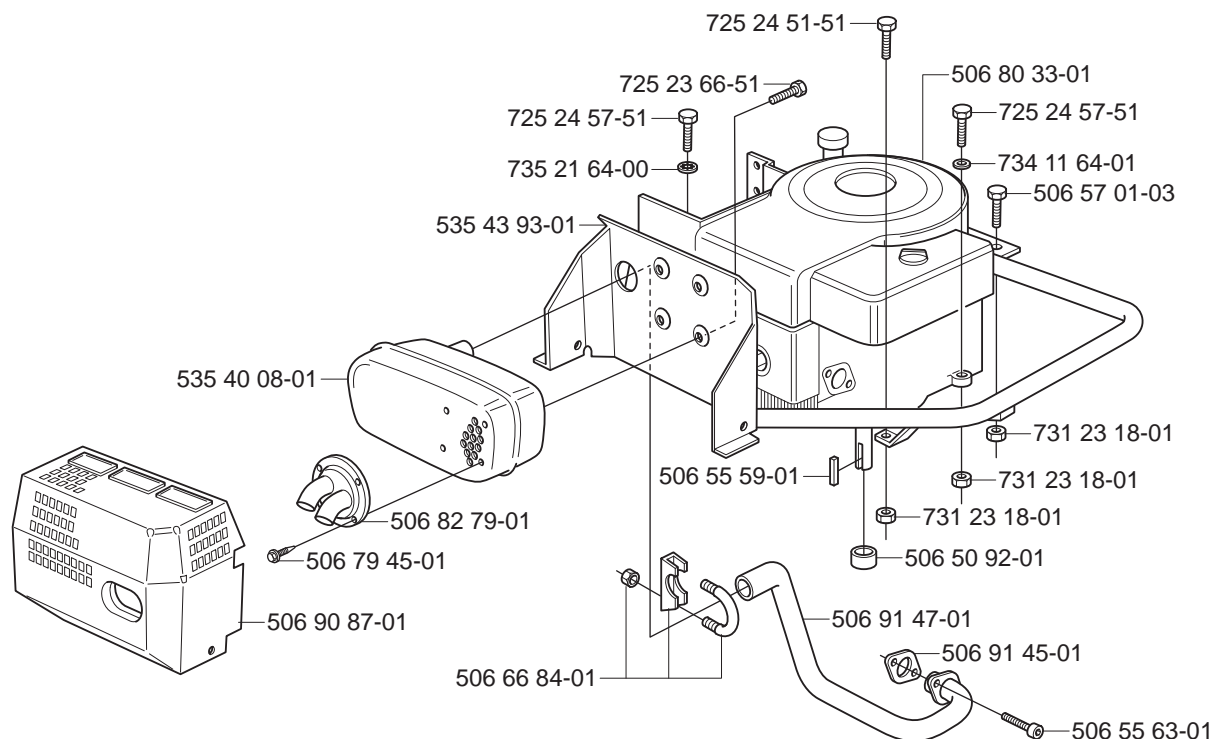
- *722 79 54-02
- 722 79 54-02*
- *506 91 36-01
- 732 21 18-01
- *506 91 36-02
- 506 83 94-01
- *506 59 74-01
- 535 43 96-01
- 734 11 37-41
- 506 91 34-01*
- 722 79 54-02*
- 506 96 93-01*
- 506 91 31-01
- 506 98 26-01
- 506 55 97-01
- 506 96 92-01
- 506 55 97-01
- 506 98 26-01
- 506 91 31-03
- 506 96 92-03
- 506 98 26-01
- 506 98 92-01
- 506 55 97-01
- 506 96 35-01
- 506 96 36-01
- 535 43 39-01

New part,
Neues teil,
Nouvelle piece,
Nueva pieza,

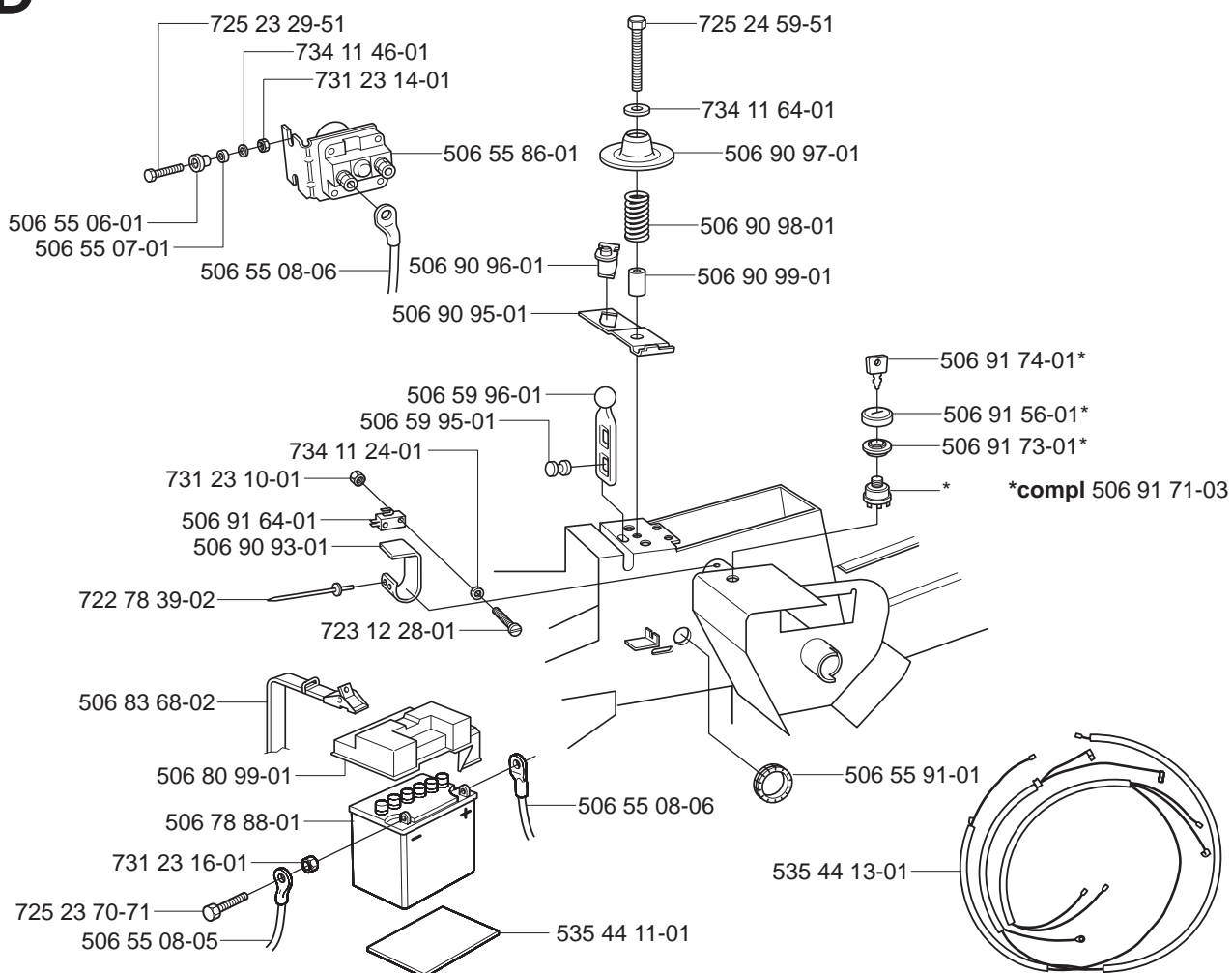
**New part,
Neues teil,
Nouvelle piece,
Nueva pieza,
Ny detalj**

XXX XX XX-XX

C



D

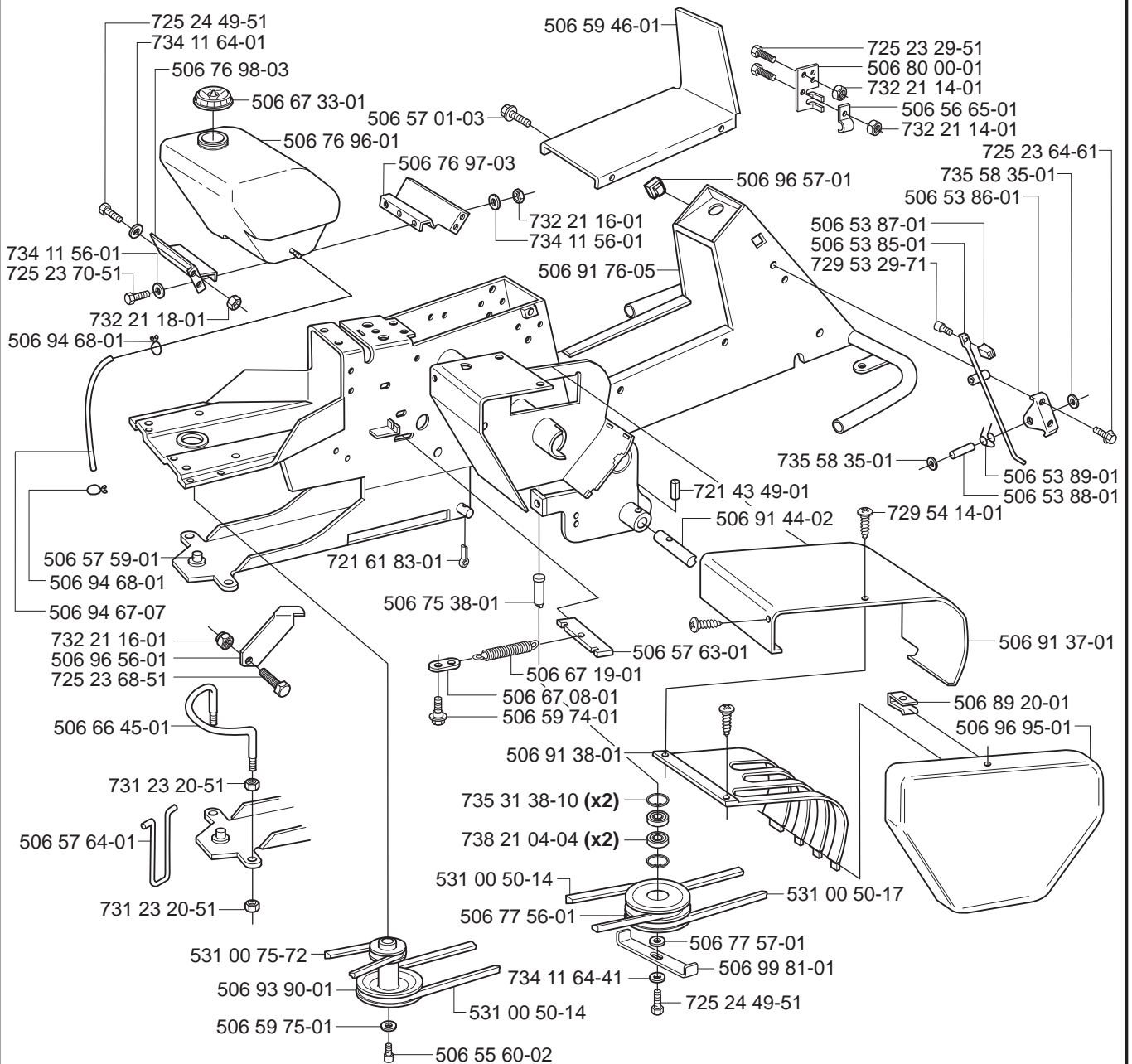


New part,
Neues teil,
Nouvelle piece,
Nueva pieza,
Ny detalj

xxx xx xx-xx

=

E



New part,
Neues teil,
Nouvelle piece,
Nueva pieza,
Ny detalj

xxx xx xx-xx

=

F

738 21 10-04

506 98 58-01

735 31 26-00

506 77 34-01

506 98 59-01

740 68 14-21

*506 98 61-01

*506 98 61-02

506 77 34-01

735 31 26-00

738 21 05-04

735 31 40-10

735 31 26-00

731 23 20-51

732 21 18-01**

734 11 64-41**

735 31 38-10**

738 21 04-04**

506 56 38-01**

506 54 35-01**

506 59 50-01**

725 24 59-51**

738 88 10-01**

506 66 56-01

****compl 506 98 78-01

****723 12 28-01

****734 11 24-01

****535 03 25-01

725 23 68-51

734 11 53-41****

506 98 79-01****

734 11 24-01****

731 23 10-01****

725 24 67-51 (x4)

725 24 67-51

725 24 51-51

506 91 87-02

506 98 74-01

732 21 14-01

732 21 14-01

725 24 62-51

725 24 59-51

506 98 72-01

725 23 64-61

506 56 65-01

506 98 77-01

*compl 535 40 60-01

* 506 88 99-01

725 24 93-71 (x2)

731 23 18-01

506 98 88-01

734 11 64-01 (x4)

731 23 18-01 (x4)

731 23 20-01

725 24 55-51

506 98 85-01***

506 98 86-01

506 94 69-01***

732 21 18-01***

734 11 64-41***

***compl 506 98 84-01

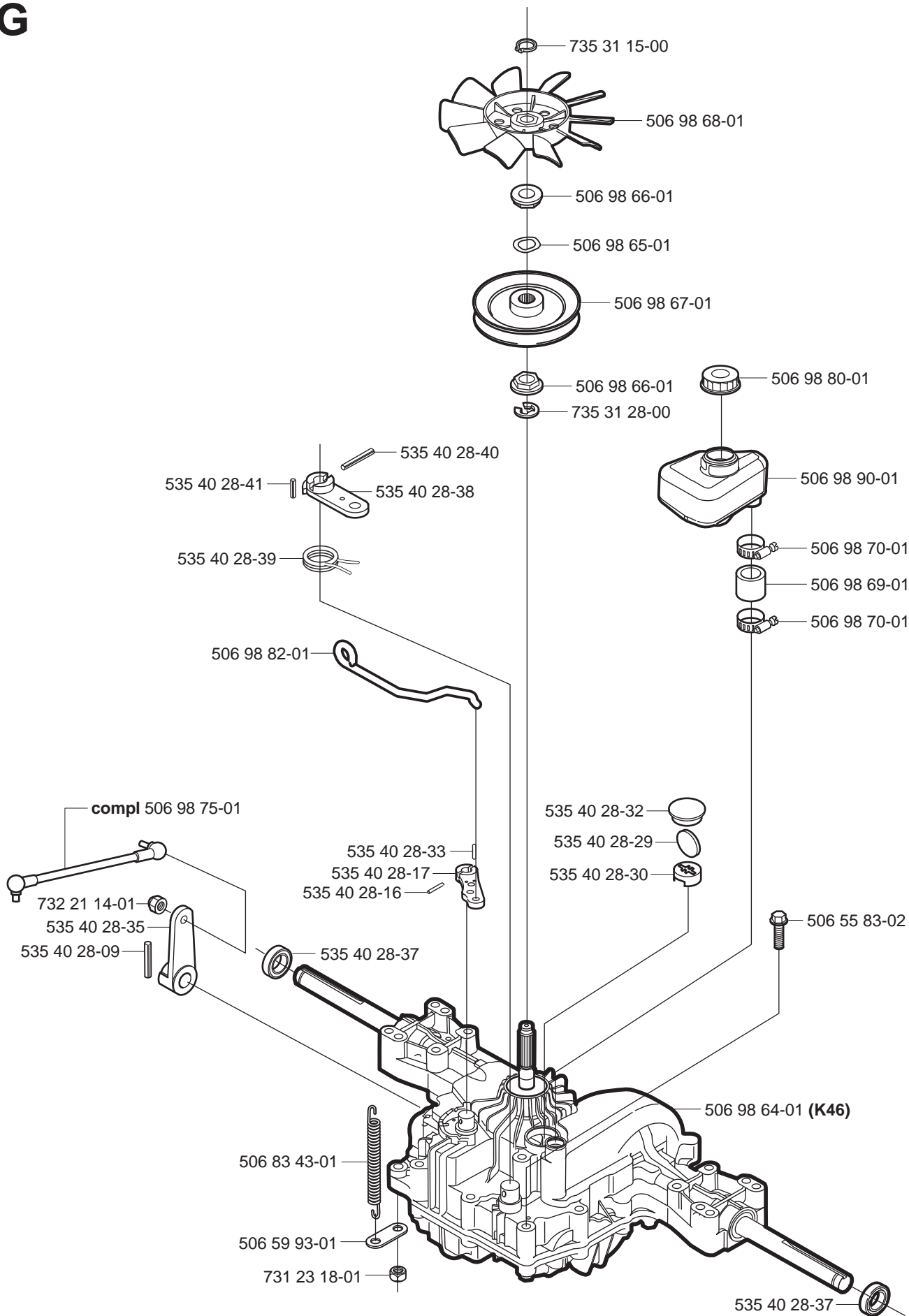
731 23 20-51

506 57 61-03

731 23 20-51

New part,
Neues teil,
Nouvelle piece,
Nueva pieza,
Ny detalj

G

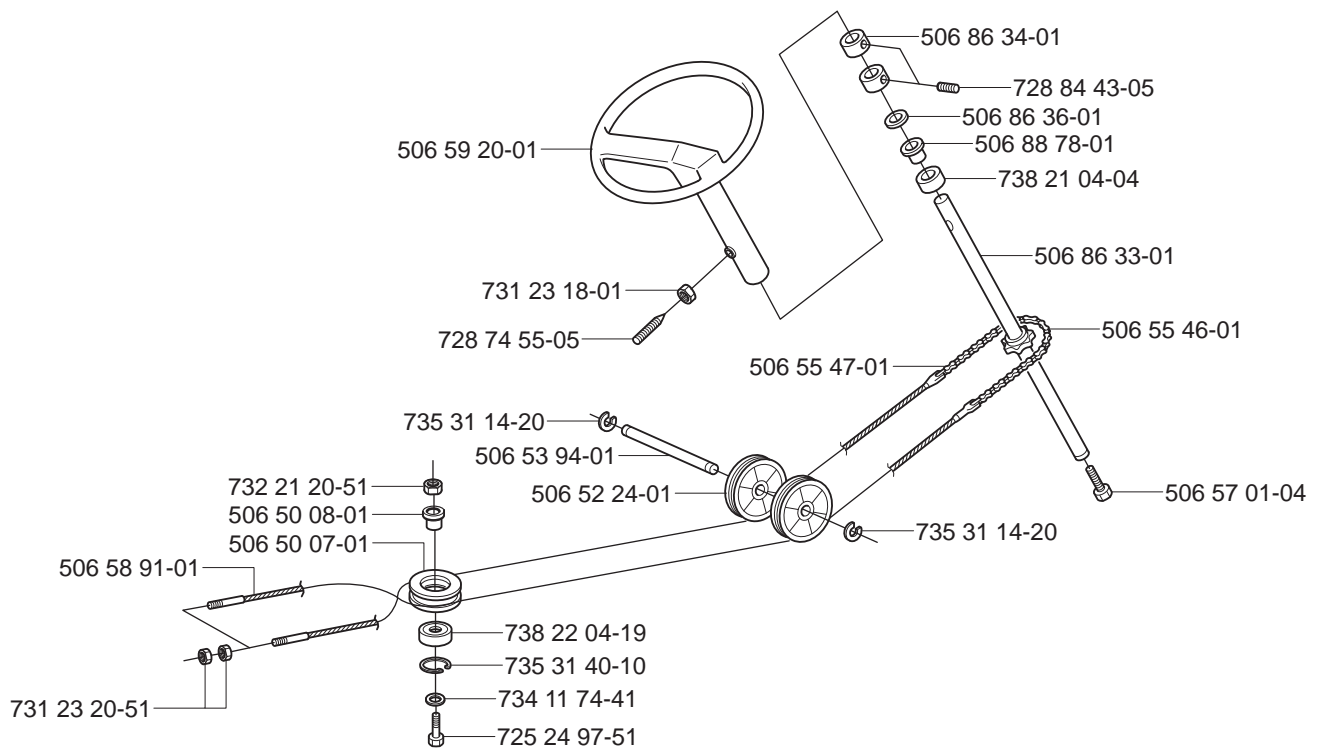


New part,
Neues teil,
Nouvelle piece,
Nueva pieza,
Ny detalj

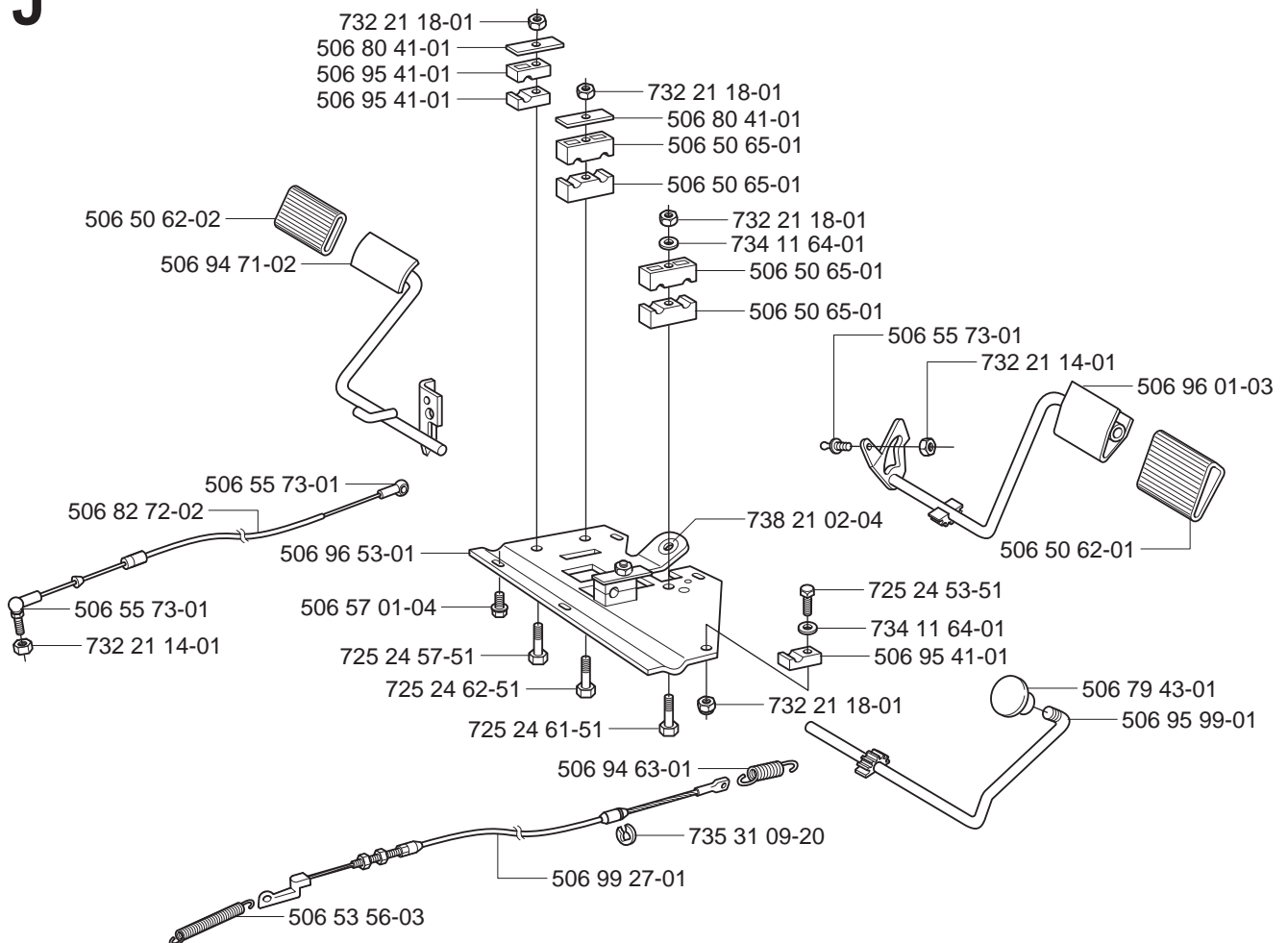
xxx xx xx-xx

=

H



J

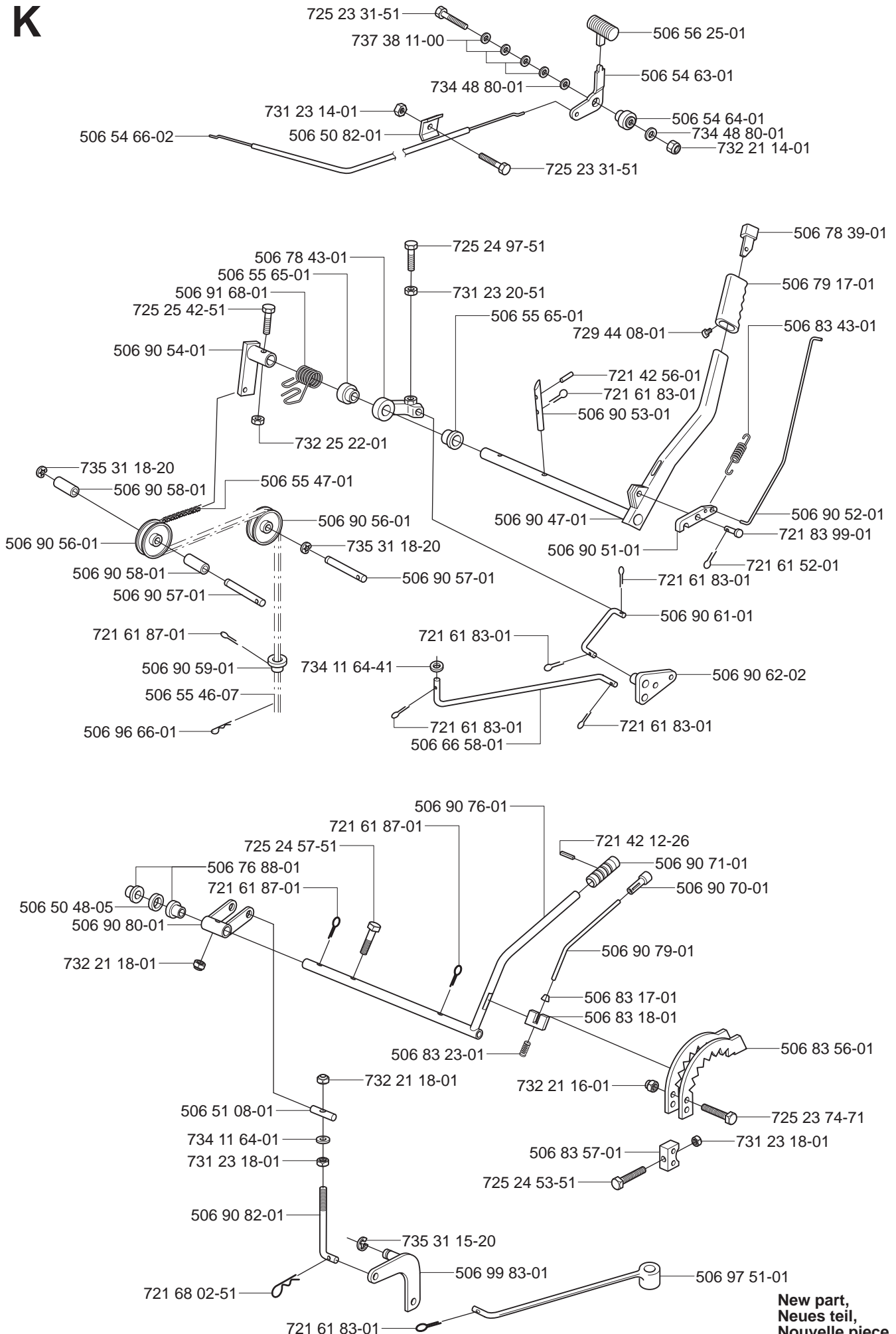


New part,
Neues teil,
Nouvelle piece,
Nueva pieza,
Ny detalj

xxx xx xx-xx

=

K



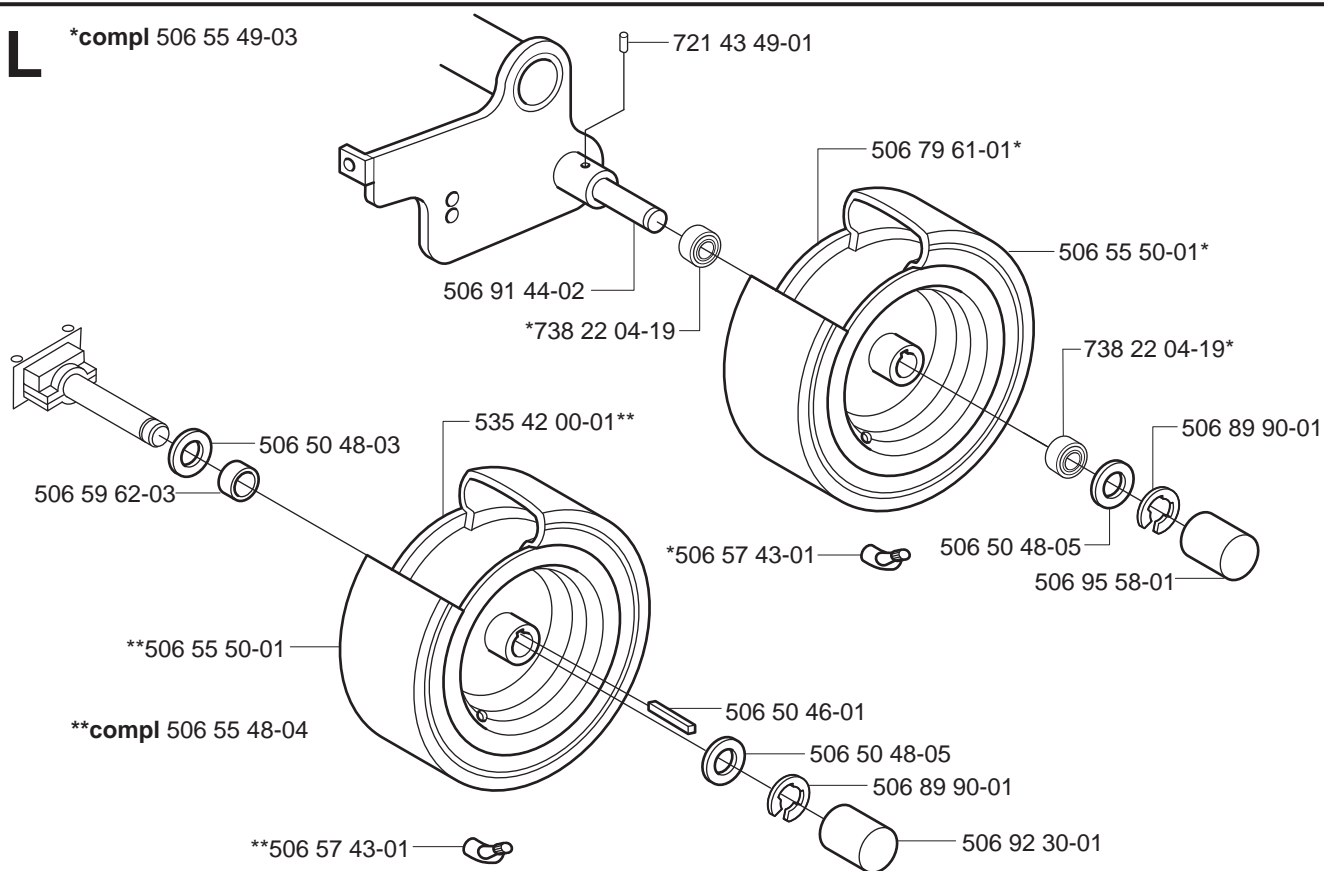
New part,
Neues teil,
Nouvelle piece,
Nueva pieza,
Ny detalj

xxx xx xx-xx

=

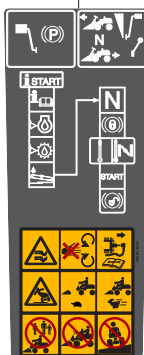
L

*compl 506 55 49-03



M

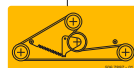
Warning
506 94 48-01



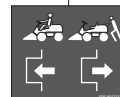
506 99 96-01



506 78 97-01



506 94 47-01



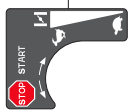
506 58 45-01



535 43 20-01



506 84 28-01



506 84 28-03



506 91 57-01



535 47 25-01



535 44 98-01



535 44 99-01



535 45 00-01



535 45 01-01 (x2)



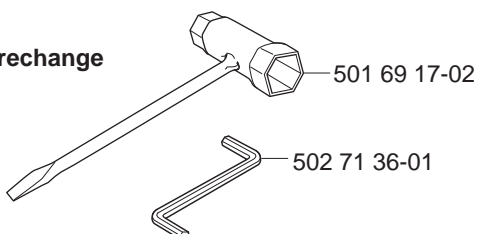
535 47 24-01

Rider 13 R special

535 47 24-02

N

Leverans endast som reservdel
Delivery as spare part only
Nur als Ersatzteil lieferbar
Livrabl seulement comme pièce de rechange
Solo como repuesto
Zasilá se jenom jako náhradni díl

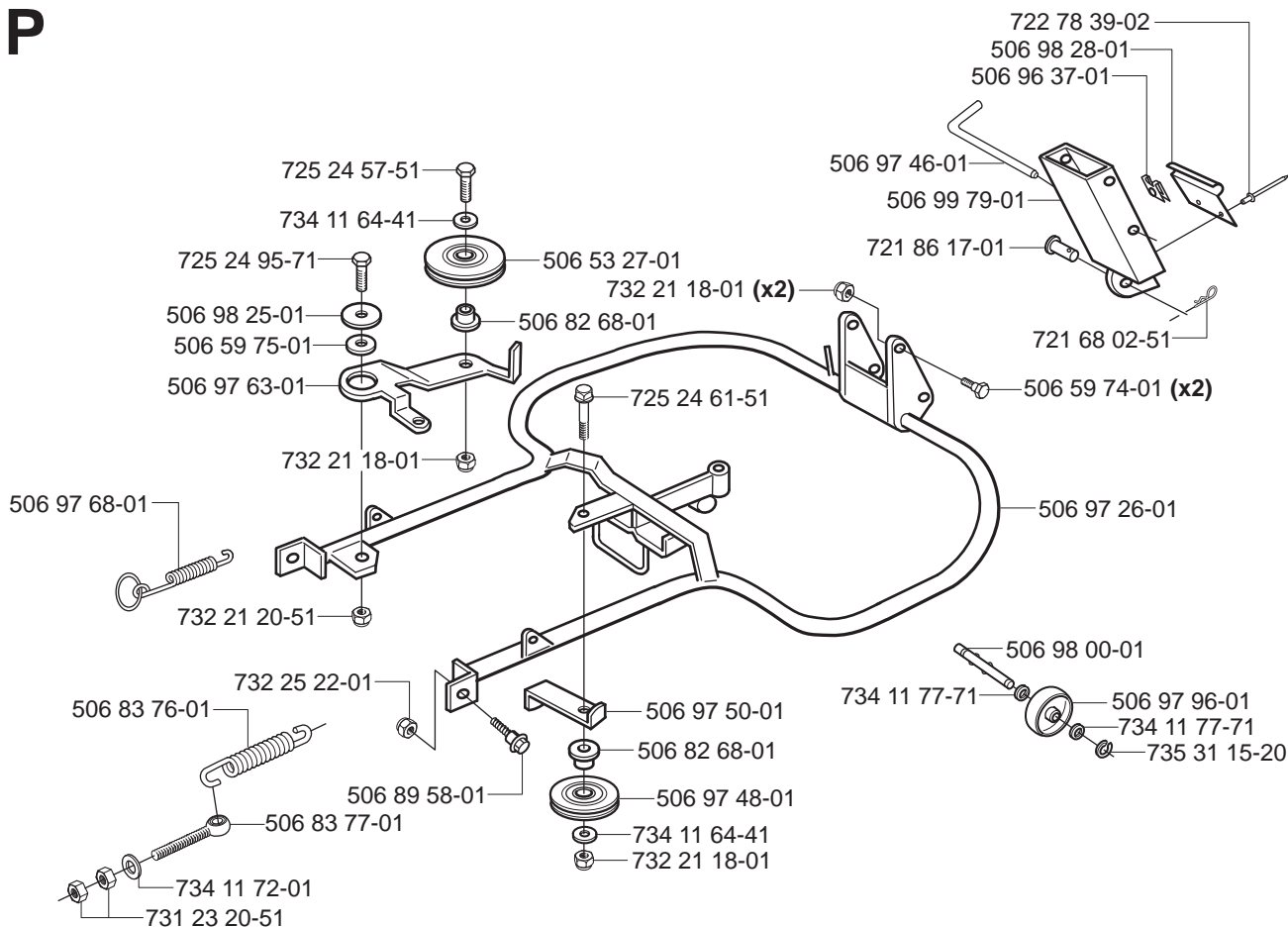


New part,
Neues teil,
Nouvelle piece,
Nueva pieza,
Ny detalj

xxx xx xx-xx

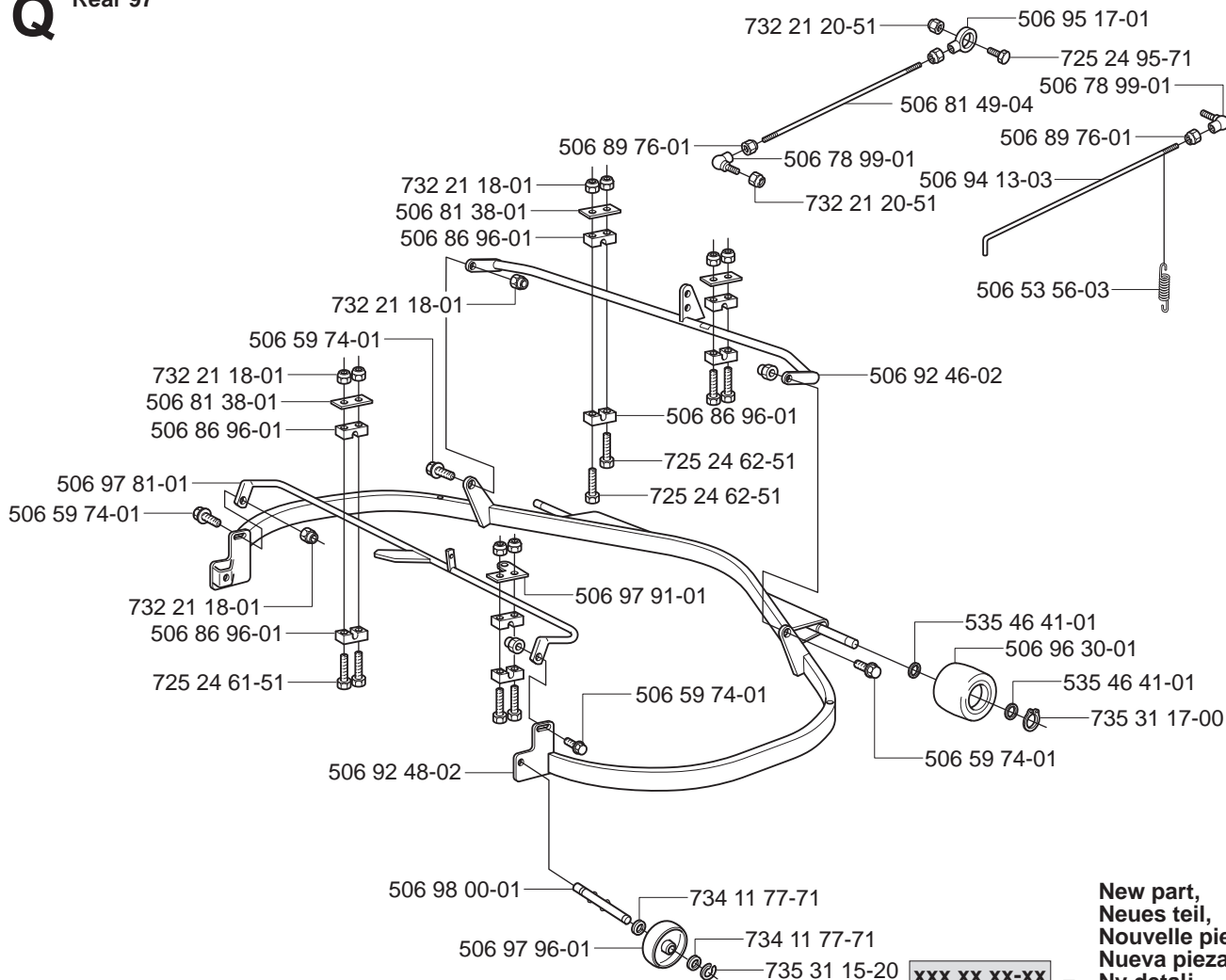
=

P



Q

Rear 97



New part,
Neues teil,
Nouvelle piece,
Nueva pieza,
Ny detalj

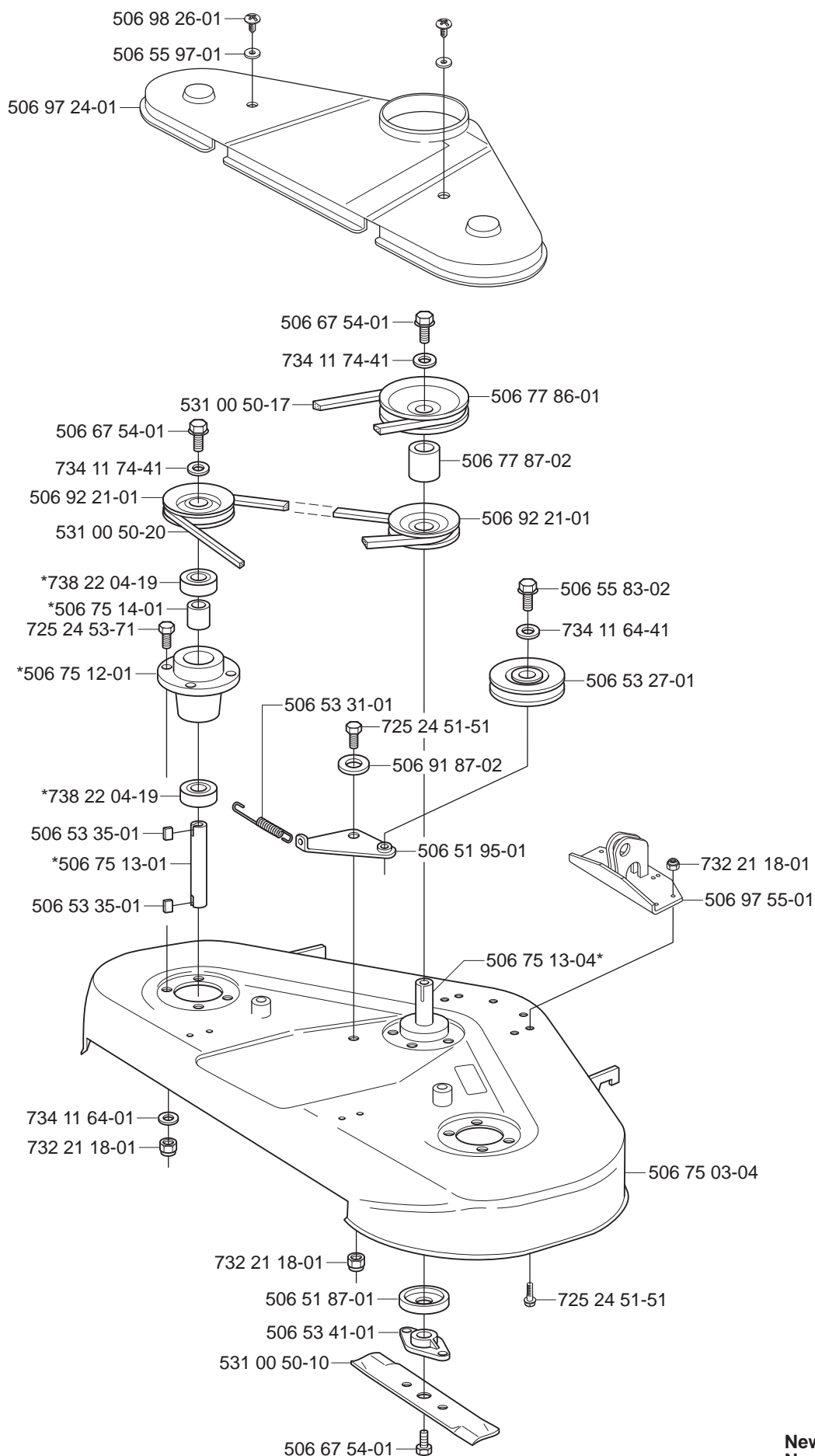
xxx xx xx-xx =

R

Rear 97

*compl 506 75 11-01 Yttre. Outer. Exterieur. Äusser. Ulko.

*compl 506 75 11-04 Mitten. Centre. Centre. Zentrum. Keski.



New part,
Neues teil,
Nouvelle piece,
Nueva pieza,
Ny detalj

xxx xx xx-xx

=