

Rider 16

Spare parts

Ersatzteile

Pièces détachées

Reserve onderdelen

Repuestos

Reservdelar

Exploded view diagram of a seat cushion assembly. The components are labeled with part numbers:

- 506 55 62-01: Seat cushion cover
- 506 66 88-01: Spring clip
- 506 50 99-01: Spring clip
- 506 56 55-01: Spring clip
- 506 91 53-01: Spring
- 734 11 74-41: Washer
- 725 24 91-61: Bolt
- 735 31 12-00: Bolt
- 41: Washer
- 01: Washer
- 4: Washer

B compli 506 98 46-05

*722 79 54-02
722 79 54-02*

506 91 34-01*

722 79 54-02*

506 96 35-01
506 96 36-01

535 43 39-01

*506 91 36-01

506 96 93-01*

732 21 18-01

*506 91 36-02

506 83 94-01

*506 59 74-01

506 91 31-01

506 98 26-01

506 55 97-01

506 96 92-01

506 55 97-01

506 98 26-01

506 91 31-03

535 43 96-01

734 11 37-41

506 96 92-03

506 98 26-01

506 98 92-01

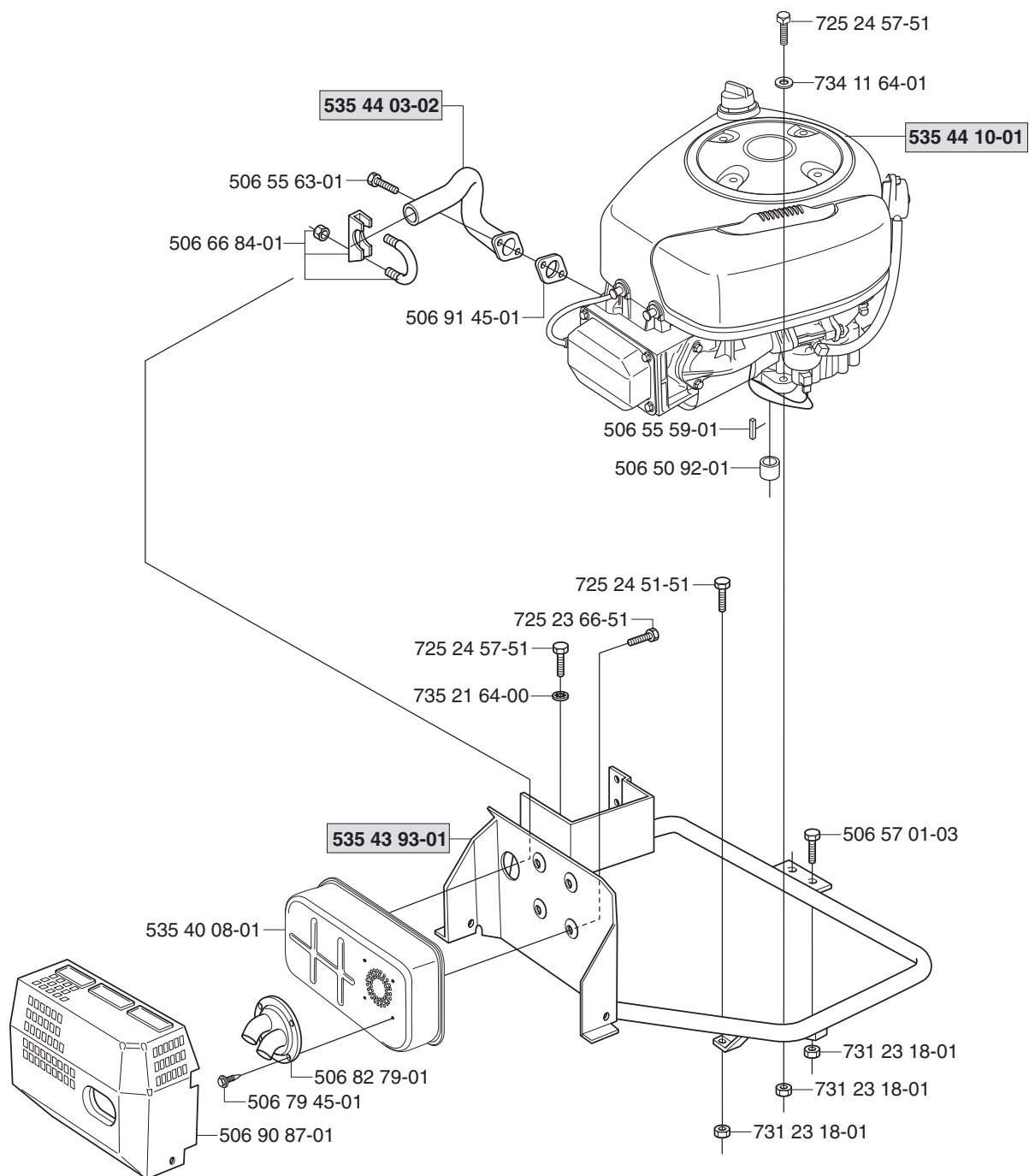
506 55 97-01

**New part,
Neues teil,
Nouvelle piece
Nueva pieza.**

**New part,
Neues teil,
Nouvelle piece,
Nueva pieza,
Ny detalj**

XXX XX XX-XX

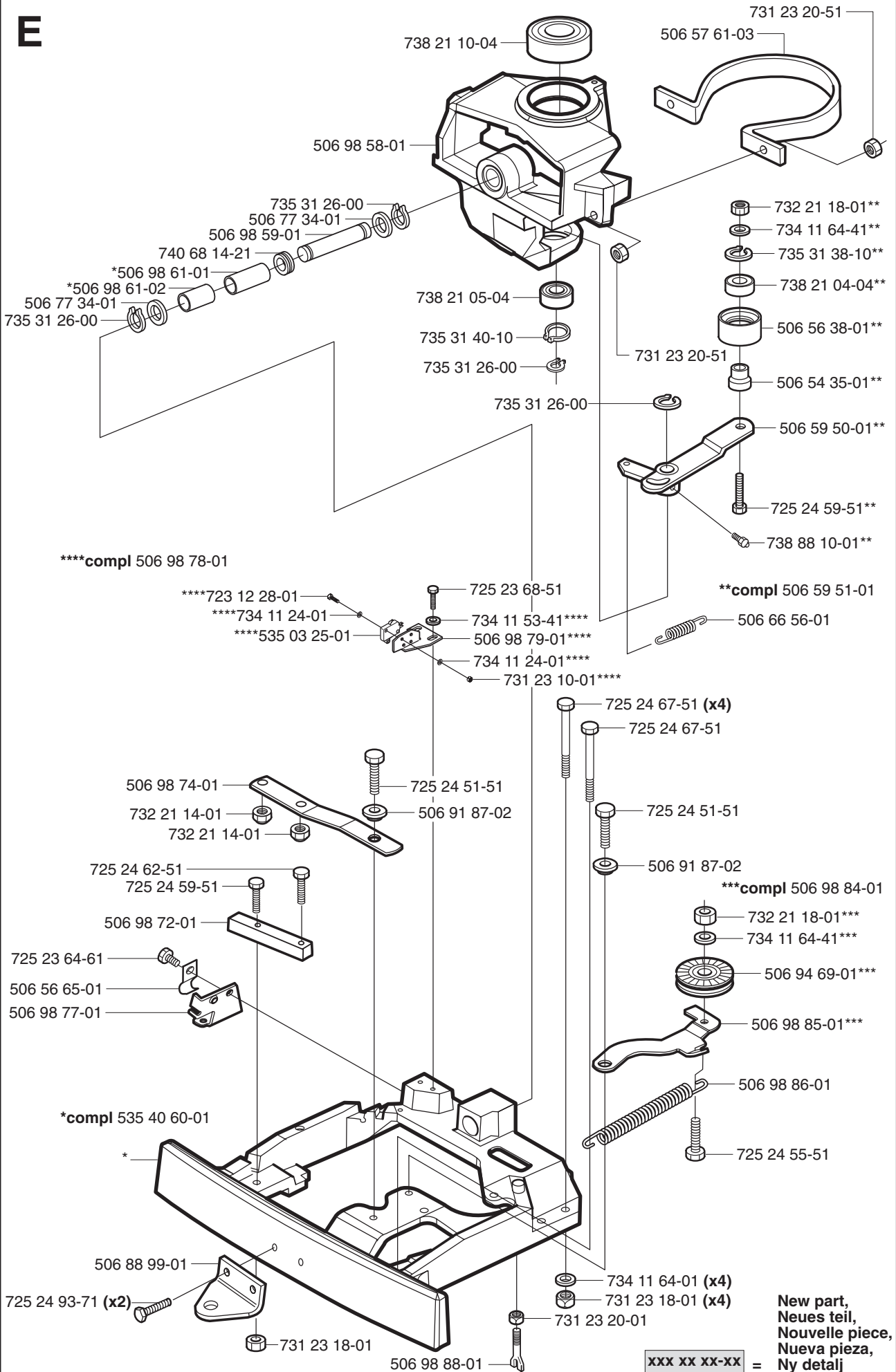
C



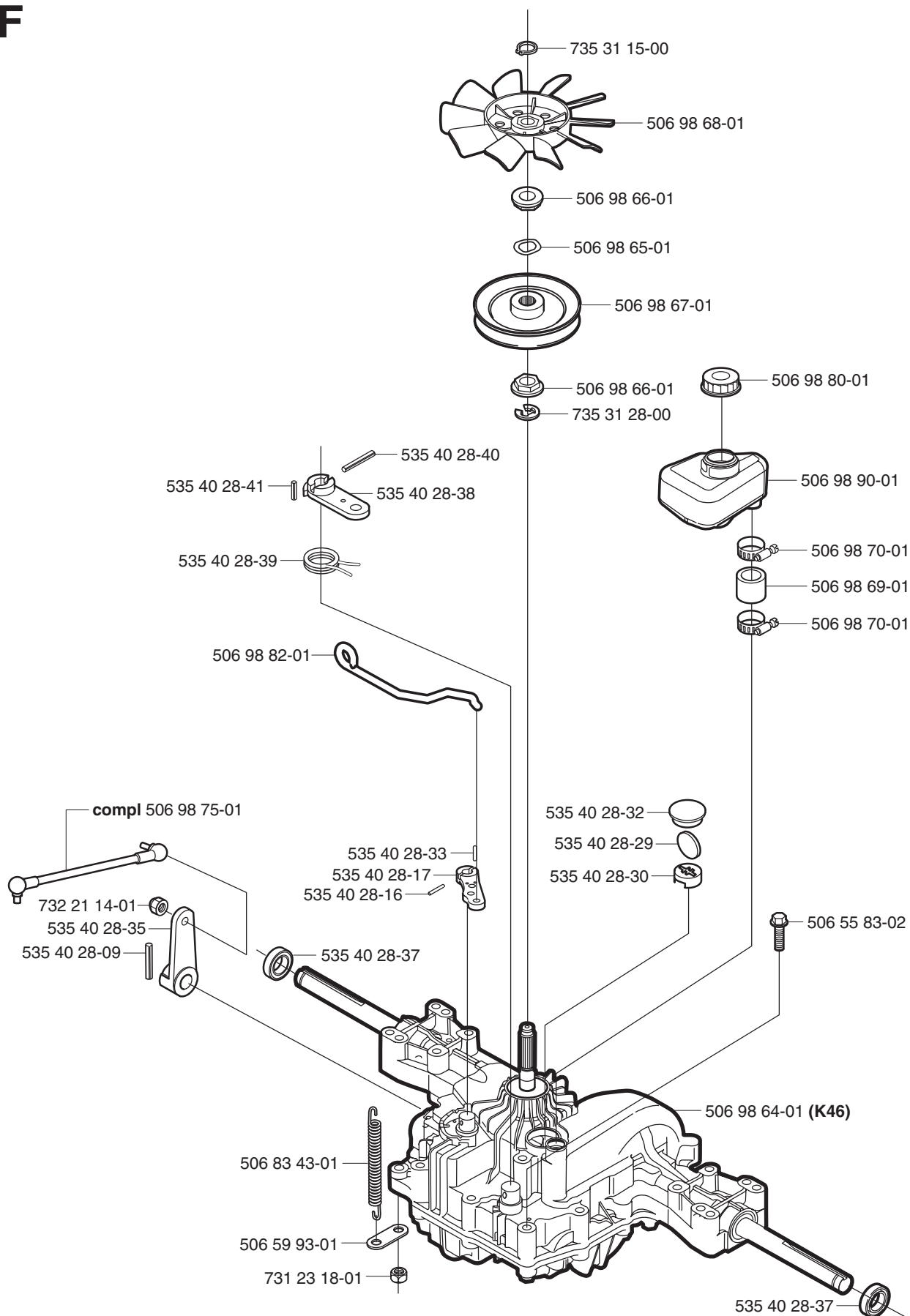
New part,
Neues teil,
Nouvelle piece,
Nueva pieza,
Ny detalj

xxx xx xx-xx =

E



F

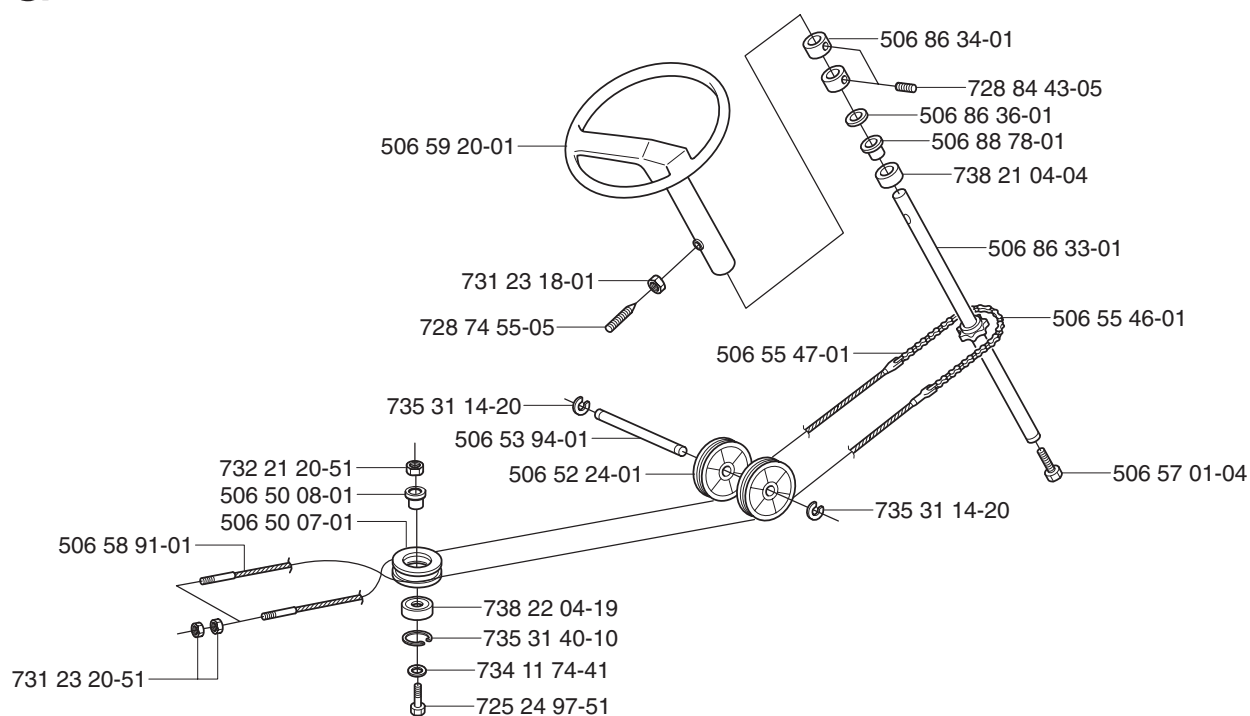


New part,
Neues teil,
Nouvelle piece,
Nueva pieza,
Ny detalj

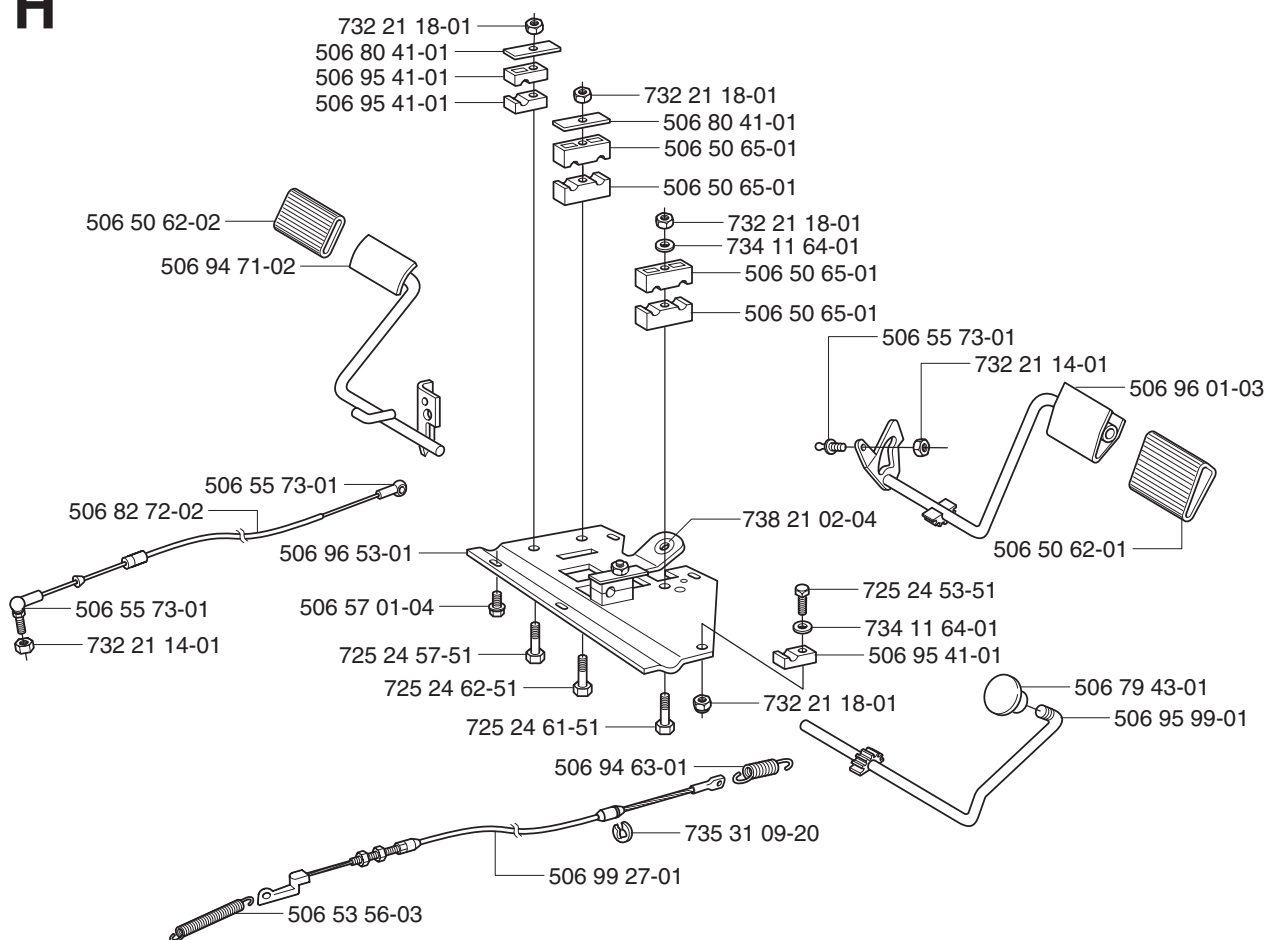
xxx xx xx-xx

=

G



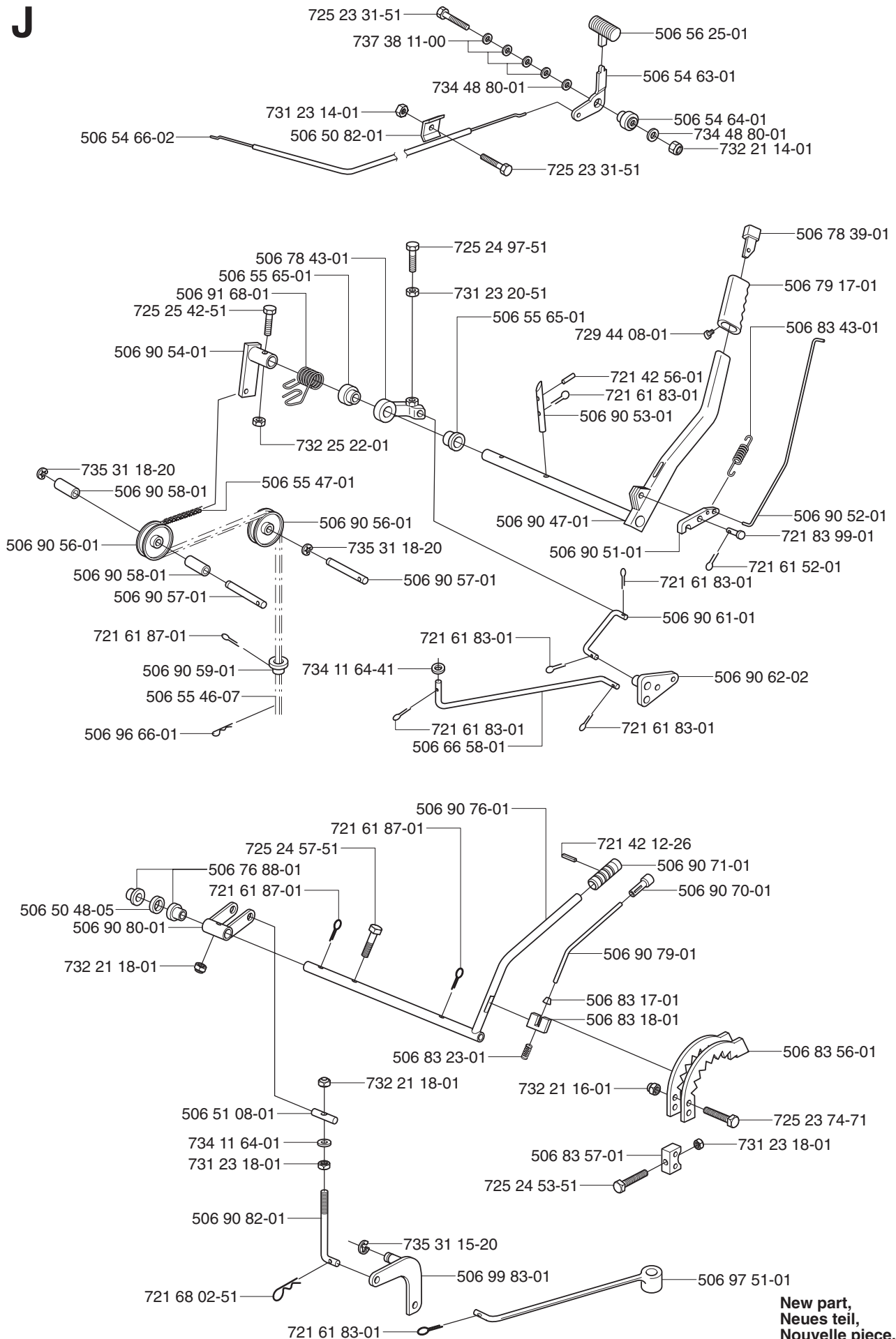
H



New part,
Neues teil,
Nouvelle piece,
Nueva pieza,
Ny detalj

xxx xx xx-xx =

J

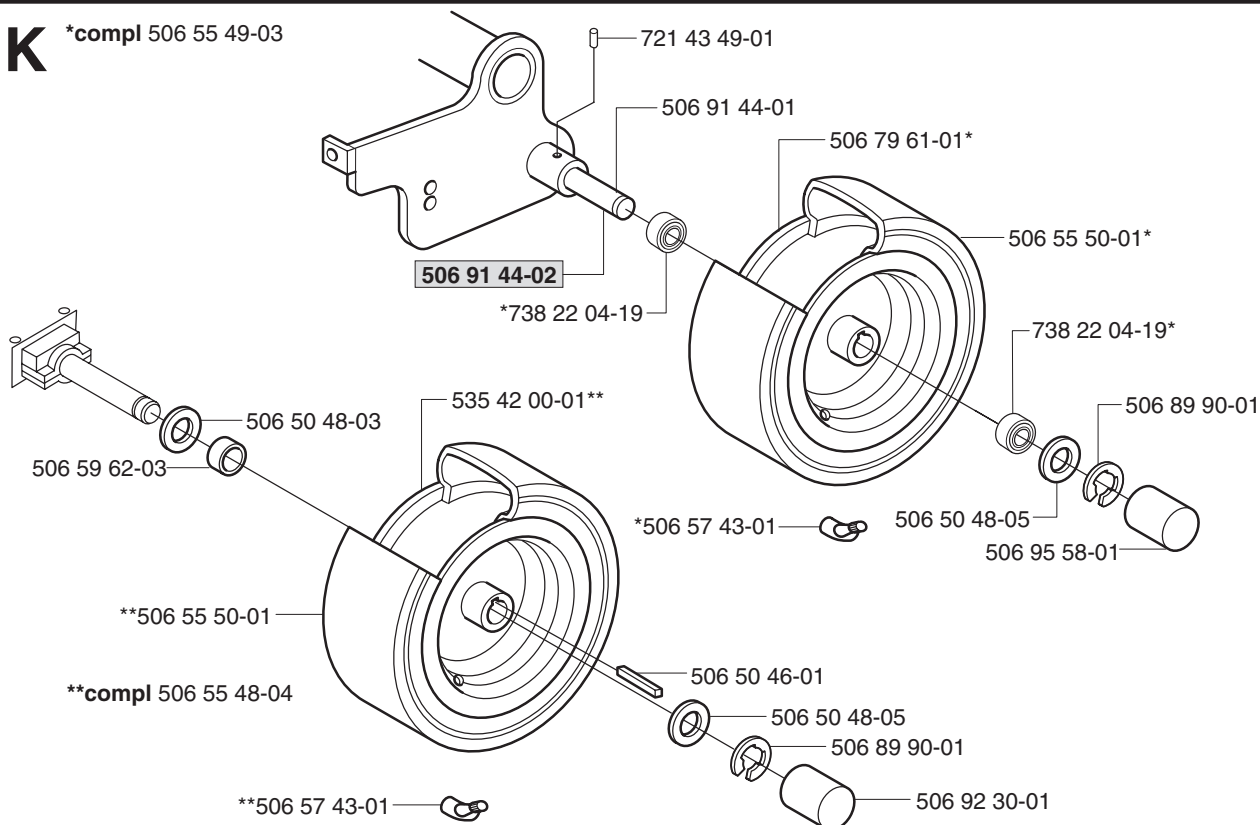


New part,
Neues teil,
Nouvelle piece,
Nueva pieza,
Ny detalj

xxx xx xx-xx =

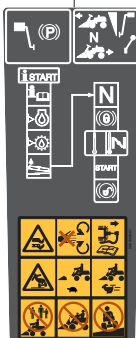
K

*compl 506 55 49-03



L

Warning
506 94 48-01



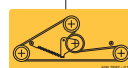
506 99 96-01



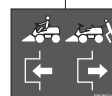
535 41 52-01



506 78 97-01



506 94 47-01



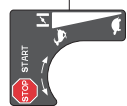
506 58 45-01



535 43 20-01



506 84 28-01



506 84 28-03



506 91 57-01



535 44 98-01

Husqvarna

535 44 99-01

Husqvarna

535 45 00-01



535 45 01-01 (x2)

Husqvarna

Husqvarna

535 44 97-01

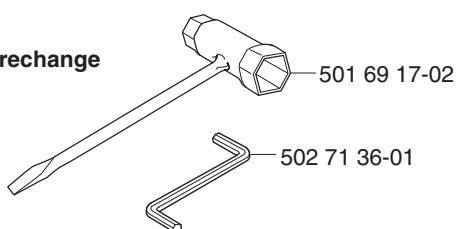
Rider 16

Rider 16

535 44 97-02

M

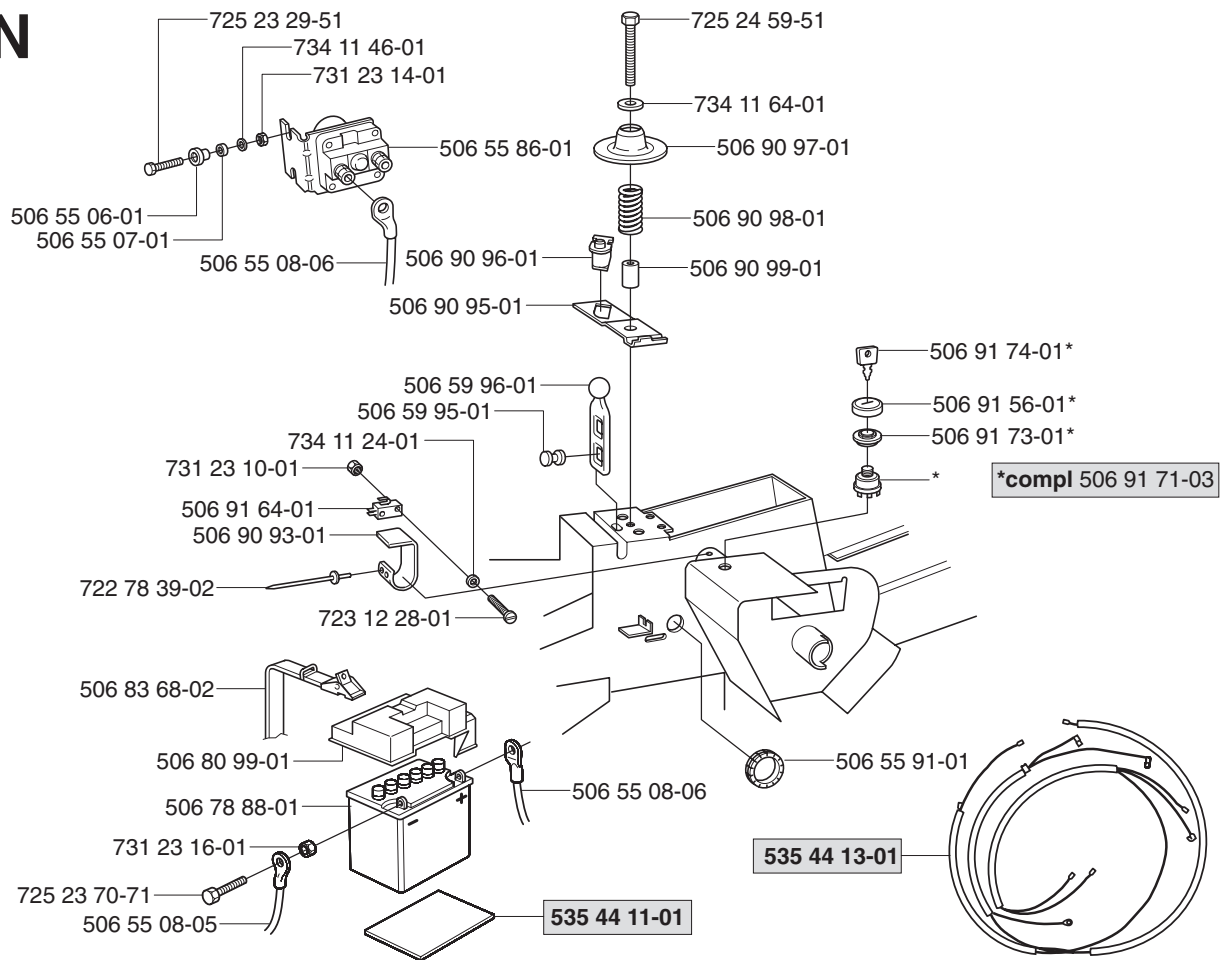
Leverans endast som reservdel
Delivery as spare part only
Nur als Ersatzteil lieferbar
Livable seulement comme pièce de rechange
Solo como repuesto
Zasilá se jenom jako náhradni díl



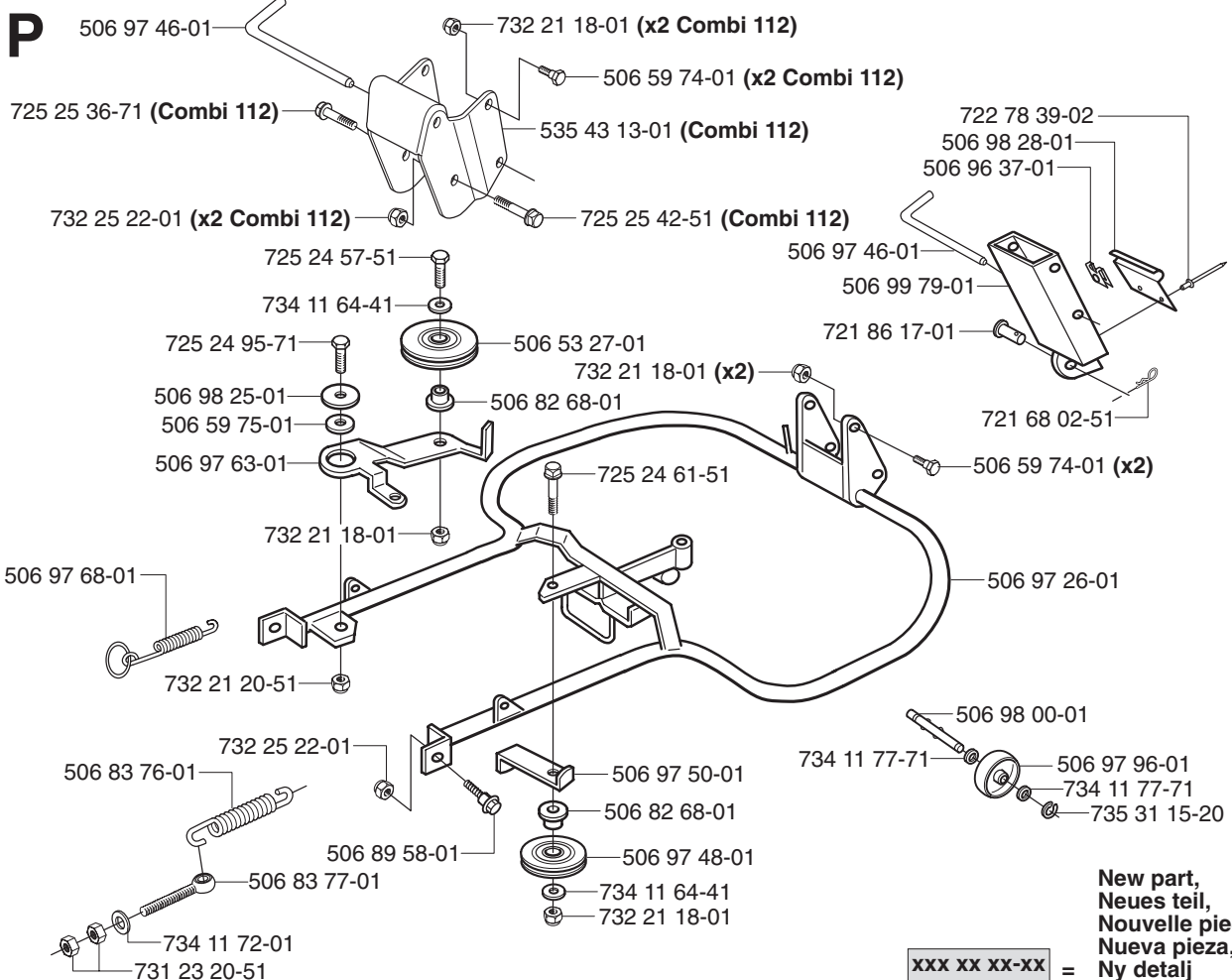
xxx xx xx-xx

New part,
Neues teil,
Nouvelle piece,
Nueva pieza,
Ny detalj

N

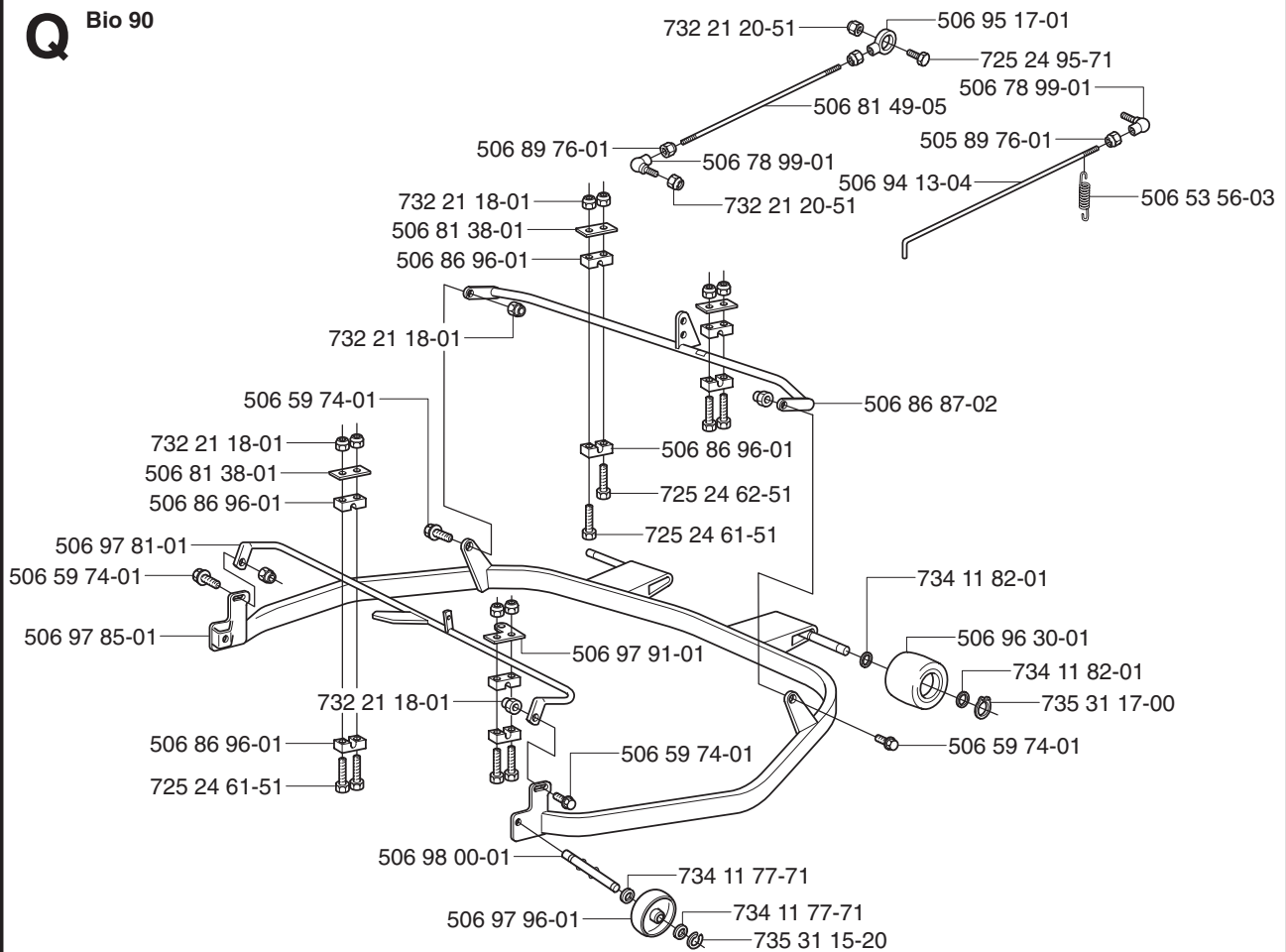
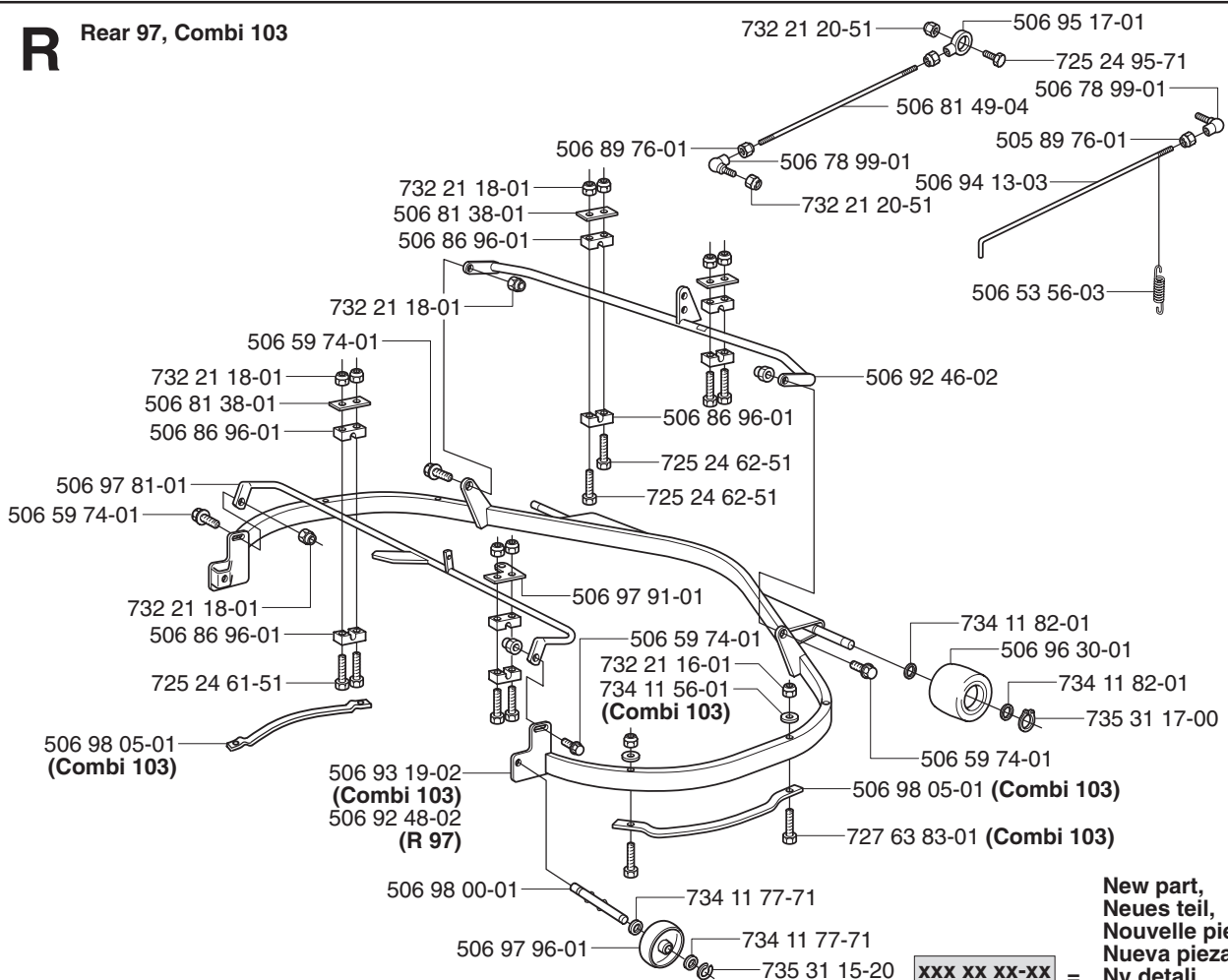


P



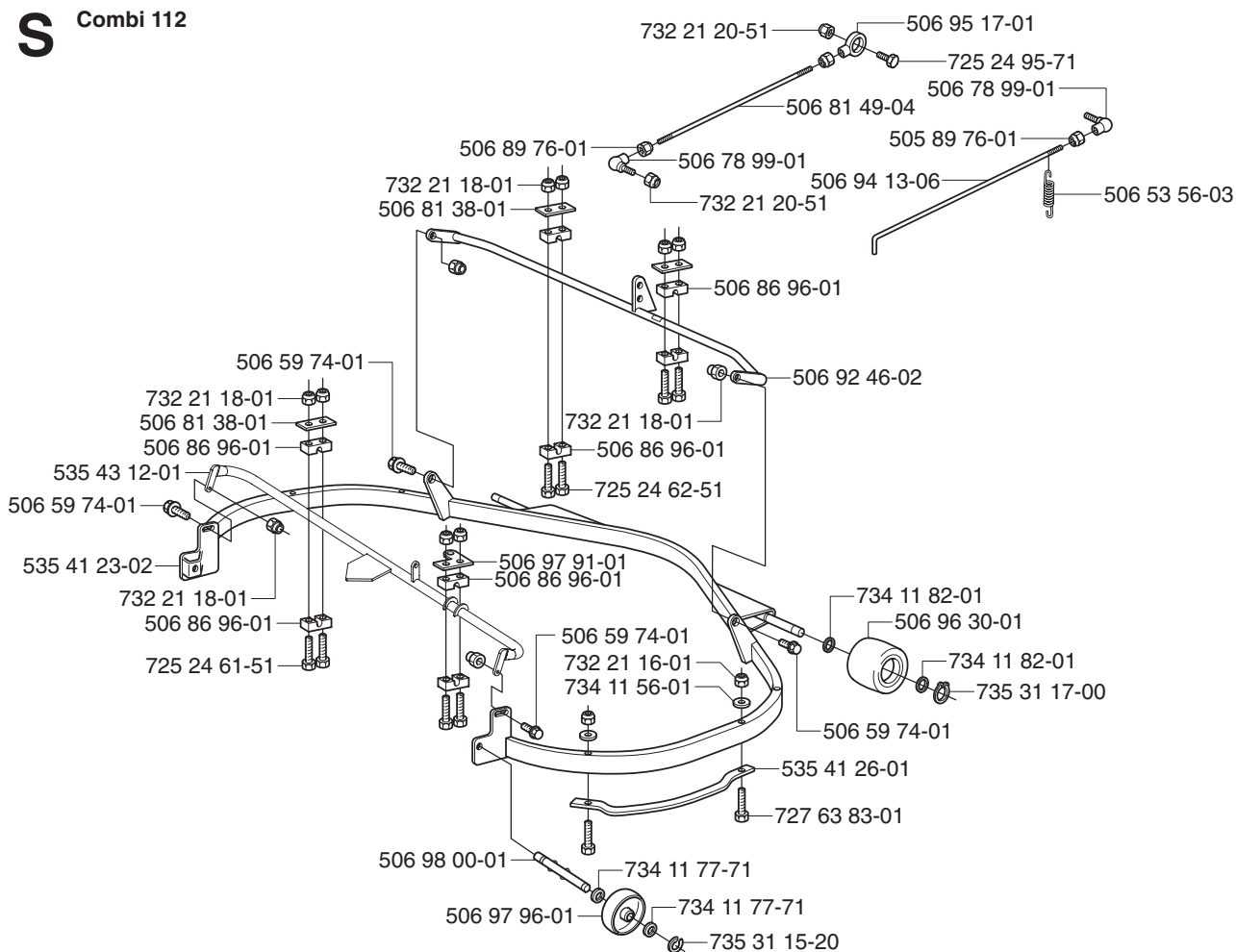
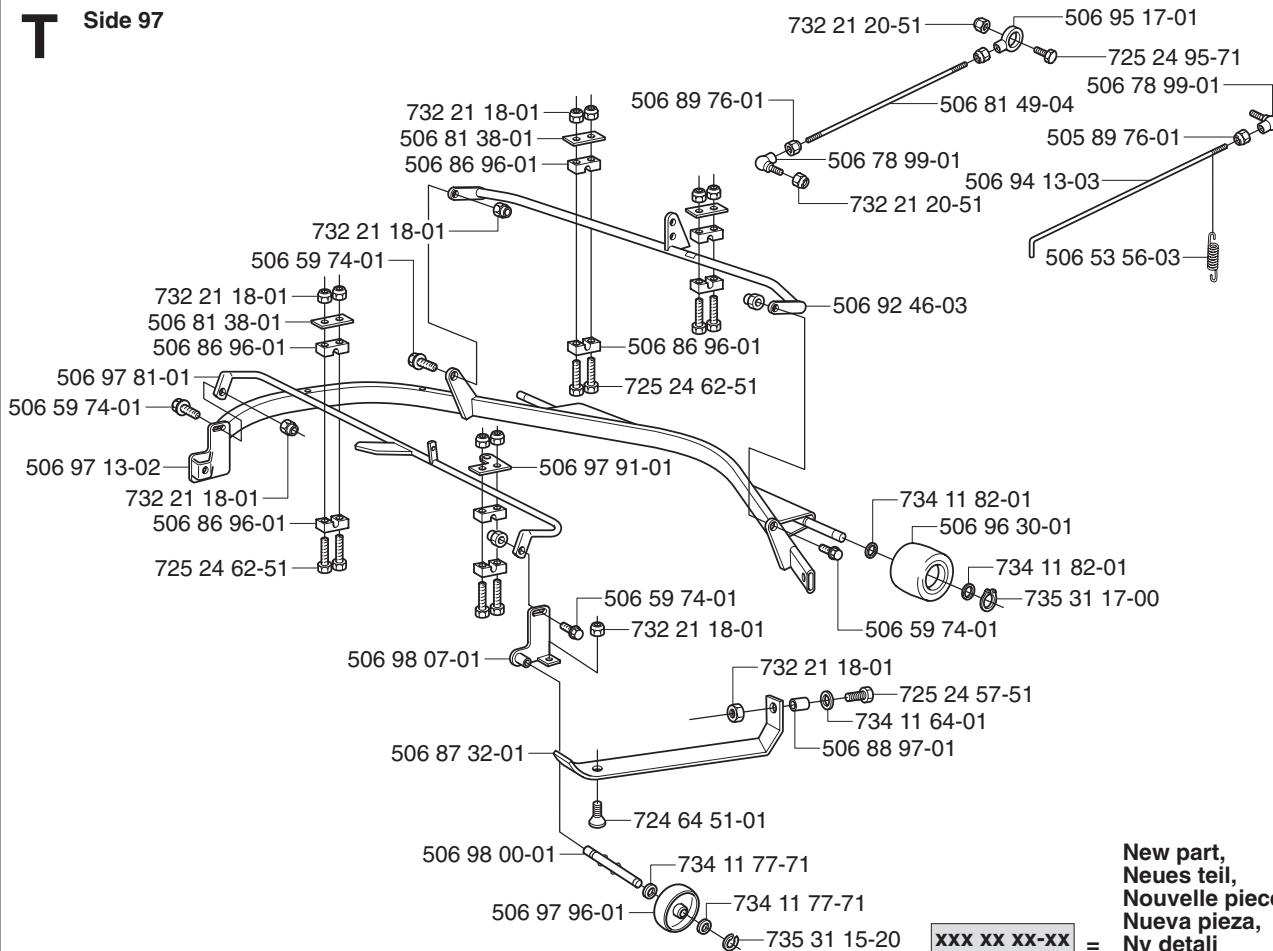
New part,
Neues teil,
Nouvelle piece,
Nueva pieza,
Ny detalj

xxx xx xx-xx =

Q**Bio 90****R****Rear 97, Combi 103**

**New part,
Neues teil,
Nouvelle piece,
Nueva pieza,
Ny detalj**

xxx xx xx-xx =

S**Combi 112****T****Side 97**

**New part,
Neues teil,
Nouvelle piece,
Nueva pieza,
Ny detalj**

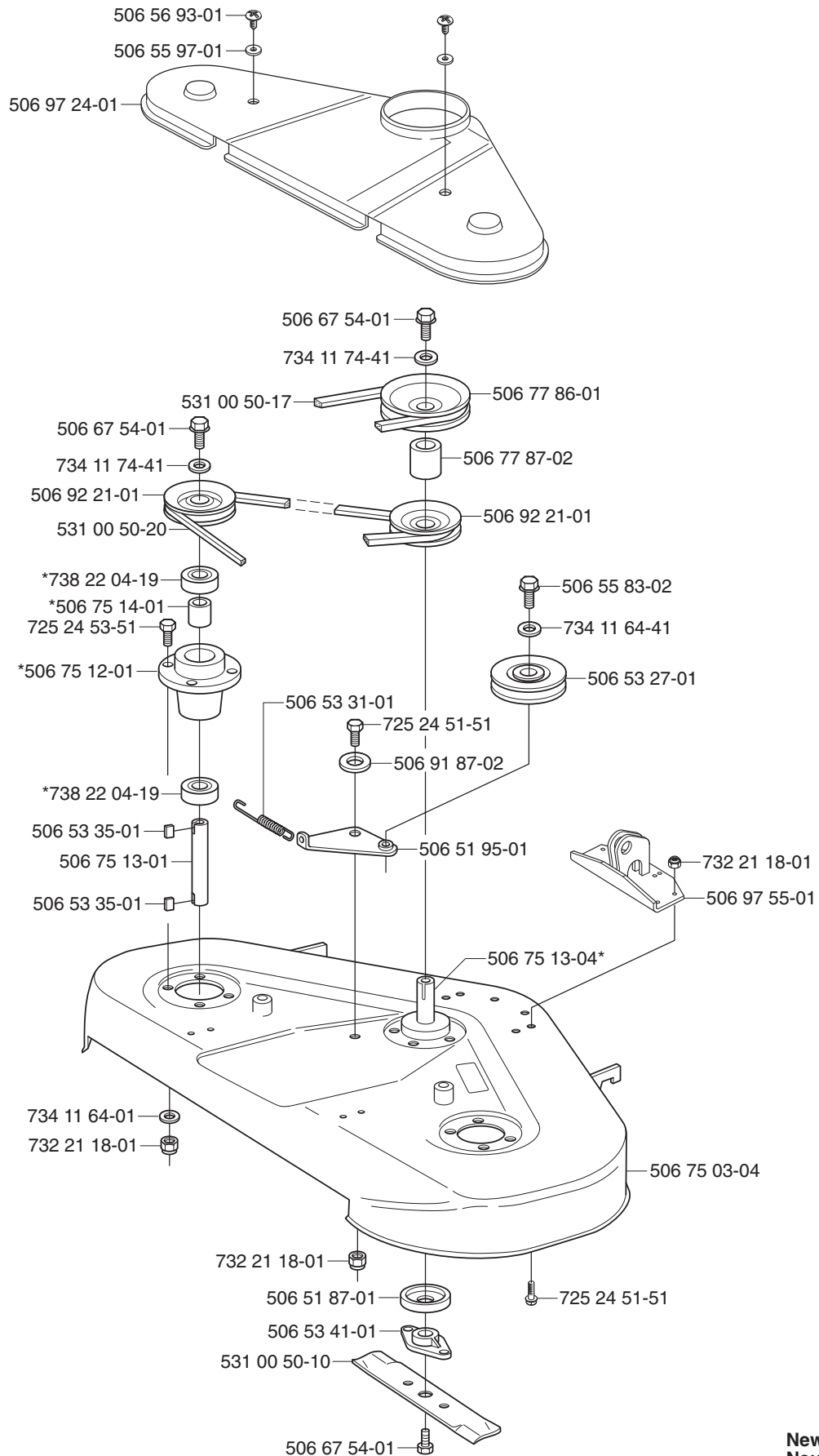
xxx xx xx-xx =

U

Rear 97

*compl 506 75 11-01 Yttre. Outer. Exterieur. Äusser. Ulko.

*compl 506 75 11-04 Mitten. Centre. Centre. Zentrum. Keski.



New part,
Neues teil,
Nouvelle piece,
Nueva pieza,
Ny detalj

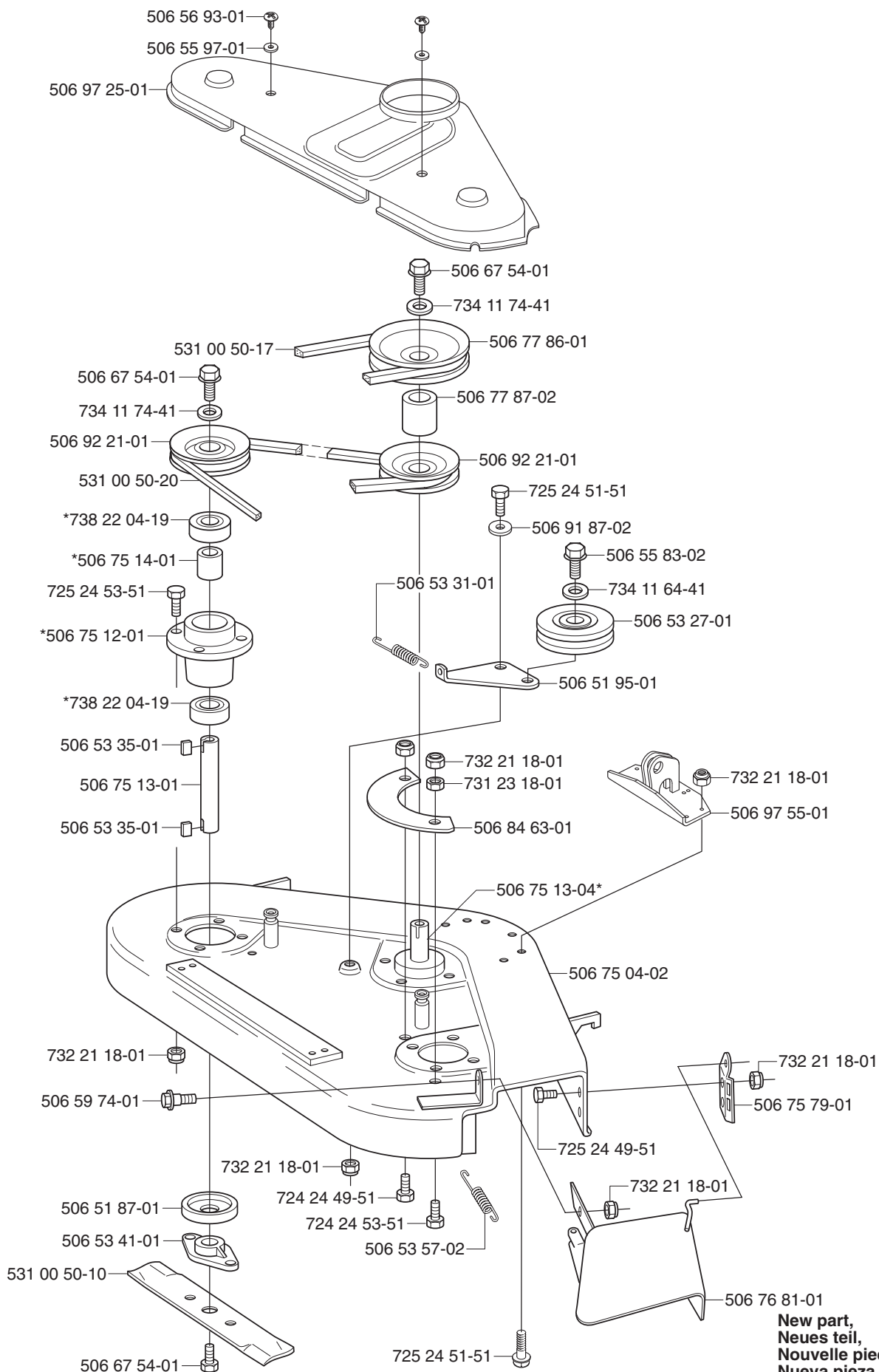
xxx xx xx-xx =

V

Side 97

*compl 506 75 11-01 Yttre. Outer. Exterieur. Äusser. Ulko.

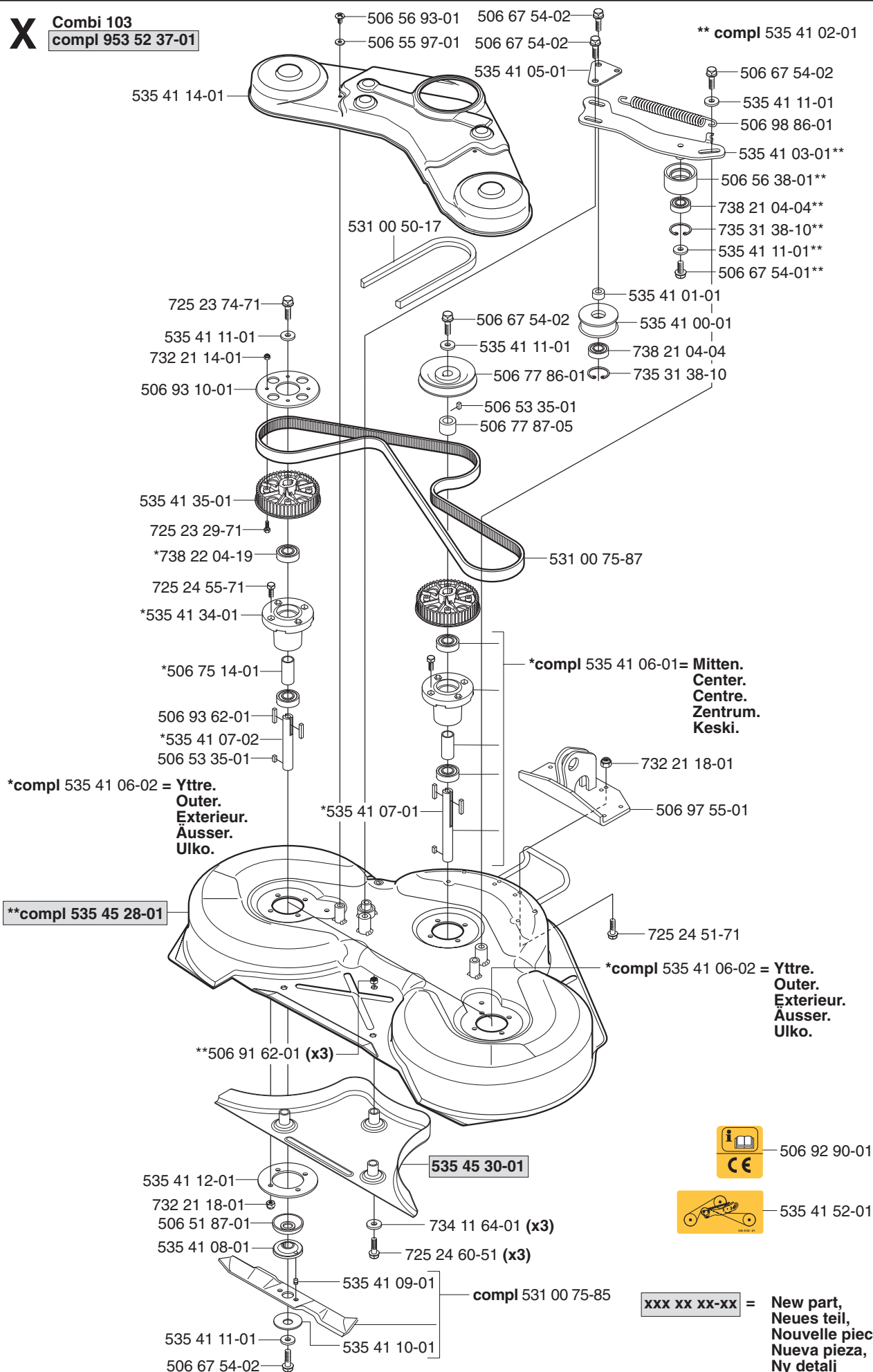
*compl 506 75 11-04 Mitten. Centre. Centre. Zentrum. Keski.

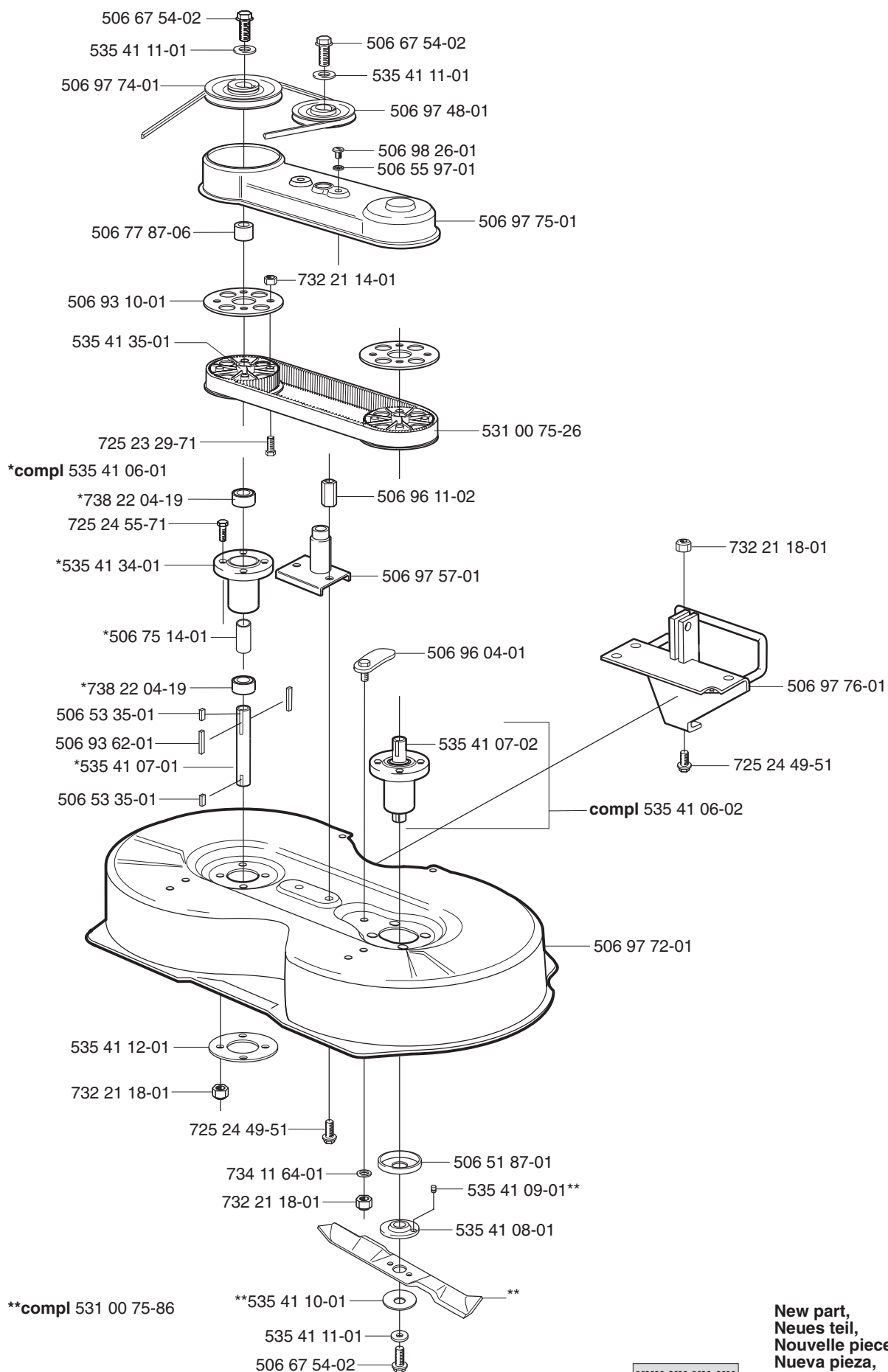


New part,
Neues teil,
Nouvelle piece,
Nueva pieza,
Ny detalj

xxx xx xx-xx =

X Combi 103
compl 953 52 37-01





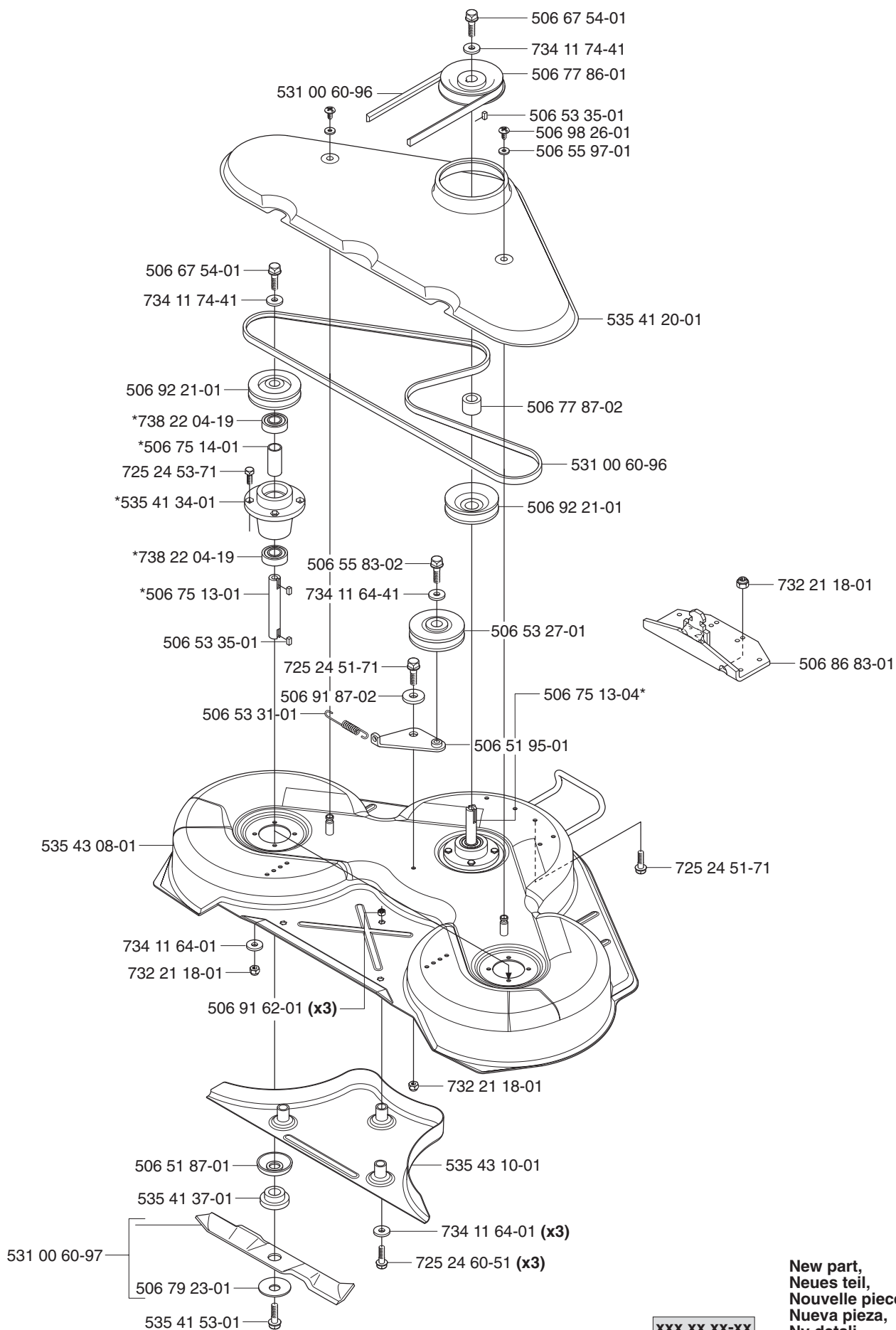
**compl 531 00 75-86

**535 41 10-01

xxx xx xx-xx

=

New part,
Neues teil,
Nouvelle piece,
Nueva pieza,
Ny detalj

Z**Combi 112*****compl 506 75 11-01 Yttre. Outer. Exterieur. Äusser. Ulko.*****compl 506 75 11-04 Mitten. Centre. Centre. Zentrum. Keski.**

xxx xx xx-xx =

New part,
Neues teil,
Nouvelle piece,
Nueva pieza,
Ny detalj