

Rider 16

Spare parts

Ersatzteile

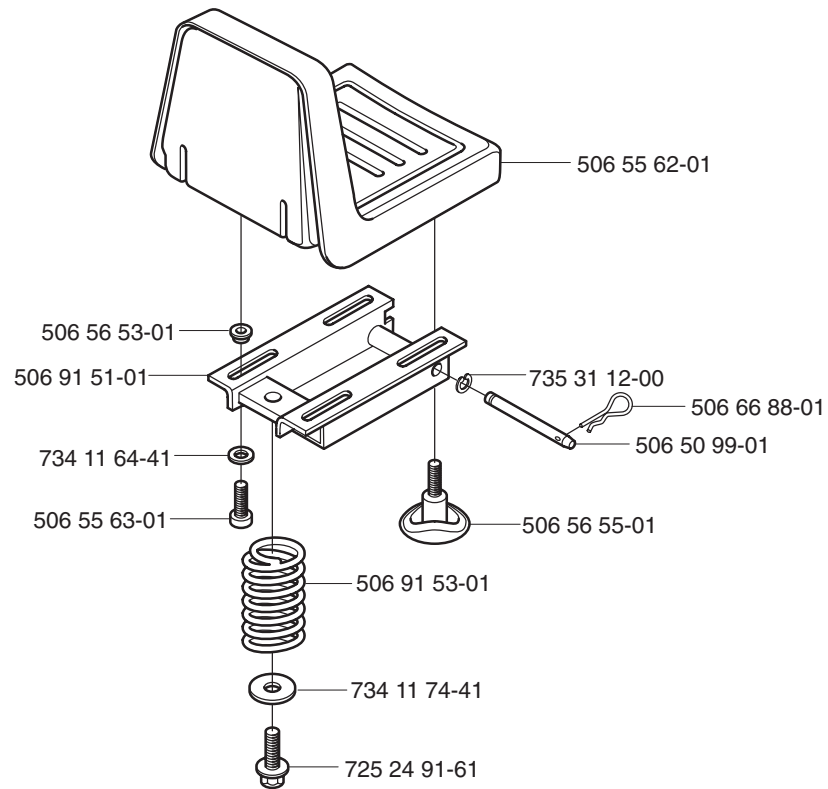
Pièces détachées

Reserve onderdelen

Repuestos

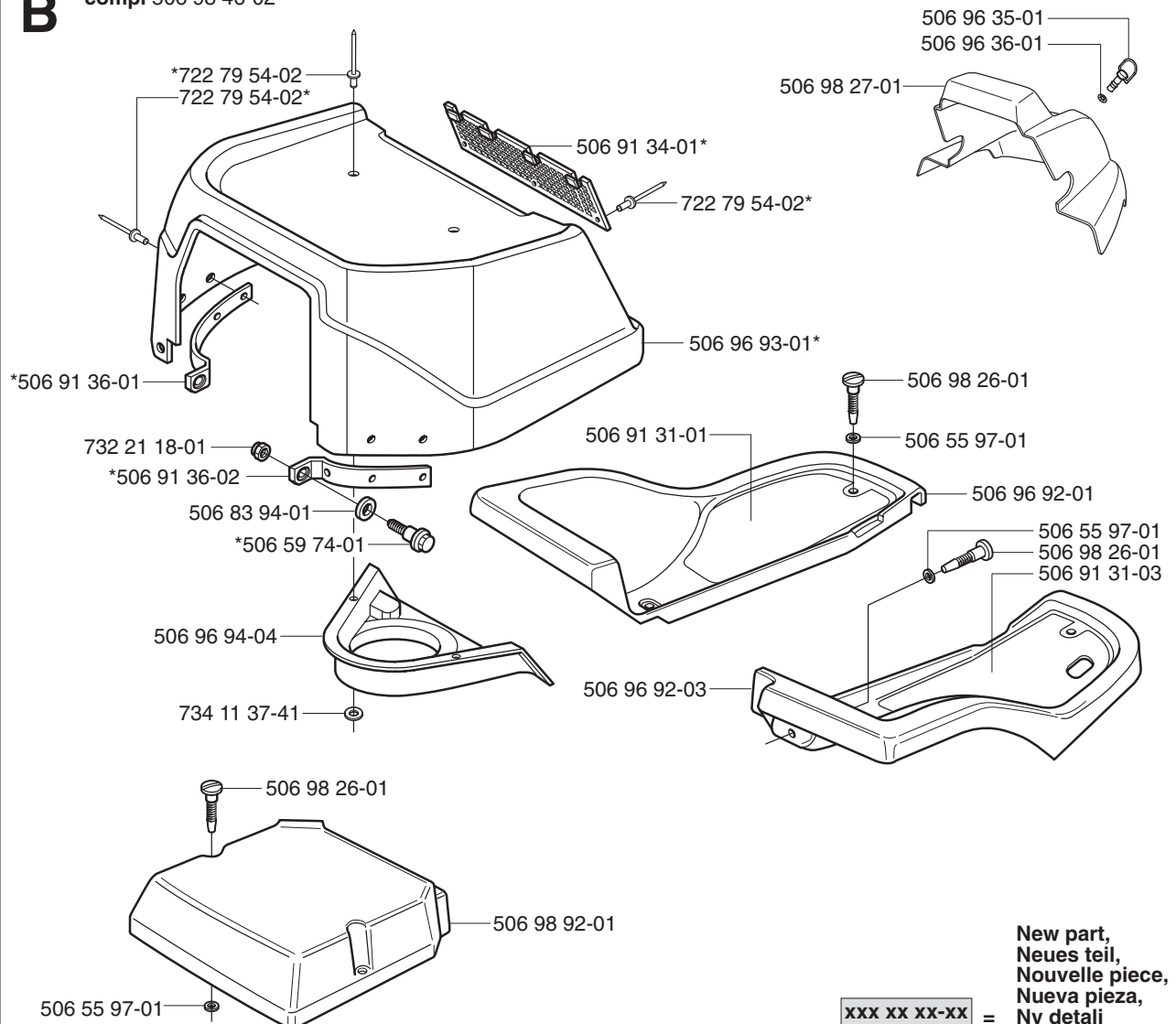
Reservdelar

A



B

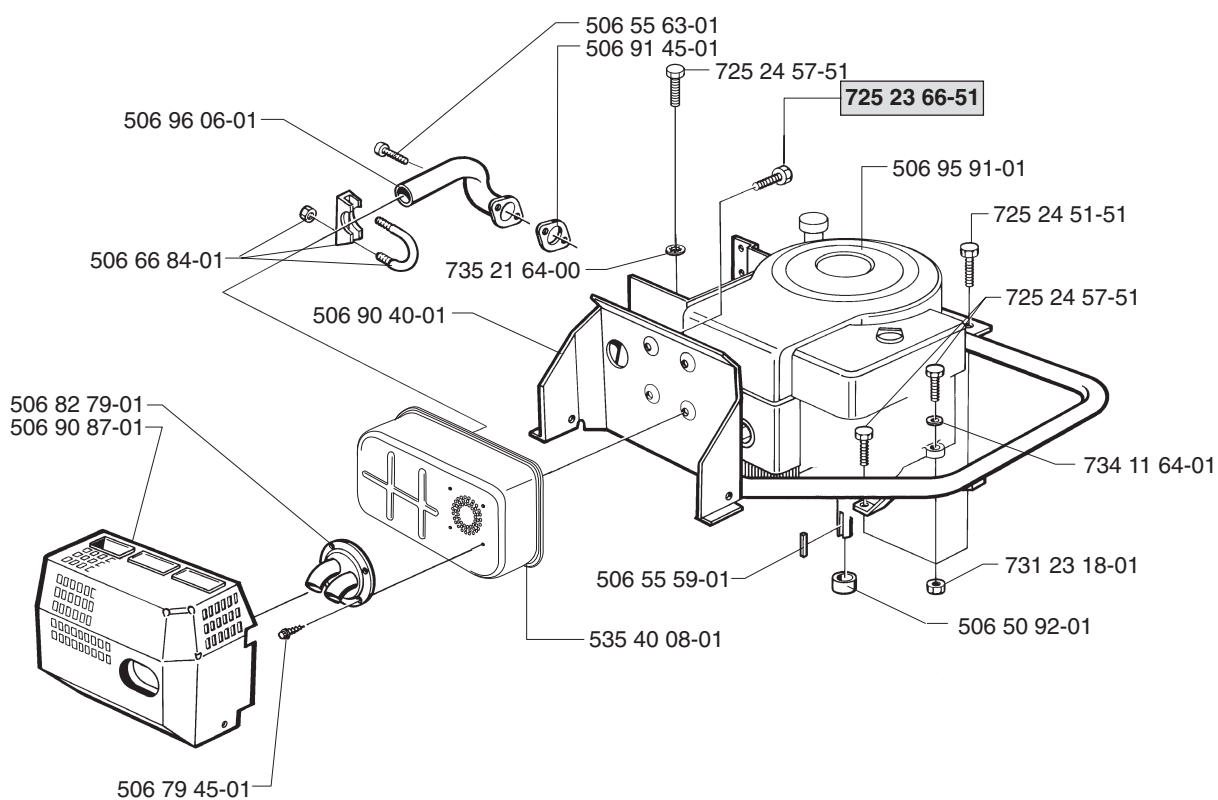
*compl 506 98 46-02



New part,
Neues teil,
Nouvelle piece,
Nueva pieza,
Ny detalj

xxx xx xx-xx =

C 15,5 hp B & S Diamond plus



New part,
Neues teil,
Nouvelle piece,
Nueva pieza,
Ny detalj

xxx xx xx-xx =

This diagram illustrates the exploded view of a mechanical assembly, likely a vehicle's rear suspension or steering component. The parts are labeled with numbers, and the assembly is shown in a disassembled state to show the relationship between components.

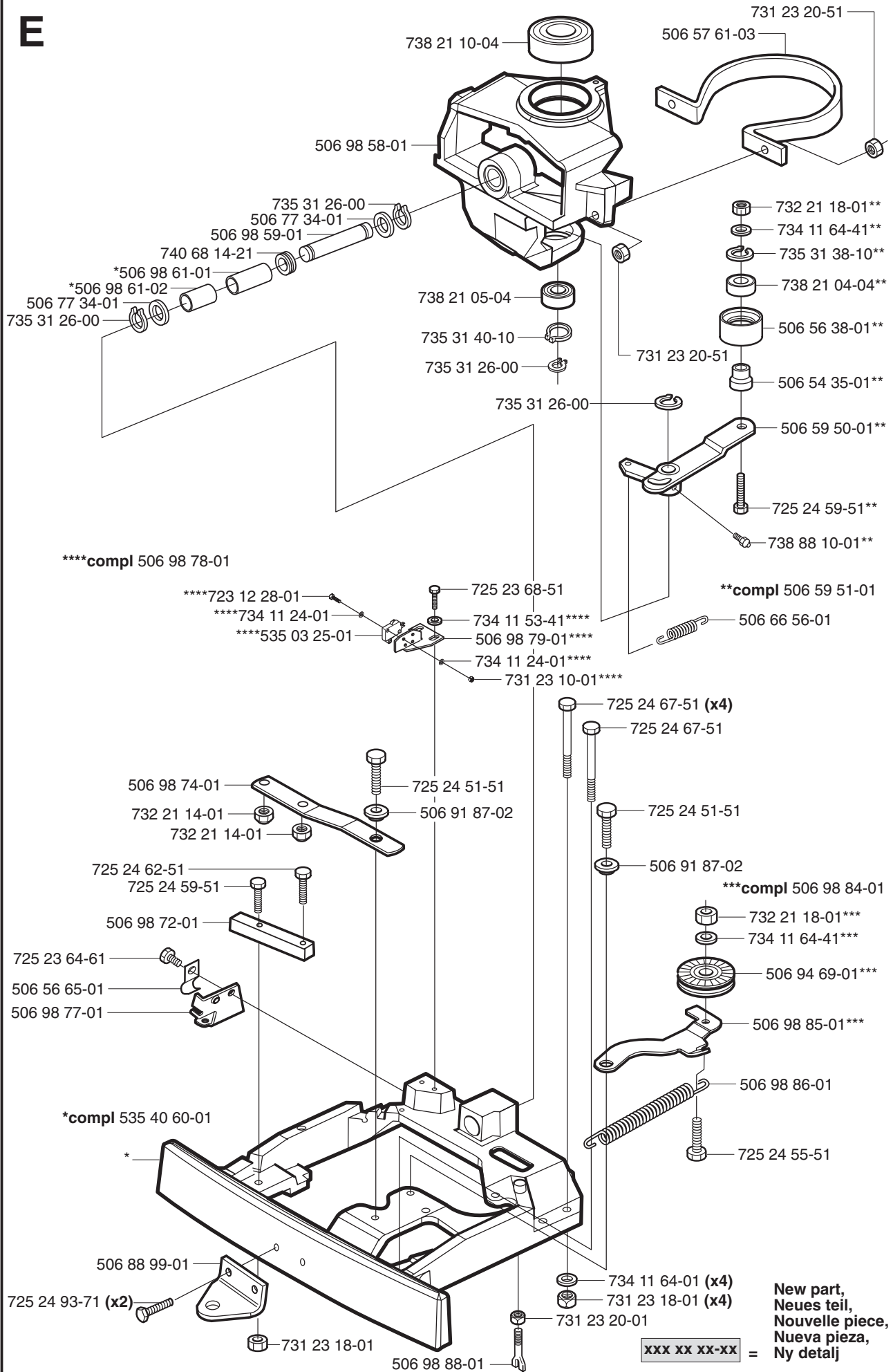
Key Components and Part Numbers:

- Top Section:** 725 24 49-51, 734 11 64-01, 506 76 98-03, 506 67 33-01, 506 57 01-03, 506 76 96-01, 506 76 97-03, 732 21 16-01, 734 11 56-01, 506 91 76-05, 506 96 57-01, 725 23 29-51, 506 80 00-01, 732 21 14-01, 506 56 65-01, 732 21 14-01, 725 23 64-61, 735 58 35-01, 506 53 86-01.
- Central Section:** 734 11 56-01, 725 23 70-51, 732 21 18-01, 506 94 68-01, 506 57 59-01, 721 61 83-01, 506 94 68-01, 506 94 67-02, 732 21 16-01, 506 96 56-01, 725 23 68-51, 506 66 45-01, 731 23 20-51, 506 57 64-01, 731 23 20-51, 506 75 38-01, 721 43 49-01, 506 91 44-01, 729 54 14-01, 506 91 37-01, 506 89 20-01, 506 96 95-01.
- Bottom Section:** 531 00 75-72, 506 93 90-01, 506 59 75-01, 531 00 50-14, 734 11 64-41, 531 00 50-14, 506 77 56-01, 506 77 57-01, 506 99 81-01, 725 24 49-51, 506 55 60-02, 735 31 38-10 (x2), 738 21 04-04 (x2), 531 00 50-17.

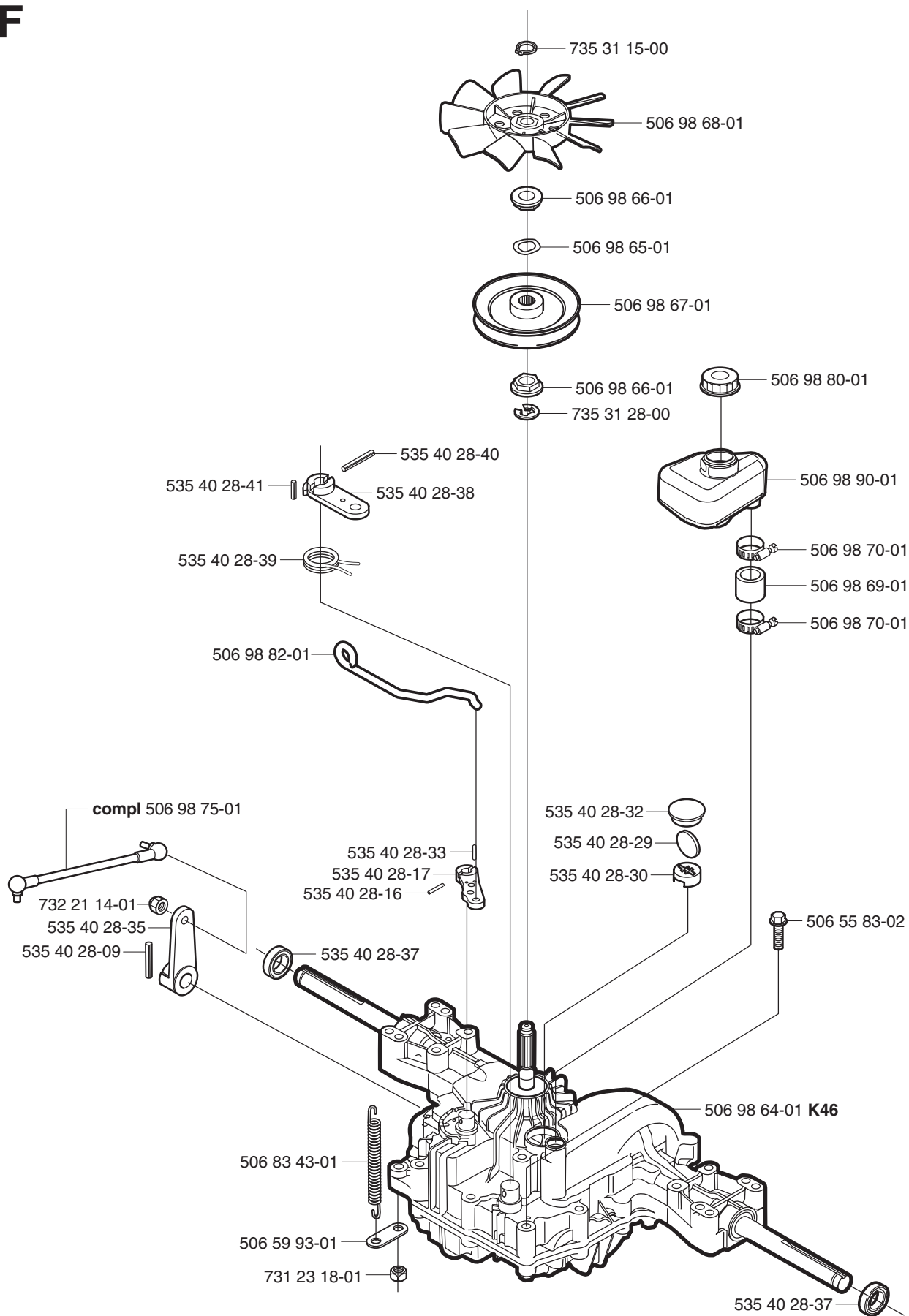
The diagram shows the assembly of various components, including a main housing, a central bracket, a lower bracket, and a rear panel. The parts are shown in their relative positions, with lines indicating the assembly sequence and fit.

XXX XX XX-XX

E



F

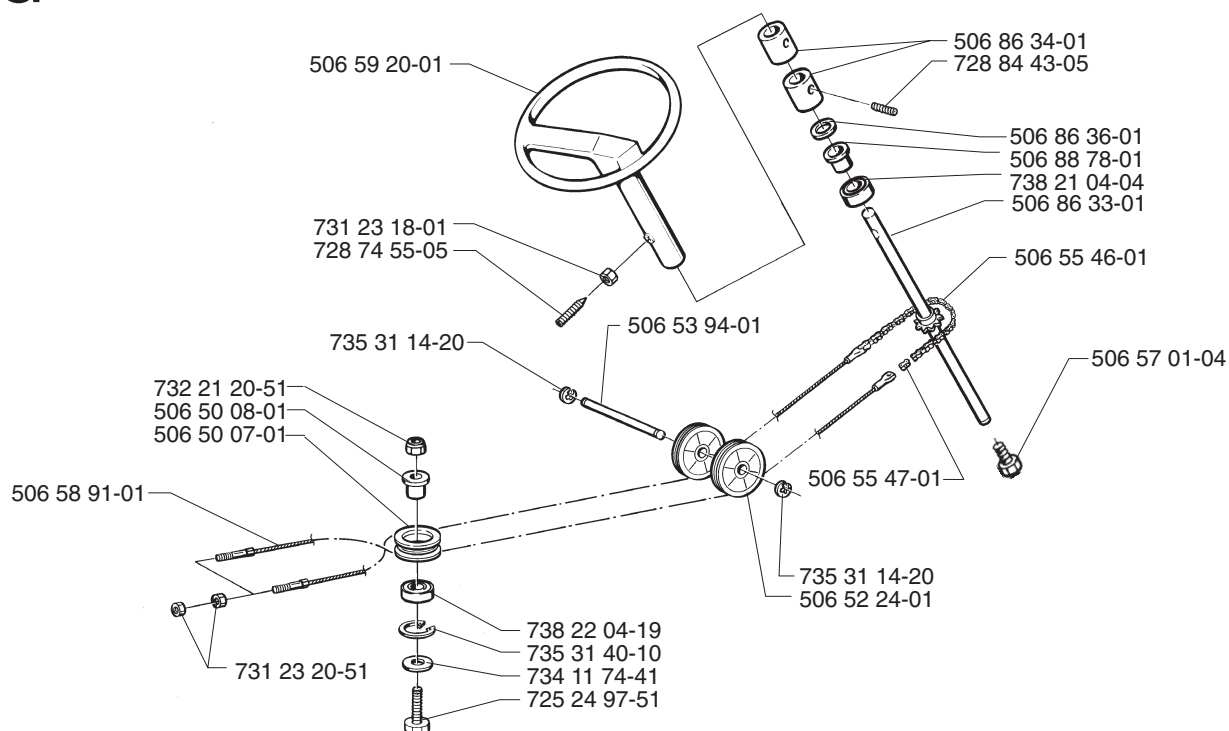


New part,
Neues teil,
Nouvelle piece,
Nueva pieza,
Ny detalj

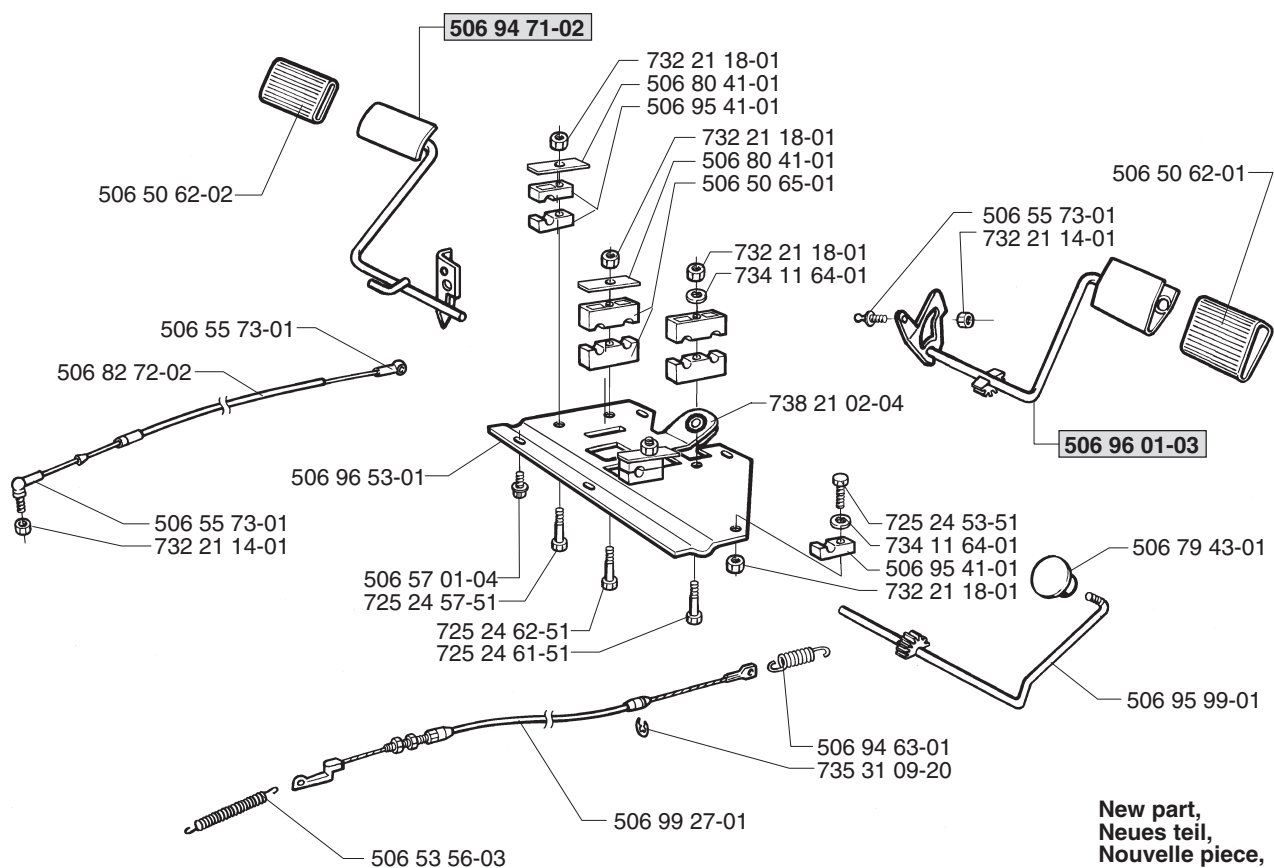
xxx xx xx-xx

=

G



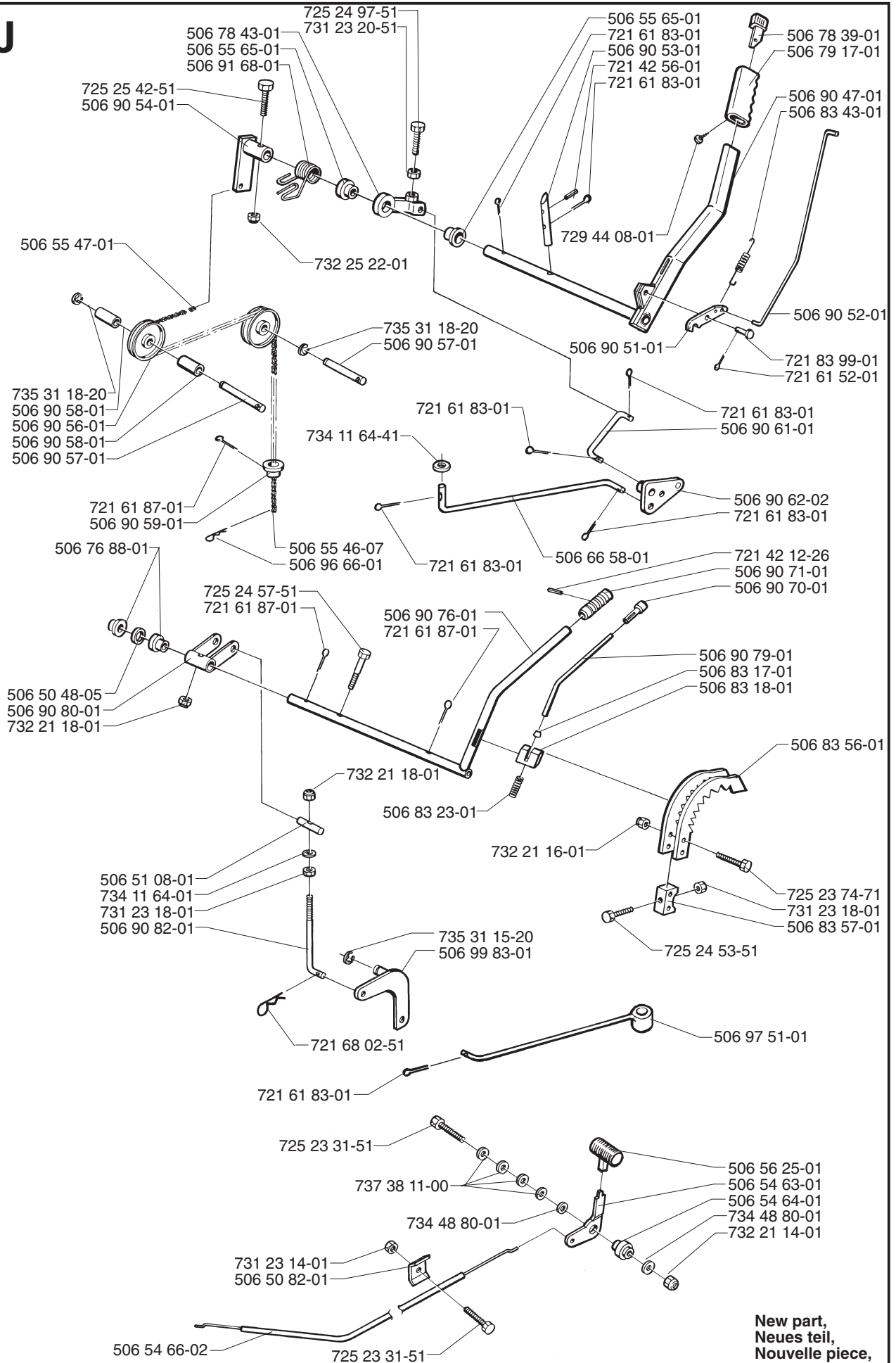
H



New part,
Neues teil,
Nouvelle piece,
Nueva pieza,
Ny detalj

xxx xx xx-xx =

J

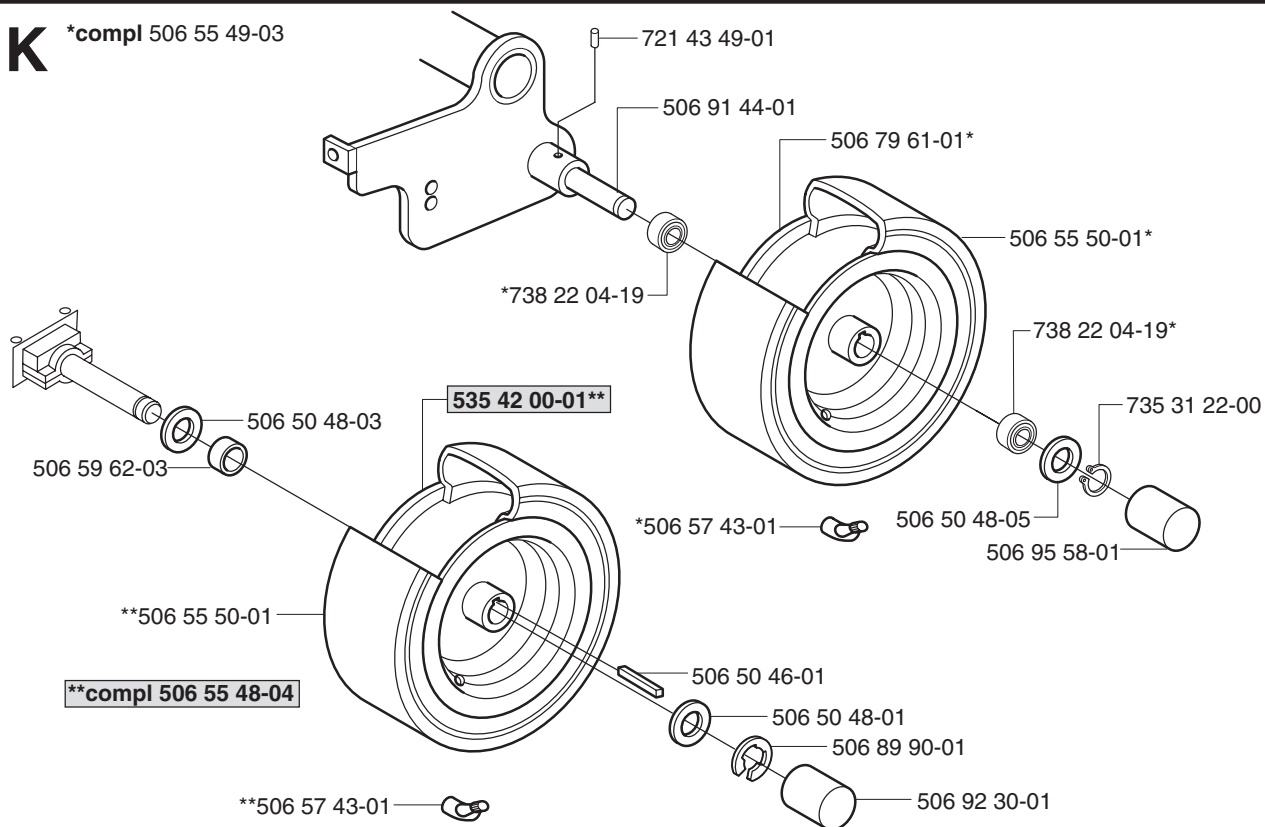


New part,
Neues teil,
Nouvelle piece,
Nueva pieza,
Ny detalj

xxx xx xx-xx =

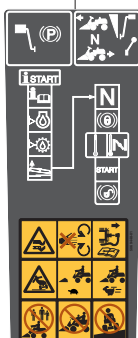
K

*compl 506 55 49-03



L

Warning
506 94 48-01



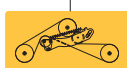
506 99 96-01



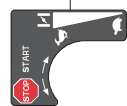
535 43 20-01



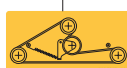
535 41 52-01



506 84 28-01



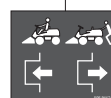
506 78 97-01



506 84 28-03



506 94 47-01



506 58 45-01



506 91 57-01



506 94 29-02



506 94 30-01 — **Husqvarna**

506 94 27-01 — **H**



506 94 29-01

506 94 34-06

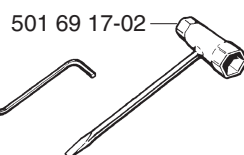


506 94 34-05

M

Leverans endast som reservdel
Delivery as spare part only
Nur als Ersatzteil lieferbar
Livrable seulement comme pièce de rechange
Solo como repuesto
Zasilá se jenom jako náhradní díl

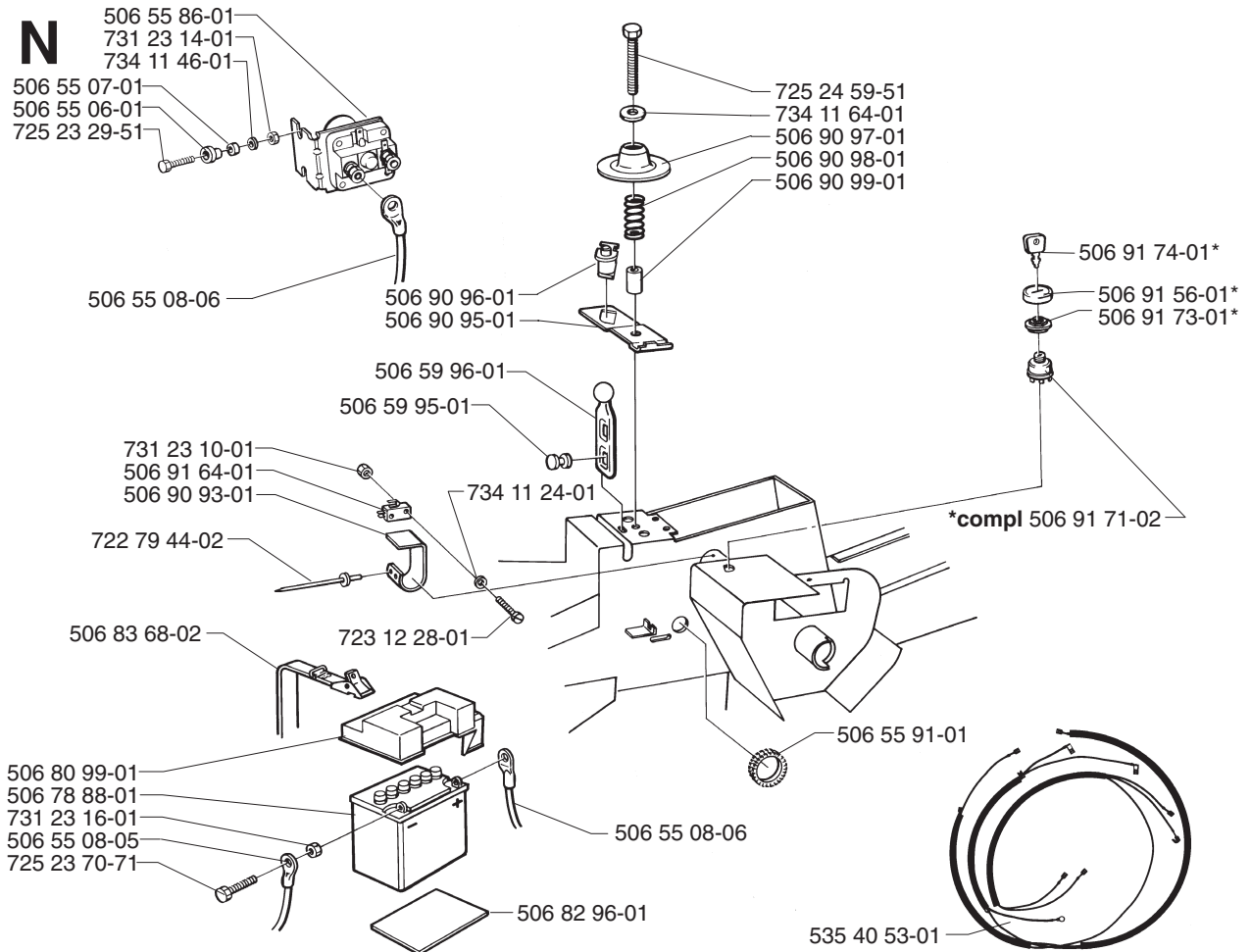
502 71 36-01



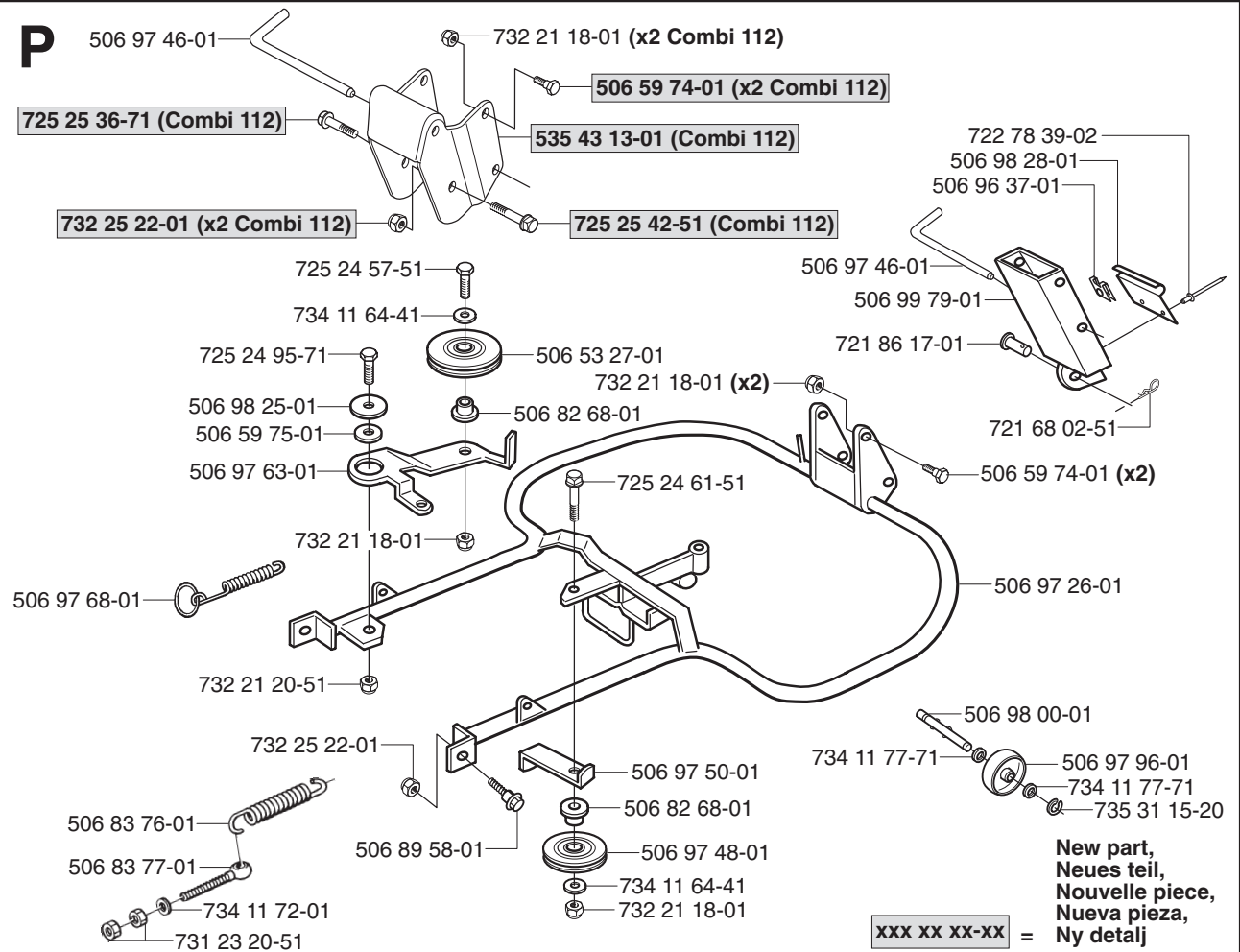
xxx xx xx-xx

New part,
Neues teil,
Nouvelle piece,
Nueva pieza,
Ny detalj

N



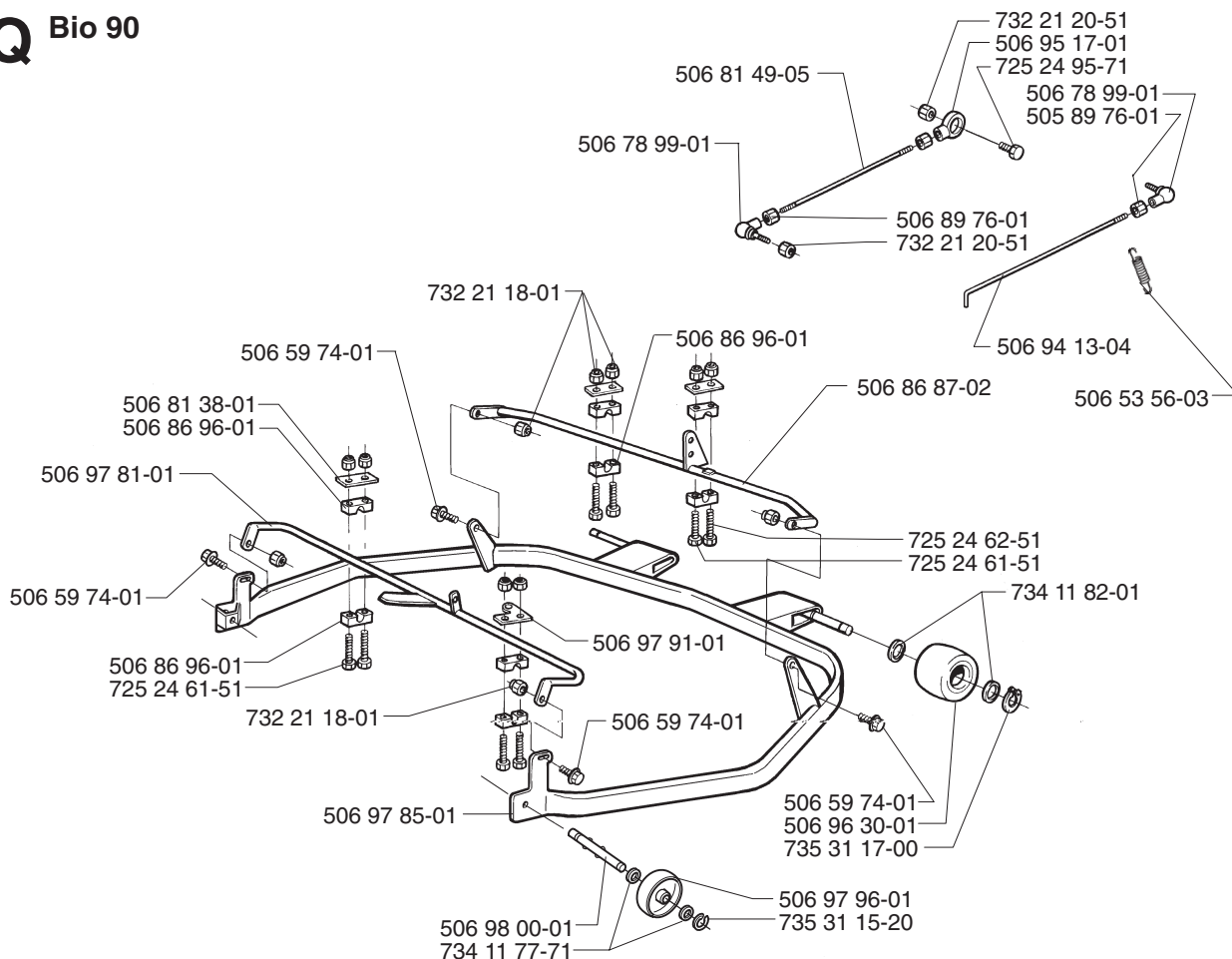
P



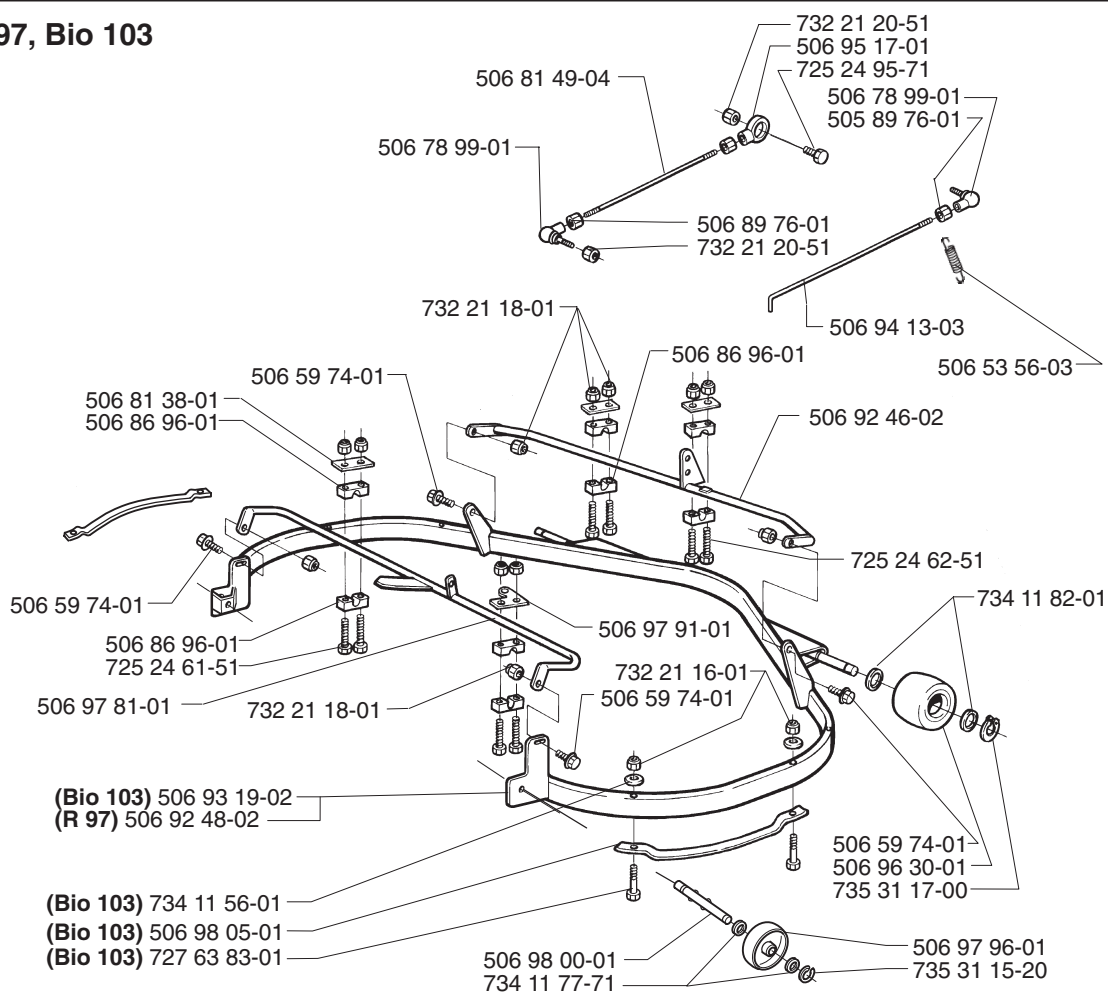
New part,
Neues teil,
Nouvelle piece,
Nueva pieza,
Ny detalj

xxx xx xx-xx =

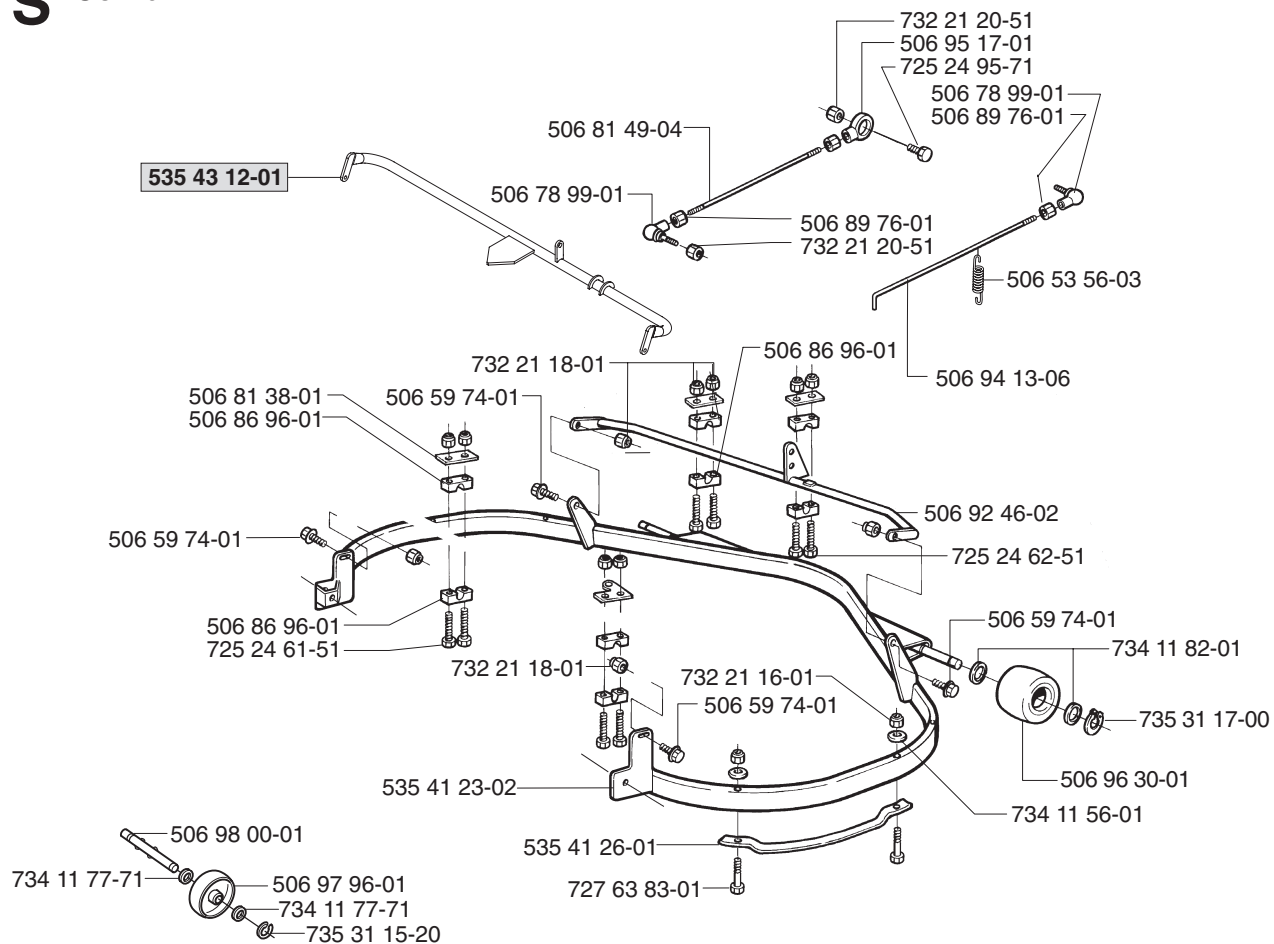
Q Bio 90



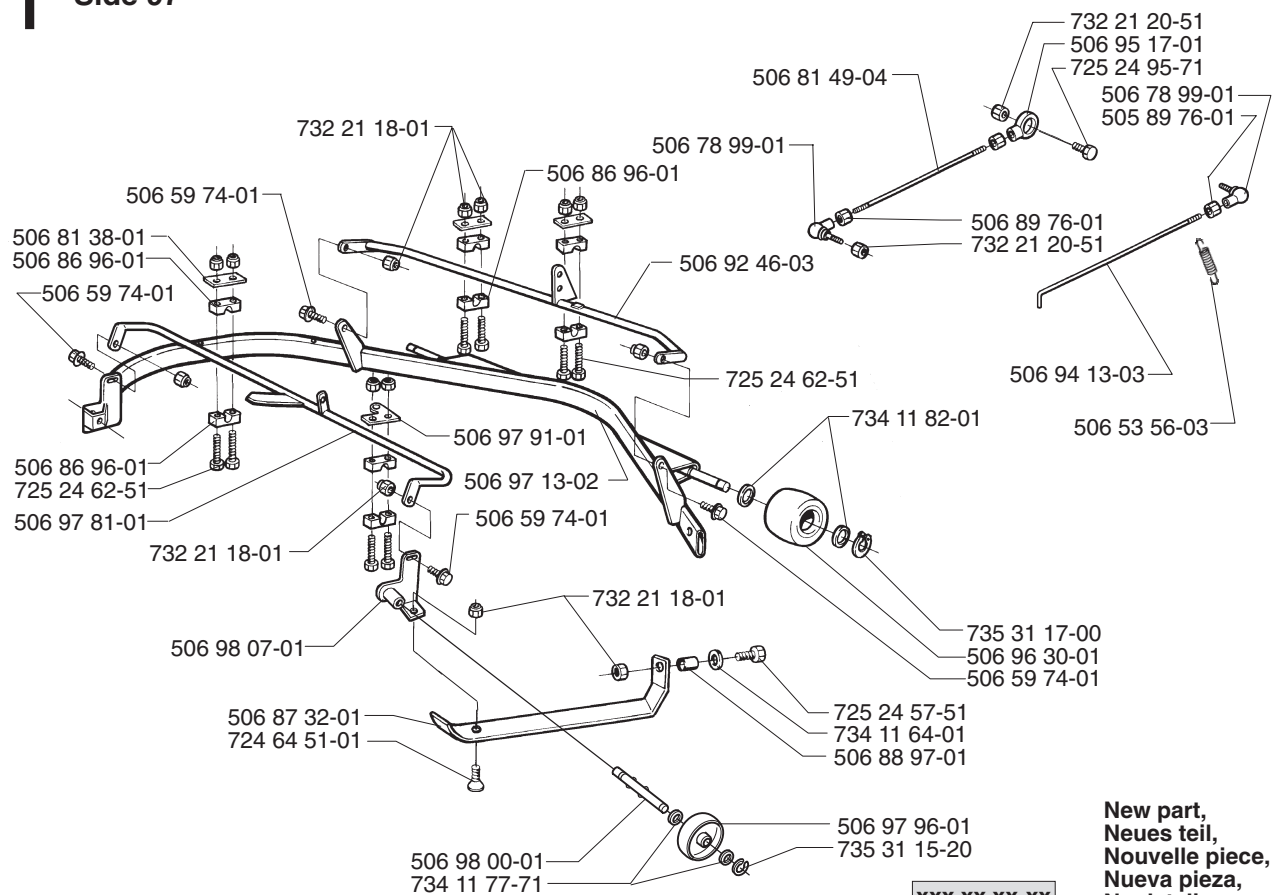
R Rear 97, Bio 103



S Combi 112



T Side 97

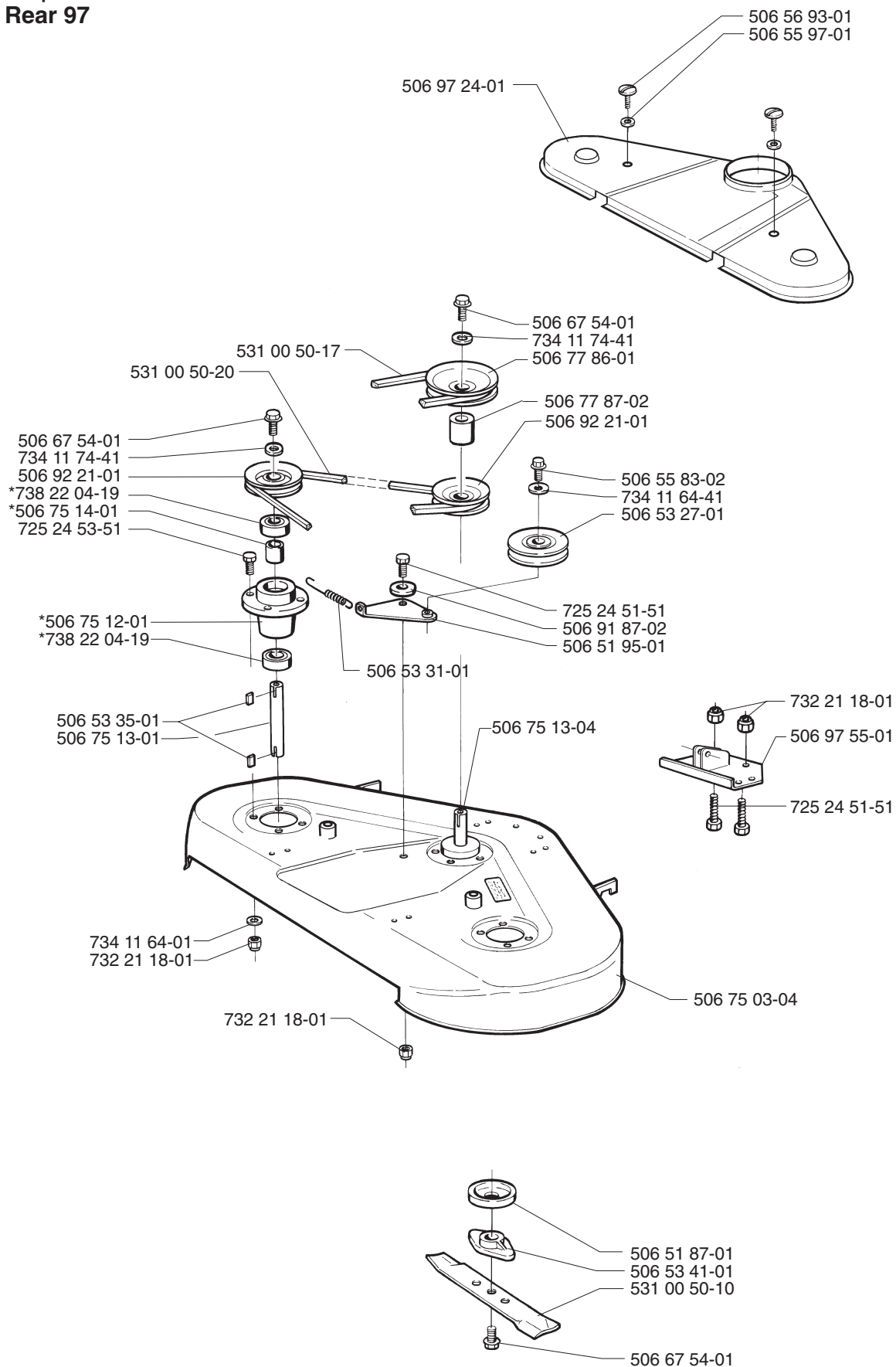


New part,
Neues teil,
Nouvelle piece,
Nueva pieza,
Ny detalj

xxx xx xx-xx =

U

*compl 506 75 11-01 Yttre. Outer. Extérieur. Äusser. Ulko.
 *compl 506 75 11-04 Mitten. Centre. Centre. Zentrum. Keski.
Rear 97

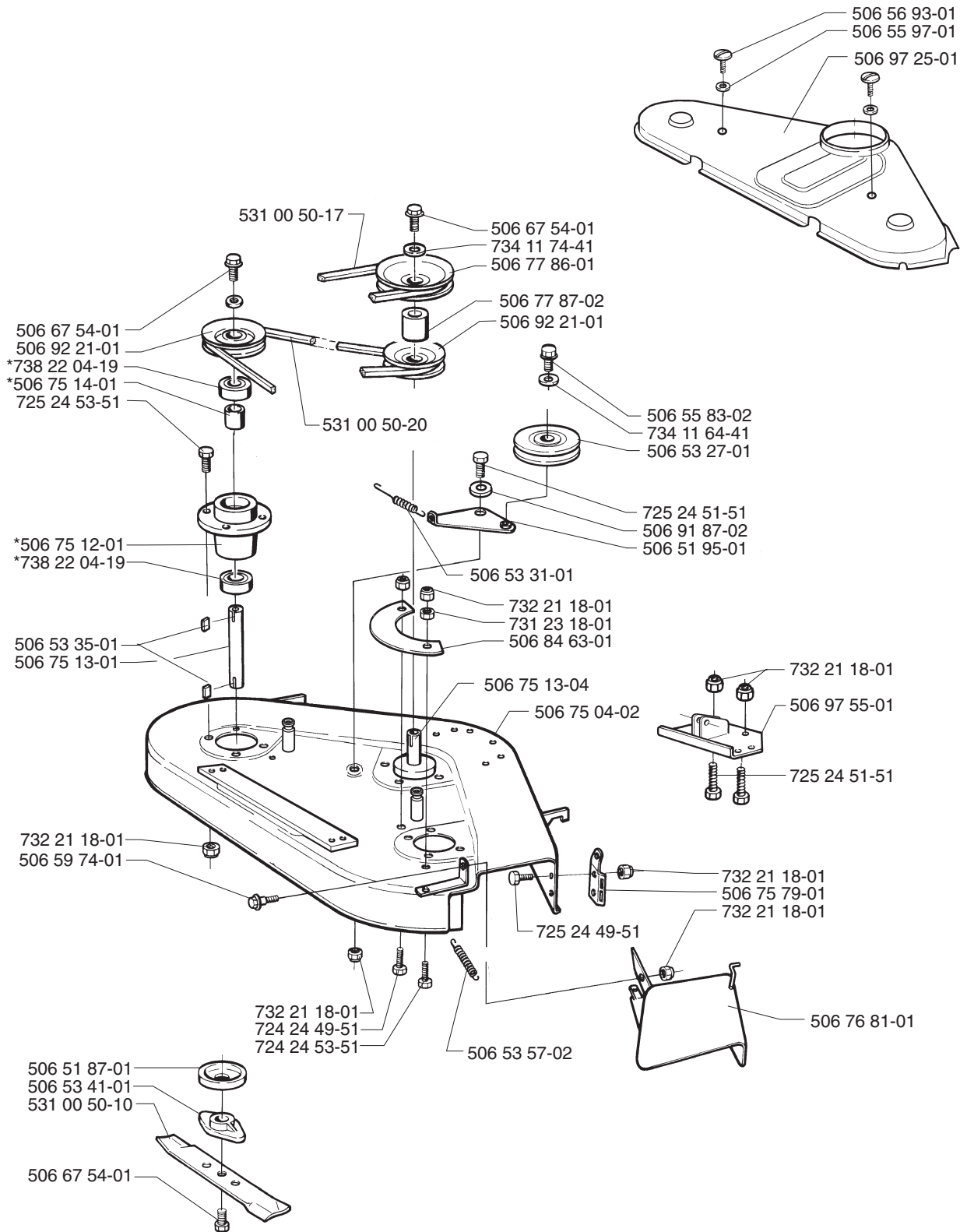


New part,
 Neues teil,
 Nouvelle piece,
 Nueva pieza,
 Ny detalj

xxx xx xx-xx =

V

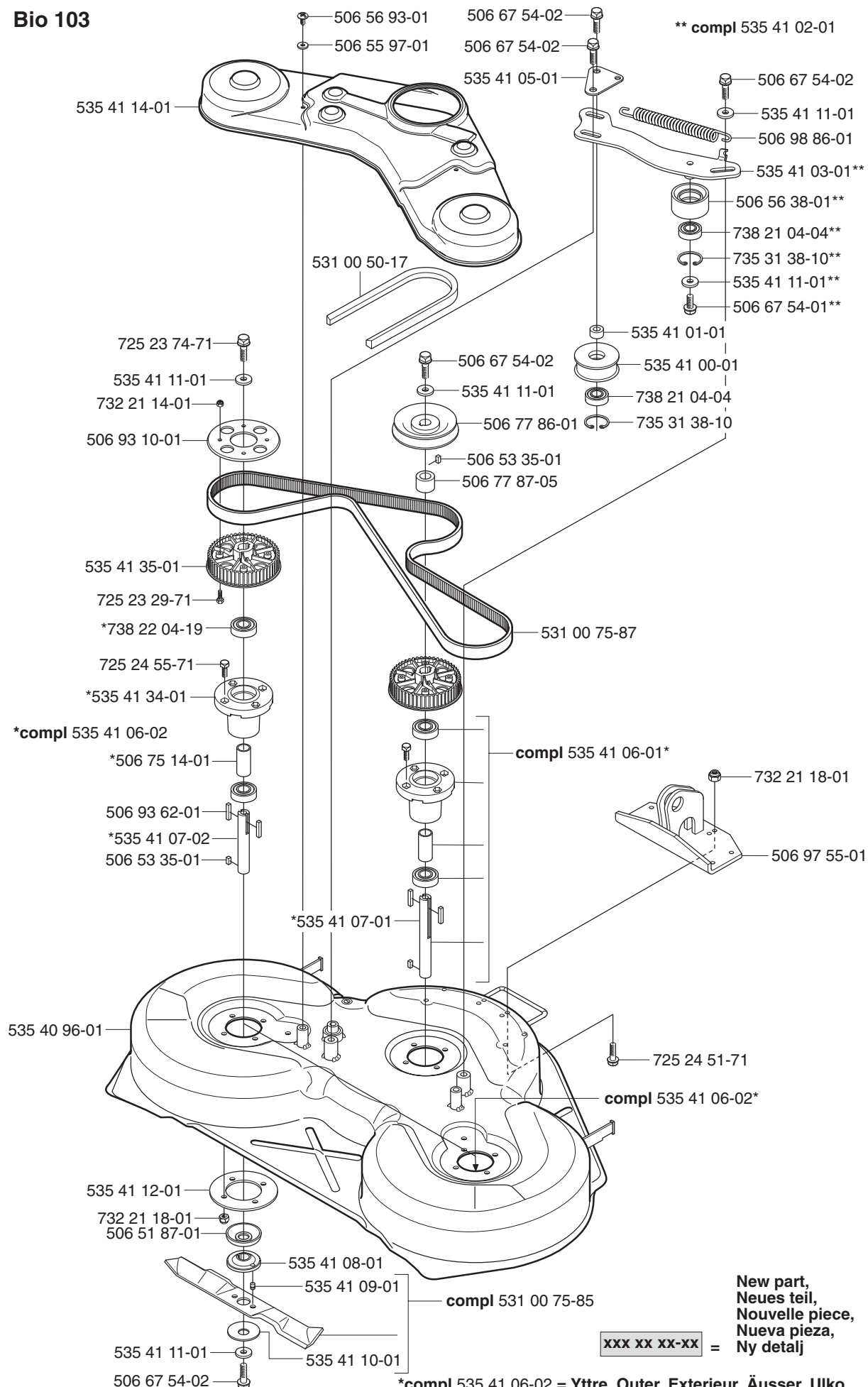
*compl 506 75 11-01 Yttre. Outer. Exterior. Äusser. Ulko.
 *compl 506 75 11-04 Mitten. Centre. Centre. Zentrum. Keski.
 Side 97



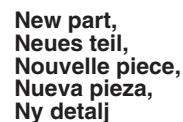
New part,
 Neues teil,
 Nouvelle piece,
 Nueva pieza,
 Ny detalj

xxx xx xx-xx =

X Bio 103



*compl 535 41 06-02 = Yttre. Outer. Exterior. Äusser. Ulko.
*compl 535 41 06-01 = Mitten. Center. Centre. Zentrum. Keski.



Z***compl 506 75 11-01 Yttre. Outer. Exterieur. Äusser. Ulko.*****compl 506 75 11-04 Mitten. Centre. Centre. Zentrum. Keski.****Combi 112**