

Rider 11

Spare parts

Ersatzteile

Pièces détachées

Reserve onderdelen

Repuestos

Reservdelar

Replaces

Ersetzt

Remplace

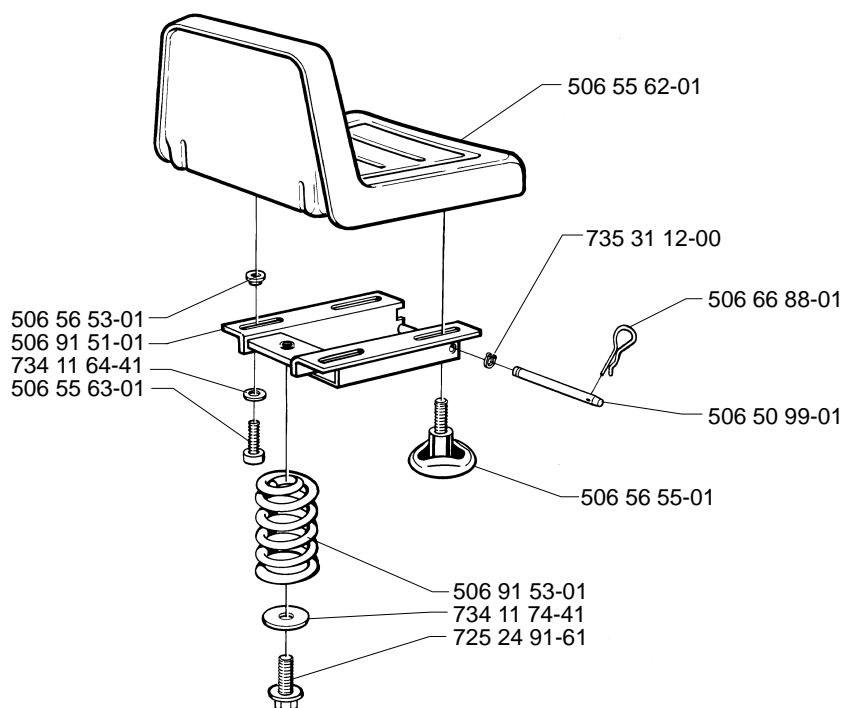
Vervangt

Reemplaza

Ersätter

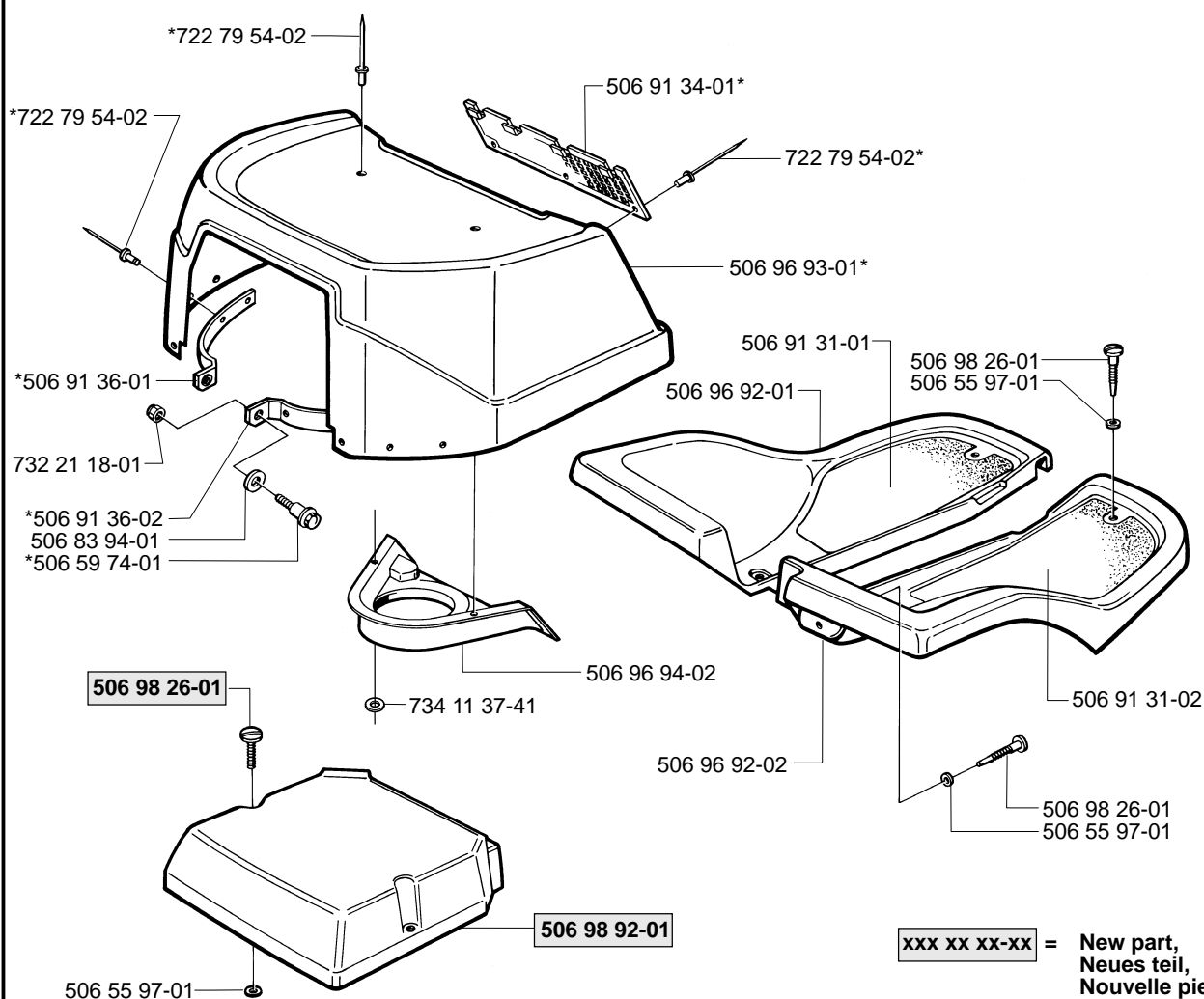
106 26 48-61

A



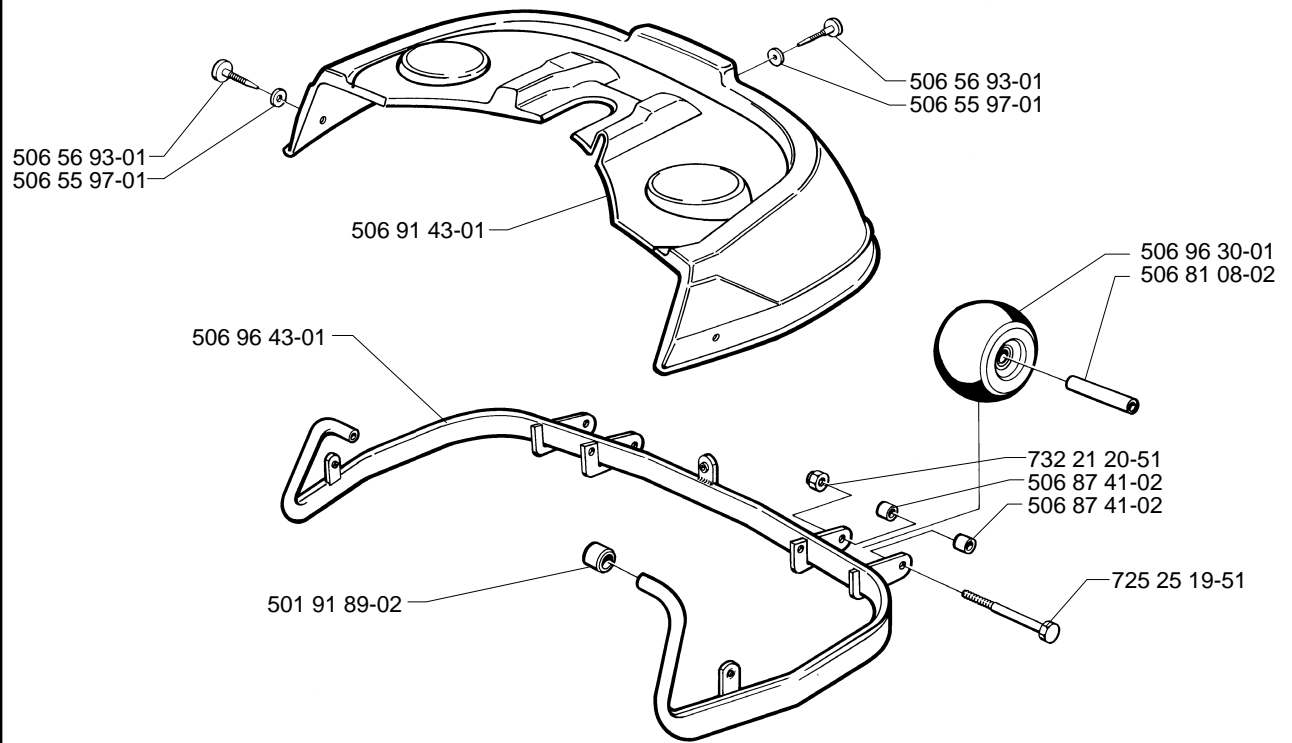
B

*compl 506 98 46-01



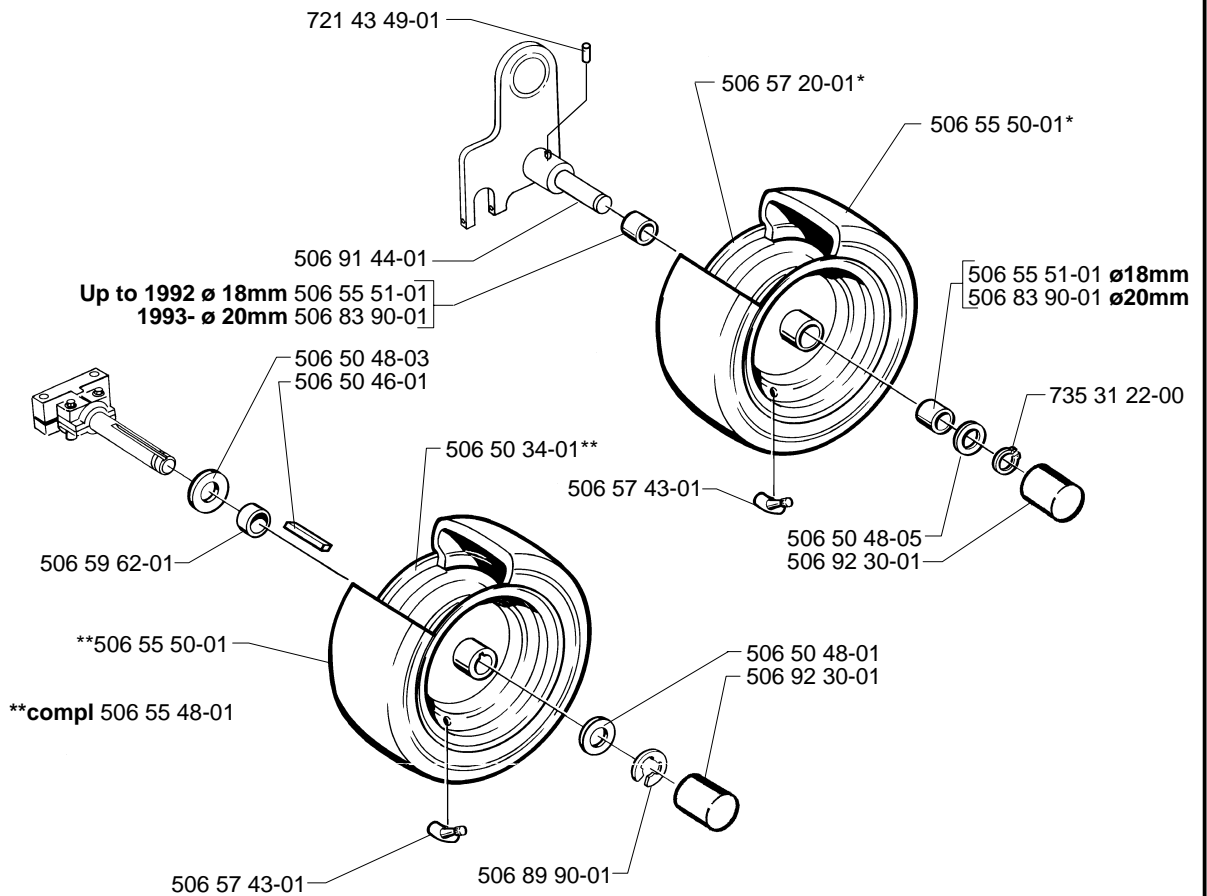
xxx xx xx-xx = New part,
Neues teil,
Nouvelle piece,
Nueva pieza,
Ny detalj

C

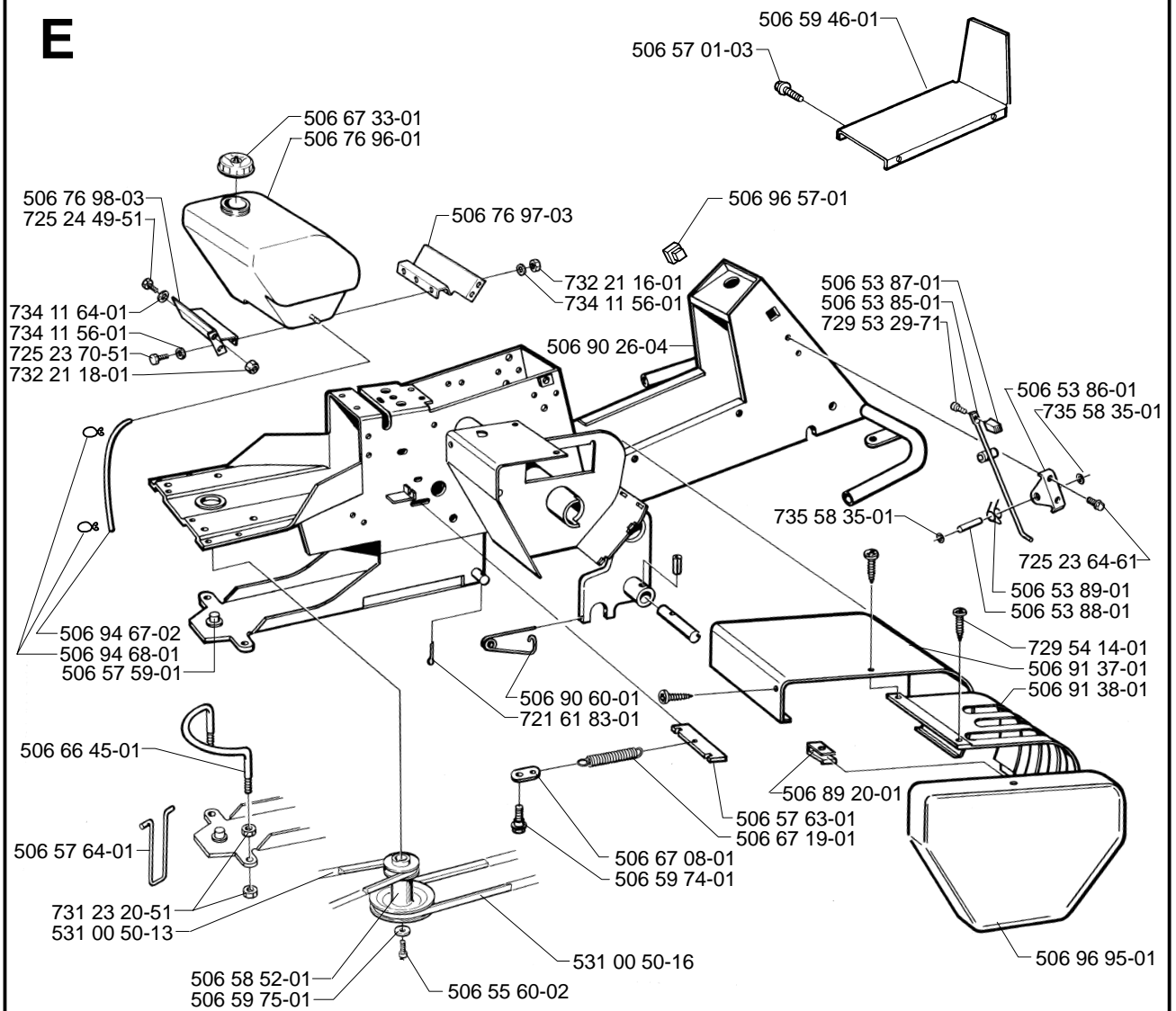


D

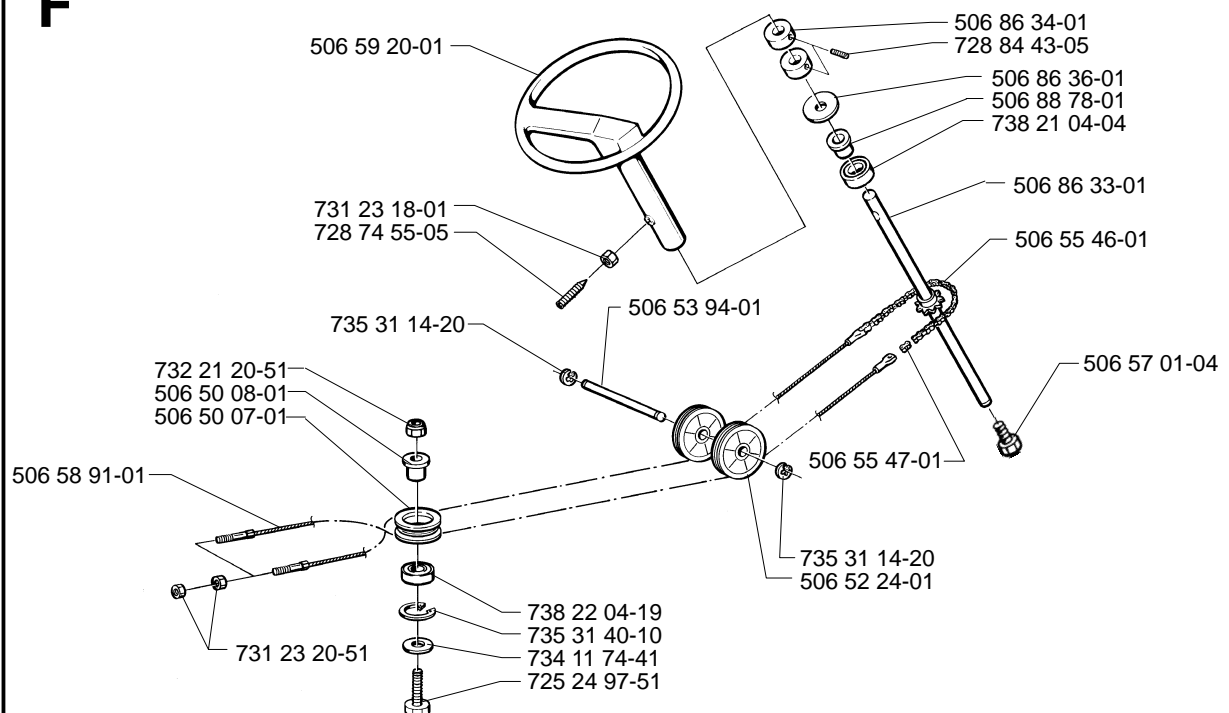
Up to 1992 *compl 506 55 49-01 (ø18mm)
1993- *compl 506 55 49-02 (ø20mm)



E

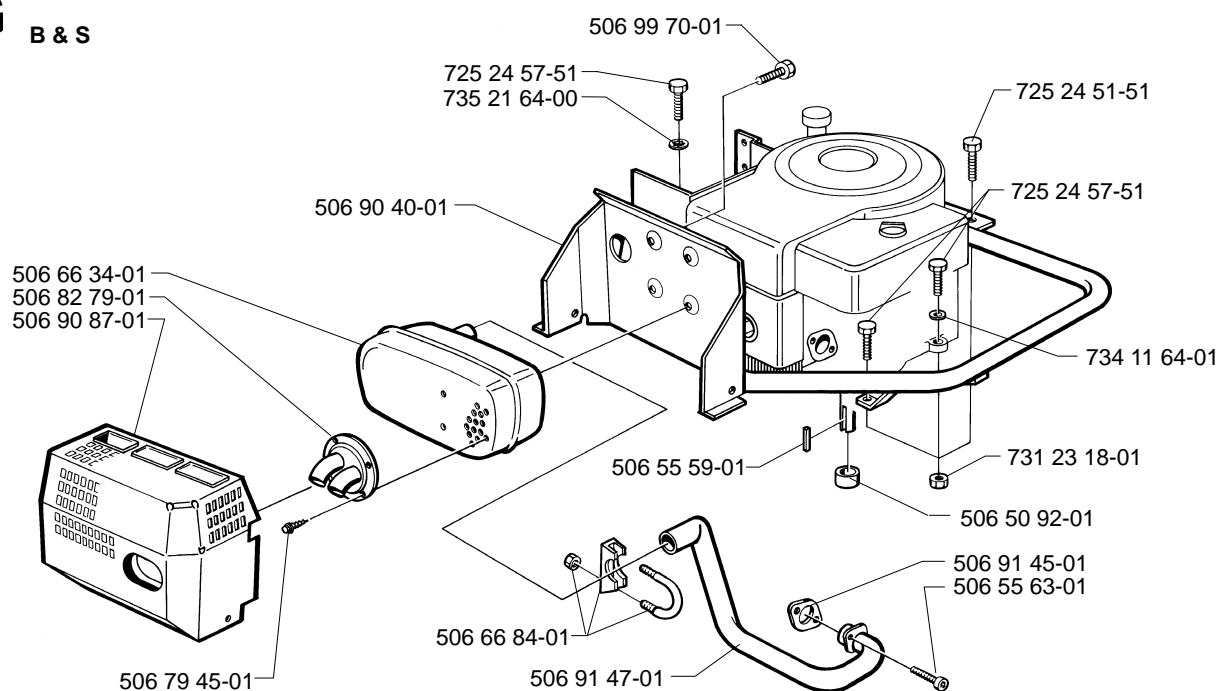


F

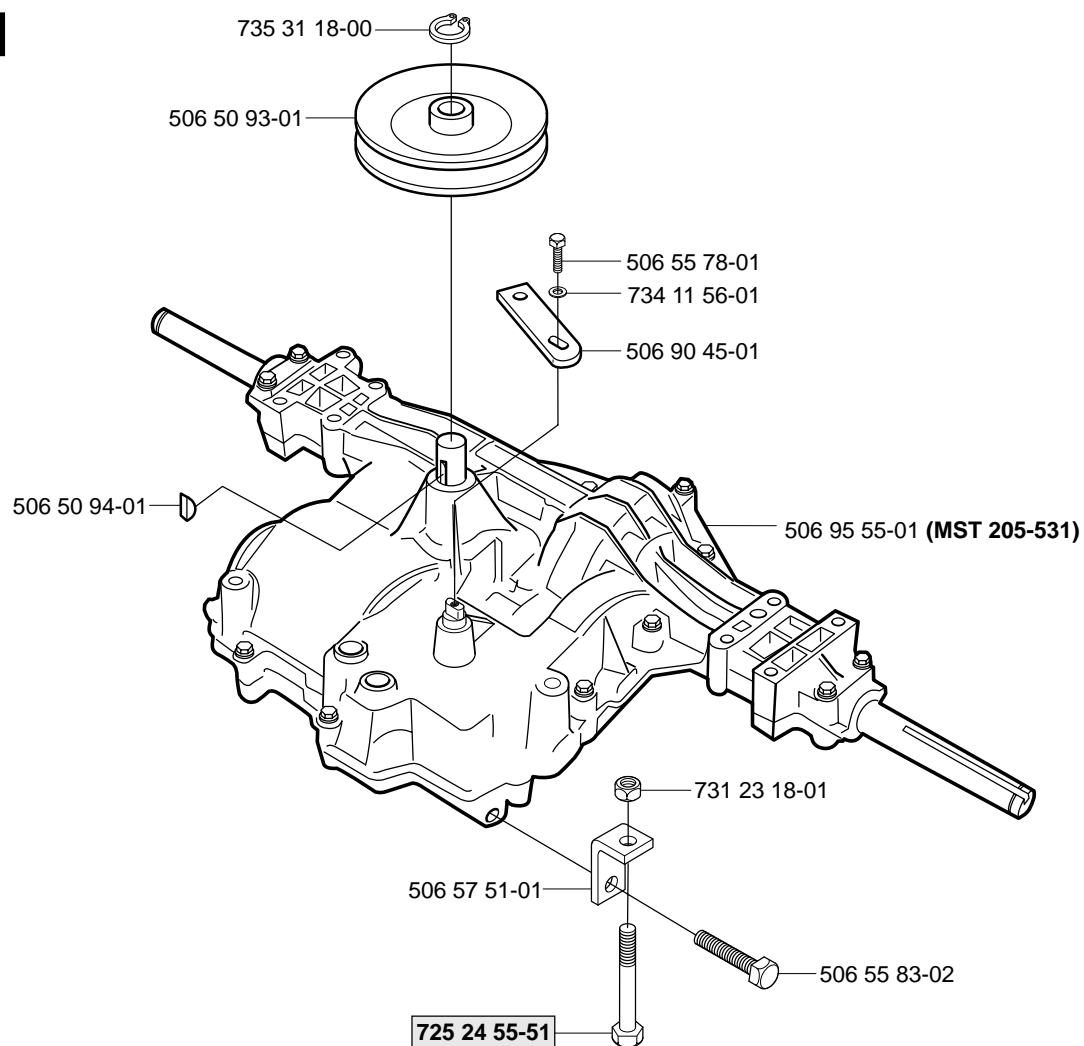


G

B & S

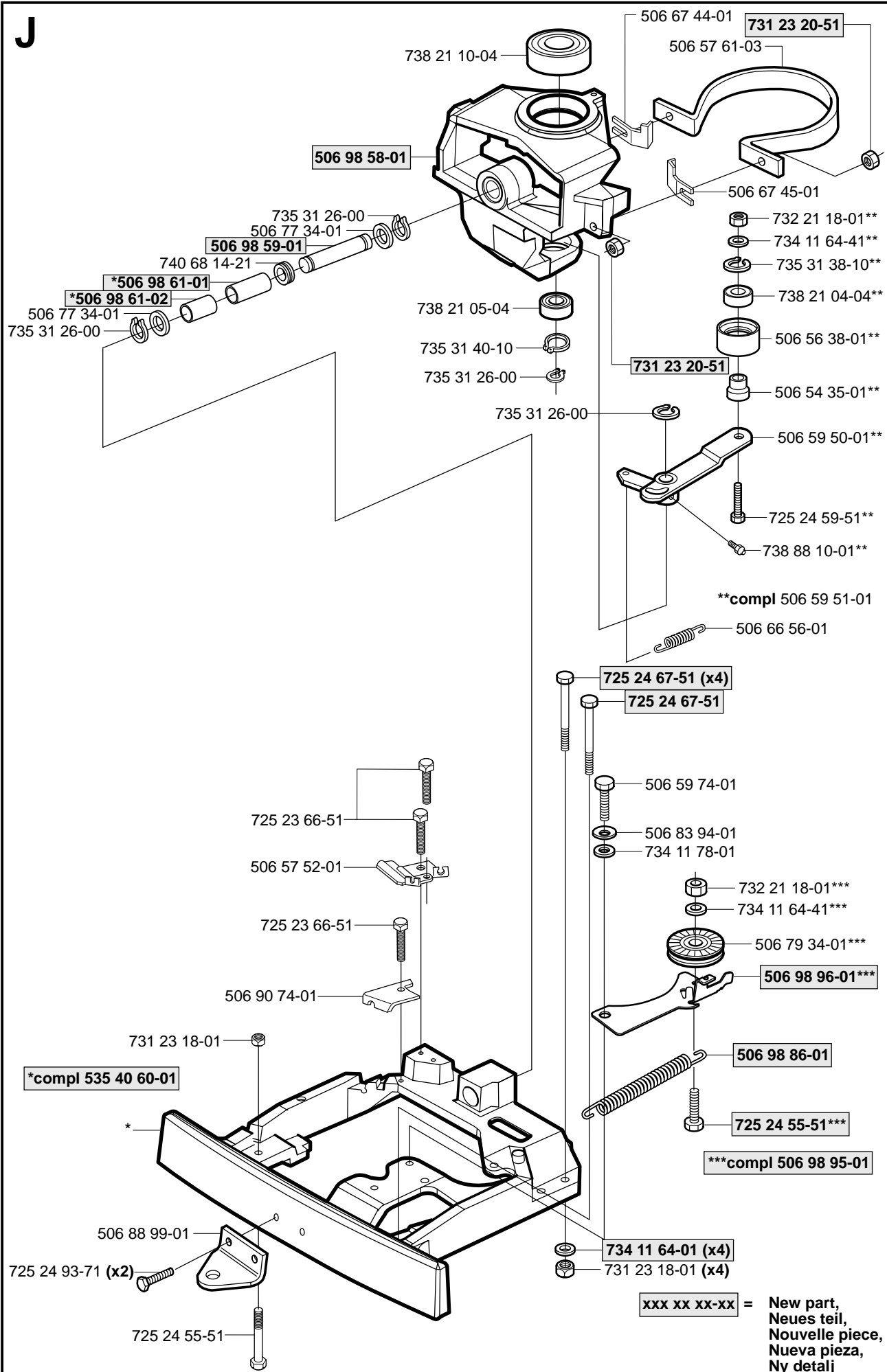


H

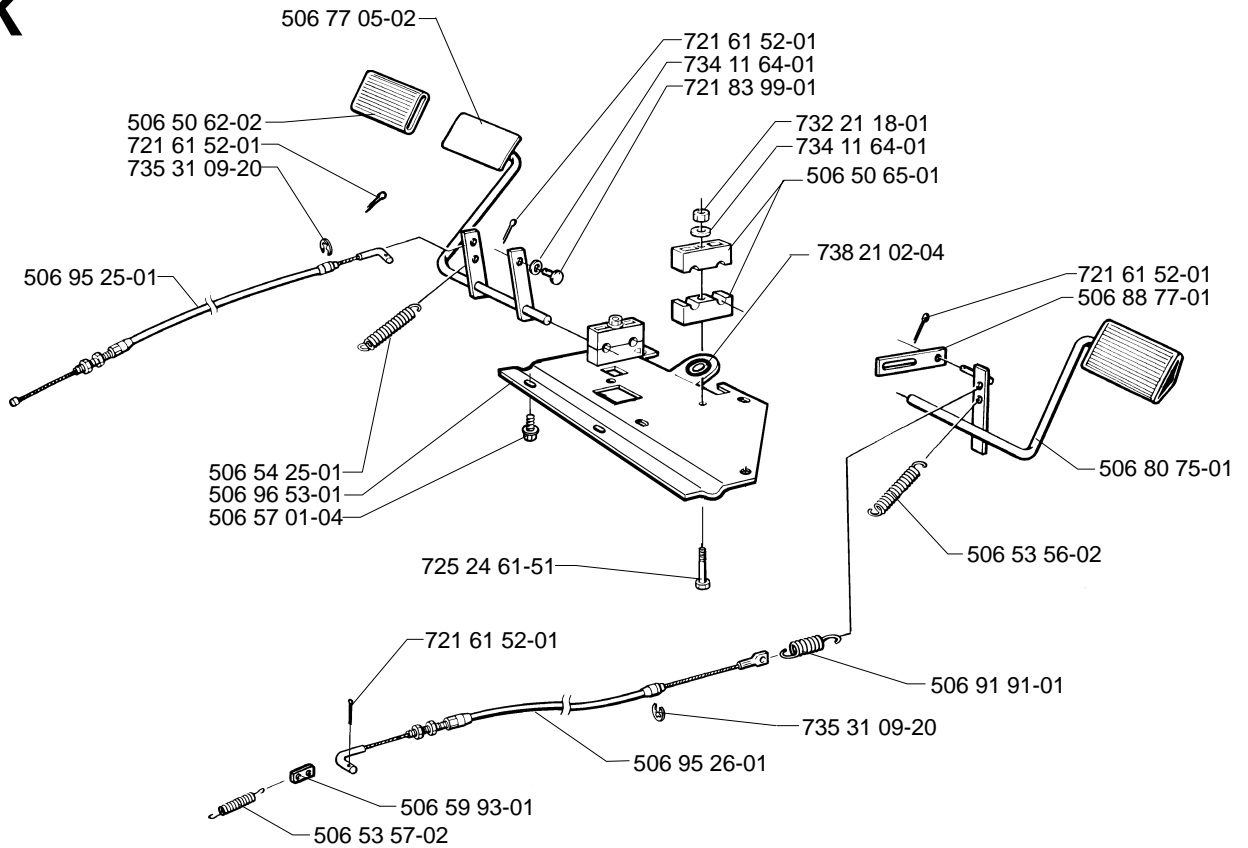


xxx xx xx-xx = New part,
Neues teil,
Nouvelle piece,
Nueva pieza,
Ny detalj

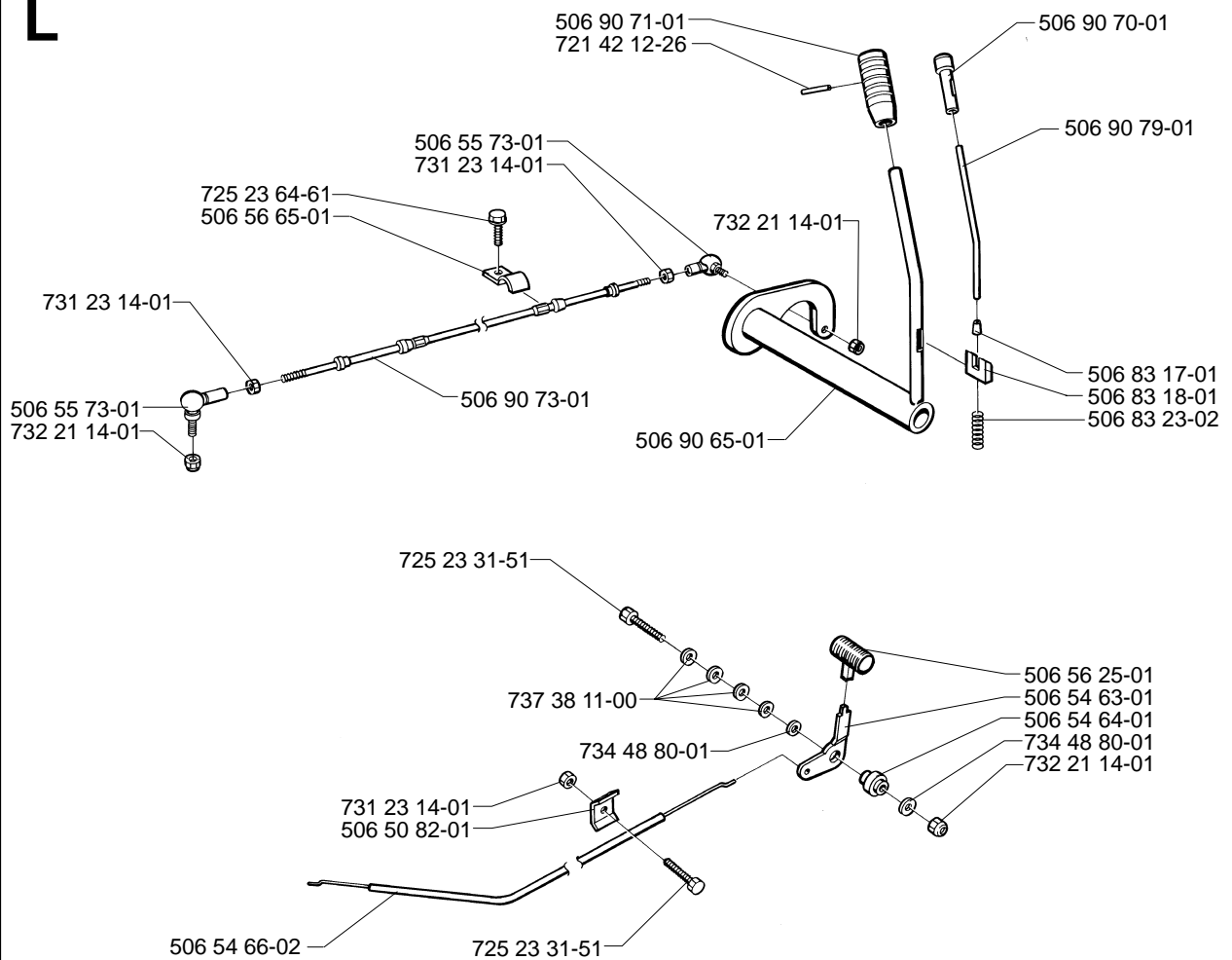
J



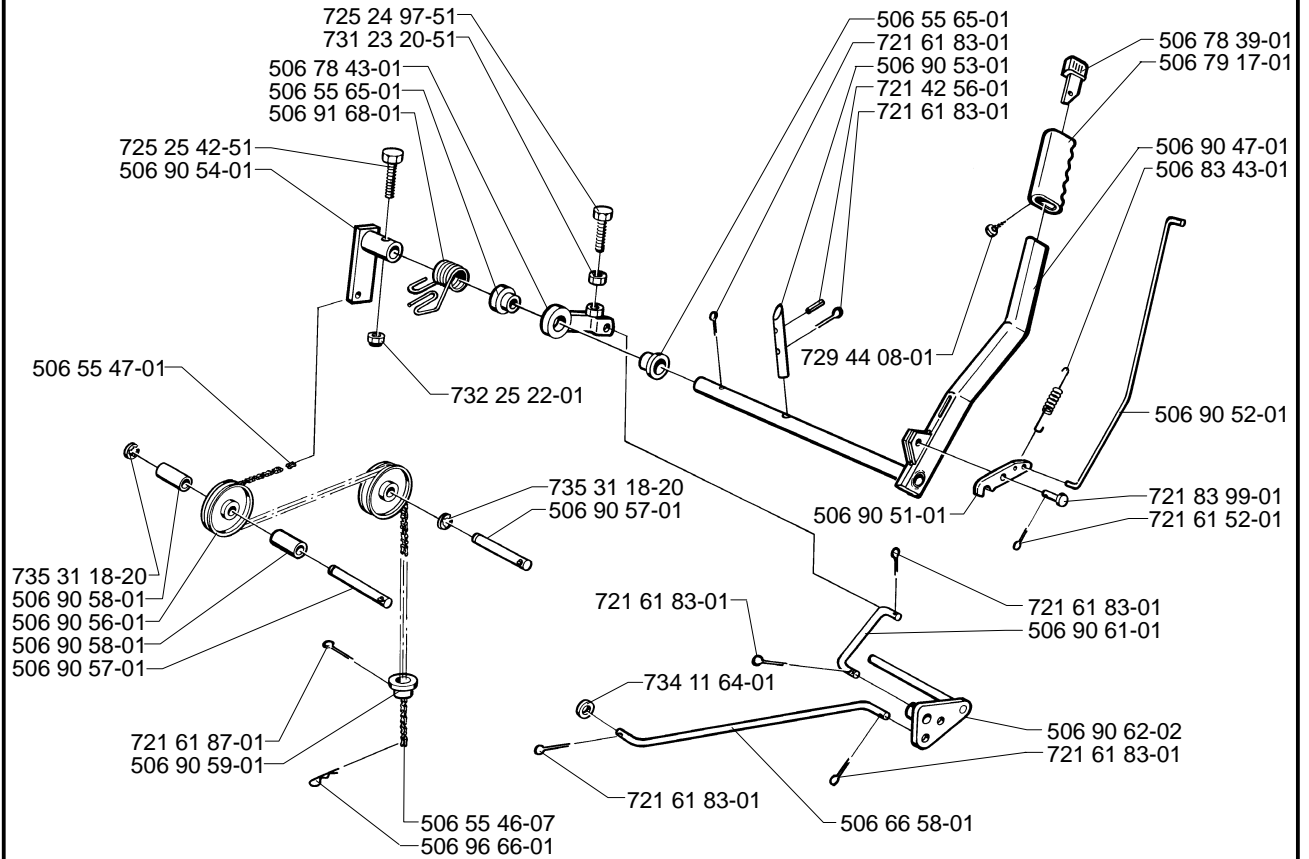
K



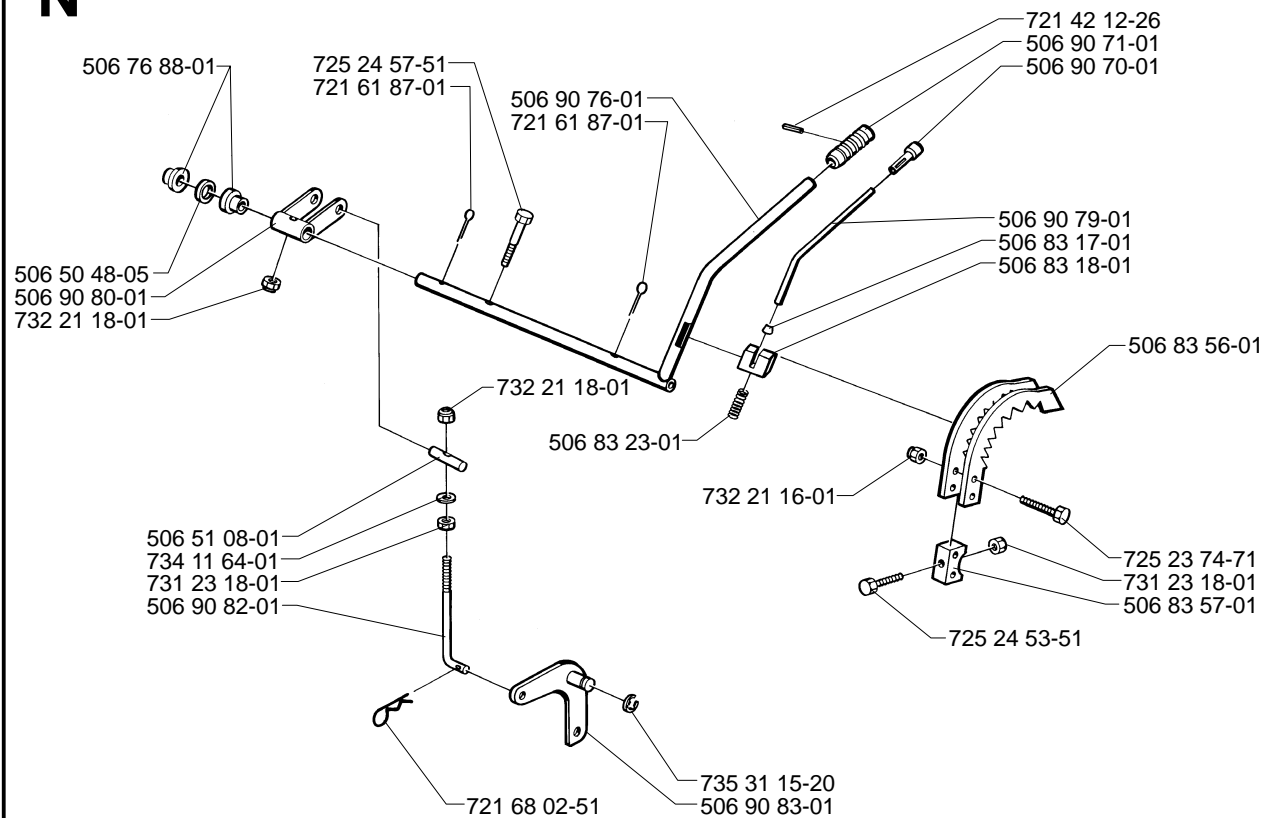
L



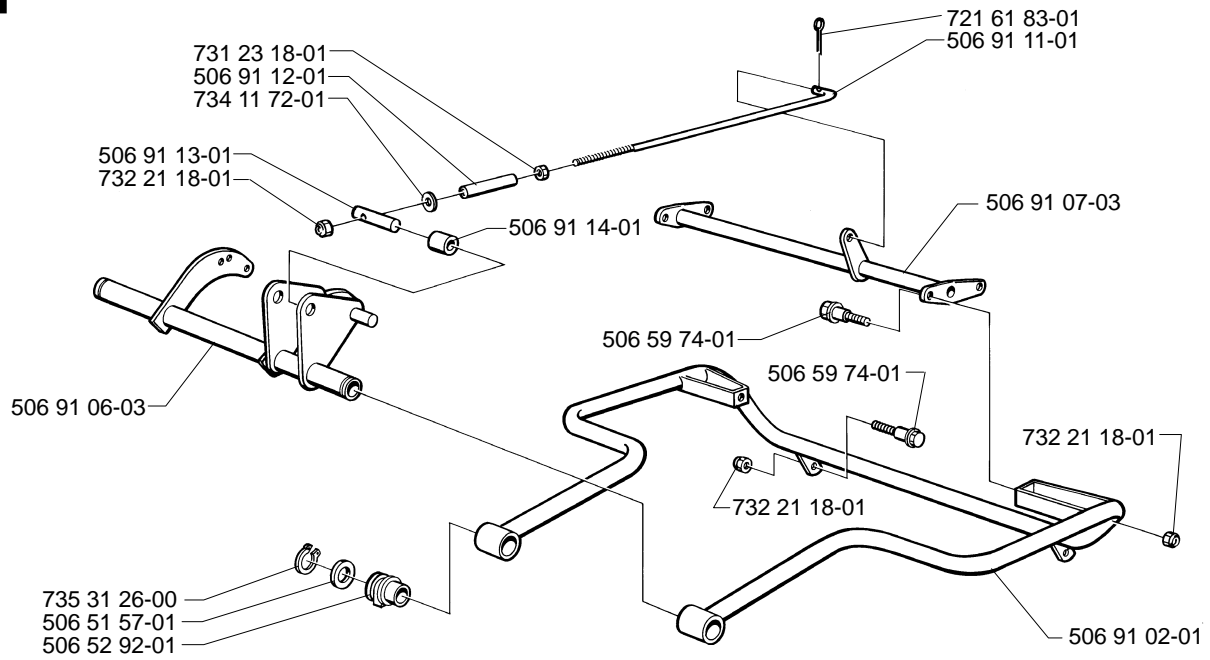
M



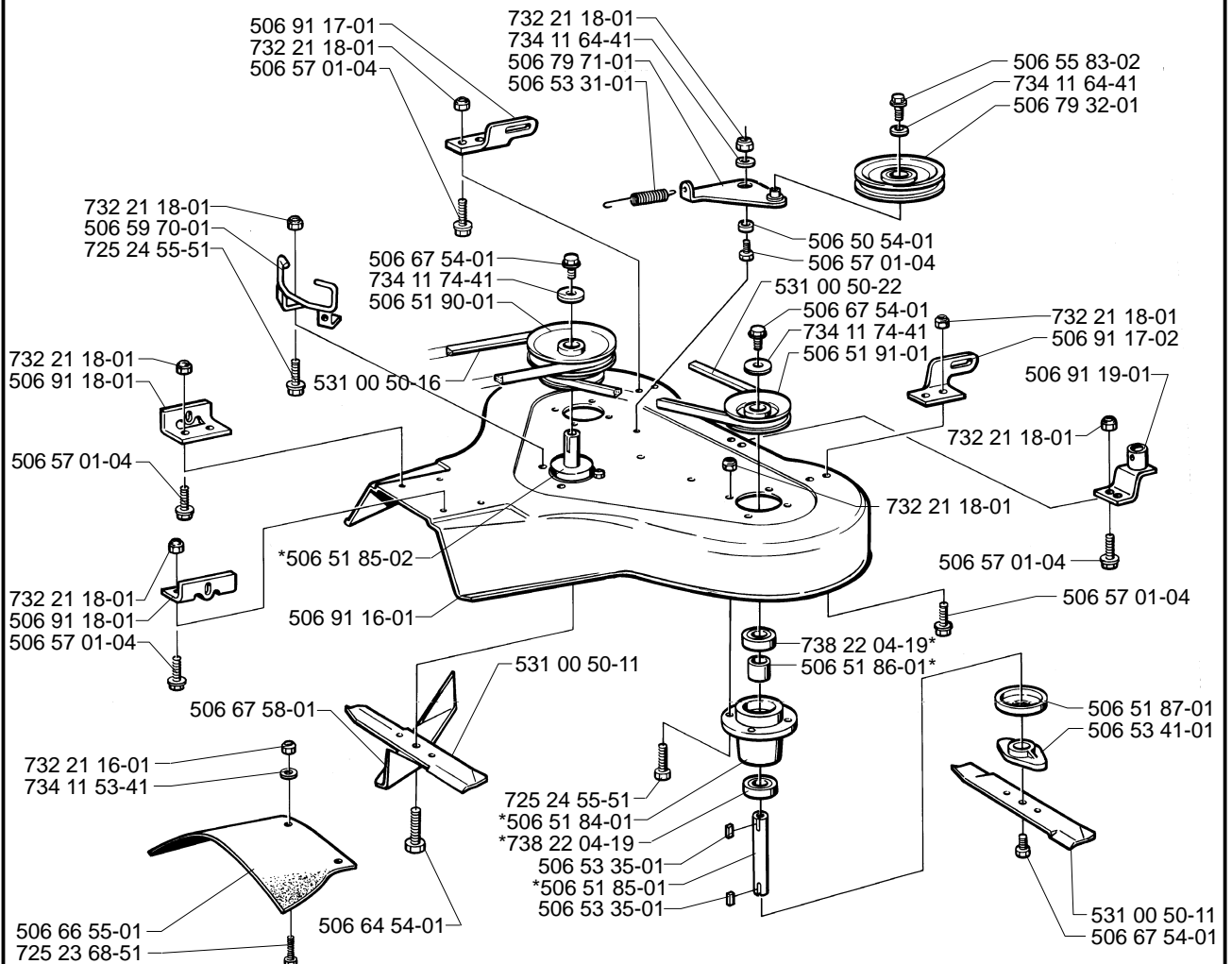
N



P

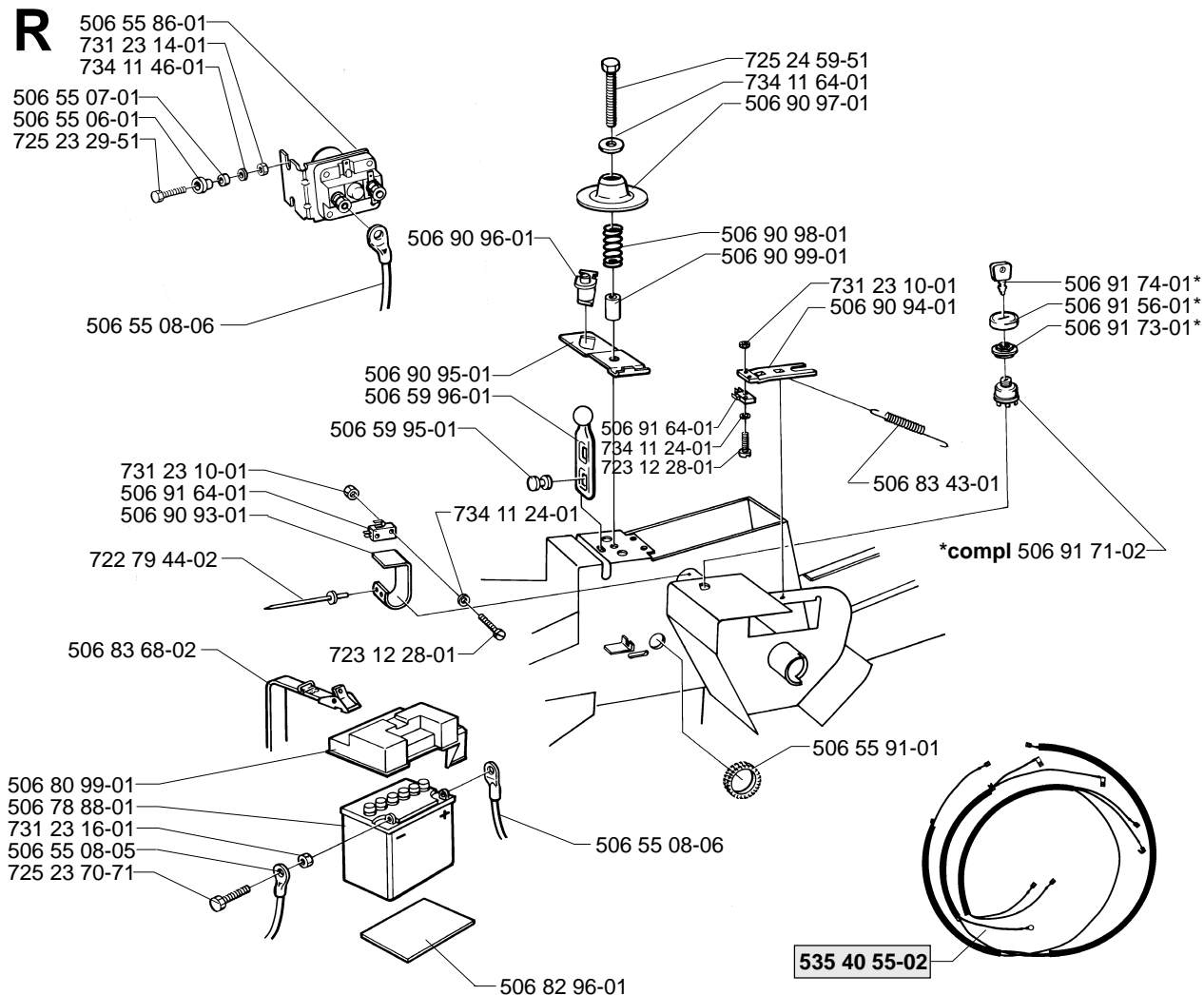


Q

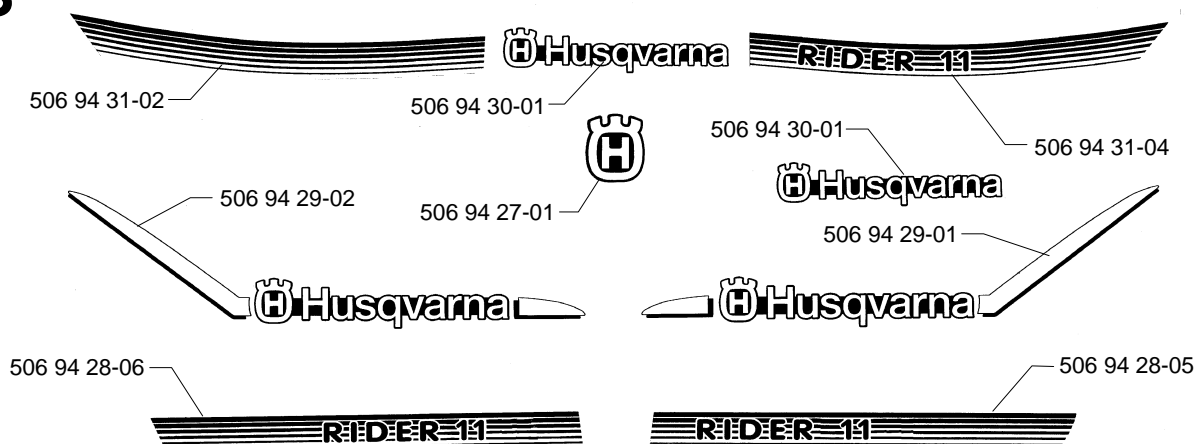


*compl 506 53 34-01 Yttre. Outer. Exterior. Äusser. Ulko.
*compl 506 53 34-02 Mitten. Centre. Centre. Zentrum. Keski.

R

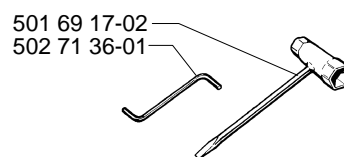


S



T

Leverans endast som reservdel
Delivery as spare part only
Nur als Ersatzteil lieferbar
Livrabable seulement comme pièce de rechange
Solo como repuesto
Zasilá se jenom jako náhradní díl



xxx xx xx-xx = New part,
Neues teil,
Nouvelle piece,
Nueva pieza,
Ny detalj