

Snowblower 7-23, 9-26, 10-30

Spare parts

Ersatzteile

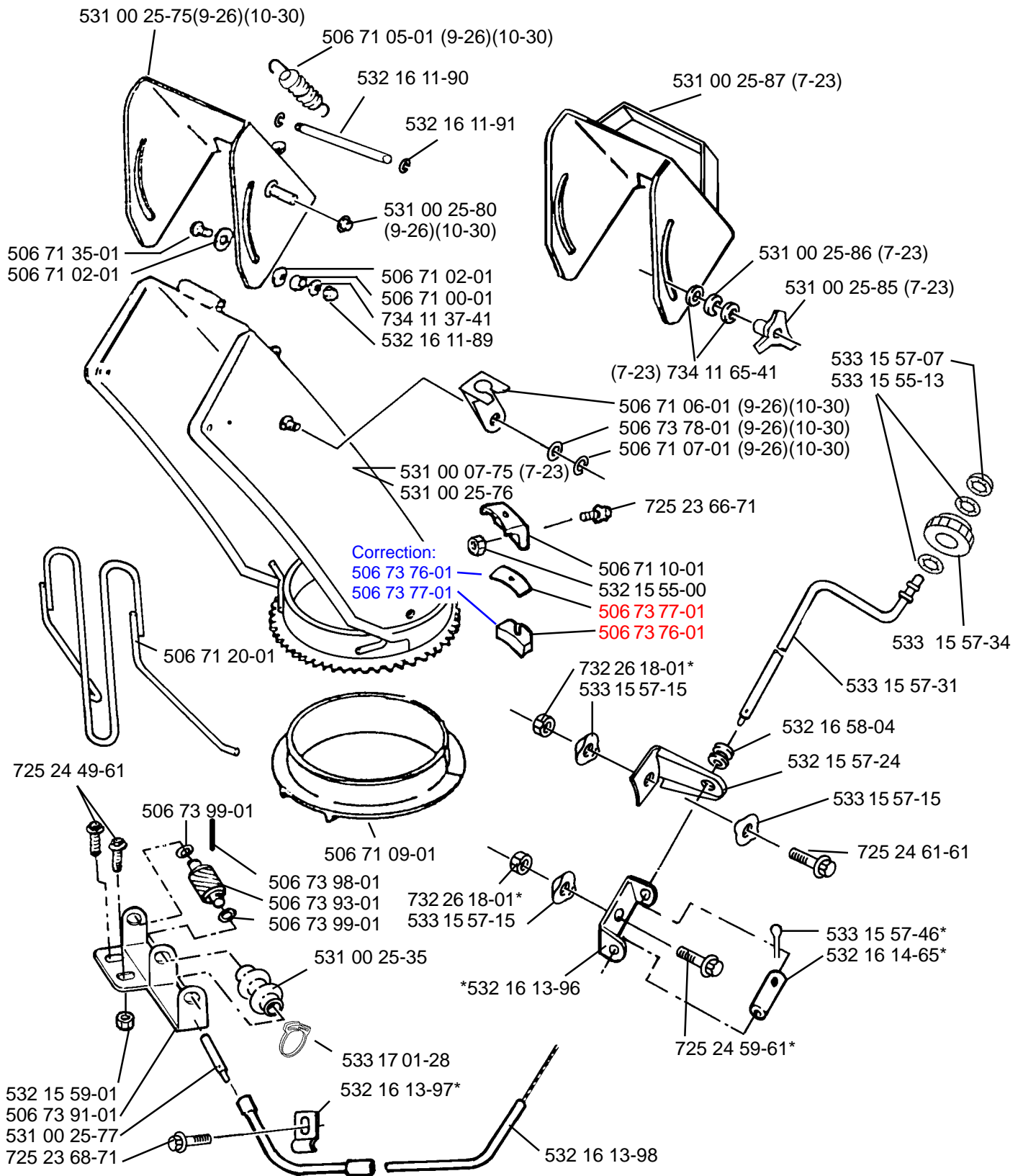
Pièces détachées

Reserve onderdelen

Repuestos

Reservdelar

A



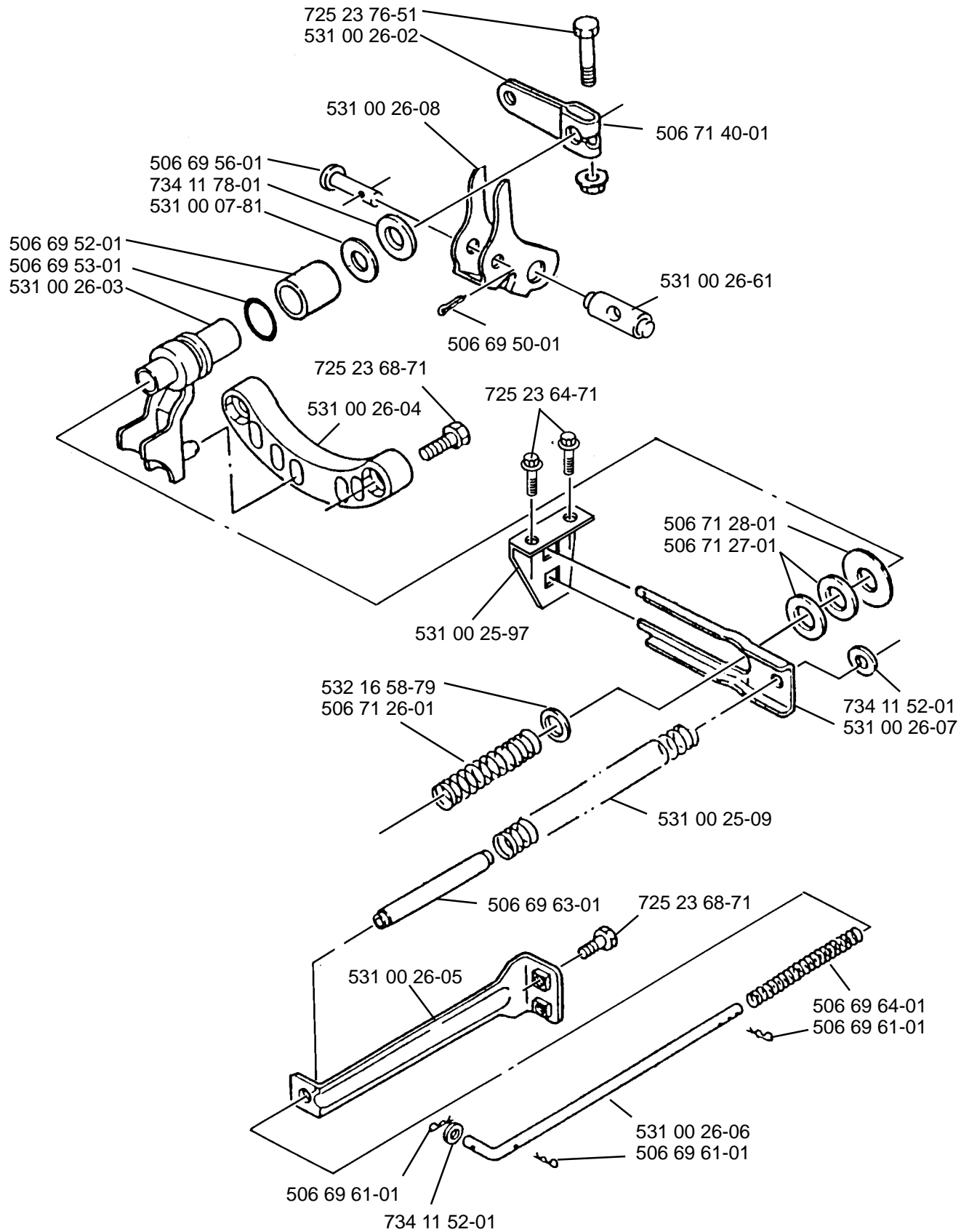
*Kit 532 16 18-74

This diagram is an exploded view of a mechanical assembly, likely a vehicle's rear suspension or steering component. It shows the relationship between various parts, including a main housing, a control arm, a shock absorber, and various mounting brackets and fasteners. The parts are labeled with alphanumeric codes, such as 531 00 26-01, 725 23 68-71, and 506 70 90-01. The diagram is oriented with a dashed line indicating the assembly path.

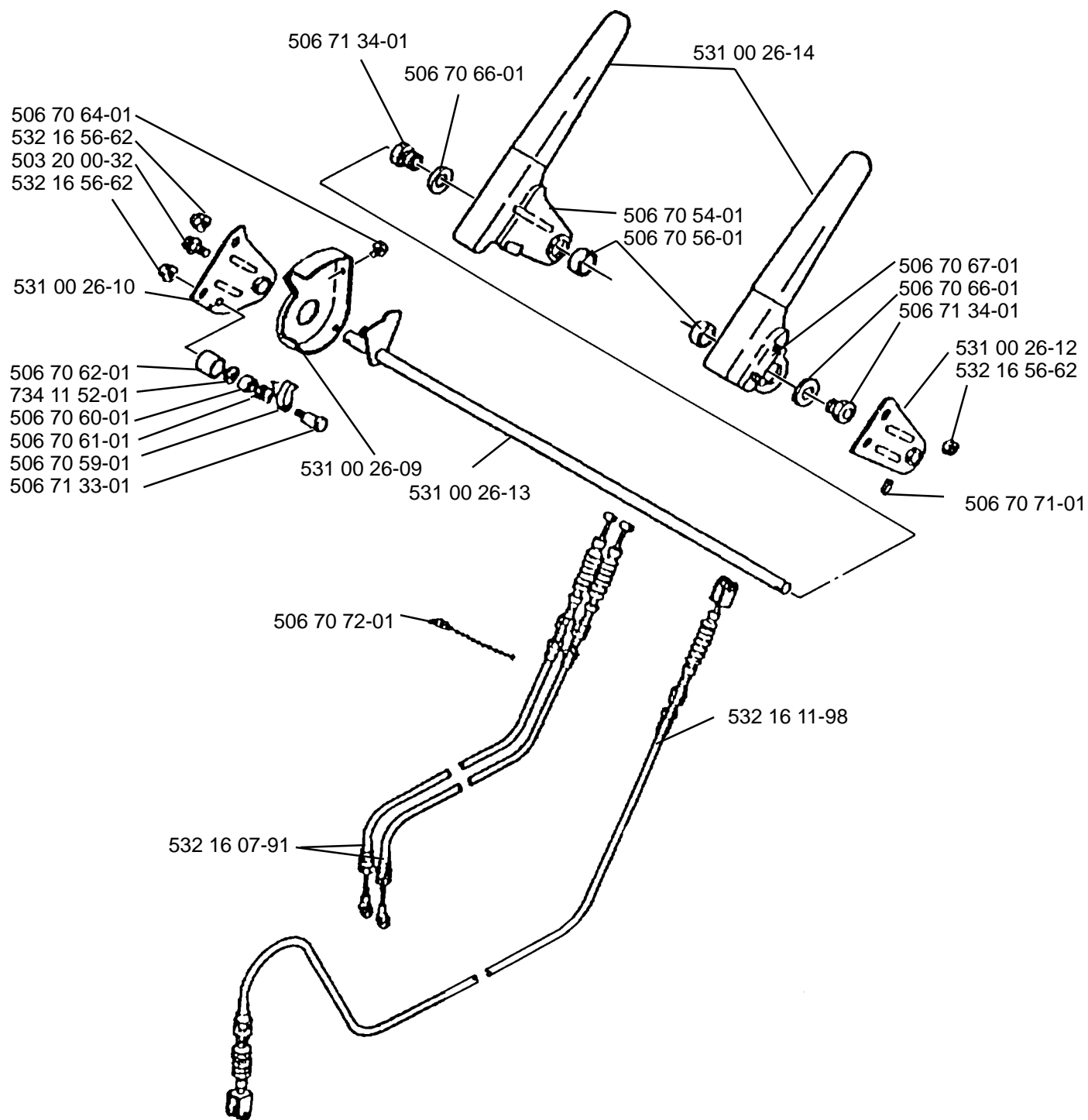
Key components and their labels include:

- Top Assembly:** 531 00 26-01, 531 00 26-59, 531 00 25-86, 531 00 26-59, 531 00 25-86, 531 00 25-99, (7-23)(9-26)531 00 07-77, 531 00 07-79, 531 00 25-98.
- Control Arm Assembly:** 531 00 25-41, 531 00 25-39, 531 00 25-40, 725 23 64-71, 506 70 90-01, 725 23 64-71, 531 00 07-77(7-23)(9-26)(10-30), 531 00 25-40, 531 00 25-97.
- Shock Absorber Assembly:** 725 23 68-71, 532 16 11-99, 725 23 64-71, 531 00 25-89, 725 23 68-71, 734 11 52-01, 734 11 52-01, 725 23 68-71, 503 20 00-32.
- Mounting Brackets and Fasteners:** 531 00 07-78, 531 00 25-96, 531 00 07-79, 531 00 25-37, 506 70 90-01, 531 00 25-41, 532 15 54-58, 532 16 11-82, 503 20 00-32, 532 16 11-86(x9), 531 00 07-79, 725 23 68-71, 531 00 25-91, 725 23 64-71, 734 11 52-01, 725 23 64-71.

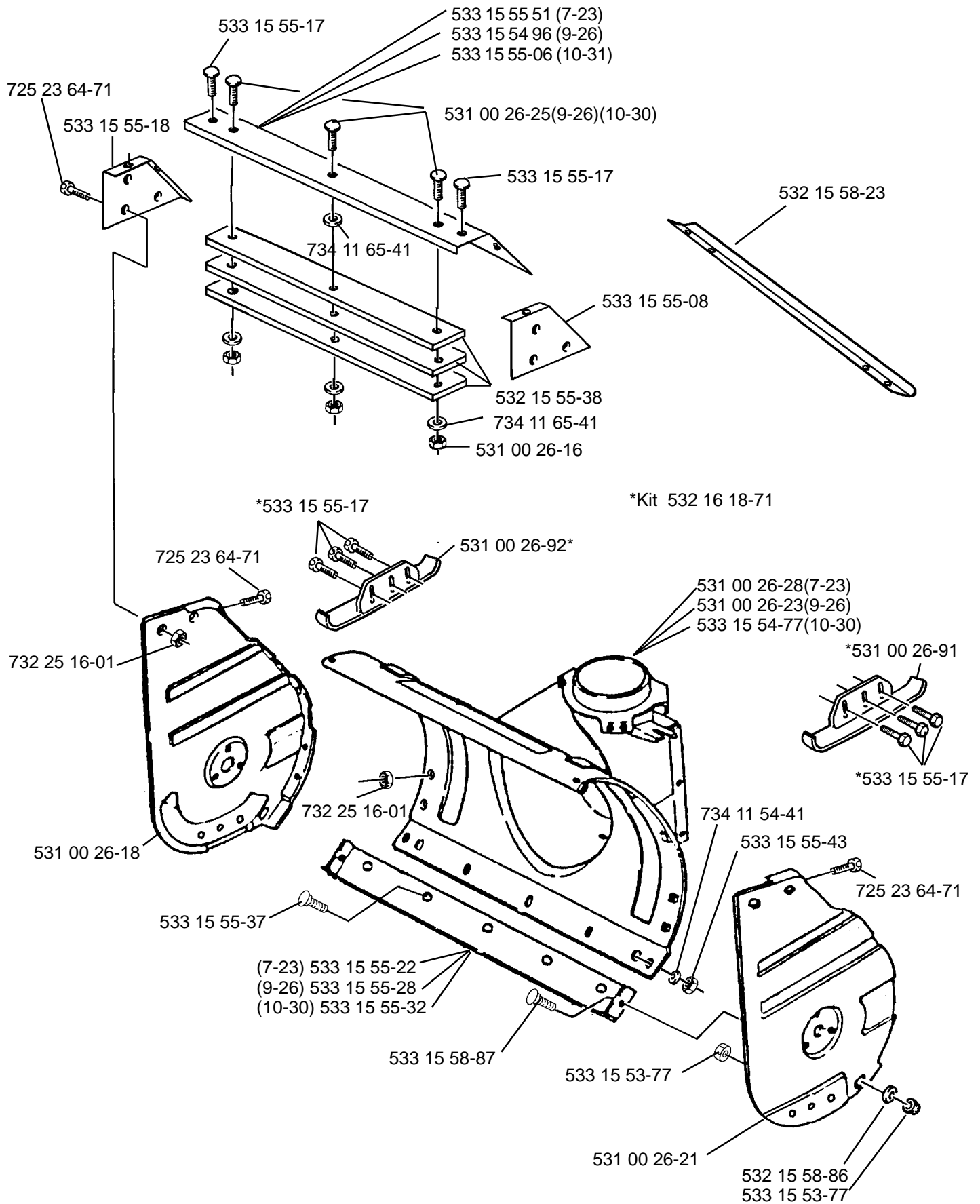
C



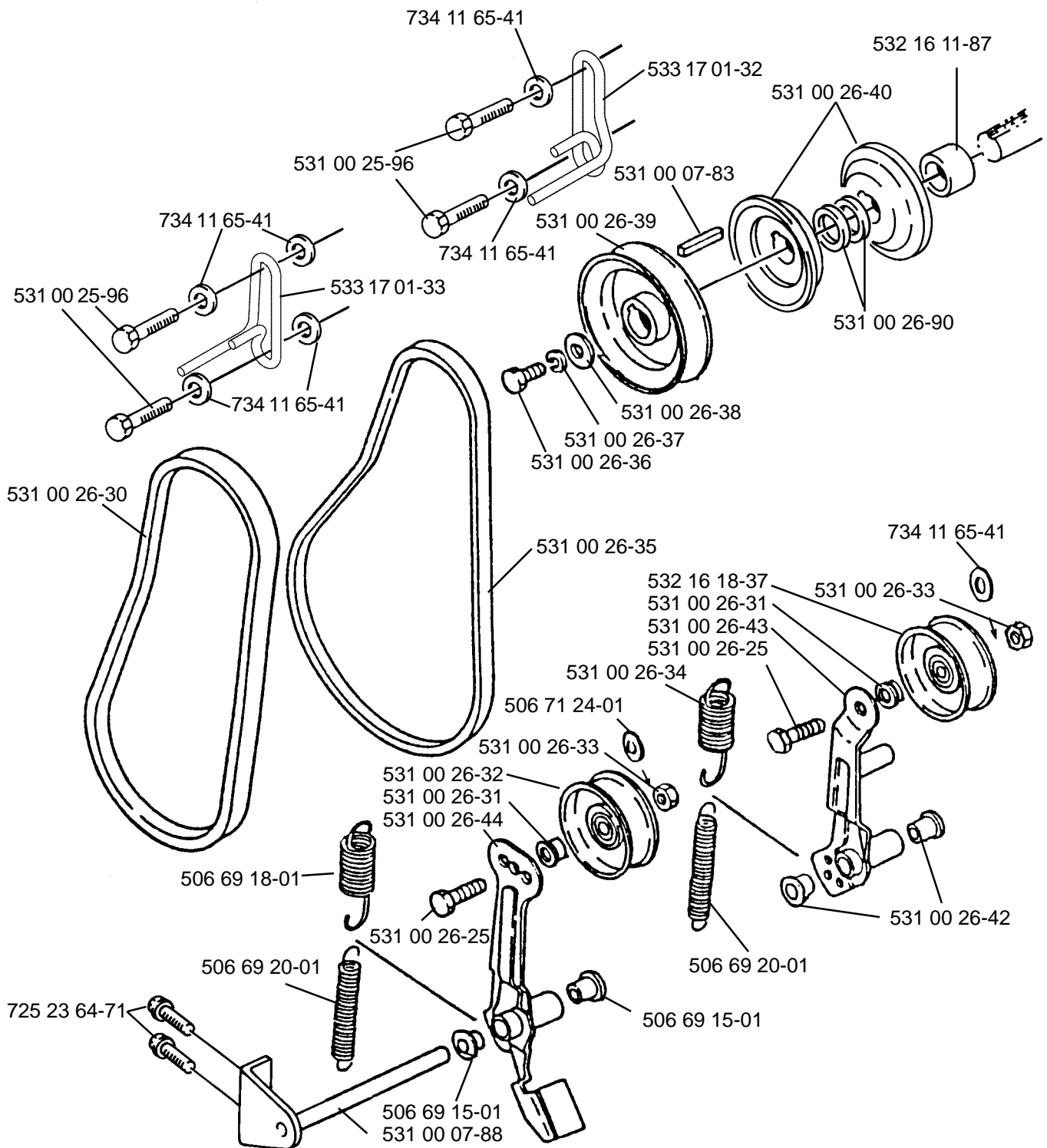
D



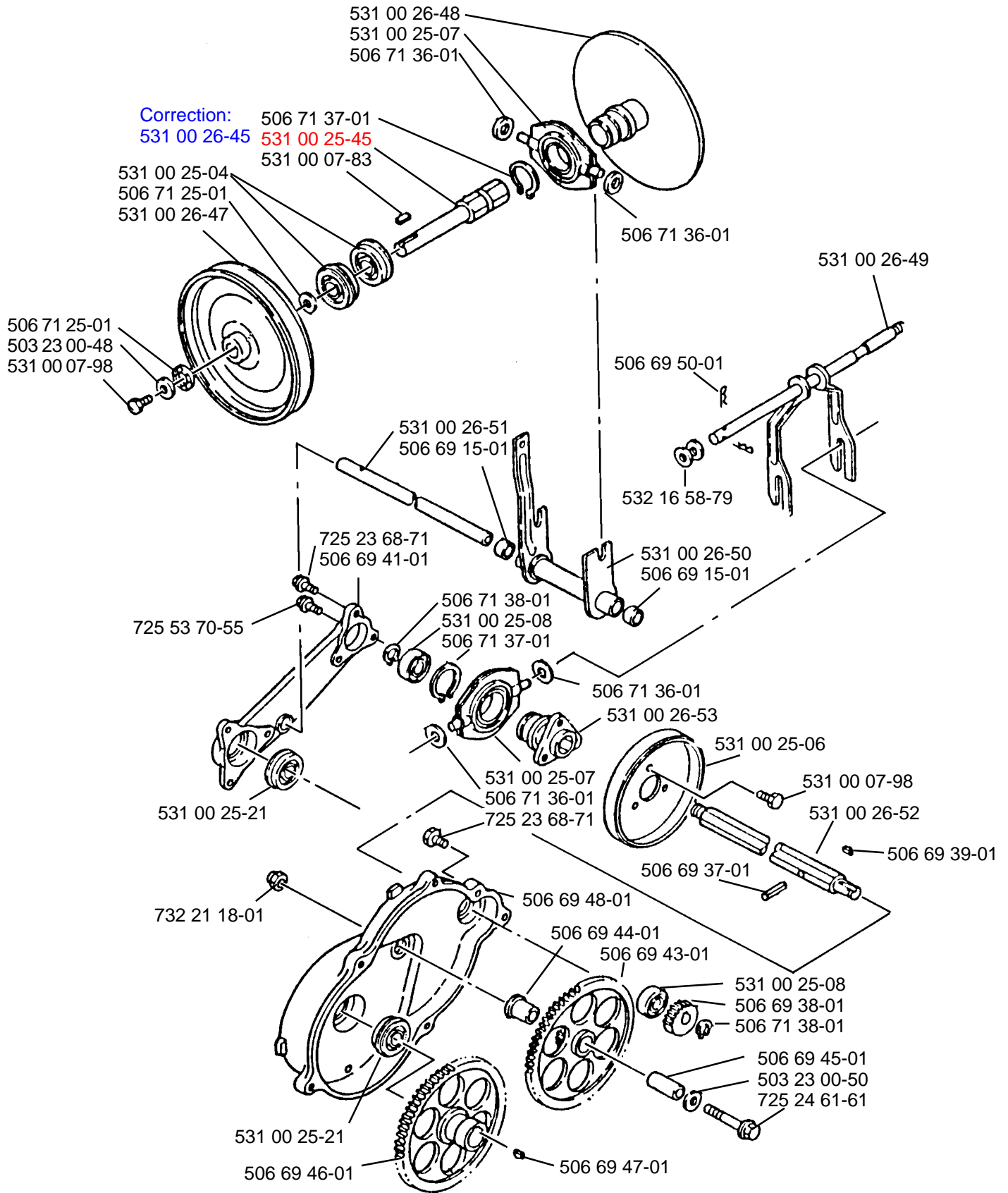
E



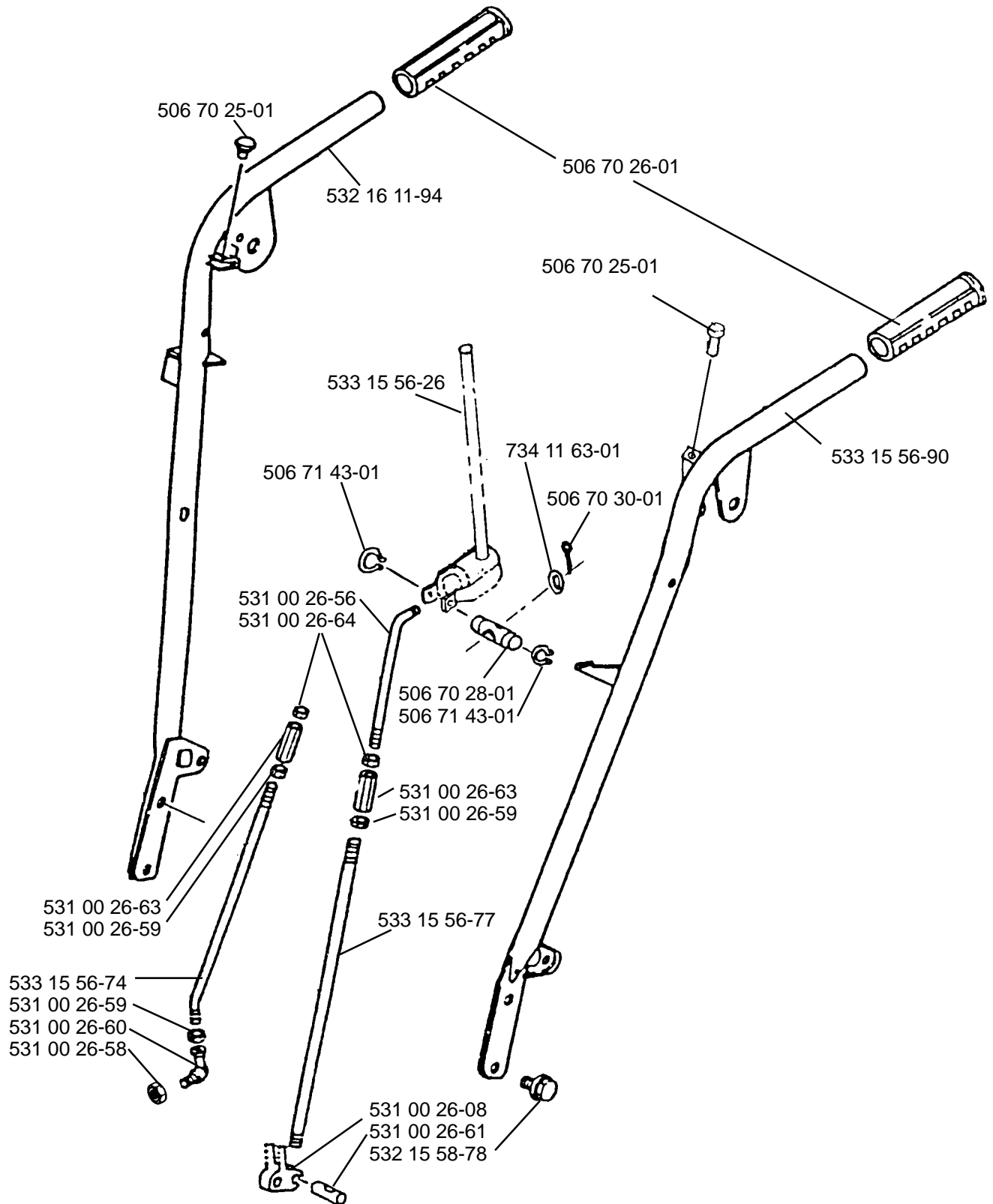
F



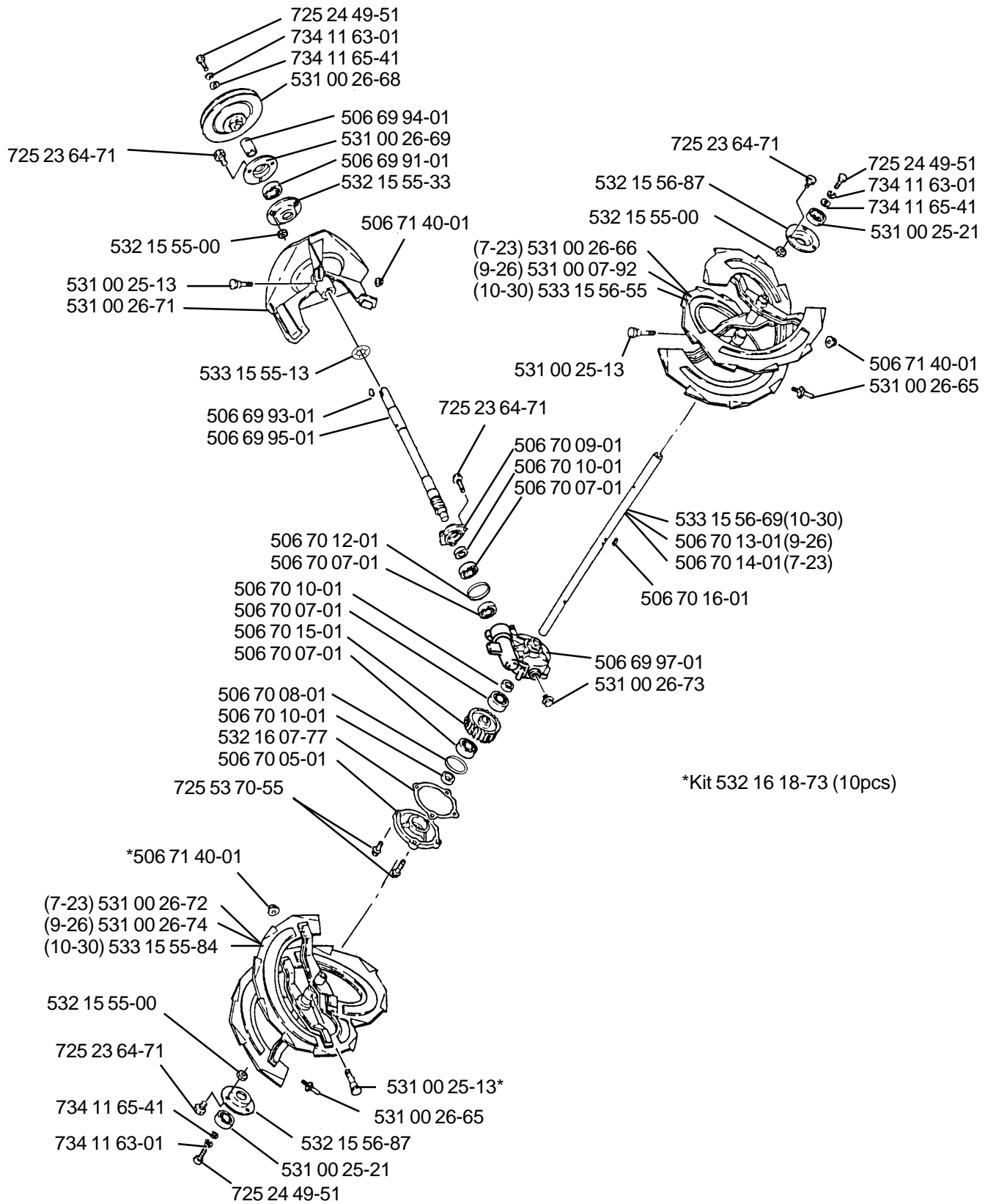
G



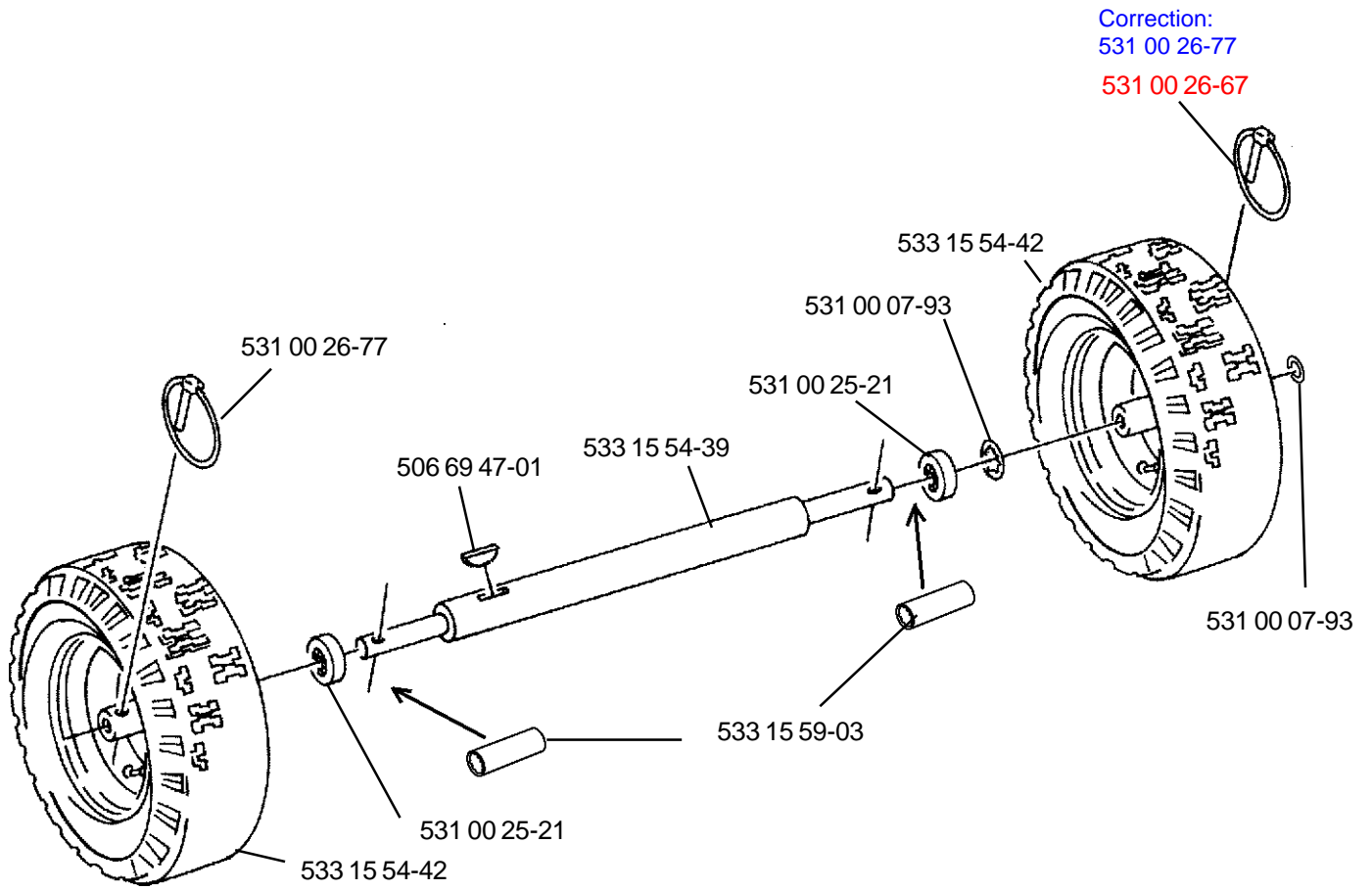
H



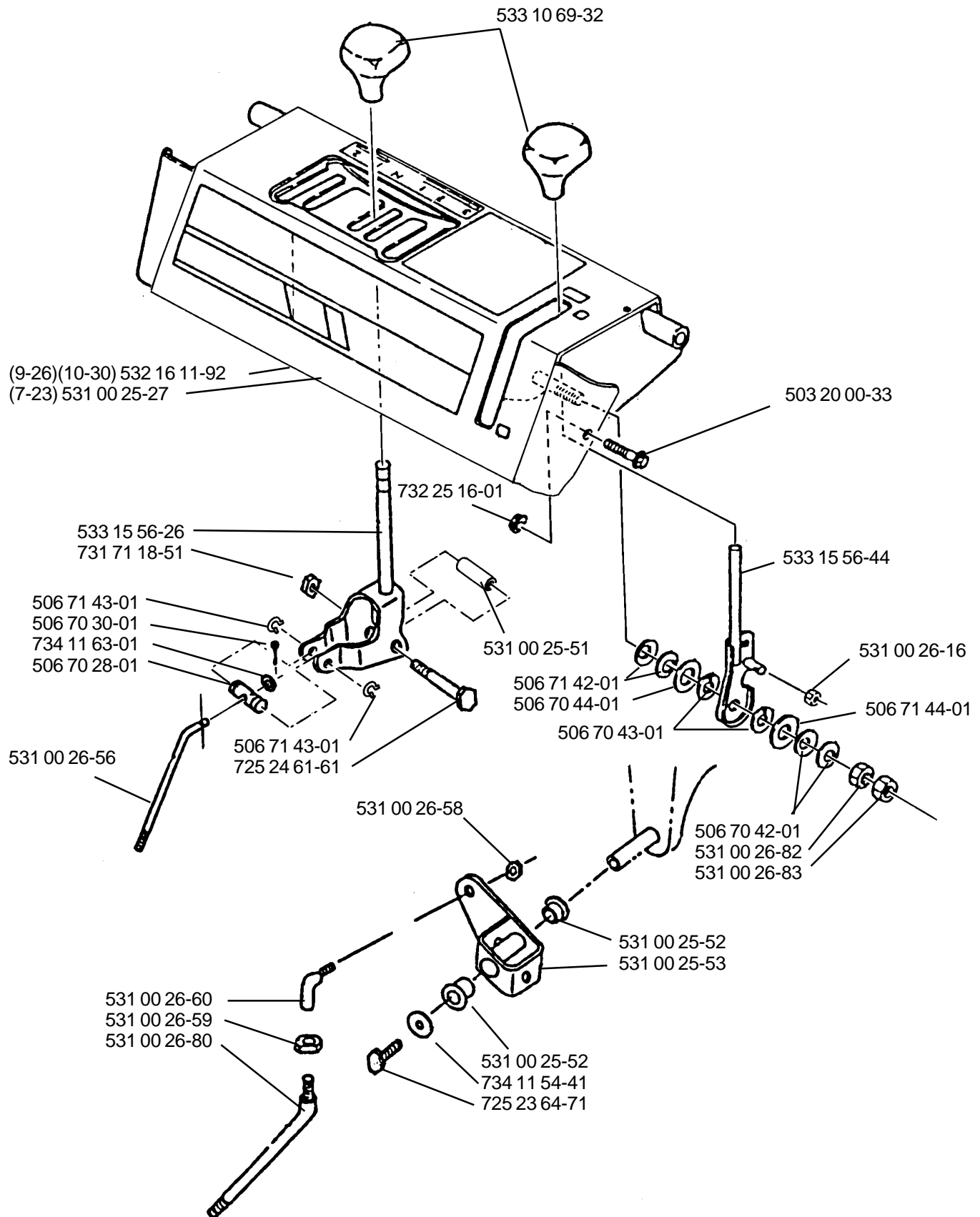
J



K



L



M

