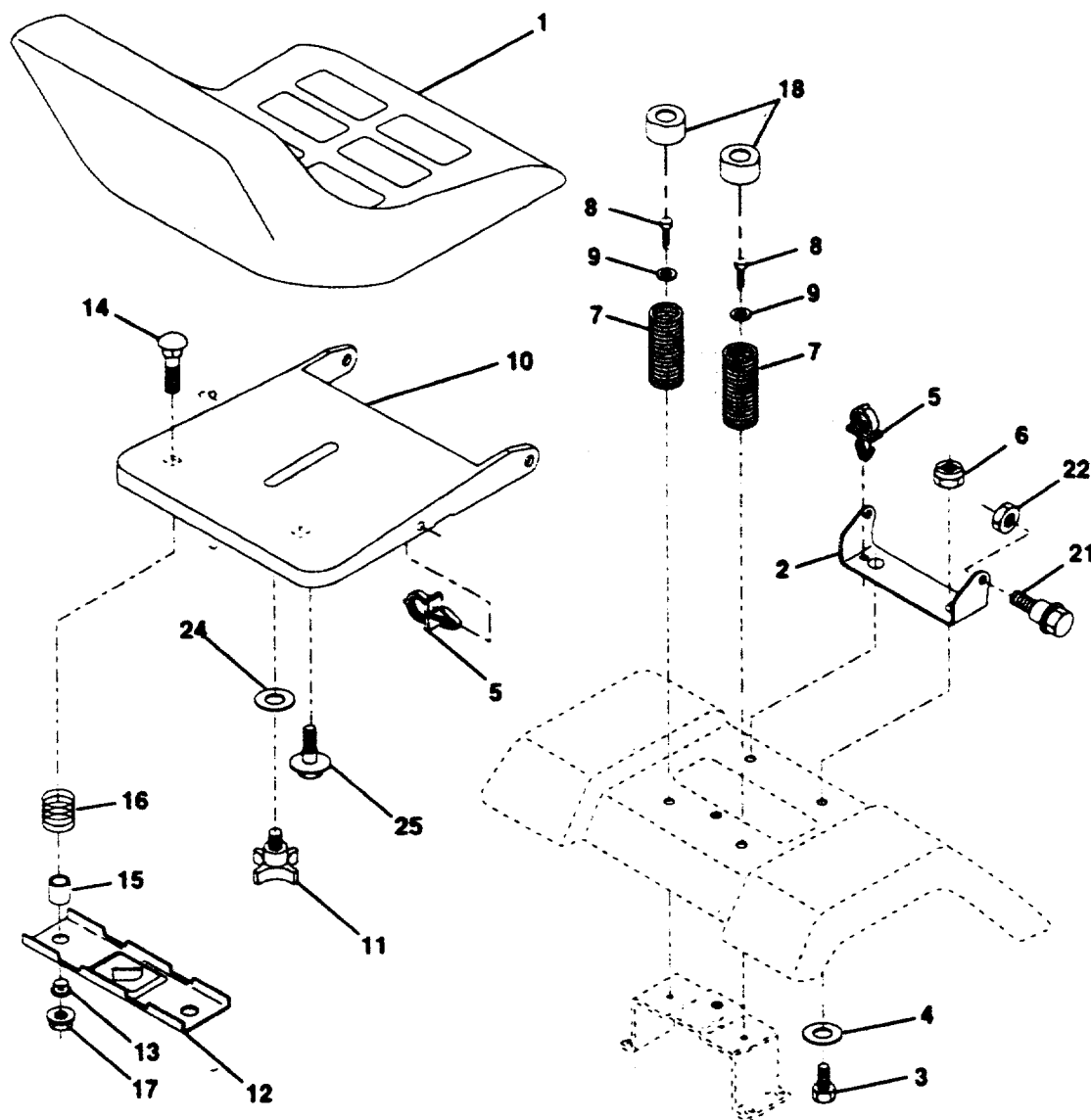


KEY NO.	PART NO.	DESCRIPTION
1	532 14 55-01	Chassis Weldment 11ga
2	532 14 03-56	Drawbar, Stretch
3	817 49 06-12	Screw Thdrol 3/8-16x3/4 Ty-tt
4	734 11 72-01	Washer 13/32 x 3/4 x 16 Ga.
6	532 14 52-06	Saddle LT Fender Shift
8	532 12 64-71	Clip Insulator .406 Mtg Hole
9	532 14 72-18	Dash
10	872 14 06-08	Bolt Carriage 3/8-16 x 1
11	532 14 69-56	Panel Pnt Dash Lh
13	532 14 69-62	Panel Dash Rh
14	817 49 06-08	Screw Thdrol 3/8-16x1/2 Ty-tt
17	532 14 97-75	Hood LT/PL Husqvarna
20	532 14 52-10	Plate Mtg. Battery Fuel Tank. 95
23	532 12 40-28	Bushing
24	874 78 06-16	Bolt Fin Hex 3/8-16unc X 1 Gr. 5
25	819 13 13-12	Washer 13/32 X 13/16 X 12 Ga
26	873 80 06-00	Nut Lock Hex W/Ins 3/8-16 Unc
28	532 14 97-76	Grille LT/PL Husqvrna
29	532 14 97-77	Lens LT/PL Husqvrna
30	532 14 30-50	Fender Pnt
31	532 13 99-76	Bracket, Fender Support
33	532 14 72-03	Footrest Pnt Lh
34	532 14 72-02	Footrest Pnt Rh
35	872 11 06-06	Bolt Rdhd Sht Sqnk 3/8-16 X3/4
37	817 49 05-08	Screw Thdrol 5/16-18 X1/2
38	532 13 98-86	Bracket, Asm. Pivot, L.H., Mower Rear
39	532 13 98-87	Bracket, Asm Pivot, R.H., Mower Rear
40	532 13 99-77	Spacer Fender Raised LT
41	532 13 99-78	Plate Extension Fender LT
48	532 13 80-96	Rivet Push Plate D Plastick Blk
49	817 49 04-12	Screw, Hexwsh. Thdrol 1/4-20 x 3/4
50	532 14 27-79	Brace
51	873 68 04-00	Nut Lock Hex W/Ins 1/4-20
52	819 09 14-16	Washer 9/32 x 7/8 x 16 Ga.
53	532 15 00-67	Bracket Pnt. Pick off LT/PL Husq:
57	874 78 04-12	Bolt Hex 1/4-20 x 3/4
58	532 15 01-27	Air Duct P/L
60	872 14 06-06	Bolt, RDHD SQNK 3/8-16 UNC x 3/4
61	819 17 14-16	Washer 17/32 x 7/8 x 16 Ga.
68	873 51 04-00	Nut Keps Hex 1/4-20
129	819 09 10-16	Washer 9/32 x 5/8 x 16 Ga.
134	532 15 01-32	Rod Support Hood LT/PL Husq.
- -	532 00 54-79	Plug Button

NOTE: All component dimensions given in U.S. inches.
1 inch = 25.4 mm



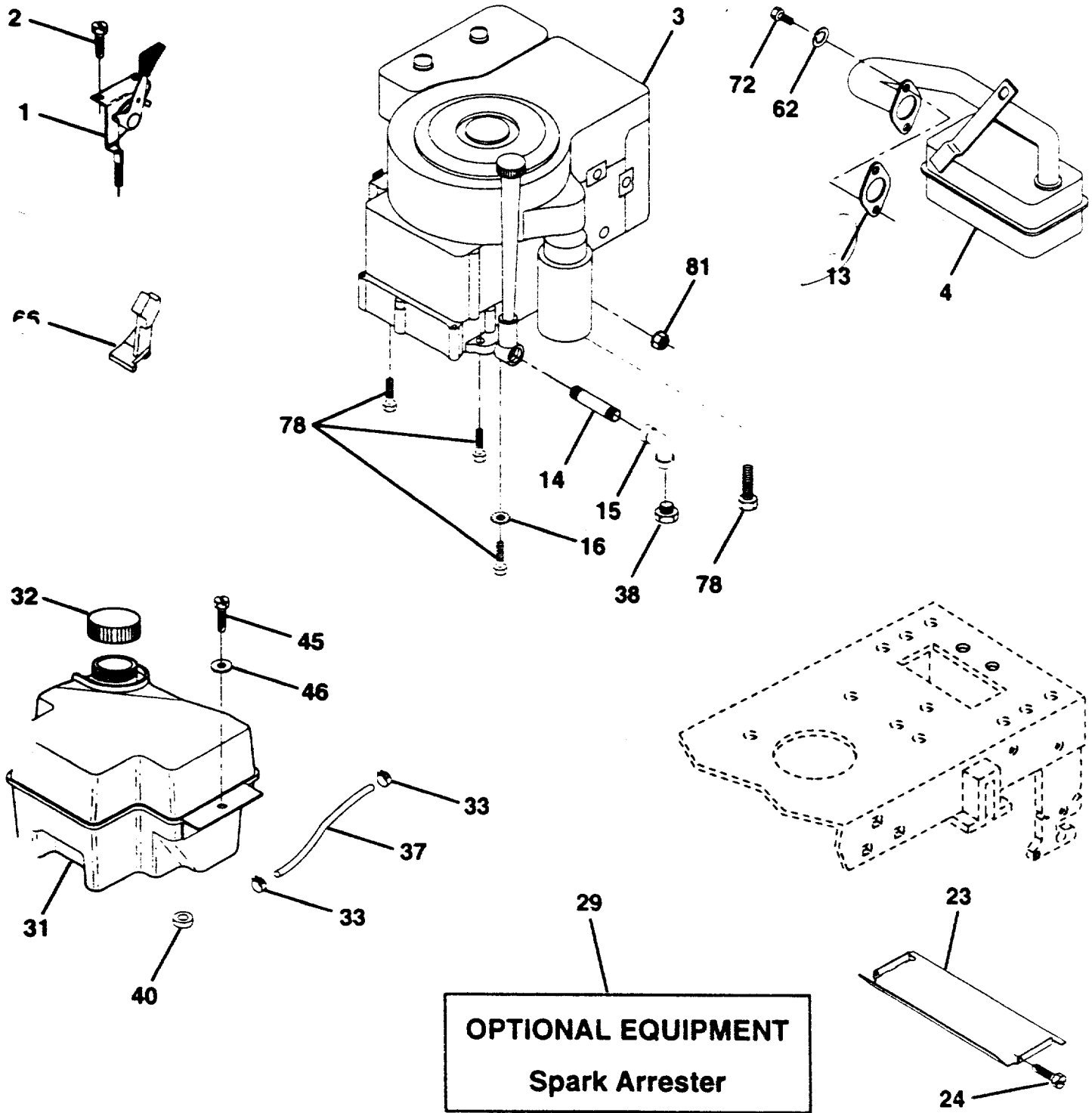
KEY NO.	PART NO.	DESCRIPTION
---------	----------	-------------

1	532 12 74-40	Seat
2	532 14 05-51	Bracket Pivot Seat
3	874 76 06-16	Bolt Fin Hex 3/8-16 UNC x 1
4	819 13 16-10	Washer, Flat 13/32 x 1 x 10 Ga.
5	532 14 50-06	Clip Push in Hinged
6	873 68 06-00	Nut Crownlock 3/8-16 Unc
7	532 12 41-81	Spring Seat Cprsn
8	817 49 06-16	Screw, Thdrol 3/8-16 x 1 TY-TT
9	819 13 16-14	Washer 13/32 X 1 X 14 Ga
10	532 14 05-52	Pan Seat
11	532 12 00-68	Knob Seat 1/2-13unc
12	532 12 12-46	Bracket Mounting Switch

KEY NO.	PART NO.	DESCRIPTION
---------	----------	-------------

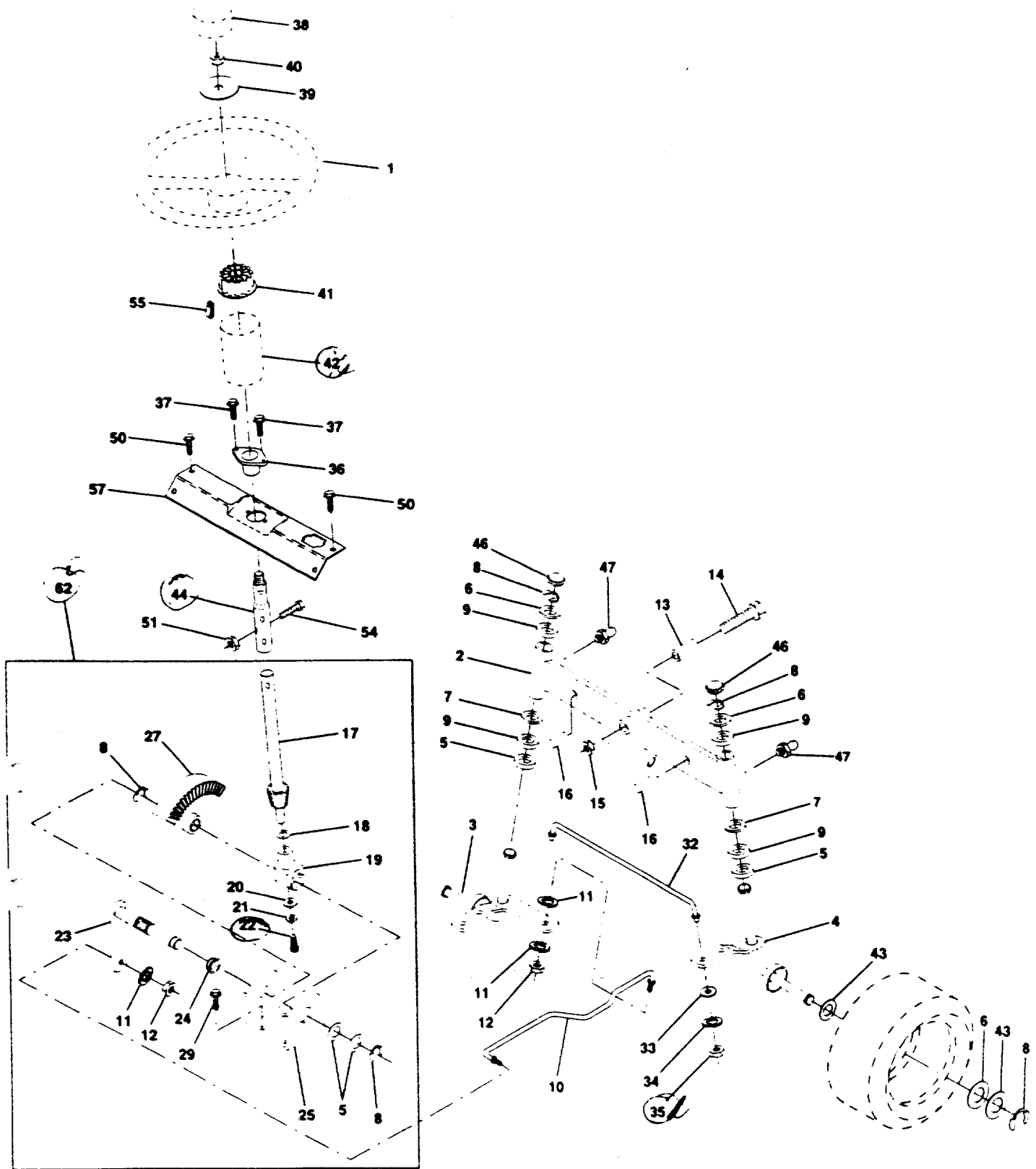
13	532 12 12-48	Bushing Snap
14	872 05 04-11	Bolt 1/4-20x1-3/8
15	532 12 12-49	Spacer Split
16	532 12 37-40	Spring Cprsn
17	532 12 39-76	Locknut 1/4 Gr. 5
18	532 12 42-38	Cap Spring
21	532 13 98-88	Bolt Shoulder 5/16-18 Unc
22	873 68 05-00	Nut Crownlock 5/16-18
24	819 17 19-12	Washer 17/32 X 1-3/16 X 12 Ga
25	532 12 70-18	Bolt Shoulder 5/16-18 X 62

NOTE All component dimensions given in U.S. inches.
1 inch = 25.4 mm



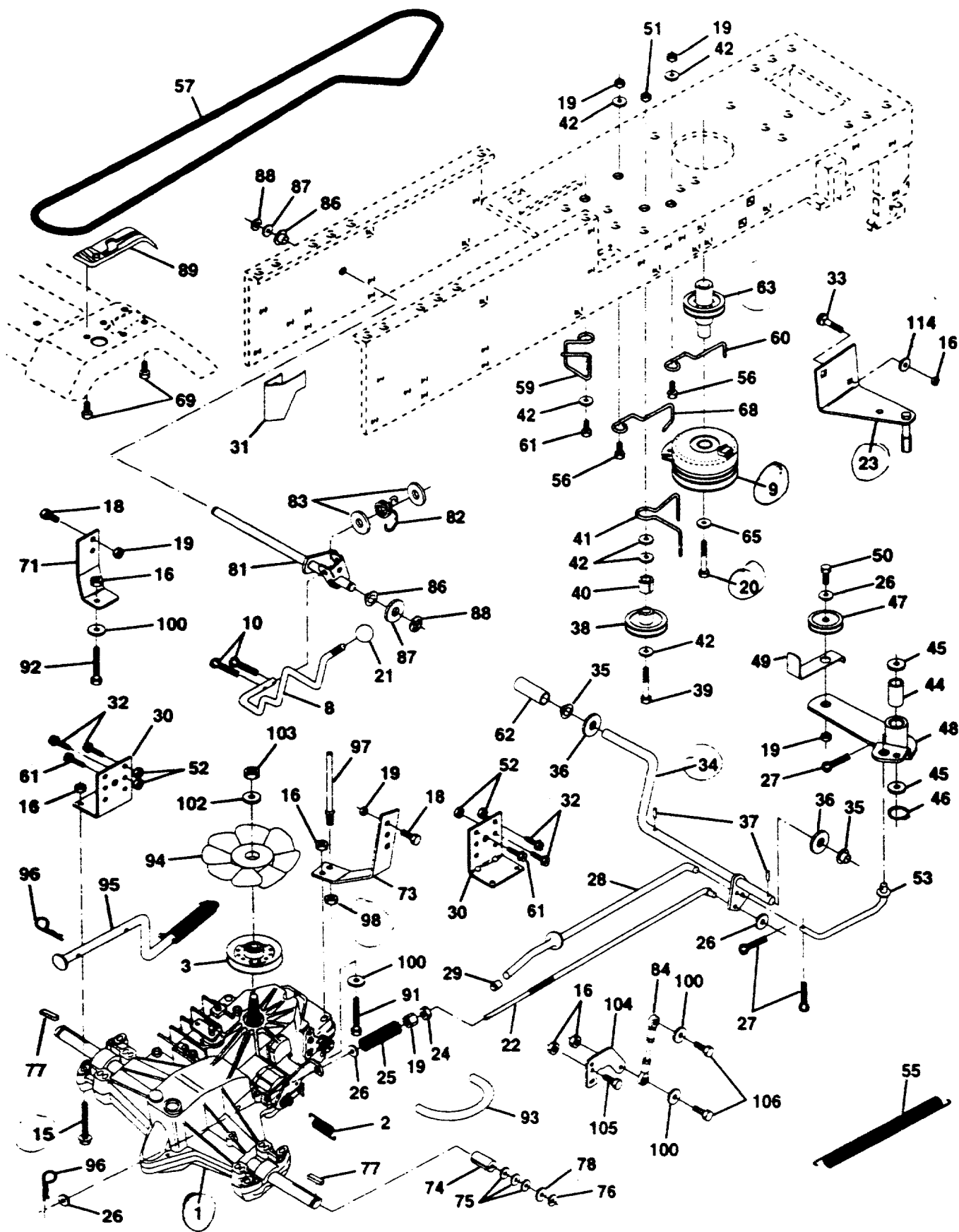
KEY NO.	PART NO.	DESCRIPTION
1	532 14 13-59	Control THTICH 23.72 LH FLG EEC
2	817 72 04-10	Screw Hex Thd Cut 1/4-20x5/8 T
3	-----	Engine 28Q777 0673-A1
4	532 13 73-52	Muffler
13	532 27 22-93	Gasket, Engine
14	813 28 03-24	Nipple Pipe 3/8 Npt X 3
15	813 20 03-00	Elbow Std 90 Degree 3/8-18 Npt
16	811 05 06-00	Washer Lock Ext Tooth 3/8
23	532 12 89-53	Shield Heat Browning LT/YT
24	817 02 10-08	Screw Tap Hex #10-24unc X 1/2
29	532 13 71-80	Kit Spark Arrestor (Flat Scm)
31	532 14 02-80	Tank Fuel Front 2 00 Gal Nat
32	532 14 05-27	Cap Asm Fuel W/sym Vented
33	532 12 34-87	Clamp Hose Black
37	532 17 70-40	Line Fuel 20" Front Fuel Tank
38	-----	Plug Oil Drain (Order From Engine Manufacturer)
40	532 12 40-28	Bushing
45	817 49 04-12	Screw Hex wsh Thdrol 1/4-20 x 3/4
46	819 09 14-16	Washer 9/32 x 7/8 x 16 Ga.
62	810 04 05-00	Washer, Lock Hvy HLCL Spr 5/16
66	532 12 79-51	Stop Throttle
72	871 07 05-12	Screw Hex Hd Cap 5/16-18 x 3/4
78	817 49 06-20	Screw Thdrol. 3/8-16 x 1-1/4
80	874 76 05-08	Bolt Hex Hd 5/16-18 UNC x 1/2
81	532 12 88-61	Nut Flange 1/4-20 Starter Nut

NOTE: All component dimensions given in U.S. inches
1 inch = 25.4 mm



KEY NO.	PART NO.	DESCRIPTION
1	532 12 44-15	Wheel Steering Auto Grey
2	532 14 20-33	Axle Asm Fr LT W/gzks 38/42
3	532 13 52-27	Spindle Asm LH
4	532 13 52-28	Spindle Asm RH
5	532 12 49-31	Bearing Race Thrust Harden
6	532 12 17-48	Washer 25/32 X 1-5/8 X 16 Ga
7	819 27 20-16	Washer 27/32 X 1-1/4 X 16 Ga
8	812 00 00-29	Ring Klip #t5304-75
9	532 12 49-37	Bearing Col Strg Blk
10	532 13 04-68	Link Draq Sol Ball Jt 20 064
11	810 04 06-00	Washer Lock Hvy Hlcl Spr 3/8
12	873 61 06-00	Nut Fin Hex 3/8-24 Unf
13	532 11 04-38	Spacer Bearing Axle Front
14	874 01 10-56	Bolt Hex 5/8-11 Unc X 3-1/2
15	873 90 10-00	Nut Lock Flange 5/8-11 Unc
16	532 13 26-24	Pin Axle 5/8 X 1 55/1 54 Lg
17	532 14 01-76	Shaft Asm Strg Private Label
18	532 05 70-79	Washer Thrust 515x 750x 033
19	532 12 40-35	Support Sheft
20	532 12 66-84	Washer Shim 1/4 X 5/8 X 062
22	871 10 04-10	Screw Cap SCKT HD Phos and Oil
21	810 04 04-00	Washer Lock Hvy Helical 1/4
23	532 12 75-01	Shaft Asm Pittman
24	532 10 98-16	Nyliner Snap In
25	532 12 40-36	Bracket Steering
27	532 13 68-74	Gear Sector
29	817 49 06-12	Screw Thdrol 3/8-16x3/4 Ty-tt
32	532 13 04-67	Rod Tie. Ball Jt Sol 19.75 Elec.
33	819 11 12-16	Washer 11/32 x 3/4 x 16 Ga.
34	810 04 05-00	Washer Lock Hvy HLCL Spr 5/16
35	873 61 05-00	Locknut 5/16-24 UNF 3847
36	532 10 28-03	Bushing Strg
37	817 43 10-08	Screw Slftp #10-16 X 1/2 Ty-b
38	532 12 44-16	Insert Cap Strg Wh Au
39	819 13 38-08	Washer 13/32 X 2-3/8 X 8 Ga
40	532 12 47-01	Nut Lock Center 3/8-24unf
41	532 10 48-20	Adaptor Wheel Strg 640/ 635id
42	532 15 03-90	Boot Steering Shaft
43	532 12 17-49	Washer 25/32 X 1 1/4 X 16 Ga
44	532 14 66-90	Shaft Extention Steering
46	532 12 12-32	Cap Spindle Fr Top Blk
47	532 12 48-36	Fitting Grease
50	817 49 04-12	Screw Hex Wsh Thdrol 1/4-20 x 3/4
51	873 80 05-00	Nut Lock Hex w/Ins 5/16-18
54	874 78 05-20	Bolt Fin Hex 5/16-18 Unc x 1-1/4
55	532 14 02-85	Clip Tinnerman
57	532 14 01-72	Support Shaft Steering
62	532 14 96-86	Kit, Steering Assembly

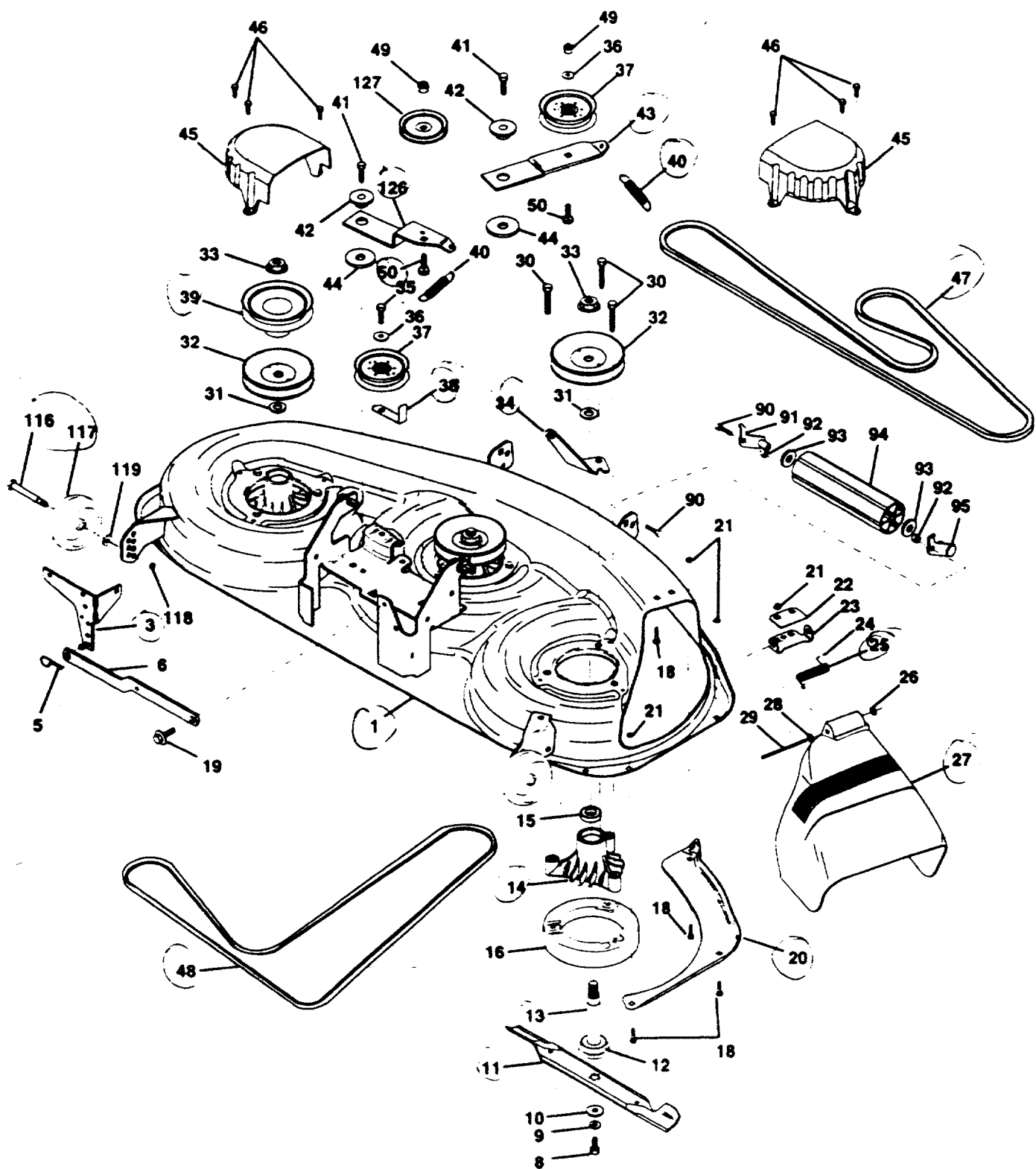
NOTE: All component dimensions given in U.S. inches. 1 inch = 25.4 mm.



KEY NO.	PART NO.	DESCRIPTION
1	532 15 00-71	Transaxle Assembly, 310-0650
2	532 14 24-31	Spring, Return, Brake
3	532 14 39-95	Pulley, Transaxle
8	532 14 10-03	Rod Shif Fender LT
9	532 14 50-28	Clutch, Elect. EVX LT Mag 5217-2
10	876 02 04-16	Pin Cotter 1/8 x 1 CAD
15	874 78 05-44	Bolt Hex Flghd 5/16-18 Gr. 5
16	873 80 05-00	Nut Lock Hex W/ins. 5/16-18 Unc P
18	874 78 06-16	Bolt Fin Hex 3/8-16 Unc x 1 Gr. 5
19	873 80 06-00	Nut Lock Hex W/Wsh 3/8-16 Unc
20	532 15 02-80	Bolt Hex 7/16-20 x 4-1/4 Ga. 5
21	532 12 12-74	Knob, Duckhead
22	532 14 56-27	Rod, Brake Hydro
23	532 14 02-75	Bracket, Asm Clutch Mtg EVX
24	873 35 06-00	Nut
25	532 10 68-88	Spring, Brake Rod
26	819 13 13-16	Washer
27	876 02 04-12	Pin Cotter 1/8 x 3/4 CAD.
28	532 14 52-04	Rod, Parking Brake
29	532 07 18-73	Cap, Parking Brake
30	532 13 08-07	Bracket, Transaxle
31	532 12 72-75	Keeper Belt Lh
32	874 76 05-12	Bolt Hex Hd 5/16-18 Unc x 3/4
33	872 14 05-06	Bolt Rdhd Sqnk 5/16-18 UNC x 3/4
34	532 14 90-01	Shaft, Foot Pedal
35	532 12 01-83	Bearing, Nylon
36	819 21 16-16	Washer
37	532 12 49-63	Pin, Roll
38	532 12 36-74	Pulley, Idler, Flat
39	874 76 06-44	Bolt
40	532 12 49-65	Spacer, Split
41	532 10 90-70	Keeper, Belt Retainer
42	819 13 13-12	Washer 13/32 x 13/16 x 12 Gauge
44	532 10 57-06	Bearing, Nylon
45	532 11 08-12	Washer, Hardened
46	812 00 00-39	Ring, Klip
47	532 12 77-83	Pulley, Idler, V-Groove
48	532 12 37-89	Bellcrank Assembly
49	532 12 32-05	Retainer, Belt
50	874 76 06-24	Bolt
51	873 68 06-00	Nut
52	873 68 05-00	Nut Crownlock 5/16-18
53	532 10 57-10	Link, Clutch

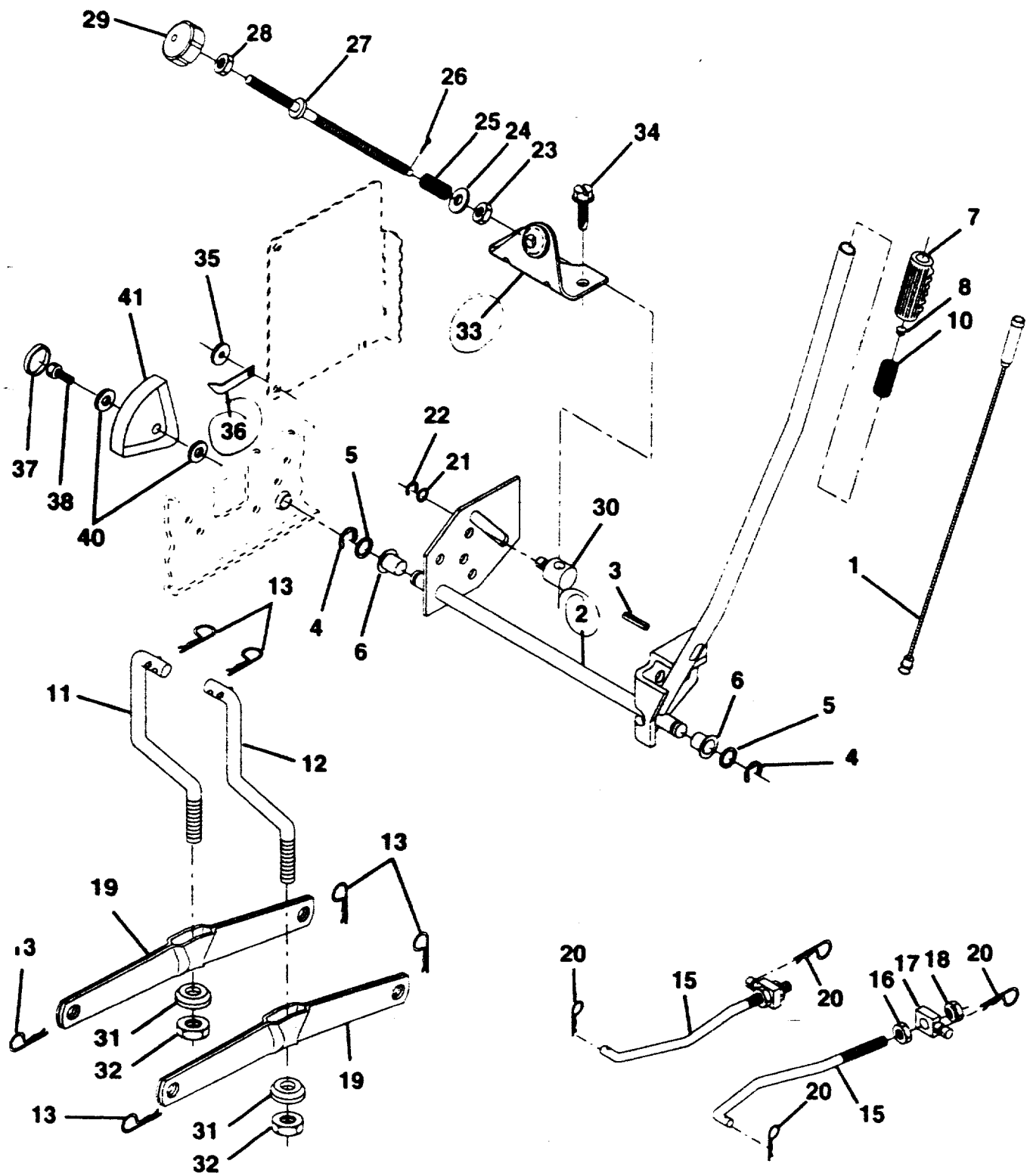
KEY NO.	PART NO.	DESCRIPTION
55	532 10 57-09	Spring, Return, Clutch
56	874 76 06-20	Bolt Hex 3/8-16 UNC x 1-1/4
57	532 14 02-94	V-Belt, Ground Drive
59	532 14 03-12	Keeper, Center Span
60	532 10 57-30	Keeper Belt Engine
61	817 49 06-12	Screw Thdrol. 3/8-16 x3/4 Ty. TT
62	532 12 35-33	Cover, Pedal
63	532 14 58-68	Pulley, Clutch Electric EVX
65	810 04 07-00	Washer
68	582 12 12-18	Keeper Belt Engine
69	532 14 24-32	Screw
71	532 14 01-58	Strap Torque Lh Hydro
73	532 14 01-57	Strap Torque Rh Hydro
74	532 12 11-99	Spacer, Split
75	532 12 17-49	Washer 25/32 x 1-1/4 x 16 Gauge
76	812 00 00-01	E-Ring
77	532 12 35-83	Key, Square
78	532 12 17-48	Washer 25/32 x 1-5/8 x 16 Gauge
81	532 14 01-54	Shaft Asm Cross Hydro
82	532 12 37-82	Spring Torsion T/A
83	819 17 12-16	Washer 17/32 x 3/4 x 16 Ga.
84	532 14 05-48	Rod, Tie Hydro
86	532 07 12-08	Bushing Rod Steering 629/632 ID
87	819 21 20-16	Washer 21/32 x 1-1/4 x 16 Ga.
88	812 00 00-08	Ring Klip #5304-62
89	532 13 99-88	Console, Shift
91	874 78 05-36	Bolt Fin Hex 5/16-18 x 2-1/4
92	874 78 05-24	Bolt Fin Hex 5/6-18 Unc x 1-1/2
93	532 14 25-64	Line Fuel Hydro 4"
94	532 14 04-62	Fan, Hydro 7"
95	532 14 46-43	Control Asm Bypass Hydro
96	532 12 47-88	Retainer Spring 1" Zinc/Cad
97	532 14 04-69	Keeper Belt Rh Hydro
98	873 68 06-00	Nut Keps Hex 3/8-16 Unc
100	819 11 12-16	Washer 11/32 x 3/4 x 16 Ga.
102	532 14 13-22	Washer, Bellville .50 ID x 1.50 D
103	873 94 08-00	Nut Nylon Insert 1/2-20 Unf
104	532 14 01-56	Arm, Control Hydro
105	871 07 05-16	Screw Cap Hex 5/16 x 18 x 1
106	874 78 05-20	Bolt Fin Hex 5/16-18 Unc x 1-1/4
114	734 11 63-01	Washer 11/32 x 3/4 x 14 Ga.

NOTE: All component dimensios give in U.S.inches
1 inch = 25.4 mm.



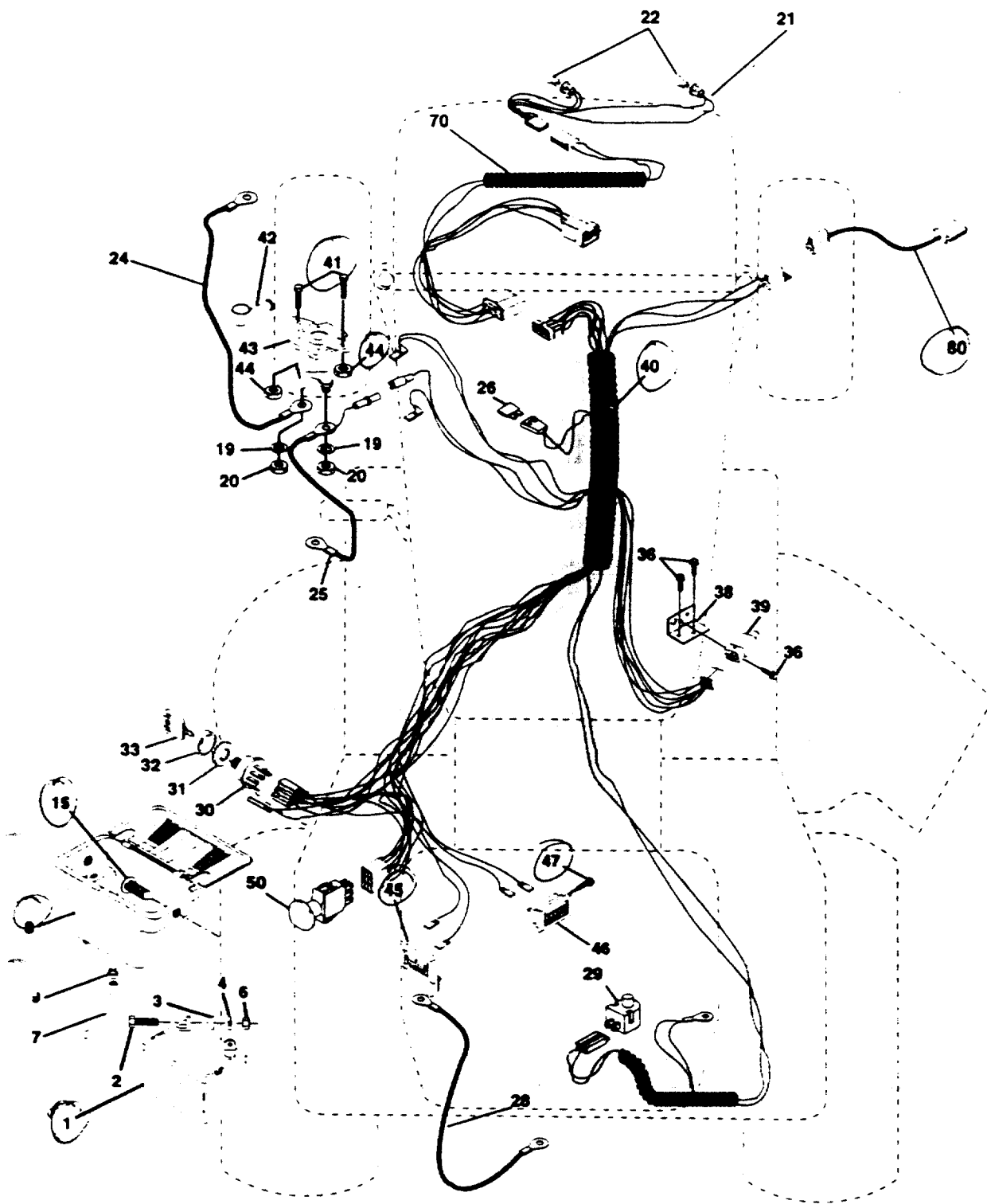
KEY NO.	PART NO.	DESCRIPTION	KEY NO.	PART NO.	DESCRIPTION
1	532 14 50-08	Deck Asm., Mower 46"	36	819 13 13-16	Washer 13/32 x 13/16 x 16 Ga.
3	532 13 84-57	Bracket Asm., Sway Bar	37	532 13 14-94	Pulley, Idler, Flat
5	532 00 49-39	Retainer Spring	38	532 13 75-54	Keeper, Belt, Idler
6	532 13 08-32	Arm, Suspension, Rear (Sway Bar)	39	532 14 49-17	Pulley, Idler, Driven
8	532 85 08-57	Bolt, Patched 3/8-24 x 1-1/4 Gr. 8	40	532 13 72-73	Spring, Secondary 44/46/50 Vent
9	810 03 06-00	Washer Lock Hvy., Unplated 3/8	41	817 49 06-20	Screw, Thdroll 3/8-16 x 1-1/4 Tytt
10	532 14 02-96	Washer Hard Blade, Mower Vented	42	532 12 20-52	Spacer, Retainer
11	531 00 50-82	Blade, 46" Mower Deck	43	532 14 49-49	Arm, Idler Secondary
12	532 12 98-95	Bearing, Ball, Mandrel #6204	44	532 13 39-43	Washer, Hardened
13	532 13 75-53	Shaft Asm.w/Lower Bearing (Includes Key No. 12)	45	532 14 50-59	Cover, Mandrel Deck
14	532 13 71-52	Housing, Mandrel	46	532 13 77-29	Screw. Thdroll. 1/4-20 x 5/8
15	532 11 04-85	Bearing, Ball, Mandrel	47	531 00 50-83	V-Belt Mower, Secondary
16	532 14 03-29	Stripper, Mower Round	48	531 00 50-84	V-Belt Mower, Primary
18	872 14 05-05	Bolt, Carriage 5/16-18 x 5/8	49	873 68 06-00	Nut, Crownlock 3/8 16 UNC
19	532 13 28-27	Bolt, Hex Head, Sholder 5/16-18	50	872 1	Bolt, Carriage 3/8-16 x 1-1/2 Gr. 5
20	532 14 50-55	Baffle Vortex Mower 46"	90	874 76 06-16	Bolt, Fin Hex 3/8-16 Unc x 1
21	873 68 05-00	Nut, Crownlock 5/16-18 UNC	91	532 13 22-74	Bracket, Asm. Noseroller Lh
22	532 13 47-53	Stiffener, Bracket	92	873 80 06-00	Nut, Lock Hex w/Ins. 3/8-16 Unc
23	532 13 12-67	Bracket, Deflector	93	819 17 14-16	Washer 17/32 x 7/8 x 16
24	532 10 53-04	Cap, Sleeve	94	532 13 22-64	Roller, Nose
25	532 14 92-87	Spring, Torsion, Deflector	95	532 13 22-73	Bracket, Asm. Noseroller Rh
26	532 11 04-52	Nut, Push	116	532 13 76-44	Bolt, Shoulder
27	532 14 53-25	Shield, Deflector Mower	117	532 13 39-57	Gaugs Wheel, Wide
28	819 11 10-16	Washer 11/32 x 5/8 x 16 Ga.	118	873 93 06-00	Nut, Centerlock 3/8-16 UNC
29	532 13 14-91	Rod, Hinge	119	819 12 14-14	Washer 3/8 x 7/8 x 14 Ga.
30	532 13 87-76	Screw, Hex Head,Thdroll	126	532 14 49-48	Arm, Idler, Primary Deck 46"
31	532 12 99-63	Washer, Spacer Mower Vented	127	532 14 67-63	Pulley, Idler, V-Groove Dim. 4.25
32	532 12 92-07	Pulley, Mandrel			
33	532 13 72-66	Nut, Flg. Top Lock Cntr. 9/16			
34	532 14 49-45	Anchor, Spring Deck 46"			
35	874 78 36-28	Screw, Thdroll 3/8-16 x 1-3/4 Tytt			

Note: All component dimensions given in U.S. inches
1 inch = 25.4 mm



KEY NO.	PART NO.	DESCRIPTION
1	532 13 69-73	Wire Asm Inner W/plunger 17.32
2	532 14 51-17	Shaft Asm Lft RH
3	532 10 57-67	Pin Groove 1.500 Zinc
4	812 00 00-02	E Ring # 5133-62
5	819 21 16-21	Washer 21/32 x 1 x 21 Ga.
6	532 12 01-83	Bearing Nylon Blk 629 Id
7	532 12 56-31	Grip Handle Fluted Blk
8	532 12 45-26	Button Plunger Black
10	532 12 25-12	Spring Cprsn 3 750 Oiled
11	532 13 98-65	Link Lift LH
12	532 13 98-66	Link Lift RH
13	532 12 46-70	Retainer Spring
15	532 12 72-18	Link Front
16	873 35 08-00	Nut Jam Hex 1/2-13 Unc
17	532 13 01-71	Trunnion Blk Zinc
18	873 80 08-00	Nut Lock W/wsh 1/2-13unc
19	532 13 98-68	Arm, Suspension Rear
20	532 12 46-60	Retainer Spring
21	819 15 12-16	Washer 15/32 X 3/4 X 16 Ga
22	812 00 00-37	Ring Klip # t5304-37
23	532 11 08-07	Nut Special
24	819 13 10-16	Washer 13/32 X 5/8 X 16 Ga
25	532 12 48-74	Spring
26	876 02 03-08	Pin Cotter 3/32 X 1/2
27	532 12 69-71	Rod Adj Lift Zinc 7.49 Wrk Lg
28	873 35 06-00	Nut Hex Jam 3/8-16 Unc
29	532 13 80-57	Knob Inf 3/8-16 Unc Blk W/sym
30	532 11 08-10	Trunnion Dp Stop Dbl Thds PLT
31	532 14 03-02	Bearing pvt. Lift Sphencal
32	873 54 06-00	Nut Crownlock 3/8-24
33	532 14 01-68	Bracket Stop Inf HGT
34	817 49 06-08	Screw Thdrol 3/8-16 x 1/2 TY-TT
35	532 12 05-29	Washer Nylon .44 x .75 x .032
36	532 13 83-46	Pointer Pnt. Height Ind. 505
37	532 12 39-35	Plug Hole Blk 1.485/1.515 Dia.
38	817 49 05-12	Screw Thdrol 5/16-18 x 3/4 Tyt
40	819 11 24-10	Washer 11/32 x 1-1/2 10 Ga
41	532 12 39-34	Scale Ind. Height Blk

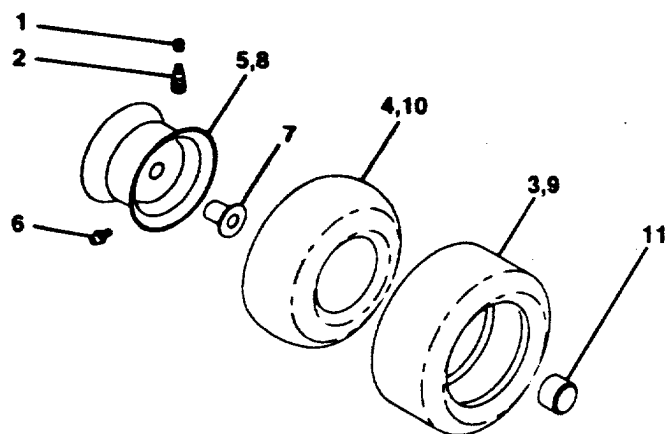
NOTE: All component dimensions given in U.S. inches
1 inch = 25.4 mm



KEY NO.	PART NO.	DESCRIPTION
1	532 14 61-39	Battery 12 Volt 25 Amp
2	874 76 04-12	Bolt Hex Hd 1/4-20unc X 3/4
3	819 09 10-16	Washer 9/32 X 5/8 X 16 Ga
4	810 04 04-00	Washer Lock Hvy Helical 1/4
6	873 22 04-00	Nut Fin Hex 1/4-20 Unc
7	532 10 92-38	Tube Plastic 12"
8	532 14 49-40	Case Battry w/2 Holes W Btry
9	532 10 95-96	Clamp Hose Olive
15	532 14 76-88	Fastener, Snap-In
19	810 09 04-00	Washer Lock 1/4
20	873 35 04-00	Nut Jam Hex 1/4-20 Unc
21	532 13 68-50	Hamess Socket Light W/4152J
22	532 00 41-52	Bulb, Light # 1156
24	532 12 47-80	Cable Battery 6ga 11" Red
25	532 14 61-47	Cable Battery 6ga 44" Red w/16W
26	532 10 88-24	Fuse 30 Amp Auto Green
28	532 12 47-73	Cable Ground 6ga 12" Black
29	532 12 13-05	Switch Plunger Nc Gray
30	532 14 03-01	Switch Ign 4 pos w/Lights
31	532 12 42-11	Nut Ignition
32	532 14 12-26	Cover Sw Key
33	532 12 21-47	Key Ign Molded Generic
35	532 10 82-36	Bracket, Switch
36	817 02 10-08	Screw Hex Tappinng # 10-24 X 1/2
38	532 14 03-36	Bracket Switch Interlock 94
39	532 10 95-53	Switch Interlock Clutch
40	532 15 12-15	Hamess, Ignition LT P/L Elect HM
41	874 78 04-08	Bolt BLK Fin Hex 1/4-20 UNC x 1/2
42	532 13 15-63	Cover Terminal Red
43	532 14 56-73	Solenoid
44	873 22 04-00	Nut, Keps Blk Hex 1/4-20 UNC
45	532 12 14-33	Ammeter Rectangular
46	532 11 09-40	Meter, Hour
47	874 14 10-08	Screw, 10-24 x 1/2
50	532 14 04-04	Switch PTO
70	532 14 11-64	Hamess Engine
80	532 14 66-85	Hamess, Clutch EVX

NOTE: All component dimensions given in U.S. inches.
1 inch = 25.4 mm

WHEELS & TIRES



KEY NO.	PART NO.	DESCRIPTION
1	532 05 91-92	Cap Valve Tire
2	532 06 51-39	Stem Valve
3	532 10 62-22	Tire F Ts 15 X 6 0 - 6 Service
4	532 05 99-04	Tube Front (Service Item Only)
5	532 13 83-36	Rim Asm Front 6" Silver
6	532 12 49-57	Fitting Grease (Front Wheel Only)
7	532 12 49-59	Bearing Flange (Front Wheel Only)
8	532 13 83-37	Rim Asm 8" rear Silver Service
9	532 12 20-82	Tire R.TS 20 x 10-8 C Service
10	532 00 71-52	Tube Rear (Service Item Only)
11	532 10 47-57	Cap Hub Axle

NOTE: All component dimensions given in U.S. inches
1 inch = 25.4 mm