

# Classic II



**1.1994-B**

**Spare parts**

**Ersatzteile**

**Pièces détachées**

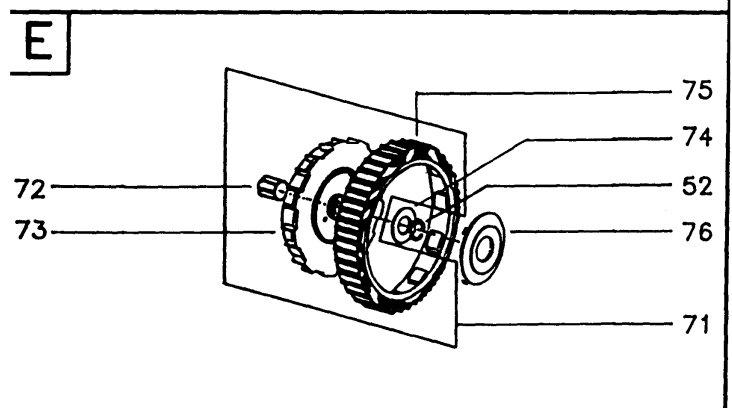
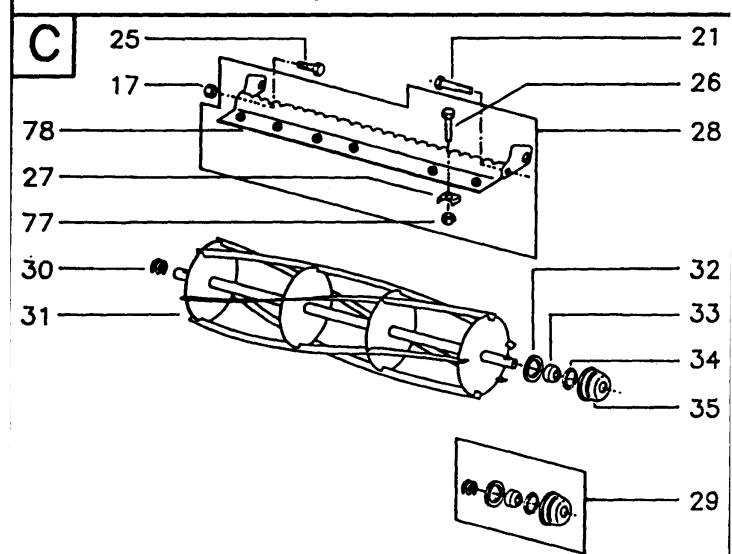
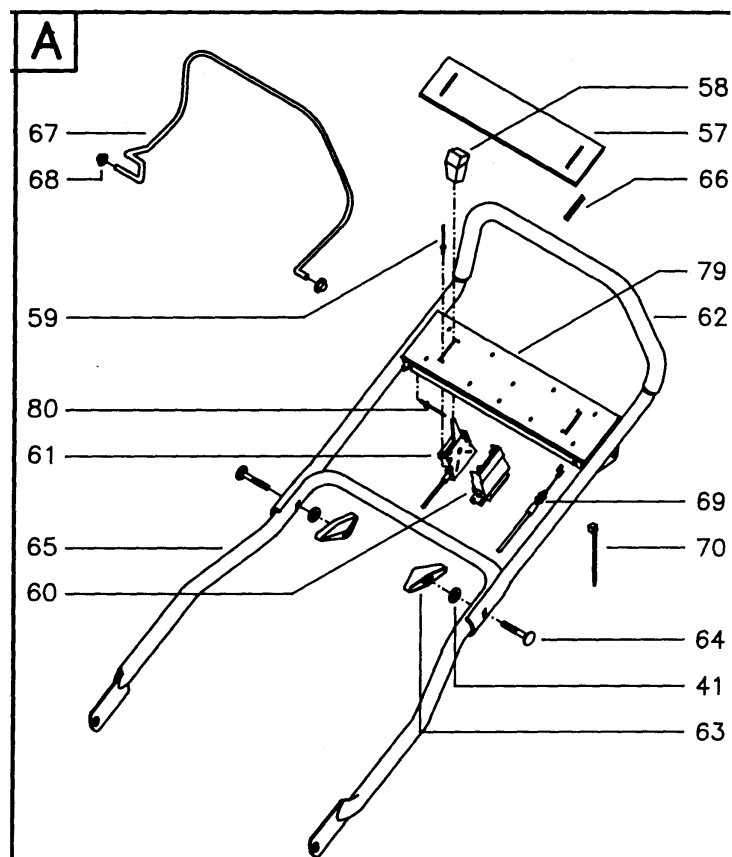
**Reserve onderdelen**

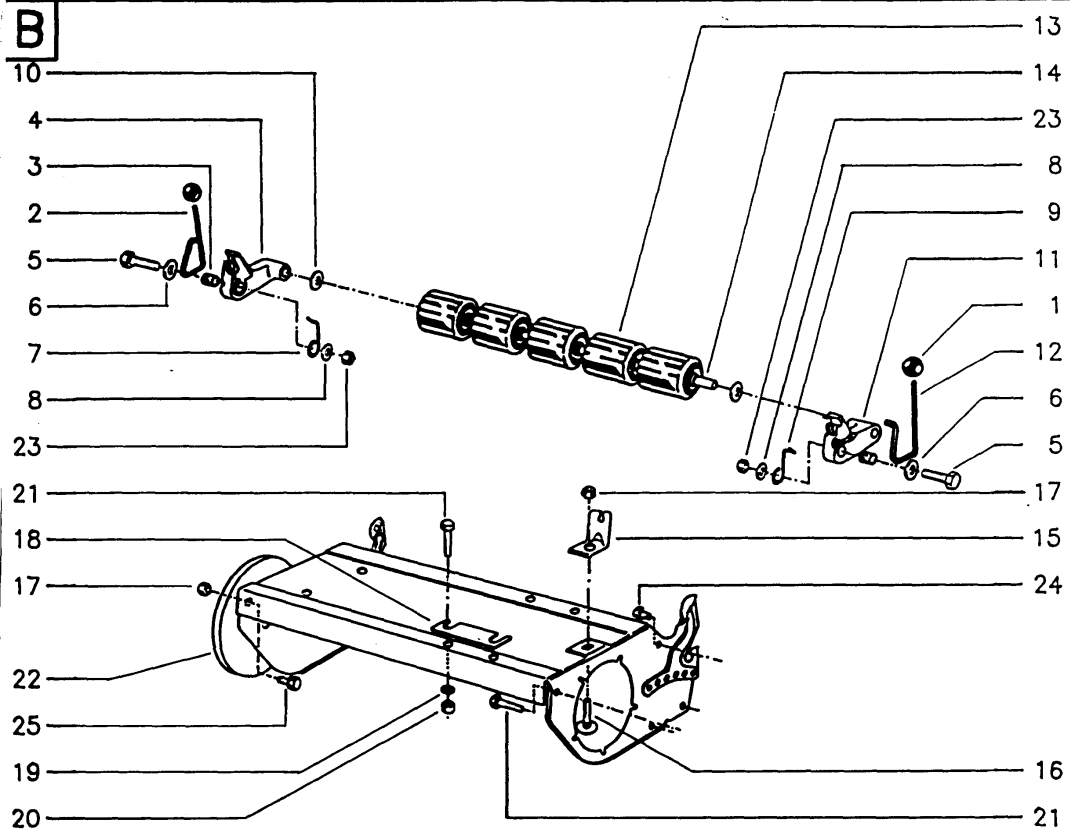
**Repuestos**

**Reservdelar**

# Motor Br. & Str. 90112 Produkt Classic II

Pos	Ruta	Ref. nr.	Pos	Ruta	Ref. nr.
1	B	516 83 47-07	46	D	516 92 16-00
2	B	516 42 06-01	47	D	728 84 45-01
3	B	515 10 5-55	48	D	516 43 00-00
4	B	515 10 45-29	49	D	516 92 82-00
5	B	725 24 9-51	50	D	515 21 35-66
6	B	734 11 73-41	51	D	515 76 41-08
7	B	515 11 83-79	52	D,E	515 11 60-21
8	B	515 14 80-05	53	D	516 61 30-01
9	B	515 11 83-75	54	D	515 21 37-43
10	B	734 11 73- 01	55	D	515 21 35-67
11	B	515 10 45-30	56	D	515 79 60-29
12	B	516 42 05-01	57	A	516 85 60-88
13	B	515 10 40-78	58	A	516 86 47-15
14	B	515 10 72-41	59	A	516 92 51-00
15	B	515 13 97-83	60	A	516 83 25-00
16	B	727 64 51-01	61	A	516 82 27-12
17	B,C,D	732 21 18-31	62	A	516 62 41-25
18	B	515 13 80-30	63	A	516 87 46-07
19	B	735 11 64-01	64	A	727 64 61-01
20	B,D	731 23 18-01	65	A	516 60 88-11
21	B,C	725 24 59-51	66	A	516 83 95-11
22	B	515 21 35-68	67	A	516 62 43-07
23	B	732 21 20-01	68	A	516 91 13-00
24	B	725 24 49-51	69	A	516 82 78-02
25	B,C	725 24 47-51	70	A	516 84 45-09
26	C	725 24 57-51	71	E	515 20 25-77
27	C	515 13 83-96	72	E	515 10 80-24
28	C	516 78 23-11	73	E	515 13 10-69
29	C	515 30 02-91	74	E	515 79 60-33
30	C	515 11 84-37	75	E	515 13 30-33
31	C	515 21 36-38	76	E	515 13 98-19
32	C	515 11 50-95	77	C	732 21 18-01
33	C	515 10 90-82	78	C	516 69 20-11
34	C	515 10 90-25	79	A	516 62 97-11
35	C	515 13 97-04	80	A	516 90 48-00
36	D	516 92 15-00	81	D	734 11 63-01
37	D	515 11 70-10			
38	D	735 21 64-50			
39	D	515 79 30-17			
40	D	725 24 55-71			
41	A	515 79 60-09			
42	D	515 13 97-05			
43	D	516 60 97-01			
44	D	516 61 28-00			
45	D	515 10 45-12			



**B****D**