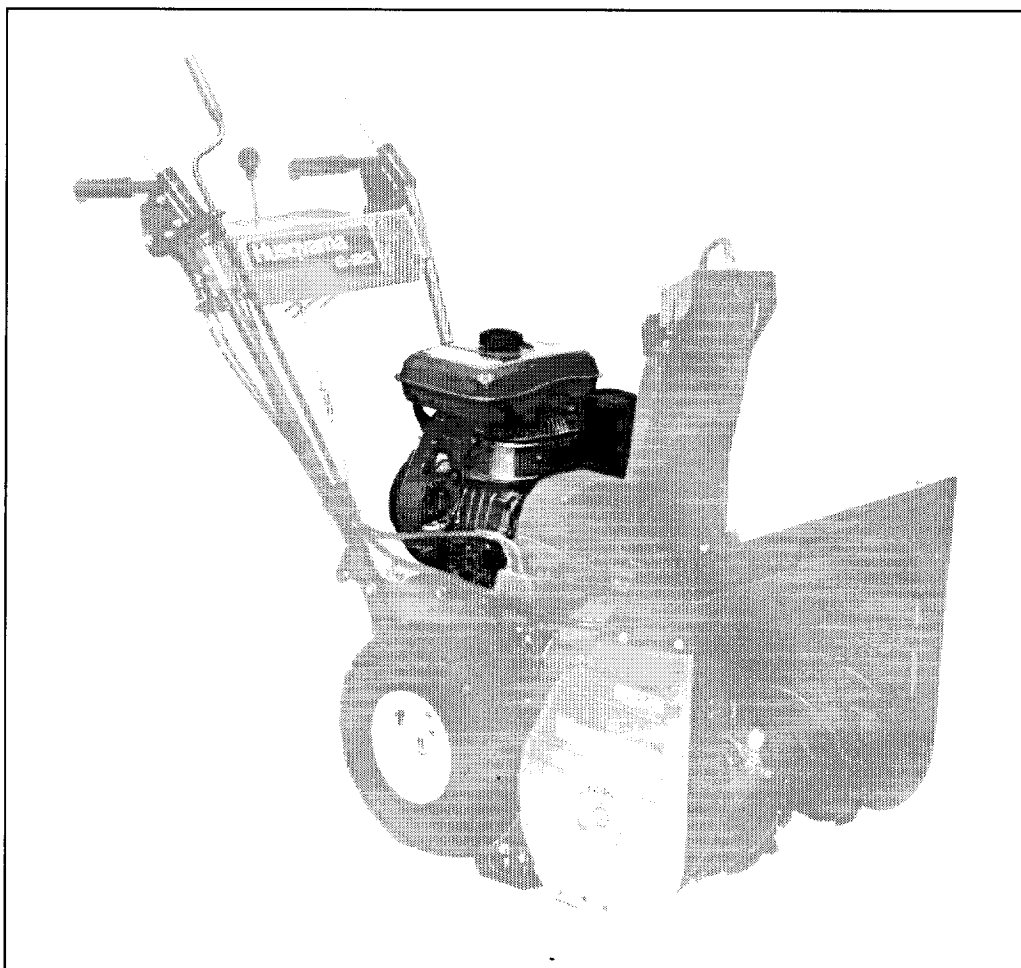
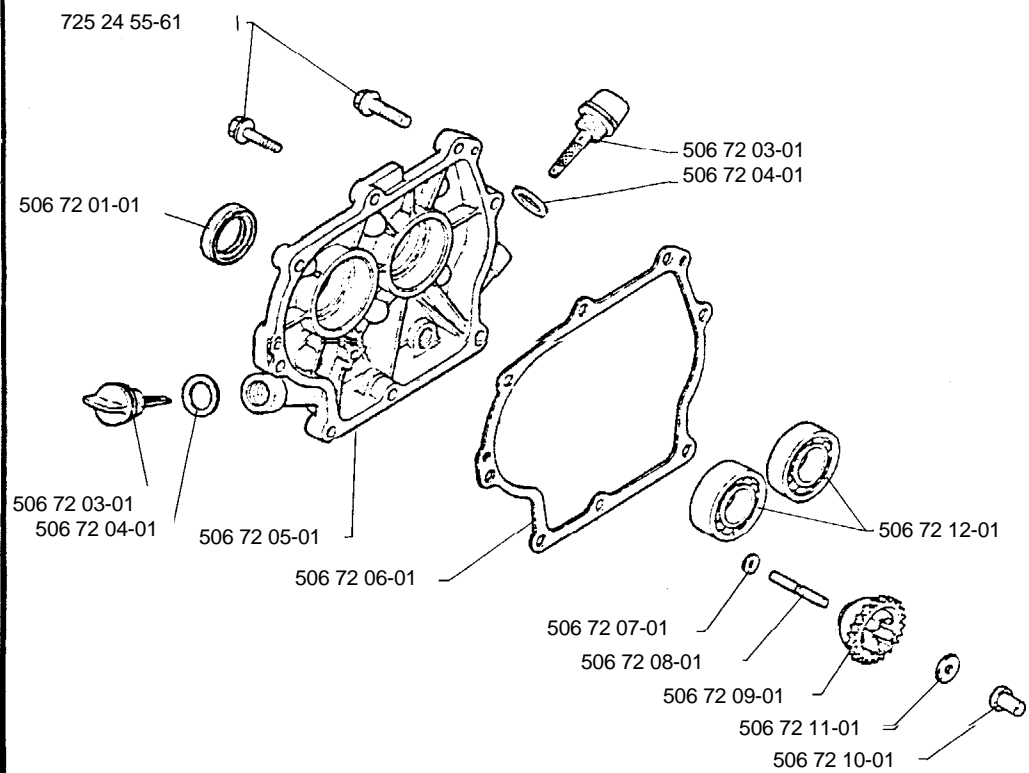


6-23

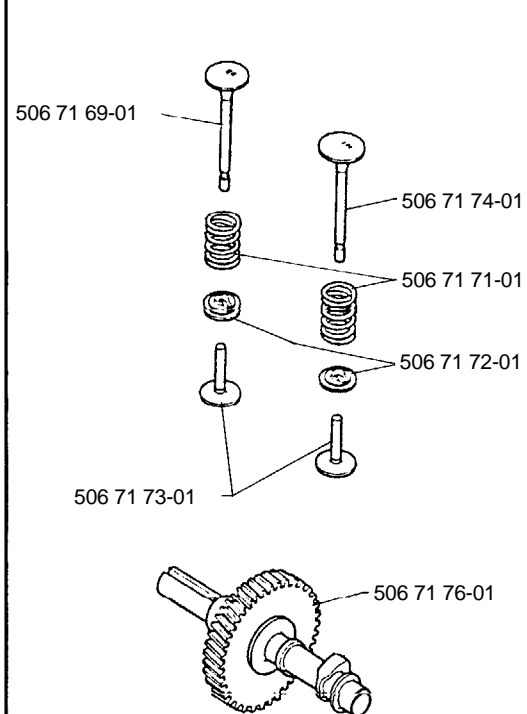


1.1992
Engine
Motor
Moteur
Motore

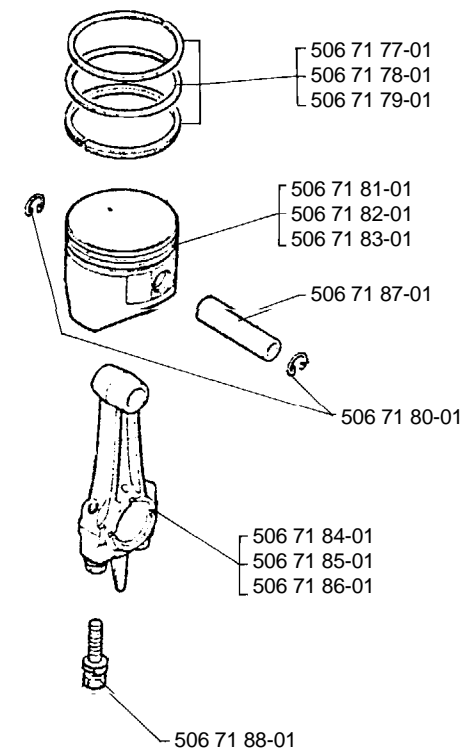
M

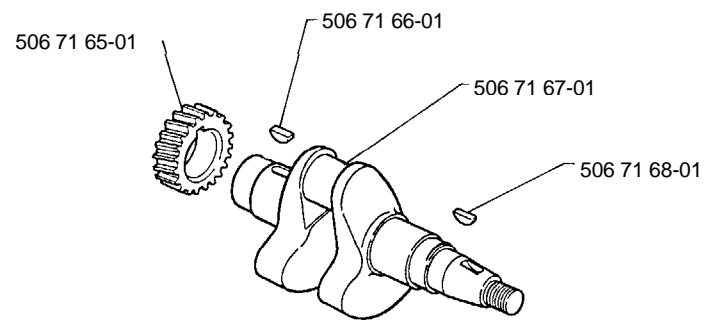
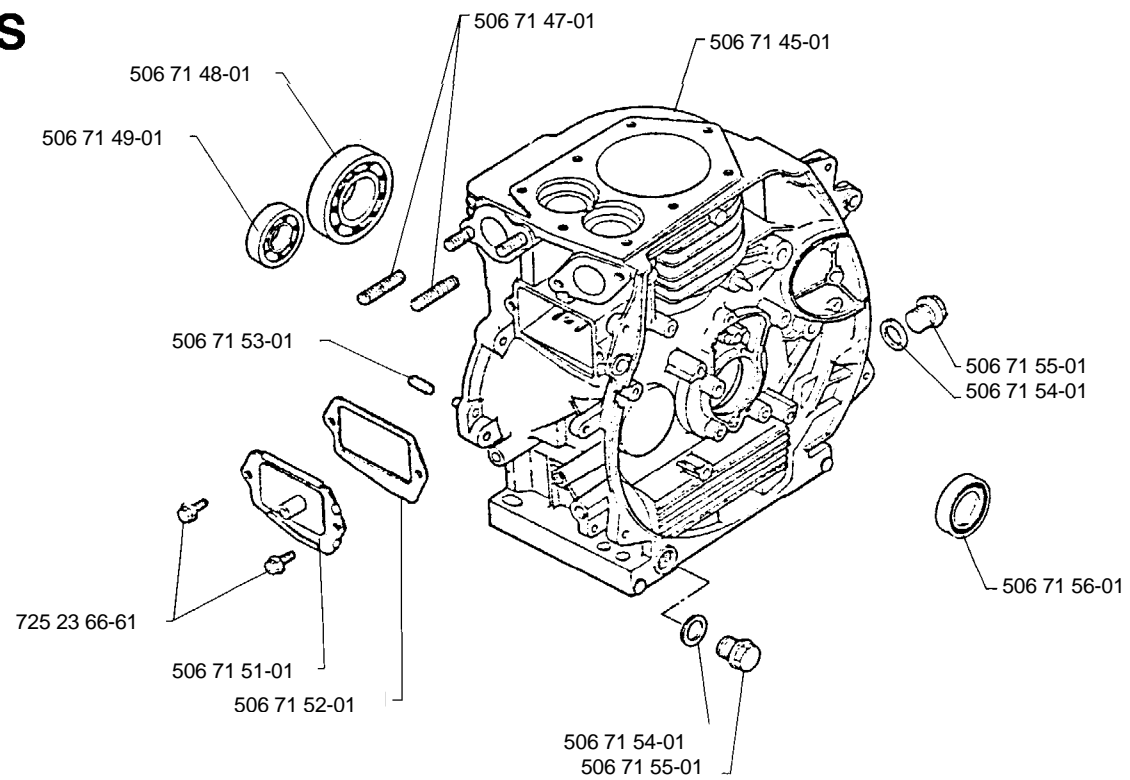


N

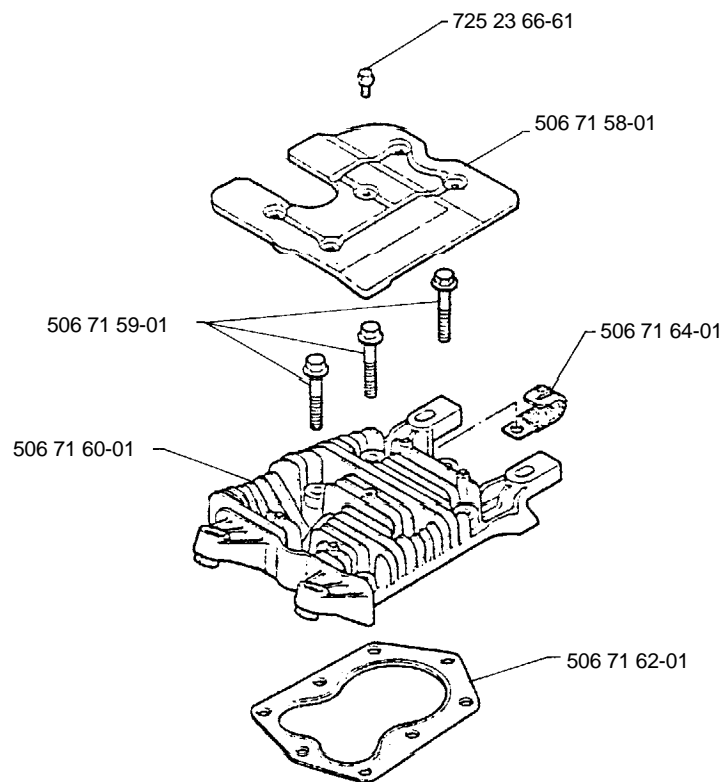


O

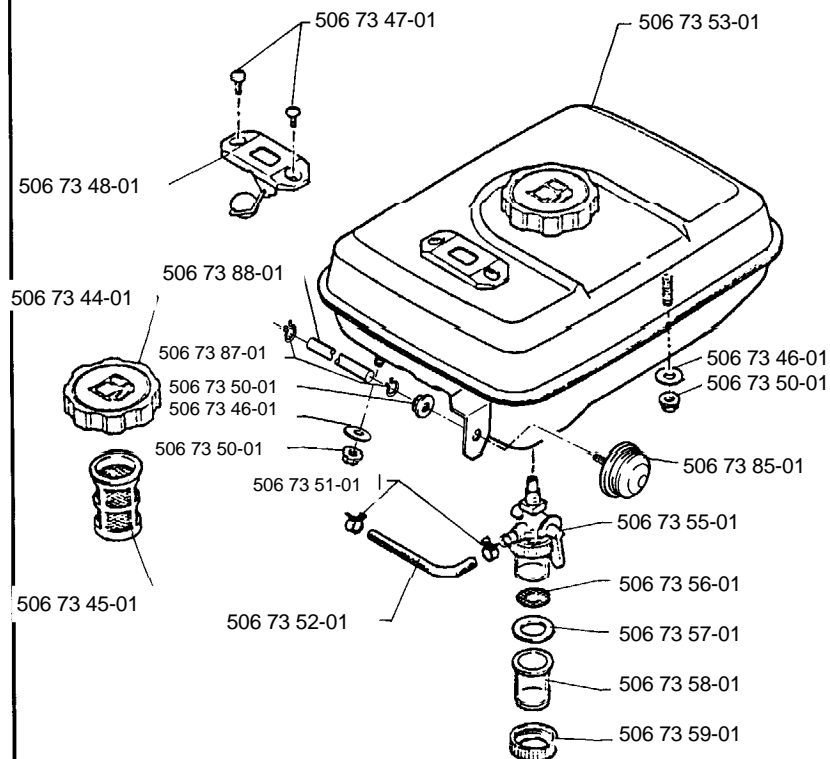


R**S**

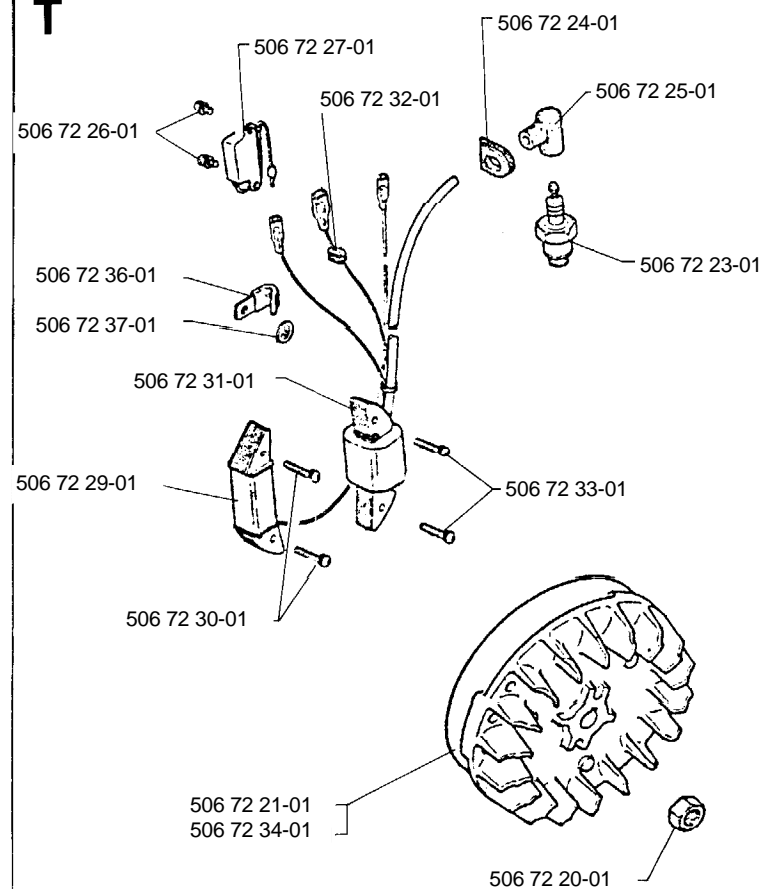
P



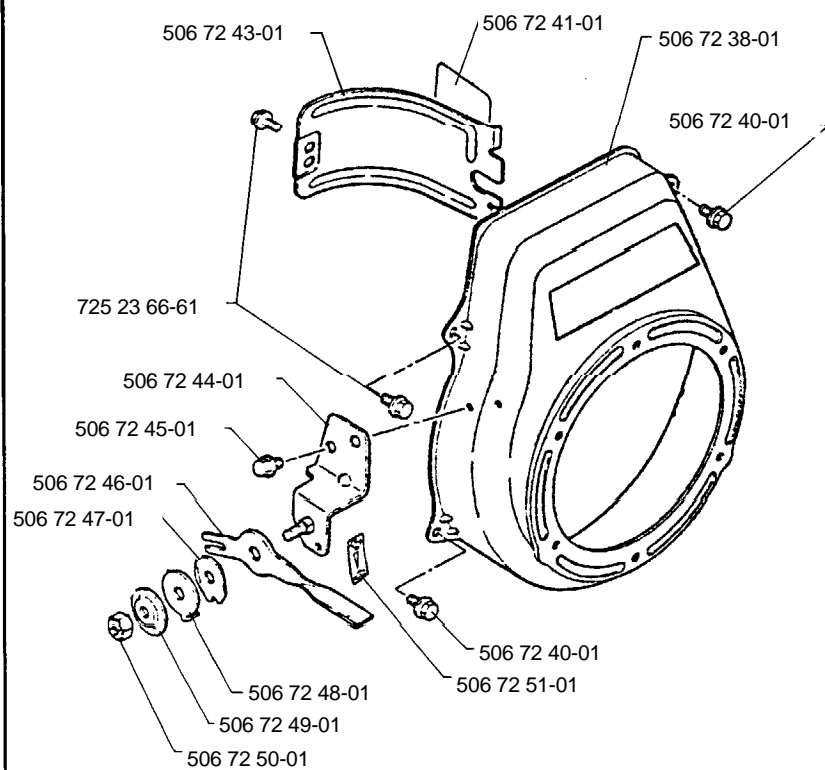
Q

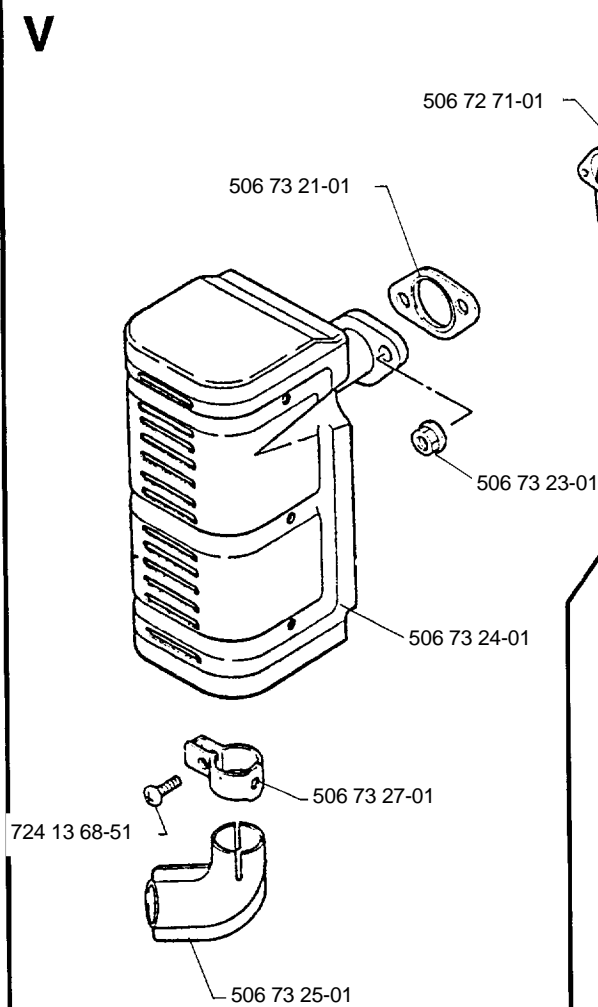
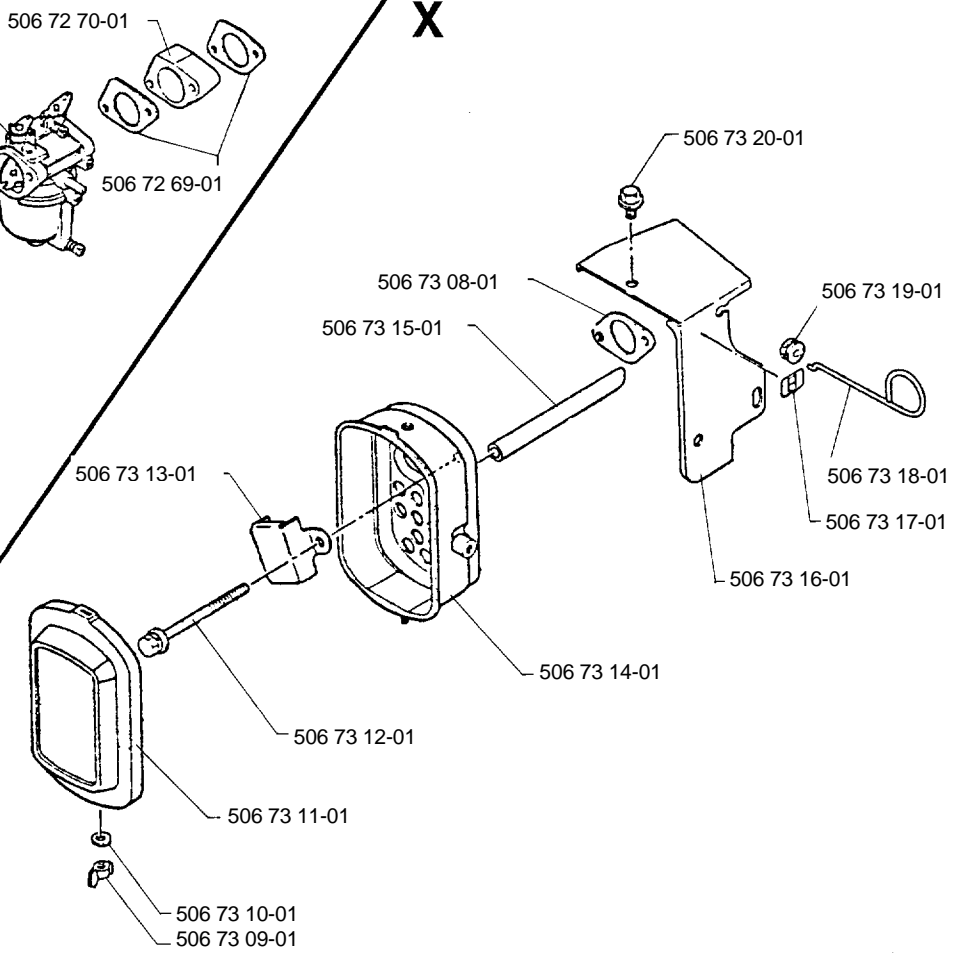
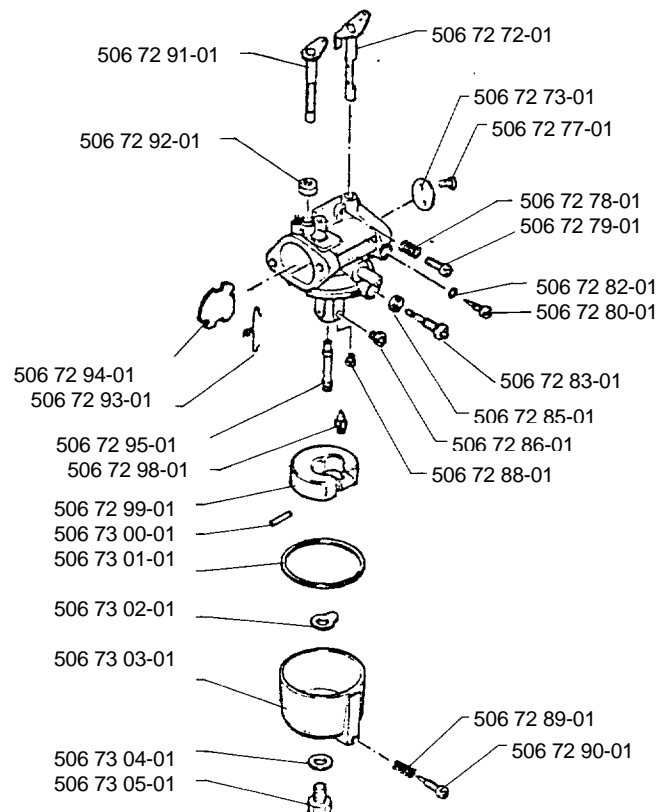


T

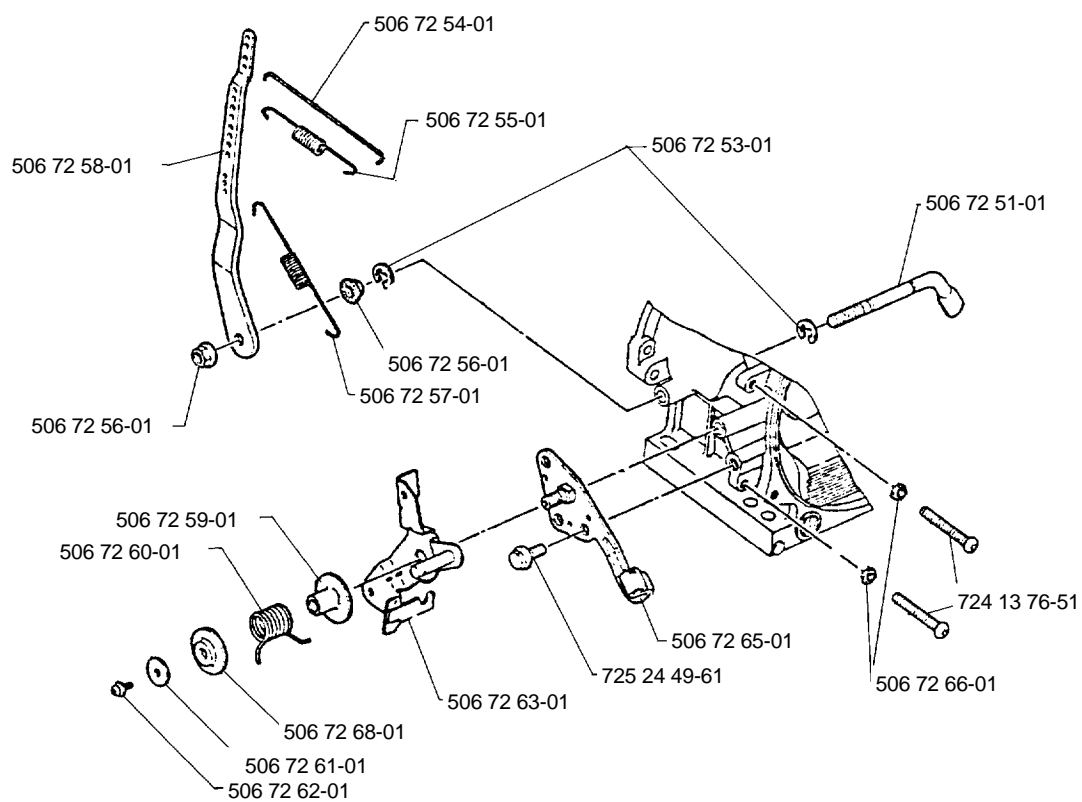


U

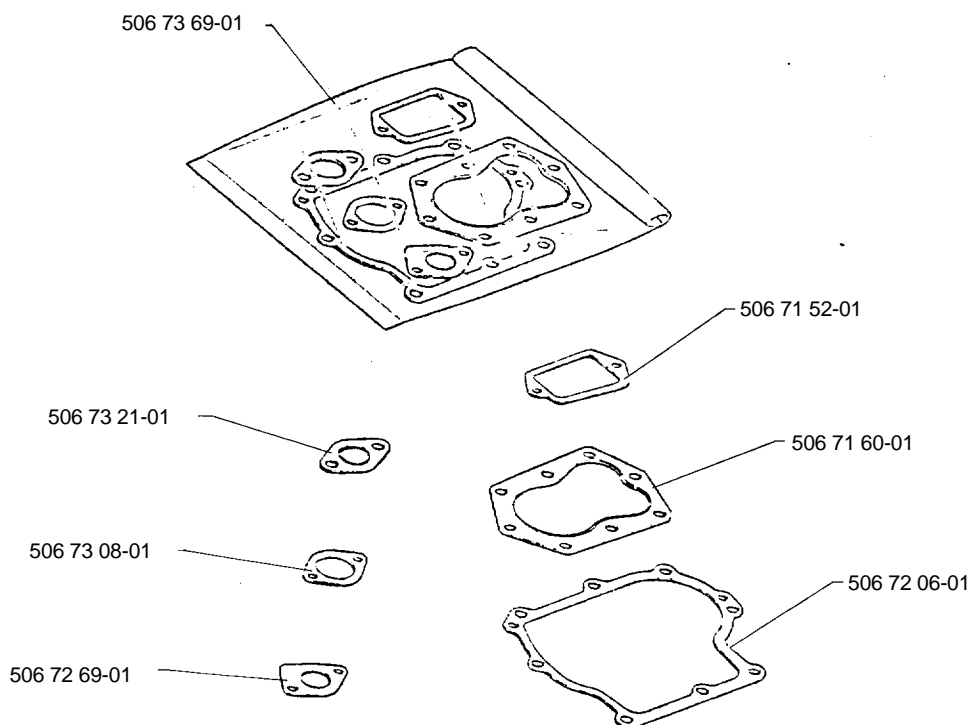


V**X****AA**

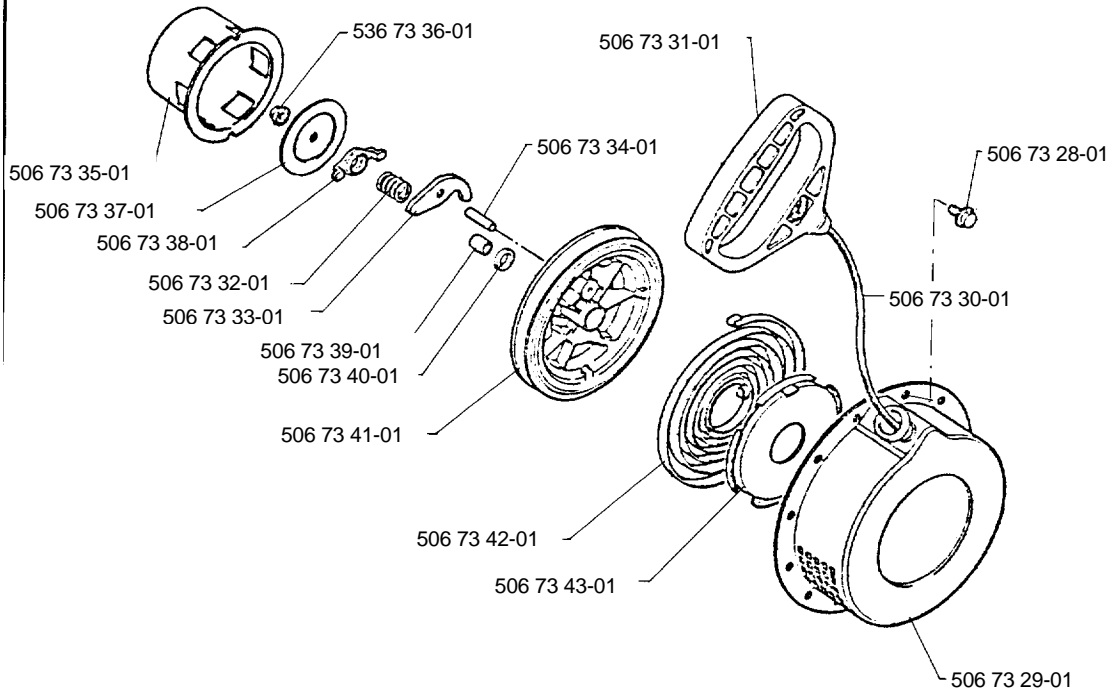
Y



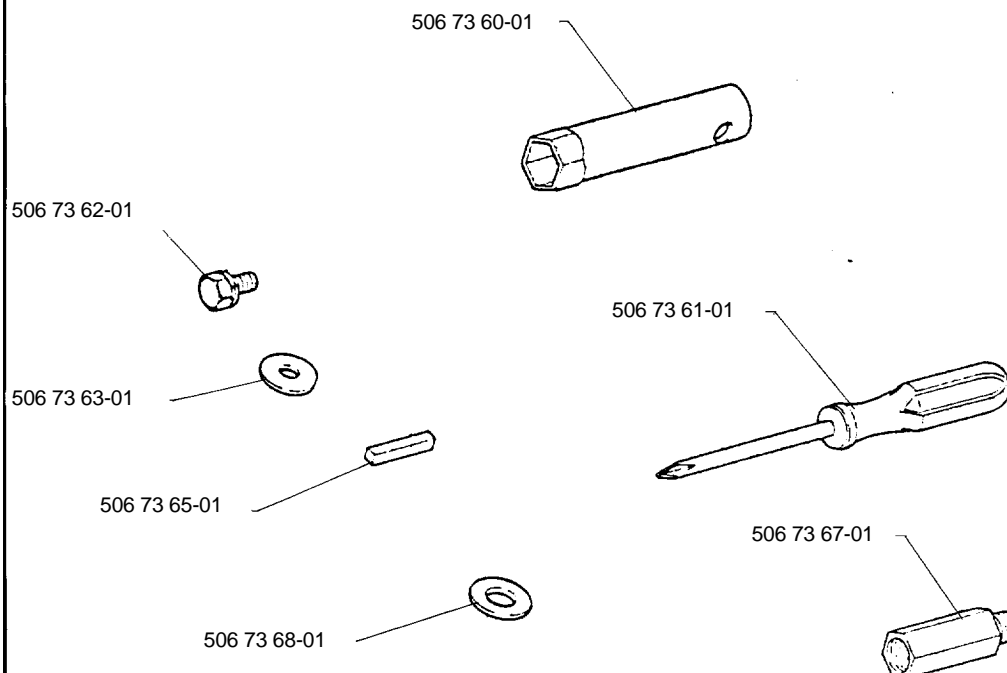
AB



Z



AC



| Ref.No. Teil-Nr N° de réf. Ref.No. N° ref. Ref. nr. | Square Viereck Carreau Vak Cuadro Ruta | Ref.No. Teil-Nr N° de réf. Ref.No. N° ref. Ref. nr. | Square Viereck Carreau Vak Cuadro Ruta | Ref.No. Teil-Nr N° de réf. Ref.No. N° ref. Ref. nr. | Square Viereck Carreau Vak Cuadro Ruta | Ref.No. Teil-Nr N° de réf. Ref.No. N° ref. Ref. nr. | Square Viereck Carreau Vak Cuadro Ruta |
|--|---|--|---|--|---|--|---|
| 506 71 45-01 | S | 506 72 10-01 | M | 506 72 70-01 | V | 506 73 27-01 | V |
| 506 71 47-01 | S | 506 72 11-01 | M | 506 72 71-01 | V | 506 73 28-01 | Z |
| 506 71 48-01 | S | 506 72 12-01 | M | 506 72 72-01 | AA | 506 73 29-01 | Z |
| 506 71 49-01 | S | 506 72 20-01 | T | 506 72 73-01 | AA | 506 73 30-01 | Z |
| 506 71 51-01 | S | 506 72 21-01 | T | 506 72 77-01 | AA | 506 73 31-01 | Z |
| 506 71 52-01 | AB,S | 506 72 23-01 | T | 506 72 78-01 | AA | 506 73 32-01 | Z |
| 506 71 53-01 | S | 506 72 24-01 | T | 506 72 79-01 | AA | 506 73 33-01 | Z |
| 506 71 54-01 | S | 506 72 25-01 | T | 506 72 80-01 | AA | 506 73 34-01 | Z |
| 506 71 55-01 | S | 506 72 26-01 | T | 506 72 82-01 | AA | 506 73 35-01 | Z |
| 506 71 56-01 | S | 506 72 27-01 | T | 506 72 83-01 | AA | 506 73 36-01 | Z |
| 506 71 58-01 | P | 506 72 29-01 | T | 506 72 85-01 | AA | 506 73 37-01 | Z |
| 506 71 59-01 | P | 506 72 30-01 | T | 506 72 86-01 | AA | 506 73 38-01 | Z |
| 506 71 60-01 | P,AB | 506 72 31-01 | T | 506 72 88-01 | AA | 506 73 39-01 | Z |
| 506 71 62-01 | P | 506 72 32-01 | T | 506 72 89-01 | AA | 506 73 40-01 | Z |
| 506 71 64-01 | P | 506 72 33-01 | T | 506 72 90-01 | AA | 506 73 41-01 | Z |
| 506 71 65-01 | R | 506 72 34-01 | T | 506 72 91-01 | AA | 506 73 42-01 | Z |
| 506 71 66-01 | R | 506 72 36-01 | T | 506 72 92-01 | AA | 506 73 43-01 | Z |
| 506 71 67-02 | R | 506 72 37-01 | T | 506 72 93-01 | AA | 506 73 44-01 | Q |
| 506 71 68-01 | R | 506 72 38-01 | U | 506 72 94-01 | AA | 506 73 45-01 | Q |
| 506 71 69-01 | N | 506 72 40-01 | U | 506 72 95-01 | AA | 506 73 46-01 | Q |
| 506 71 71-01 | N | 506 72 41-01 | U | 506 72 98-01 | AA | 506 73 47-01 | Q |
| 506 71 72-01 | N | 506 72 43-01 | U | 506 72 99-01 | AA | 506 73 48-01 | Q |
| 506 71 73-01 | N | 506 72 44-01 | U | 506 73 00-01 | AA | 506 73 50-01 | Q |
| 506 71 74-01 | N | 506 72 45-01 | U | 506 73 01-01 | AA | 506 73 51-01 | Q |
| 506 71 76-01 | N | 506 72 46-01 | U | 506 73 02-01 | AA | 506 73 52-01 | Q |
| 506 71 77-01 | O | 506 72 47-01 | U | 506 73 03-01 | AA | 506 73 53-01 | Q |
| 506 71 78-01 | O | 506 72 48-01 | U | 506 73 04-01 | AA | 506 73 55-01 | Q |
| 506 71 79-01 | O | 506 72 49-01 | U | 506 73 05-01 | AA | 506 73 56-01 | Q |
| 506 71 80-01 | O | 506 72 50-01 | U | 506 73 08-01 | AB,X | 506 73 57-01 | Q |
| 506 71 81-01 | O | 506 72 51-01 | U,Y | 506 73 09-01 | X | 506 73 58-01 | Q |
| 506 71 82-01 | O | 506 72 53-01 | Y | 506 73 10-01 | X | 506 73 59-01 | Q |
| 506 71 83-01 | O | 506 72 54-01 | Y | 506 73 11-01 | X | 506 73 62-01 | AC |
| 506 71 84-01 | O | 506 72 55-01 | Y | 506 73 12-01 | X | 506 73 63-01 | AC |
| 506 71 85-01 | O | 506 72 56-01 | Y | 506 73 13-01 | X | 506 73 65-01 | AC |
| 506 71 86-01 | O | 506 72 57-01 | Y | 506 73 14-01 | X | 506 73 67-01 | AC |
| 506 71 87-01 | O | 506 72 58-01 | Y | 506 73 15-01 | X | 506 73 68-01 | AC |
| 506 71 88-01 | O | 506 72 59-01 | Y | 506 73 16-01 | X | 506 73 69-01 | AB |
| 506 72 01-01 | M | 506 72 60-01 | Y | 506 73 17-01 | X | 506 73 85-01 | Q |
| 506 72 03-01 | M | 506 72 61-01 | Y | 506 73 18-01 | X | 506 73 87-01 | Q |
| 506 72 04-01 | M | 506 72 62-01 | Y | 506 73 19-01 | X | 506 73 88-01 | Q |
| 506 72 05-01 | M | 506 72 63-01 | Y | 506 73 20-01 | X | 724 13 68-51 | V |
| 506 72 06-01 | M,AB | 506 72 65-01 | Y | 506 73 21-01 | AB,V | 724 13 76-51 | Y |
| 506 72 07-01 | M | 506 72 66-01 | Y | 506 73 23-01 | V | 725 23 66-61 | P,S,U |
| 506 72 08-01 | M | 506 72 68-01 | Y | 506 73 24-01 | V | 725 24 49-61 | Y |
| 506 72 09-01 | M | 506 72 69-01 | V,AB | 506 73 25-01 | V | 725 24 55-61 | M |