

# Rider 650-6



**1.1992**

**Spare parts**

**Ersatzteile**

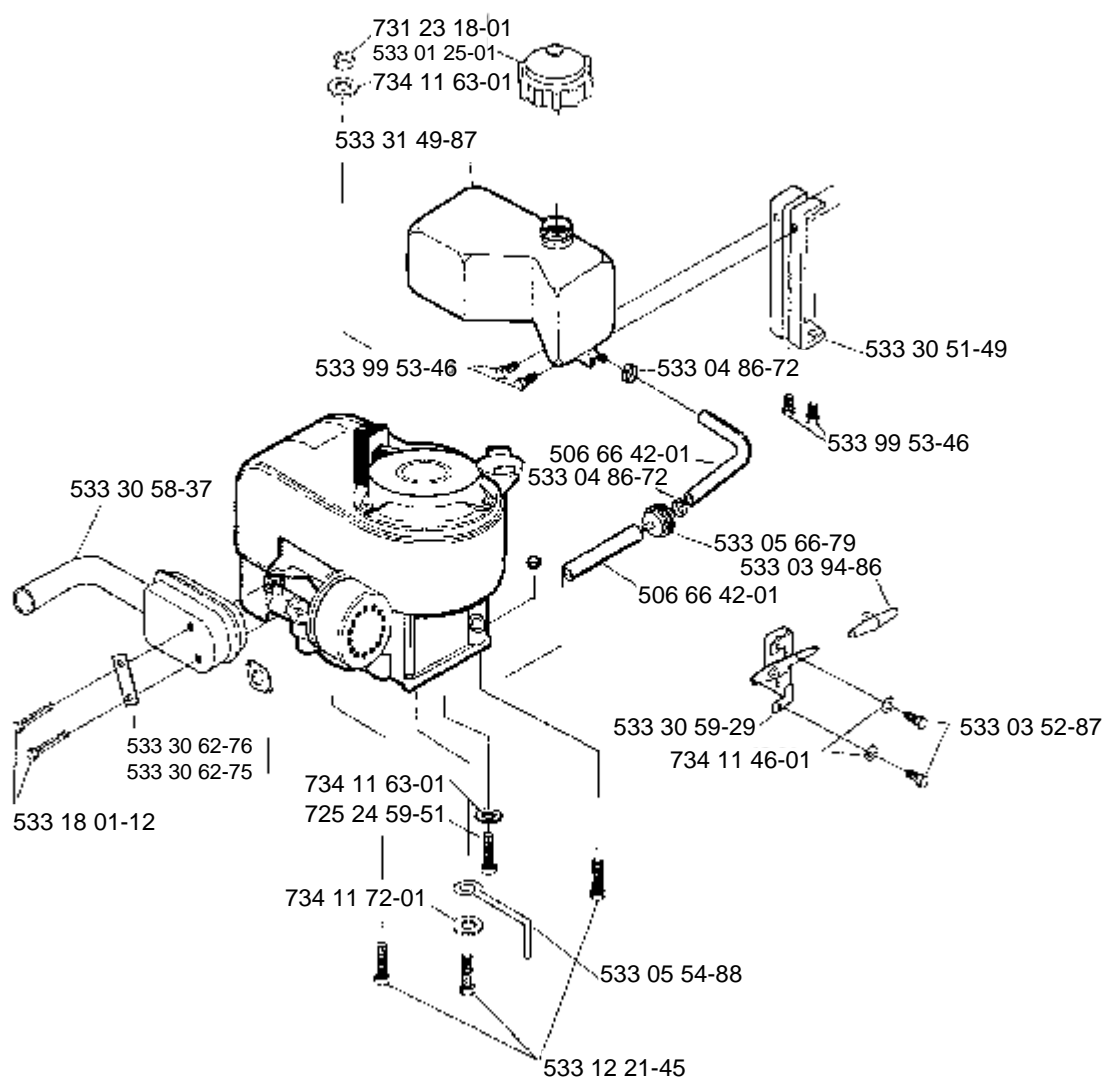
**Pièces détachées**

**Reserve onderdelen**

**Repuestos**

**Reservdelar**

# A

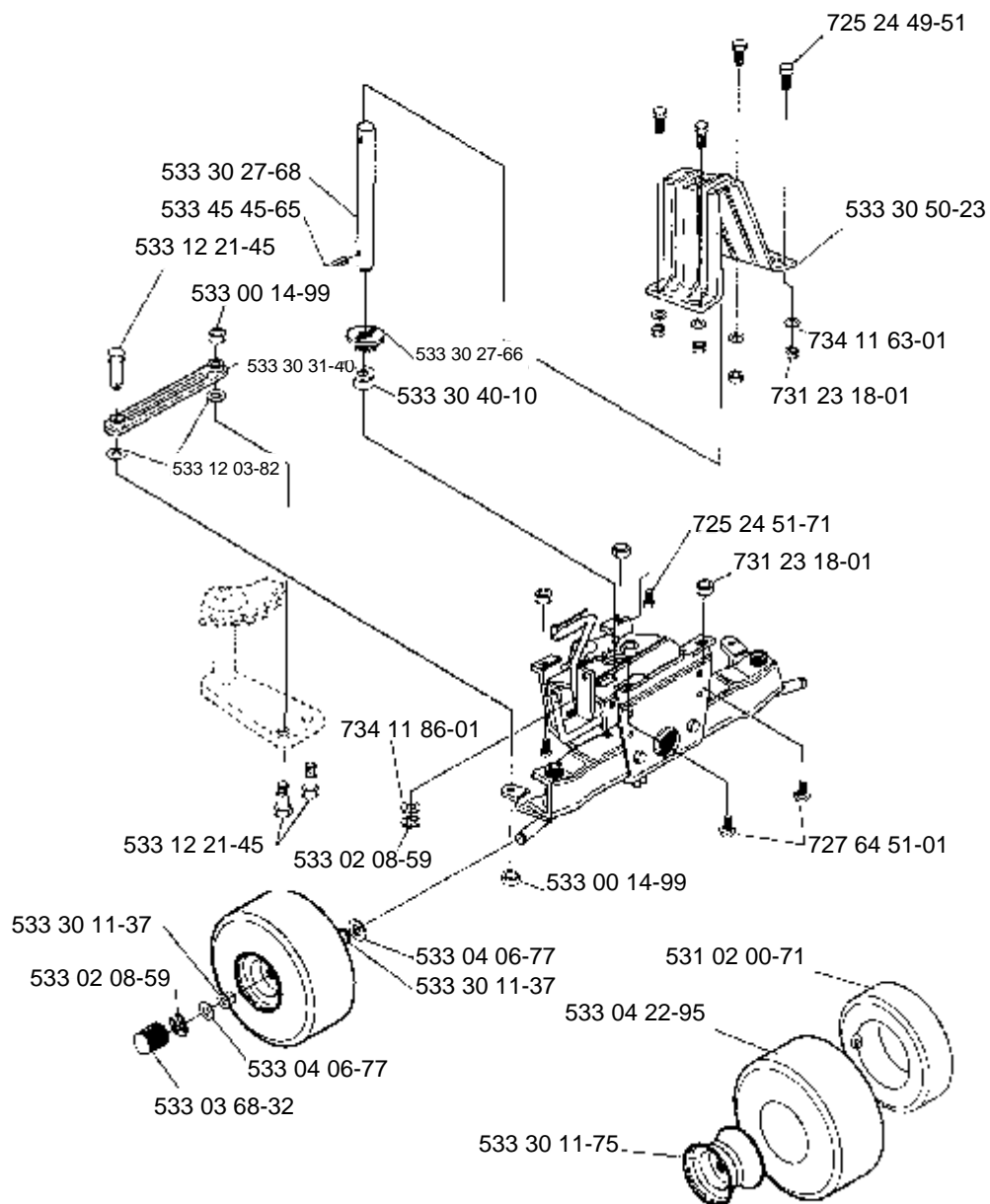


This diagram illustrates the exploded view of a mechanical assembly, likely a vehicle seat or a similar component. The parts are labeled with alphanumeric codes, and their assembly sequence is indicated by numbers in parentheses. The main components include a large rectangular frame (533 30 59-22), a central mounting bracket (533 31 35-04), a base plate (533 30 58-33), and a rear support structure (533 30 59-33). The assembly is secured with various fasteners, including screws (e.g., 725 24 49-51, 725 24 62-51) and bolts (e.g., 731 23 18-01, 731 23 20-01). The diagram shows the relative positions of these components and the specific fasteners used to join them.

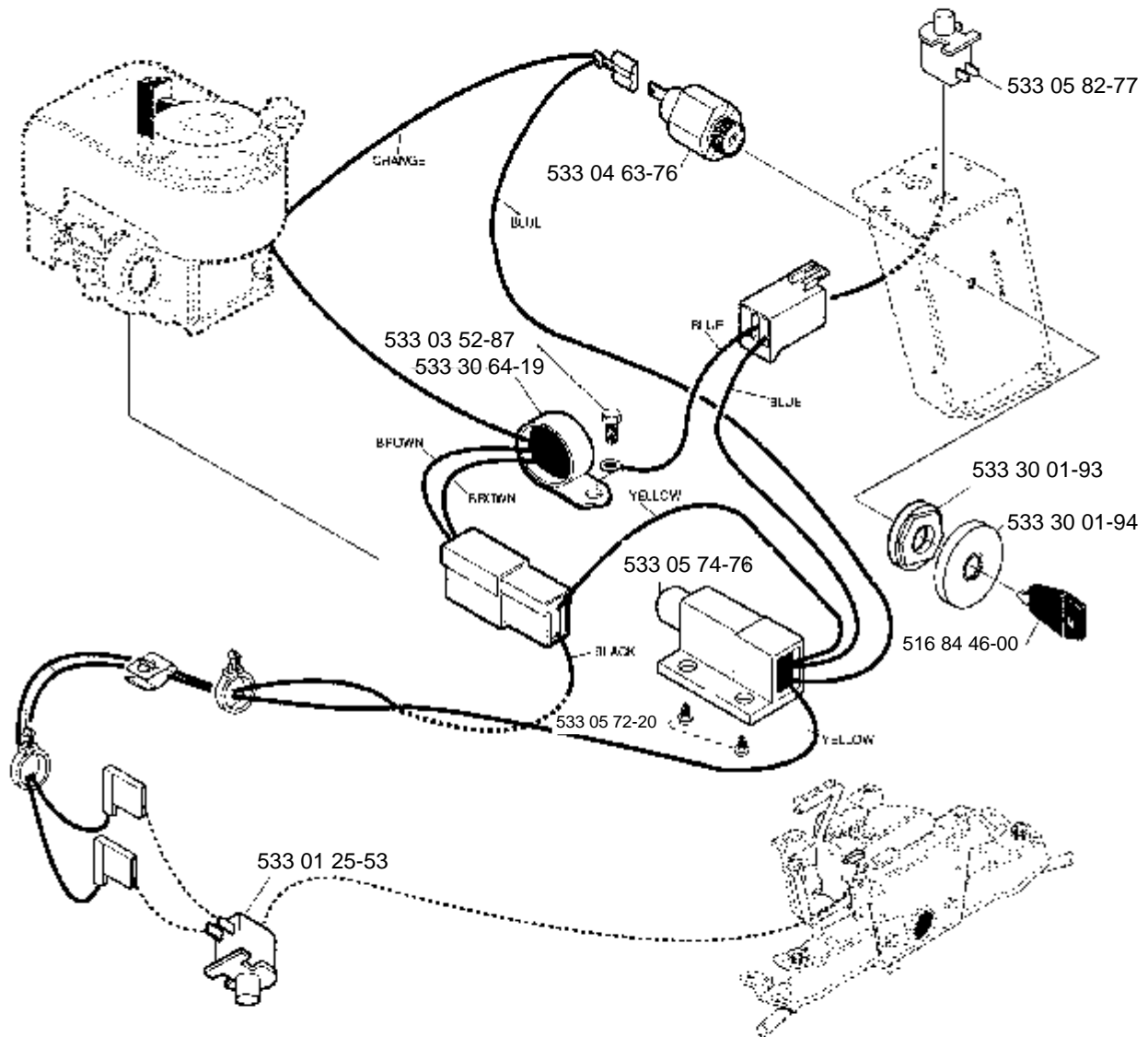
Key components and their labels include:

- 533 31 03-84 (Top cover)
- 725 23 68-71 (Fastener)
- 533 30 59-22 (Main frame)
- 725 24 49-51 (Fastener)
- 533 31 91-36 (Fastener)
- 533 31 35-04 (Central bracket)
- 533 02 05-07 (Fastener)
- 725 24 53-71 (Fastener)
- 533 05 05-20 (Fastener)
- 734 11 63-01 (Fastener)
- 735 11 64-01 (Fastener)
- 533 12 20-07 (Fastener)
- 533 30 58-33 (Base plate)
- 533 00 14-98 (Fastener)
- 725 24 49-51 (Fastener)
- 731 23 18-01 (Fastener)
- 725 24 49-51 (Fastener)
- 731 23 16-01 (Fastener)
- 731 23 18-01 (Fastener)
- 731 23 18-01 (Fastener)
- 731 23 18-01 (Fastener)
- 725 24 49-51 (Fastener)
- 533 30 59-33 (Rear support)
- 533 30 56-45 (Fastener)
- 533 03 54-98 (Fastener)
- 533 99 53-46 (Fastener)
- 731 23 18-01 (Fastener)
- 533 30 96-13 (Fastener)
- 533 99 53-46 (Fastener)
- 533 30 96-12 (Fastener)
- 533 04 98-99 (Fastener)
- 725 24 59-51 (Fastener)
- 731 23 18-01 (Fastener)
- 533 31 05-58 (Fastener)
- 533 30 92-35 (Fastener)
- 725 24 62-51 (Fastener)
- 731 23 18-01 (Fastener)

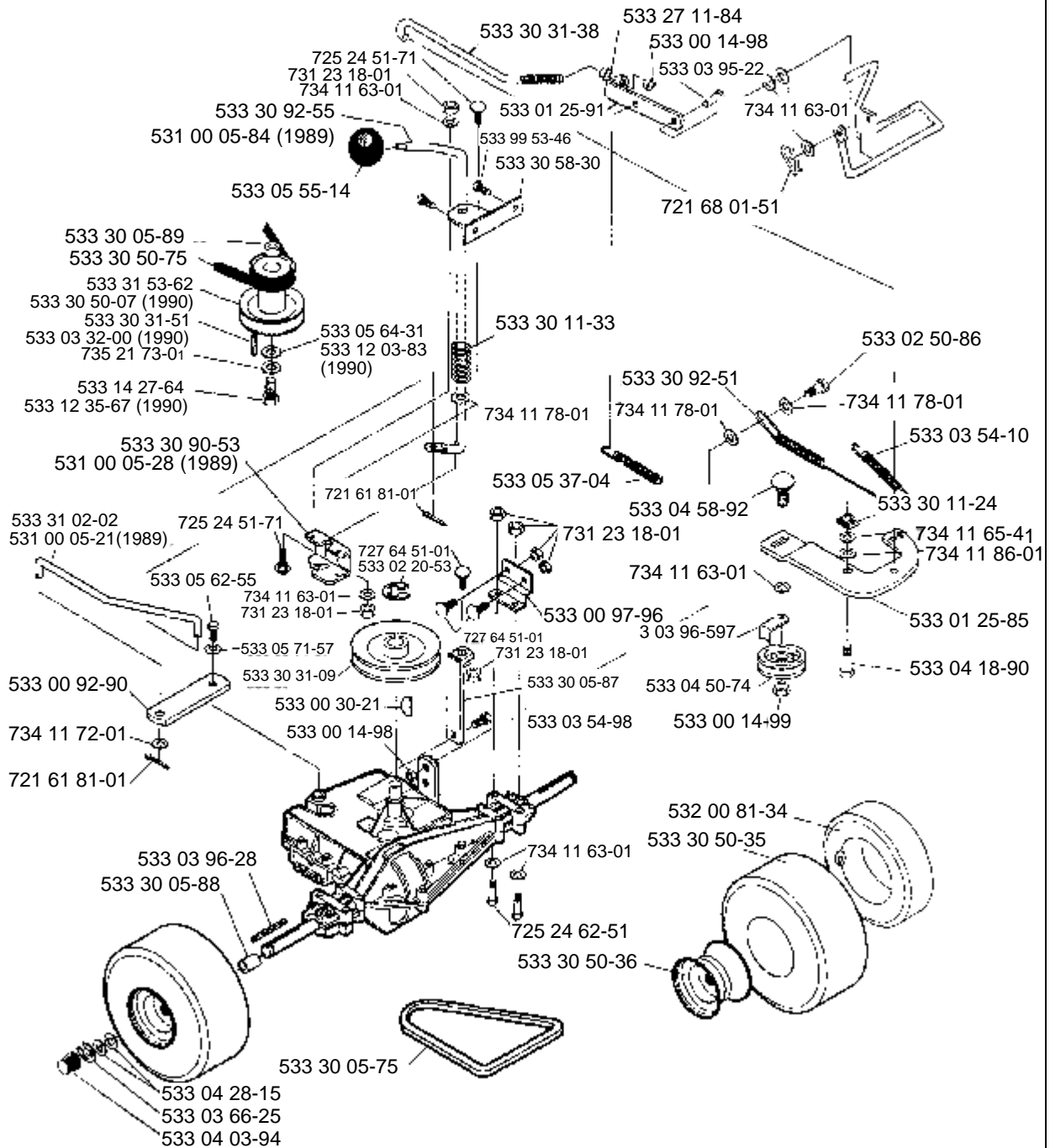
C



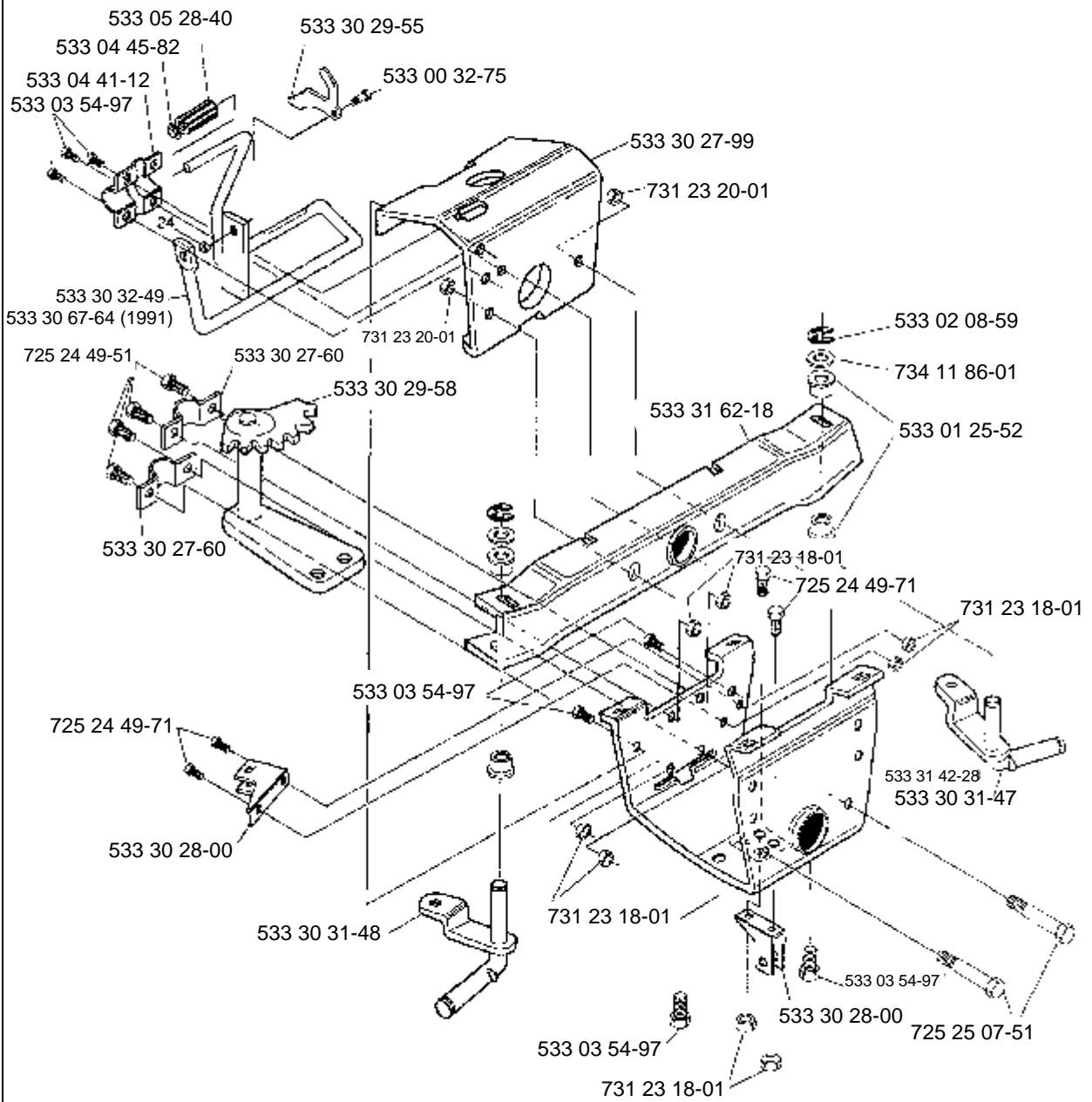
# D



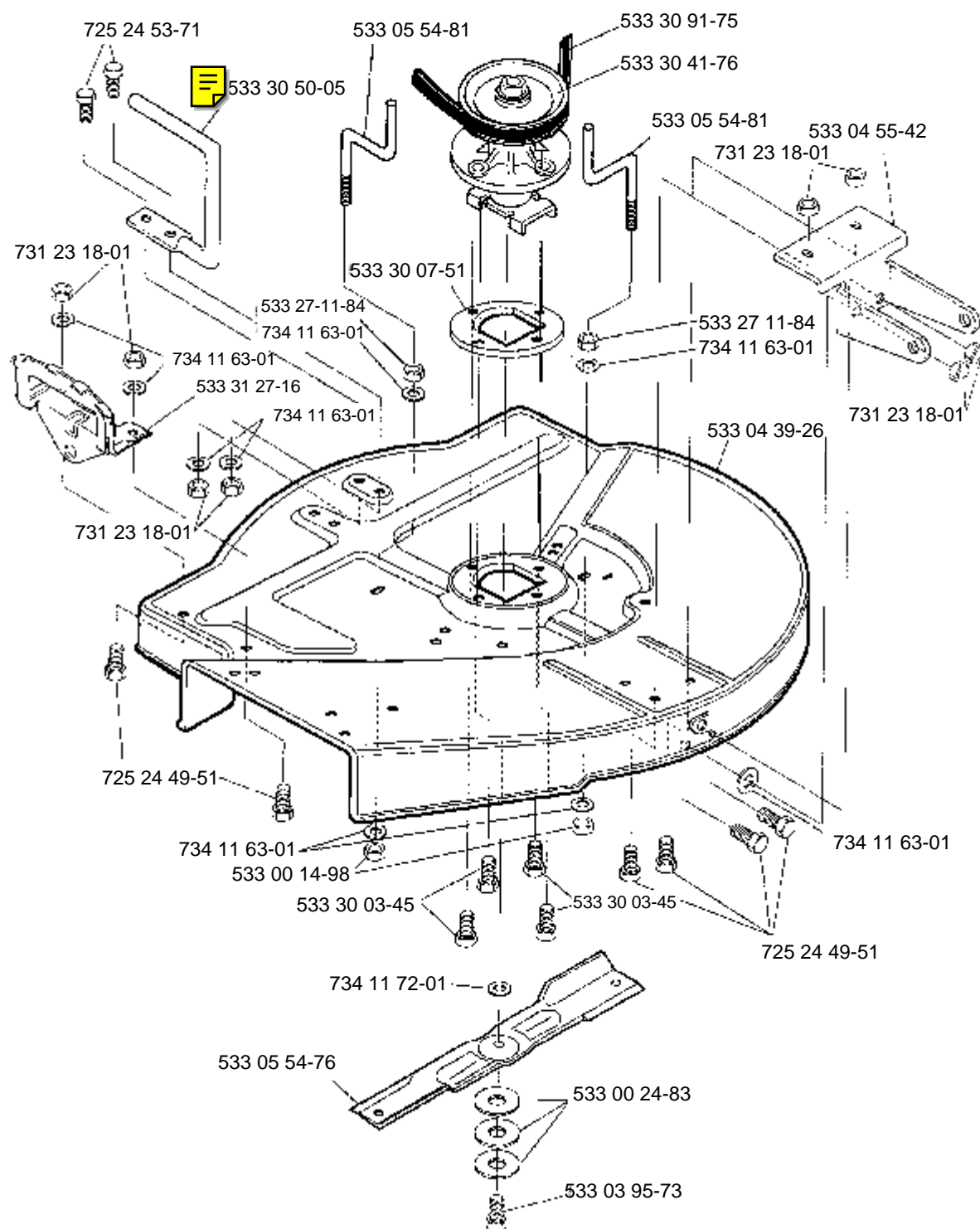
# E



# F

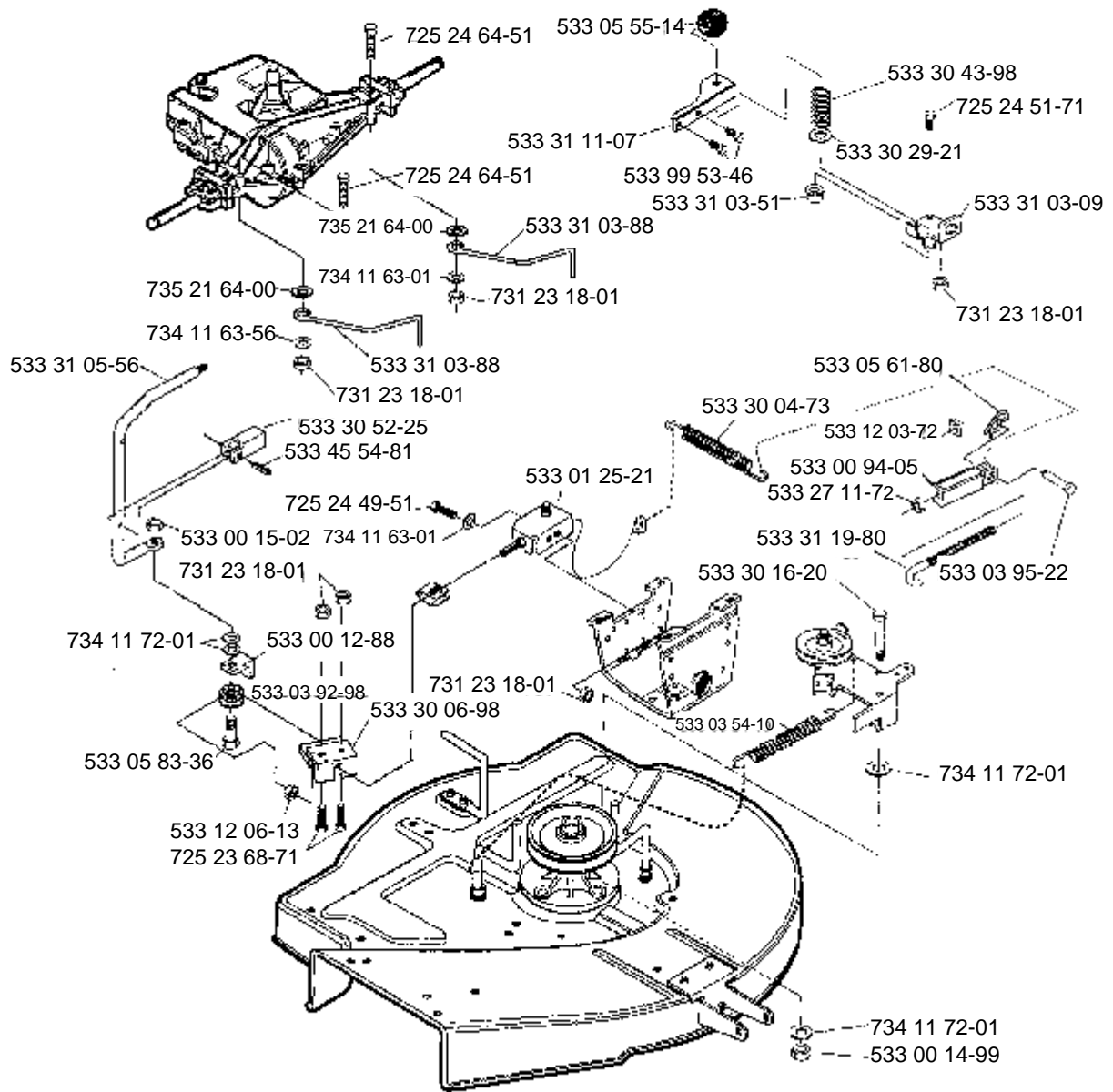


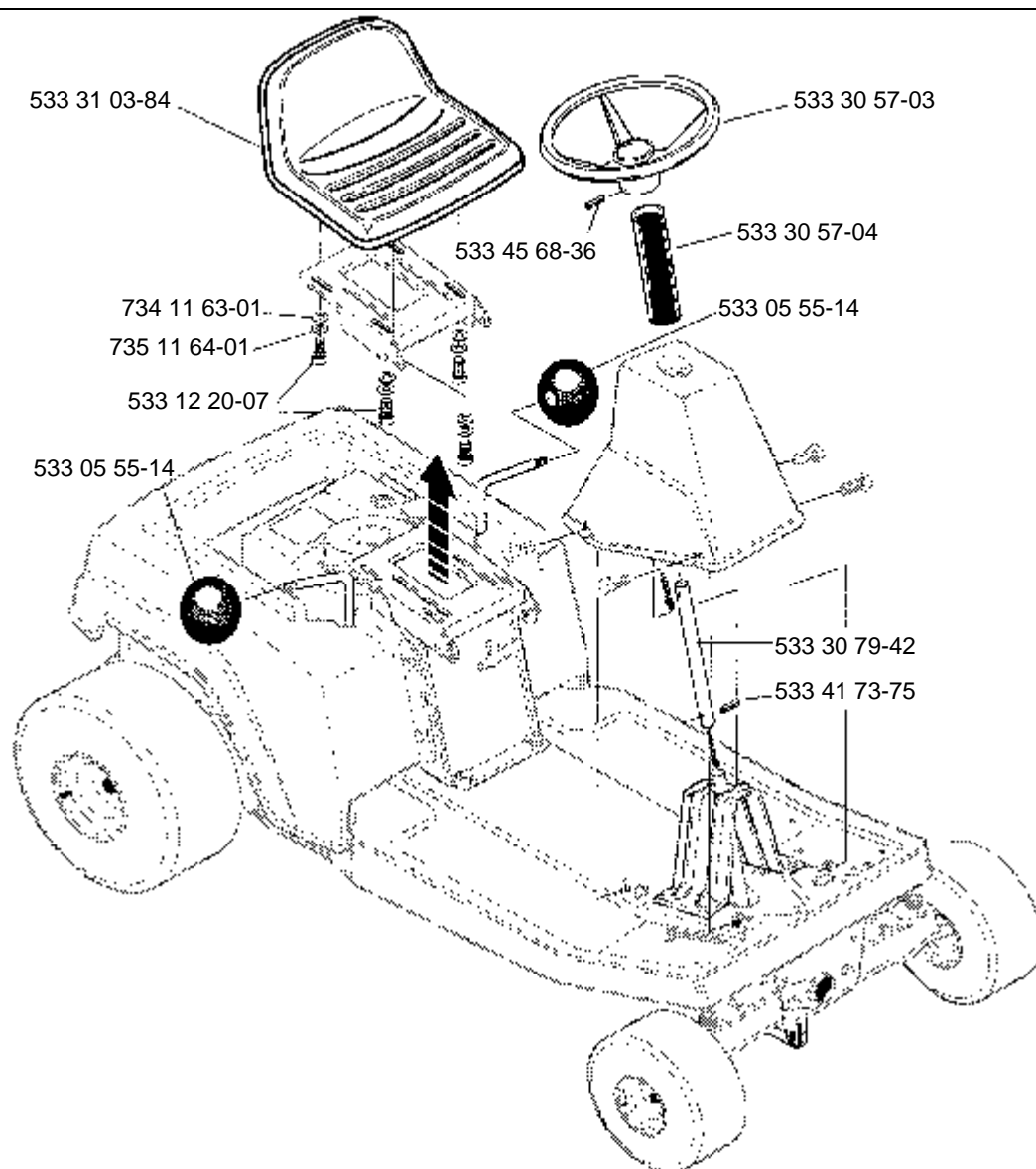
# M



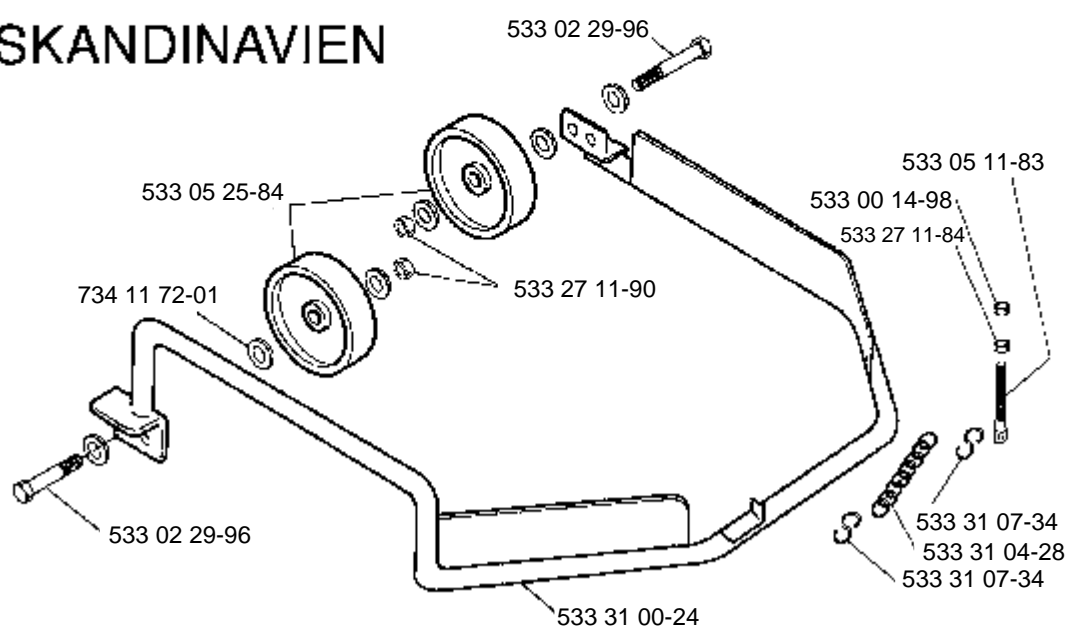


N





## SKANDINAVIEN



533 05 25-84

734 11 72-01

533 02 29-96

533 02 29-96

533 27 11-90

533 31 00-24

533 00 14-98

533 27 11-84

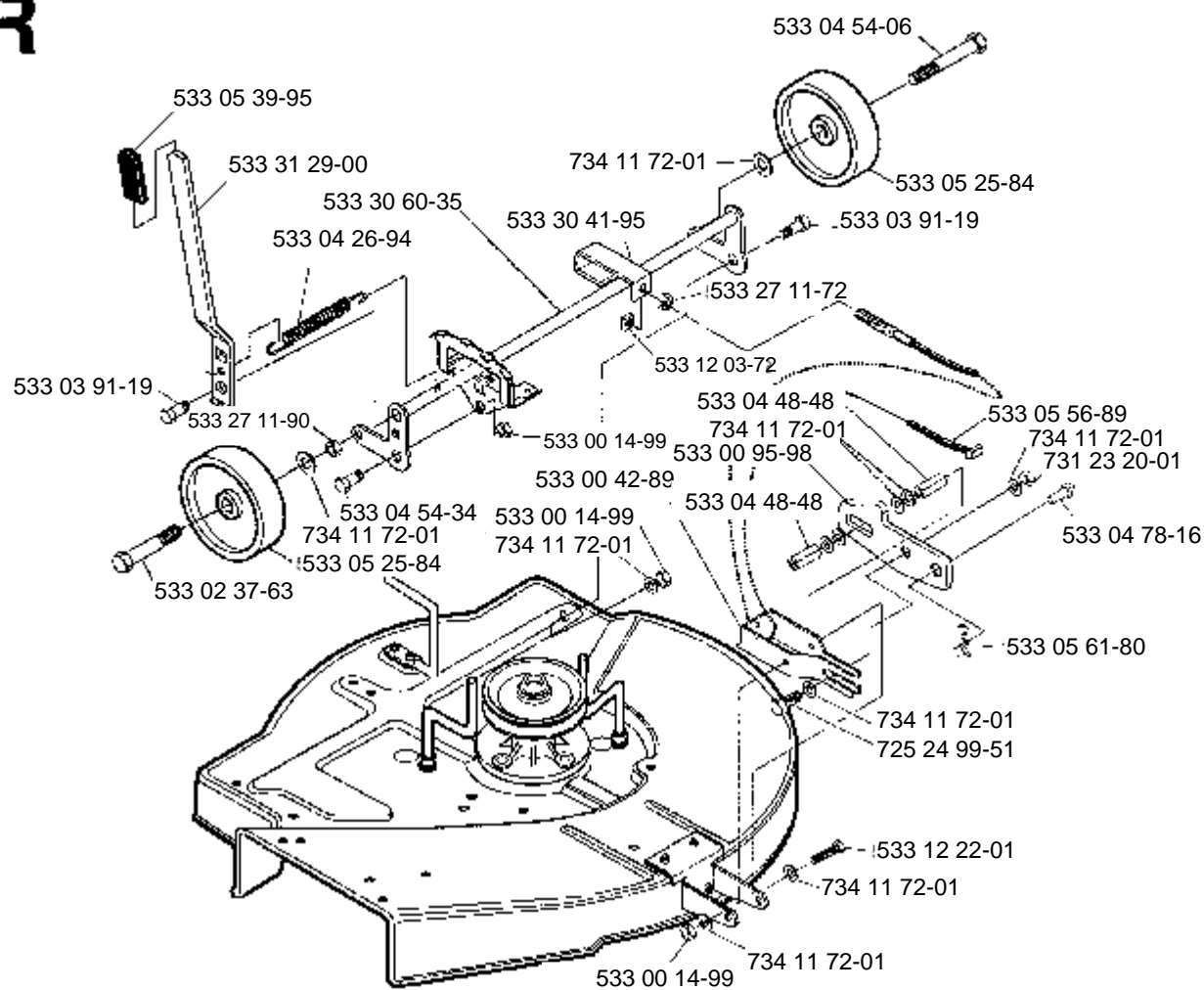
533 05 11-83

533 31 07-34

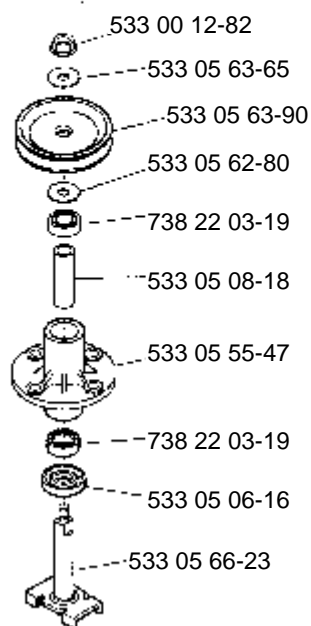
533 31 04-28

533 31 07-34

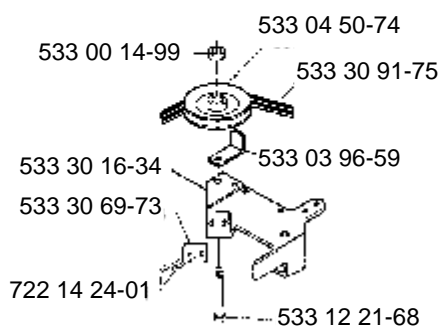
# R



# S



# T



MODEL NUMBER R650

PARTNUMBER	SQUARE	NOTE	PARTNUMBER	SQUARE	NOTE	PARTNUMBER	SQUARE	NOTE	PARTNUMBER	SQUARE	NOTE
506 66 42-01	A		533 04 58-92	E		533 30 11-33	E		533 31 03-09	N	
516 84 46-00	D		533 04 63-76	D		533 30 11-37	C		533 31 03-51	N	
531 02 00-71	C		533 04 78-16	R		533 30 11-75	C		533 31 03-84	B,D	
532 00 81-34	E		533 04 86-72	A		533 30 16-20	N		533 31 03-88	N	
533 00 12-82	S		533 04 98-99	B		533 30 16-34	T		533 31 04-28	P	
533 00 12-88	N		533 05 05-20	B		533 30 27-60	F		533 31 05-56	N	
533 00 14-98	B, E, M, P		533 05 06-07	A		533 30 27-66	C		533 31 05-58	B	
533 00 14-99	CENRT		533 05 06-16	S		533 30 27-68	C		533 31 07-34	P	
533 00 15-02	N		533 05 08-18	S		533 30 27-99	F		533 31 10-07	N	
533 00 24-83	M		533 05 11-83	P		533 30 28-00	F		533 31 11-07	N	
533 00 30-21	E		533 05 25-84	P, R		533 30 29-21	N		533 31 19-80	N	
533 00 32-75	F		533 05 28-40	F		533 30 29-55	F		533 31 27-16	M	
533 00 42-89	R		533 05 37-04	E		533 30 29-56	F		533 31 29-00	R	
533 00 92-90	E		533 05 39-95	R		533 30 31-09	E		533 31 34-98	B	
533 00 94-05	N		533 05 54-76	M		533 30 31-38	E		533 31 35-04	B	
533 00 95-98	R		533 05 54-81	M		533 30 31-40	C		533 31 42-28	F	
533 00 97-96	E		533 05 54-88	A		533 30 31-47	F		533 31 49-87	A	
533 01 25-01	A		533 05 55-14	E, N, O		533 30 31-48	F		533 31 53-62	F	
533 01 25-21	N		533 05 55-47	S		533 30 31-51	E		533 31 60-65	B	
533 01 25-52	F		533 05 56-89	R		533 30 32-49	F		533 31 62-18	F	
533 01 25-53	D		533 05 61-80	N, R		533 30 40-10	C		533 31 91-36	B	
533 01 25-85	E		533 05 62-55	E		533 30 41-76	M		533 41 73-75	O	
533 01 25-91	E		533 05 62-80	S		533 30 41-95	R		533 45 45-65	C	
533 02 05-07	B		533 05 63-65	S		533 30 43-98	N		533 45 54-81	M	
533 02 08-59	C, F		533 05 63-90	S		533 30 50-05	N		533 45 60-36	O	
533 02 20-53	E		533 05 64-31	E		533 30 50-23	C		533 99 53-46	A, E, N	
533 02 29-96	P		533 05 66-23	S		533 30 50-35	E		721 61 81-01	E	
533 02 37-63	R		533 05 66-79	A		533 30 50-36	E		721 68 01-51	E	
533 02 50-06	E		533 05 71-57	E		533 30 51-49	A		722 14 24-01	T	
533 03 52-87	A, D		533 05 72-20	D		533 30 52-25	N		725 23 66-71	O	
533 03 54-10	E, N		533 05 74-76	D		533 30 56-45	B		725 23 68-71	B	
533 03 54-97	F		533 05 82-77	D		533 30 57-03	D		725 24 49-51	BCFMN	
533 03 54-98	B, E		533 05 83-36	N		533 30 57-04	D		725 24 51-71	C, E, N	
533 03 66-25	E		533 12 03-72	N, R		533 30 58-30	E		725 24 53-71	B, N	
533 03 68-32	C		533 12 03-82	C		533 30 58-33	B		725 24 59-51	A, B	
533 03 91-19	R		533 12 06-13	N		533 30 58-36	D		725 24 62-51	B, E	
533 03 92-90	N		533 12 20-07	B, O		533 30 58-37	A		725 24 64-51	N	
533 03 95-22	E, N		533 12 21-45	A, C		533 30 59-22	B		725 24 99-51	R	
533 03 95-73	M		533 12 21-68	T		533 30 59-29	A		725 26 07-51	F	
533 03 96-28	E		533 12 22-01	R		533 30 59-33	B, D		727 64 51-01	C, E	
533 03 96-59	E, T		533 14 27-64	E		533 30 60-35	R		731 23 16-01	B, O	
533 04 03-94	E		533 18 01-12	A		533 30 62-75	A		731 23 18-01	ABCDEFMN	
533 04 06-77	C		533 27 11-72	N, R		533 30 62-76	A		731 23 20-01	B, F, R	
533 04 18-90	E		533 27 11-84	E, N, P		533 30 64-19	D		734 11 46-01	A	
533 04 22-95	C		533 27 11-90	P, R		533 30 69-73	T		734 11 63-01	ABCENNO	
533 04 26-94	R		533 30 01-93	D		533 30 79-42	O		734 11 65-41	E	
533 04 28-15	E		533 30 01-94	D		533 30 90-53	E		734 11 72-01	AEMNPR	
533 04 39-26	M		533 30 04-73	N		533 30 91-75	M, T		734 11 78-01	E	
533 04 41-12	F		533 30 05-75	E		533 30 92-35	B		734 11 86-01	C, E, F	
533 04 45-82	F		533 30 05-87	E		533 30 92-51	E		735 11 64-01	B, O	
533 04 48-48	R		533 30 05-88	E		533 30 92-55	E		735 21 64-00	N	
533 04 50-74	E, T		533 30 05-89	E		533 30 95-12	B		735 21 73-01	E	
533 04 54-06	R		533 30 06-98	N		533 30 95-13	B		738 22 03-19	S	
533 04 54-34	R		533 30 07-51	M		533 31 00-24	P				
533 04 55-42	M		533 30 11-24	E		533 31 02-02	E				