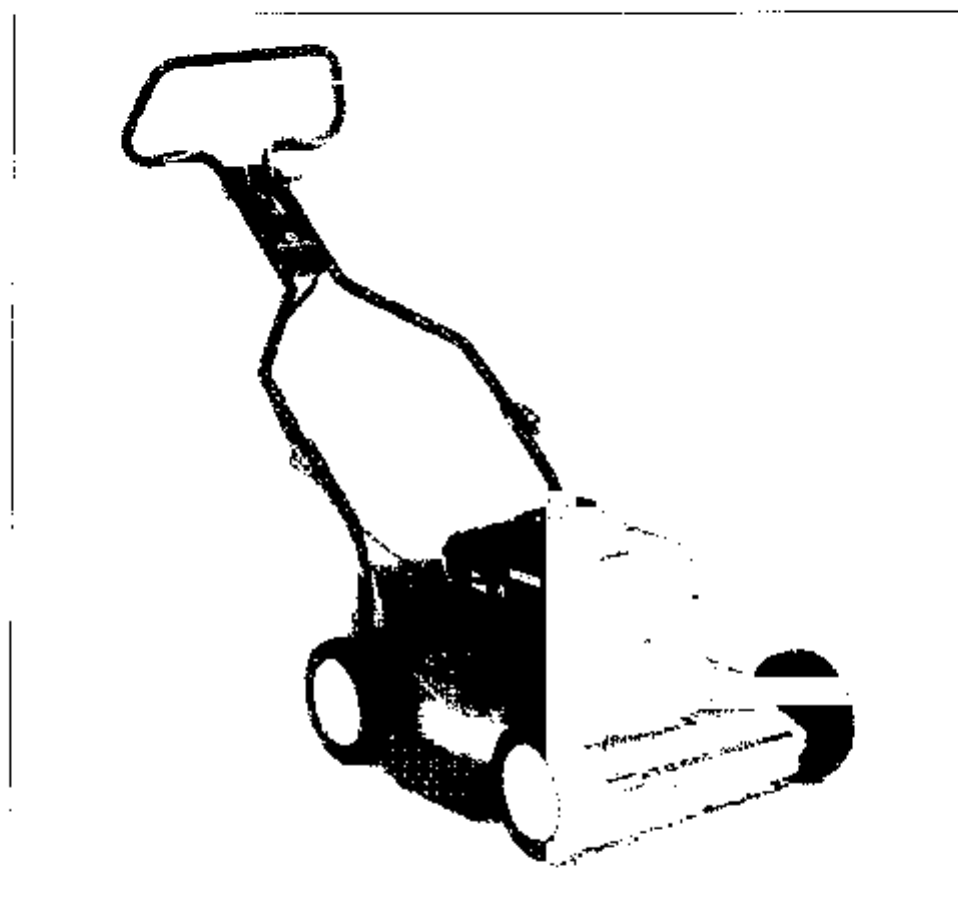




Team 48S



1.1992

Spare parts

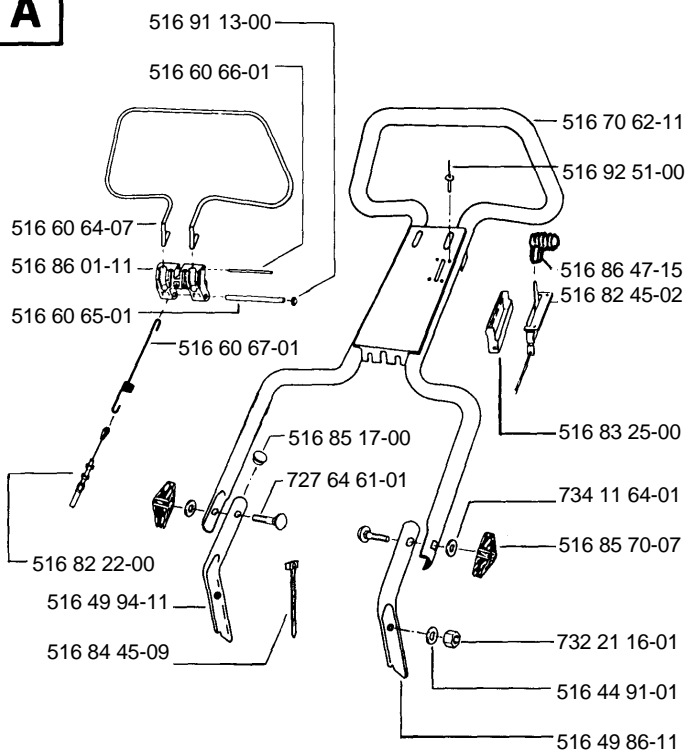
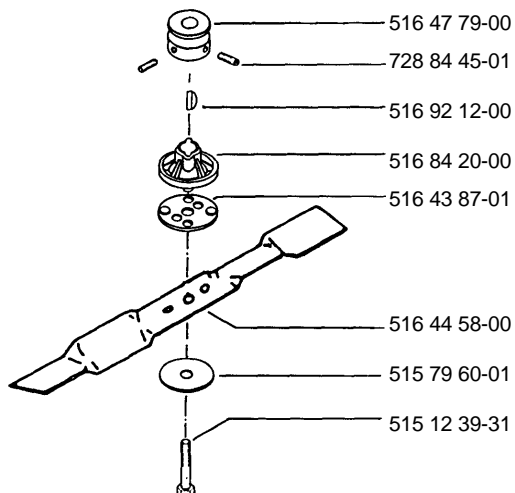
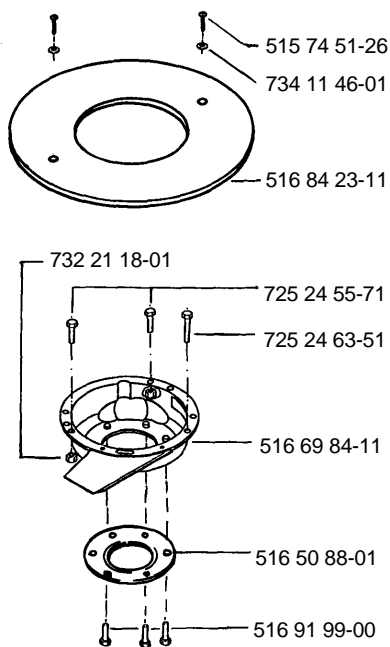
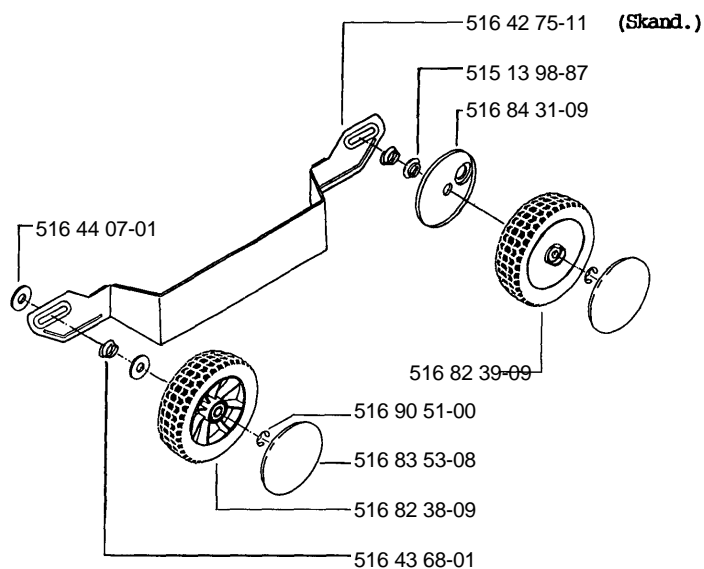
Ersatzteile

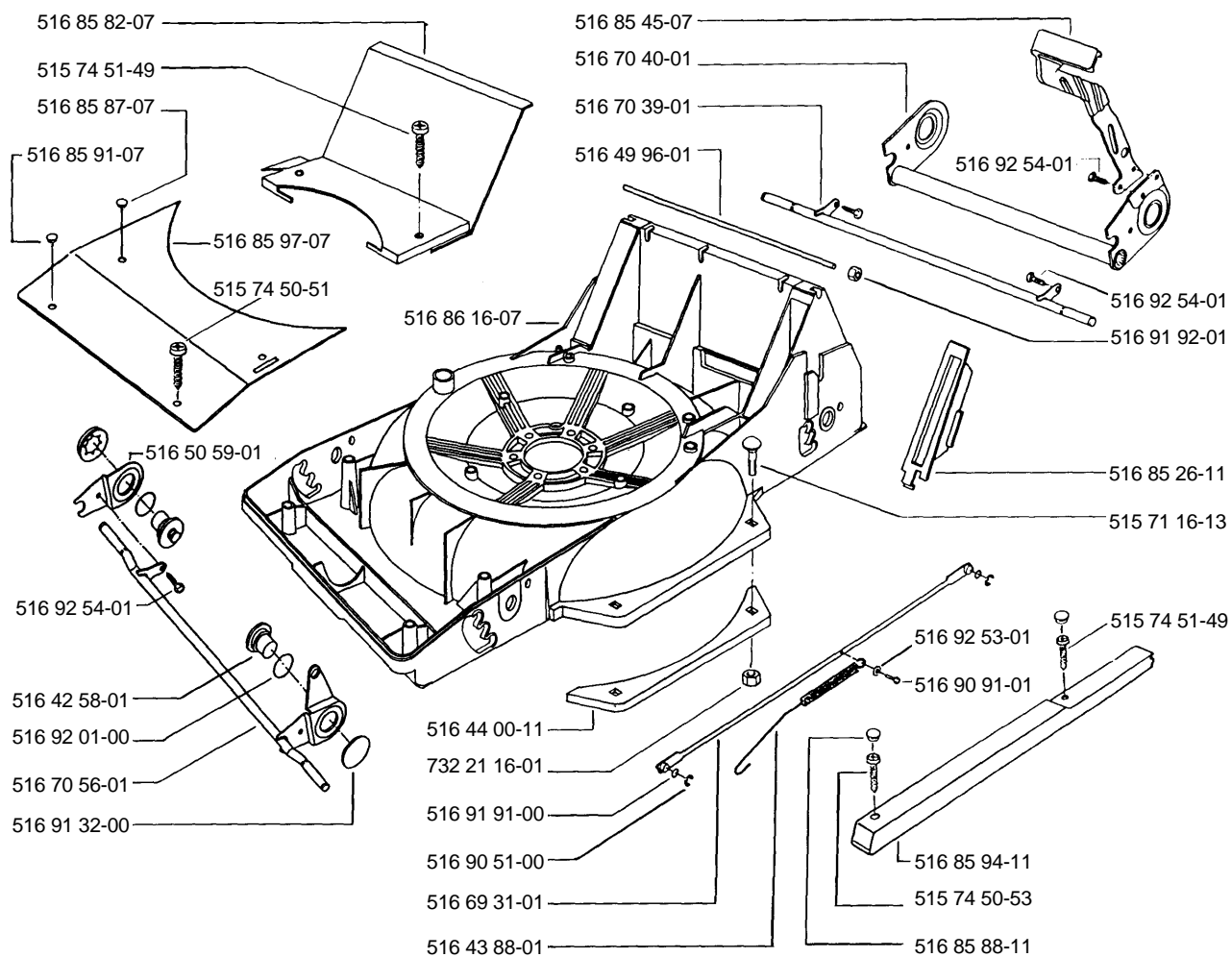
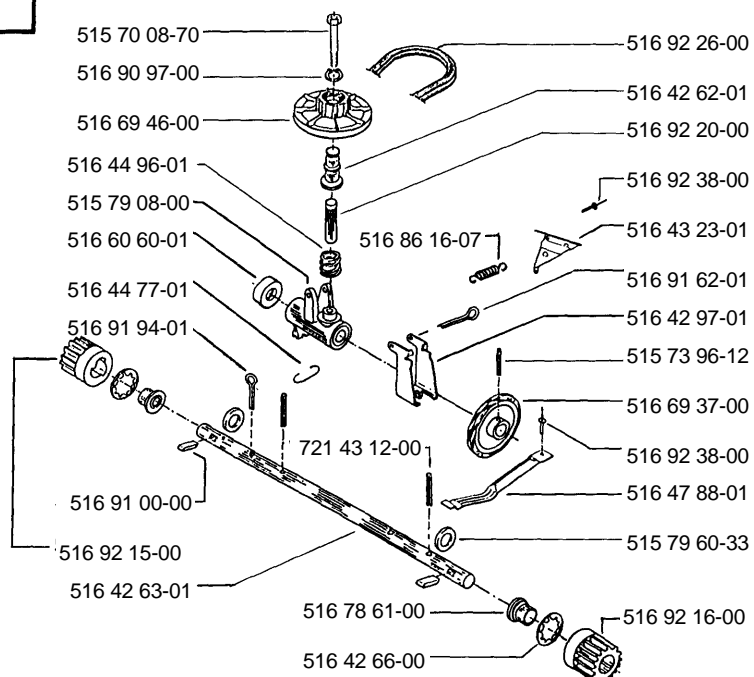
Pièces détachées

Reserve onderdelen

Repuestos

Reservdelar

A**C****D****E**

B**Motor Briggs & Stratton 123802 04 06-01****F**

Ref.No. Teil-Nr N° de réf. Ref.No. N° ref. Ref. nr.	Square Viereck Carreau Vak Cuadro Ruta	Ref.No. Teil-Nr N° de réf. Ref.No. N° ref. Ref. nr.	Square Viereck Carreau Vak Cuadro Ruta
515 12 39-31	C	516 85 17-00	A
515 13 98-87	E	516 85 26-11	B
515 70 08-70	F	516 85 45-07	B
515 71 16-13	B	516 85 70-07	A
515 73 96-12	F	516 85 82-07	B
515 74 50-51	B	516 85 87-07	B
515 74 50-53	B	516 85 88-11	B
515 74 51-26	D	516 85 91-07	B
515 74 51-49	B	516 85 94-11	B
515 79 60-33	F	516 85 97-07	B
515 79 60-01	C	516 86 01-11	A
516 42 58-01	B	516 86 16-07	B
516 42 62-01	F	516 86 47-15	A
516 42 63-01	F	516 90 51-00	B,E
516 42 66-00	F	516 90 91-01	B
516 42 75-11	E	516 90 97-00	F
516 42 97-01	F	516 91 00-00	F
516 43 23-01	F	516 91 13-00	A
516 43 68-01	E	516 91 32-00	B
516 43 87-01	C	516 91 62-01	F
516 43 88-01	B	516 91 91-00	B
516 44 00-11	B	516 91 92-01	B
516 44 07-01	E	516 91 94-01	F
516 44 58-00	C	516 91 99-00	D
516 44 77-01	F	516 92 01-00	B
516 44 91-01	D	516 92 12-00	C
516 44 96-01	F	516 92 15-00	F
516 44 98-01	F	516 92 16-00	F
516 47 79-00	C	516 92 20-00	F
516 47 88-01	F	516 92 38-00	F
516 49 86-11	A	516 92 26-00	F
516 49 94-11	A	516 92 51-00	A
516 49 96-01	B	516 92 53-01	B
516 50 59-01	B	516 92 54-01	B
516 50 88-01	D	721 43 12-00	F
516 60 60-01	F	725 24 55-71	D
516 60 64-07	A	725 24 63-51	D
516 60 65-01	A	727 64 61-01	A
516 60 66-01	A	728 84 45-01	C
516 60 67-01	A	732 21 16-01	A,B
516 69 31-01	B	732 21 18-01	D
516 69 37-00	F	734 11 64-01	A
516 69 46-00	F	734 11 46-01	D
516 69 84-11	D		
516 70 39-01	B		
516 70 40-01	B		
516 70 56-01	B		
516 70 62-11	A		
516 78 61-00	F		
516 79 08-00	F		
516 82 22-00	A		
516 82 38-09	E		
516 82 39-09	E		
516 82 45-02	A		
516 83 25-00	A		
516 83 53-08	E		
516 84 20-00	C		
516 84 23-11	D		
516 84 31-09	E		
516 84 45-09	A		