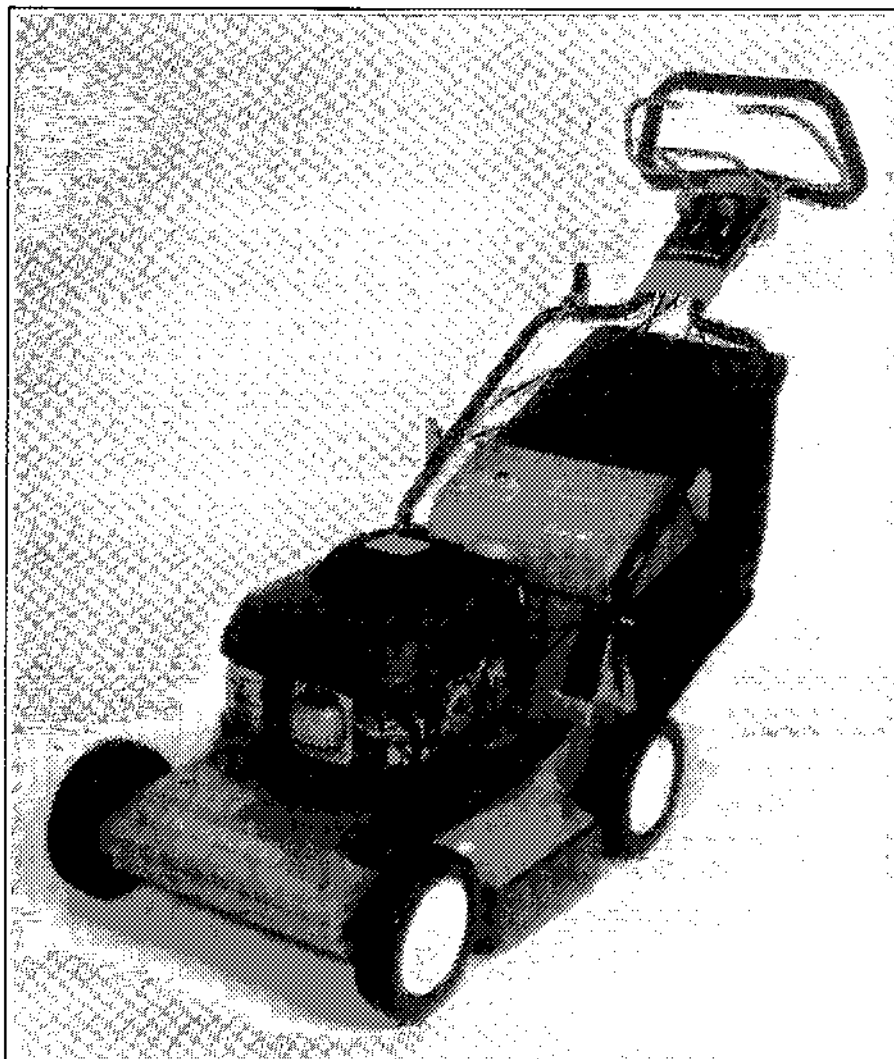


5

SX 89 043

Royal 19/S/SE



1. 1989

Spare parts

Ersatzteile

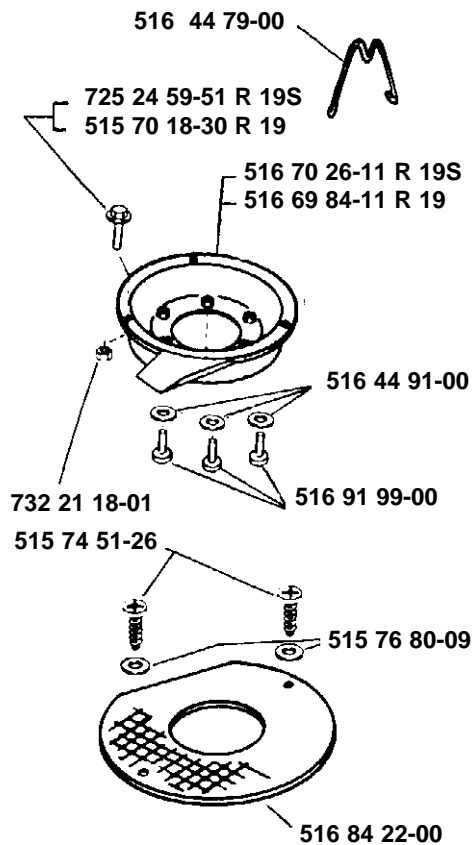
Pièces détachées

Reserve onderdelen

Repuestos

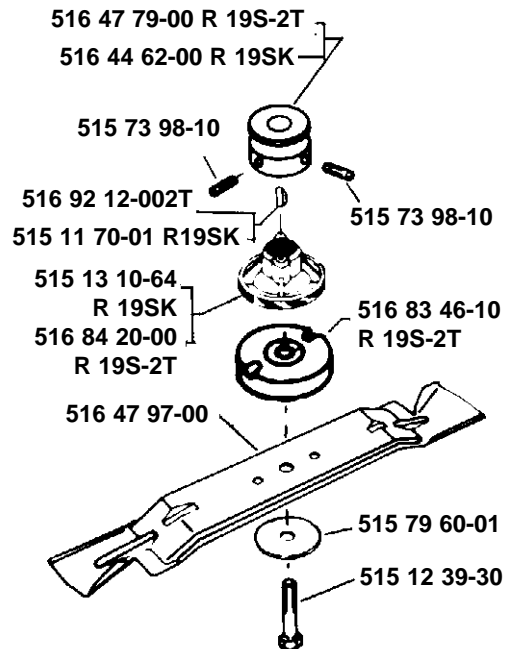
Reservdelar

A

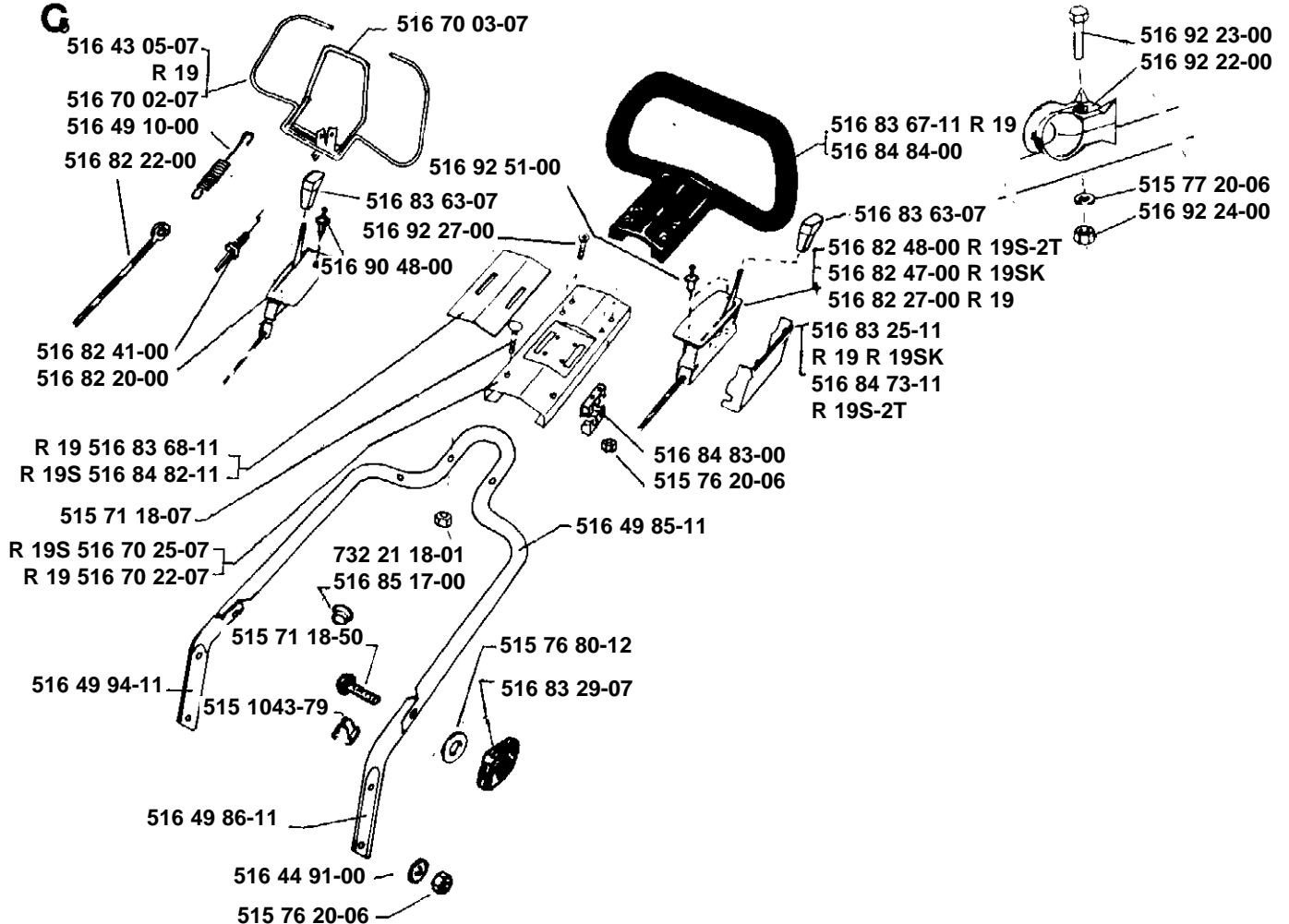


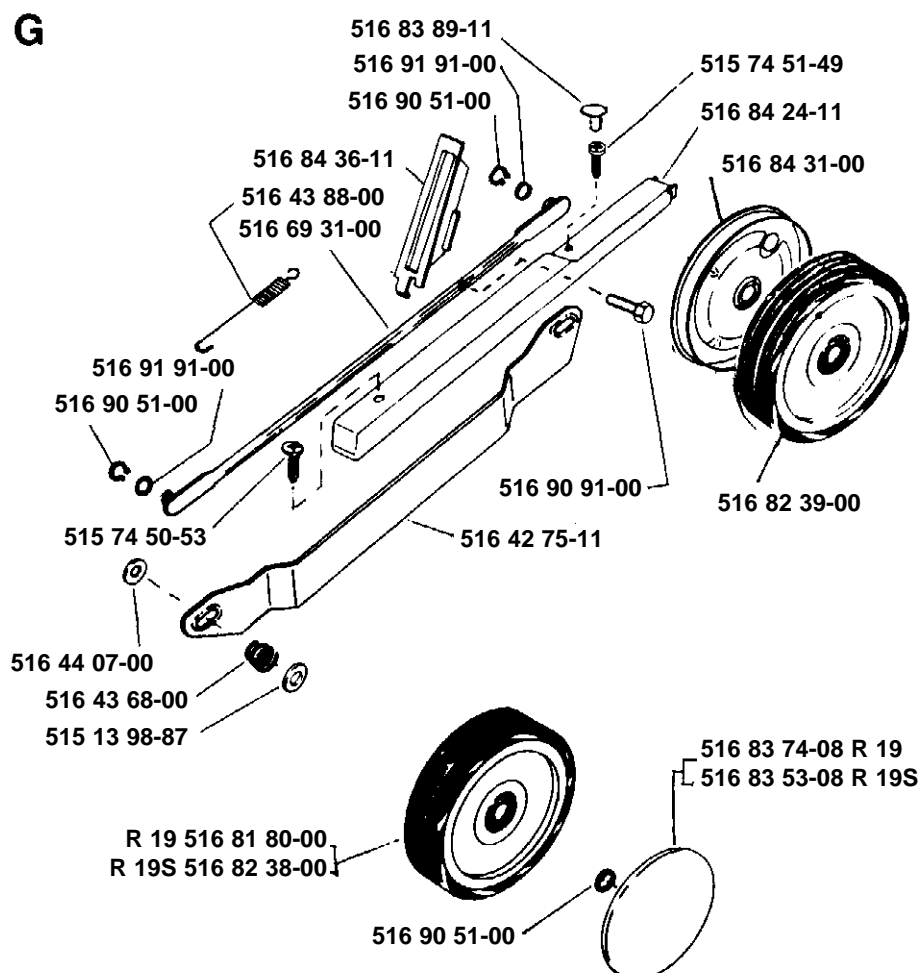
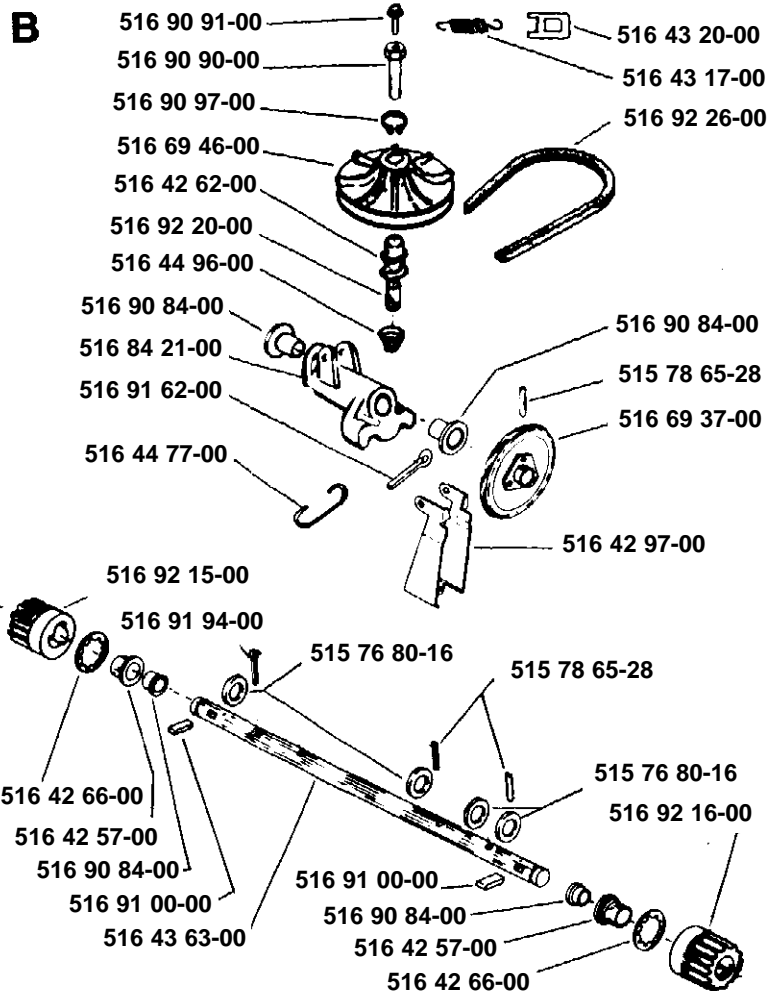
E

R 19 SK - Kawasaki R 19 S-2T - two stroke



G



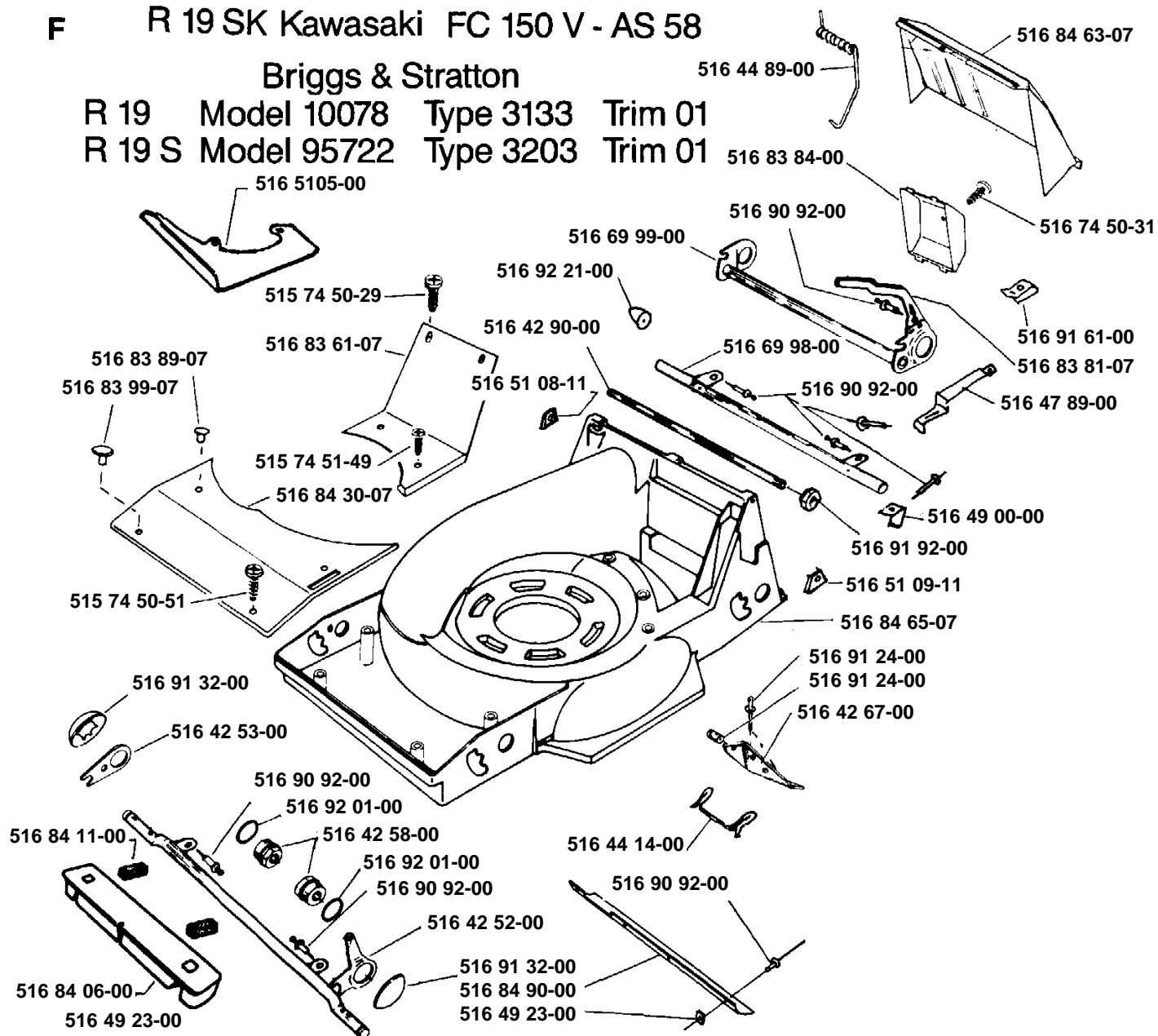


F R 19 SK Kawasaki FC 150 V - AS 58

Briggs & Stratton

R 19 Model 10078 Type 3133 Trim 01

R 19 S Model 95722 Type 3203 Trim 01



| Ref.No. Teil-Nr N° de réf. Ref.No. N° ref. Ref. nr. | Square Viereck Carreau Vak Cuadro Ruta | Ref.No. Teil-Nr N° de réf. Ref.No. N° ref. Ref. nr. | Square Viereck Carreau Vak Cuadro Ruta | Ref.No. Teil-Nr N° de réf. Ref.No. N° ref. Ref. nr. | Square Viereck Carreau Vak Cuadro Ruta |
|--|---|--|---|--|---|
| 515 78 91-00 | G | 516 51 21-01 | C | 516 90 84-00 | B |
| 515 10 43-79 | C | 516 69 31-00 | G | 516 90 90-00 | B |
| 515 11 70-01 | E | 516 69 37-00 | B | 516 90 91-00 | B |
| 515 12 39-30 | E | 516 69 46-00 | B | 516 90 92-00 | F |
| 515 13 10-64 | E | 516 69 84-11 | A | 516 90 97-00 | B |
| 515 13 98-87 | G | 516 69 96-00 | D | 516 91 00-00 | B |
| 515 70 08-60 | A | 516 69 97-00 | F | 516 91 24-00 | F |
| 515 70 18-30 | A | 516 69 98-00 | F | 516 91 32-00 | F |
| 515 71 18-07 | C | 516 69 99-00 | F | 516 91 61-00 | F |
| 515 71 18-50 | C | 516 70 02-07 | C | 516 91 62-00 | B |
| 515 72 46-35 | C | 516 70 03-07 | C | 516 91 91-00 | G |
| 515 73 98-10 | E | 516 70 22-07 | C | 516 91 92-00 | F |
| 515 74 50-29 | F | 516 70 25-07 | C | 516 91 93-00 | F |
| 515 74 50-31 | F | 516 70 26-11 | A | 516 91 94-00 | B |
| 515 74 50-51 | F | 516 81 80-00 | G | 516 91 99-00 | A |
| 515 74 50-53 | C | 516 82 11-00 | G | 516 92 01-00 | F |
| 515 74 51-26 | A | 516 82 12-00 | G | 516 92 06-00 | F |
| 515 74 51-49 | C | 516 82 20-00 | C | 516 92 12-00 | E |
| 515 76 20-06 | C | 516 82 22-00 | C | 516 92 15-00 | B |
| 515 76 80-09 | A | 516 82 27-00 | C | 516 92 16-00 | B |
| 515 76 80-12 | C | 516 82 38-00 | G | 516 92 20-00 | B |
| 515 76 80-16 | B | 516 82 39-00 | G | 516 92 21-00 | F |
| 515 77 20-06 | C | 516 82 41-00 | C | 516 92 22-00 | C |
| 515 78 65-28 | B | 516 82 47-00 | C | 516 92 23-00 | C |
| 515 79 60-01 | E | 516 82 48-00 | C | 516 92 24-00 | C |
| 516 42 52-00 | F | 516 82 51-00 | C | 516 92 26-00 | B |
| 516 42 53-00 | F | 516 82 58-00 | C | 516 92 27-00 | C |
| 516 42 57-00 | B | 516 83 25-11 | C | 516 92 38-00 | F |
| 516 42 58-00 | F | 516 83 29-07 | C | 516 92 40-00 | C |
| 516 42 62-00 | B | 516 83 46-00 | A | 516 92 51-00 | C |
| 516 42 63-00 | B | 516 83 53-08 | G | 518 38 90-71 | G |
| 516 42 66-00 | B | 516 83 61-07 | F | 725 24 55-71 | A |
| 516 42 67-00 | F | 516 83 63-07 | C | 725 24 59-51 | A |
| 516 42 75-11 | G | 516 83 67-11 | C | 732 21 18-01 | A |
| 516 42 77-00 | B | 516 83 68-11 | C | | |
| 516 42 90-00 | F | 516 83 71-11 | C | | |
| 516 42 97-00 | B | 516 83 74-08 | G | | |
| 516 43 05-07 | C | 516 83 75-07 | F | | |
| 516 43 17-00 | B | 516 83 81-07 | F | | |
| 516 43 20-00 | B | 516 83 84-00 | F | | |
| 516 43 21-00 | C | 516 83 86-07 | F | | |
| 516 43 68-00 | G | 516 83 89-07 | F | | |
| 516 43 88-00 | G | 516 83 89-11 | G | | |
| 516 44 07-00 | G | 516 83 94-07 | F | | |
| 516 44 14-00 | F | 516 83 96-11 | C | | |
| 516 44 62-00 | E | 516 83 99-07 | F | | |
| 516 44 77-00 | B | 516 84 06-00 | F | | |
| 516 44 79-00 | A | 516 84 11-00 | F | | |
| 516 44 89-00 | F | 516 84 20-00 | E | | |
| 516 44 91-00 | A,C | 516 84 21-00 | B | | |
| 516 44 96-00 | B | 516 84 21-00 | A | | |
| 516 44 99-11 | C | 516 84 24-11 | G | | |
| 516 47 79-00 | E | 516 84 25-11 | G | | |
| 516 47 87-00 | F | 516 84 30-07 | F | | |
| 516 47 89-00 | F | 516 84 31-00 | G | | |
| 516 47 90-00 | A | 516 84 36-11 | G | | |
| 516 47 97-00 | E | 516 84 45-09 | C | | |
| 516 47 99-00 | F | 516 84 63-07 | F | | |
| 516 49 00-00 | F | 516 84 65-07 | F | | |
| 516 49 05-00 | C | 516 84 73-11 | C | | |
| 516 49 10-00 | C | 516 84 82-11 | C | | |
| 516 49 23-00 | F | 516 84 83-00 | C | | |
| 516 49 44-00 | F | 516 84 84-00 | C | | |
| 516 49 85-11 | C | 516 84 85-11 | D | | |
| 516 49 86-11 | C | 516 84 90-00 | F | | |
| 516 49 94-11 | C | 516 85 11-00 | D | | |
| 516 49 96-00 | F | 516 85 17-00 | C | | |
| 516 51 05-00 | F | 516 85 25-07 | F | | |
| 516 51 08-11 | F | 516 85 26-11 | G | | |
| 516 51 09-11 | F | 516 90 51-00 | G | | |